

SANDEEP RAJENDRAN

Architecture portfolio



TAURUS-ASSET IDENTITY

@ Trivandrum Technopark

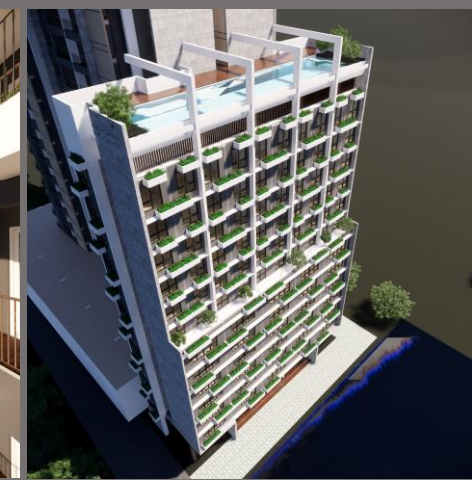
Residential Tower, a part of Taurus Downtown Trivandrum, a mixed use office, retail, residential and hotel development located at the heart of Technopark in Trivandrum.

2 Basements + G + 26 floors, 90 m tall Residential Tower

300 apartment units ranging in area from 100 sft to 2700 sft

Co-living & Co- working concept, with living units catering to single user, couple, small & large family

Built-up Area = 4,12,000 sft



TAURUS-ASSET IDENTITY

@ Trivandrum Technopark

Residential Tower, part of Taurus Downtown Trivandrum, a mixed use office, retail, residential and hotel development located at the heart of Technopark in Trivandrum.

2 Basements + G + 26 floors, 90 m tall Residential Tower

300 apartment units ranging in area from 100 sft to 2700 sft

Co-living & Co- working concept, with living units catering to single user, couple, small & large family

Built-up Area = 4,12,000 sft



ASSET PLAY

@ Kizhakambalam, Kerala

Residential complex of 860 apartments comprising of 6 towers.

7 acres of land area

1 Basement + 5 floors of parking podium + 10 to 20 floors of apartments,

6 towers of height varying from 10 to 20 floors, creating a cascading appearance.

Very large club house with priority given to various sports amenities.

Built-up Area = 13,70,000 sft



ASSET PLAY

@ Kizhakambalam, Kerala

Residential complex of 860 apartments comprising of 6 towers.

7 acres of land area

1 Basement + 5 floors of parking podium + 10 to 20 floors of apartments,

6 towers of height varying from 10 to 20 floors, creating a cascading appearance.

Very large club house with priority given to various sports amenities.

Built-up Area = 13,70,000 sft

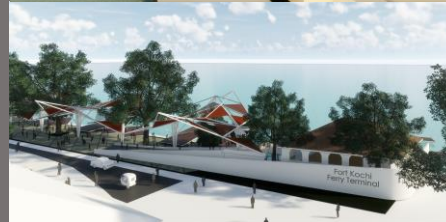
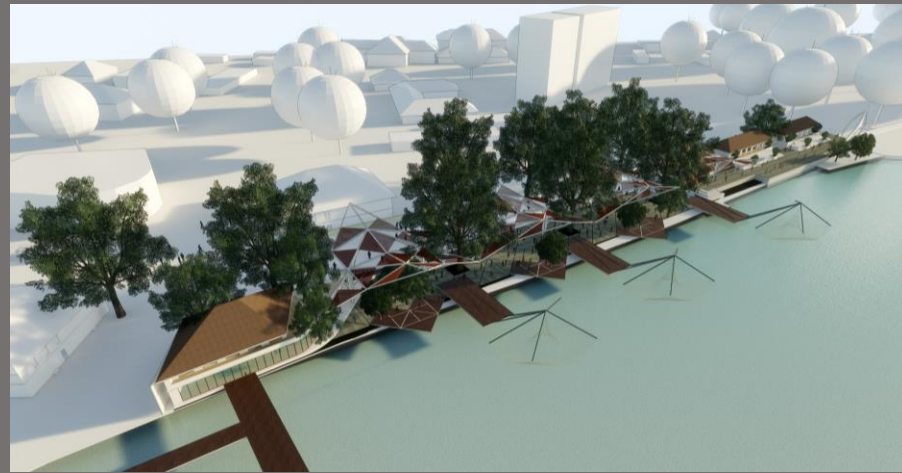


FERRY TERMINAL

@ Fort Kochi, Cochin

Design Competition Entry for a proposed Ferry Terminal at Fort Cochin, Kerala.

Making use of existing Heritage buildings at either ends of the site & connecting them through a linear stretch of connected pavilion structure to form the main concourse for the terminal.



FERRY TERMINAL

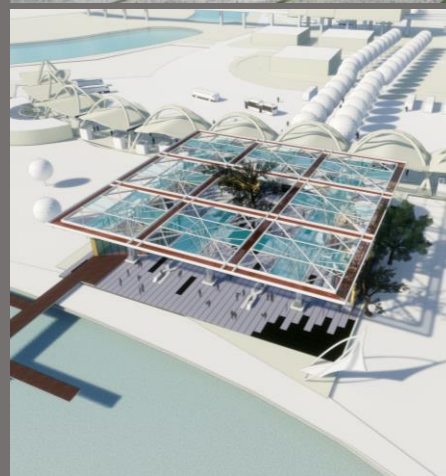
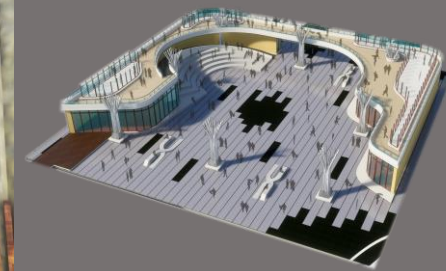
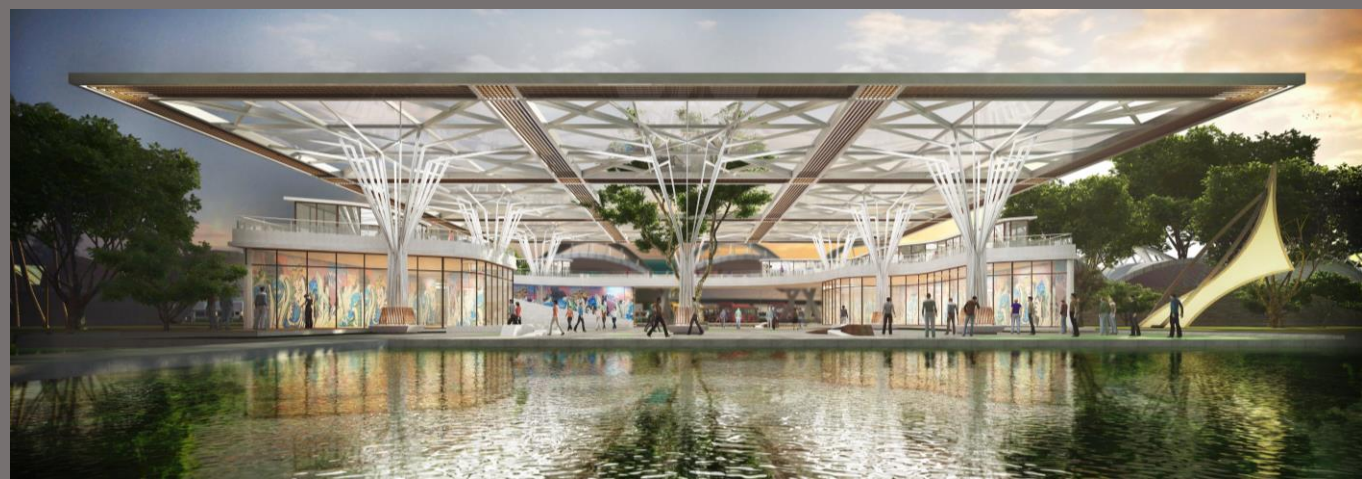
@ Vytilla, Cochin

Design Competition Entry for a proposed Ferry Terminal at Vytilla, Kerala.

Shortlisted among top 5 entries

Designed as a large open plaza, enveloped by terminal building on all 3 sides creating an open vista towards the back waters.

A vast super roof, "umbrella" like canopy, that spans across the entire site.



ABAD SIGNATURE

@ Cochin

Premium Residential Tower, including 32 luxury apartments

G + 17 floors, 60 m tall Residential Tower

2 apartments per floor

Each apartment gets a double height landscape court

Built-up Area = 1,20,000 sft



BRIGADE EXOTICA

@ Old Madras Road, Bangalore

Premium Residential Apartment complex, including two high rise towers housing 237 Apartments each, a G+2 Clubhouse, and a G + 2 Retail block

Site area of 10.5 acres

G + 35 floors, 119 m tall Residential Towers

7 apartments per floor

Each apartment gets a large patio space that forms the "heart" of the unit

Built-up Area = 14,00,000 sft



Designed @ CnT architects, Bangalore

360 MARINA

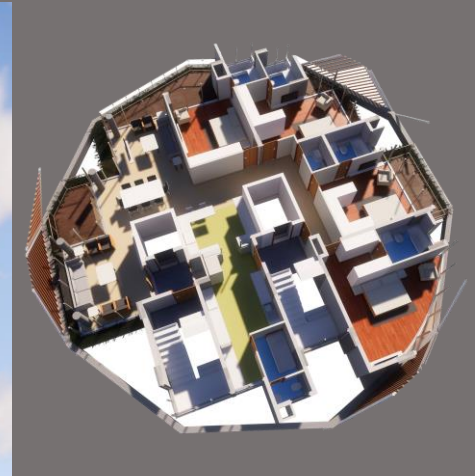
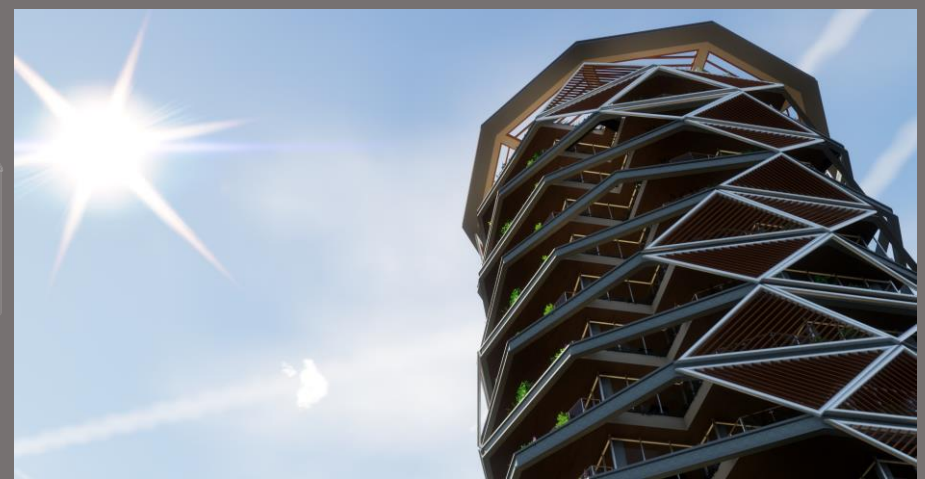
@ Edakochi waterfront, Cochin

17 Ultra luxury Condominiums in a single tower facing the Edakochi back waters.

G + 18 floors, 60 m tall Residential Tower

1 apartment per floor getting 360° views all round

Built-up Area = 70,000 sft



ASSET VENETIAN VISTAS

@ Alleppey, Kerala

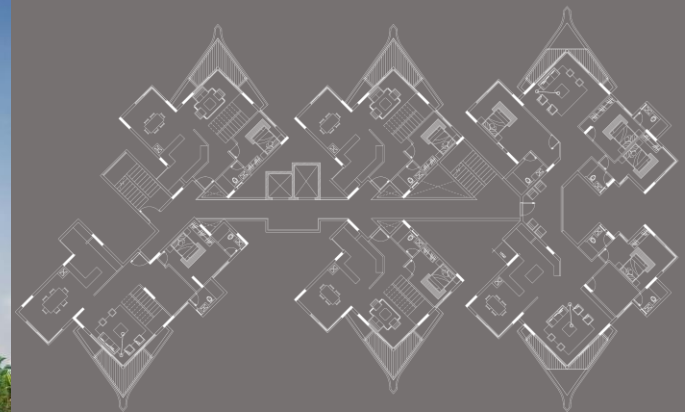
Water Front Residential tower including 74 apartments

G + 16 floors

6 apartments to a floor, with views to the beautiful backwaters of Alleppey

Design inspired from the house boats of Alleppey

Built-up Area = 1,50,000 sft



IIM TRICHY

@ Tiruchirapally, Tamil Nadu

Winning entry, International design competition for Indian Institute of Management, Trichy.

Campus designed as A COMMUNITY OF LEARNERS :

- The central landscape spine.
- The two parallel spines - the "Academic Spine" and the "Residential Spine" with the cross weave of connections back to the central landscape spine.
- The "Face" of the campus in the ceremonial plaza flanked by externally focused signature buildings of Auditorium and Administration.
- The "Heart" of the campus in the Library, Park and Food Court which forms the social centre of the campus.
- The landscape becomes the binding element aligning the central spine with the weave of water bodies for rain water harvesting and recharge.

Designed @ CnT architects, Bangalore



IIM TRICHY

@ Tiruchirapally, Tamil Nadu

Winning entry, International design competition for Indian Institute of Management, Trichy.

Campus designed as A COMMUNITY OF LEARNERS :

- The central landscape spine.
- The two parallel spines - the "Academic Spine" and the "Residential Spine" with the cross weave of connections back to the central landscape spine.
- The "Face" of the campus in the ceremonial plaza flanked by externally focused signature buildings of Auditorium and Administration.
- The "Heart" of the campus in the Library, Park and Food Court which forms the social centre of the campus.
- The landscape becomes the binding element aligning the central spine with the weave of water bodies for rain water harvesting and recharge.

Designed @ CnT architects, Bangalore



IIM TRICHY

@ Tiruchirapally, Tamil Nadu

Winning entry, International design competition for Indian Institute of Management, Trichy.

Campus designed as A COMMUNITY OF LEARNERS :

- The central landscape spine.
- The two parallel spines - the "Academic Spine" and the "Residential Spine" with the cross weave of connections back to the central landscape spine.
- The "Face" of the campus in the ceremonial plaza flanked by externally focused signature buildings of Auditorium and Administration.
- The "Heart" of the campus in the Library, Park and Food Court which forms the social centre of the campus.
- The landscape becomes the binding element aligning the central spine with the weave of water bodies for rain water harvesting and recharge.



Asset Head office @ Cochin



Asset SUT @ Trivandrum



Skyline Synergy @ Cochin



Asset Senate @ Kannur



Asset East Brooke @ Cochin



Skyline Zenith @ Thrissur



Skyline Cambridge @ Trivandrum



Skyline Campus Heights @ Trivandrum



Asset East Brooke @ Cochin



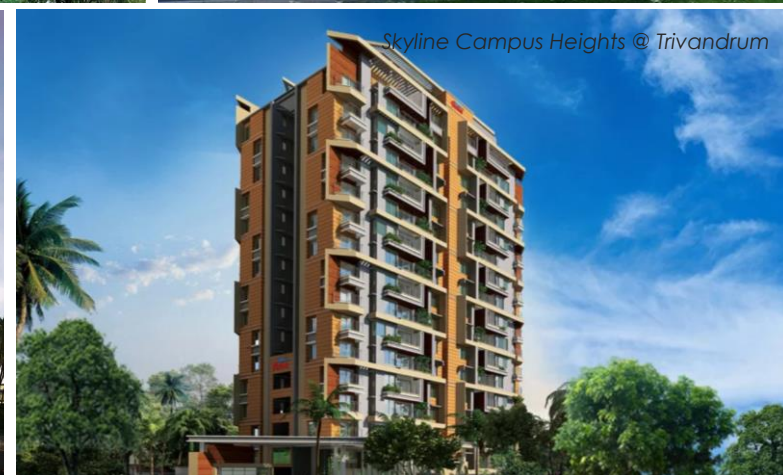
Asset Moon Grace @ Cochin

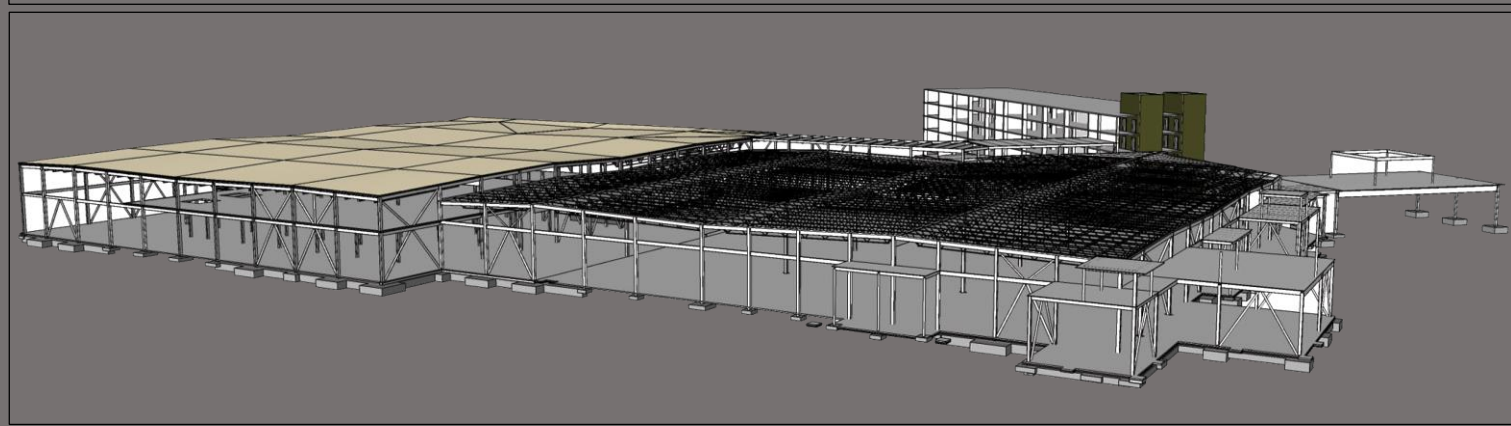
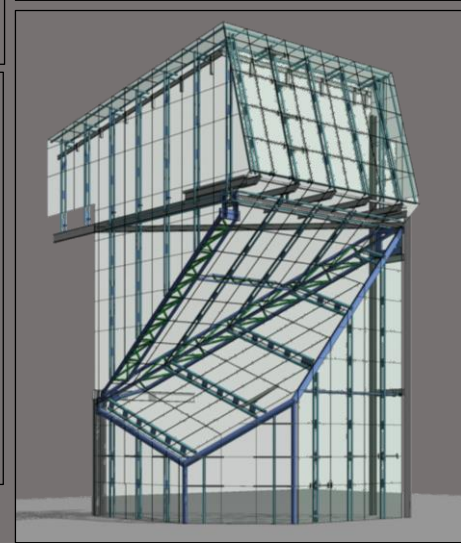
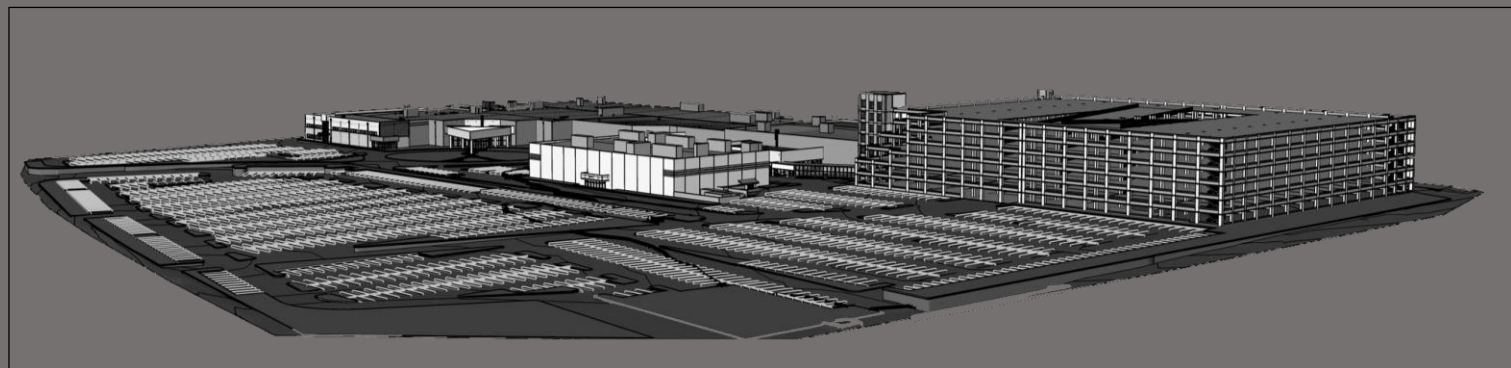
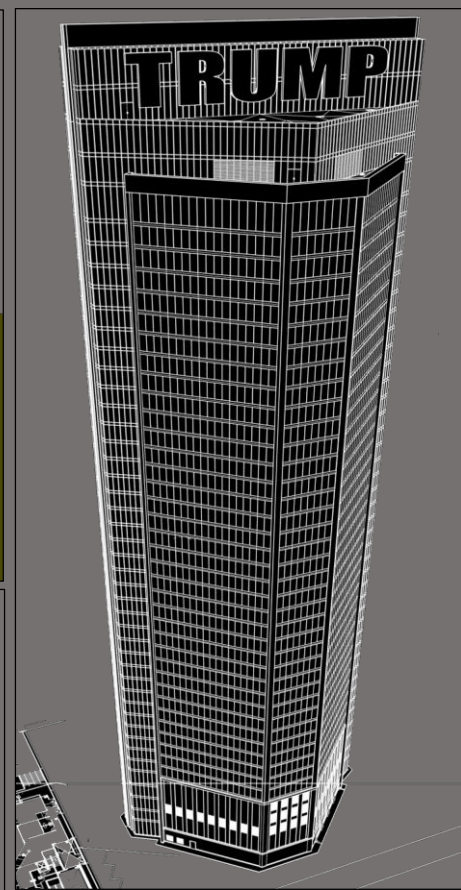
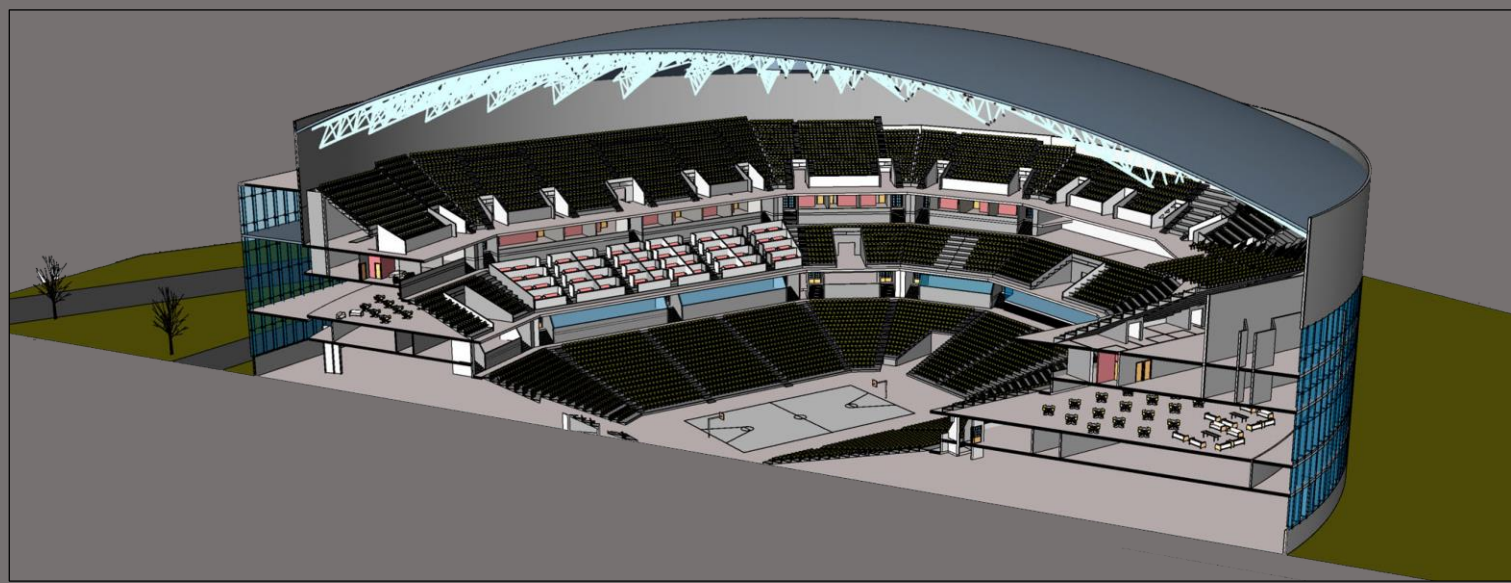


Asset Senate @ Kannur



Skyline Campus Heights @ Trivandrum





THANKYOU

SANDEEP RAJENDRAN
9945355169
sandeeparchitect@gmail.com