

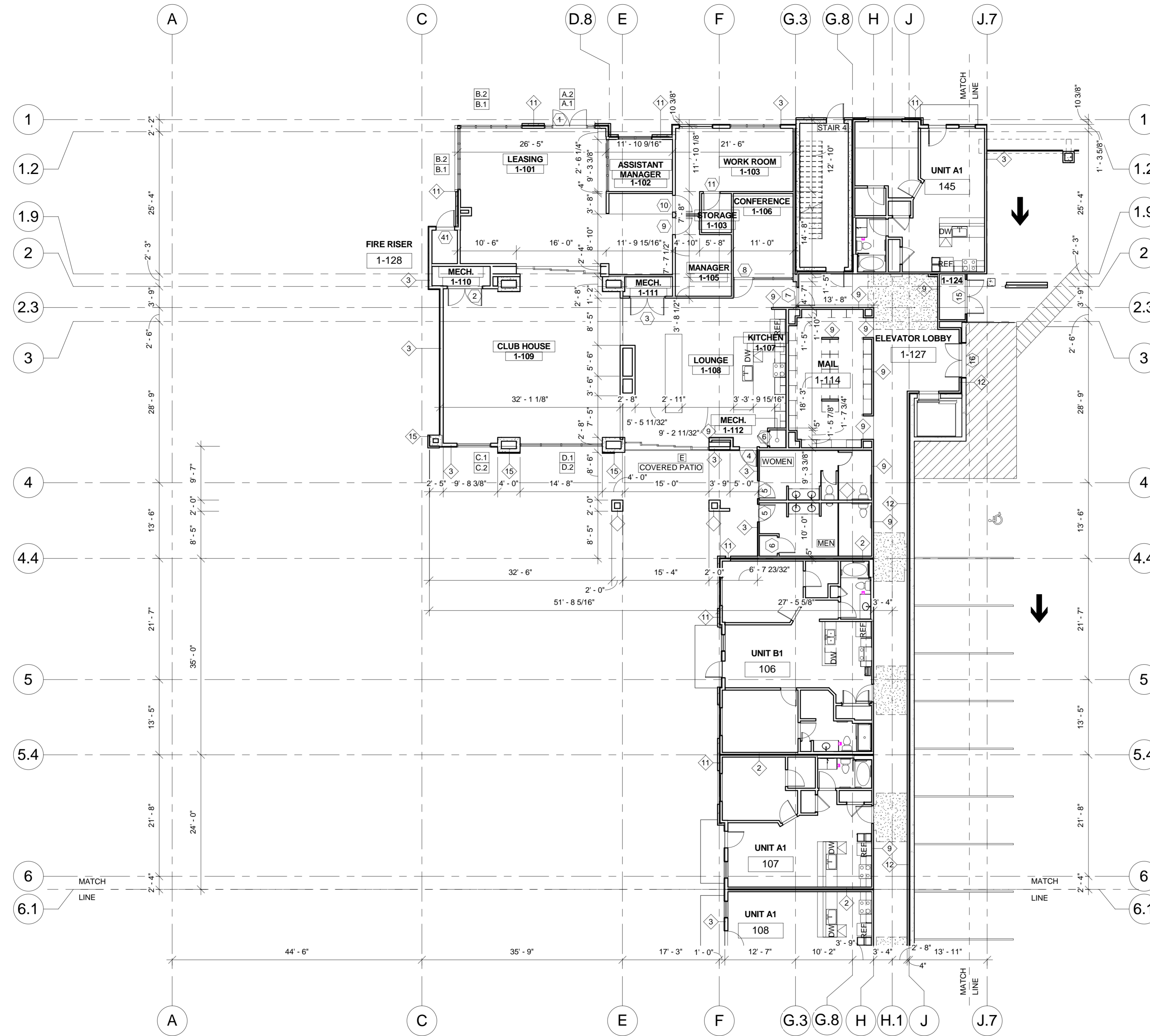
REVIT ARCHITECTURE DRAWING SHEETS



SHEET INDEX		
Sheet Number	Sheet Name	Discipline
A102	OVERALL FIRST FLOOR PLAN	Architecture
A100	COVER SHEETS	Architecture
AA	11	DETAIL
A103	BUILDING 1 FIRST FLOOR SEGMENT A-1	Architecture
A105	BUILDING 1 FIRST FLOOR SEGMENT C-1	Architecture
A106	BUILDING 1 FIRST FLOOR SEGMENT D-1	Architecture
A104	BUILDING 1 FIRST FLOOR SEGMENT B-1	Architecture
A114	EXTERIOR ELEVATION	Architecture
A108	SECTION 2	Architecture
A116	UNIT PLAN ST & ST LOFT	DETAIL
A107	SECTION 1	Architecture
A109	SECTION 3	Architecture
A110	SECTION 4	Architecture
A112	EXTERIOR ELEVATION	Architecture
A113	EXTERIOR ELEVATION	Architecture
A111	SECTION 5	Architecture
A101	SITE PLAN	Architecture
A117	UNIT PLAN B1 & B2	DETAIL
A118	BUILDING 1 SECOND FLOOR SEGMENT A-2	Architecture
A119	BUILDING 1 SECOND FLOOR SEGMENT B-2	Architecture
A120	BUILDING 1 SECOND FLOOR SEGMENT C-2	Architecture
A121	BUILDING 1 SECOND FLOOR SEGMENT D-2	Architecture
A1	1st FLOOR EXIT PLAN	Architecture
A122	UNIT PLAN A1 TYPE A & A2	DETAIL
A123	REANDERD ELEVATION	Architecture
D01	A1 Detail Plan	DETAIL
D05	A1 Loft_Kitchen and Toilet Detail	DETAIL
D03	A1 Loft Detail Plan_FF	DETAIL
D04	A1 Loft Detail Plan_SF	DETAIL
D02	A1_Kitchen and Toilet Detail	DETAIL

BLDG & BLOCK NOS.	UNITS	NUMBER	AREA	UNITS	NUMBER	AREA	UNITS	NUMBER	AREA	UNITS	NUMBER	AREA
BLDG- 1	1ST FLOOR			2ND FLOOR			3RD FLOOR			4TH FLOOR		
	A1	21	12668.04	A1	23	13874.52	A1	22	13271.28	A1 LOFT	19	11461.75
	A3	4	2947.24	A3	4	2947.24	A2	1	675.75	A1	5	3016.2
	B1	1	905.22	B1	2	1810.44	A3	6	4420.86	A2	1	675.75
	B2	1	983.26	B2	1	983.26	A4	1	790.37	A3	6	4420.86
	ST	4	2158.2	B3	1	966.67	B1	2	1810.44	A4	1	790.37
				C1	3	2928.69	B2	2	1966.52	B1	6	5431.32
				D1	4	5338.32	C1	3	2928.69	B2	2	1966.52
				ST	4	2158.2	D1	4	5338.32	ST LOFT	4	2715.32
							ST	4	2158.2			

REVIT ARCHITECTURE DRAWING SHEETS



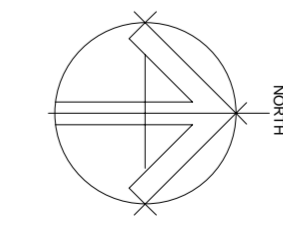
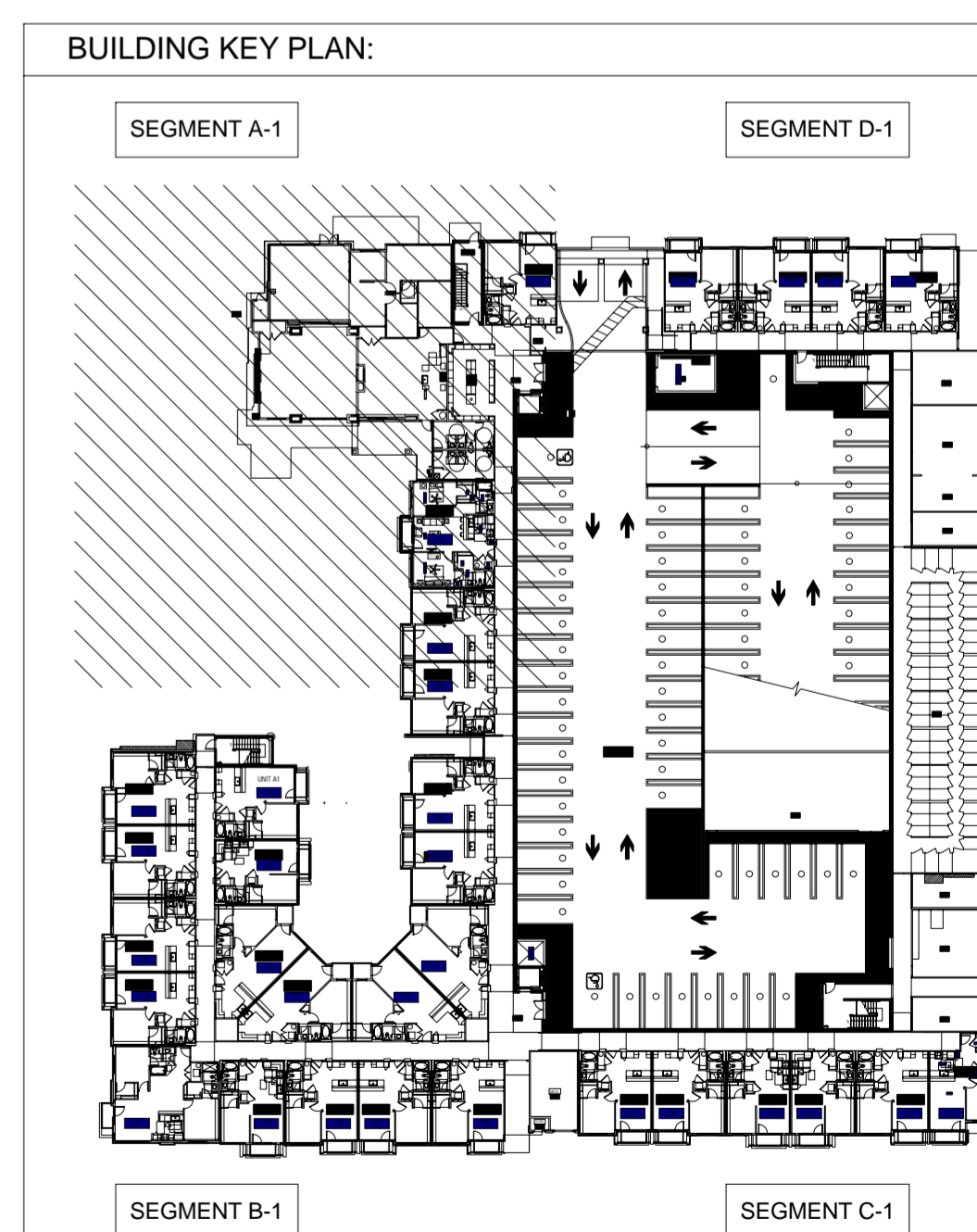
SYMBOL SCHEDULE

(MP)	METER PACK LOCATION REFER TO ELECTRICAL PLANS FOR EXACT LOCATION, CONFIGURATION AND SPECIFICATIONS. ELECTRICAL CONTRACTOR SHALL VERIFY SIZE, CONFIGURATION AND CODE REQUIREMENTS PRIOR TO START OF CONSTRUCTION (PER SHEET A13.2)
(T/C)	TELECOMMUNICATIONS TERMINAL BOARD AND CABLE TV DISTRIBUTION PANEL REFER TO ELECTRICAL PLANS FOR EXACT LOCATION. ELECTRICAL CONTRACTOR SHALL VERIFY SIZE, CONFIGURATION AND CODE REQUIREMENTS PRIOR TO START OF CONSTRUCTION. (PER SHEET A13.2)
(F)	OPTIONAL FIRE RISER LOCATION. SEE FLOOR AND SITE PLANS FOR LOCATION AND OTHER INFORMATION.
(F.E.)	PORTABLE FIRE EXTINGUISHER WITH CABINET NOT TO BE LOCKED. INSTALLED AT A MAXIMUM HEIGHT OF 4'-2". REFER TO DETAIL 89/D8, (LOCATED AT CLUBHOUSE COMMON AREAS ONLY)
(#)	REFER TO SHEETS FR.1, FR.2 & FR.3 FOR SOUND AND FIRE RATED DETAILS
(NO)	INDICATES DOOR NUMBER, REFER TO SHEET A12.2
(A)	INDICATES STORE FRONT WINDOW TYPE, REFER TO SHEET A12.2
(FUR)	INDICATES 5'-0" A.F.F. FURR DOWN CEILING AT ALL FLOORS, REFER TO DETAIL 91/D8. (SEE BUILDING PLAN PLATE HEIGHT OPTION)

BUILDING COMPONENT SCHEDULE:

BUILDING ELEMENT	CONSTRUCTION TYPE V_A	DETAIL REFERENCE
EXTERIOR BEARING WALL	1 HOUR RATED	3/FR1
INTERIOR BEARING WALL	1 HOUR RATED	10/FR1
INTERIOR NON-BEARING WALL	NON-RATED	11/FR1
UNIT SEPARATION WALL	1 HOUR RATED	2/FR1
FLOOR/CEILING ASSEMBLY (DWELLING UNIT)	1 HOUR RATED	4/FR1
FLOOR/CEILING ASSEMBLY (CORRIDORS)	1 HOUR RATED	5/FR1
ROOF/CEILING ASSEMBLY	1 HOUR RATED	7/FR1
STAIR ENCLOSURE	2 HOUR RATED	12/FR1
ELEVATOR SHAFT	2 HOUR RATED	12/FR1
ELEVATOR EQUIPMENT ROOM	2 HOUR RATED	9/FR1
MECHANICAL & ELECTRICAL ROOMS	1 HOUR RATED	3&10/FR1

- BUILDING PLAN NOTES**
- FOR TYPICAL UNIT PLANS SEE SHEETS A2.1.0 THROUGH SHEET A2.15.1.
 - ALL DIMENSIONS ARE TO FACE OF STUD OR FACE OF MASONRY UNLESS NOTED OTHERWISE.
 - REFER TO SHEETS A5.1.0 & A6.1.0 FOR ROOM FINISH SCHEDULE. BASE INTERIOR ROOM FINISH: WALLS AND CEILING - KNOCK DOWN TEXTURE, PAINTED. FLOORS - CARPET & PAD. UNLESS NOTED OTHERWISE IN THE ARCHITECTURAL OR INTERIOR DESIGN DRAWINGS.
 - COORDINATE LIGHT PLACEMENT WITH STRUCTURAL ENGINEER.



REVIT ARCHITECTURE DRAWING SHEETS

SYMBOL SCHEDULE

(MP) METER PACK LOCATION REFER TO ELECTRICAL PLANS FOR EXACT LOCATION, CONFIGURATION AND SPECIFICATIONS. ELECTRICAL CONTRACTOR SHALL VERIFY SIZE, CONFIGURATION AND CODE REQUIREMENTS PRIOR TO START OF CONSTRUCTION. (PER SHEET A13.2)

(T/C) TELECOMMUNICATIONS TERMINAL BOARD AND CABLE TV DISTRIBUTION PANEL REFER TO ELECTRICAL FOR EXACT LOCATION. ELECTRICAL CONTRACTOR SHALL VERIFY SIZE, CONFIGURATION AND CODE REQUIREMENTS PRIOR TO START CONSTRUCTION. (PER SHEET A13.2)

(F) OPTIONAL FIRE RISER LOCATION. SEE FLOOR AND SITE PLANS FOR LOCATION AND OTHER INFORMATION.

F.E. PORTABLE FIRE EXTINGUISHER WITH CABINET NOT TO BE LOCKED. INSTALLED AT A MAXIMUM HEIGHT OF 4'-2". REFER TO DETAIL 89/DB. (LOCATED AT CLUBHOUSE COMMON AREAS ONLY)

REFER TO SHEETS FR.1, FR.2 & FR.3 FOR SOUND AND FIRE RATED DETAILS

(NO) INDICATES DOOR NUMBER, REFER TO SHEET A12.1

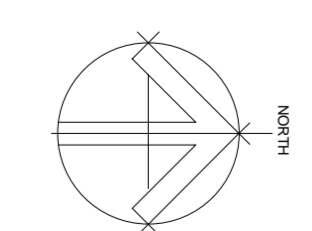
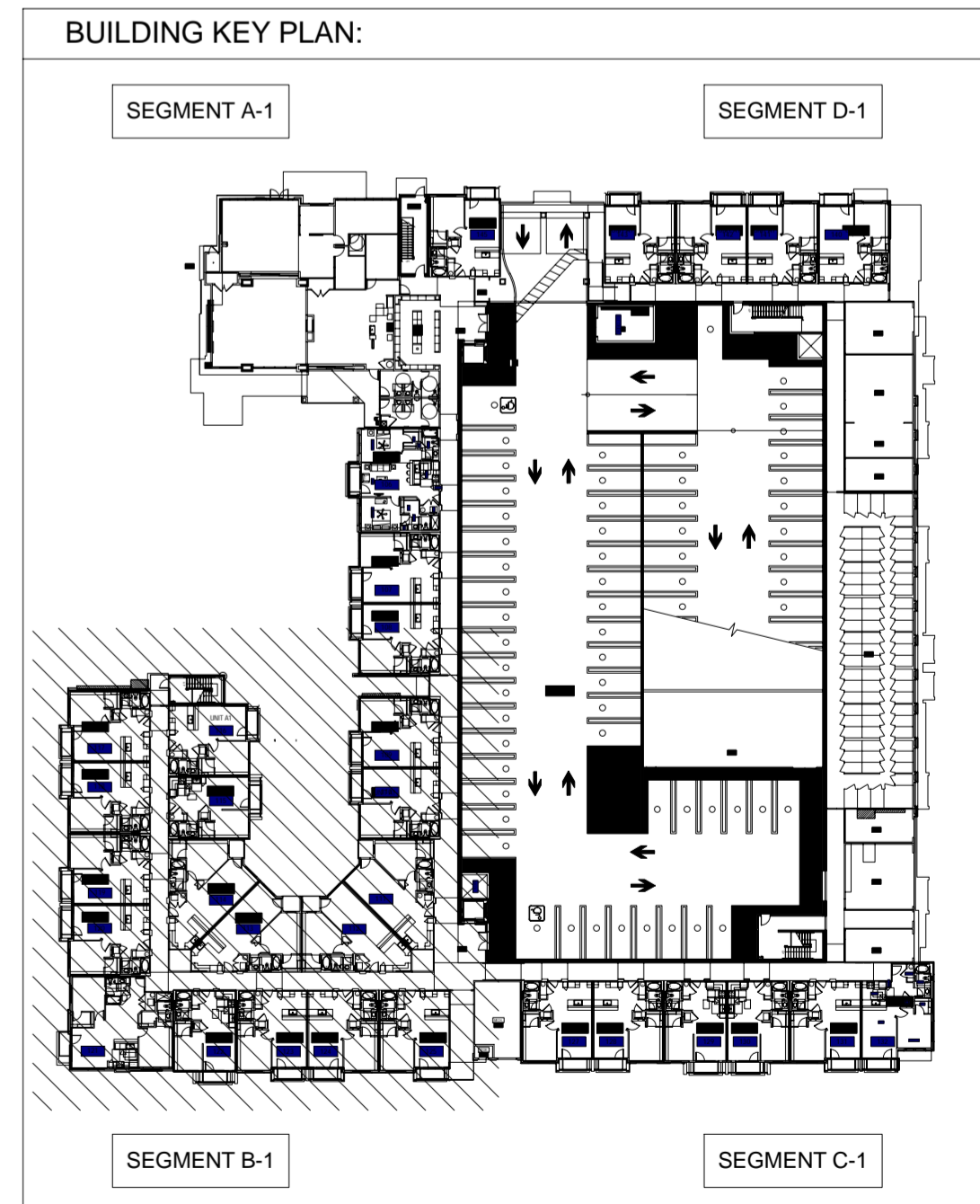
(A) INDICATES STORE FRONT WINDOW TYPE, REFER TO SHEET A12.2

INDICATES 8'-0" A.F.F. FURR DOWN CEILING AT ALL FLOORS, REFER TO DETAIL 91/DB. (SEE BUILDING PLAN PLATE HEIGHT OPTION)

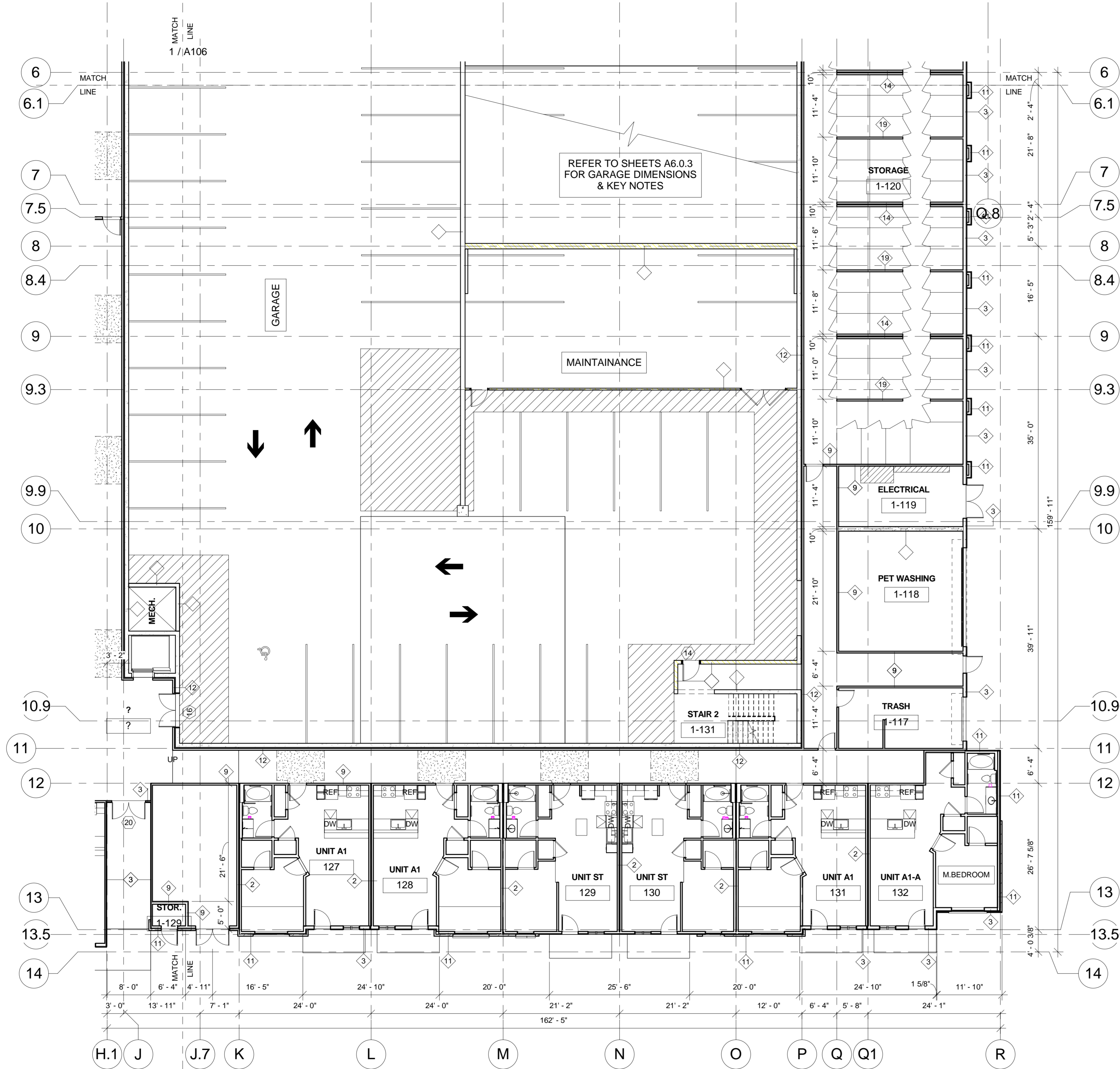
BUILDING COMPONENT SCHEDULE:

BUILDING ELEMENT	CONSTRUCTION TYPE V.A	DETAIL REFERENCE
EXTERIOR BEARING WALL	1 HOUR RATED	3/FR1
INTERIOR BEARING WALL	1 HOUR RATED	10/FR1
INTERIOR NON-BEARING WALL	NON-RATED	11/FR1
UNIT SEPARATION WALL	1 HOUR RATED	2/FR1
FLOOR/CEILING ASSEMBLY (DWELLING UNIT)	1 HOUR RATED	4/FR1
FLOOR/CEILING ASSEMBLY (CORRIDORS)	1 HOUR RATED	5/FR1
ROOF/CEILING ASSEMBLY	1 HOUR RATED	7/FR1
STAIR ENCLOSURE	2 HOUR RATED	12/FR1
ELEVATOR SHAFT	2 HOUR RATED	12/FR1
ELEVATOR EQUIPMENT ROOM	2 HOUR RATED	9/FR1
MECHANICAL & ELECTRICAL ROOMS	1 HOUR RATED	3&10/FR1

- BUILDING PLAN NOTES**
- FOR TYPICAL UNIT PLANS SEE SHEETS A2.1.0 THROUGH SHEET A2.15.1.
 - ALL DIMENSIONS ARE TO FACE OF STUD OR FACE OF MASONRY UNLESS NOTED OTHERWISE.
 - REFER TO SHEETS A5.1.0 & A6.1.0 FOR ROOM FINISH SCHEDULE. BASE INTERIOR ROOM FINISH: WALLS AND CEILING - KNOCK DOWN TEXTURE, PAINTED. FLOORS - CARPET & PAD, UNLESS NOTED OTHERWISE IN THE ARCHITECTURAL OR INTERIOR DESIGN DRAWINGS.
 - COORDINATE LIGHT PLACEMENT WITH STRUCTURAL ENGINEER.



REVIT ARCHITECTURE DRAWING SHEETS



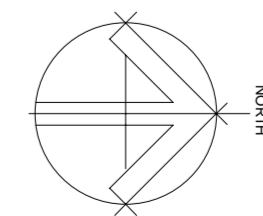
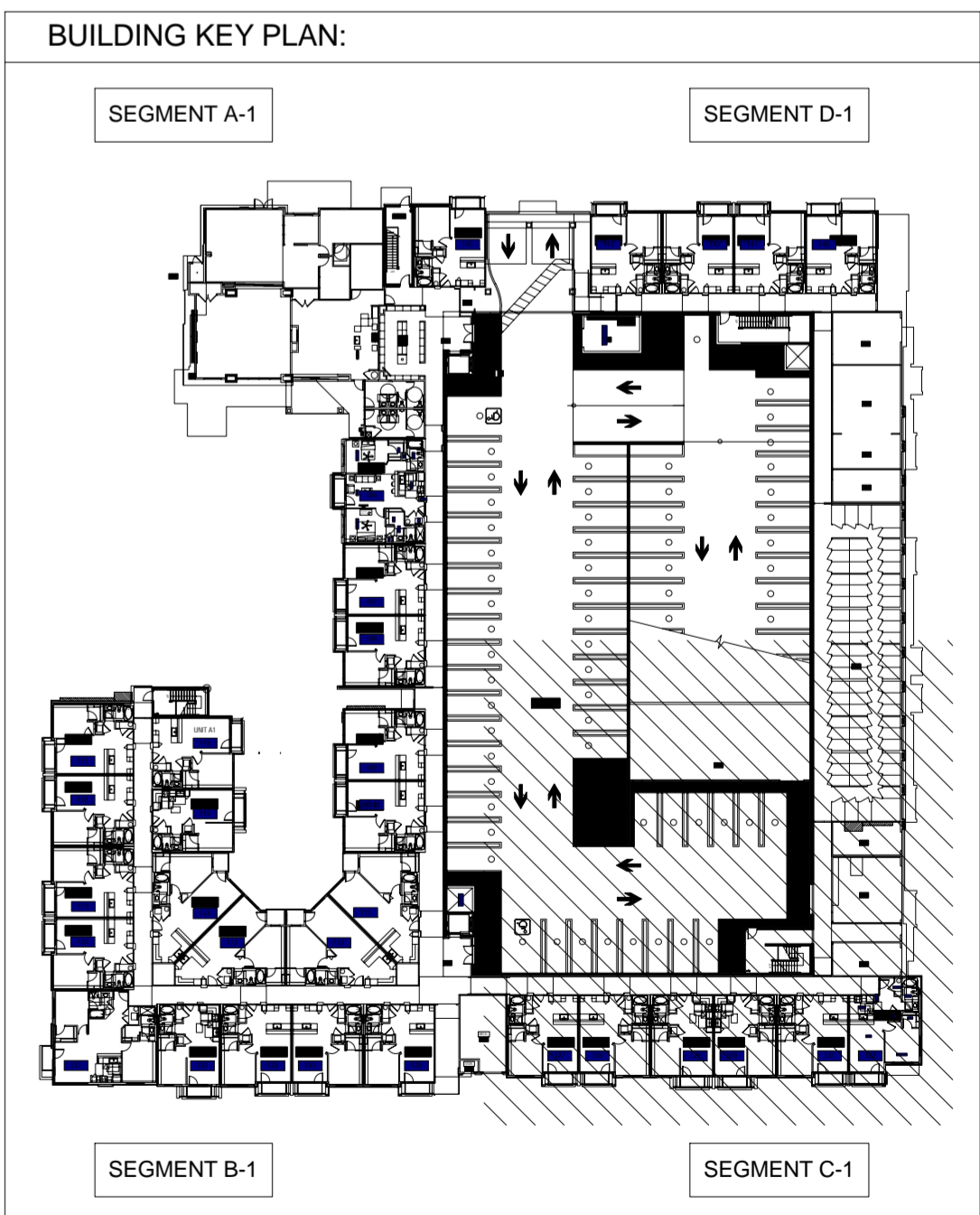
SYMBOL SCHEDULE

(MP)	METER PACK LOCATION REFER TO ELECTRICAL PLANS FOR EXACT LOCATION, CONFIGURATION AND SPECIFICATIONS. ELECTRICAL CONTRACTOR SHALL VERIFY SIZE, CONFIGURATION AND CODE REQUIREMENTS PRIOR TO START OF CONSTRUCTION. (PER SHEET A13.2)
(T/C)	TELECOMMUNICATIONS TERMINAL BOARD AND CABLE TV DISTRIBUTION PANEL REFER TO ELECTRICAL FOR EXACT LOCATION. ELECTRICAL CONTRACTOR SHALL VERIFY SIZE, CONFIGURATION AND CODE REQUIREMENTS PRIOR TO START CONSTRUCTION. (PER SHEET A13.2)
(F)	OPTIONAL FIRE RISER LOCATION. SEE FLOOR AND SITE PLANS FOR LOCATION AND OTHER INFORMATION.
(F.E.)	PORTABLE FIRE EXTINGUISHER WITH CABINET NOT TO BE LOCKED. INSTALLED AT A MAXIMUM HEIGHT OF 4'-2". REFER TO DETAIL 89/DB. (LOCATED AT CLUBHOUSE COMMON AREAS ONLY)
(S)	REFER TO SHEETS FR.1, FR.2 & FR.3 FOR SOUND AND FIRE RATED DETAILS
(NO)	INDICATES DOOR NUMBER, REFER TO SHEET A12.1
(A)	INDICATES STORE FRONT WINDOW TYPE, REFER TO SHEET A12.2
(C)	INDICATES 8'-0" A.F.F. FURR DOWN CEILING AT ALL FLOORS. REFER TO DETAIL 91/DB. (SEE BUILDING PLAN PLATE HEIGHT OPTION)

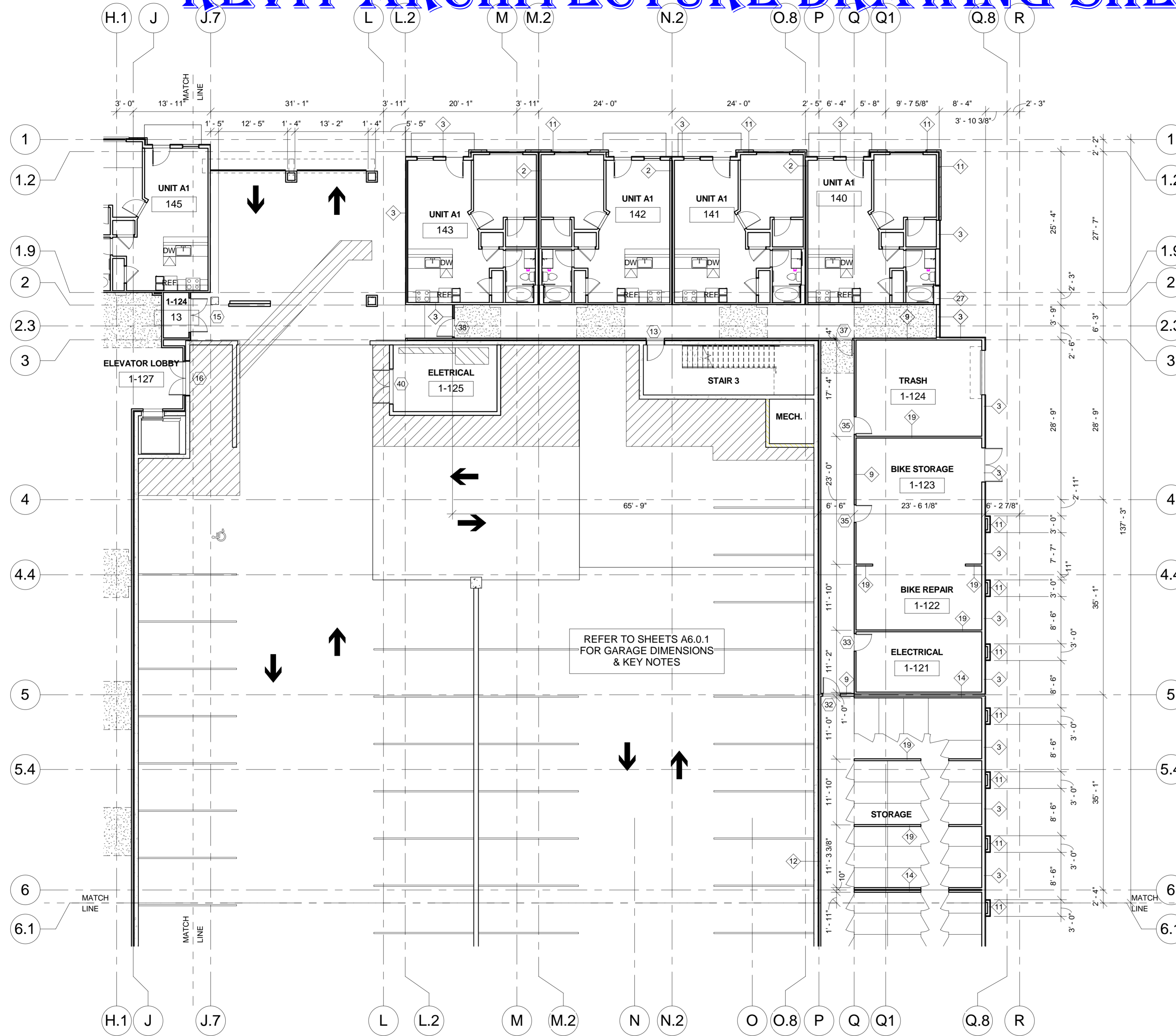
BUILDING COMPONENT SCHEDULE:

BUILDING ELEMENT	CONSTRUCTION TYPE V_A	DETAIL REFERENCE
EXTERIOR BEARING WALL	1 HOUR RATED	3/FR1
INTERIOR BEARING WALL	1 HOUR RATED	10/FR1
INTERIOR NON-BEARING WALL	NON-RATED	11/FR1
UNIT SEPARATION WALL	1 HOUR RATED	2/FR1
FLOOR/CEILING ASSEMBLY (DWELLING UNIT)	1 HOUR RATED	4/FR1
FLOOR/CEILING ASSEMBLY (CORRIDORS)	1 HOUR RATED	5/FR1
ROOF/CEILING ASSEMBLY	1 HOUR RATED	7/FR1
STAIR ENCLOSURE	2 HOUR RATED	12/FR1
ELEVATOR SHAFT	2 HOUR RATED	12/FR1
ELEVATOR EQUIPMENT ROOM	2 HOUR RATED	9/FR1
MECHANICAL & ELECTRICAL ROOMS	1 HOUR RATED	3&10/FR1

- BUILDING PLAN NOTES**
- FOR TYPICAL UNIT PLANS SEE SHEETS A2.1.0 THROUGH SHEET A2.15.1.
 - ALL DIMENSIONS ARE TO FACE OF STUD OR FACE OF MASONRY UNLESS NOTED OTHERWISE.
 - REFER TO SHEETS A5.1.0 & A6.1.0 FOR ROOM FINISH SCHEDULE. BASE INTERIOR ROOM FINISH: WALLS AND CEILING - KNOCK DOWN TEXTURE, PAINTED, FLOORS - CARPET & PAD, UNLESS NOTED OTHERWISE IN THE ARCHITECTURAL OR INTERIOR DESIGN DRAWINGS.
 - COORDINATE LIGHT PLACEMENT WITH STRUCTURAL ENGINEER.



REVIT ARCHITECTURE DRAWING SHEETS



SYMBOL SCHEDULE

(MP) METER PACK LOCATION REFER TO ELECTRICAL PLANS FOR EXACT LOCATION, CONFIGURATION AND SPECIFICATIONS. ELECTRICAL CONTRACTOR SHALL VERIFY SIZE, CONFIGURATION AND CODE REQUIREMENTS PRIOR TO START OF CONSTRUCTION. (PER SHEET A13.2)

(TC) TELECOMMUNICATIONS TERMINAL BOARD AND CABLE TV DISTRIBUTION PANEL REFER TO ELECTRICAL FOR EXACT LOCATION, CONFIGURATION AND CODE REQUIREMENTS PRIOR TO START OF CONSTRUCTION. (PER SHEET A13.2)

(F) OPTIONAL FIRE RISER LOCATION. SEE FLOOR AND SITE PLANS FOR LOCATION AND OTHER INFORMATION.

F.E. PORTABLE FIRE EXTINGUISHER WITH CABINET NOT TO BE LOCKED. INSTALLED AT A MAXIMUM HEIGHT OF 4'-2". REFER TO DETAIL 89/D8. (LOCATED AT CLUBHOUSE COMMON AREAS ONLY)

REFER TO SHEETS FR.1, FR.2 & FR.3 FOR SOUND AND FIRE RATED DETAILS

(NO) INDICATES DOOR NUMBER, REFER TO SHEET A12.1

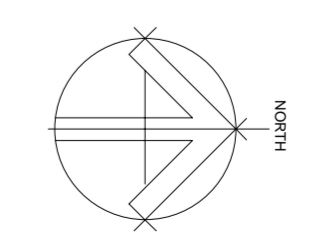
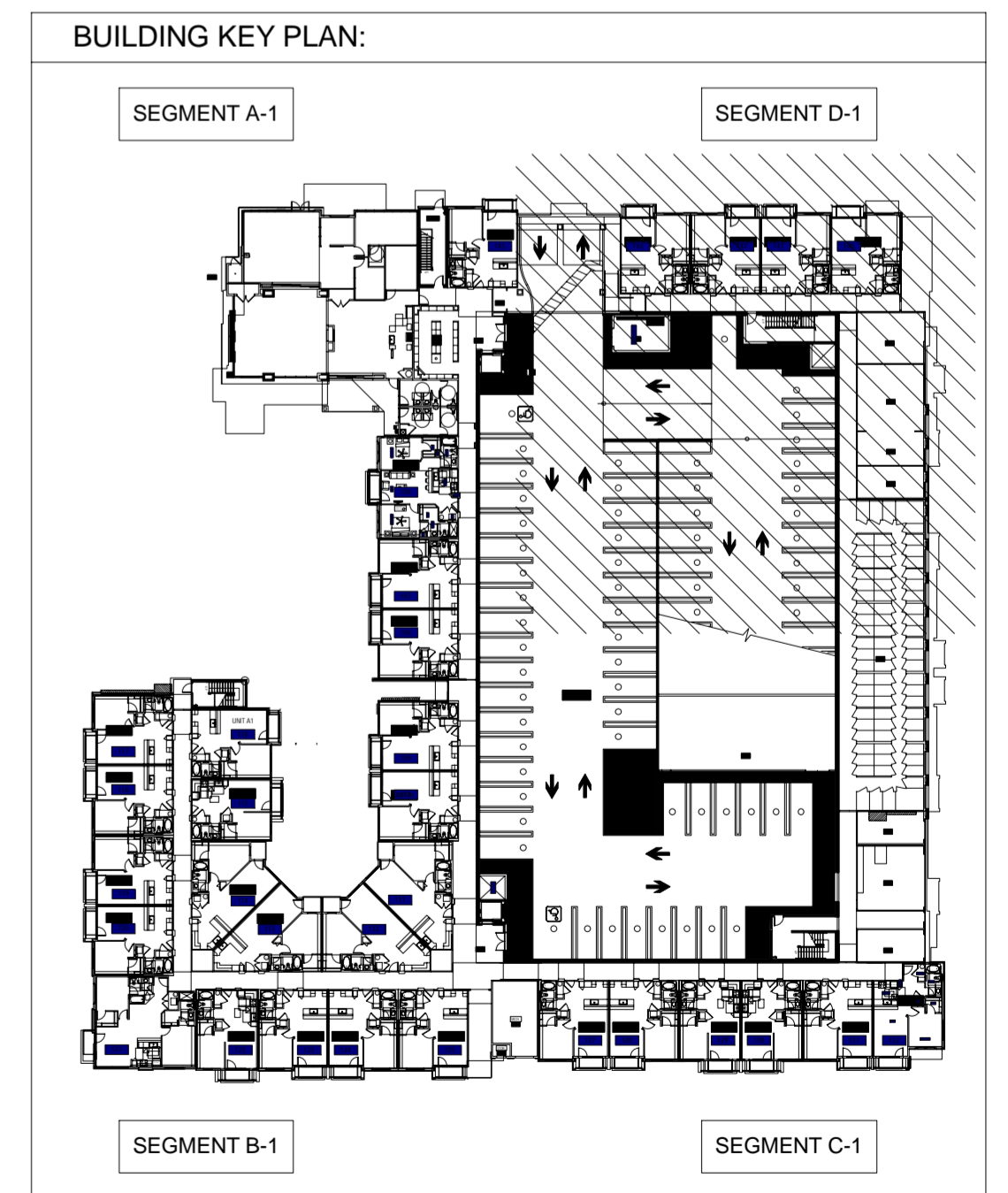
A INDICATES STORE FRONT WINDOW TYPE, REFER TO SHEET A12.2

INDICATES 8'-0" A.F.F. FURR DOWN CEILING AT ALL FLOORS, REFER TO DETAIL 91/D8 (SEE BUILDING PLAN PLATE HEIGHT OPTION)

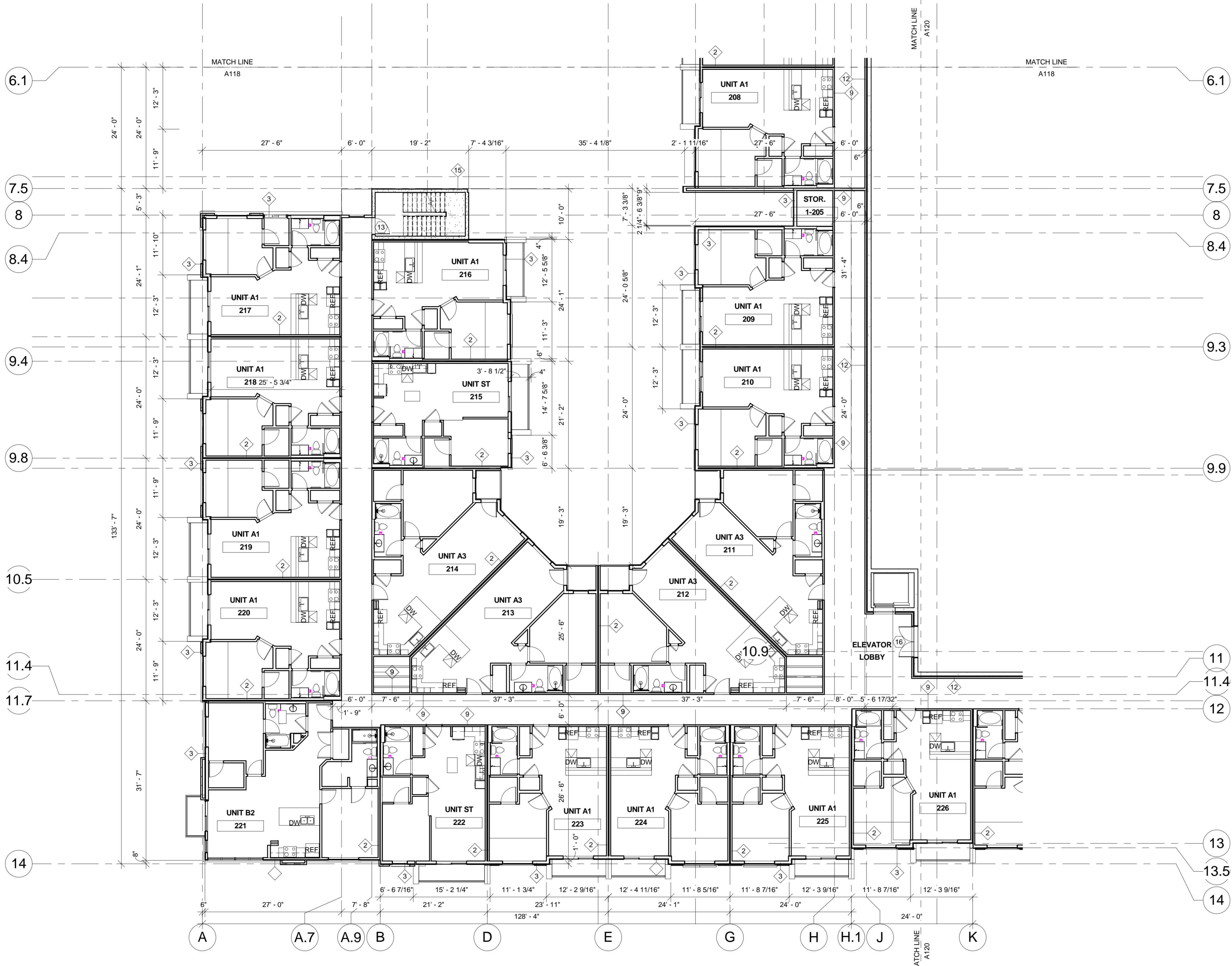
BUILDING COMPONENT SCHEDULE:

BUILDING ELEMENT	CONSTRUCTION TYPE V_A	DETAIL REFERENCE
EXTERIOR BEARING WALL	1 HOUR RATED	3/FR1
INTERIOR BEARING WALL	1 HOUR RATED	10/FR1
INTERIOR NON-BEARING WALL	NON-RATED	11/FR1
UNIT SEPARATION WALL	1 HOUR RATED	2/FR1
FLOOR /CEILING ASSEMBLY (DWELLING UNIT)	1 HOUR RATED	4/FR1
FLOOR /CEILING ASSEMBLY (CORRIDORS)	1 HOUR RATED	5/FR1
ROOF/CEILING ASSEMBLY	1 HOUR RATED	7/FR1
STAIR ENCLOSURE	2 HOUR RATED	12/FR1
ELEVATOR SHAFT	2 HOUR RATED	12/FR1
ELEVATOR EQUIPMENT ROOM	2 HOUR RATED	9/FR1
MECHANICAL & ELECTRICAL ROOMS	1 HOUR RATED	3&10/FR1

- BUILDING PLAN NOTES**
- FOR TYPICAL UNIT PLANS SEE SHEETS A2.1.0 THROUGH SHEET A2.15.1.
 - ALL DIMENSIONS ARE TO FACE OF STUD OR FACE OF MASONRY UNLESS NOTED OTHERWISE.
 - REFER TO SHEETS A5.1.0 & A6.1.0 FOR ROOM FINISH SCHEDULE, BASE INTERIOR ROOM FINISH: WALLS AND CEILING - KNOCK DOWN TEXTURE, PAINTED, FLOORS - CARPET & PAD, UNLESS NOTED OTHERWISE IN THE ARCHITECTURAL OR INTERIOR DESIGN DRAWINGS.
 - COORDINATE LIGHT PLACEMENT WITH STRUCTURAL ENGINEER.



REVIT ARCHITECTURE DRAWING SHEETS



SYMBOL SCHEDULE

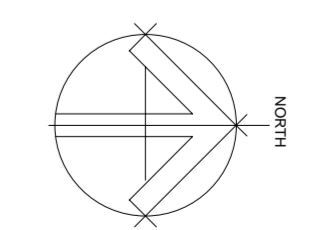
- (MP) METER PAK LOCATION REFER TO ELECTRICAL PLANS FOR EXACT LOCATION, CONFIGURATION AND SPECIFICATIONS. ELECTRICAL CONTRACTOR SHALL VERIFY SIZE, CONFIGURATION AND CODE REQUIREMENTS PRIOR TO START OF CONSTRUCTION. (PER SHEET A13.2)
- (T/C) TELECOMMUNICATIONS TERMINAL BOARD AND CABLE TV DISTRIBUTION PANEL REFER TO ELECTRICAL FOR EXACT LOCATION. ELECTRICAL CONTRACTOR SHALL VERIFY SIZE, CONFIGURATION AND CODE REQUIREMENTS PRIOR TO START CONSTRUCTION. (PER SHEET A13.2)
- (F) OPTIONAL FIRE RISER LOCATION. SEE FLOOR AND SITE PLANS FOR LOCATION AND OTHER INFORMATION.
- F.E. PORTABLE FIRE EXTINGUISHER WITH CABINET NOT TO BE LOCKED. INSTALLED AT A MAXIMUM HEIGHT OF 4'-2". REFER TO DETAIL 89/D8. (LOCATED AT CLUBHOUSE COMMON AREAS ONLY)
- (4) REFER TO SHEETS FR1, FR2 & FR3 FOR SOUND AND FIRE RATED DETAILS
- (NO) INDICATES DOOR NUMBER, REFER TO SHEET A12.1
- (A) INDICATES STORE FRONT WINDOW TYPE, REFER TO SHEET A12.2
- (S) INDICATES s'-0" A.F.F. FURR DOWN CEILING AT ALL FLOORS. REFER TO DETAIL 91/D8. (SEE BUILDING PLAN PLATE HEIGHT OPTION)

BUILDING COMPONENT SCHEDULE:

BUILDING ELEMENT	CONSTRUCTION TYPE V_A	DETAIL REFERENCE
EXTERIOR BEARING WALL	1 HOUR RATED	3/FR1
INTERIOR BEARING WALL	1 HOUR RATED	10/FR1
INTERIOR NON-BEARING WALL	NON-RATED	11/FR1
UNIT SEPARATION WALL	1 HOUR RATED	2/FR1
FLOOR /CEILING ASSEMBLY (DWELLING UNIT)	1 HOUR RATED	4/FR1
FLOOR /CEILING ASSEMBLY (CORRIDORS)	1 HOUR RATED	5/FR1
ROOF/CEILING ASSEMBLY	1 HOUR RATED	7/FR1
STAIR ENCLOSURE	2 HOUR RATED	12/FR1
ELEVATOR SHAFT	2 HOUR RATED	12/FR1
ELEVATOR EQUIPMENT ROOM	2 HOUR RATED	9/FR1
MECHANICAL & ELECTRICAL ROOMS	1 HOUR RATED	3&10/FR1

- BUILDING PLAN NOTES**
1. FOR TYPICAL UNIT PLANS SEE SHEETS A2.1.0 THROUGH SHEET A2.15.1.
 2. ALL DIMENSIONS ARE TO FACE OF STUD OR FACE OF MASONRY UNLESS NOTED OTHERWISE.
 3. REFER TO SHEETS A5.1.0 & A6.1.0 FOR ROOM FINISH SCHEDULE. BASE INTERIOR ROOM FINISH: WALLS AND CEILING - KNOCK DOWN TEXTURE, PAINTED. FLOORS - CARPET & PAD. UNLESS NOTED OTHERWISE IN THE ARCHITECTURAL OR INTERIOR DESIGN DRAWINGS.
 4. COORDINATE LIGHT PLACEMENT WITH STRUCTURAL ENGINEER.

BUILDING 1 SECOND FLOOR SEGMENT
 B-2
 3/32" = 1'-0"



REVIT ARCHITECTURE DRAWING SHEETS



1 Section B
3/16" = 1'-0"

REVIT ARCHITECTURE DRAWING SHEETS



① North Elevation
3/32" = 1'-0"

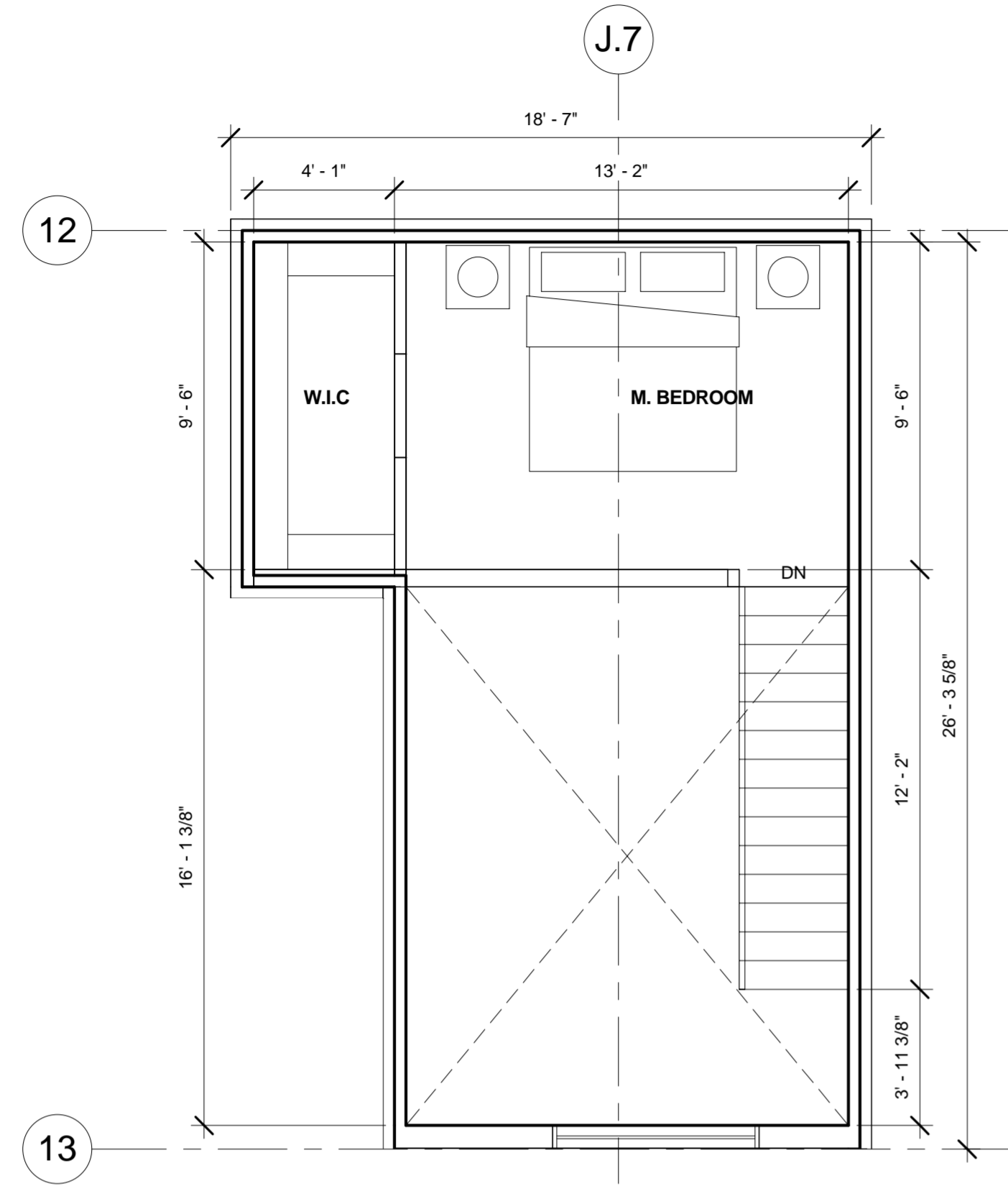


② BUCHANAN STREET ELEVATION
3/32" = 1'-0"

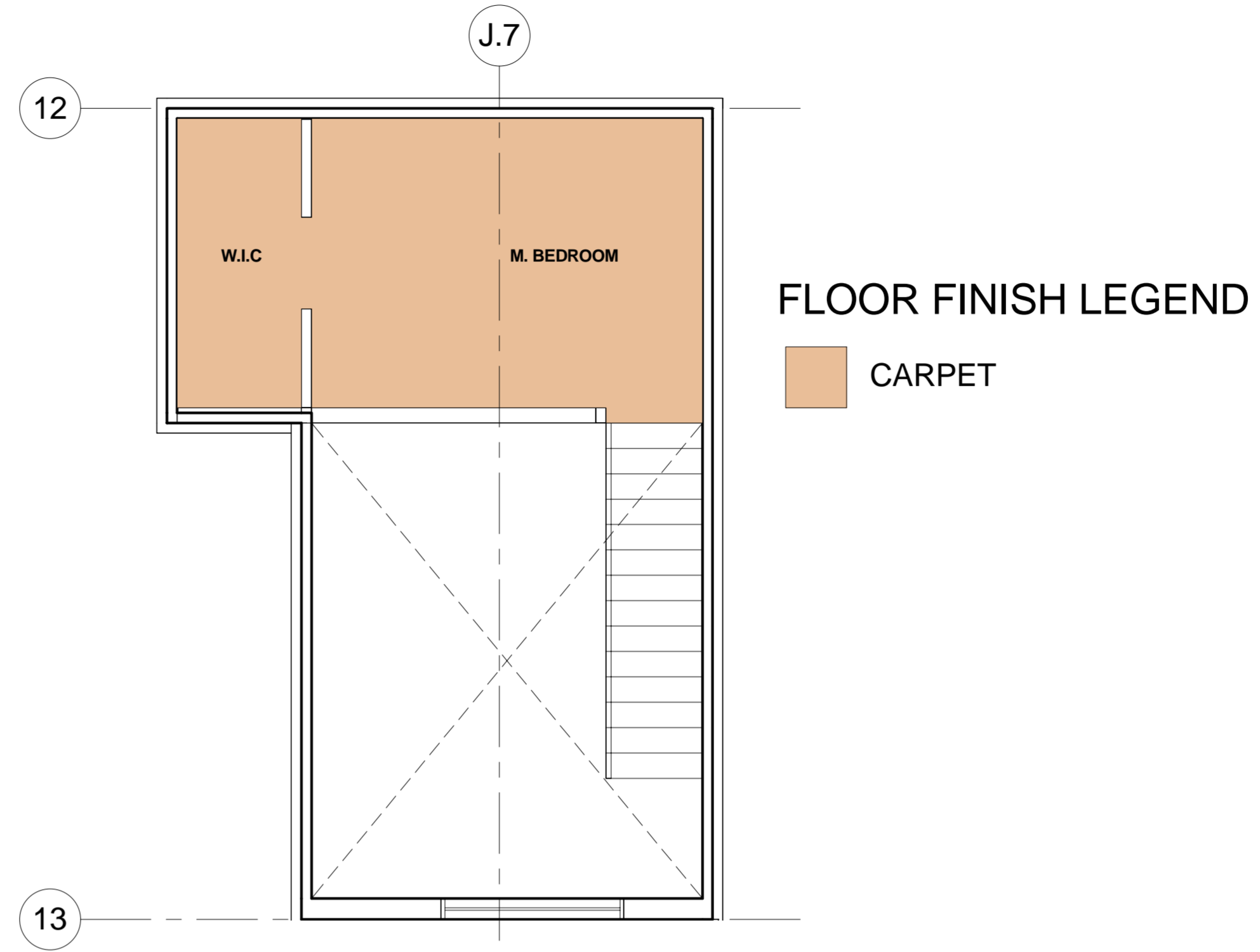
REVIT ARCHITECTURE DRAWING SHEETS



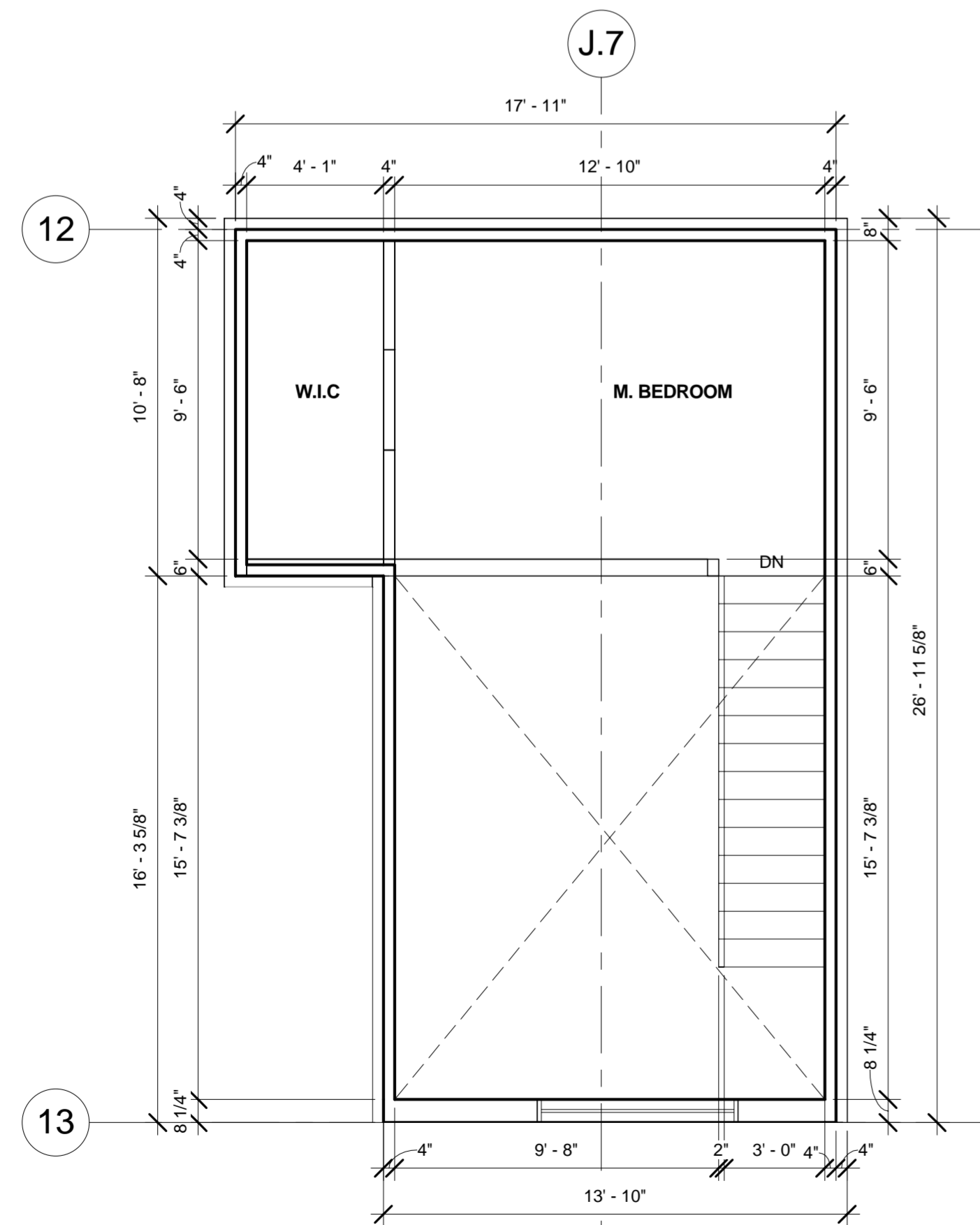
REVIT ARCHITECTURE DRAWING SHEETS



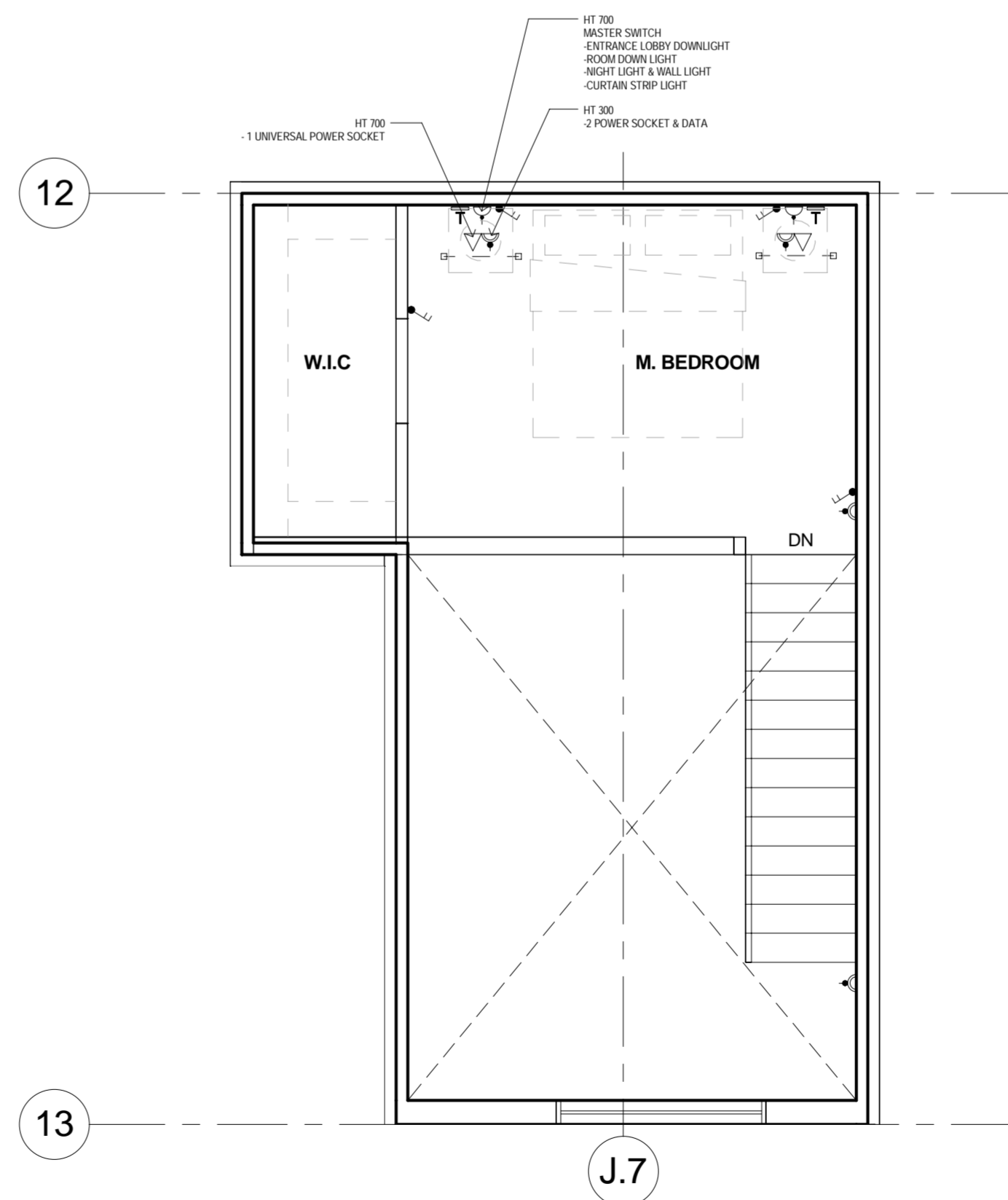
1 UNIT A1 LOFT 2ND FLOOR- GA PLAN
1/4" = 1'-0"



2 UNIT A1 LOFT 2ND FLOOR- FINISH PLAN-
1/4" = 1'-0"



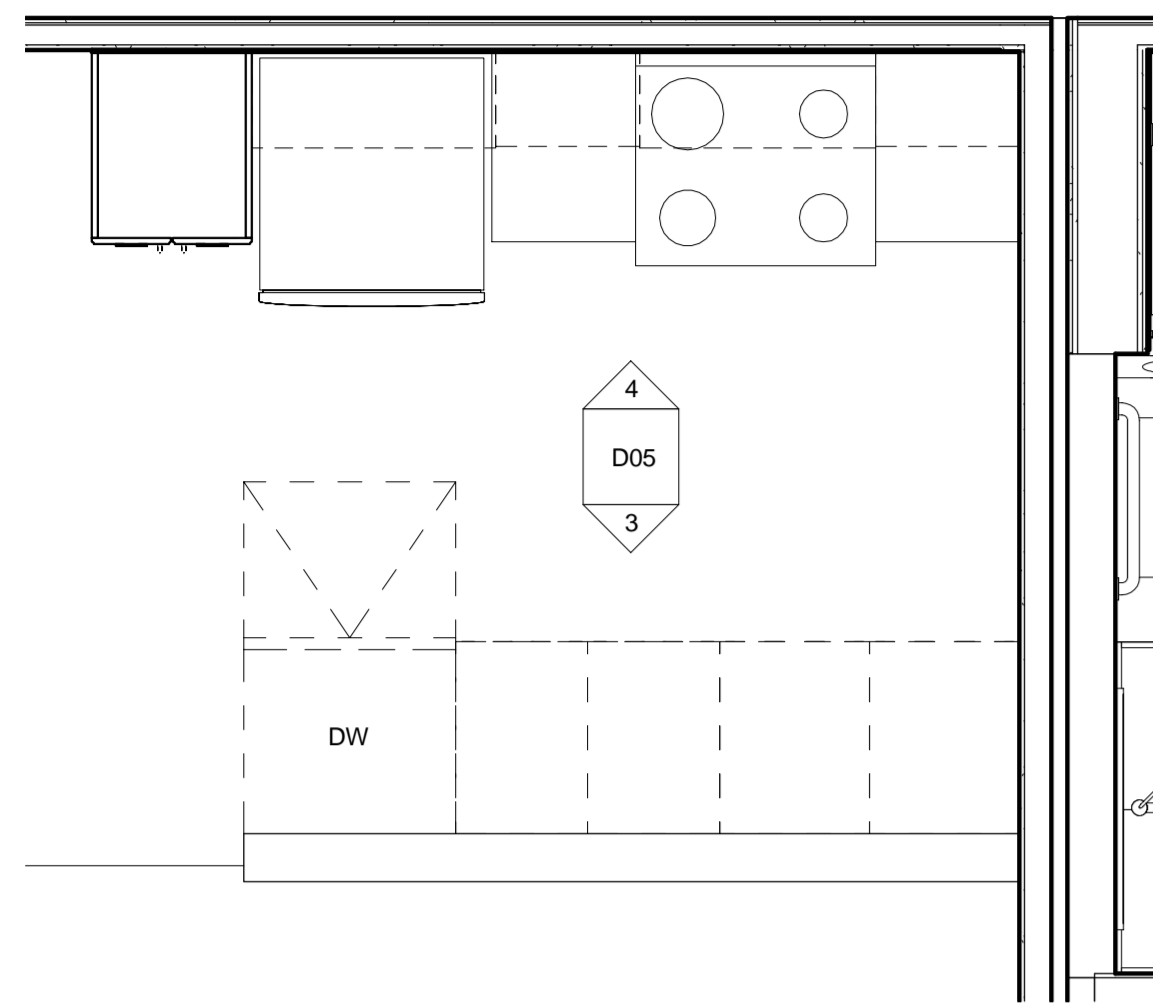
3 UNIT A1 LOFT 2ND FLOOR- PARTITION
PLAN
1/4" = 1'-0"



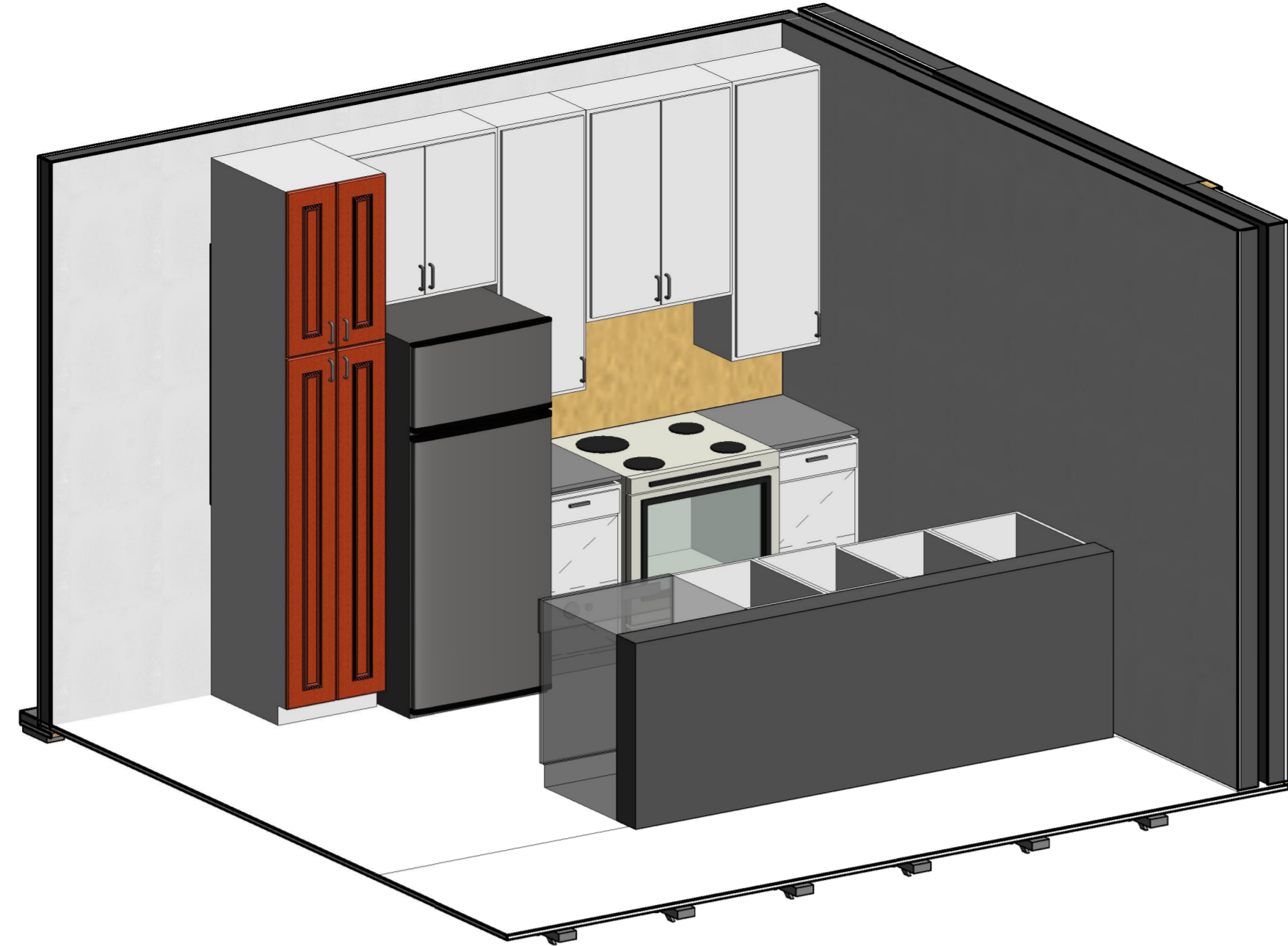
4 UNIT A1 LOFT 2ND FLOOR- POWER DATA
PLAN
1/4" = 1'-0"

LEGEND	
SMALL / POWER DATA	
	SINGLE SWITCHED SOCKET OUTLET
	TWIN SWITCHED SOCKET OUTLET
	TELEPHONE
	THERMOSTAT & AC CONTROLS
	2-WAY SWITCH
	SWITCHES FOR APPLIANCES WASHING MACHINE/ DRYER, DISHWASHER
	SWITCH FOR HOB IGNITION
	FIRE EXTINGUISHER
	FIRE BLANKET
	GAS METER
	GAS SWITCH
	GAS DETECTOR
	BELL PUSH, DND & MUR INDICATOR LIGHT
	KEY CARD
	STRIP NIGHT LIGHT
	IP RATED LED STRIP LIGHT AT SHELF ABOVE
	MASTER KEY CARD SWITCH TO CONTROL ALL ELECTRICAL / LIGHTINGS EXCEPT FRIDGE/ WASHING MACHINE/OVEN/MICROWAVE/HOOD & RELAY SWITCH FOR FAN COIL TO LOW SPEED

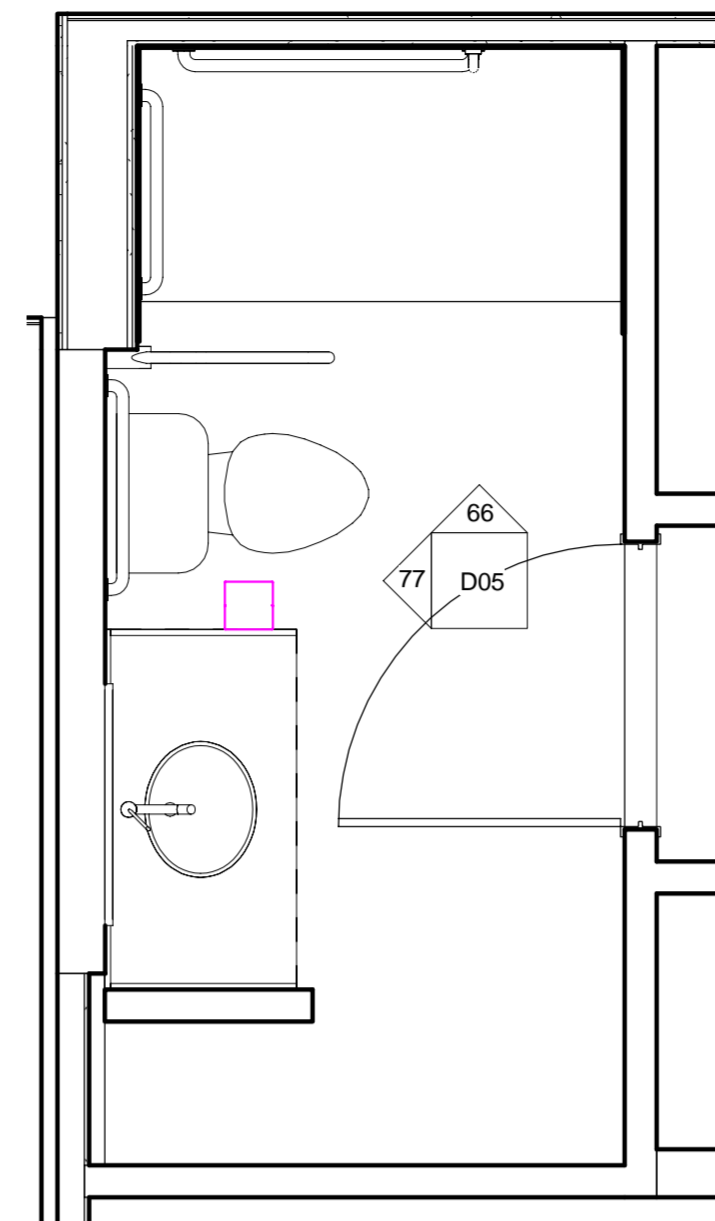
REVIT ARCHITECTURE DRAWING SHEETS



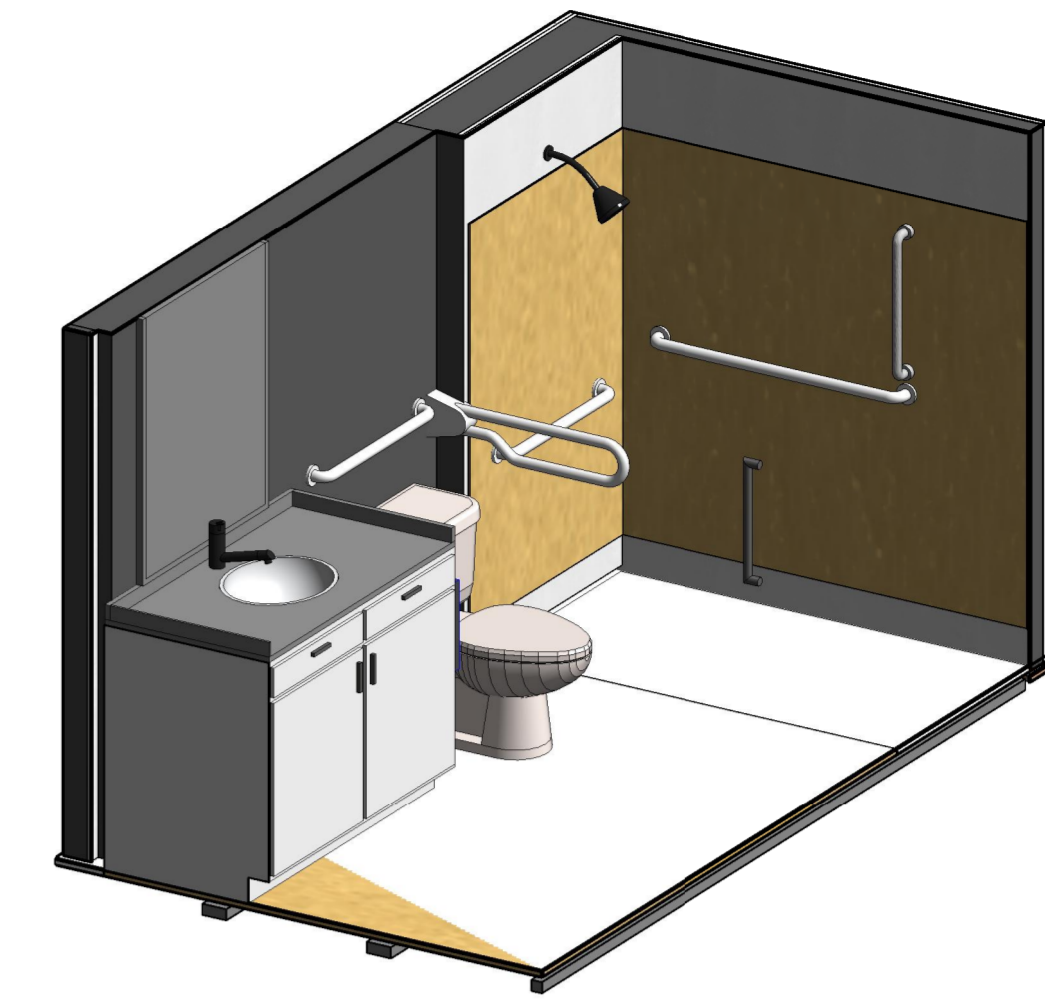
1 A1 LOFT_KITCHEN DETAIL
1/2" = 1'-0"



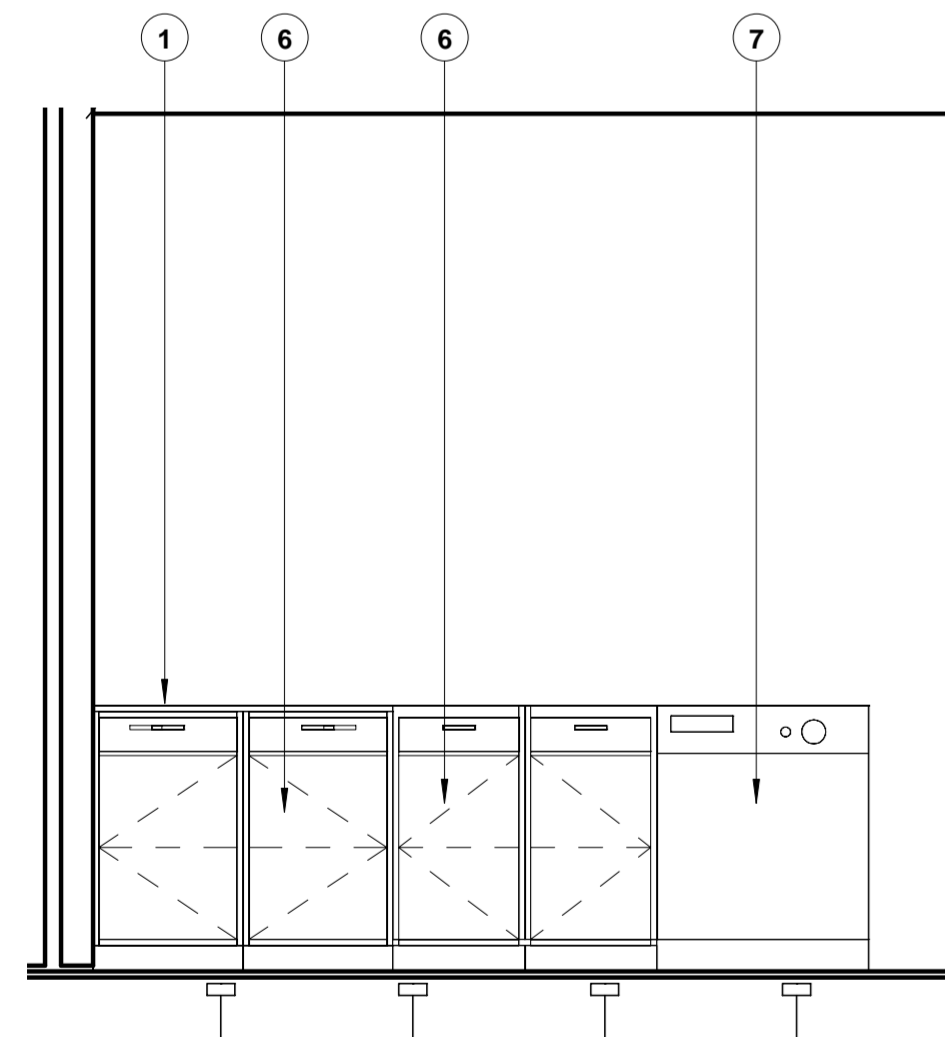
2 KITCHEN DETAIL_A1 LOFT_3D



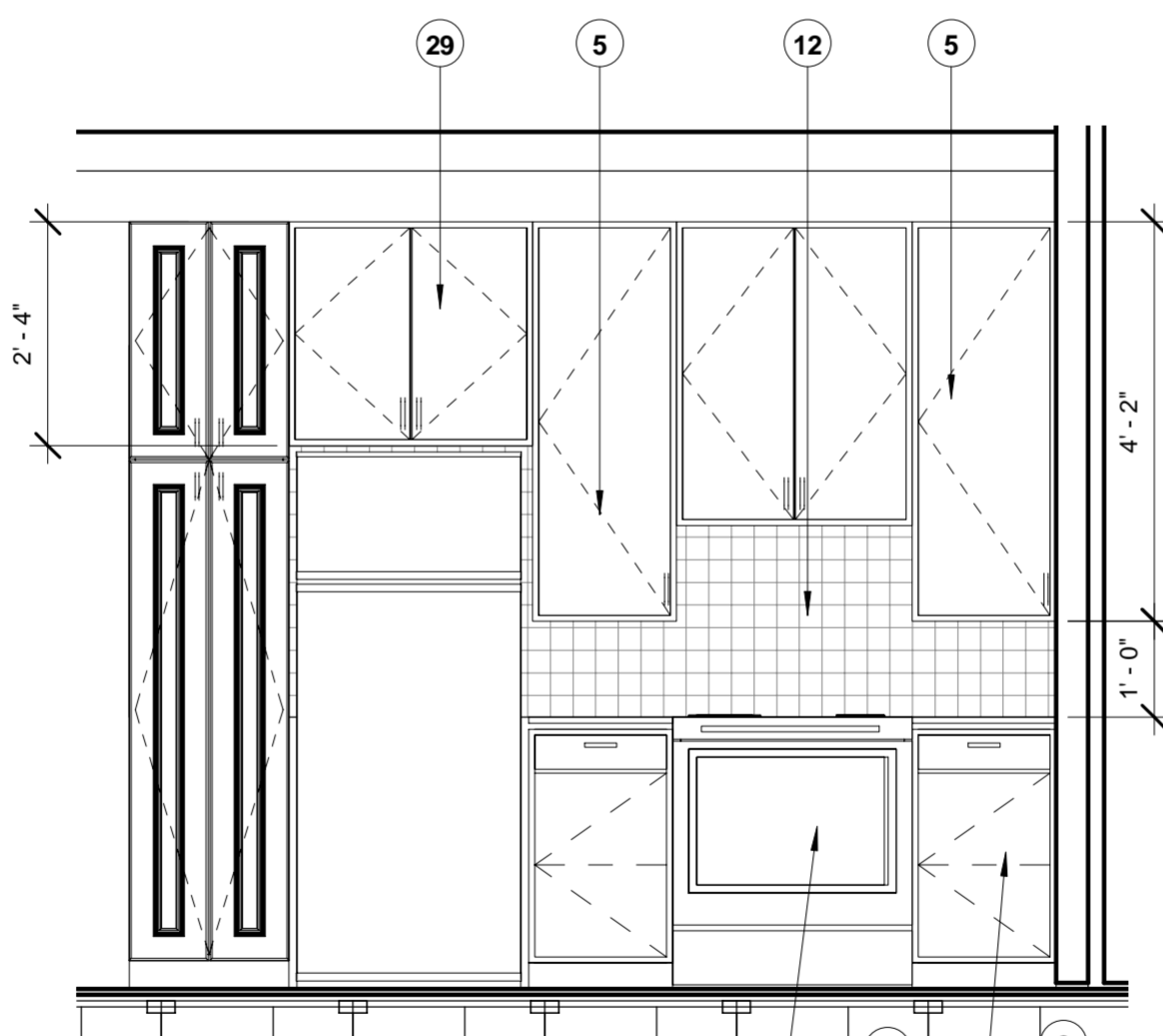
55 A1 LOFT_TOILET DETAIL
1/2" = 1'-0"



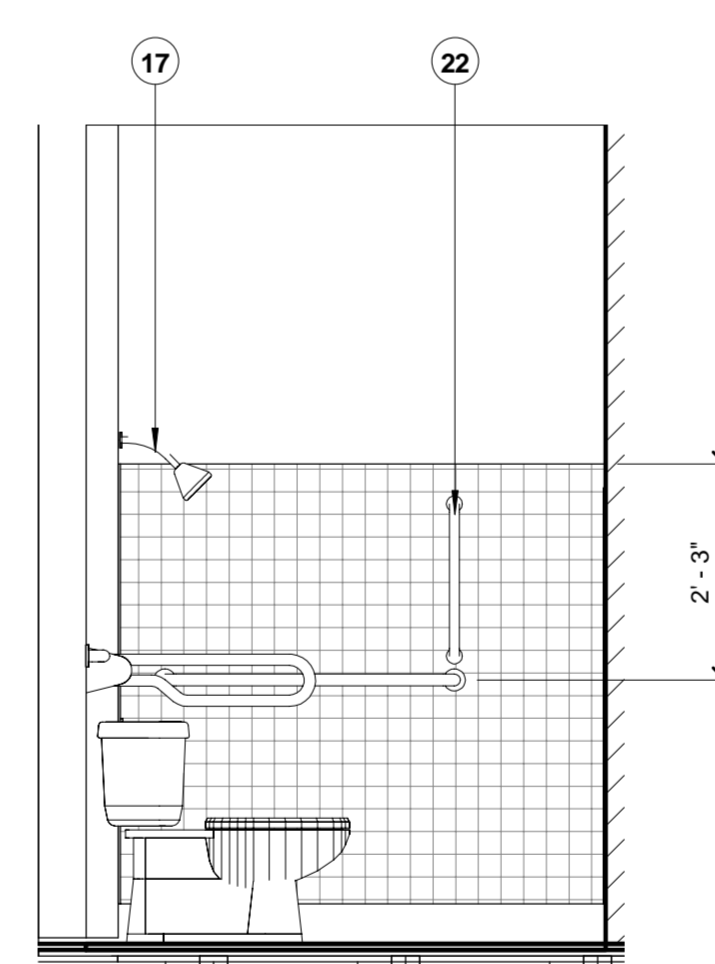
5 TOILET DETAIL_A1 LOFT_3D



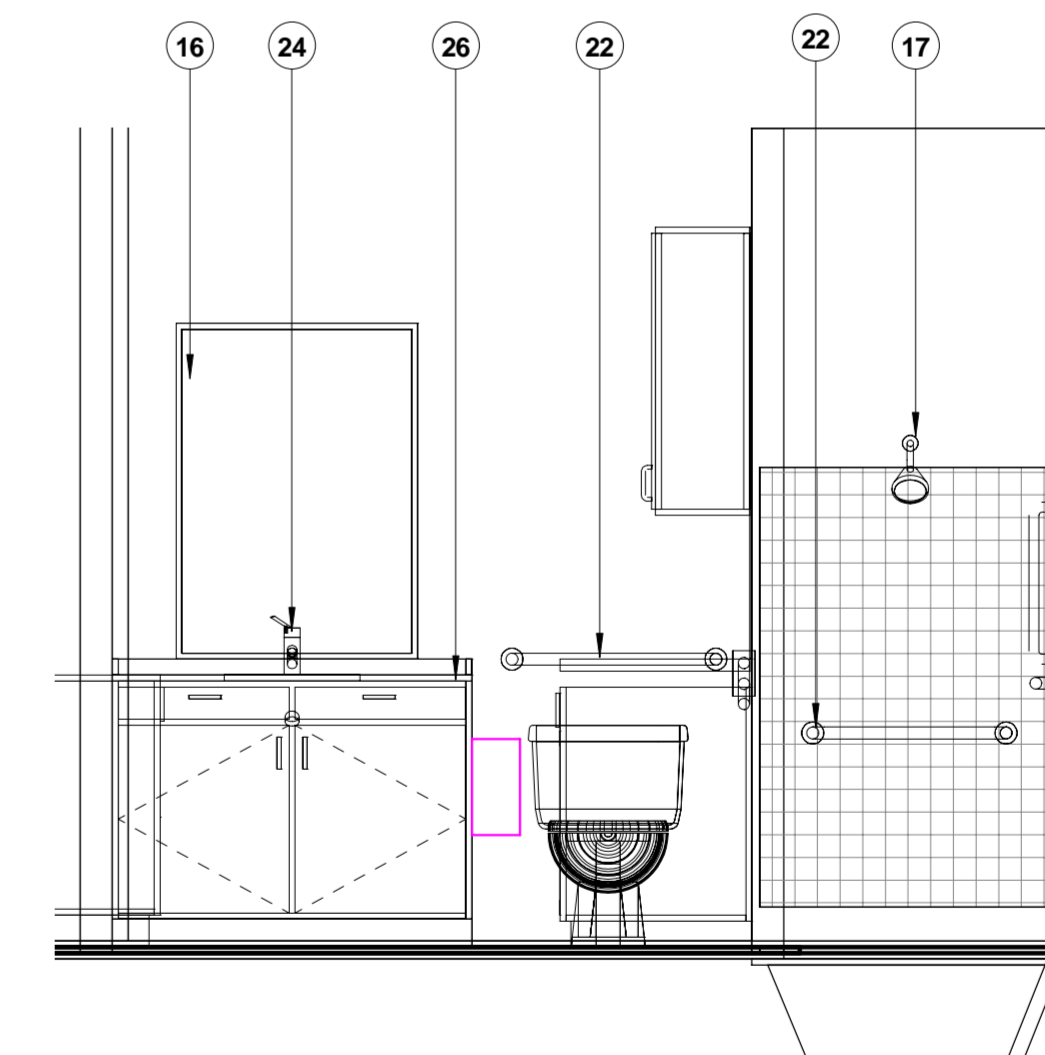
3 A1 LOFT_KITCHEN ELEVATION 1
1/2" = 1'-0"



4 A1 LOFT_KITCHEN ELEVATION 2
1/2" = 1'-0"



66 A1 LOFT_TOILET ELEVATION 1
1/2" = 1'-0"



77 A1 LOFT_TOILET ELEVATION 2
1/2" = 1'-0"

1. COUNTERTOP @ 34" A.F.F. PER ANSI 117.1, 1003.12.3.2
2. COUNTERTOP WITH SINK AND DISPOSAL PER ANSI 117.1, 1003.12.4
3. REMOVABLE BASE CABINET AT KITCHEN SINK MUST BE REMOVABLE WITHOUT REMOVING OR REPLACEMENT OF THE SINK. FINISH FLOOR MUST EXTEND UNDER SUCH CABINETS AND WALLS BEHIND AND SURROUNDING CABINETS MUST BE FINISHED.
4. WASHER & DRYER PER ANSI 117.1, 1003.10 & 611
5. 42" UPPER CABINET - FINISH SURFACE OF BOTTOM SHELF SHALL BE AT 44" A.F.F.
6. BASE CABINET
7. DISHWASHER - PER ANSI 117.1, 1003.12.5.3
8. REFRIGERATOR - PER ANSI 117.1, 1003.12.5.6
9. RANGE/OVEN WITH EXHAUST HOOD PER ANSI 117.1, 1003.12.5.5. (UNIT C1 TO HAVE A COOKTOP W/ EXHAUST HOOD ABOVE - NOT SLIDE IN RANGE/OVEN COMBO)
10. FACE FRAME WASHER/DRYER FULL HGT. PER ANSI 117.1, 1003.14
11. REMOVABLE BASE CABINET @ WORKSPACE 36" CLR. MUST BE REMOVABLE WITHOUT REMOVING OR REPLACEMENT OF THE SINK. FINISH FLOOR MUST EXTEND UNDER SUCH CABINETS AND WALLS BEHIND AND SURROUNDING CABINETS MUST BE FINISHED PER ANSI 117.1, 1003.12.3.1
12. FULL HEIGHT MOSAIC TILE BACKSPLASH - SEE SPECS AND FINISH SCHEDULE
13. TOWEL BAR/LINEN RACK - SEE SPECS AND FINISH SCHEDULE
14. SHOWER ROD, MOUNTED @ ±5'-10" TO CENTERLINE A.F.F.
15. TOILET PAPER DISPENSER - PER ANSI 117.1, 604.7 & 309.4
16. 30"x 42" FRAMED MIRROR - INSTALLED PER ANSI 117.1, 1003.11.2.3
17. SHOWER HEAD
18. HAND SHOWER W/ 59" HOSE ANSI 117.1, 607.6
19. 24" WALL MOUNTED LIGHT FIXTURE, CENTER ABOVE LAVATORY & MIRROR - TYPICAL UNLESS SHOWN OTHERWISE
20. CERAMIC TILE BATHTUB SURROUND PER ANSI 117.1, 1003.11.2.5.1 & 607
21. BATHTUB CONTROLS PER ANSI 117.1, 607.5
22. GRAB BAR BACKING PER 1003.11.1, 604.5, 607.4, 608.3, 608.2.1.3, 608.2.2.3, & 608.2.3.2. BARS NOT REQUIRED IF BACKING IS INSTALLED PER 1003.11.1 EXCEPTION 2, & FHA
23. MICROWAVE PER ANSI 117.1, 1003.12.5
24. REMOVABLE BASE CABINET @ LAVATORY PER ANSI 117.1, 1003.11.2.2 & 609. REMOVABLE BASE CABINET MUST BE REMOVABLE WITHOUT REMOVING OR REPLACEMENT OF THE SINK. FINISH FLOOR MUST EXTEND UNDER SUCH CABINETS AND WALLS BEHIND AND SURROUNDING CABINETS MUST BE FINISHED.
25. WATER CLOSET PER ANSI 117.1, 1003.11.2.4
26. WORKSURFACE WITH TOP OF COUNTERTOP AT 34" A.F.F. MAX.
27. SHELVES PER UNIT PLAN
28. OPEN TO BEYOND
29. 24" DEEP UPPER CABINET
30. BANK OF DRAWERS
31. NOT USED
32. TEMPERED SHOWER DOORS - SEE SPECS
33. CORBEL - SEE DETAIL 95/D8
34. COUNTERTOP
35. WASHER & DRYER
36. 42" UPPER CABINET
37. BASE CABINET
38. DISHWASHER
39. REFRIGERATOR W/ ICE MAKER
40. RANGE / OVEN WITH MICROWAVE ABOVE
41. KITCHEN SINK WITH DISPOSAL
42. TOWEL BAR/LINEN RACK - FINISH SCHEDULE
43. SHOWER ROD, MOUNTED @ ±5'-10" TO CENTERLINE A.F.F.
44. TOILET PAPER DISPENSER
45. 30"x 42" FRAMED MIRROR
46. SHOWER HEAD
47. 24" WALL MOUNTED LIGHT FIXTURE, CENTER ABOVE LAVATORY & MIRROR - TYPICAL UNLESS SHOWN OTHERWISE
48. CERAMIC TILE BATHTUB SURROUND
49. BATHTUB CONTROLS
50. GRAB BAR BACKING PER 1004.11.1, 604.5, 607.4, 608.3, 608.2.1.3, 608.2.2.3, & 608.2.3.2. & FHA.
51. LAVATORY W/ 4" BACKSPLASH
52. WATER CLOSET
53. FACE FRAME PANTRY CABINET FULL HEIGHT.
54. OPEN TO BEYOND
55. 24" DEEP UPPER CABINET
56. EXTENDED COUNTERTOP @ ISLAND-SEE FLOOR PLAN
57. FULL HEIGHT MOSAIC TILE BACKSPLASH - SEE FINISH SCHEDULE
58. WINDOW PER FLOOR PLAN
59. BANK OF DRAWERS
60. COOKTOP WITH BASE CABINET BELOW.
61. CERAMIC TILE SHOWER SURROUND W/ GLASS DOORS TEMPERED
62. DOUBLE OVEN - FINISH SCHEDULE
63. CORBEL - SEE DETAIL 95/D8