

# PORTFOLIO BY SANJANA R METI

---

(SELECTED WORKS 2014 - 2019)



- 
1. GUEST HOUSE
  2. APARTMEN DESIGN
  3. BEACH RESORT
  4. ACCOMODATION -  
COTTAGES AND VILLA
  5. URBAN DESIGN
  6. PUB DESIGN
  7. CONTAINER CAFE
  8. FURNITURE DESIGN
  9. RESTAURANT
  10. KITCHEN
  11. OTHERS

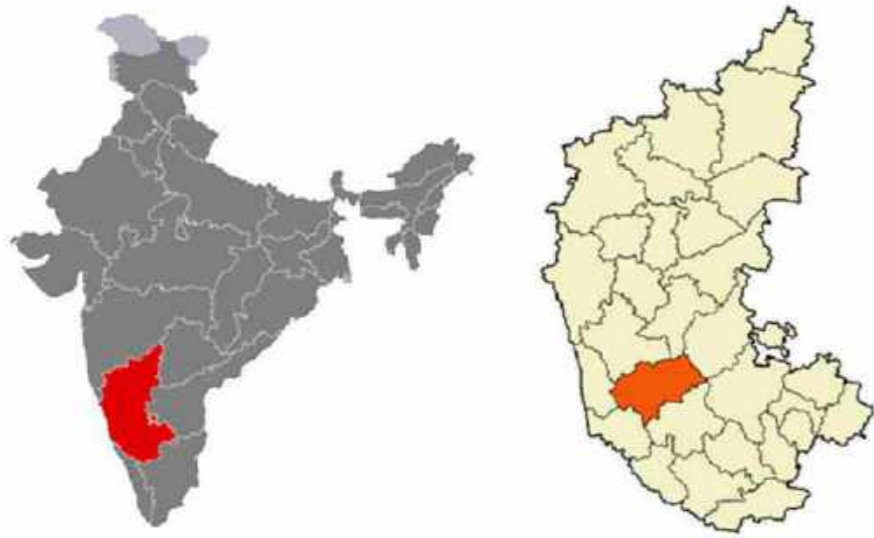
# GUEST HOUSE

## CHIKMAGALUR, INDIA

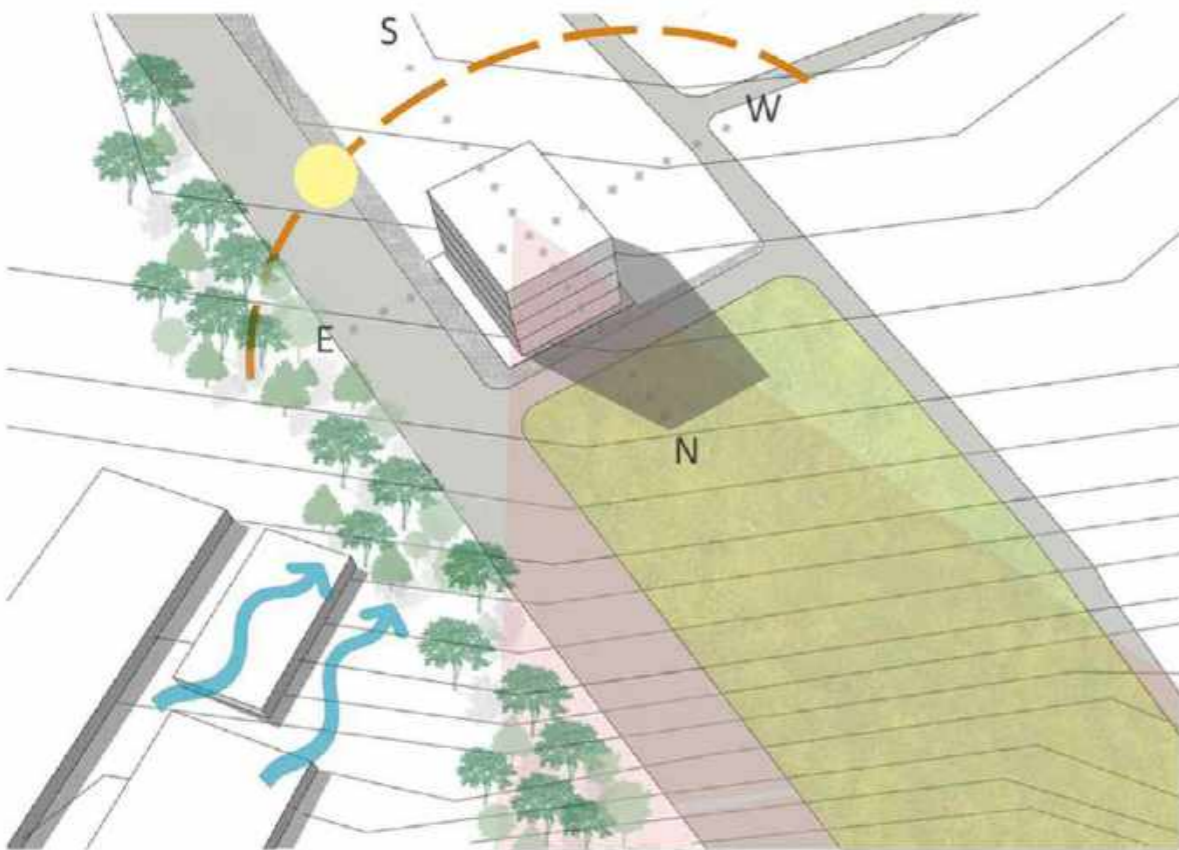
The project is a guest house in Chikmagalur, planned strategically keeping the climatic conditions and sustainability in mind. The concept of this project is the "thotti mane" which is a traditional housing style of that region.

The project uses eco-friendly materials which are locally sourced hence reducing the cost of transportation. The main materials being used in this project are CSEB blocks. Compressed Stabilized Earth Blocks, are made on site which reduces the need to spend on the transportation of materials. The sizes of blocks used in this project mainly are  
 1. FULL BRICKS 24cm x 24cm x 9cm. 2. HALF BRICKS 12cm x 24cm x 9cm.  
 3. Blocks with a semi-circular cut in the center are used for electrical wiring.

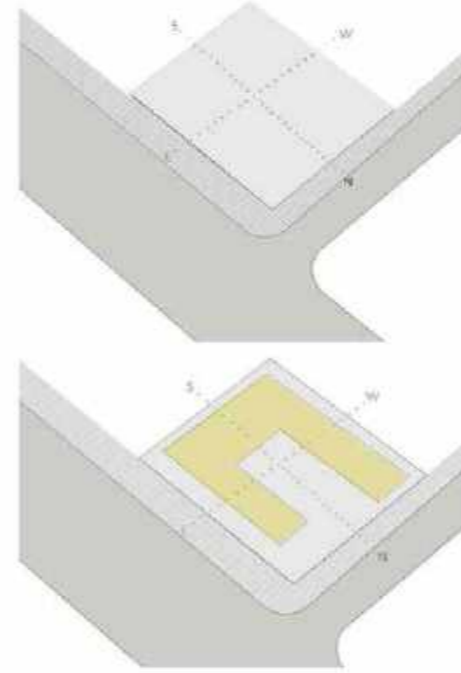
### LOCATION AND ANALYSIS



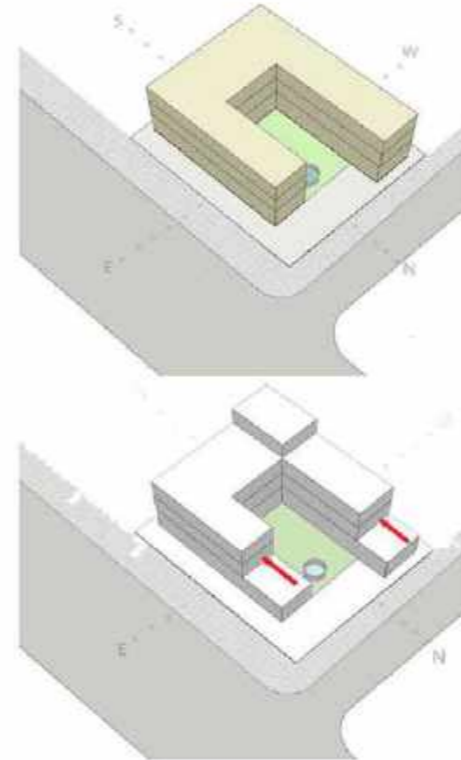
The site is located in Chikmagalur, India. It has a view of the mountains and a park towards its North and trees on the East side.



### FORM DEVELOPMENT



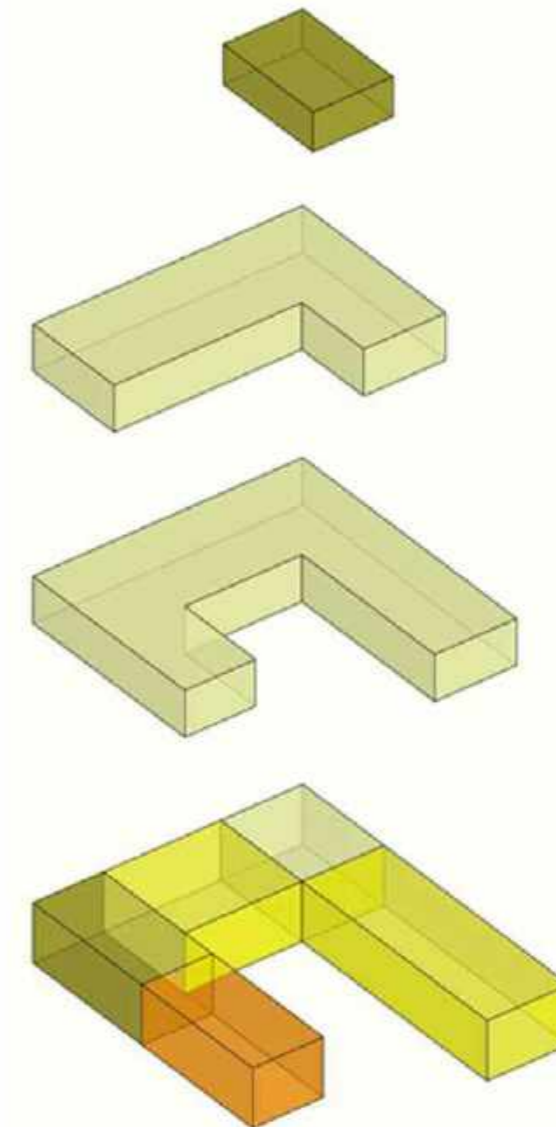
The planning was done around a courtyard, following a typical design of the traditional houses of that area.



Massing was pushed inside in order to create terraces which allowed a view from each of the rooms.



### SITE ZONING

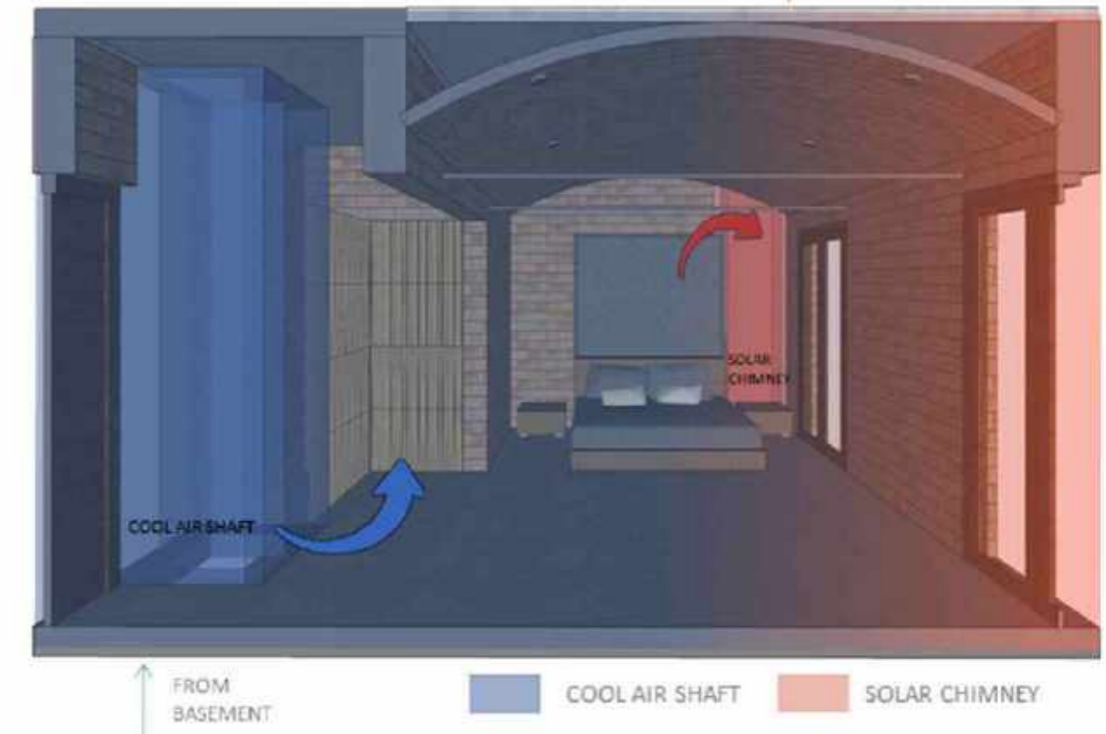


- private rooms
- semi public spaces - dining, recreation and reception
- public - event space
- services

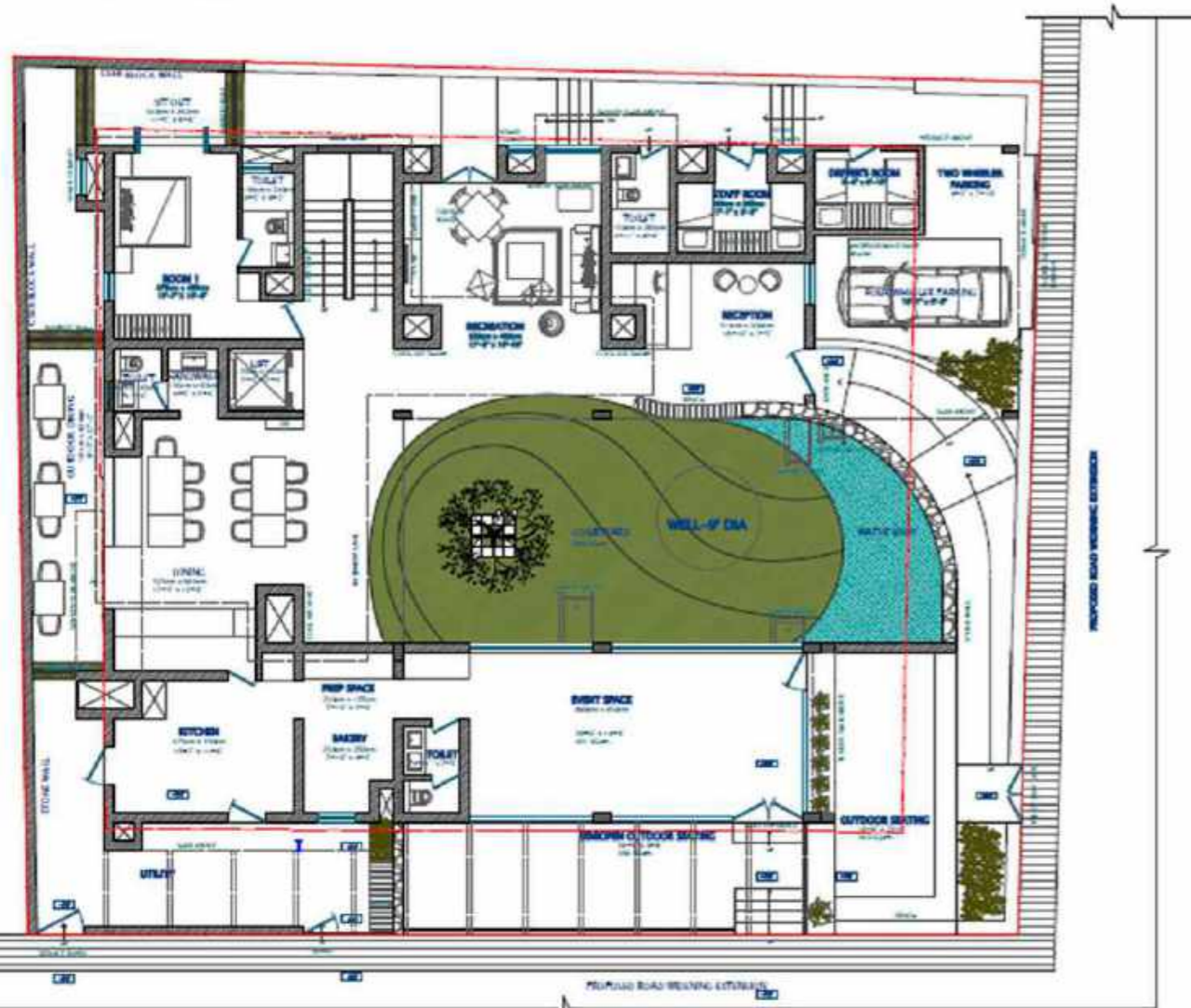
The site has been zoned into private spaces, public spaces, semi - public spaces and services. There is a good amount of privacy maintained by giving separate entrances to the public spaces.

Apart from the usage of CSEB blocks, many sustainable elements such as Earth Air Tunnel to minimize artificial cooling, use of filler slabs and vault roofs to minimize the use of concrete, presence of a well which caters to all the water requirements has been incorporated. Stepped terraces have been incorporated to allow every room to have a view of the mountains.

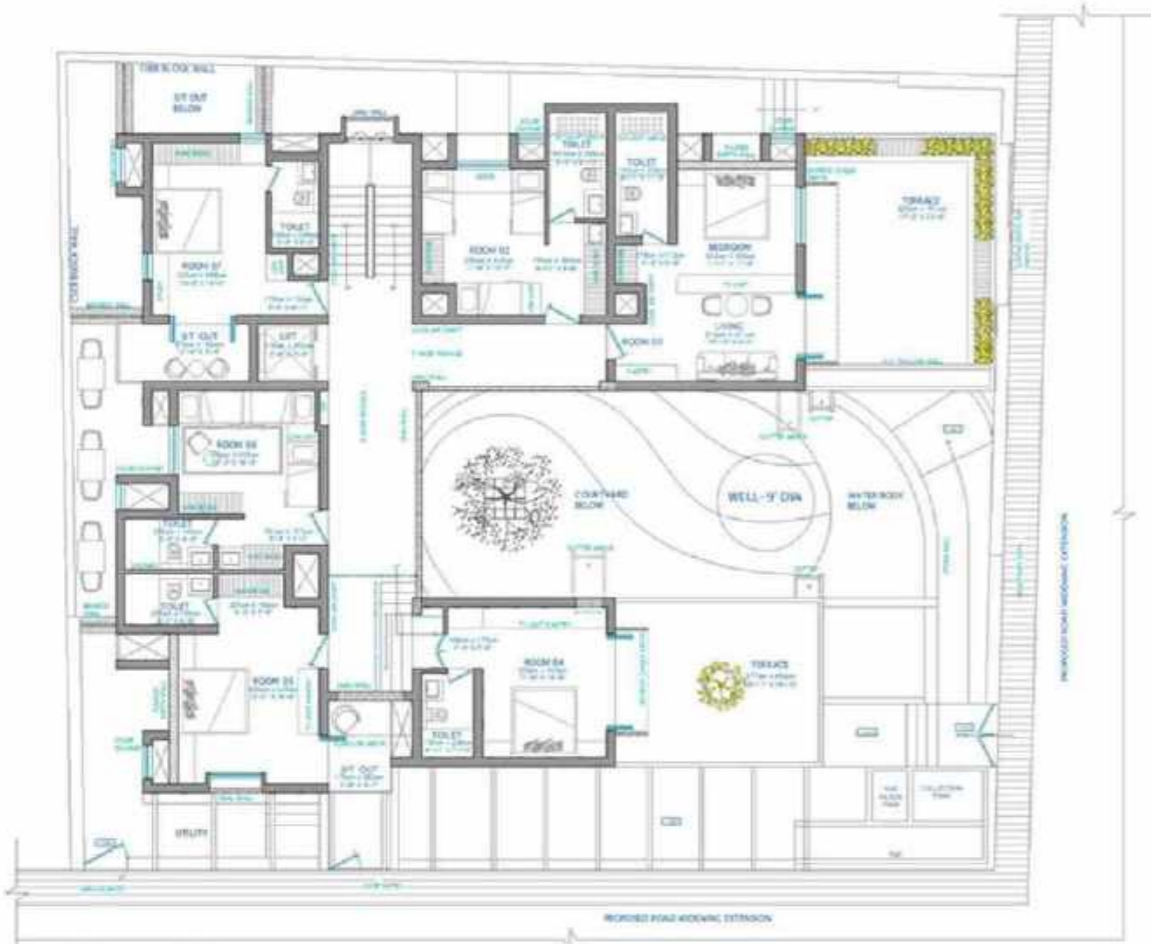
## EARTH AIR TUNNEL



Earth- air tunnels may be considered as special types of wind towers connected to an underground tunnel. The cooling process is based on the fact that the temperature a few meters below the ground is almost constant throughout the year. A wind tower is connected to the underground tunnel, which runs from the bottom of the wind tower to the basement of the building. The wind tower catches the wind which is forced down the tower into the tunnel. The temperature of the tunnel, being lower than that of the ambient temperature, cools the air before it is circulated into the living space. In winter, the temperature of the air tunnel is higher than the ambient temperature and hence warms the air passing through it.



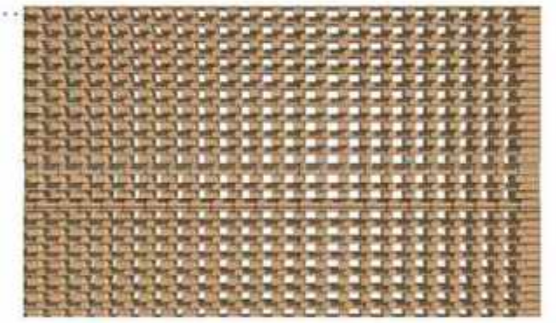
Jaali walls have been used for the elevation which help cut down heat while allowing natural lighting and ventilation. They have been used as a feature along the passage, room exterior walls and the parapet walls.



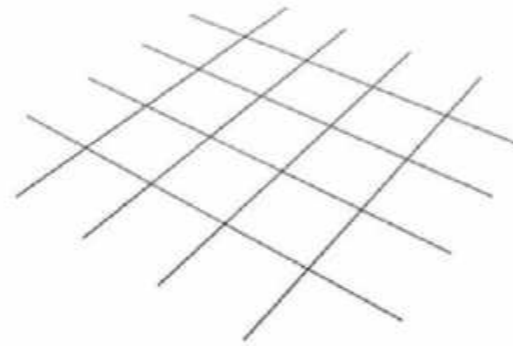
FIRST FLOOR PLAN



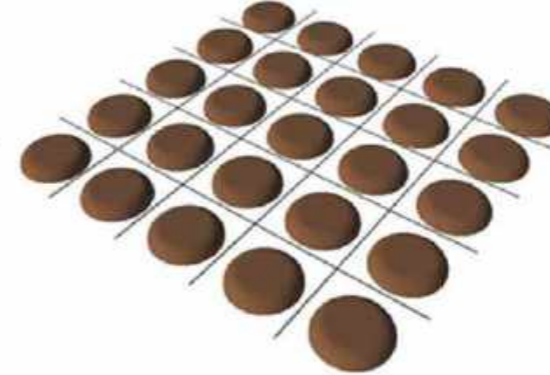
SECOND FLOOR PLAN



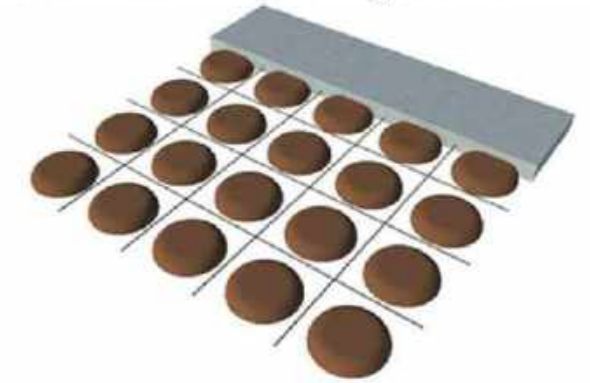
Filer slabs have been used for the ceilings in the room as well as the corridors which reduce the usage of concrete.



REINFORCEMENT GRID



CLAY POT FILLER



CONCRETE CASTING OF SLAB



SECTIONAL VIEW



SECTION



SECTIONAL VIEW



# TWO BEDROOM APARTMENT

The brief was to design an apartment for a family of 3 consisting of two bedrooms, a kitchen, dining with an attached balcony and a living room



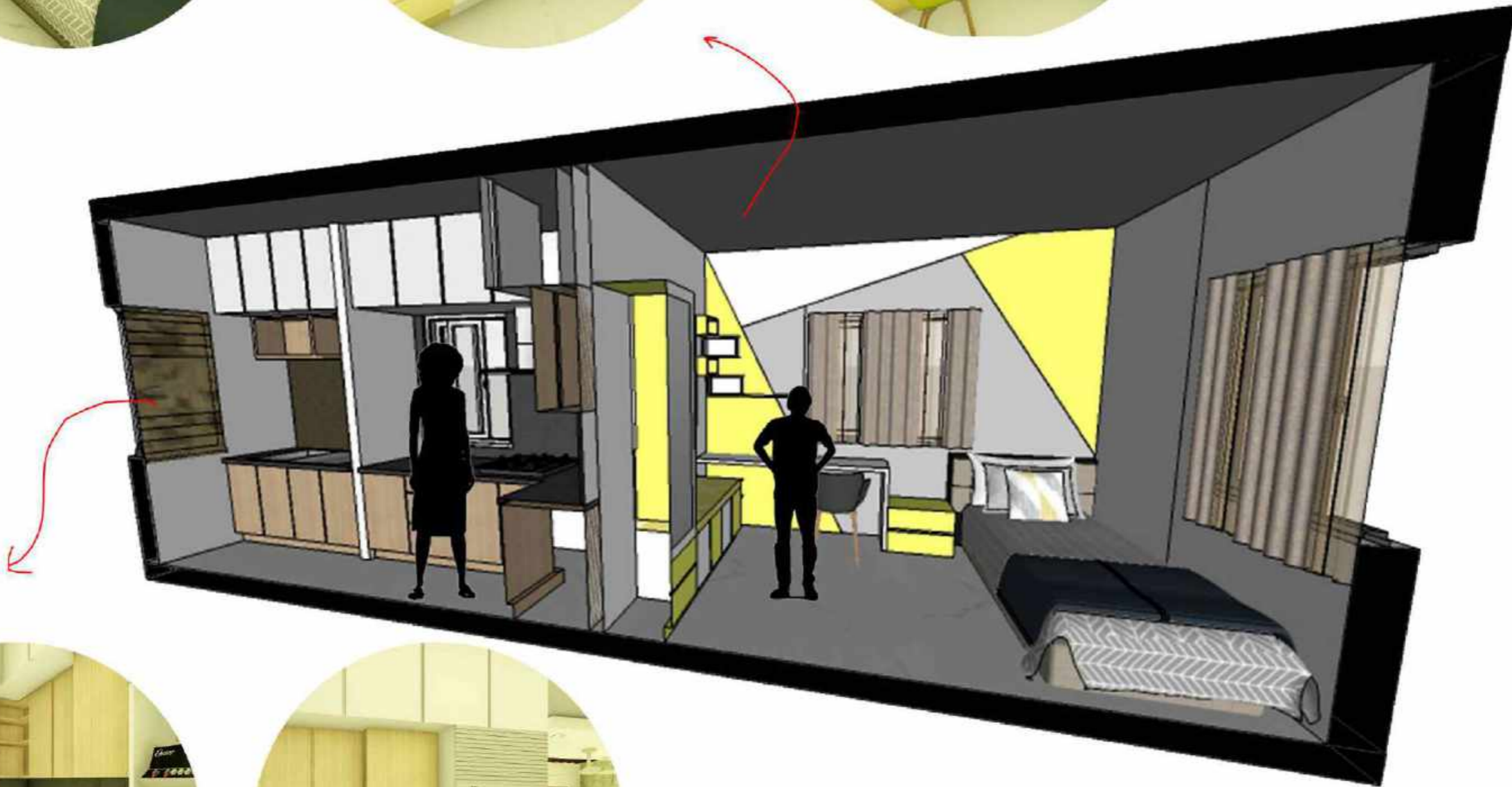
PLAN



Concrete texture paint on the opposite walls accentuate the living room. A wall panel has been provided behind the TV unit which continues as a false ceiling with wooden planks on one side on which the cove light throws light and highlights the wooden texture of the planks. A dark grey sofa with bright coloured pillows will make it stand out, and similar colour double layered curtains have been used.



SECTION THROUGH LIVING ROOM AND MASTER BEDROOM



VIEWS OF THE KITCHEN AND THE CHILDREN'S BEDROOM WHERE SUBTLE COLOURS HAVE BEEN USED



# BEACH RESORT

## OPENING DOORS TO TOURISM

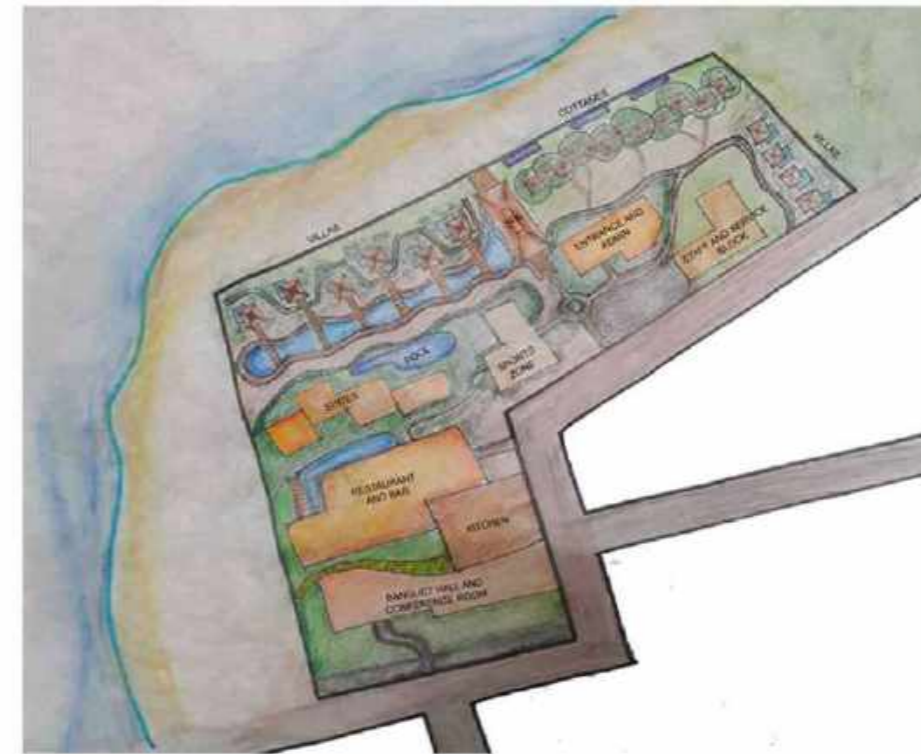
### SINDHUDURG, MAHARASTRA

**AIM** - The aim of the project was to provide a place of stay for the tourists in Sindhudurg, Maharashtra, an off beat place which has a great potential to become a tourist destination with its clean and unexplored beaches.

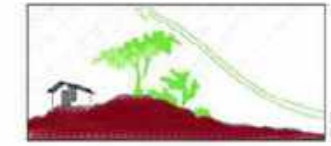
Provision of a resort in this area helps in attracting more tourists to this place, which further adds to the economical development of the region. The place becomes more valuable and is appropriate for a resort as it has a view of an estuary which will make the stay of the visitors more memorable.

**CONCEPT** - The resort integrates natural vegetation with the built environment which ensures the retention of the natural environment and not causing much harm to its surroundings. The concept behind the planning was to bring in a sense of openness even inside the buildings.

### DESIGN PROCESS AND CONCEPT DEVELOPMENT



Uses of planting trees along coastal regions



Protection from wind and rain

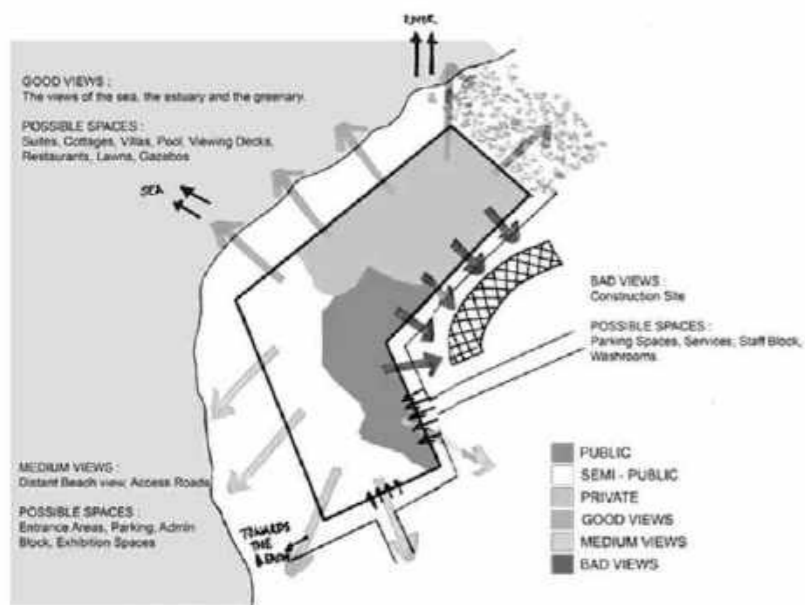


Protection from sun and glare

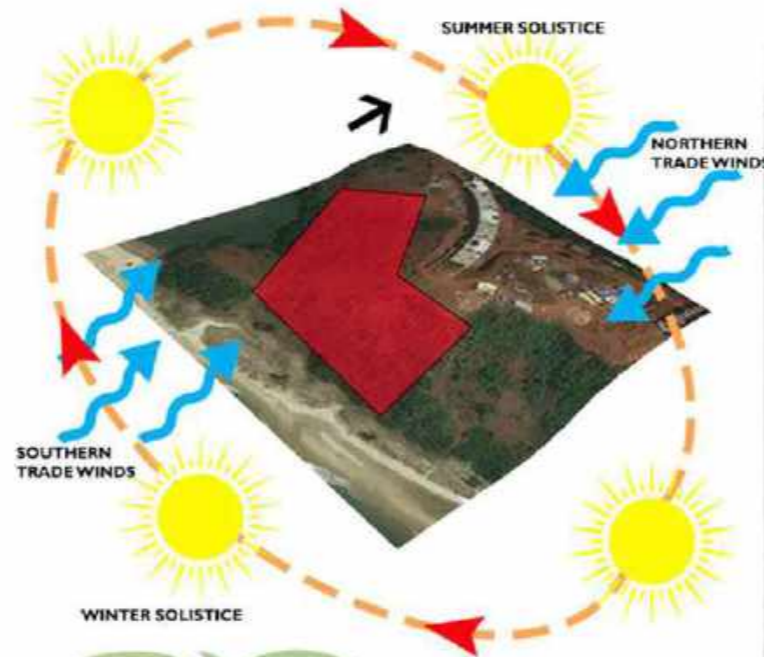


Protection from noise, air pollution and ugly views

### SITE ZONING



### SITE ANALYSIS



### MASTER PLAN

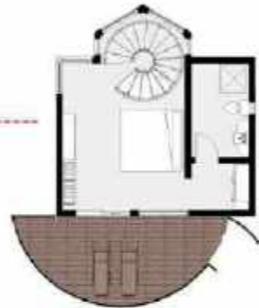


# ACCOMODATION TYPE - COTTAGES

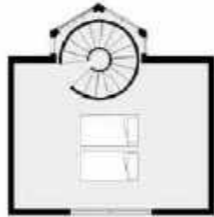
The cottage accomodation was designed for a small family with one bedrom and a small seating on the first floor with a view towards the beach, This is a type of accomodation that allows the vacationers to sit back and relax and enjoy the view of the estauy from their decks. This was designed as a cluster of 5 cottages. A common pool was provided on the shared deck and a level below was the campfire area where the tourists could warm themselves up at night.



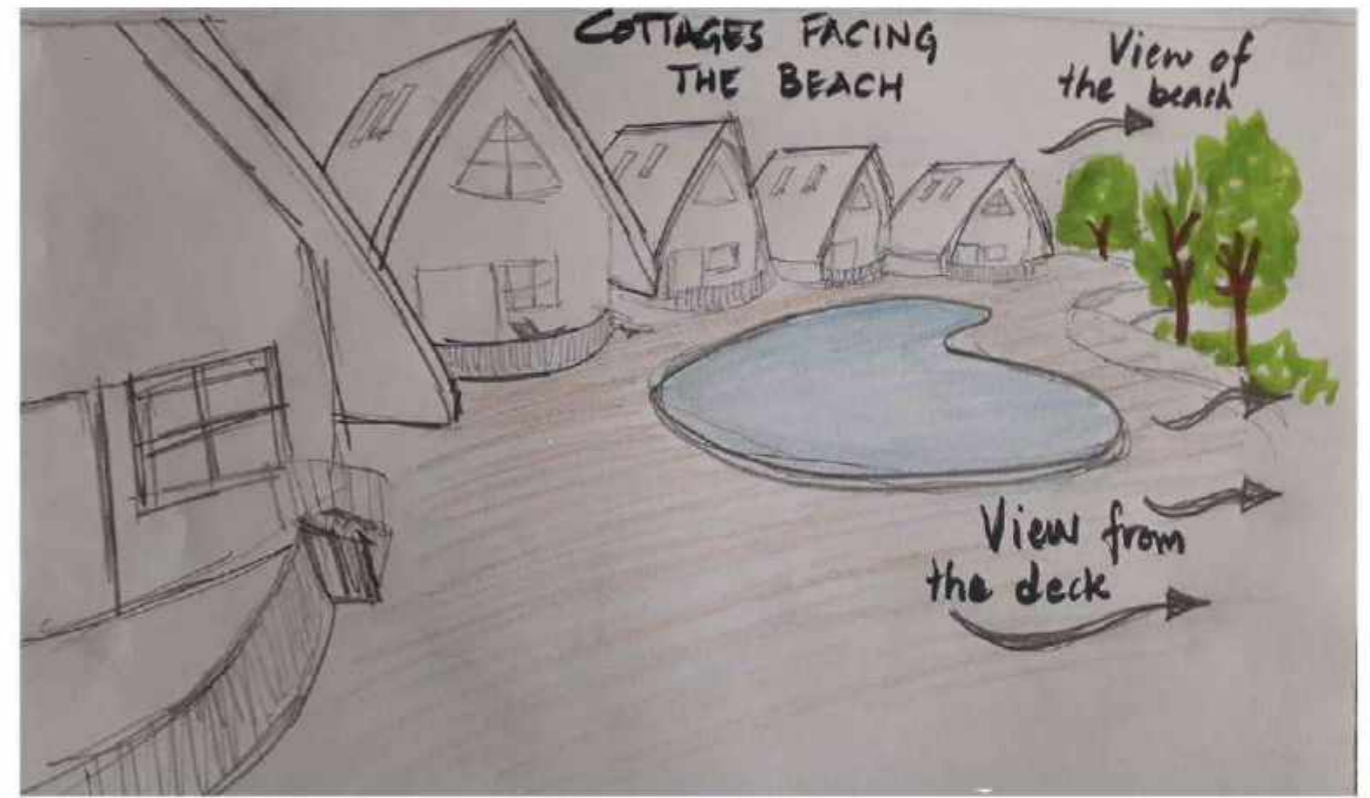
BLOCK FLOOR PLAN



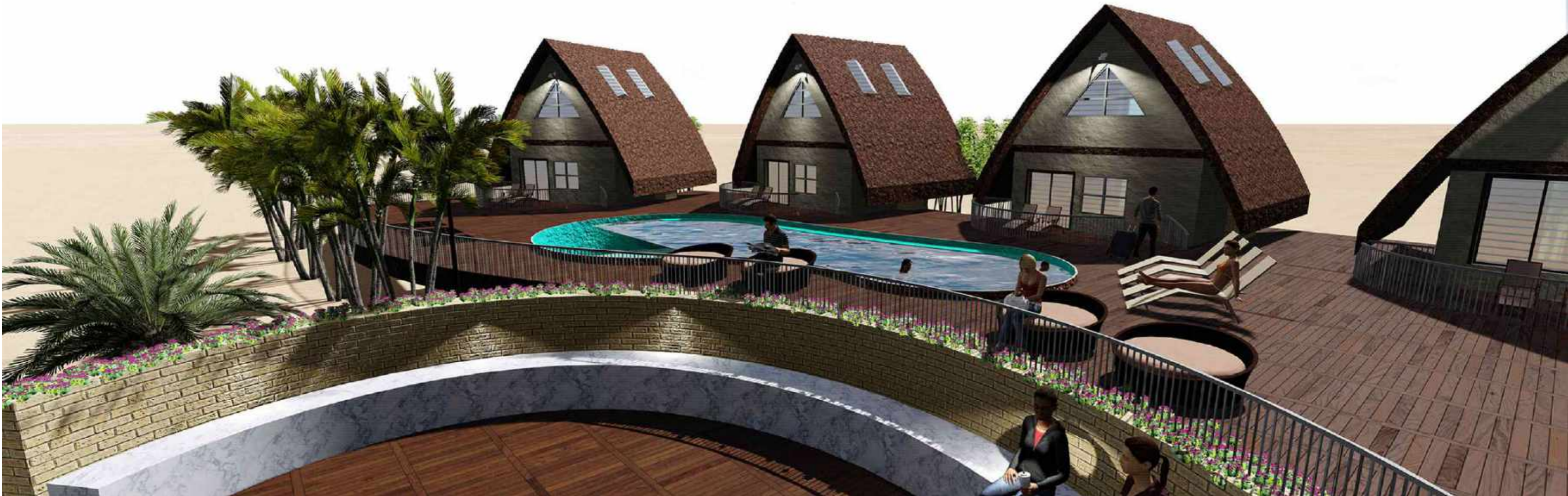
COTTAGE - GROUND FLOOR



COTTAGE - FIRST FLOOR



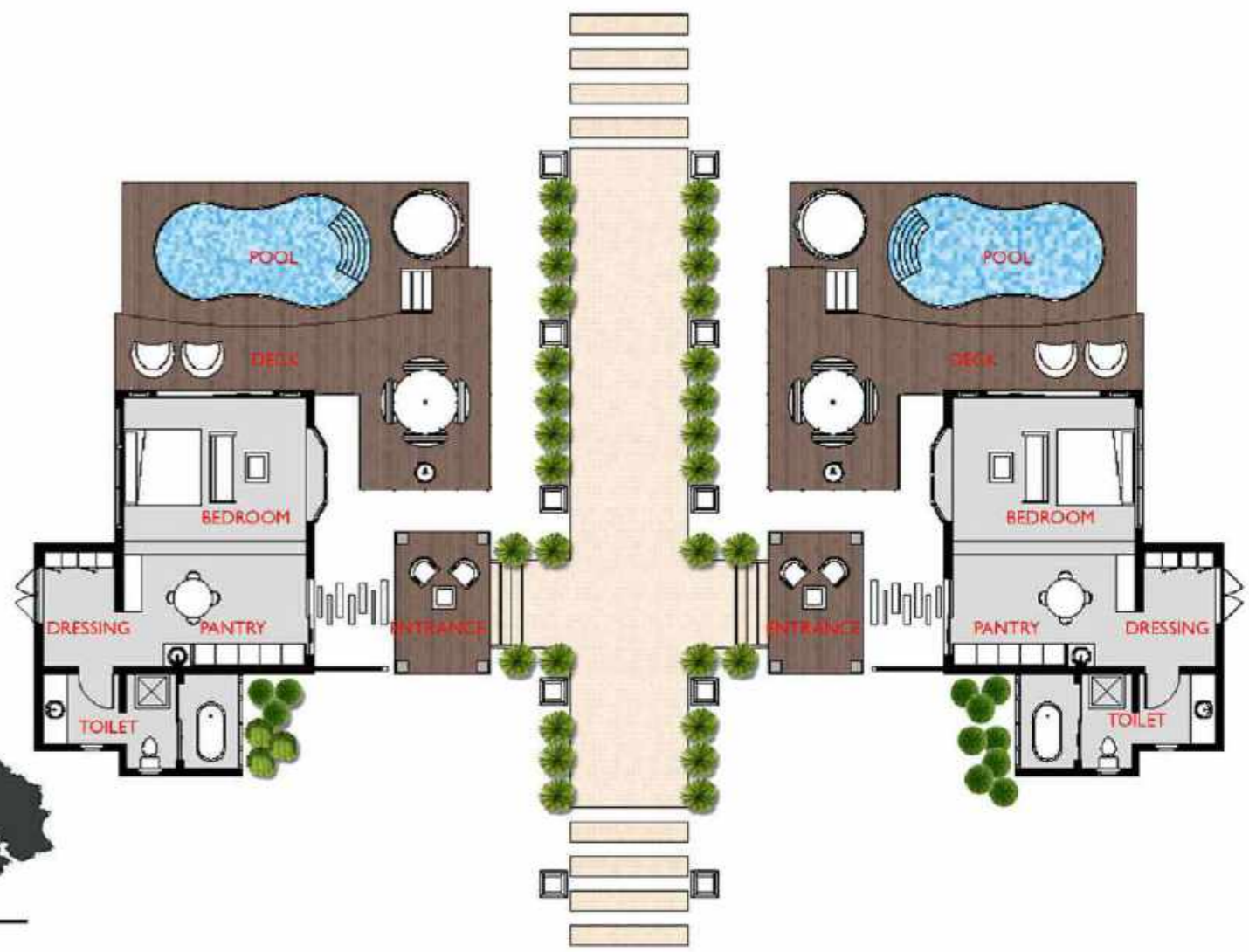
SOUTH ELEVATION



# ACCOMODATION TYPE - VILLAS



SECTION THROUGH THE VILLA



MASTER PLAN OF THE TWIN UNITS



ELEVATION

These are a group of 8 villas, two villas each connected to each other with a walkway covered by a Pergola and a buffer zone of trees to maintain privacy. The villas have a direct access to the beach and a view of the sea.

## MATERIALS



**ROOFS** - Slate boasts a long lifespan and low-maintenance requirements, and is virtually fireproof. However, this type of roofing can be quite expensive.



**DECKS**- Redwood or Cedar  
Prized for their rich color and natural beauty,. Both species contain oils that make them naturally resistant to rot, decay and voracious insects.



# URBAN DESIGN SERENITY IN CHAOS CHAMARAJPETE, BANGALORE

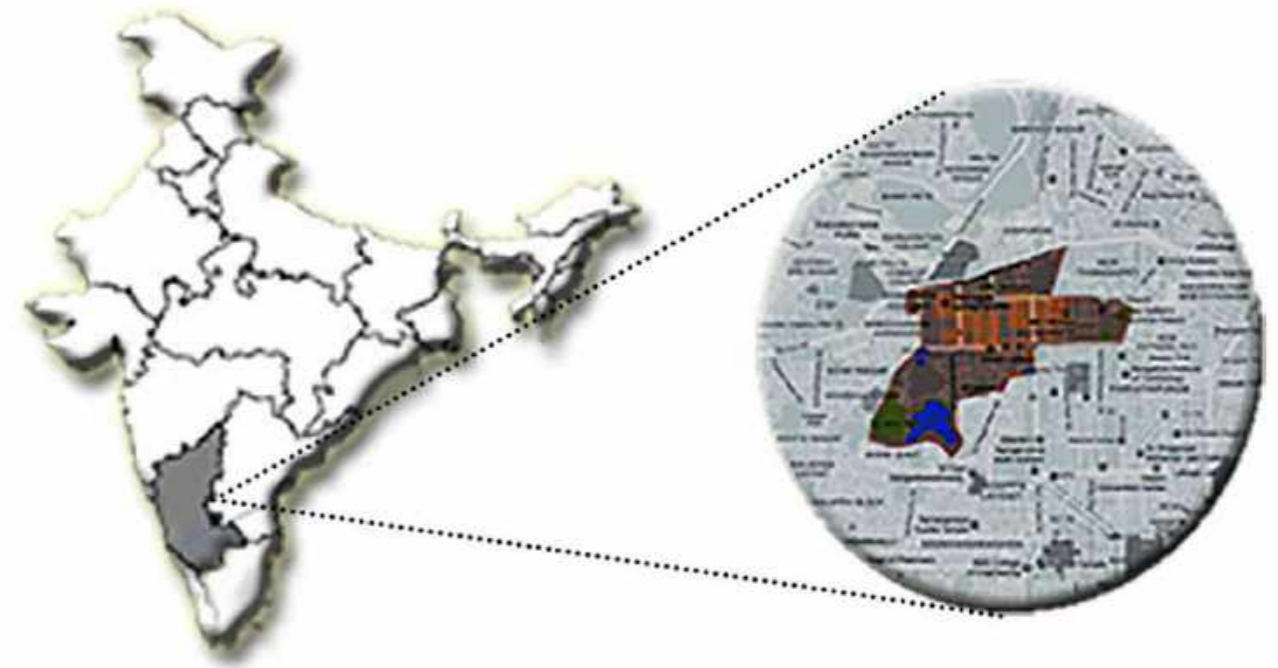
**AIM** - To study and propose design interventions in the oldest areas of Bangalore, Chamrajpete and its surroundings.

**CONCEPT** - Chamrajpet, being one of the oldest areas of Bangalore, has its own charm in the way it functions and in the way the surroundings are. Hence, design interventions were proposed keeping this in mind, and most of them tried to retain their original essence.

Chamrajpet being a chaotic and busy area, efforts were made to retain this chaos which defines the place and bring in a serene atmosphere in it by including more of open spaces and greenery around. Hence all the interventions were proposed keeping the theme "SERENITY IN CHAOS" in mind.



## LOCATION

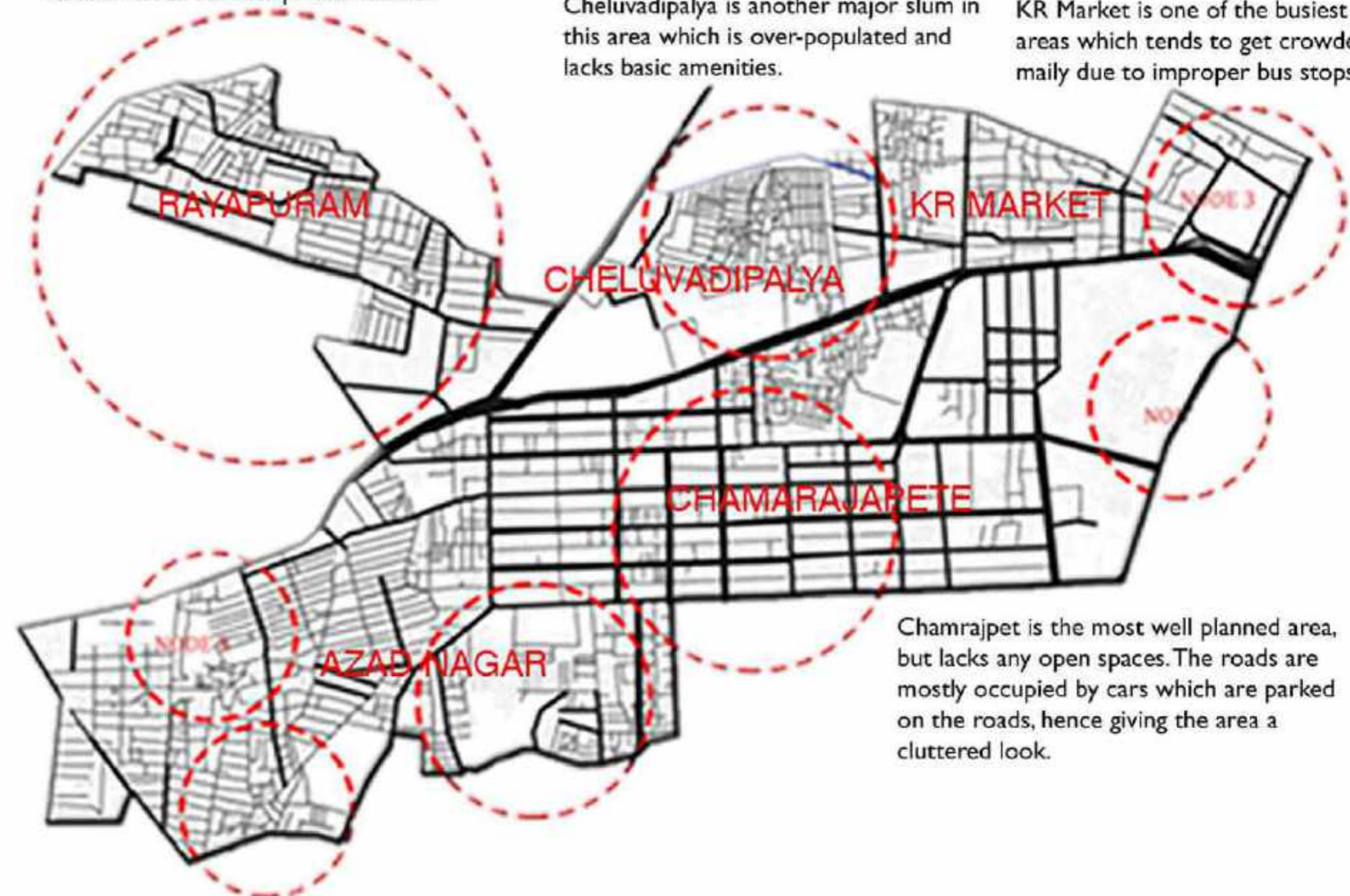


## IDENTIFYING THE NODES THAT REQUIRE ATTENTION

The Rayapuram node was selected mainly due to the congested roads and less of breathing spaces. This node mostly consists of slums with densely packed houses which have no private toilets.

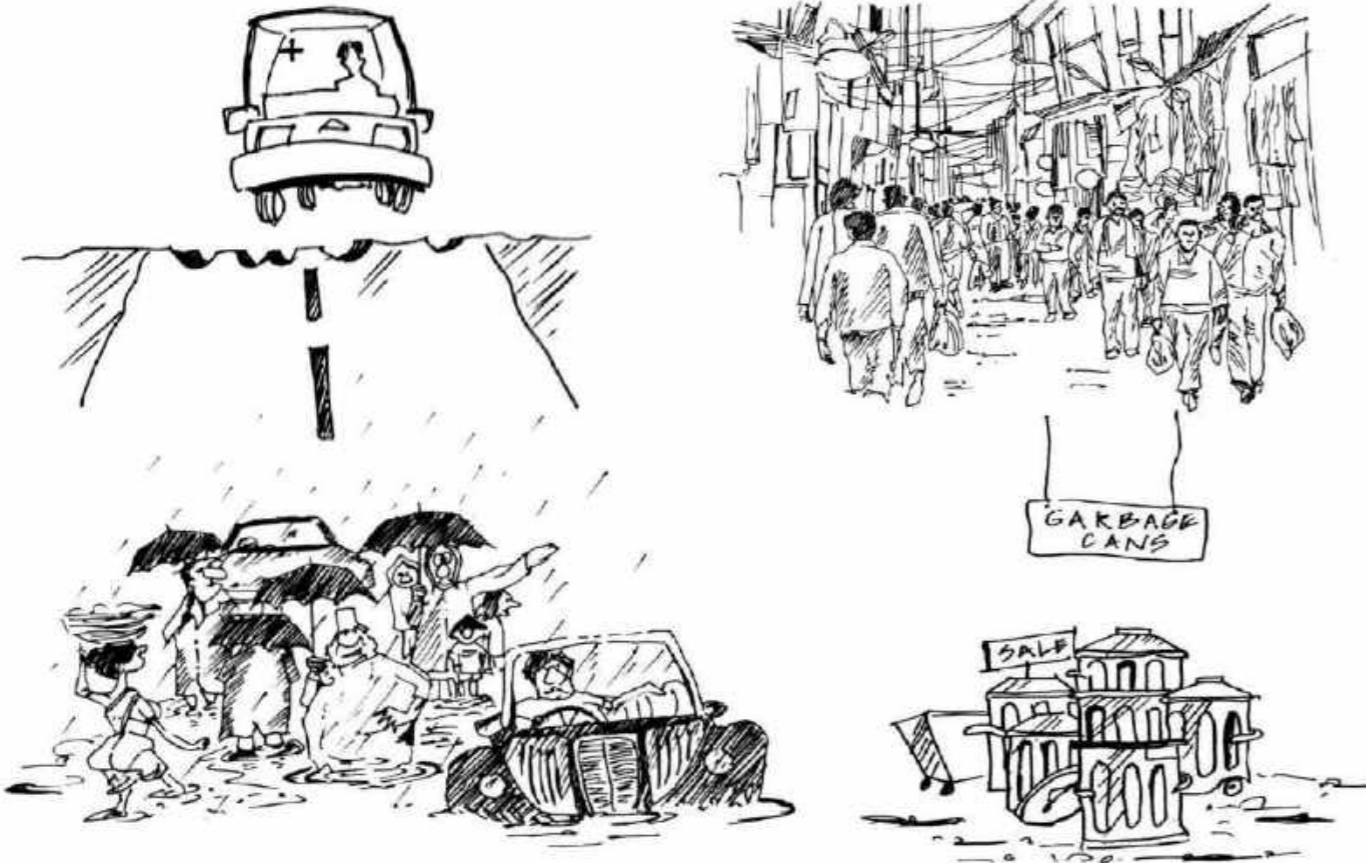
Cheluvadipalya is another major slum in this area which is over-populated and lacks basic amenities.

KR Market is one of the busiest areas which tends to get crowded daily due to improper bus stops.



Chamrajpete is the most well planned area, but lacks any open spaces. The roads are mostly occupied by cars which are parked on the roads, hence giving the area a cluttered look.

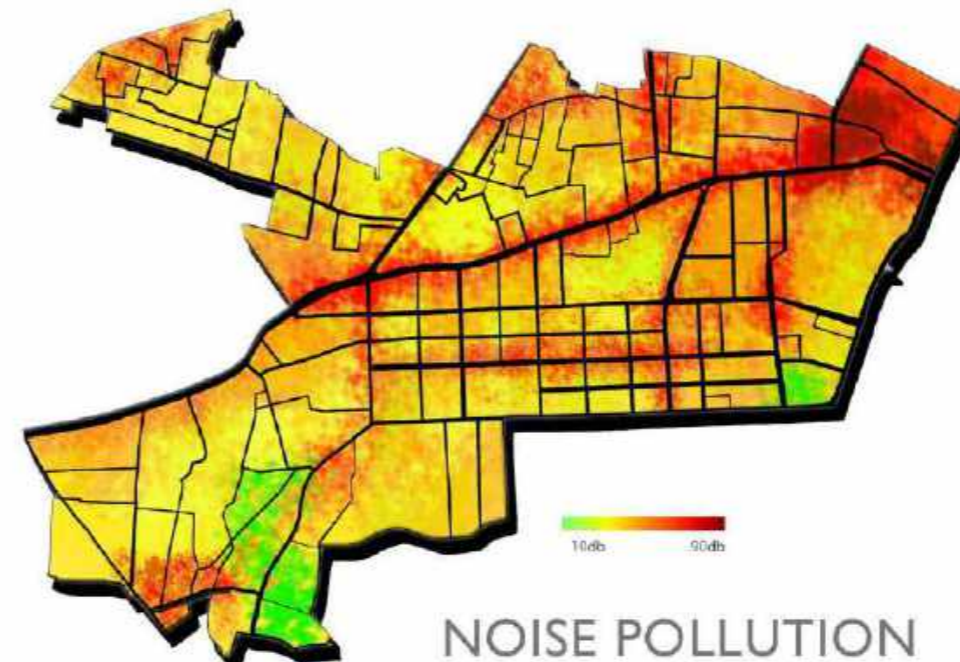
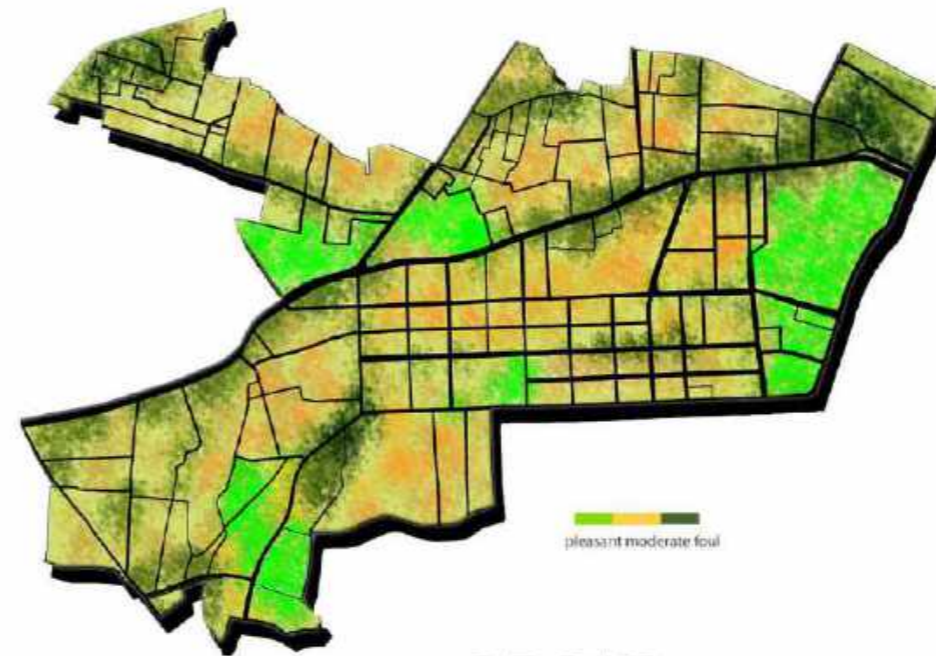
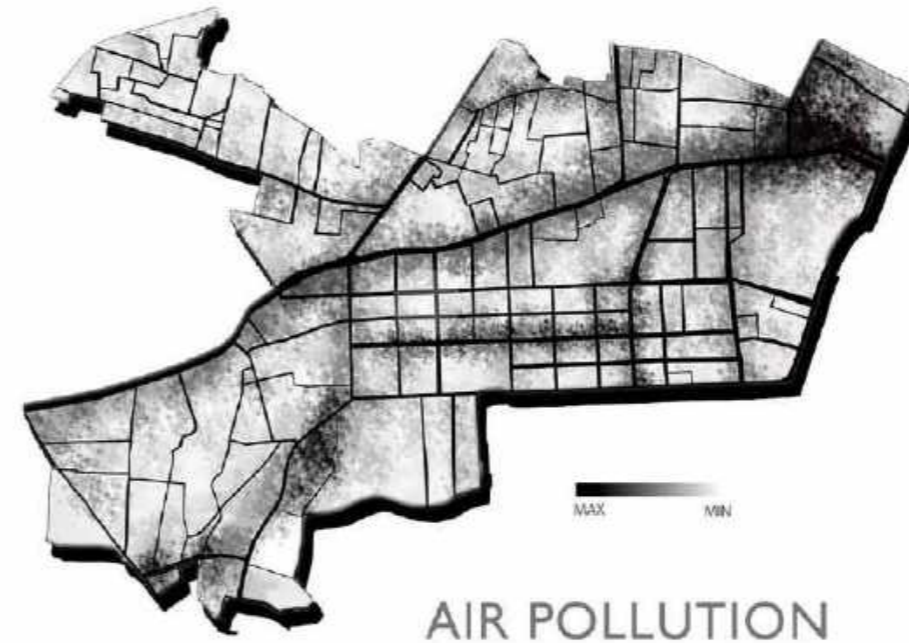
## THE COMMON PROBLEMS IN THE AREA



The most common problems faced by people in the area were found to be overcrowding, congestion of spaces, unhealthy manner of disposal of garbage, bad condition of the roads, and clogging of water during heavy rains in the low lying areas. Design interventions were proposed keeping these factors in mind and also ensuring the provision of breathing spaces which would make the place serene.



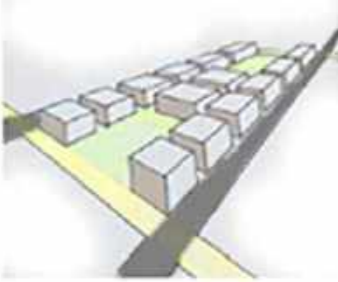
## SENSORY MAPPING



## PICTORIAL DOCUMENTATION



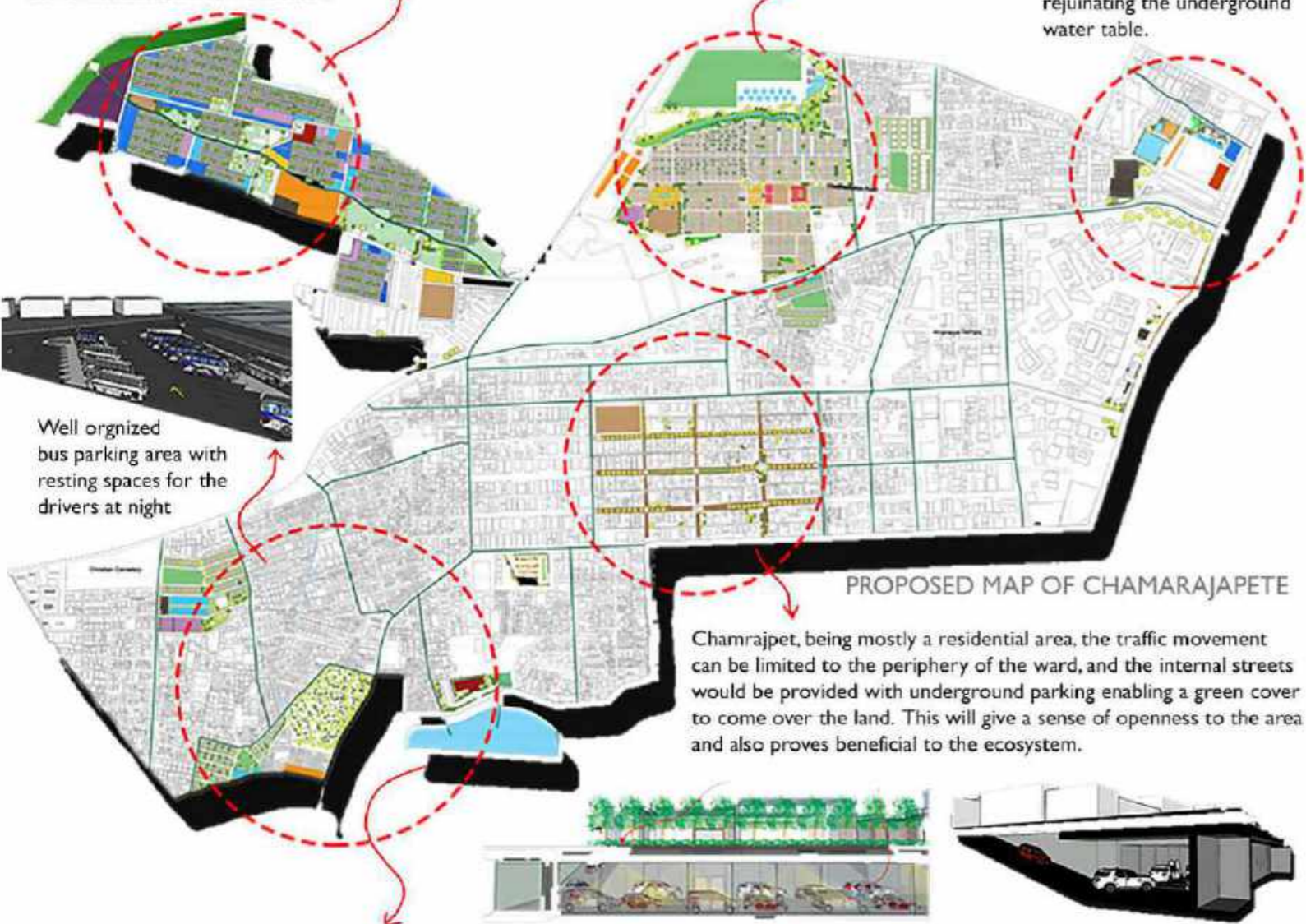
# DESIGN INTERVENTIONS



PLAY GROUND AND PARK PROPOSED RESIDENTIAL

The most cluttered area Rayapuram was entirely redesigned keeping in mind the efficient use of every space. Proper spaces for a school, public facilities and designated space for the street vendors were allocated.

The slum areas which are very crowded can be given some breathing spaces with the provision of street side rain gardens which help not only in the beautification of the place but also in rejuvenating the underground water table.



Well organized bus parking area with resting spaces for the drivers at night

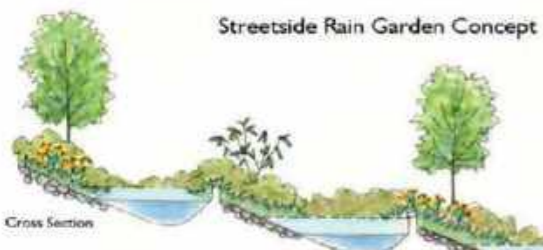
PROPOSED MAP OF CHAMARAJAPETE

Chamrajpet, being mostly a residential area, the traffic movement can be limited to the periphery of the ward, and the internal streets would be provided with underground parking enabling a green cover to come over the land. This will give a sense of openness to the area and also proves beneficial to the ecosystem.

“Design is not just what it looks like and feels like. Design is how it works.”

- Steve Jobs

Rain gardens can be planted throughout the area which will help in rejuvenating the lake present in the area, thus making it an area for a potential development of a waterfront plaza that can act as a public gathering space.



Streetside Rain Garden Concept

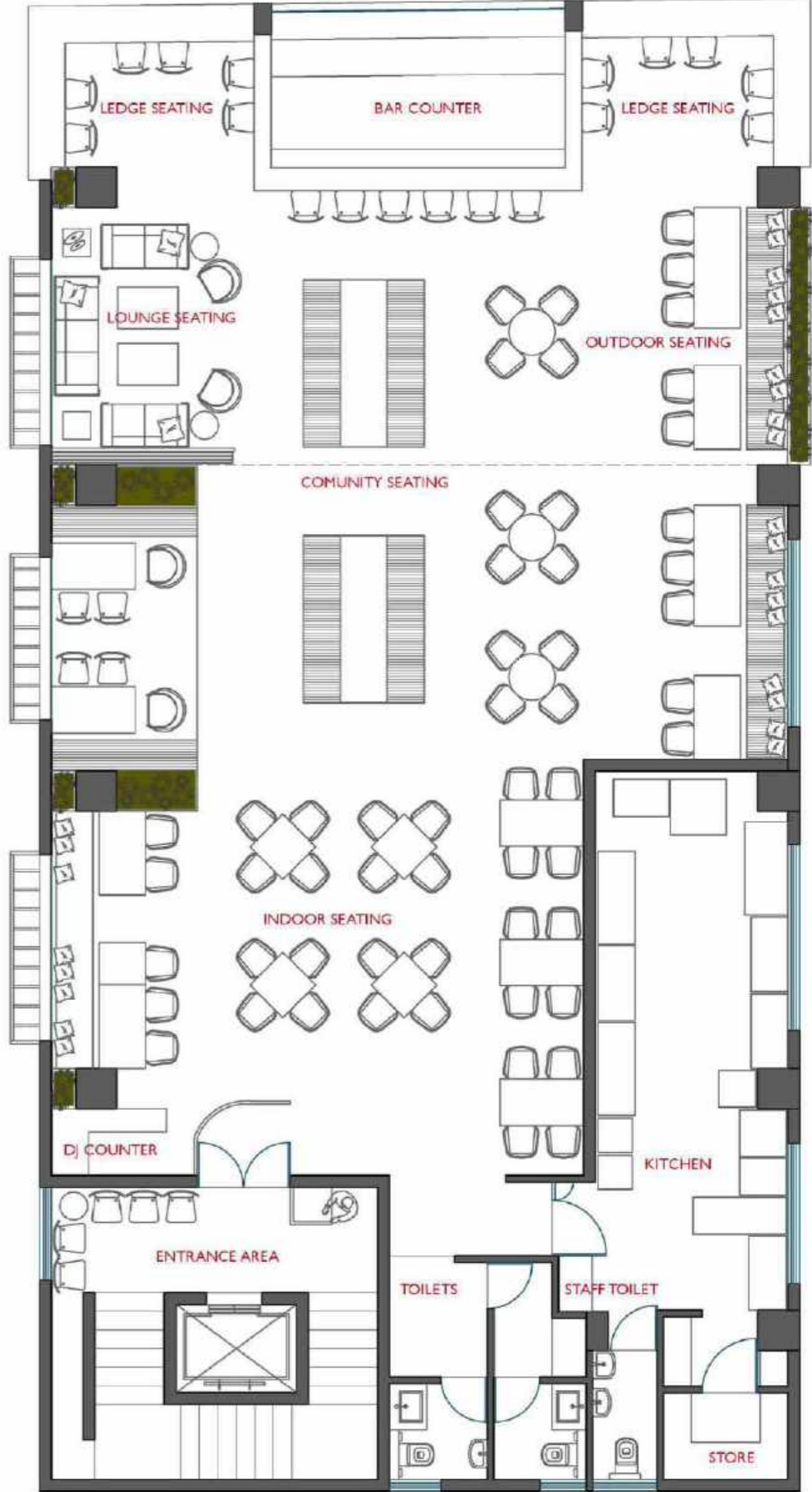
The water collected from all around the site is channelised towards the Kempambudhi Lake and this in turn helps in the rejuvenation of the lake which is presently in a bad state. The water from this lake can serve as a source for watering the nearby gardens and parks.



PROPOSED WATER FRONT COMMUNITY CENTRE/PLAZA

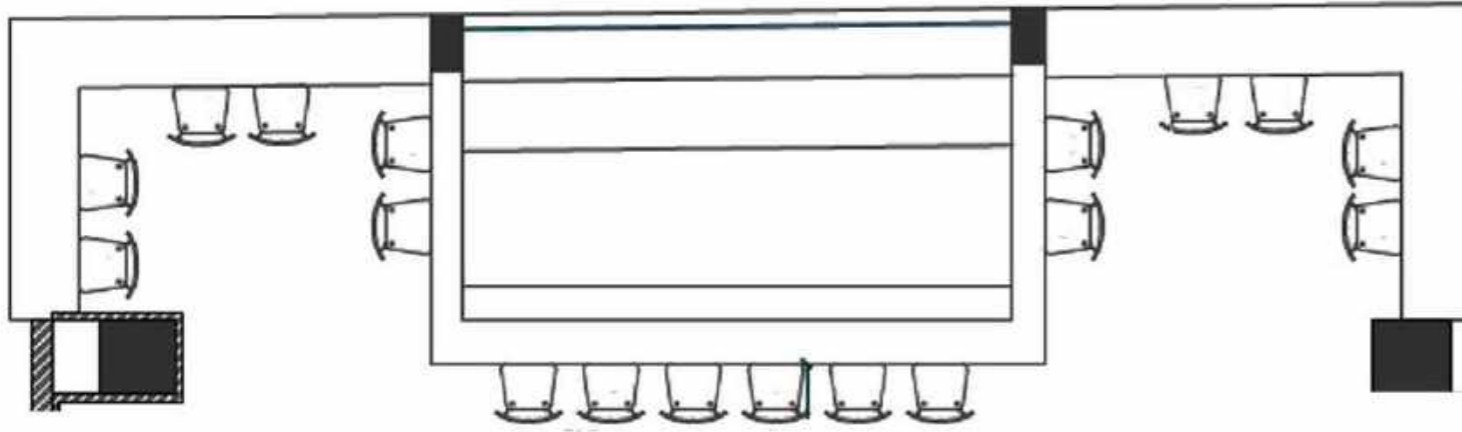
# PUB DESIGN

**AIM** - The design problem given was to design a pub in a happening locality in Bangalore. As per the brief, the pub consisted of two spaces separated by a sliding door, indoor seating and outdoor seating. The flooring was done using Kota Stone Tiles which gives a natural rough finish. The feature wall near the entrance and the bar counter used hollow concrete blocks and the use of brick walls near the seating spaces was also incorporated. Suitable furnitures and lighting fixtures were also customised and designed according to the needs of the client.

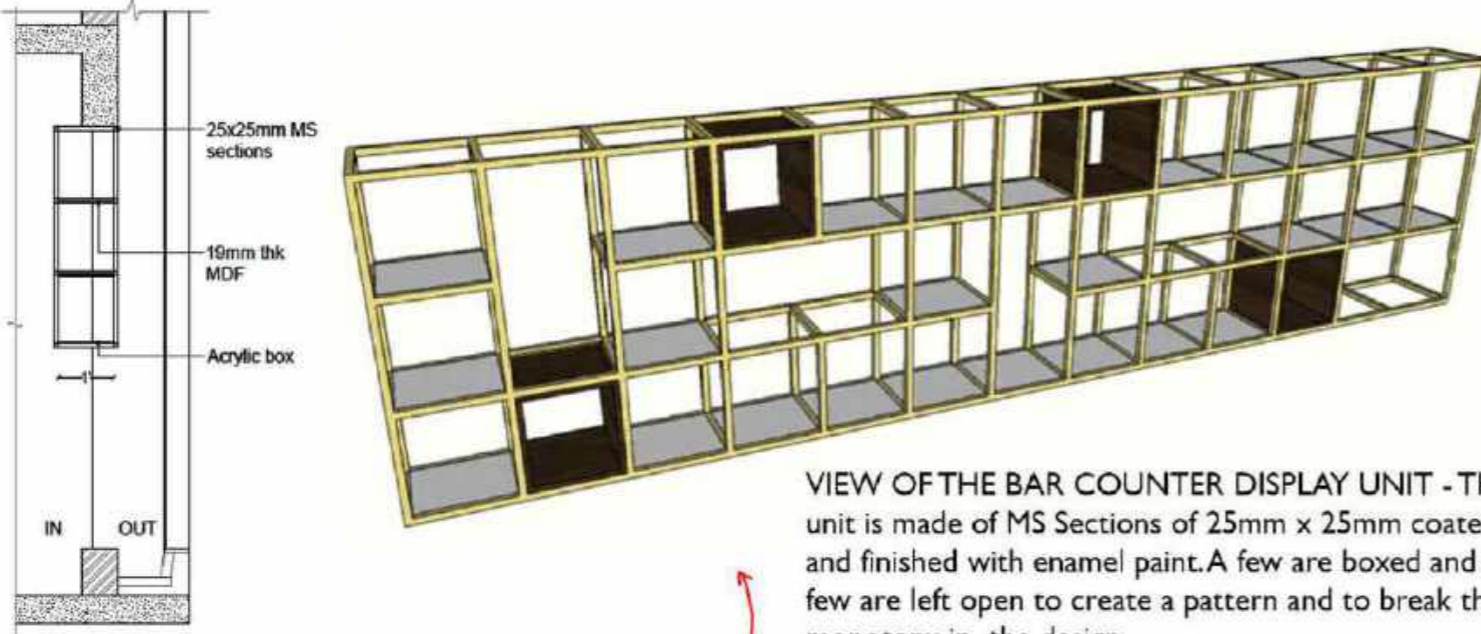


MASTER PLAN

# BAR COUNTER AND LEDGE



PLAN SHOWING THE BAR COUNTER AND THE LEDGE SEATING FACING TOWARDS THE OUTSIDE OF THE PUB - The design was done keeping the ambience in mind, since it was for a pub, funky lights and attractive display units were designed along with var stools that blended in with the rest of the elements.



VIEW OF THE BAR COUNTER DISPLAY UNIT - The unit is made of MS Sections of 25mm x 25mm coated and finished with enamel paint. A few are boxed and a few are left open to create a pattern and to break the monotony in the design.



BAR STOOL OPTIONS



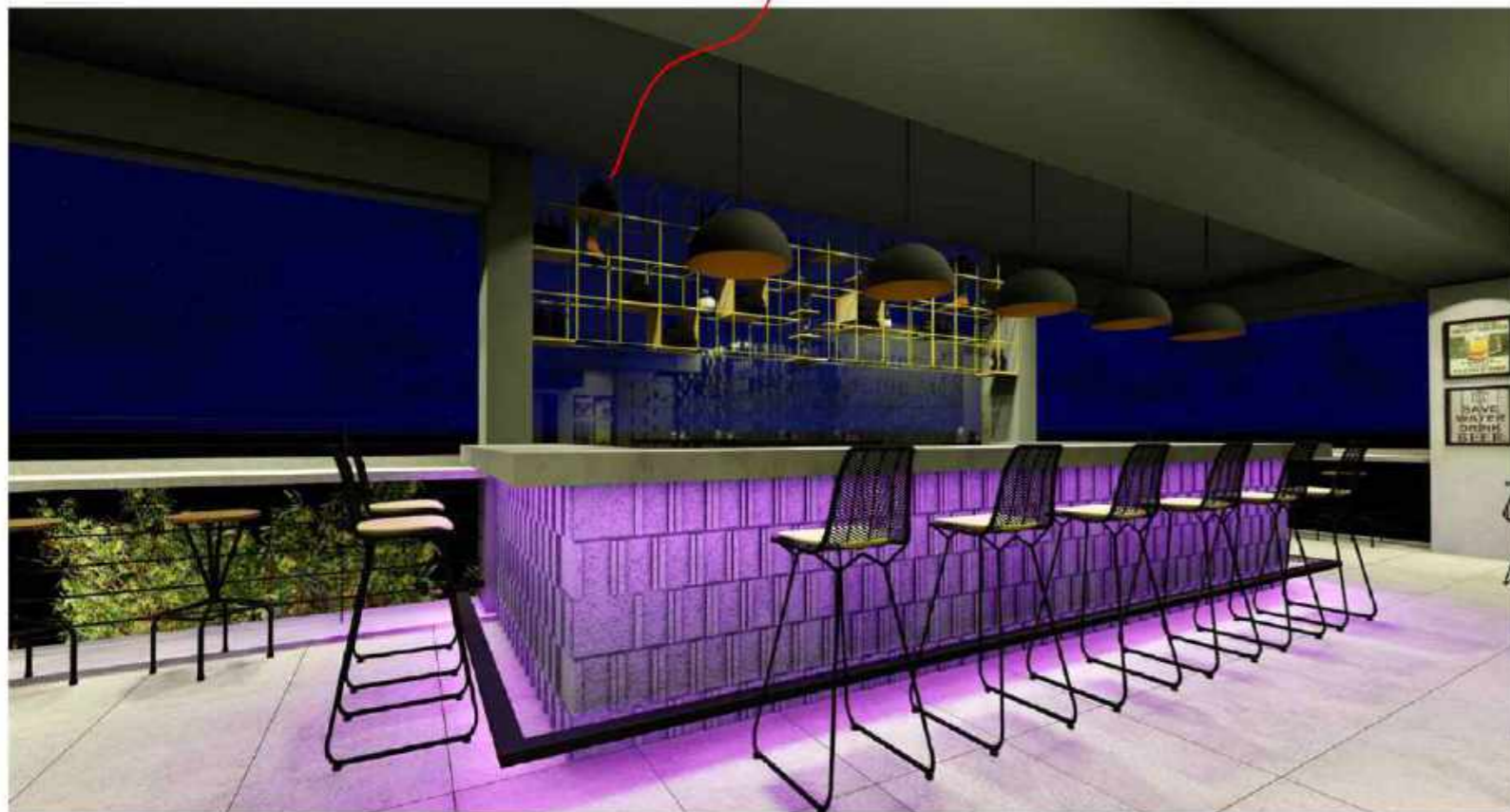
BAR LIGHTING OPTIONS



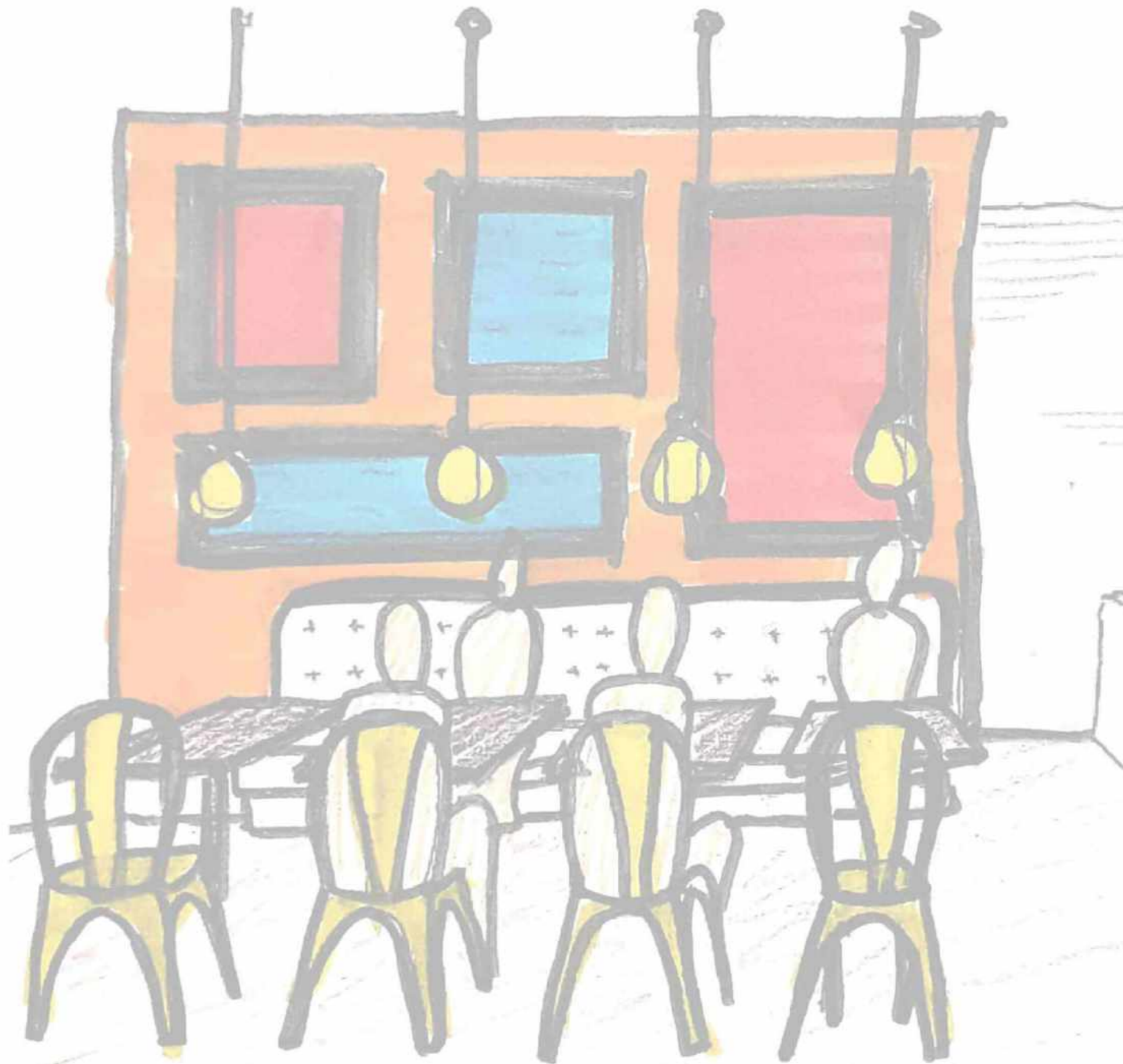
IMAGES SHOWING THE ON-GOING WORK OF THE BAR COUNTER AND THE MS DISPLAY UNIT



HOLLOW CONCRETE BLOCKS HAVE BEEN USED FOR THE BAR COUNTER TO GIVE IT A RUGGED LOOK







“Furniture should always be comfortable. And always have a piece of art that you made somewhere in the home.”

- Tamara Taylor

# CONTAINER CAFE

A new trend that has developed recently is the reuse of shipping containers once their usage life has expired. This practice has been referred to as "container architecture or cargotecture." Reused shipping containers have been turned into houses, hotels, storage units, stores, restaurants, food trucks, green houses, schools, libraries, and even art studios, by basically modifying them, and putting them together. Shipping container architecture could be defined as that type of architecture that is generally characterized by the re-use of steel shipping containers as a structural element and Architectural envelope that can host a specific function or a human activity.

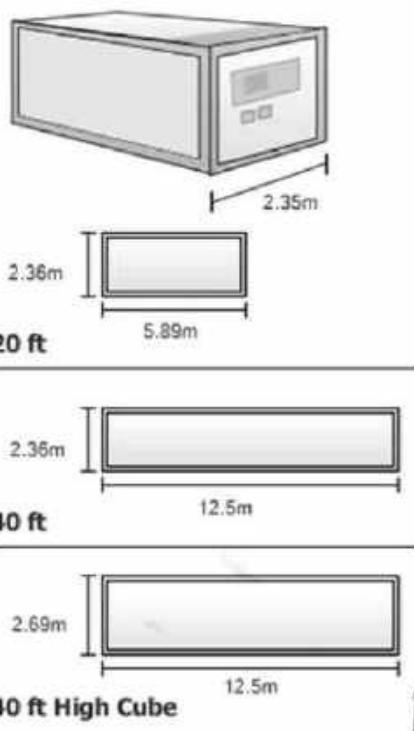
## ADVANTAGES

1. ENVIRONMENTAL FRIENDLINESS
2. TIME AND COST-EFFECTIVENESS
3. STRUCTURAL DURABLENESS
4. MAKESHIFT MASSING
5. PORTABLE

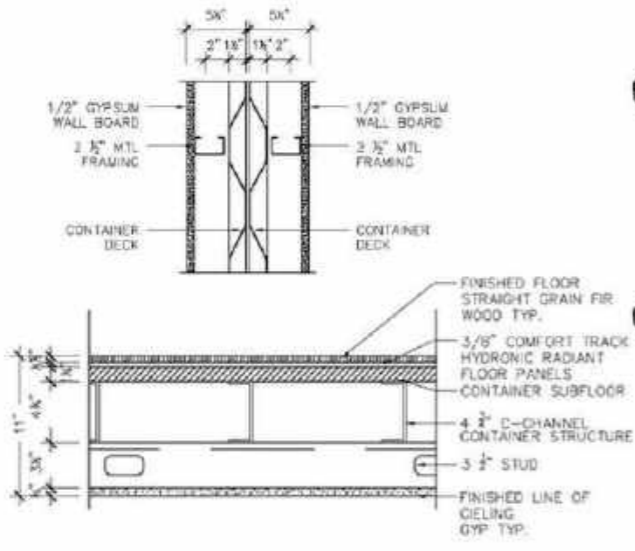
## REAL LIFE EXAMPLES



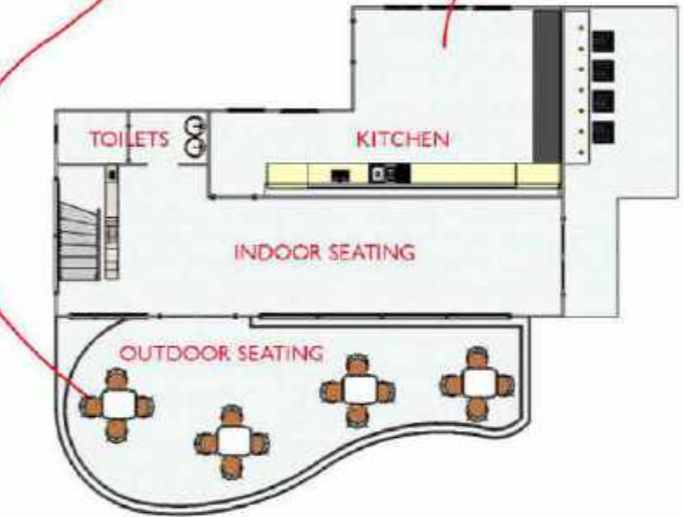
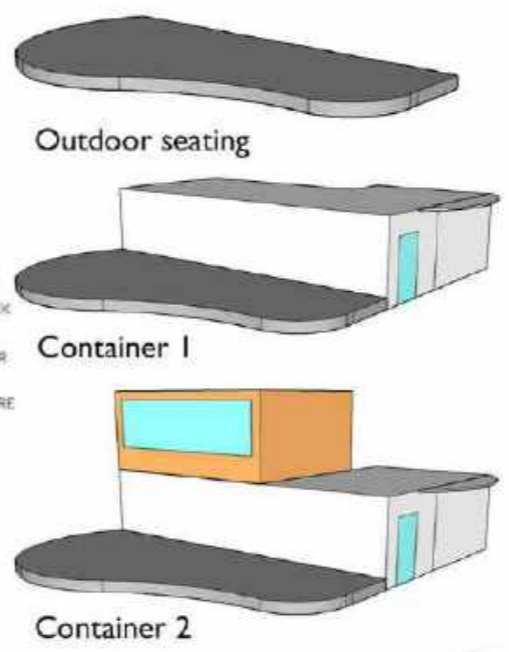
## SIZE USED:



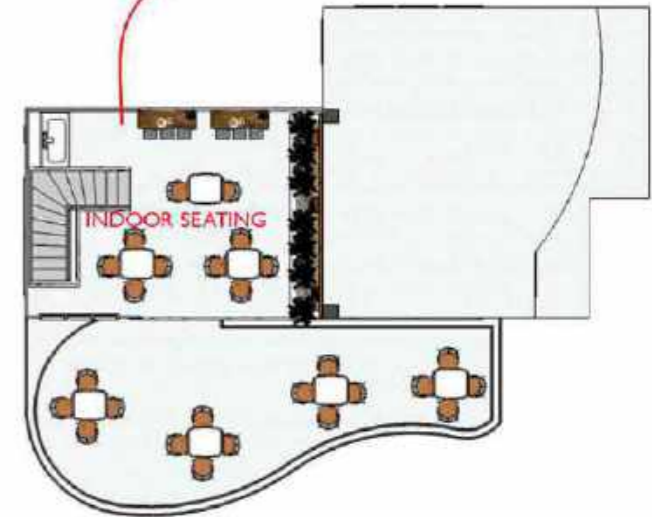
## TYPICAL WALL AND FLOORING DETAILS



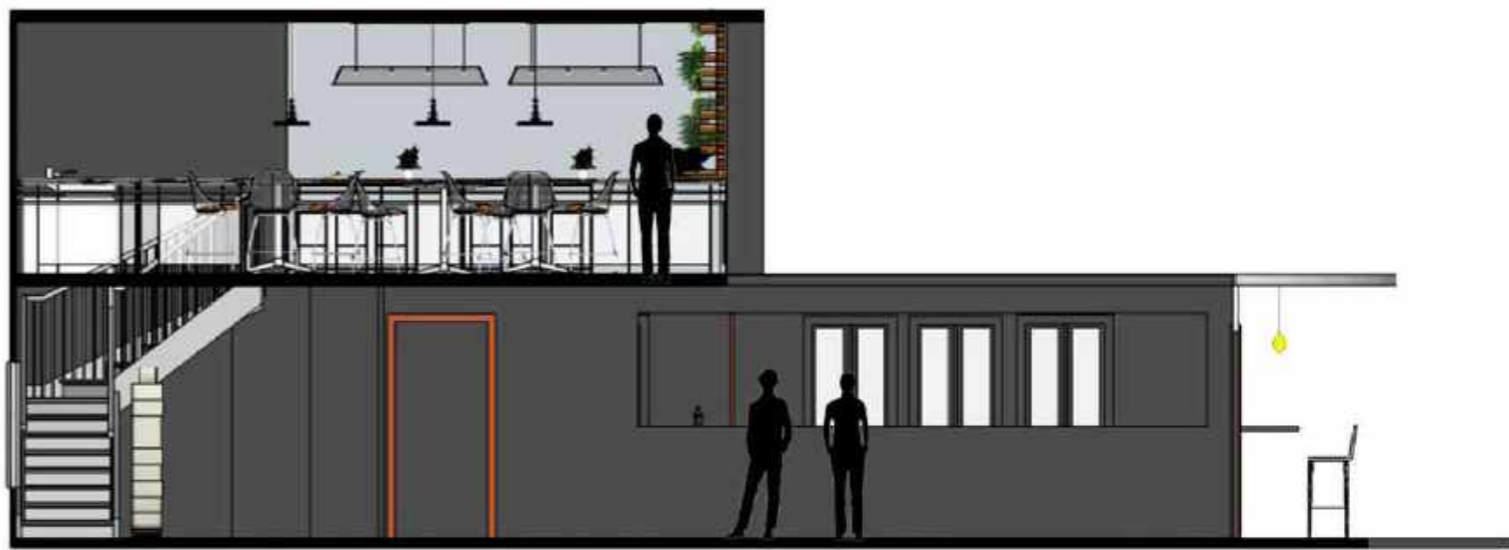
## DESIGN DEVELOPMENT



GROUND FLOOR PLAN



FIRST FLOOR PLAN



SECTION SHOWING TWO CONTAINERS CONNECTED TO EACH OTHER WITH STAIRS GIVING THE CAFE AN INDOOR SEATING AND A ROOFTOP SEATING





# RESTAURANT DESIGN - DINING WITH A VIEW



FRONT ELEVATION OF THE RESTAURANT

The restaurant was designed to be a two level building with seating area facing the beach to allow the guests a fine dining experience with a view. It even has a workshop space which can be used by the guests that helps in imparting the artistic culture of the local place

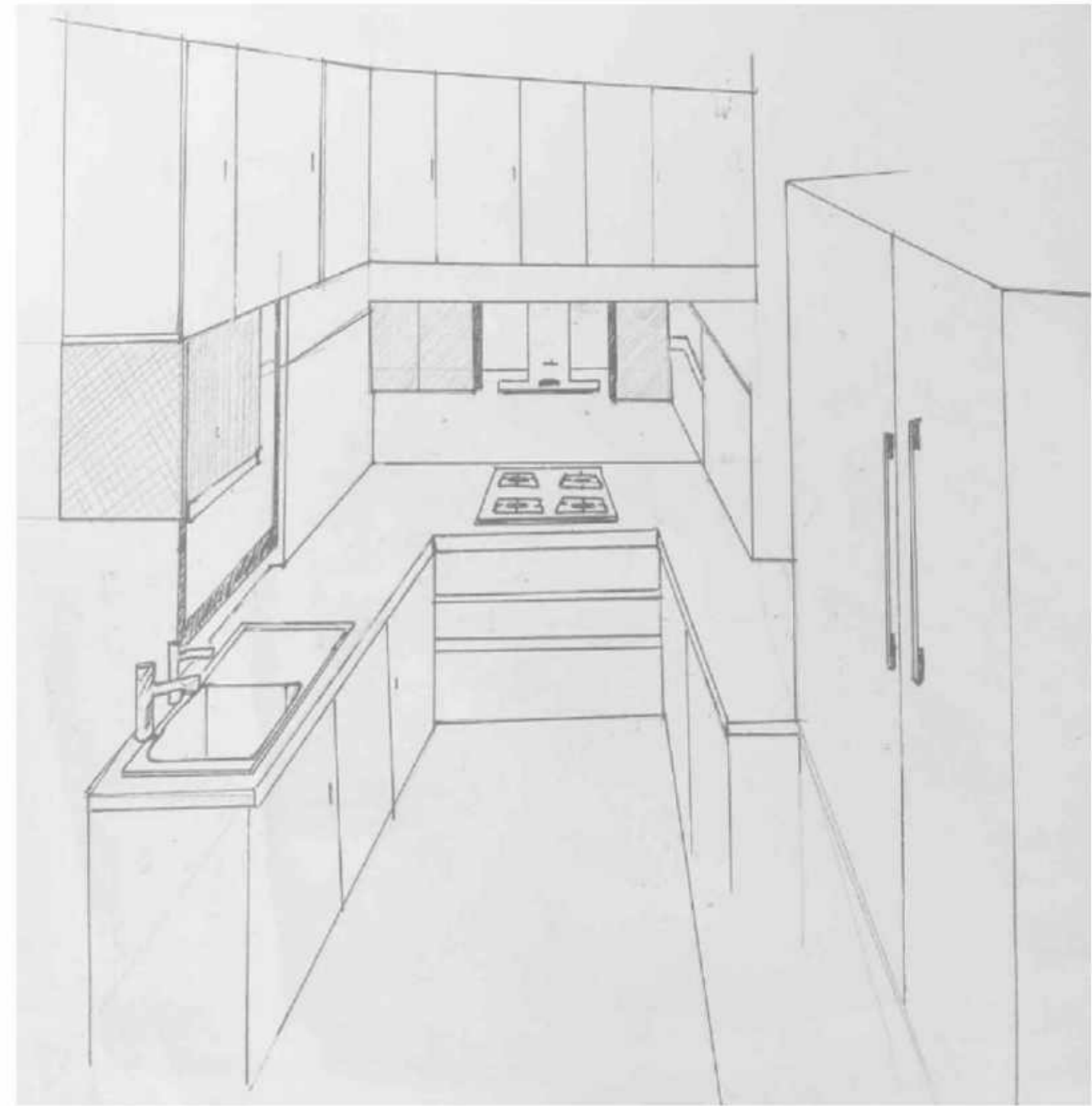
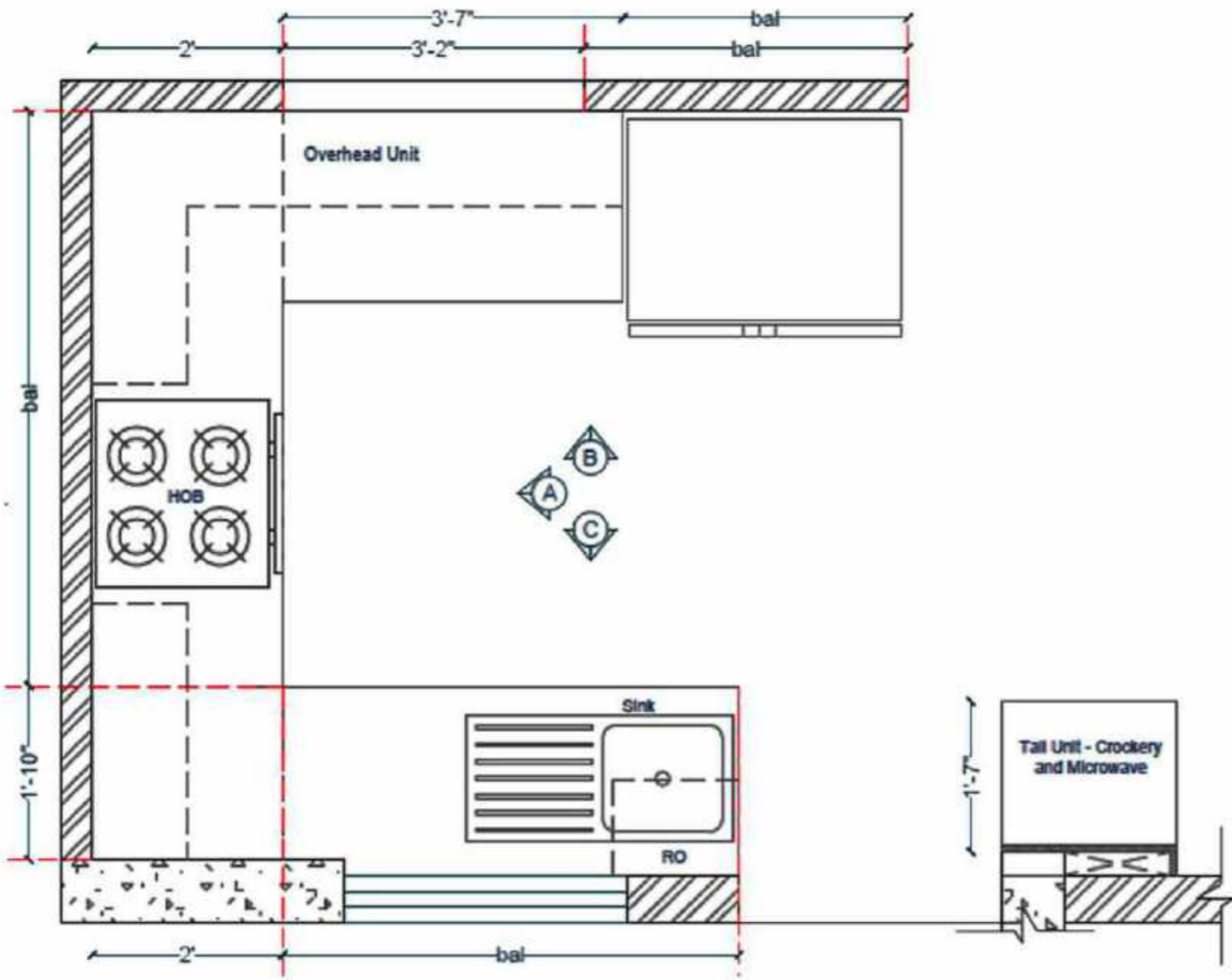


PLAN OF THE RESTAURANT



SECTION OF THE RESTAURANT

# KITCHEN DESIGN



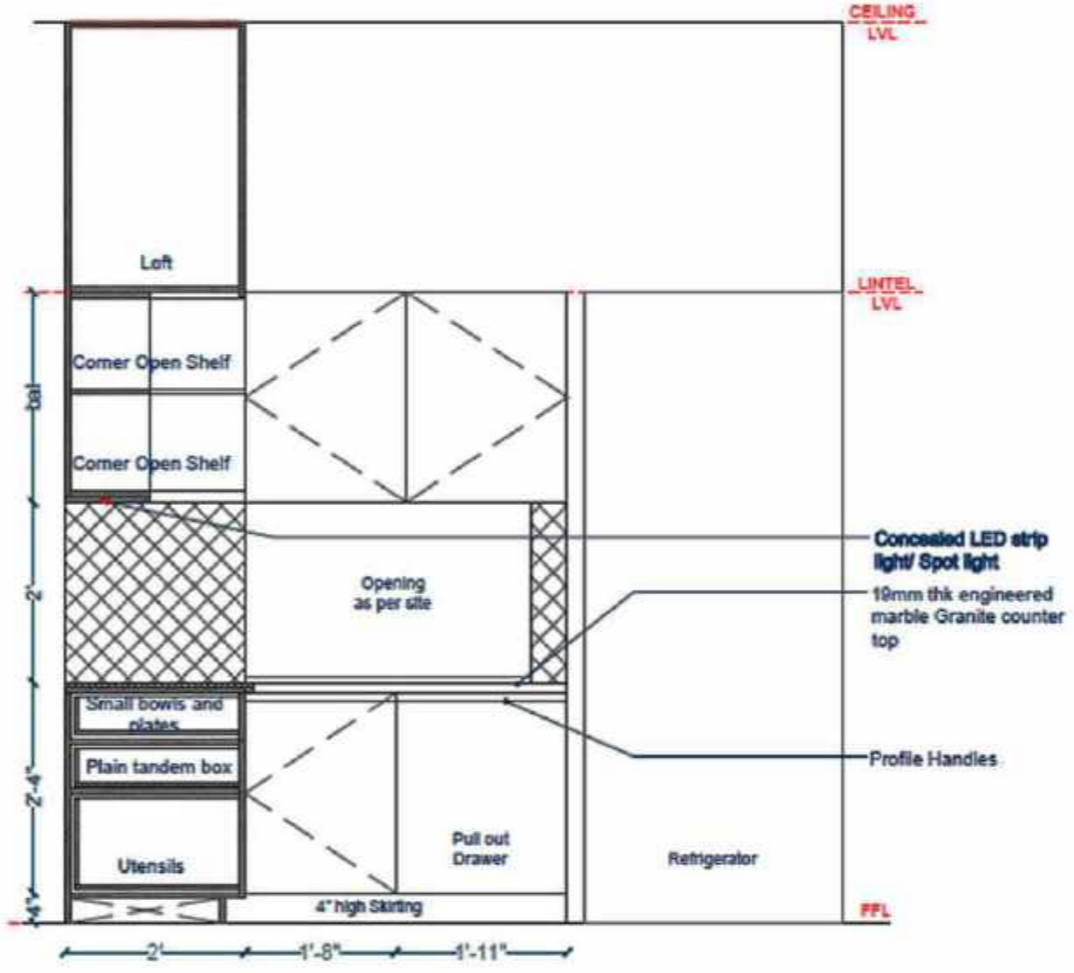
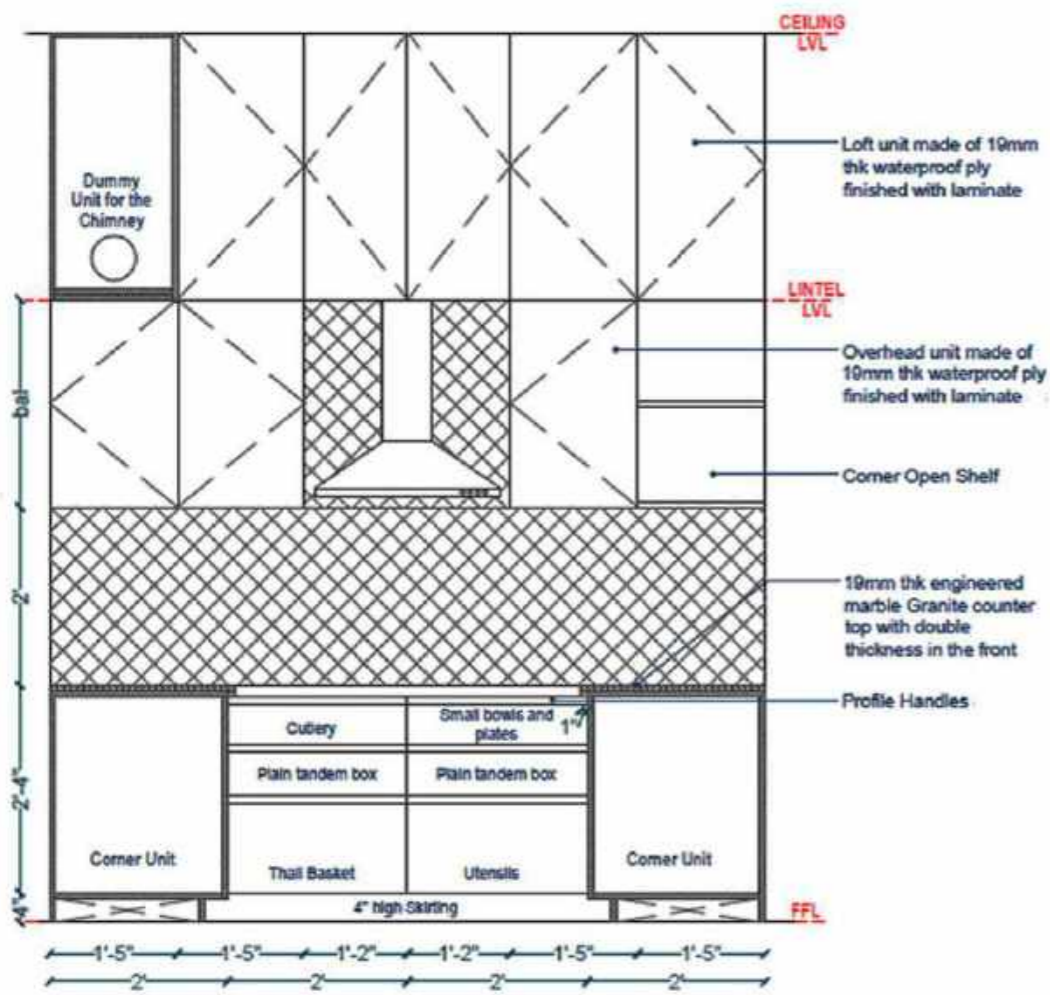
## MATERIAL PALETTE



EBONY ASPEN FOR THE OVERHEAD COUNTERS

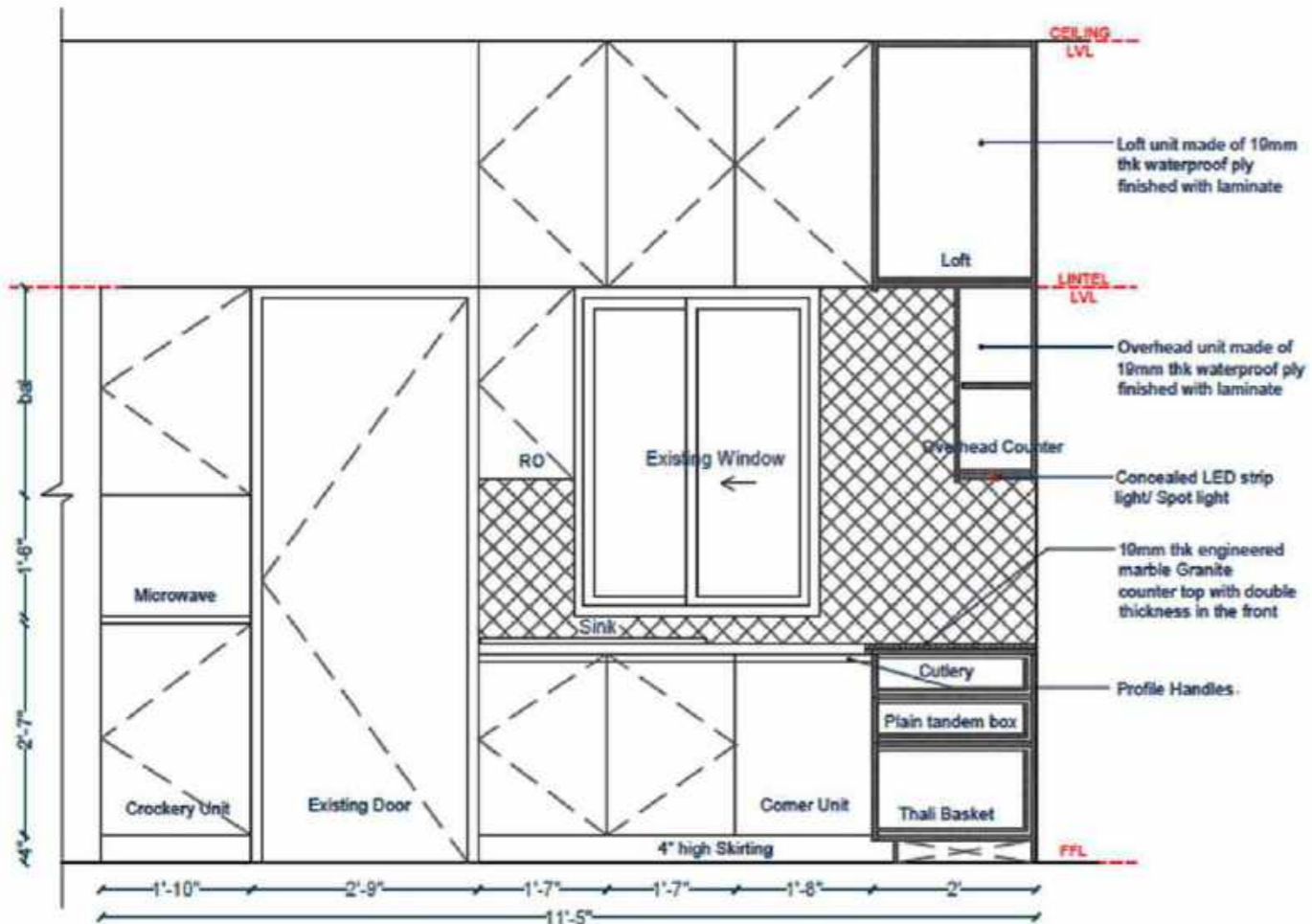
OXFORD GREY FOR THE UNDER COUNTERS

OFF-WHITE FOR THE LOFT

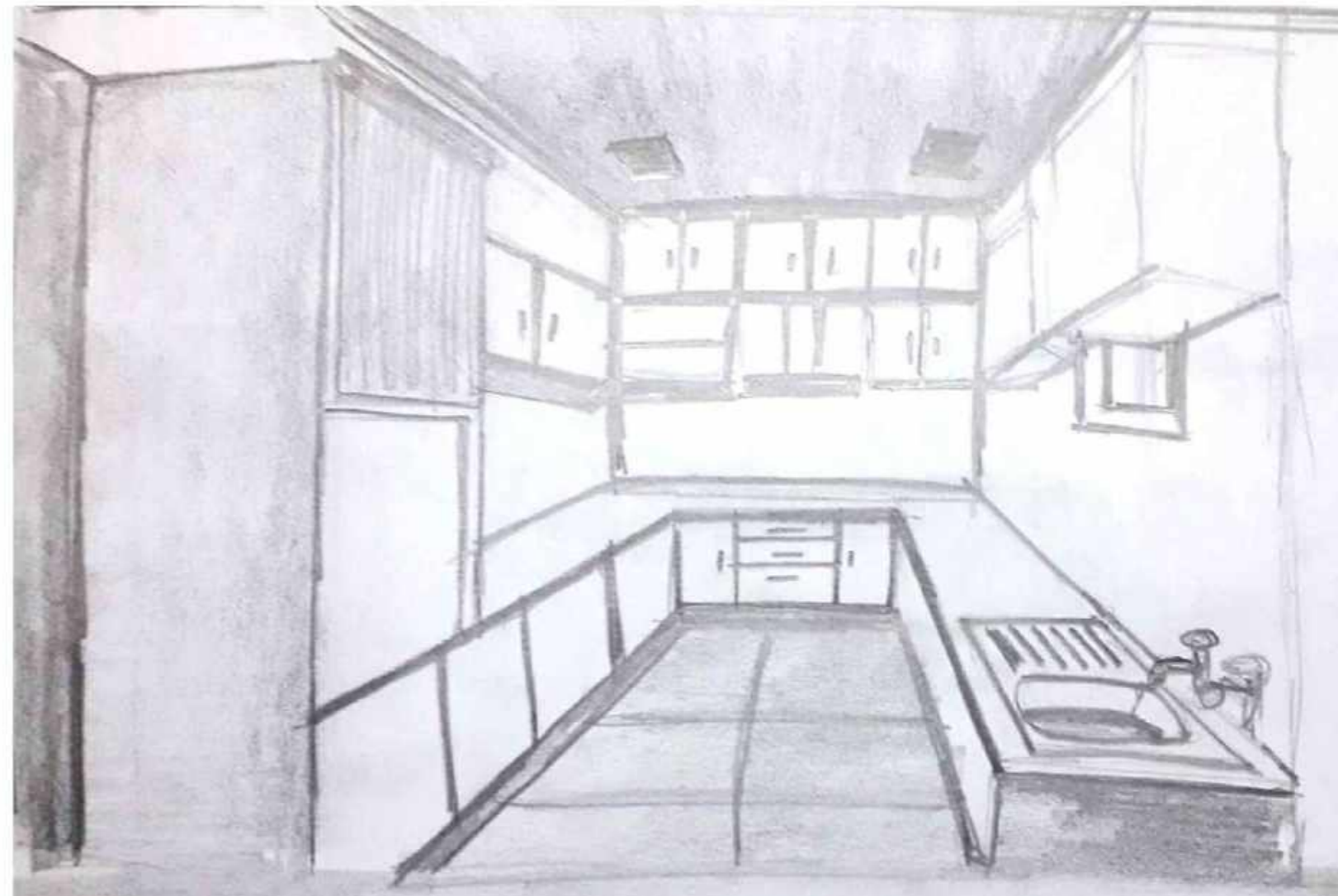


EXTERNAL ELEVATION A

EXTERNAL ELEVATION B



EXTERNAL ELEVATION C



# PAINT THE CITY

## FLYOVER BEAUTIFICATION



The Ugly Indian are a group of volunteers who gather on the weekends to carry out "spot-fixes".

The main targetted areas are the under flyover areas, public places where people throw garbage etc.

# PHOTO MOSAICS

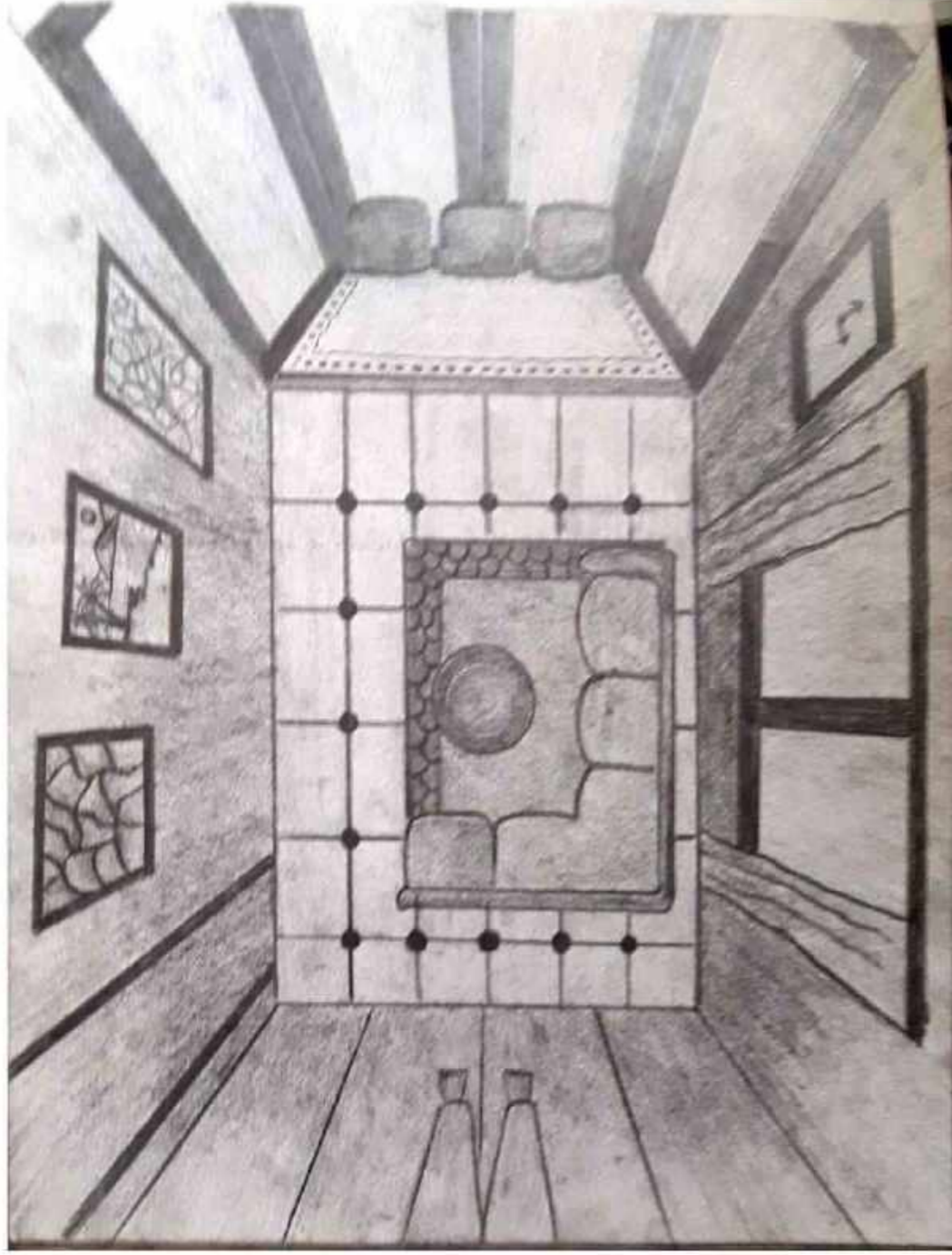
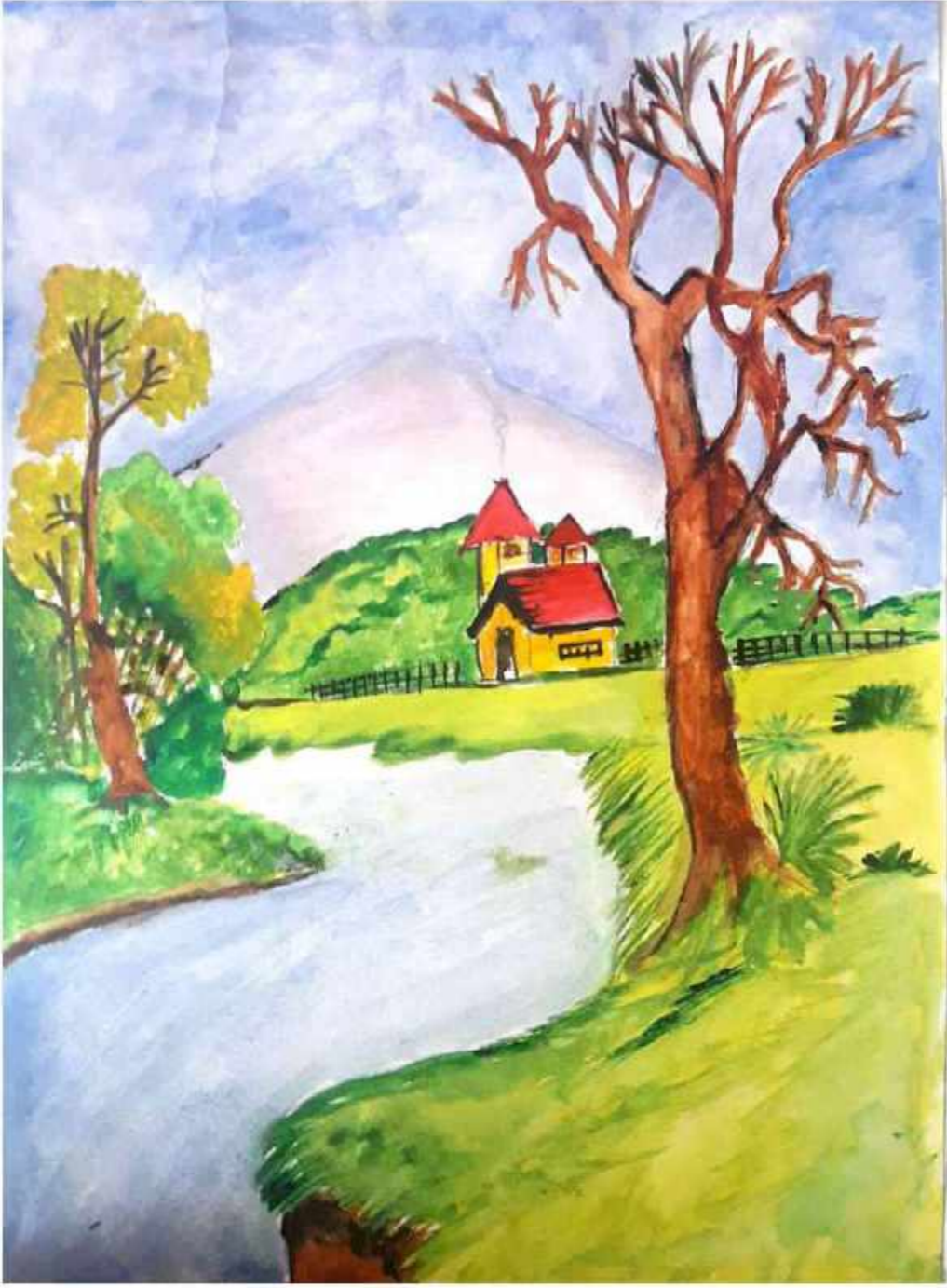
DESIGN - PRINT - PRODUCT



Paid extra curricular photoshop works.  
Self taught entrepreneurship



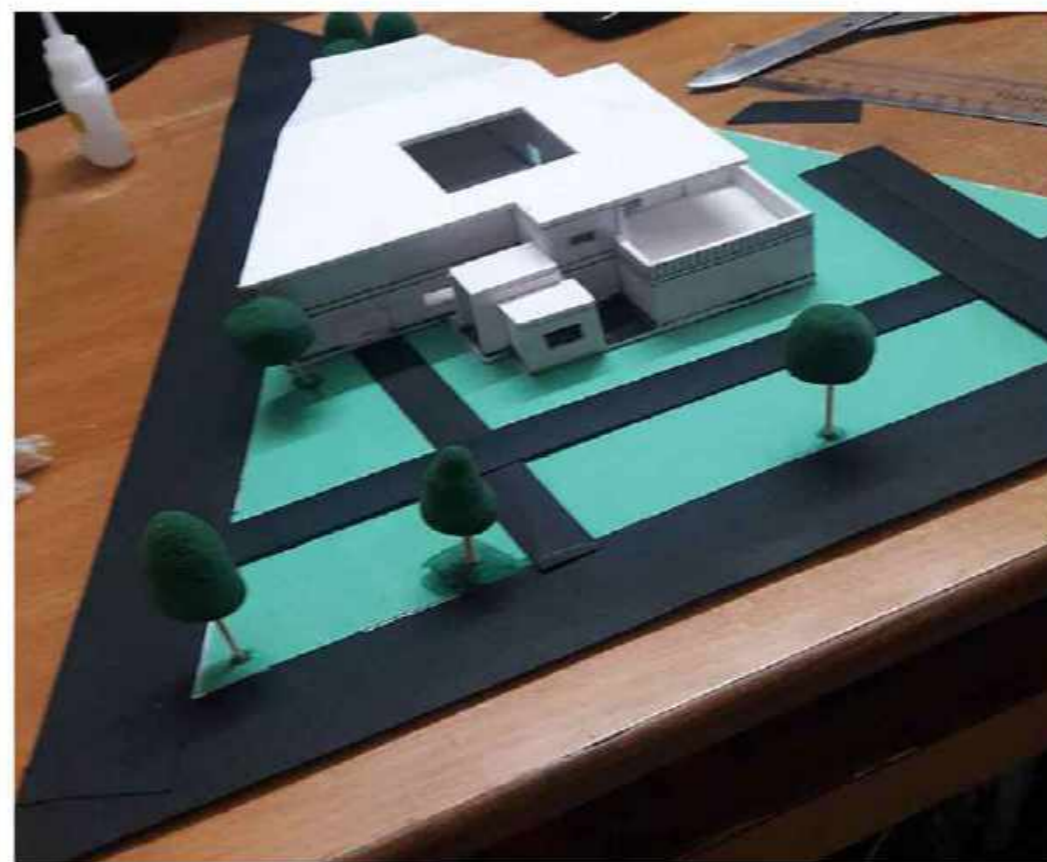
# FEELING ALIVE



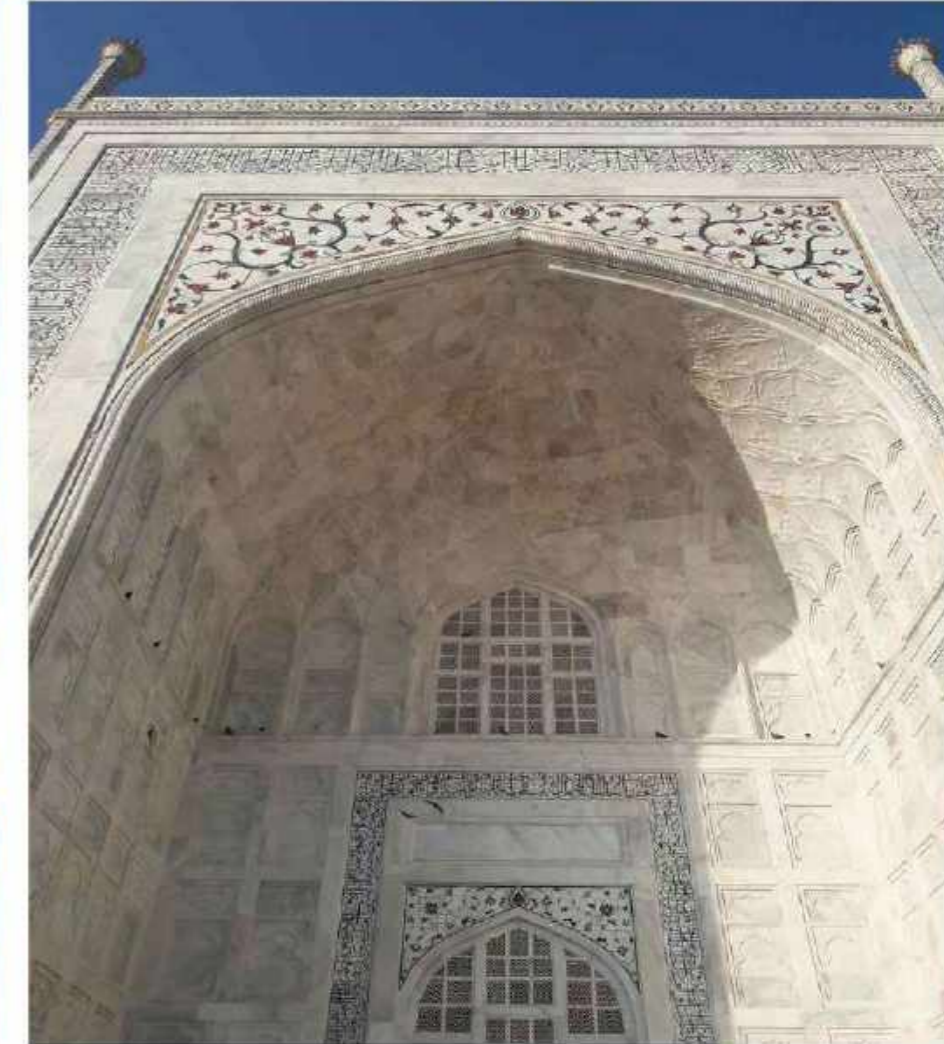
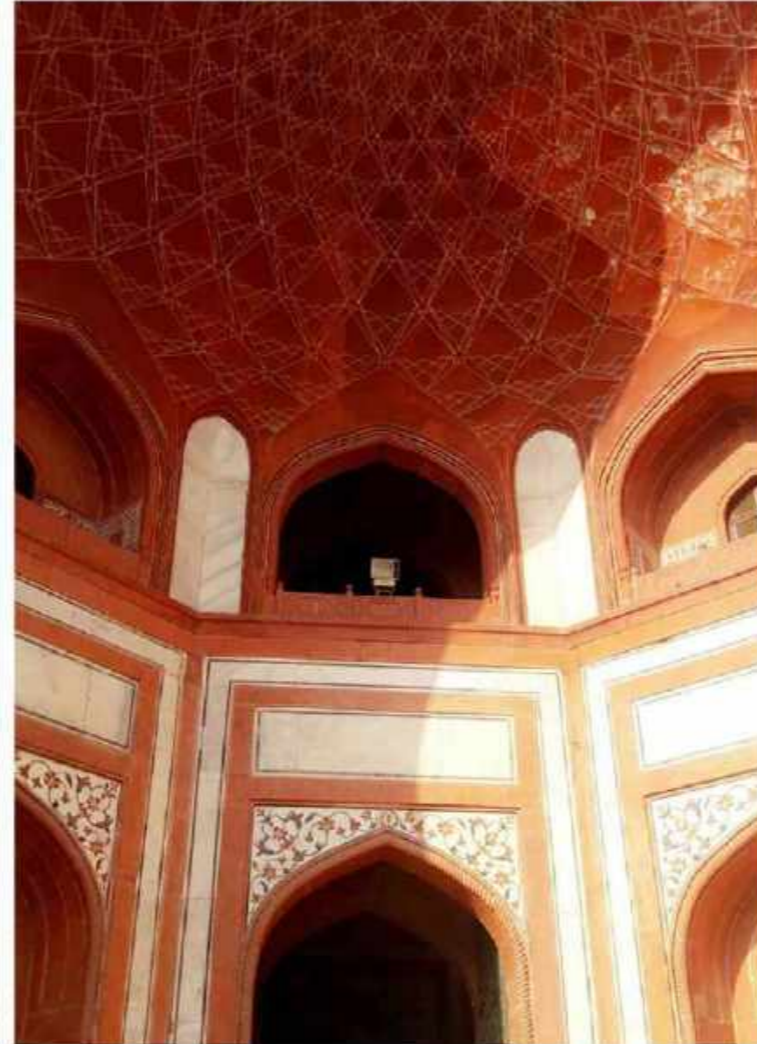
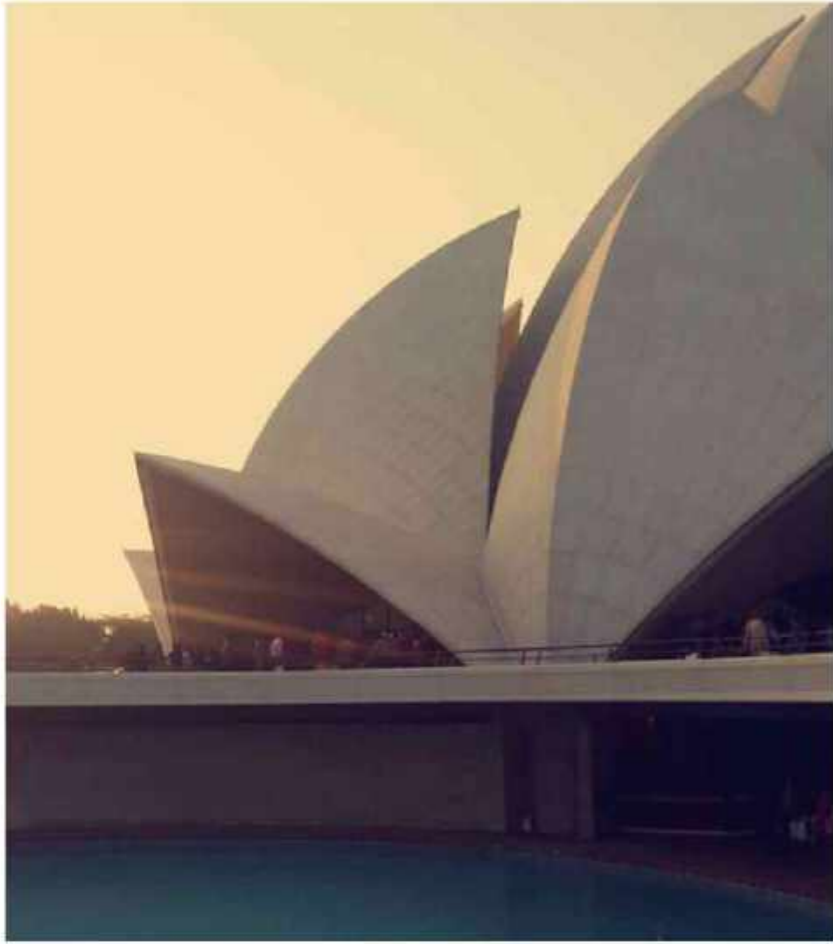
# FEELING ALIVE



# ARCHITECTURAL MODELS



# EXPRESSION OF ART THROUGH ARCHITECTURE



THANK YOU.