



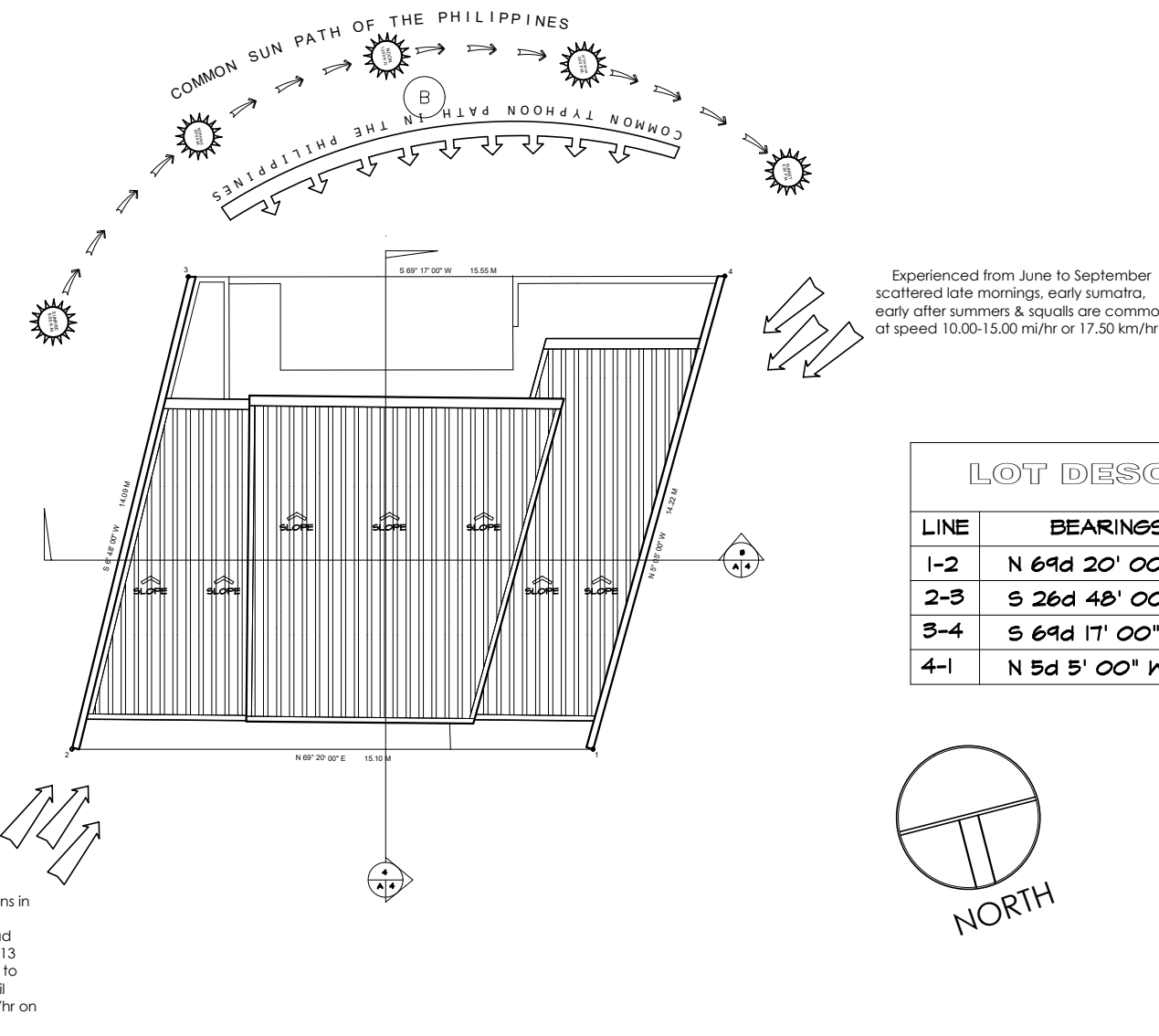
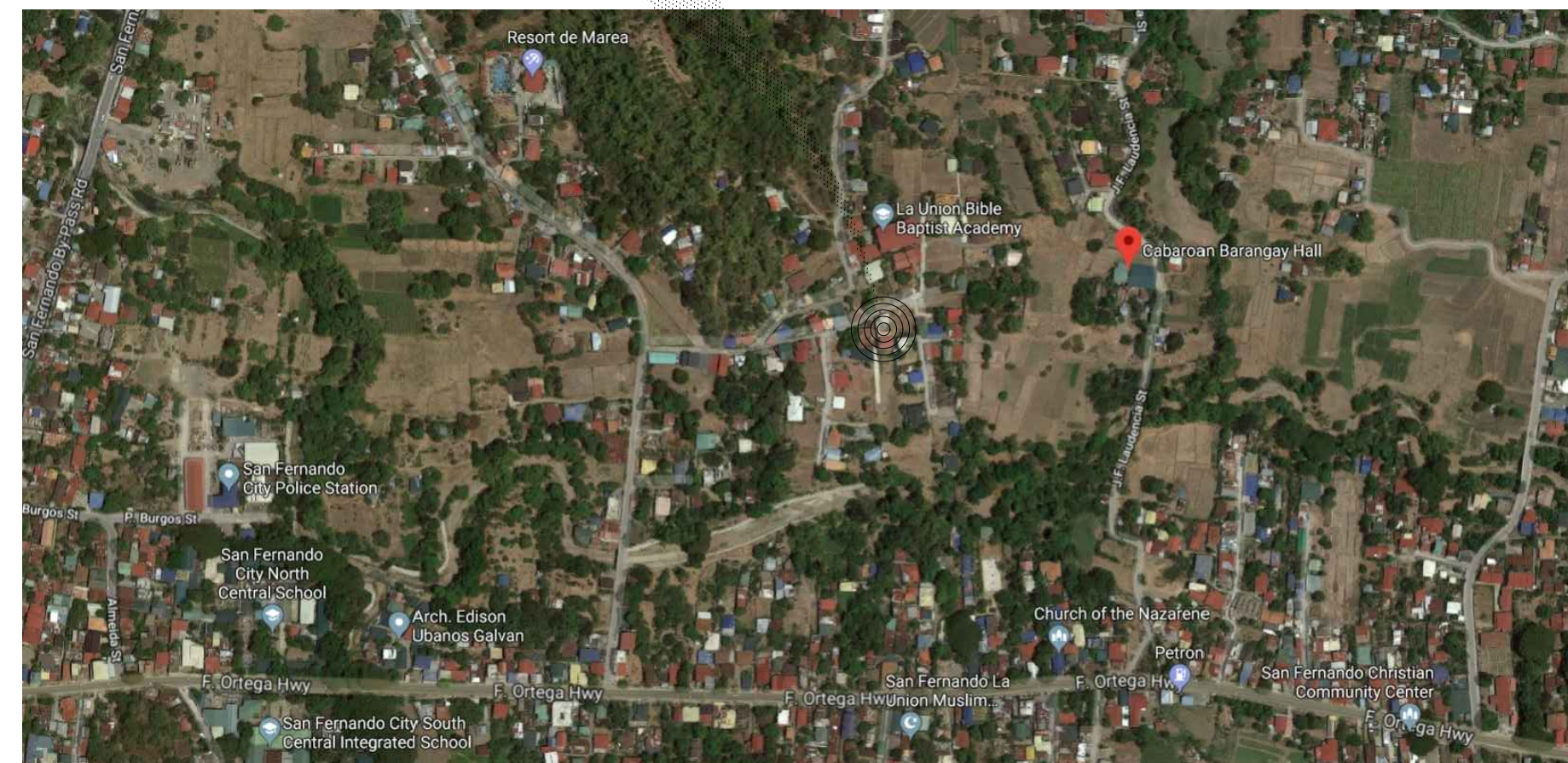
ASARIAS APARTMENT BUILDING: "A TWO-STOREY APARTMENT BUILDING PROJECT"
 Location: Cabaroon, San Fernando City, La Union
L.O.L. Architecture + Design
 Architect: Libby-Eldridge O. Laureta

TABLE OF CONTENTS		OFFICE OF THE BUILDING OFFICIAL REPUBLIC OF THE PHILIPPINES DEPARTMENT OF PUBLIC WORKS AND HIGH WAYS
SHEET NO.	SHEET CONTENTS	
A-1 1	PERSPECTIVE SITE DEVELOPMENT PLAN VICINITY MAP TABLE OF CONTENTS SIGNATORIES	LAND USE AND ZONING
A-2 2	GROUND FLOOR PLAN SECOND FLOOR PLAN ROOF PLAN	
A-3 3	FRONT ELEVATION RIGHT SIDE ELEVATION LEFT SIDE ELEVATION REAR ELEVATION CROSS SECTION LONGITUDINAL SECTION	
A-4 4	1ST FLOOR REFLECTED CEILING PLAN 2ND FLOOR REFLECTED CEILING PLAN CEILING DETAILS SCHEDULE OF FINISHES DOORS SCHEDULE	
A-5 5	WINDOWS SCHEDULE RAILING DETAIL	LINE AND GRADE
S-1 6	FOUNDATION PLAN FRAMING PLAN ROOF BEAM PLAN ROOF FRAMING PLAN	ARCHITECTURAL
S-2 7	BEAM SCHEDULE COLUMN DETAIL TYPICAL BEAM DETAIL C1F1 DETAIL C2F2 DETAIL	
S-3 8	TRUSS DETAIL WF DETAIL DETAIL 1 DETAIL 2 DETAIL 3	
S-4 9	STRUCTURAL NOTES	STRUCTURAL
E-1 10	1ST FLOOR POWER LAY OUT 2ND FLOOR POWER LAYOUT 1ST FLOOR LIGHTING LAYOUT 2ND FLOOR LIGHTING LAYOUT	SANITARY
E-2 11	ELECTRICAL SYMBOLS LOAD TABULATION AND COMPUTATION SERVICE ENTRY LAYOUT MOUNTING HEIGHTS RISER DIAGRAM ELECTRICAL NOTES	
P-1 12	1ST FLOOR WATER LINE 2ND FLOOR WATER LINE 1ST FLOOR SEWER LINE 2ND FLOOR SEWER LINE	ELECTRICAL
P-2 13	1ST FLOOR STORM DRAINAGE LAYOUT 2ND FLOOR STORM DRAINAGE LAYOUT CATCH BASIN DETAIL PLUMBING SYMBOLS PLUMBING NOTES	FIRE DEPARTMENT
P-3 14	ISOMETRIC WATERLINE DIAGRAM SEPTIC TANK DETAILS AND COMPUTATIONS	

1
A 1
PERSPECTIVE



SITE



2
A 1
SITE DEVELOPMENT PLAN
SCALE 1:100m

3
A 1
VICINITY MAP
SCALE NTS

LIBBY-ELDRIDGE O. LAURETA ARCHITECT	DESIGN L.O.L.	Important: R.A. 9266 (Archite Law '04) & R.A. 8293 (Intellectual Property Law)	DATE	REVISION	DESCRIPTION	PROJECT TITLE	OWNER	SHEET CONTENTS	SHEET NO.
PRC NO. 0035387	CAD L.O.L.	These drawings as instruments of service, are the properties and documents of the Architect. It shall be unlawful for any person without the written consent of the Architect or authors of the said documents to duplicate or copy the said instruments.	01/23/2018			ASARIAS APARTMENT BUILDING [A TWO-STOREY APARTMENT BUILDING PROJECT]	MR. GODOFREDO ASARIAS	PERSPECTIVE SITE DEVELOPMENT PLAN VICINITY MAP TABLE OF CONTENTS SIGNATORIES	A 01
PTR NO. LU-2550021	CHECKED L.O.L.		04/02/2018						
IAPOA NO. 32265-196900-071917	DATE 04/02/2018						LOCATION : PUROK II, BARANGAY CABAROAN, SAN FERNANDO CITY, LA UNION		