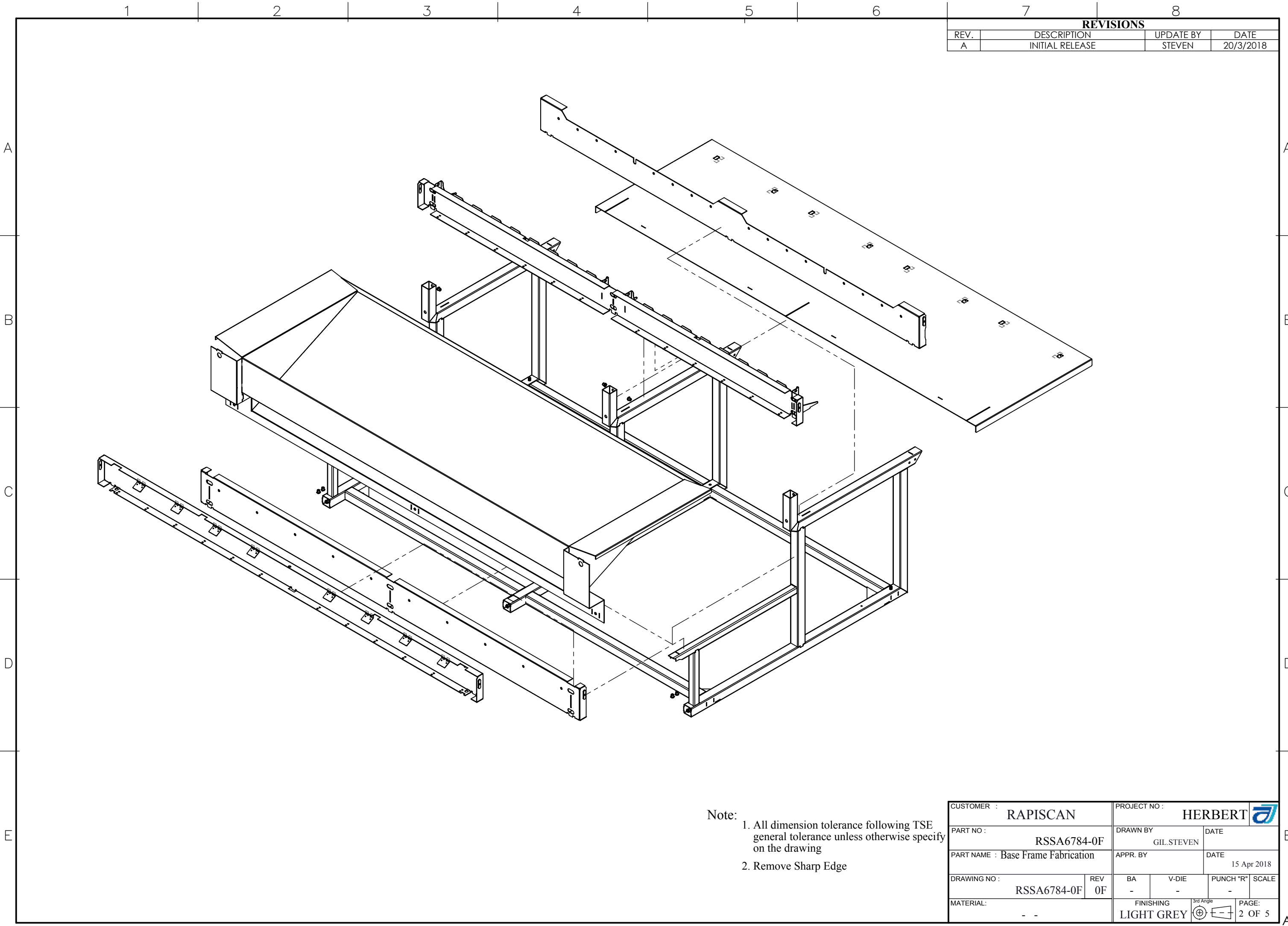


REVISIONS			
REV.	DESCRIPTION	UPDATE BY	DATE
A	INITIAL RELEASE	STEVEN	20/3/2018

17	F-MCHX02M080-016SS	DIN933 SCREW HEX HEAD W.FULL THREAD M8X16 (A2/70)	2
16	F-NSFH-BZ-M060-015	NUTSERT FULL HEX FLUSH HEAD SF M6	12
15	FP-S-M10-2ZI	CLS-M10-1 SELF CLINCHING NUTS	4
14	RSSF10458-0B	Para Divest Drive Band Guard - Bottom	2
13	RSSF10127-0A	Sensor Mount	16
12	RSSF10129-00	Base Frame Foot Mount	4
11	RSSF10124-0A	Staff Side Ticket Tray	1
10	RSSF8277-00	guard spacer-1	8
9	RSSF10128-00	Passanger Side Lower Ticket Tray Part 3	2
8	RSSF10126-00	Pass Side Lower Ticket Tray Part 2	1
7	RSSF10125-0D	Passanger Side Lower Ticket Tray Part 1	1
6	RSSF10130-0A	Base Frame Staff Side Top Gusset	3
5	RSSF10122-00	Side Channel - Pass high	1
4	RSSF10120-0A	Side Channel - Staff high	1
3	RSSF10123-0D	Side Channel - Pass low	1
2	RSSF10121-0D	Side Channel - Staff low	1
1	SA6784-0F-B00	Base Frame Fabrication (ASSY)	1
ITEM	PART NUMBER	DESCRIPTION	qty

Note:
1. All dimension tolerance following TSE
general tolerance unless otherwise specify
on the drawing
2. Remove Sharp Edge


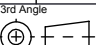
CUSTOMER : RAPISCAN		PROJECT NO : HERBERT	
PART NO : RSSA6784-0F		DRAWN BY : GIL.STEVEN	
PART NAME : Base Frame Fabrication		DATE : 15 Apr 2018	
DRAWING NO : RSSA6784-0F		REV : 0F	
MATERIAL : - - mm		FINISHING : LIGHT GREY	
		PUNCH "R" : -	
		SCALE : -	
		PAGE : 1 OF 5	

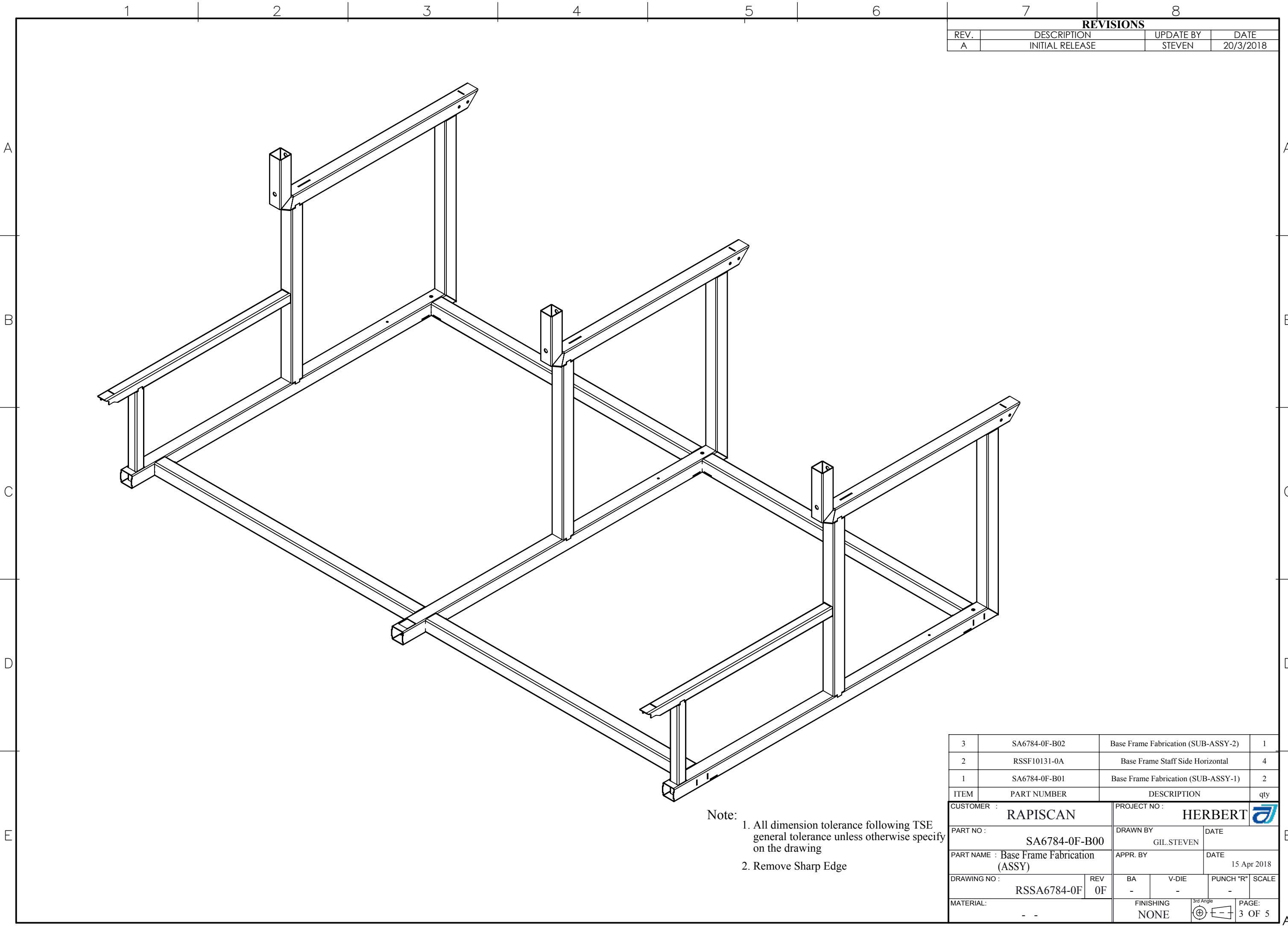


REVISIONS			
REV.	DESCRIPTION	UPDATE BY	DATE
A	INITIAL RELEASE	STEVEN	20/3/2018

Note:

1. All dimension tolerance following TSE general tolerance unless otherwise specify on the drawing
2. Remove Sharp Edge

CUSTOMER : RAPISCAN		PROJECT NO : HERBERT			
PART NO : RSSA6784-0F		DRAWN BY GIL.STEVEN		DATE	
PART NAME : Base Frame Fabrication		APPR. BY		DATE 15 Apr 2018	
DRAWING NO : RSSA6784-0F		REV 0F	BA -	V-DIE -	PUNCH "R" SCALE -
MATERIAL: - -		FINISHING LIGHT GREY		3rd Angle 	PAGE: 2 OF 5

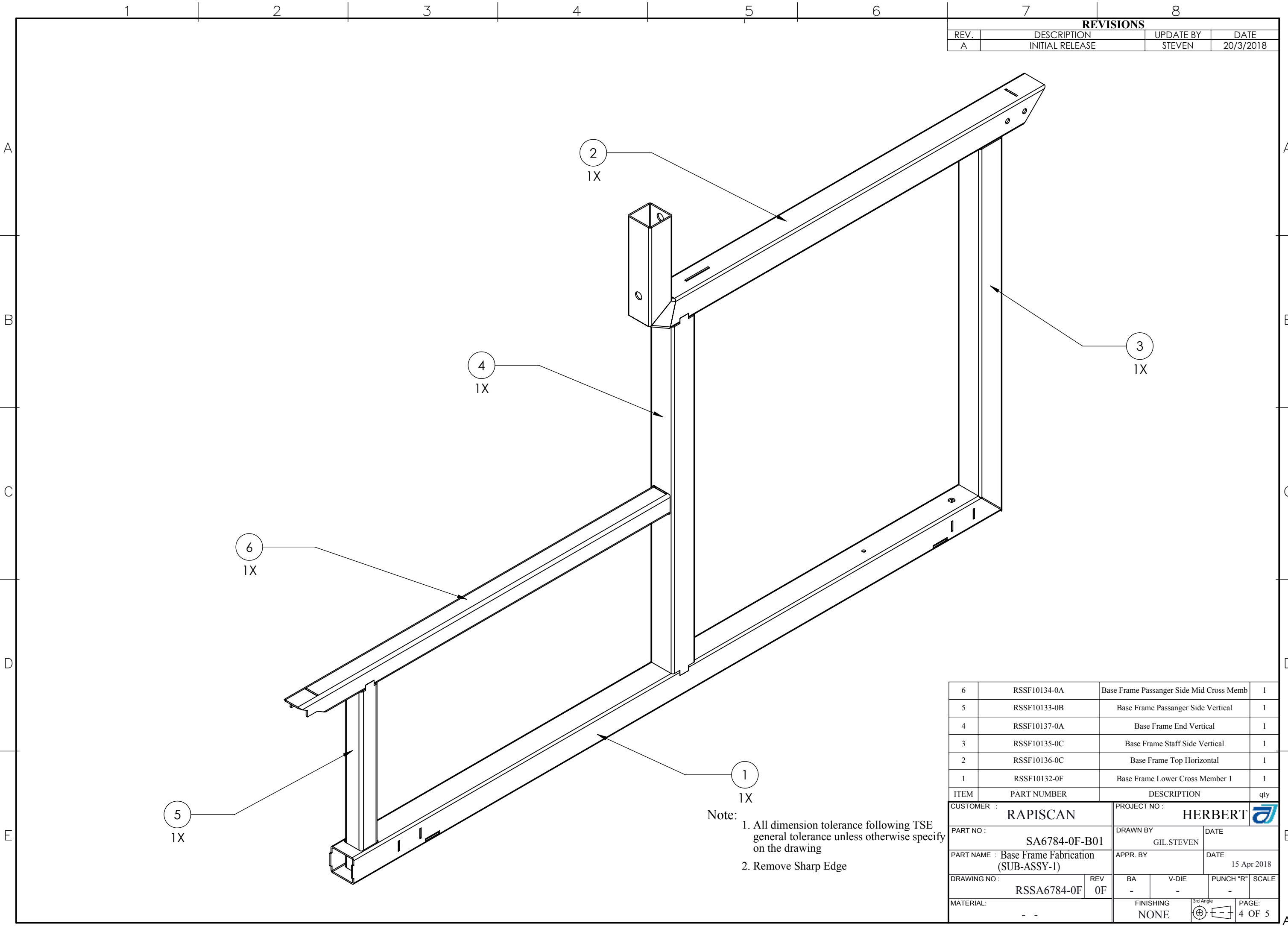


REVISIONS			
REV.	DESCRIPTION	UPDATE BY	DATE
A	INITIAL RELEASE	STEVEN	20/3/2018

Note:

- 1. All dimension tolerance following TSE general tolerance unless otherwise specify on the drawing
- 2. Remove Sharp Edge

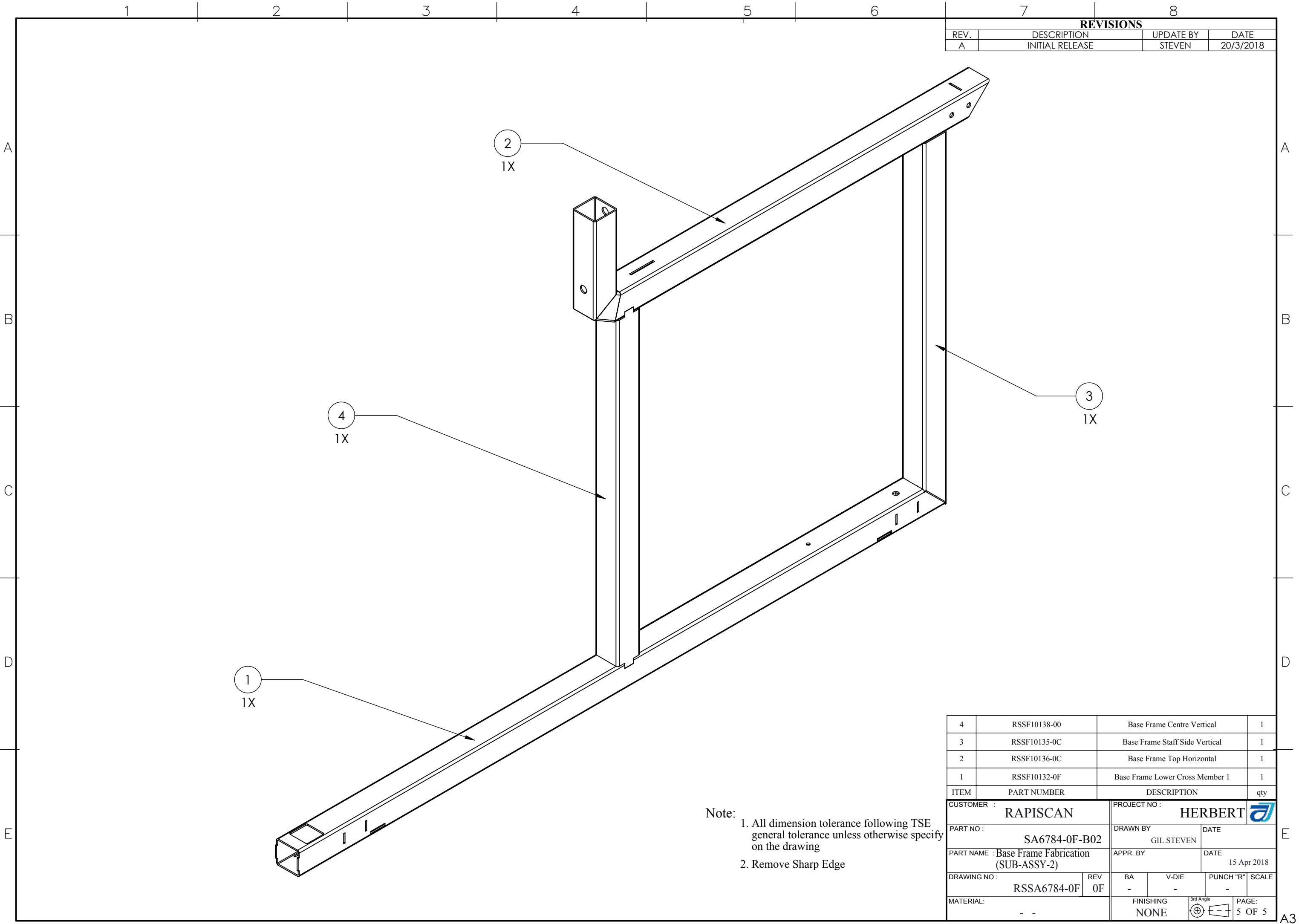
3	SA6784-0F-B02	Base Frame Fabrication (SUB-ASSY-2)	1
2	RSSF10131-0A	Base Frame Staff Side Horizontal	4
1	SA6784-0F-B01	Base Frame Fabrication (SUB-ASSY-1)	2
ITEM	PART NUMBER	DESCRIPTION	qty
CUSTOMER : RAPISCAN		PROJECT NO : HERBERT	
PART NO : SA6784-0F-B00		DRAWN BY GIL.STEVEN	DATE
PART NAME : Base Frame Fabrication (ASSY)		APPR. BY	DATE 15 Apr 2018
DRAWING NO : RSSA6784-0F	REV 0F	BA -	V-DIE -
MATERIAL: - -		FINISHING NONE	PUNCH "R" SCALE
		3rd Angle	PAGE: 3 OF 5



REVISIONS			
REV.	DESCRIPTION	UPDATE BY	DATE
A	INITIAL RELEASE	STEVEN	20/3/2018

6	RSSF10134-0A	Base Frame Passanger Side Mid Cross Memb		1
5	RSSF10133-0B	Base Frame Passanger Side Vertical		1
4	RSSF10137-0A	Base Frame End Vertical		1
3	RSSF10135-0C	Base Frame Staff Side Vertical		1
2	RSSF10136-0C	Base Frame Top Horizontal		1
1	RSSF10132-0F	Base Frame Lower Cross Member 1		1
ITEM	PART NUMBER	DESCRIPTION		qty
CUSTOMER : RAPISCAN		PROJECT NO : HERBERT		
PART NO : SA6784-0F-B01		DRAWN BY GIL.STEVEN	DATE	
PART NAME : Base Frame Fabrication (SUB-ASSY-1)		APPR. BY	DATE 15 Apr 2018	
DRAWING NO : RSSA6784-0F	REV 0F	BA -	V-DIE -	PUNCH "R" SCALE
MATERIAL: - -		FINISHING NONE	3rd Angle	PAGE: 4 OF 5

Note:
1. All dimension tolerance following TSE general tolerance unless otherwise specify on the drawing
2. Remove Sharp Edge



REVISIONS			
REV.	DESCRIPTION	UPDATE BY	DATE
A	INITIAL RELEASE	STEVEN	20/3/2018

- Note:
- 1. All dimension tolerance following TSE general tolerance unless otherwise specify on the drawing
 - 2. Remove Sharp Edge

4	RSSF10138-00	Base Frame Centre Vertical	1
3	RSSF10135-0C	Base Frame Staff Side Vertical	1
2	RSSF10136-0C	Base Frame Top Horizontal	1
1	RSSF10132-0F	Base Frame Lower Cross Member 1	1
ITEM	PART NUMBER	DESCRIPTION	qty
CUSTOMER : RAPISCAN		PROJECT NO : HERBERT	
PART NO : SA6784-0F-B02		DRAWN BY GIL.STEVEN	DATE
PART NAME : Base Frame Fabrication (SUB-ASSY-2)		APPR. BY	DATE 15 Apr 2018
DRAWING NO : RSSA6784-0F	REV 0F	BA -	V-DIE -
MATERIAL: - -		FINISHING NONE	PUNCH "R" SCALE
		3rd Angle	PAGE: 5 OF 5