

S A R A H E A R N E S T

A r c h i t e c t u r e &
I n t e r i o r D e s i g n

P O R T F O L I O

2 0 1 6 - 2 0 2 0



TABLE

OF CONTENTS

Mansionly, Bengaluru (Nov 2018 - May 2020)

- EDIFY School, Somanahalli, Bengaluru3
- Myntra Collection Centre, AKR Tech Park, Bengaluru5
- G+2 Villa, Whitefield, Bengaluru7
- G+2 Villa, Devanahalli, Bengaluru ...10
- Salon, EMBASSY Boulevard, Bengaluru ...11

C&C Design Studio, Dubai (Nov 2017 - Oct 2018)

- G+2 Villa, Emirates Hills, Dubai13
- G+2 Villa, Palm Jumeirah, Dubai14
- Shopping Mall, Meraas Estate, Dubai17

Qatar Design Consortium, Qatar (Jan 2016 - Oct 2016)

- Al Bayt Stadium, Al Khor, Qatar19
- G+1 Villa, Umm Salal Ali, Qatar21

Miscellaneous

- Personal Designs23

M A N S I O N L Y, Bengaluru

Nov 2018 - Present

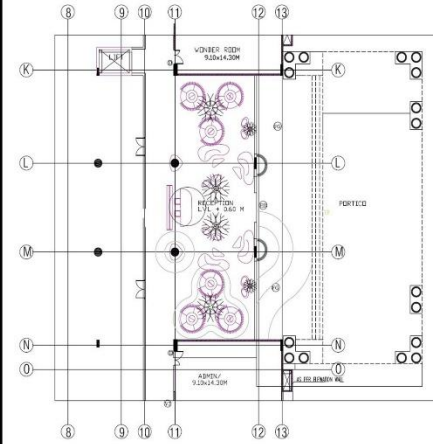




GFC Sample
Reception Area



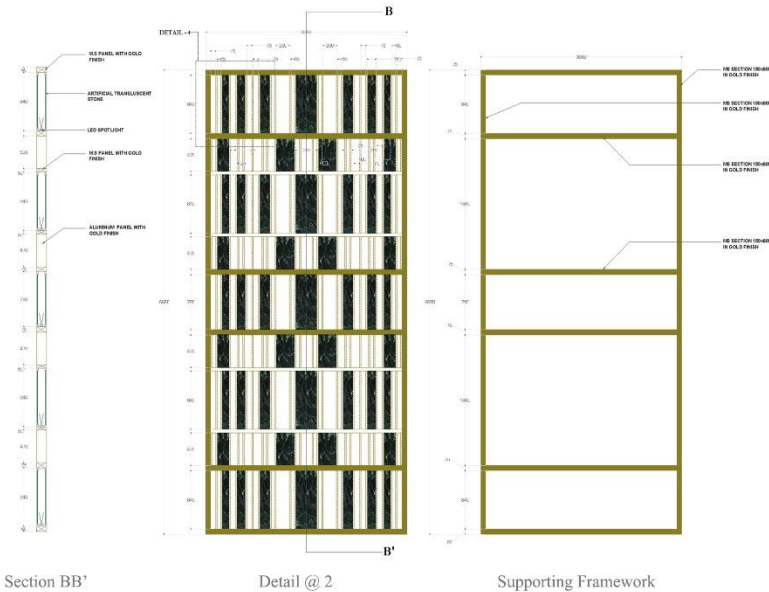
Layout Plan
Reception Area



Project Overview

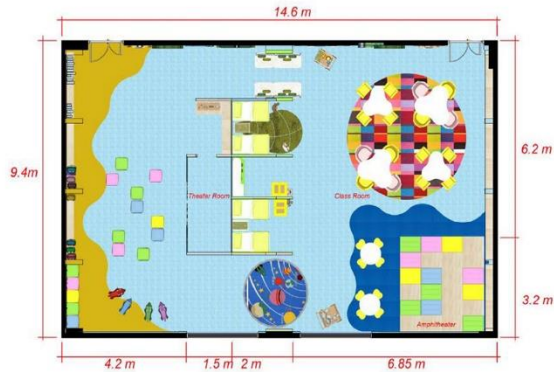
Project Type : School
Location : Somanahalli,
Bengaluru

Scope : - Interior design concept development of reception area, wonder room, dance and music rooms - Material selection - Site coordination - GFC drawings



Layout Plan

Wonder Room



- Colourful, exuberant, stimulating spaces
- Geometrical design elements and accents
- Rubber x carpet flooring to ensure safety
- Flexible seating to promote interaction

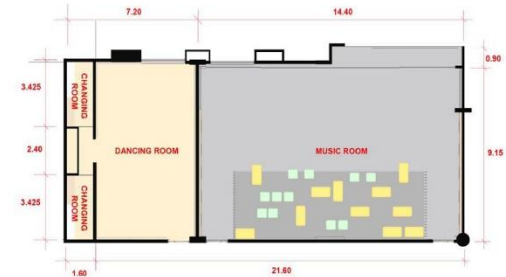


Music Room



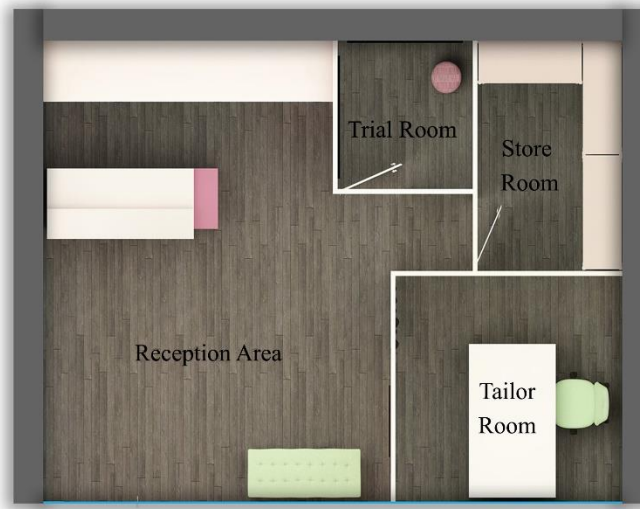
Dance Room

- Acoustic panelling on walls and ceiling, and carpet flooring in the music room ensure good acoustics
- Vibrant colours to instill feelings of rejuvenation and energy, and wooden laminate flooring with full height mirrors are some of the features of the dance room



Layout Plan

Dance & Music Rooms



Layout Plan

Project Overview

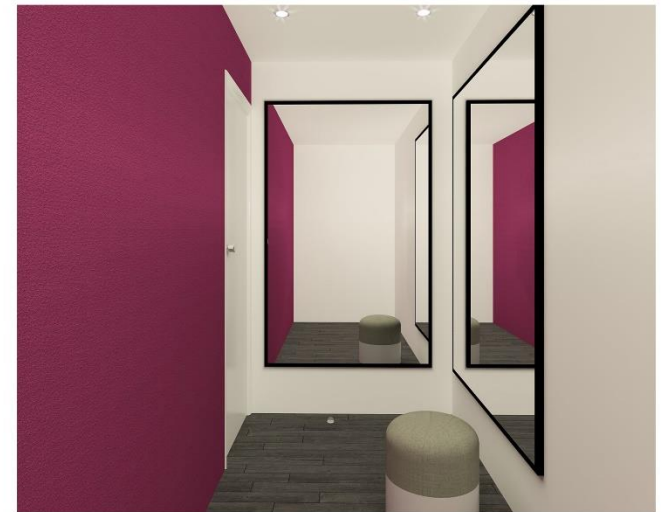
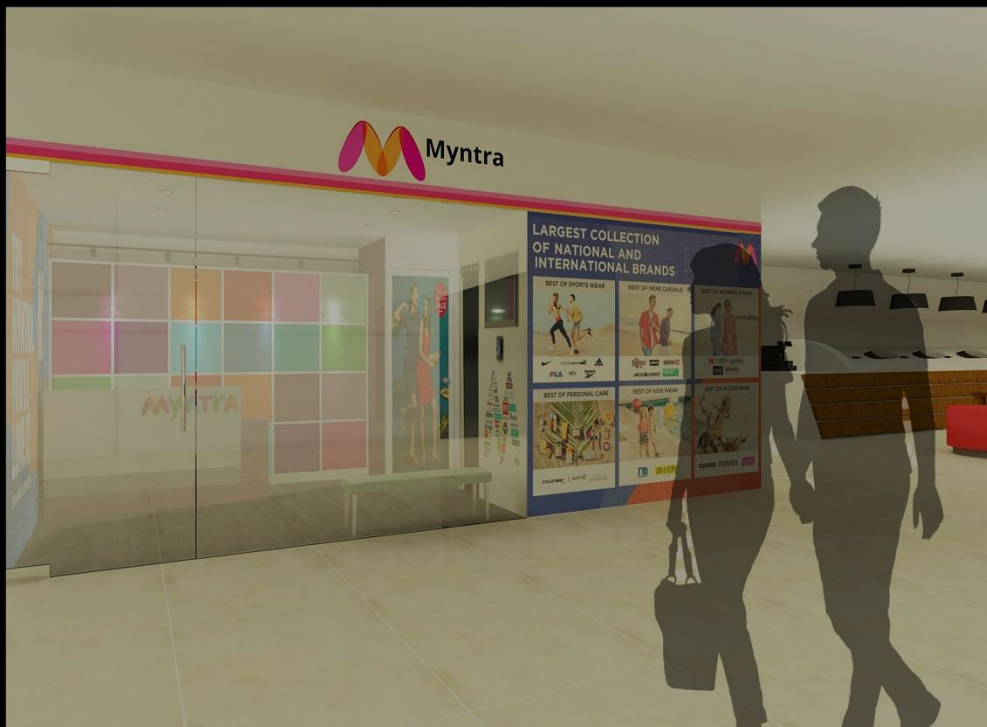
Project Type: Collection Centre for Myntra

Location: Myntra Head Office, AKR Tech Park

Scope: Interior Design

Design Ideology

- A store where customers can pick, exchange and try their orders
- A compact, quick and user friendly store
- Facilities include an in-house tailor for alterations, a trial room, ample storage space and a feedback unit



Trial Room



Reception Area



Reception Area



Tailor Room



Store Room

Key Design Features

- Vibrant colours
- Branding
- Multifunctional space
- Storage



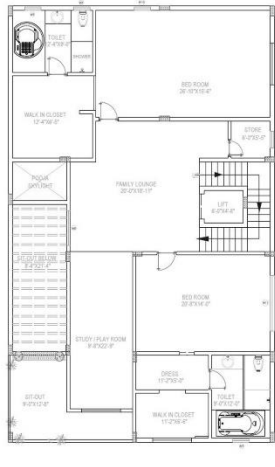
Formal Living Area



Dining Area



Ground Floor



First Floor



Second Floor

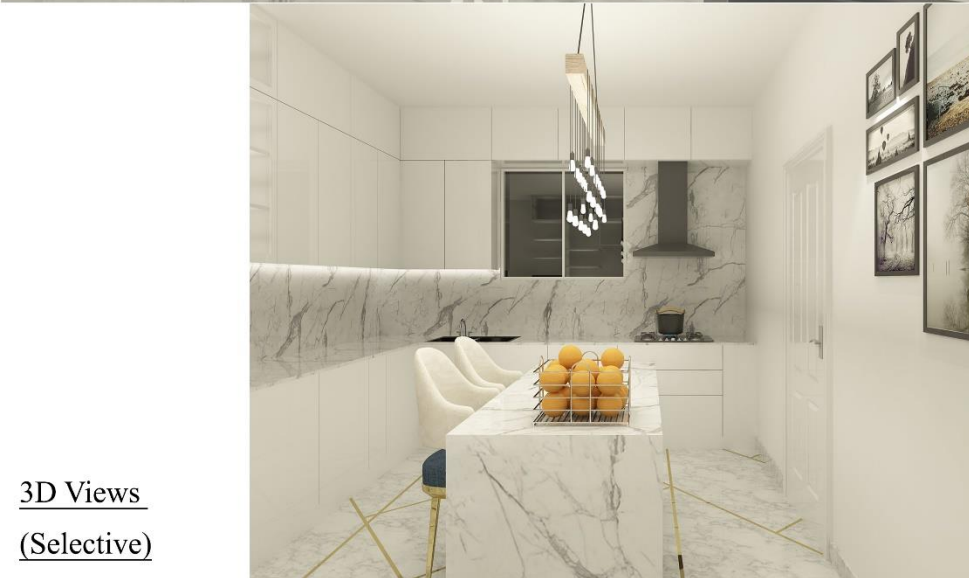
Project Overview

Project Type : G+2 Villa *Location* : Whitefield, Bengaluru

Scope : - Interior design mood board presentation
- Design & 3D Development

Theme/Concept :

- Contemporary with classical influences - neutral colour scheme with green, blue and pink accents - extensive use of wallpapers, mirrors, and marble cladding on walls with wooden and golden trims for a luxurious appeal



Kitchen, Dining Area & Informal Living Area

3D Views
(Selective)

Master Bedroom



Master Bathroom



Daughter's Bedroom

Daughter's Bedroom

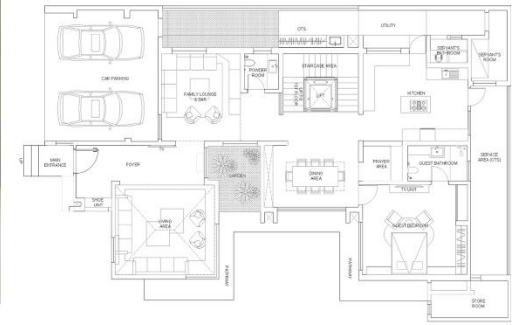
Daughter's Bathroom



Living Area



Dining Area



Layout Plans

Ground Floor

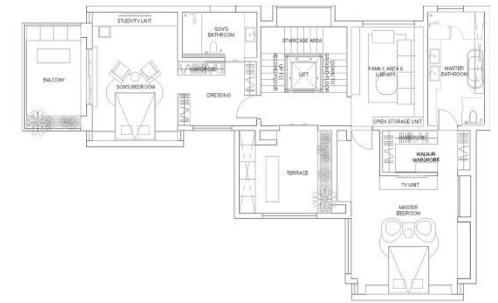
Project Overview

Project Type : G+2 Villa

Location : Brigade Orchards,
Devanahalli,
Bengaluru

Scope : - Interior design concept
development - Material selection
- GFC drawings

Theme/Concept : - Modern
contemporary - extensive use of
marble, gold tones for a luxuri-
ous appeal - neutral colour
scheme with accents of blue,
green and teal



First Floor



Guest Bedroom



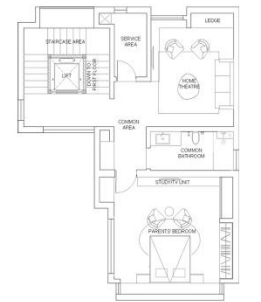
Son's Bedroom



Master Bedroom



Parents' Bedroom



Second Floor



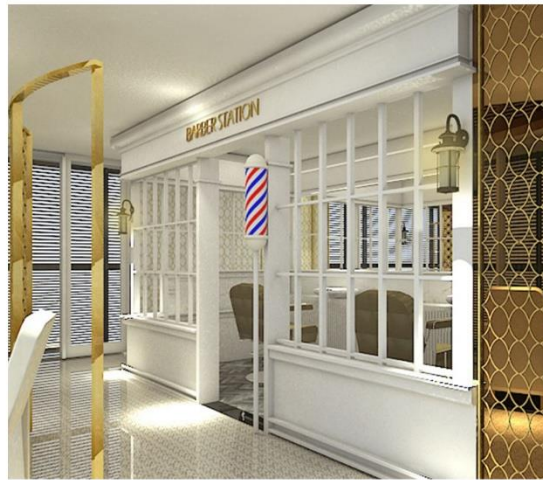
Reception Area



Nail Bar Section



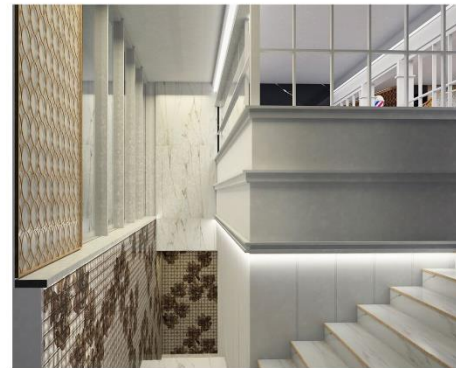
Hair Styling & Make-up Area



Barber Station



Pedicure/manicure Area



Staircase Area

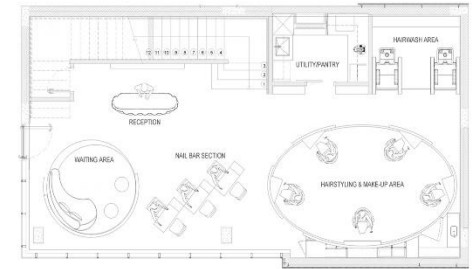
Project Overview

Project Type : Salon for Embassy Group

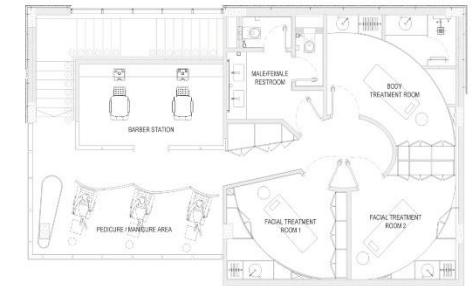
Location : Embassy Boulevard, Yelahanka, Bengaluru

Scope : Interior design concept development - GFC drawings

Theme/Concept : Modern - luxurious - elegant
 - use of rich materials like Italian marble, Sicis mosaic tiles, cnc jalis finished in gold - neutral color scheme with extensive use of gold finishes - well lit functional spaces



Ground Floor



First Floor

Layout Plans



C & C D E S I G N S T U D I O, Dubai

Nov 2017 - Oct 2018

Project Overview

Project Type : G+2 Villa *Location* : Emirates Hills, Dubai

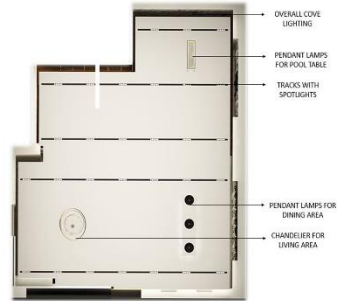
Scope : - Interior design of living area, dining area, games room and gym

Theme/Concept : - Modern, bold, symmetrical and functional details
- neutral colour scheme with subtle tones - absence of ornamentation
- extensive use of natural, organic materials like wood, leather and slate

Material Palette



Layout Plan



Lighting Layout



Living Area



Living Area



Dining Area



Dining Area



Games Area



Gym



SF Master Bedroom



SF Master Bathroom

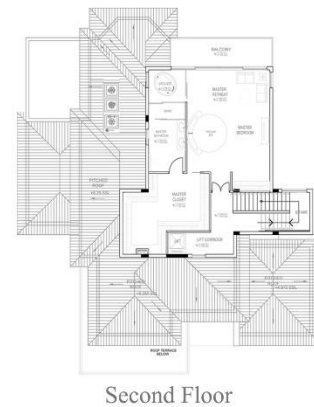
Project Overview

Project Type : G+2 Villa

Location : Palm Jumeirah, Dubai

Scope : - Interior design of bedrooms & bathrooms -
landscape design

Theme/Concept for interiors: - Modern contemporary
x luxurious - extensive use of marble, leather, wood -
interesting lighting patterns to enhance visual appeal



Layout Plans
Interior Design



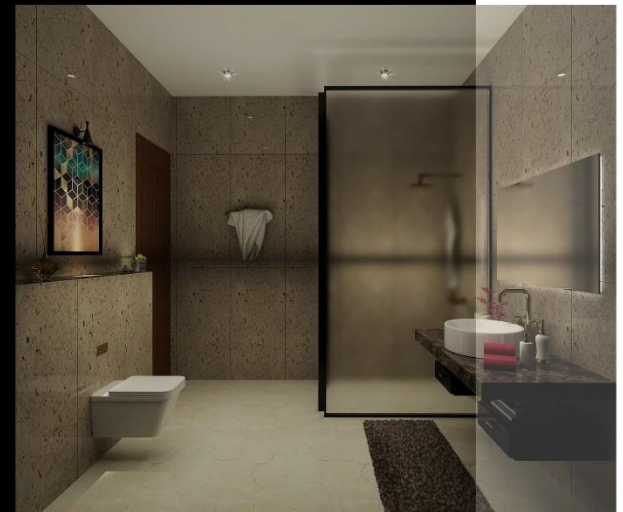
FF Master Bedroom



FF Bedroom 4



FF Bedroom 2

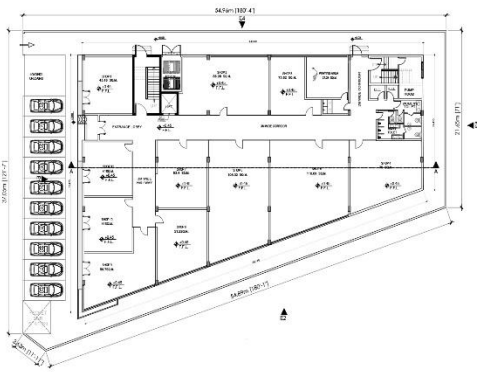


FF Master Bathroom

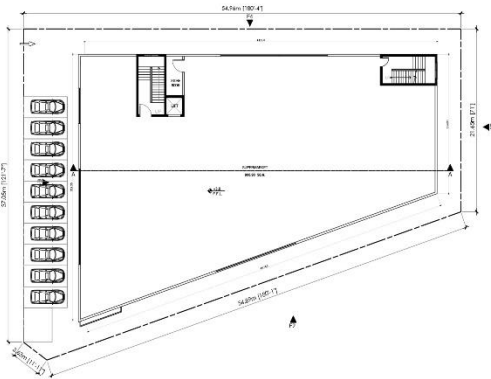


Layout Plan
Landscape Design

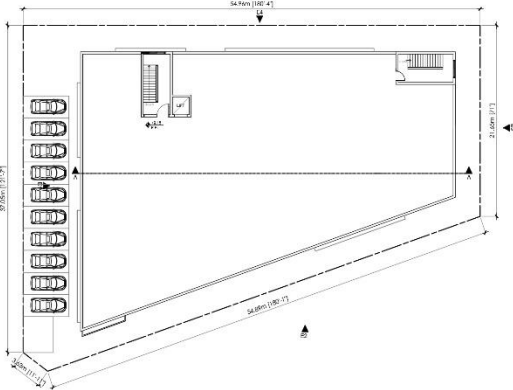




Ground Floor Plan



First Floor Plan



Roof Plan

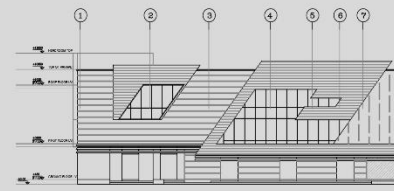
Floor Plans

Project Overview

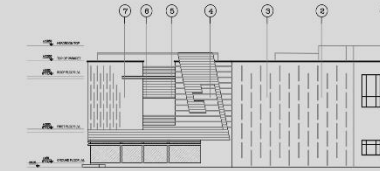
Project Type : G+1

Shopping mall for
West Zone

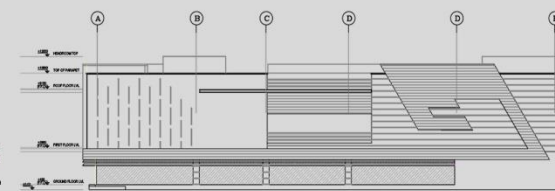
Location : Meeras
Estate, Dubai



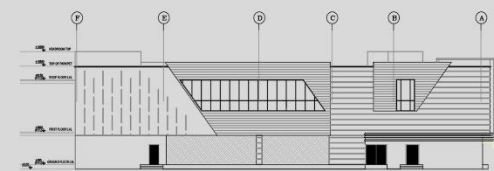
Elevation 1



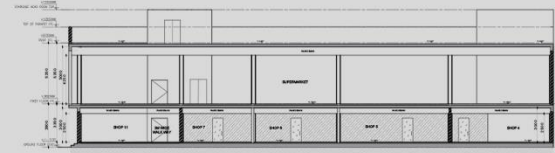
Elevation 3



Elevation 2



Elevation 4



Section

Elevations & Sections



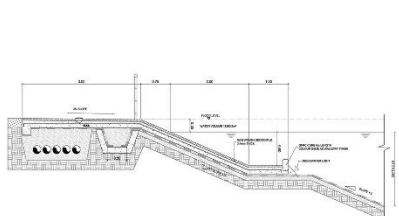
Facade Design Options



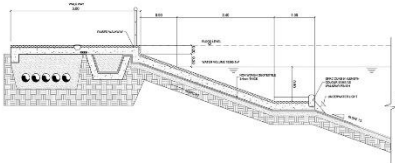


QATAR DESIGN CONSORTIUM, Qatar

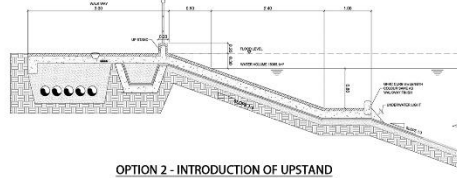
Jan 2016 - Oct 2016



PRESENT CONDITION
STORM WATER STORAGE CAPACITY 3129m³



OPTION 1 - RAISED WALKWAY
STORM WATER STORAGE CAPACITY 4744.9m³



OPTION 2 - INTRODUCTION OF UPSTAND
STORM WATER STORAGE CAPACITY 4744.9m³

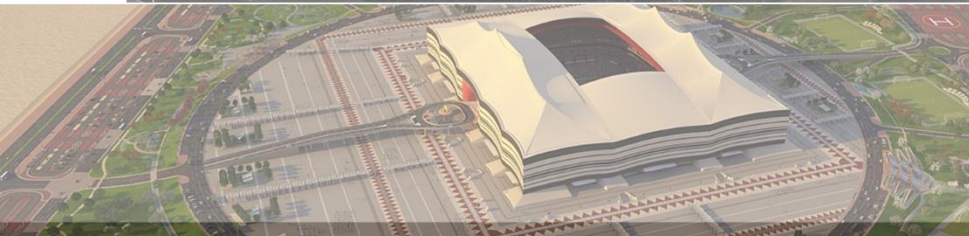


OPTION 3 - INTRODUCTION OF UPSTAND AND REDUCTION IN WATER LEVEL BY 100MM
STORM WATER STORAGE CAPACITY 5658m³

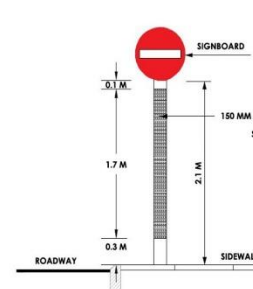


OPTION 4 - INTRODUCTION OF UPSTAND AND REDUCTION IN WATER LEVEL BY 200MM
STORM WATER STORAGE CAPACITY 6602m³

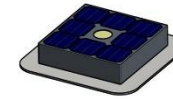
STORMWATER STORAGE STRATEGY



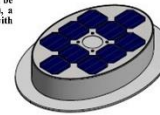
SOLAR POWER GENERATION STRATEGY FOR THE UPLIGHTING OF TREES



Solar poles integrated into traffic signboards present on the site



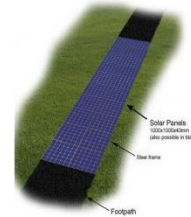
Stand-alone units with a height of 120mm on either side of a tree consisting of a housing, an AMMANU spot SL61 (can be tilted at an angle of 30 degree max.), a control unit, a battery, and a cover with integrated solar cells



Stand-alone units with a height of 130mm on either side of a tree consisting of a housing, an AMMANU spot SL61 (can be tilted at an angle of 30 degree max.), a control unit, a battery, and a cover with integrated solar cells



Solar road sign system for 12 spots/6 trees consisting of template, anchor bolts, battery storage, LED driver and control unit

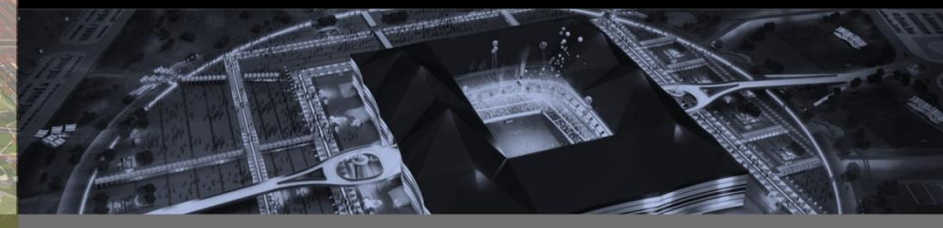
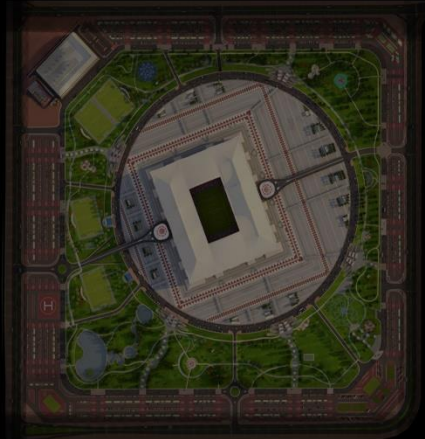


A stretch of photovoltaic cells embedded within safety glass on the pedestrian path that is suitable for pedestrian traffic



Stand-alone units with a height of 650mm on either side of a tree consisting of a housing, an AMMANU spot SL61 (can be tilted at an angle of 30 degree max.), a control unit, a battery, and a cover with integrated solar cells

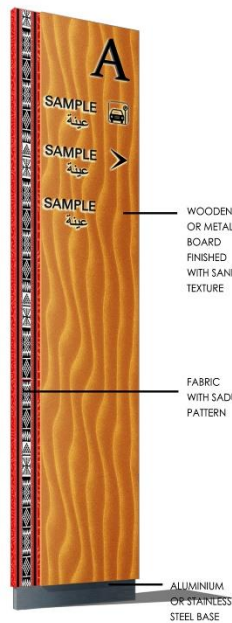
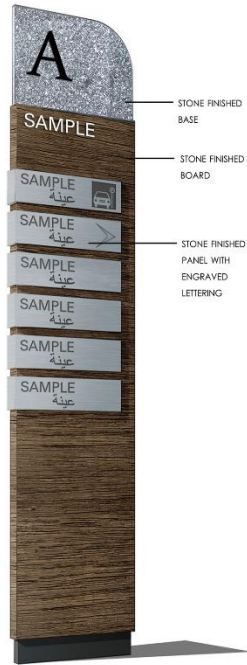
The Al Bayt Stadium, located at the south of Al Khor, approximately 40 km north of Doha, is being developed as one of the venues for FIFA 2020. With a plot area of 1,000,000 sq. m., spaces for commercial and recreational activities have been designed within its precinct to make it a sustainable development even after the event. The stadium will have a capacity to accommodate a maximum of 69,768 spectators and provisions for all related facilities. It shall comply with international norms, design standards and FIFA regulations.



SIGNAGE DESIGN OPTIONS

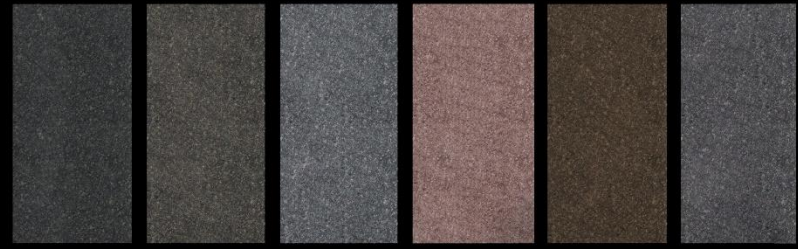


This multifaceted signage design incorporates a combination of TRADITIONAL and MODERN elements that complement the various features of the stadium complex and the surrounding landscape.



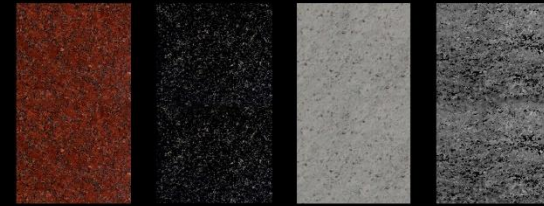
The SADU PATTERN, one of the paramount traditional features of the stadium, has been incorporated in this signage design in an attempt to create one that blends well with the surrounding landscape and the stadium complex.

LANDSCAPE



PORPHYRY NATURAL STONE (GREY) | PORPHYRY NATURAL STONE (GREY BROWN) | PORPHYRY NATURAL STONE (GREY PURPLE) | PORPHYRY NATURAL STONE (RED PURPLE) | PORPHYRY NATURAL STONE (RED RUSTIC) | PORPHYRY NATURAL STONE (VIOLET)

PLAZA



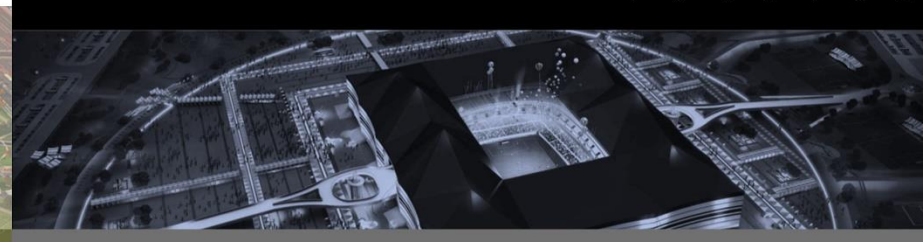
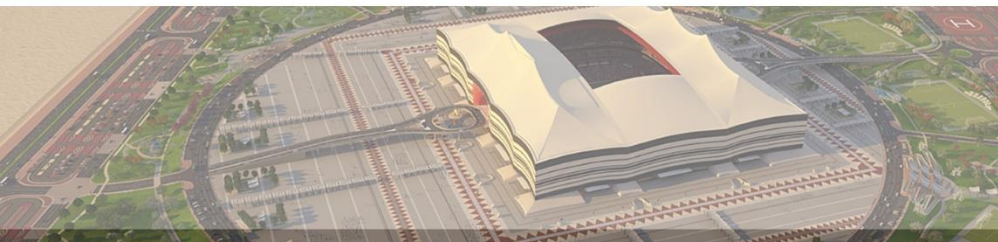
FINE PICKED RUBY RED GRANITE | FLAMED BLACK IMPALA GRANITE | FLAMMATIONED COLONIAL WHITE GRANITE | FLAMED SESAME GREY GRANITE

PARKING



SHOT BLASTED PRECAST CONCRETE PAVERS (TAN) | SHOT BLASTED PRECAST CONCRETE PAVERS (RED) | SHOT BLASTED PRECAST CONCRETE PAVERS (YELLOW) | SHOT BLASTED PRECAST CONCRETE PAVERS (BROWN) | SHOT BLASTED PRECAST CONCRETE PAVERS (BLACK) | SHOT BLASTED PRECAST CONCRETE PAVERS (GREENS)

MATERIAL PALETTE



Al Bayt Stadium - Al Khor, Qatar

Project Overview

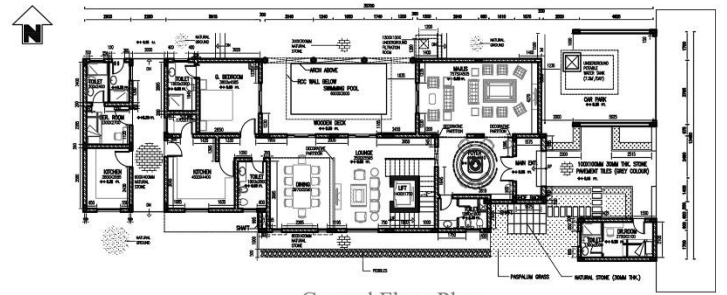
The villa, spread over an area of 570 sq.m. has been designed in an extensive Mediterranean style with Moroccan and Qatari influences. Given the limited size of the plot, our aim was to adopt an effective space maximization strategy.

The two-storey high villa comprising as many as 5 bedrooms provides the occupants with unrestricted views of the 18 sq.m. swimming pool from the ground floor. The spacious abode boasts of a triple height skylight that illuminates the indoor spaces, thus enhancing and accentuating them, besides improving occupant comfort.

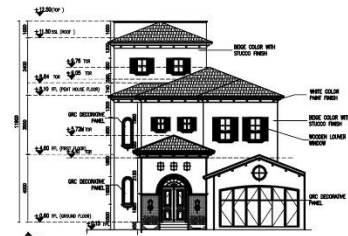
The stucco finished external walls of the villa are fitted with windows that have wooden frames. Warm, earthy colours with a combination of light and dark tones, and pitched roofs covered with cement tiles shaped like the traditional coppo (common roof tile used in the mediterranean region) are some of the features that dominate the external facade.



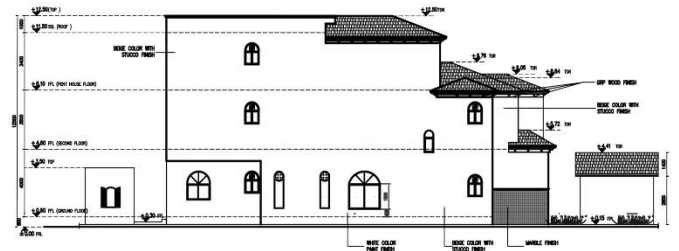
Ground Floor Interior Layout



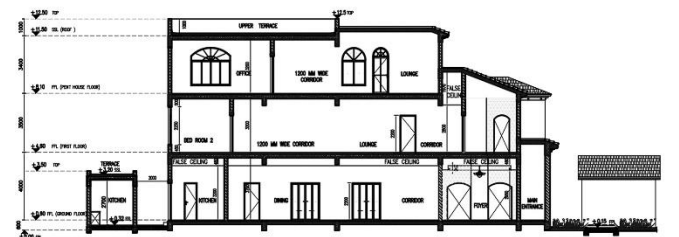
Ground Floor Plan



East Elevation



South Elevation



Section

Plan, Elevations & Section



M I S C E L L A N E O U S



Study Room

Themes : Industrial, grunge



Kitchen

Themes : Modern, scandinavian



Family Area

Themes : Modern, pop art, formal/informal seating,
industrial x contemporary



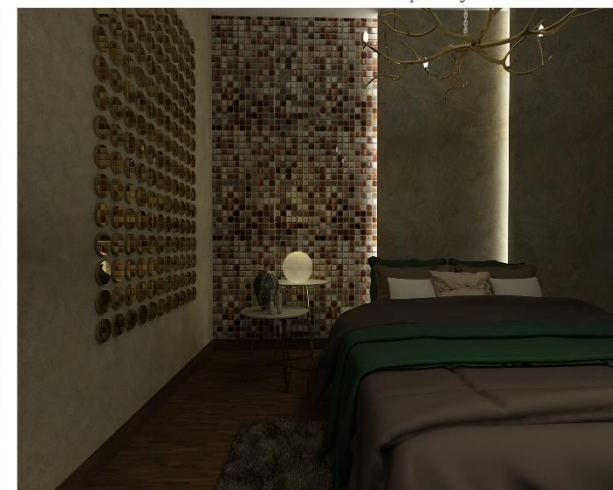
Bedroom

Themes : Industrial, grunge, pop art



Living Room

Themes : Contemporary x classical,
modern luxurious



Bedroom

Themes : modern, elegant, luxurious

Get In Touch

Office No. 203, P.O. No. 274262,
Bullhorns Building, Block B,
Al Ghorouh P. O. No. 119733,
Dubai, UAE

Tel: +974 295914
Fax: +974 295999

Email: kay@kaymanncontracting.com
Web: www.kaymanncontracting.com

KAYMANN CONTRACTING LLC

DIVERSIFIED SERVICES
UNVARYING QUALITY




Kitchen Themes : Modern, scandinavian, with classical accents



Dining Area Themes : Modern, contemporary

ABOUT US

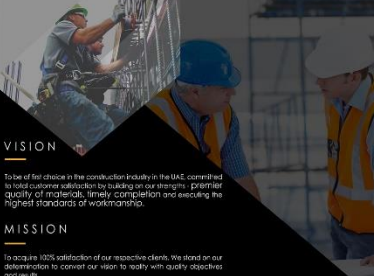
Kaymann Contracting LLC is the UAE chapter of the Dornier Group, known for its pioneering requirements of the construction industry in the UAE. Incorporated in Dubai with a diverse strength of qualified personnel, skilled workforce, plant & machinery & with excellent financial support of Dornier Group, we are fully equipped to deliver our services in the construction industry with a promise of quality, safety & time, apart from General Contracting & EPC projects, under the guidance of Dornier Group, we diversify our services to design & build in industrial, commercial, hospitality, infrastructure & utility sectors as well. We adhere to high professional standards in procurement and construction, with due consideration to quality control, loss prevention and scheduling requirements.

VISION

To be of first choice in the construction industry in the UAE committed to professional excellence by building on our strengths, prioritizing quality of materials, timely completion and seeking the highest standards of workmanship.

MISSION

To acquire 100% satisfaction of our respective clients. We stand on our determination to convert our vision to reality with quality objectives and results.



SERVICES



We offer flexibility in various contracting models, according to the preferences of our esteemed clients.

DESIGN & BUILD

We as one entity provide architectural/engineering and construction services under a single contract. We provide a comprehensive building solution, which includes but not limited to architectural, structural, electrical, mechanical, HVAC, plumbing and sewerage, firefighting and fire protection, building management systems, and infrastructural services. Involving all the above levels, we offering turnkey services, project management and construction services, gives us the tag line "SINGLE POINT SOLUTION PROVIDER".

GENERAL CONTRACTING

General Contracting is a widely accepted contracting model. Under this model, we, as a General Contractor take the onus of a single point responsibility for our esteemed clients and accomplish the completion of the entire step, from design to construction. The specialized services for design and other building services can be finalized by the client or jointly by the General Contractor and the client.


Living Area Themes : Modern, minimal, neutral, high-end



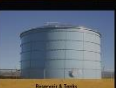






Pooja Unit Themes : Contemporary, luxurious with a traditional touch

ENGINEERING PROCUREMENT & CONSTRUCTION (EPC)

We provide comprehensive engineering, detailed designing, procurement, construction, commissioning and operation of large diameter pipelines, carbon steel ductile iron, cast iron, concrete, oil and gas pipelines, internal and tanks, water and sewage pumping stations, control and instrumentation etc. We provide a cost effective concept design to align with the client's requirements and carry out the detailed engineering, procurement and construction and commission of the project and provide a single window solution to the client.

INDUSTRIES APPLICATION



Living Area



Boy's Bedroom Themes : Modern with industrial accents

Brochure Design
Kaymann Contracting LLC, Dubai



T H A N K Y O U