



PORTFOLIO

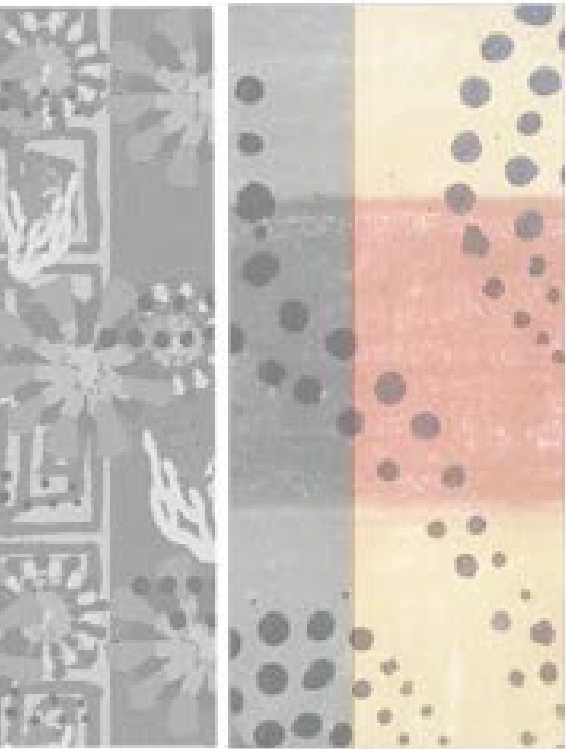
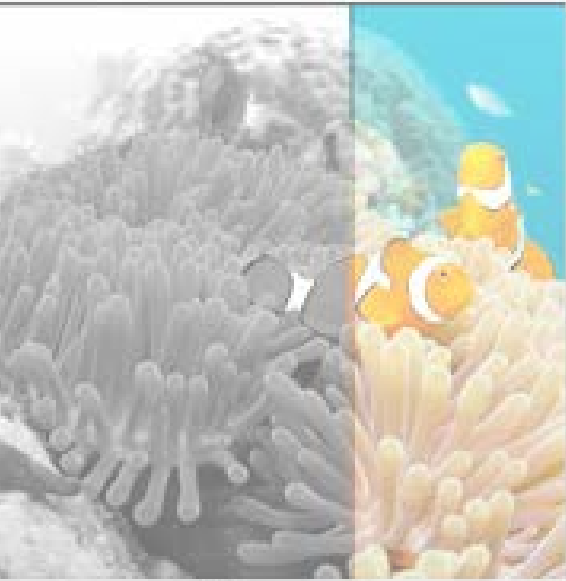
REPALLE SARMYASREE

TEXTILE DESIGNER



PROJECTS

CLASSROOM & NON-CLASSROOM



**DESIGN RESEARCH
TREND & MARKET STUDY
ANALYSIS
DESIGN DEVELOPMENT
PRODUCT VISUALIZATION
& DEVELOPMENT**

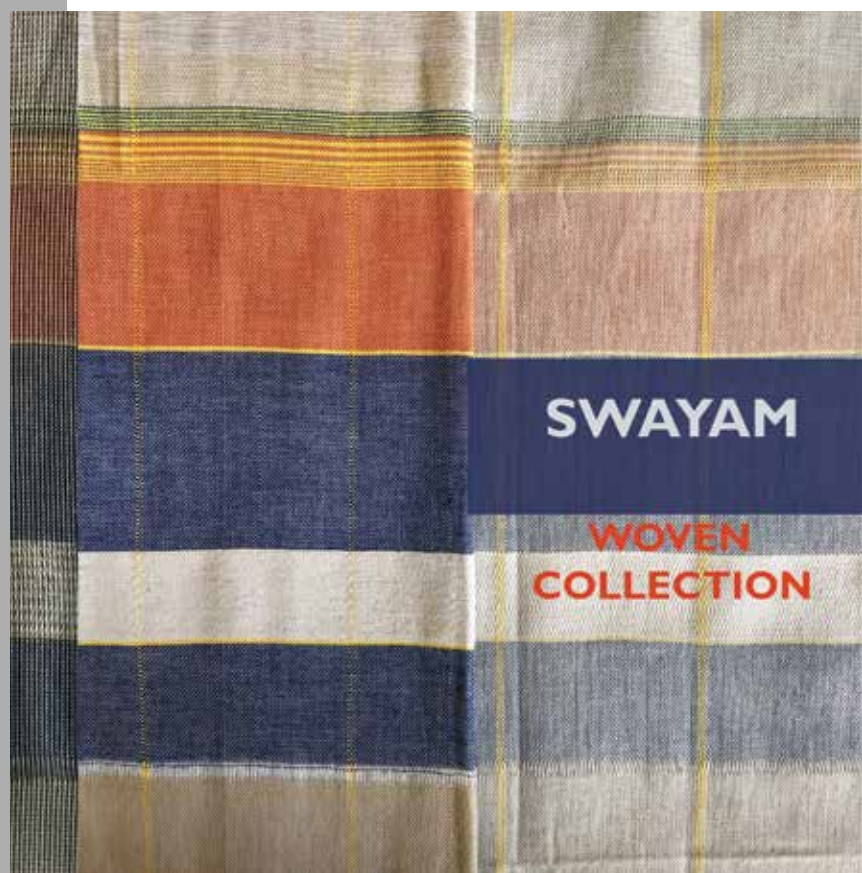




The design development and the implementation of data collection for the products was executed at Daaram. The objectives of this project were to follow design process and develop two collections accordingly.

GRADUATION PROJECT

At Daaram,
Hyderabad





EK02
COST: Rs.680



EK01
COST: Rs.770



EK04
COST: Rs.680



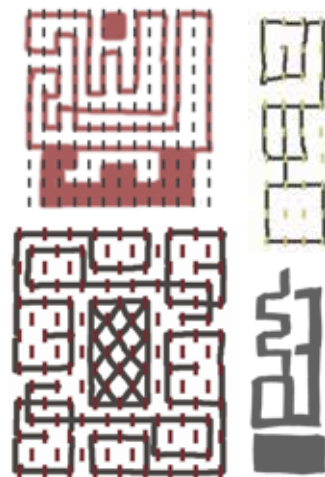
Market segment:
women (age: 25
years and above)
Price range: Rs.
700 to Rs.1300



EK06
COST: Rs.745



EK05
COST: Rs.740



AKSHARM

This collection of hand **embroidered kurtas** for women with lambada embroidery from Sandur, Karnataka, inspired from the script-Telegu language.





SWAYAM



To develop a range of **woven yardages**, using engineering weave technique, wherein the
1. warp yarns are arranged in different ratios and colours to yield different patterns (textured/ stripes/checks/ shot colour) of the fabric **from a single warp**.

2. End use of the fabric: women's Kurtas. (the fabrics are incorporated into different layouts in existing styles of kurtas)



CRAFT CLUSTER PROJECT

KAPDA GONDA

“ An entire new world, a new experience and fantastic point of view no one to tell us no or where to go”

This project was done at the village **KHAJURI** in Odhisa.






“ Dongaria kondh (the tribe) art and craft reflected the importance of the mountains to their community- the triangular shaped designs are painted on the walls as well as embroidered on the colourful shawls that they wear”.

A rare collectors' textile, women of the community **embroider** their creation myth on thick **handwoven shawls** in bright vivid colours depicting their dongars (hills) and feilds. They beleive in giving back to nature as much as they take from nature.



Design Interventions seen as an interface between traditional and modernity, that matches craft production to the needs of the market.



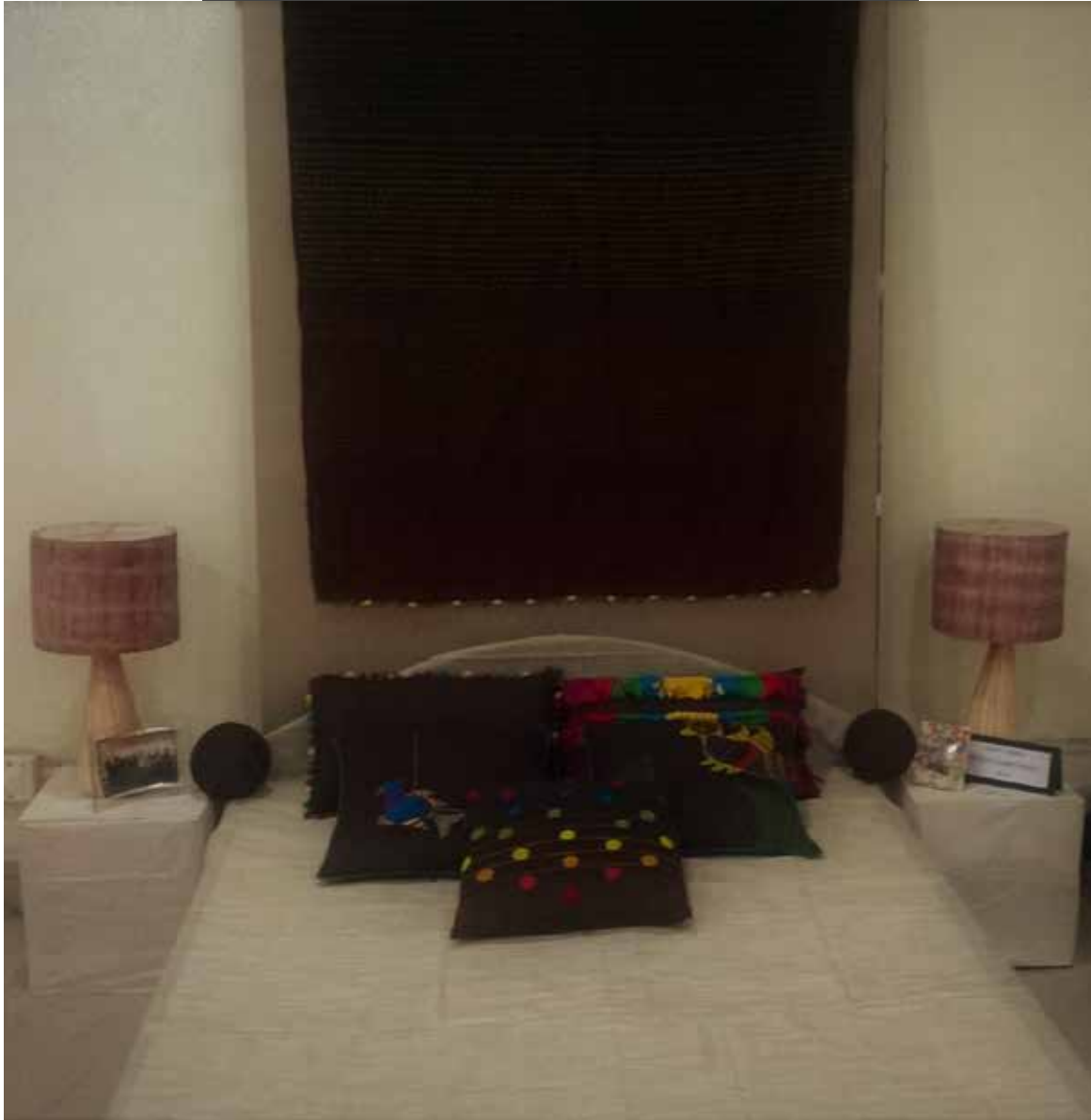


The designed and developed products are a collection of cushion covers - 12" x 12" (1 peice); 16" x 16" (2 peices); Bolster covers-31" (width) x 29.5" (circumference)



Kurtis (4)-hand embroidered respectively.

DESIGN SUTRA 2016



The collection is being made, taking the inspiration from **Gond art**. The key words are “**signature patterns**”- used to infill the designs and “**bright colours**”, which thereby are the main elements of this collection.

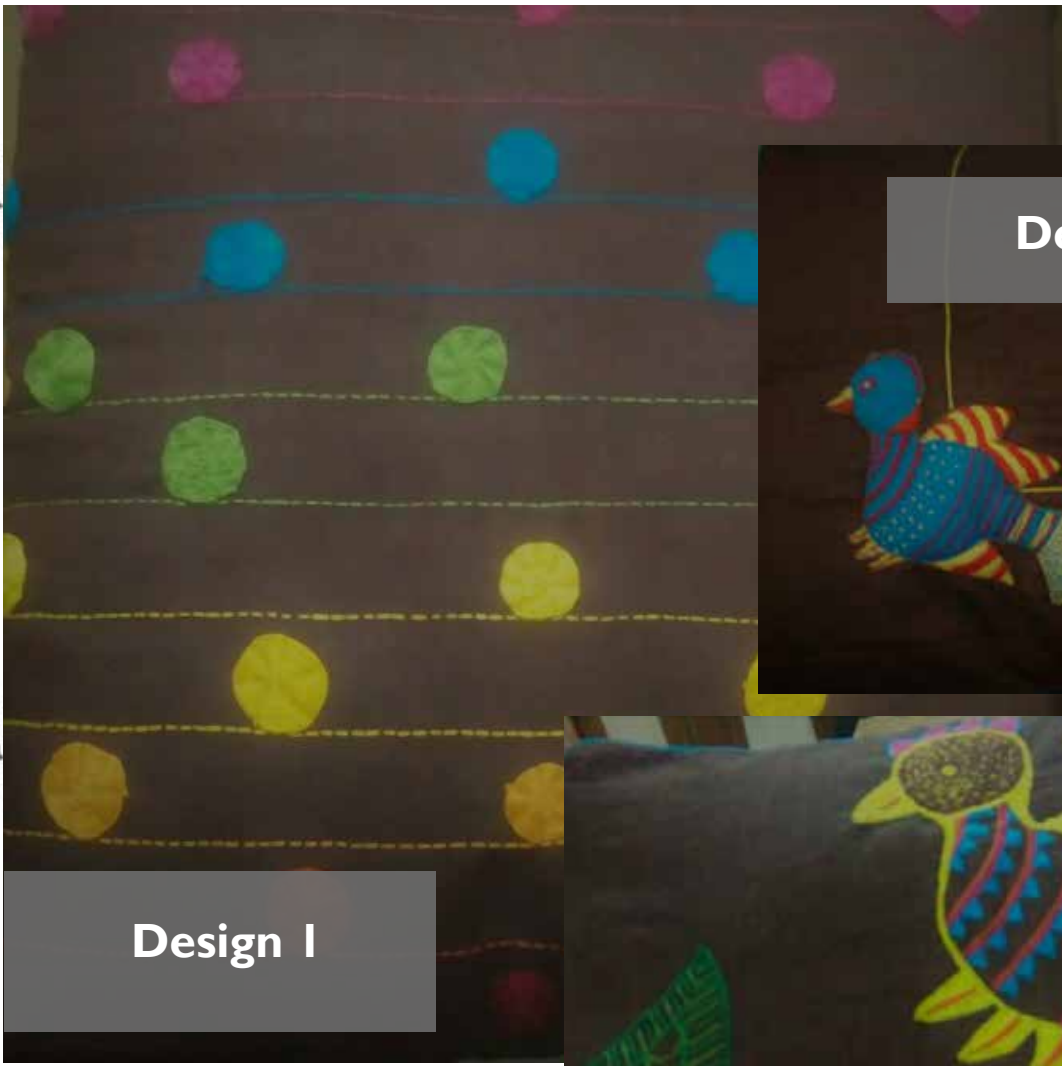
TECHNIQUES

The **signature patterns** have been replaced with **embroidery stitches** as well as other surface techniques such as Appliqué and Tie-dye are observed.

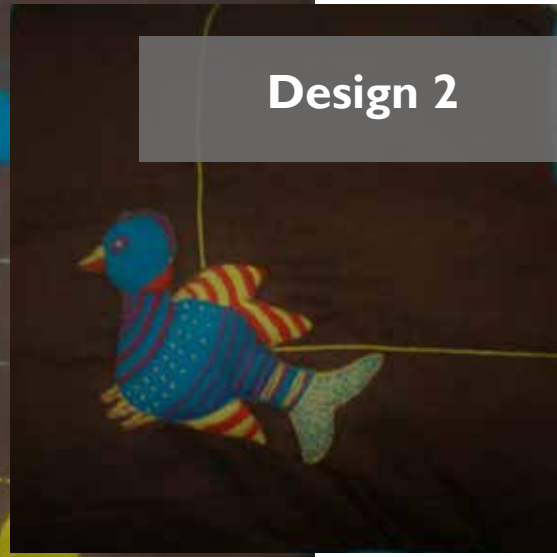
The various embroidery stitches used are:

1. Running stitch
2. Satin Stitch
3. Blanket stitch
4. Chain stitch
5. Couching
6. French knots





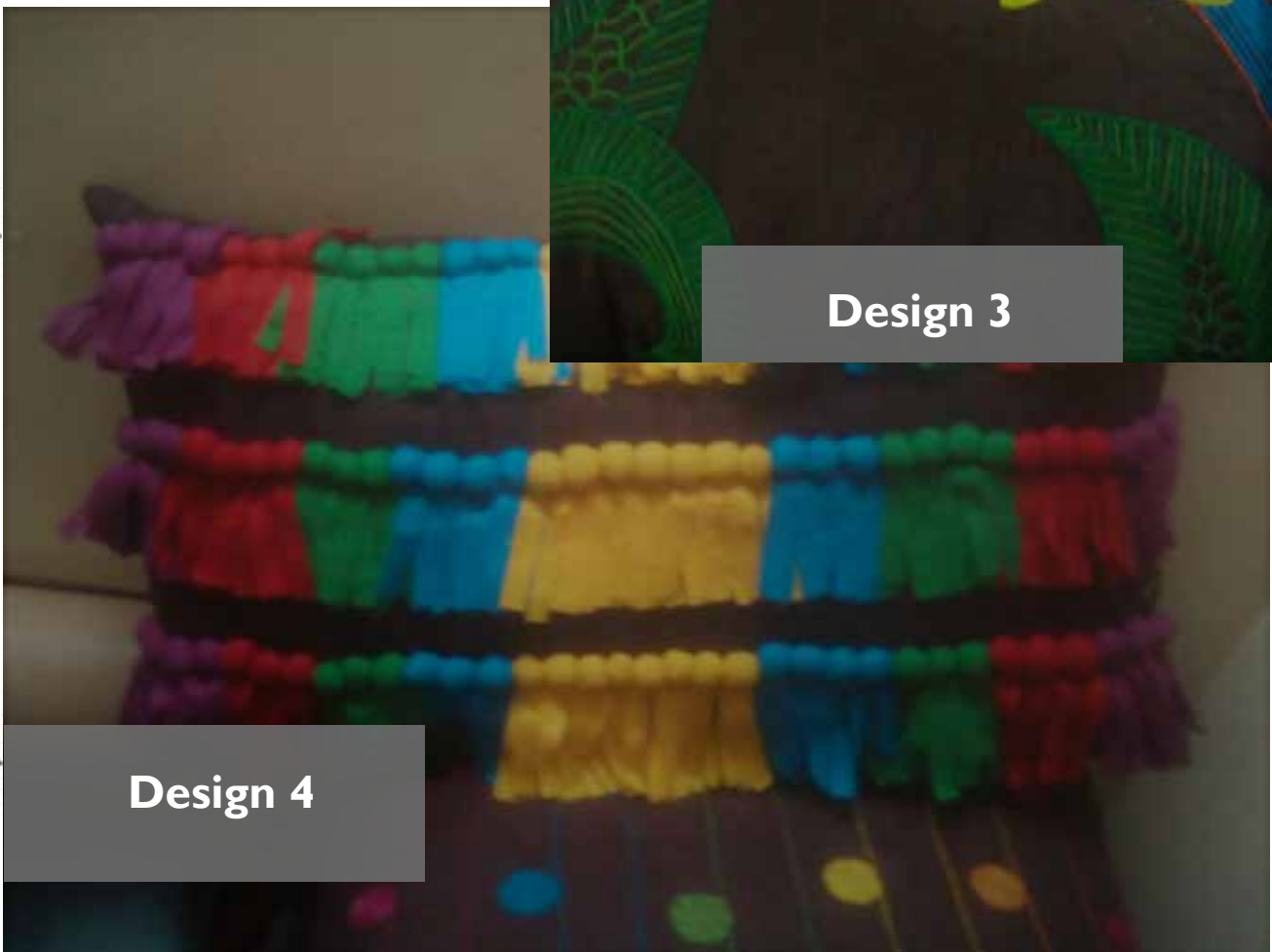
Design 1



Design 2



Design 3



Design 4



NATURE'S CAVE
INSPIRATION BOARD



NATURE'S CAVE
THEME BOARD

NOURISH

NATAL

ENERGIZE

REFRESHING

VIVID



NATURE'S CAVE
COLOUR BOARD

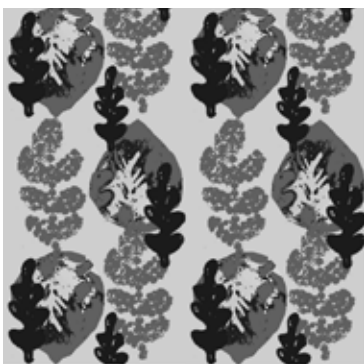
PANTONE 553C

PANTONE 617C

PANTONE 7544C

PANTONE 626C

PANTONE 4975C



CRAFT DESIGN PROJECT

NATURE'S CAVE

Design development for **Jacquard weaving** technique as well as **treadle weaving**.

Concepts developed from forms and textures of leaves.

Category: Woven yardages for **living linen collection**.

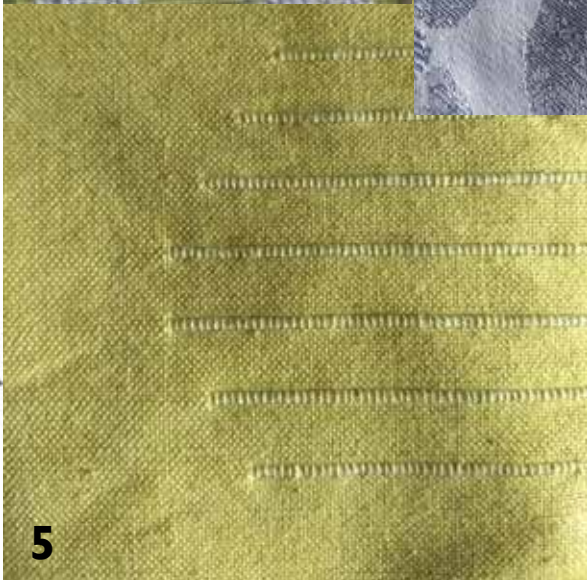
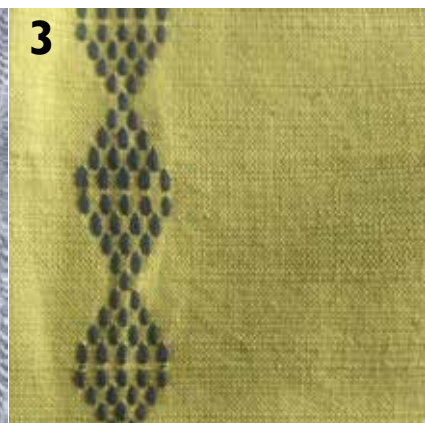
Products: Range of curtains and cushion covers.

Market segment: Chentex (chennimalai weaver's corporative society)





Design 1 & 2
Jacquard designs



Design 3, 4 & 5
Treadle designs

5

3

4

Design 3, 4 & 5
Treadle designs



WOVEN DESIGN PROJECT



To develop a range of fabrics to reduce the printing process in order to revive the handloom and powerloom crafts of Karur.

To develop woven swatches, using **colour and weave** technique, warp yarns arranged in different ratios-**block drafting, straight and pointed drafting methods**; to produce different effects for the Mallow international market.

Designs translated to the loom with the aid of **specification sheet** which includes fabric details like warp and weft count; weave used; design graph; lifting order; drafting and denting order; weight of the fabric.

SPECIFICATION SHEET

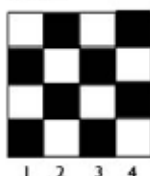
DESIGN NO: I
 PRODUCT: Coaster
 WEAVE USED: Plain weave
 COUNT: WARP: 2/20^s WEFT: 2/20^s
 REED : 40 REED SPACE: 42.4 (40+2.4)
 COVER FACTOR: 6 %
 FABRIC WIDTH: BODY: 12" ; SELVEDGE: 0.25"
 TOTAL NUMBER OF ENDS:

No. of ends in the body + No. of ends in the selvedge
 = [(40 + 2.4) × 12] + [(20/2) × 4]
 = 509 + 40
 = 550 ends

ENDS PER INCH: 40 PICKS PER INCH: 22

NUMBER OF SHAFTS: 4

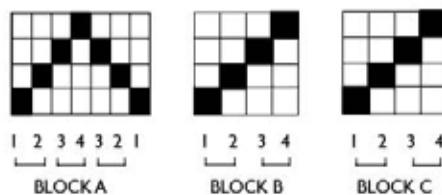
GRAPH:



LIFTING ORDER:

1 3
 2 4

NUMBER OF BEAM USED: Single
 DRAFTING PLAN: Pointed and Straight



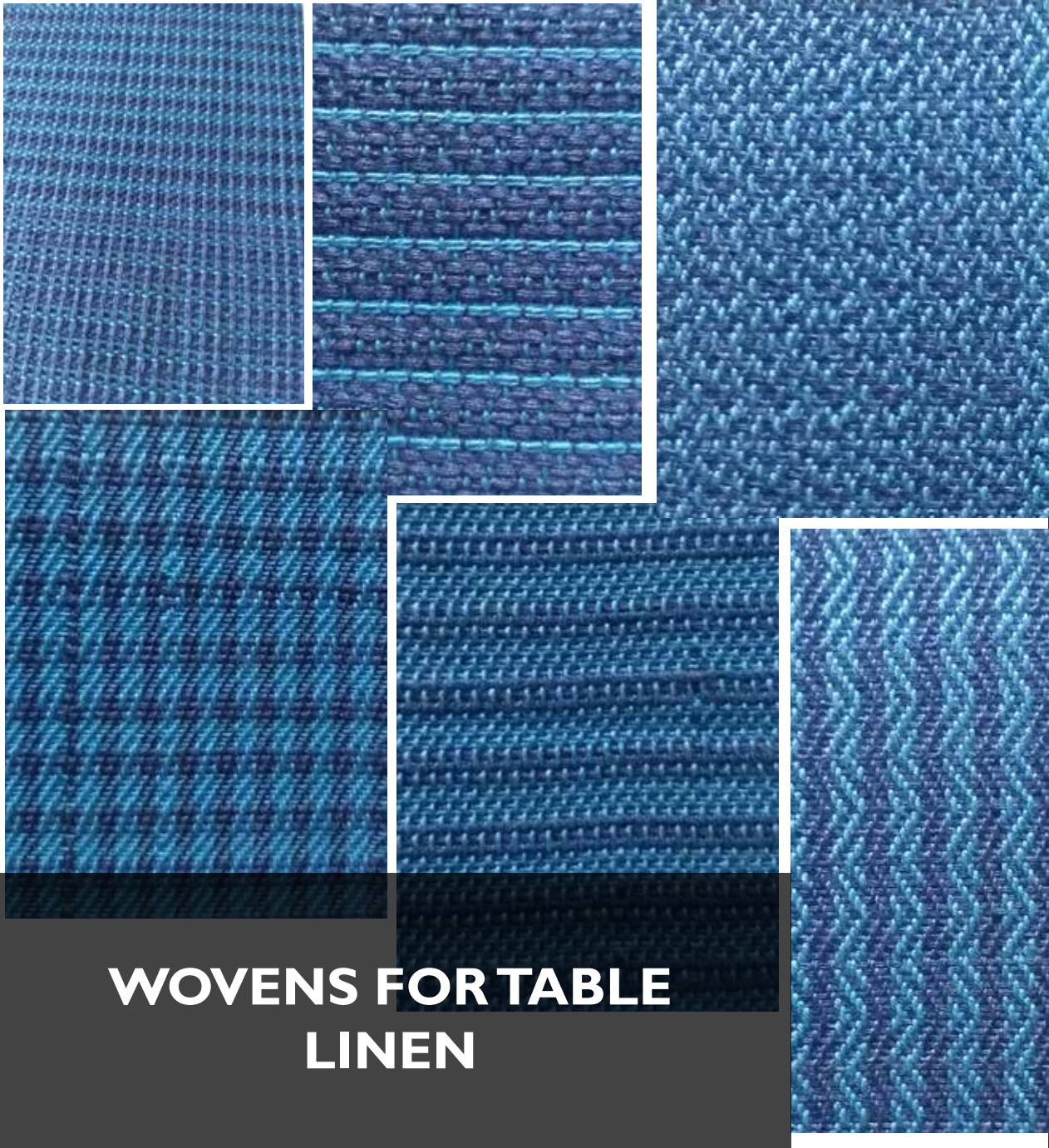
WARP PATTERN: [Light colour (L)- ■ ; Dark colour (D)- ■]

Order of colour of yarn	No. of ends	No. of times	Total	Drafting	Denting
A. 2L 2D	12	1	12	1, Pointed	2
B. 6L 6D	12	1	12	1, Straight	2
C. 1L 1D	4	1	4	1, Straight	2

WEFT PATTERN:

Order of colour of yarn	No. of picks	No. of times	Total
1. L	2	22	66
2. D	2	22	66
3. L	2	22	66

WEIGHT OF THE FABRIC: Weight of the warp + Weight of the weft
 = 6 + 0.3
 = 6.3 gms/m



WOVENS FOR TABLE LINEN



COASTER
DIMENSION: 4" x 4"



TABLE CLOTH
DIMENSION: 60" x 84"



PLACE MAT
DIMENSION: 12" x 18"



TABLE RUNNER
DIMENSION: 12" x 45"



BREAD BASKET
DIMENSION: 8.23" x 8.23"



EXPLORATORY WEAVING



Incorporation of observable textures onto the fabric using the technique- **WEAVING**

TEXTURE
OUTER SHELL
OF A SNAIL

Material exploration-
Possible materials are collected for weaving to create the swatches.





IMITATION INLAY



**Block
drafting**

**4
Blocks**

**Multiple
wefts**

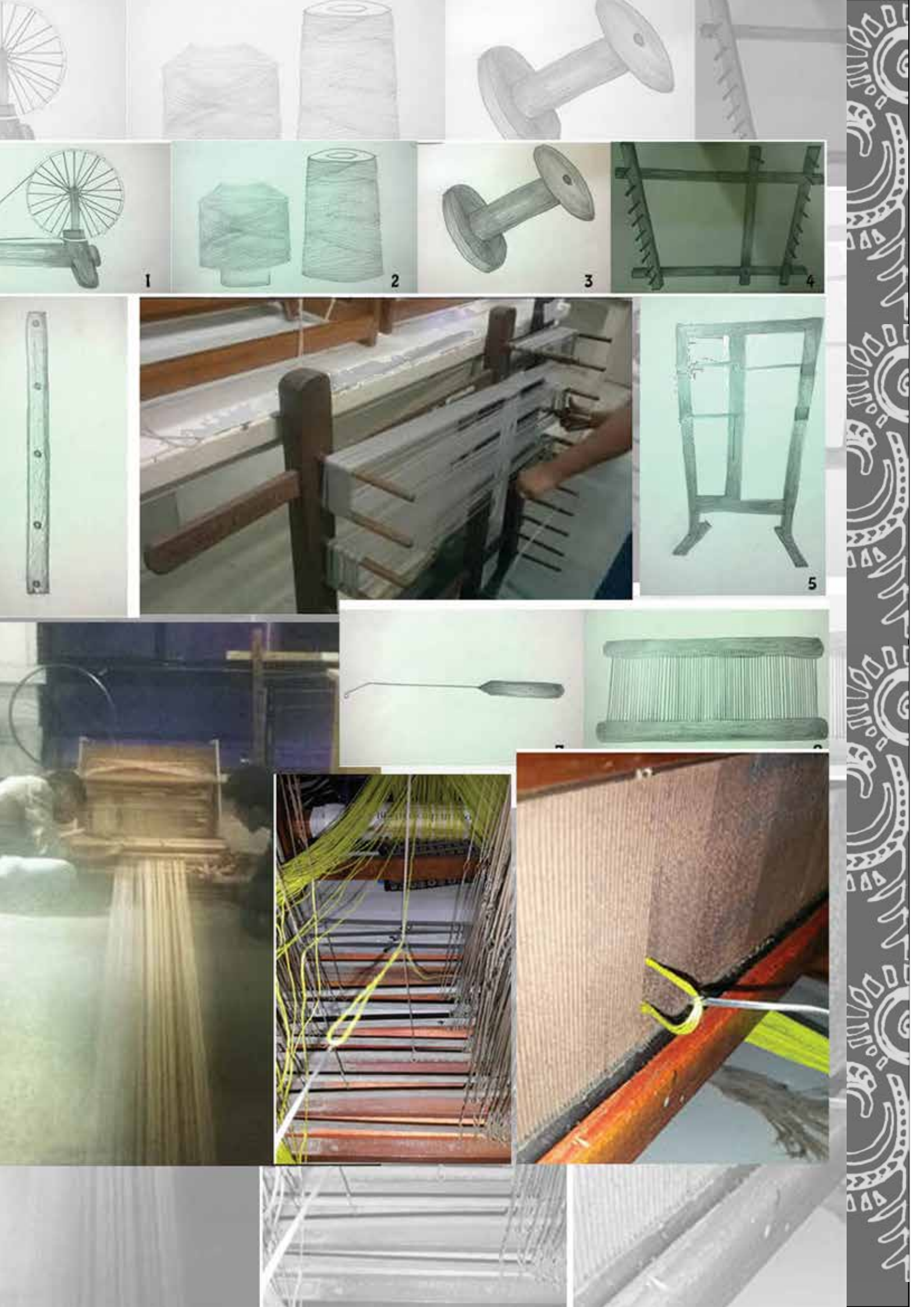
**Warp yarn
count:
10s Ne**

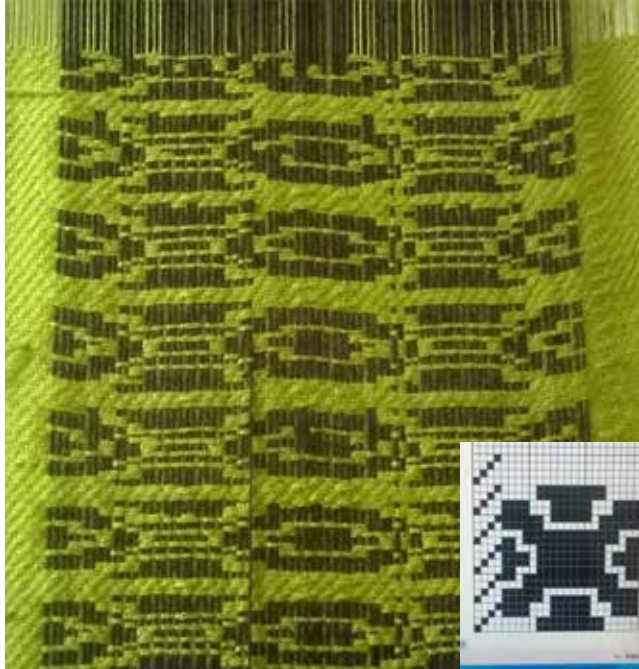
**Weft:
Acrylic
yarns**





BASIC WEAVES





*“Drafting order
decides the design
factor in a
woven fabric”*

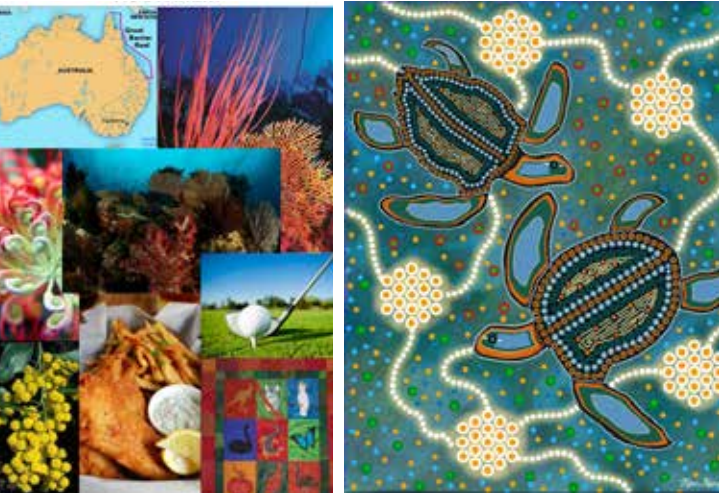
BLOCK DRAFTING

**DOUBLE CLOTH-
CHECKS or STRIPES**

**DOUBLE CLOTH-
WADDING**

EXTRA WARP





SURFACE DESIGN PROJECT

RAKSHA

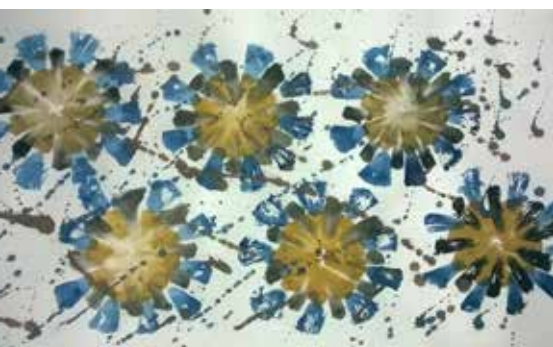
Print design is a project that deals with developing prints (design surfaces).

Surfaced is a new concept design house based in Melbourne Australia. It is about to launch designs into the international **quilting market**. The exhibition at Melbourne highlighted the important history of quilts in Australia.

Surfaced is looking to produce a range of designs (a collection) which have a uniquely **Australian feel with distinct theme or concept**. Their market is the younger consumer interested in making her own quilts

Concept: Various human activities have disturbed the ecosystem of the Great Barrier Reef, due to which few species have become endangered. Thus, protect the endangered species.

“To protect the endangered species of Great barrier reef”



CONCEPTS



P
R
I
N
T

D
E
S
I
G
N

D
E
V
E
L
O
P
M
E
N
T



**SCREEN
PRINTING**



SURFACE DESIGN DEVELOPMENT



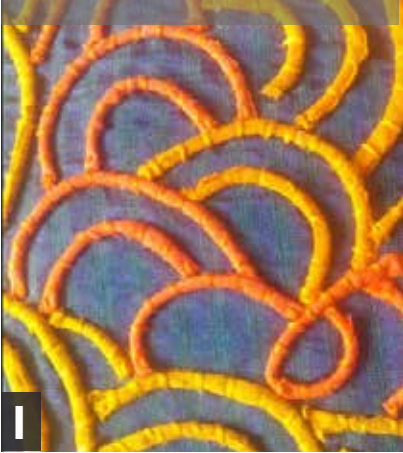
This project deals with implementation of **surface techniques** on to different products.

A **bed linen collection** comprising of:

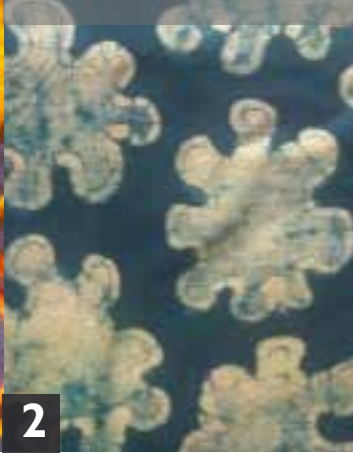
2 cushions- 16" x 16";
1 throw- 12" x 24";
2 pillow covers-
46cm x 70cm;
bedspread-60" x 90";
Quilt- 60" x 90"



**Couching
using fabric**



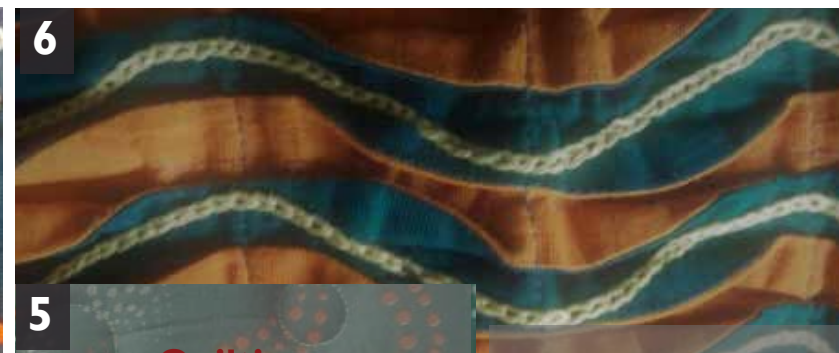
Batik



**Screen printing,
Embroidery-Running
stitch**



**Appliqué,
Reverse appliqué
& French knots**



Quilting

**Patchwork,
Undulated
tucks,
Embroidery-
chain stitch**

“Imagination is the beginning of creation”

Elements of design Textile design techniques

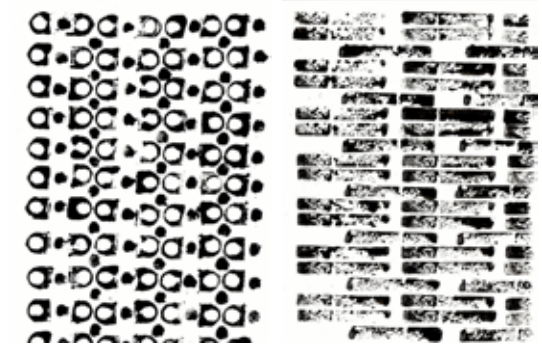


**INITIAL CONCEPTS
MEDIUM & MATERIAL
EXPLORATIONS**

**VISUALIZATION:
3D MAPPING**

STENCIL PRINTING





ARANYA
INSPIRATION BOARD

ARANYA
COLOUR BOARD

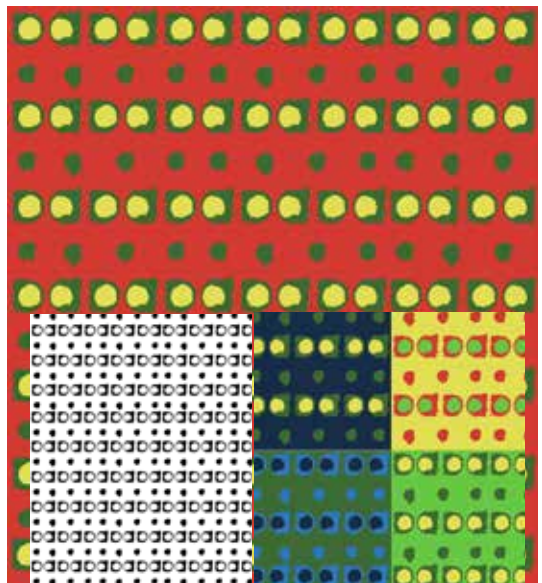
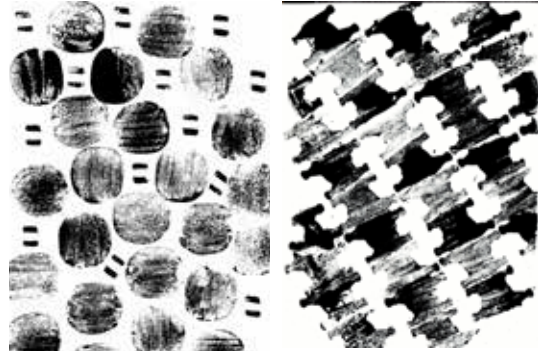
PANTONE 111C PANTONE 7626C PANTONE 7488C PANTONE 7488C PANTONE 3935C PANTONE 3135C

SPECIFICATION SHEET

DESIGN NO - RS01
DESIGN NAME - FLAMBOYANT
MOTIF SIZE - 4.73 cm x 4.83 cm
REPEAT SIZE - 21 cm x 29.7 cm
NUMBER OF COLOURS - 4

PANTONE 7626C	PANTONE 7488C
PANTONE 7488C	PANTONE 3935C

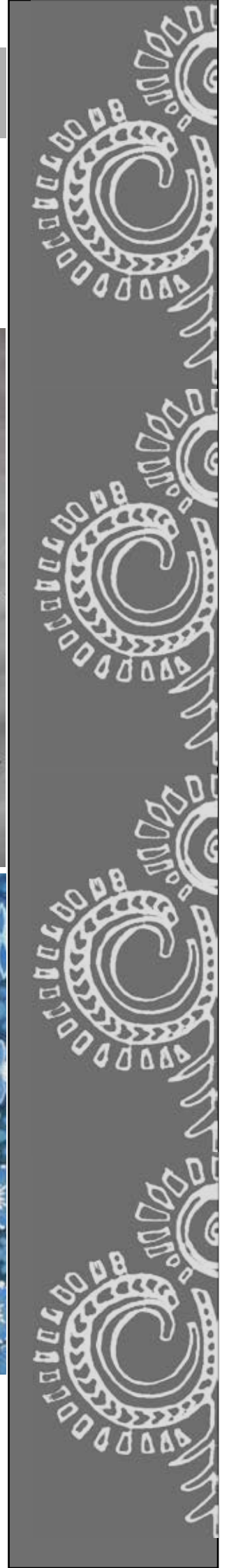
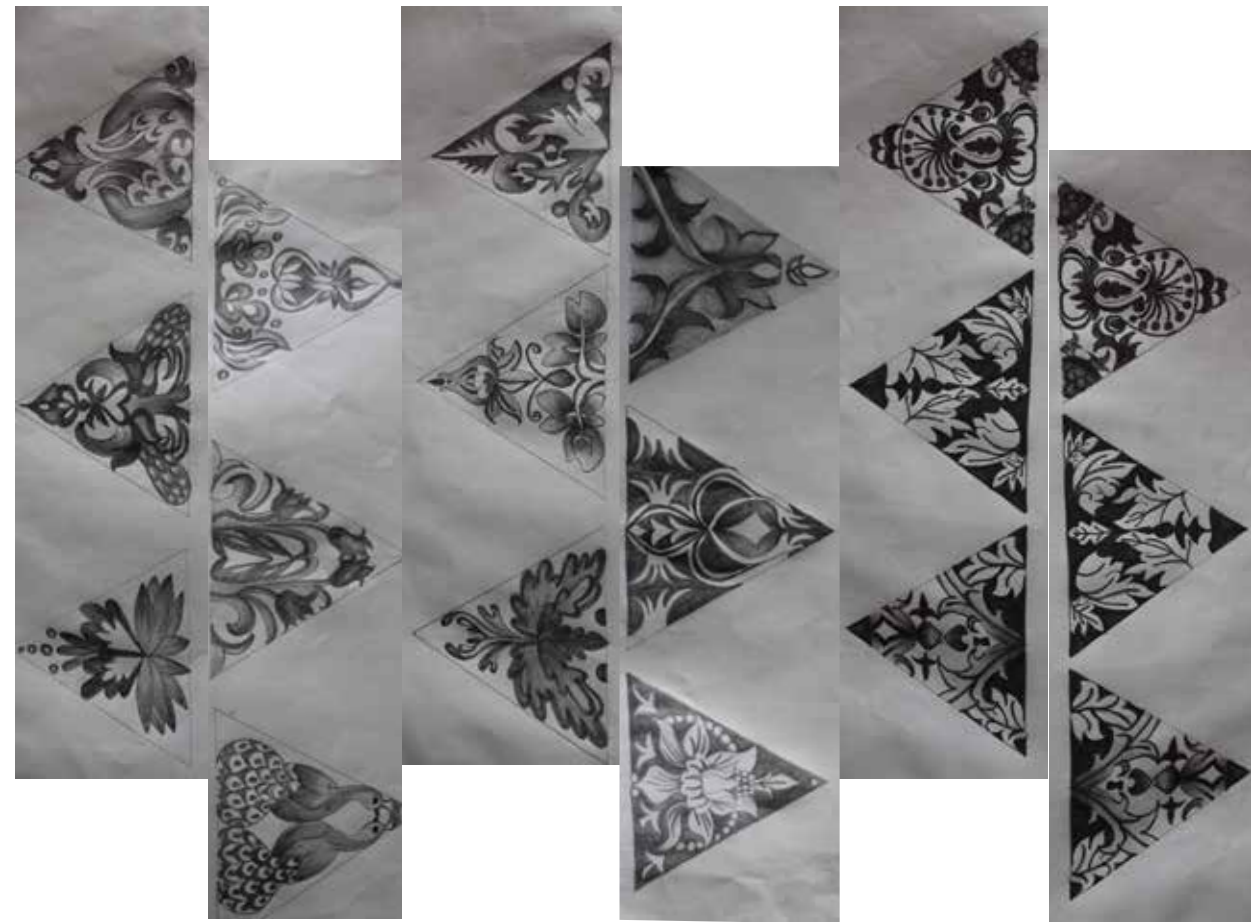
COLOUR WAYS



**IMPRESSIONS-SURFACES
REPEAT DEVELOPMENT
COORDINATES
COLOURWAYS**

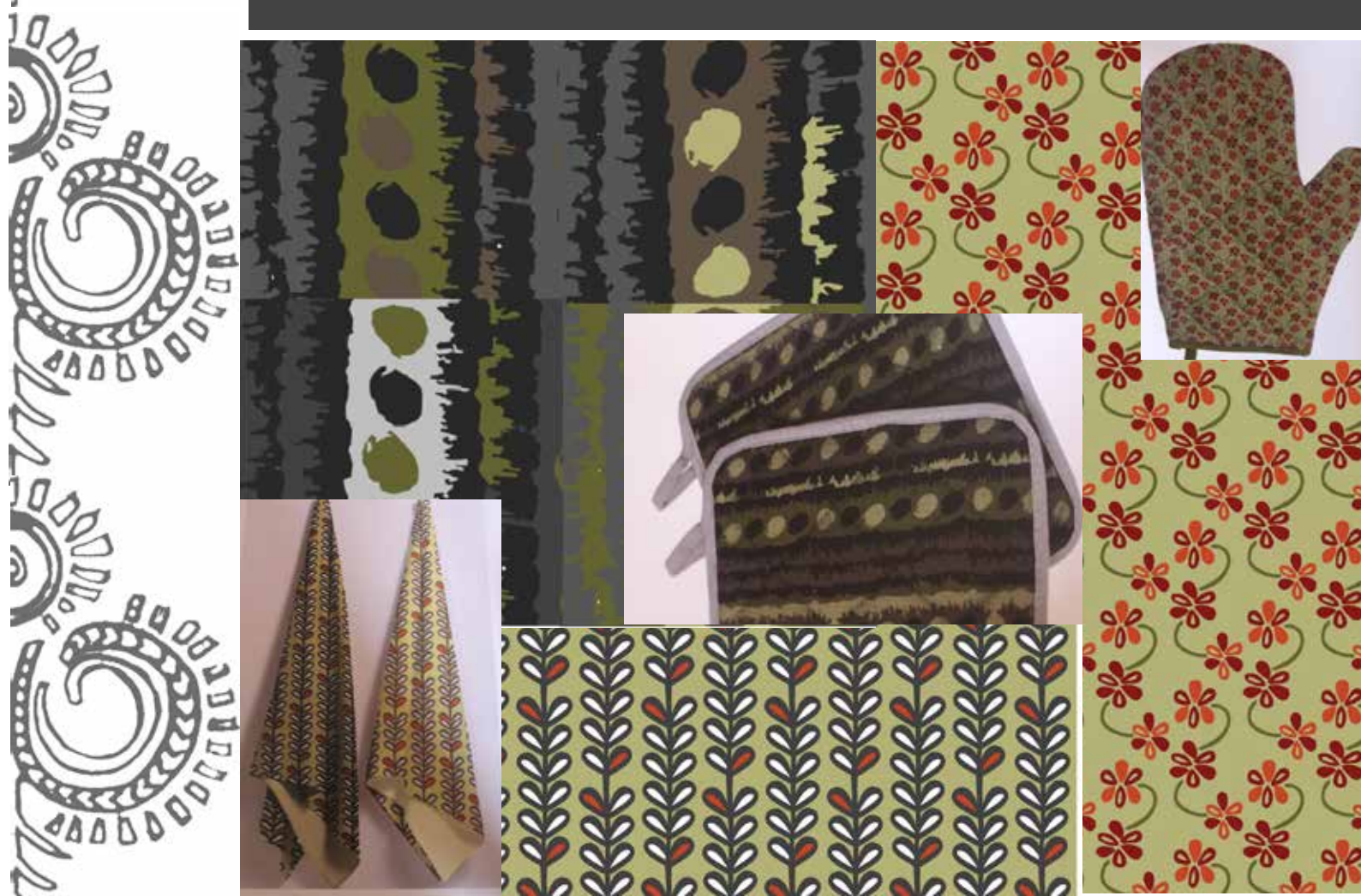
PRODUCT DEVELOPMENT

Knowledge of Repeats





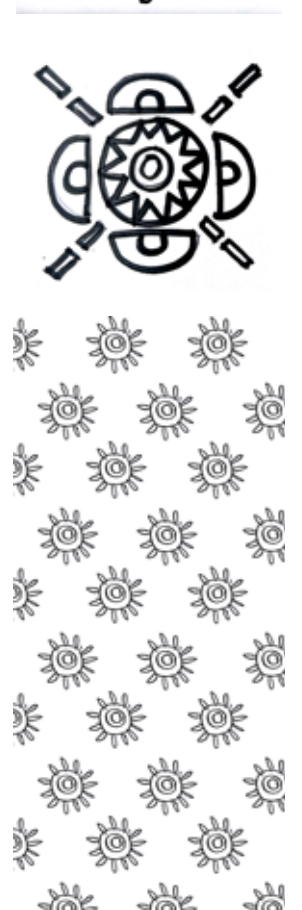
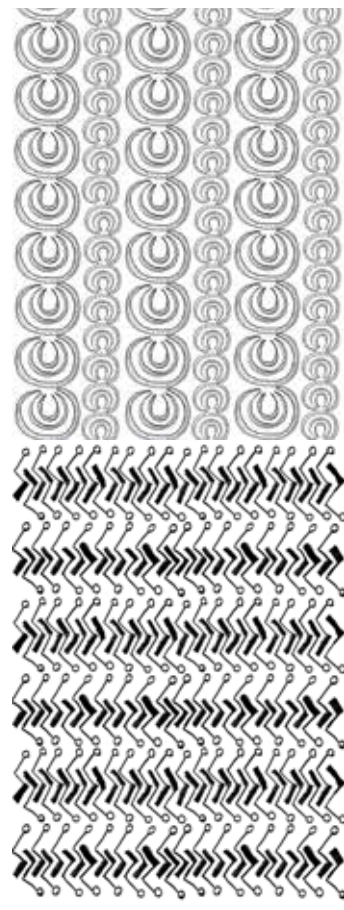
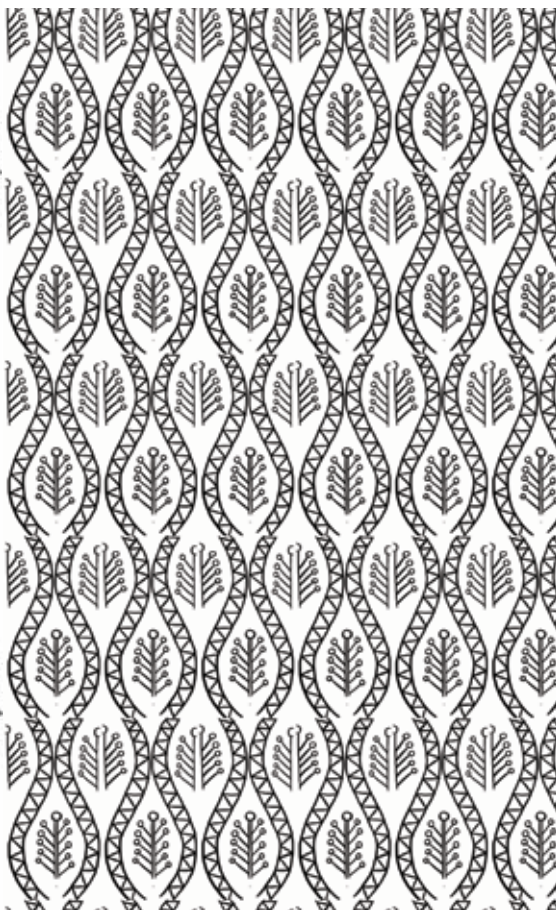
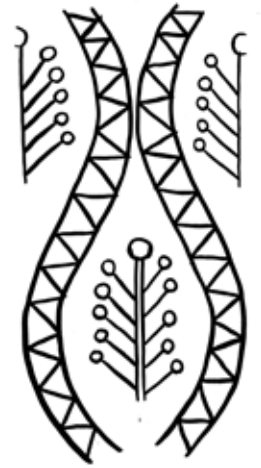
Repetition of elements to bring visual appeal of Unity or rhythm or consistency in a design.





**ADVANCE
DESIGN
PROJECT**

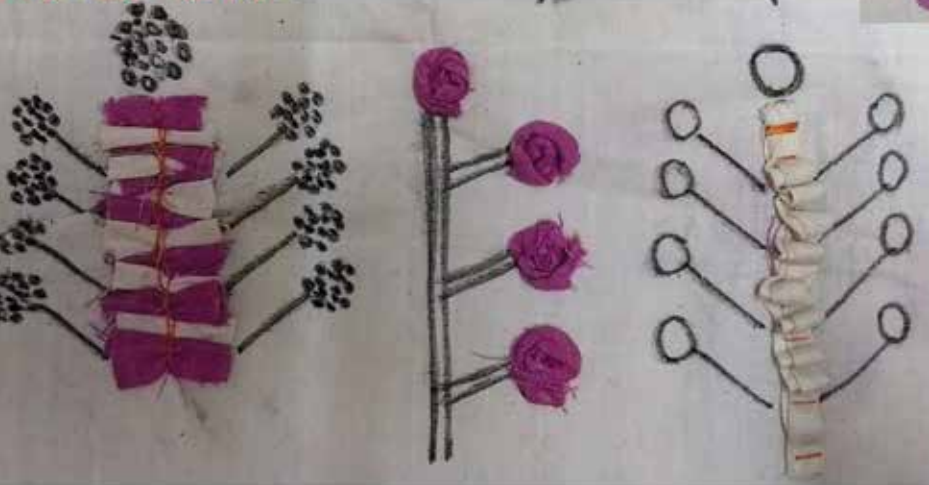
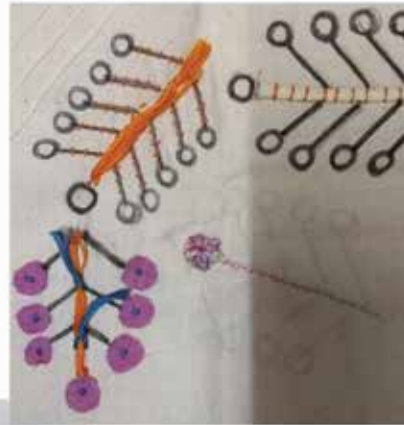
KRIYASHILA





Machine embroidery

Surface technique- fabric manipulation from any one of the explorations below



(Either the stem or buds are highlighted)

Techniques:

1. Couching
2. Embroidery-button stitch
3. Running stitch over the small stem
4. Applique

MATERIAL EXPLORATION



Overall design is screen printed, no. of screens used would be 3; one for background and 2 for foreground.

Also the centre circle is highlighted either by applique with french knot or embellished with fake mirror or shell buttons.



Block printing

Couching

Applique: Fabric strips are fold into half, like a "V" shape and attached to the base fabric with a "running stitch".


The strips are left unfinished.



Screen printing


Embroidery: The lines are emphasized by running stitch, with leaving extra thread on both the sides. The thread would be as the same colour of the print.





Kriyashila is a concept, looking at producing a range of designs which have **traditional look represented in a disrupted manner**. Also this collection would have a feel for **contemporary home**.

To produce a range of Home furnishing fabrics, inspired from the tribe: Dongaria kondh, Odisha.



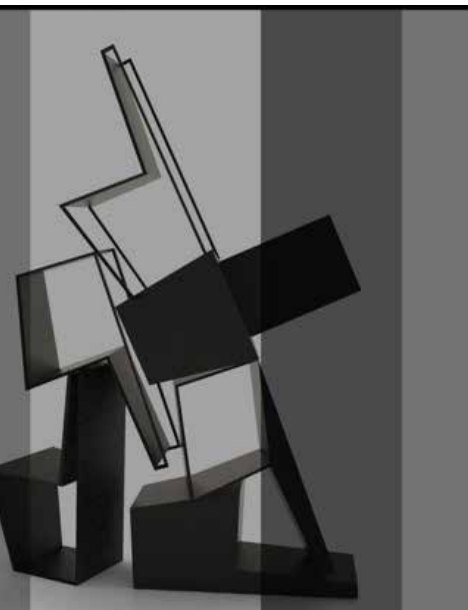


SPACE DESIGNING

(Fabric, product styling)

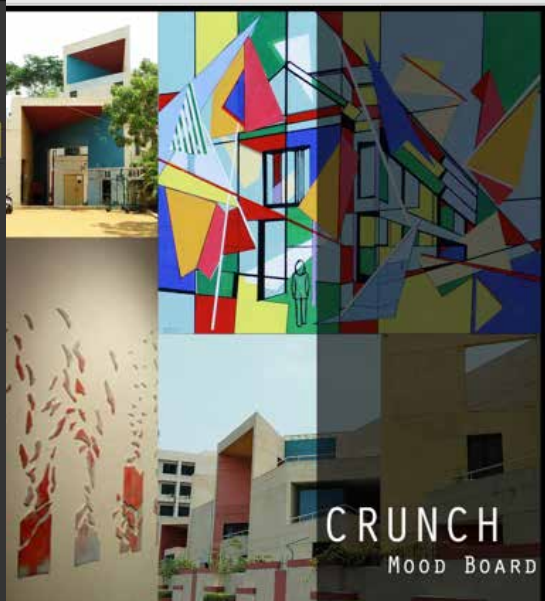
PRODUCT-WALL ART

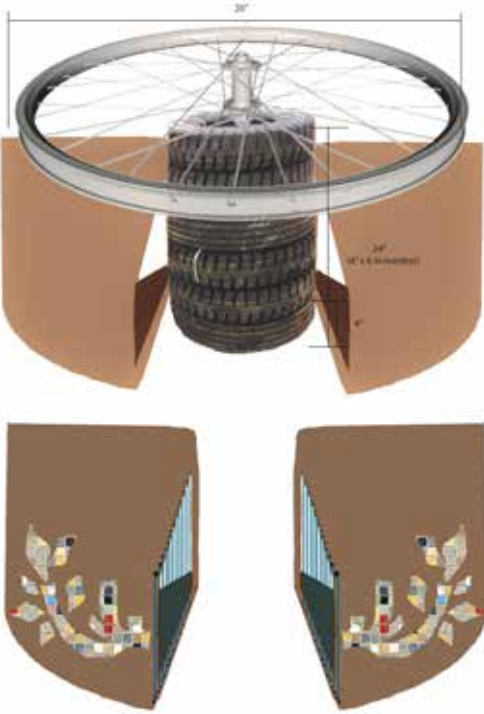
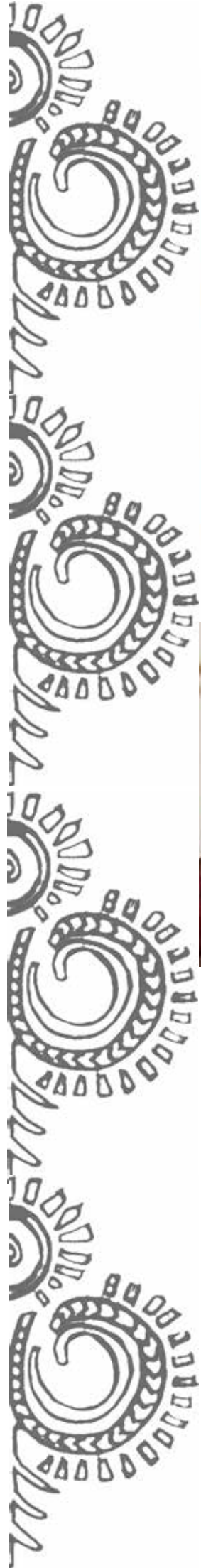
THE CONCEPT OF DECONSTRUCTIVISM IS CARRIED FORWARD TO STYLIZE THE SPACE- CAFE INTERIORS



CRUNCH
THEME BOARD

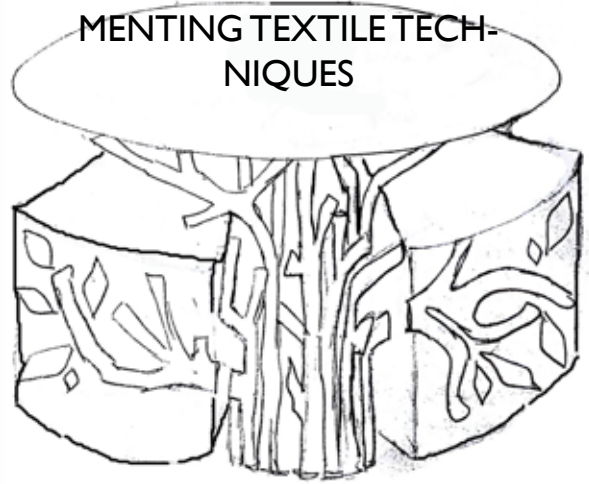
- RIGID
- GEOMETRIC
- FICKLE
- MULTIPLE
- FRAGMENT





PRODUCT-TEA TABLE

MADE UP OF RECYCLED MATERIALS WHILST IMPLEMENTING TEXTILE TECHNIQUES





**VISUALIZATION AND
REPRESENTATION**





*“Implementation of learning appropriately
& Gain more knowledge through
Experience”*

