

ARCHITECTURAL
PORTFOLIO



At a job interview: "What are your strengths?"

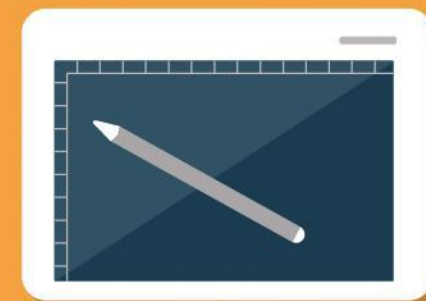
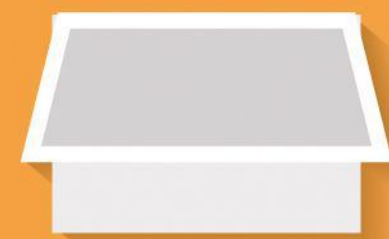
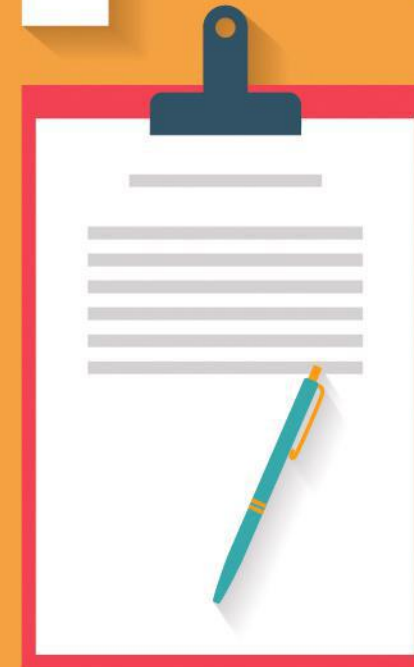
"I'm an optimist and a positive thinker."

"Can you give me an example?"

"Yes, when do I start?"

SIVARAM . B | IV YEAR | BATCH 2013 -2018 | DR.MGR UNIVERSITY
ramshiva63@gmail.com | [9659463162](tel:9659463162) | [facebook.com/ramshiva63](https://www.facebook.com/ramshiva63)

Designer WORKPLACE



IDEATE
VALIDATE
CELEBRATE

BASIC DESIGN \$
MANUAL WORKS



BEACH
RESORT



URBAN
DESIGN



APARTMENT
DESIGN

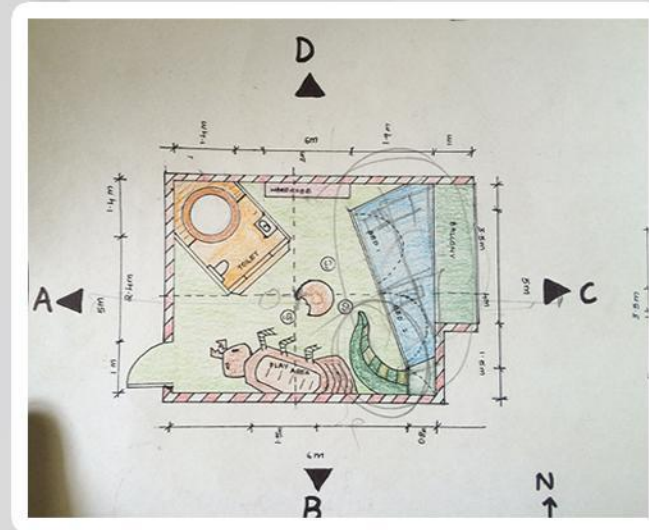


ARTWORKS &
C.V

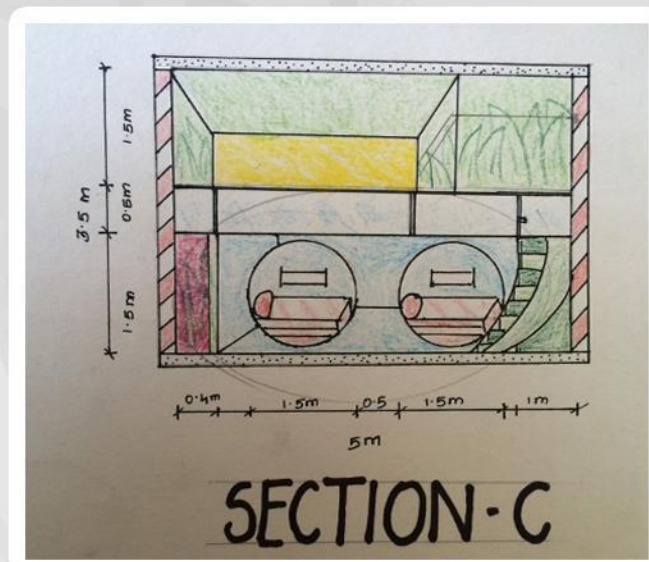
TABLE
OF
CONTENTS



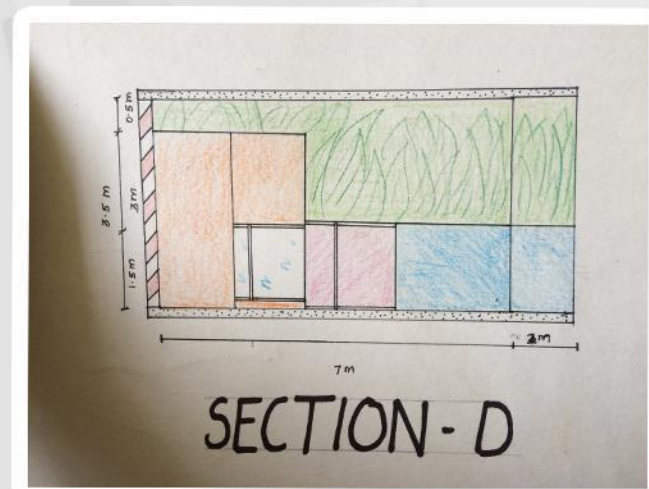
HIGHWAY
RESTAURANT



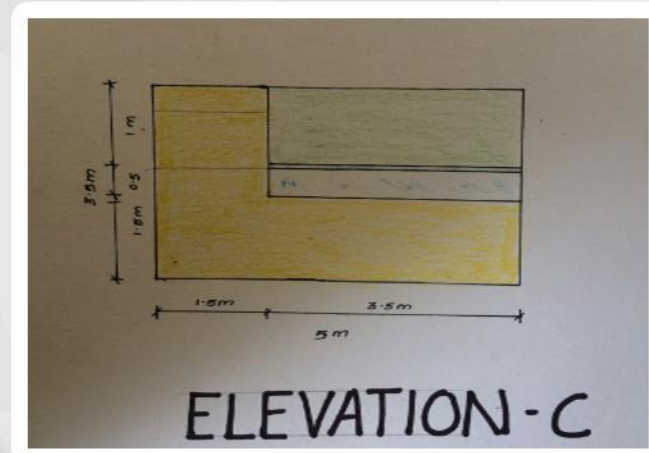
KIDS BEDROOM



SECTION - C



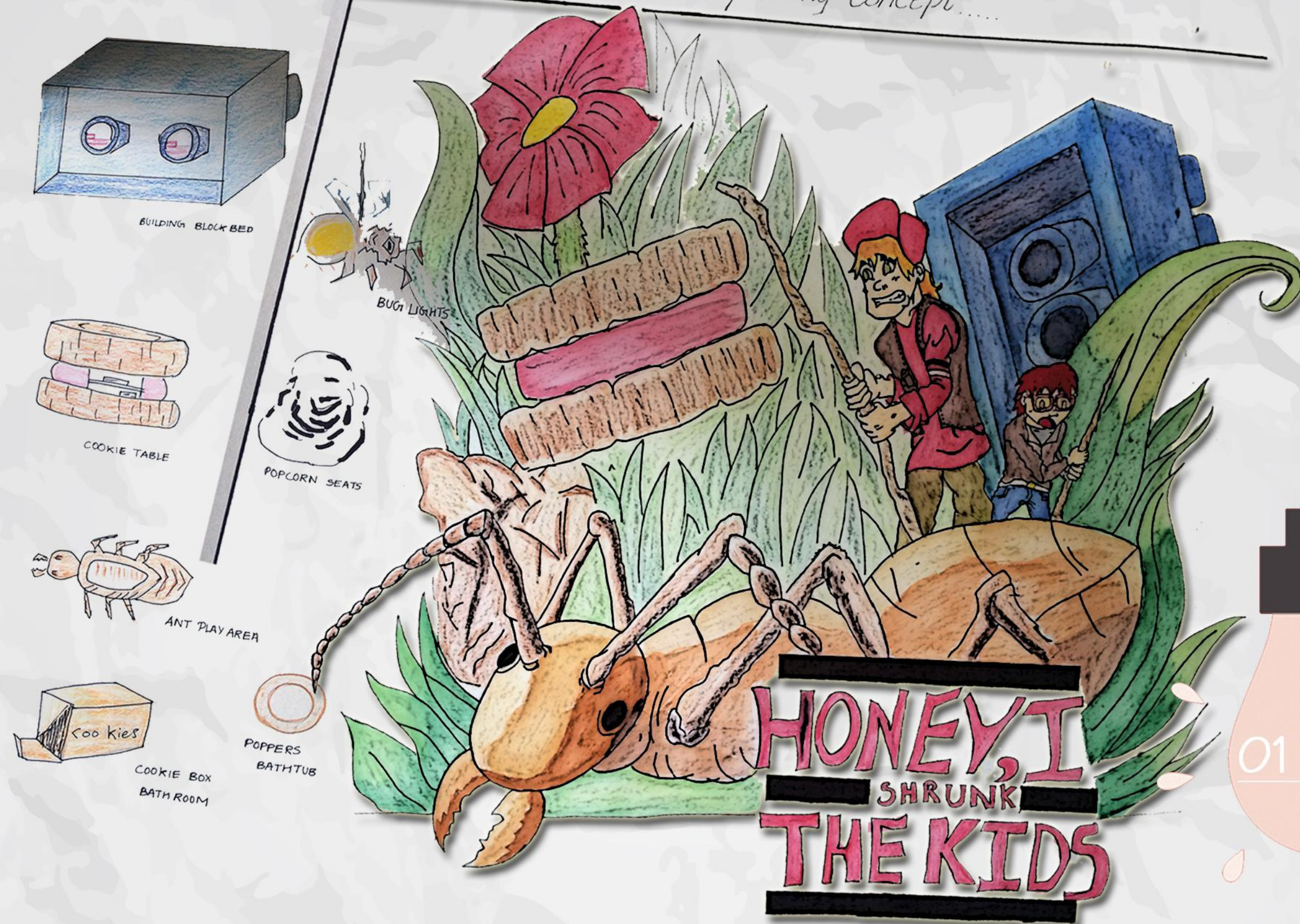
SECTION - D



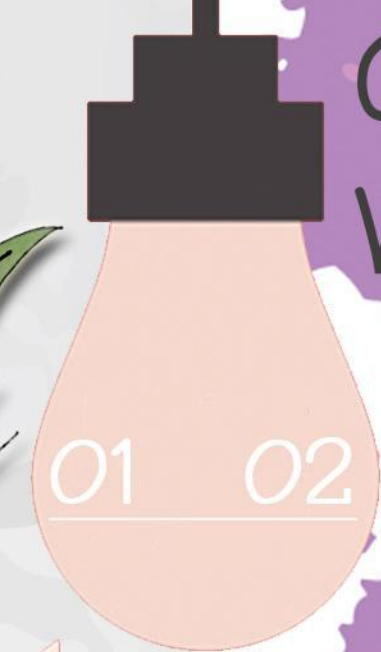
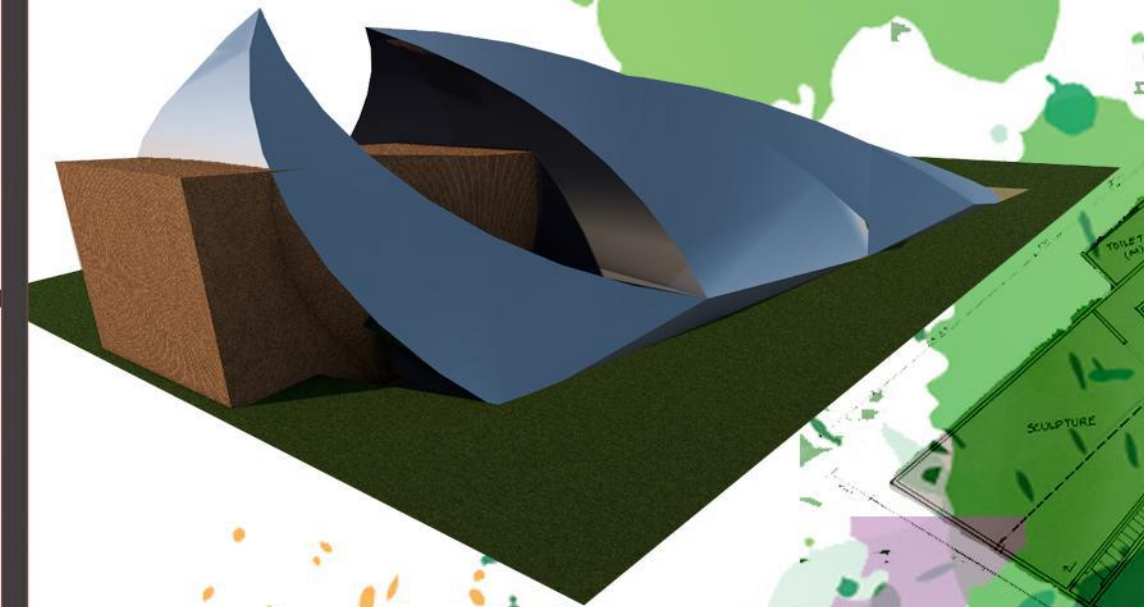
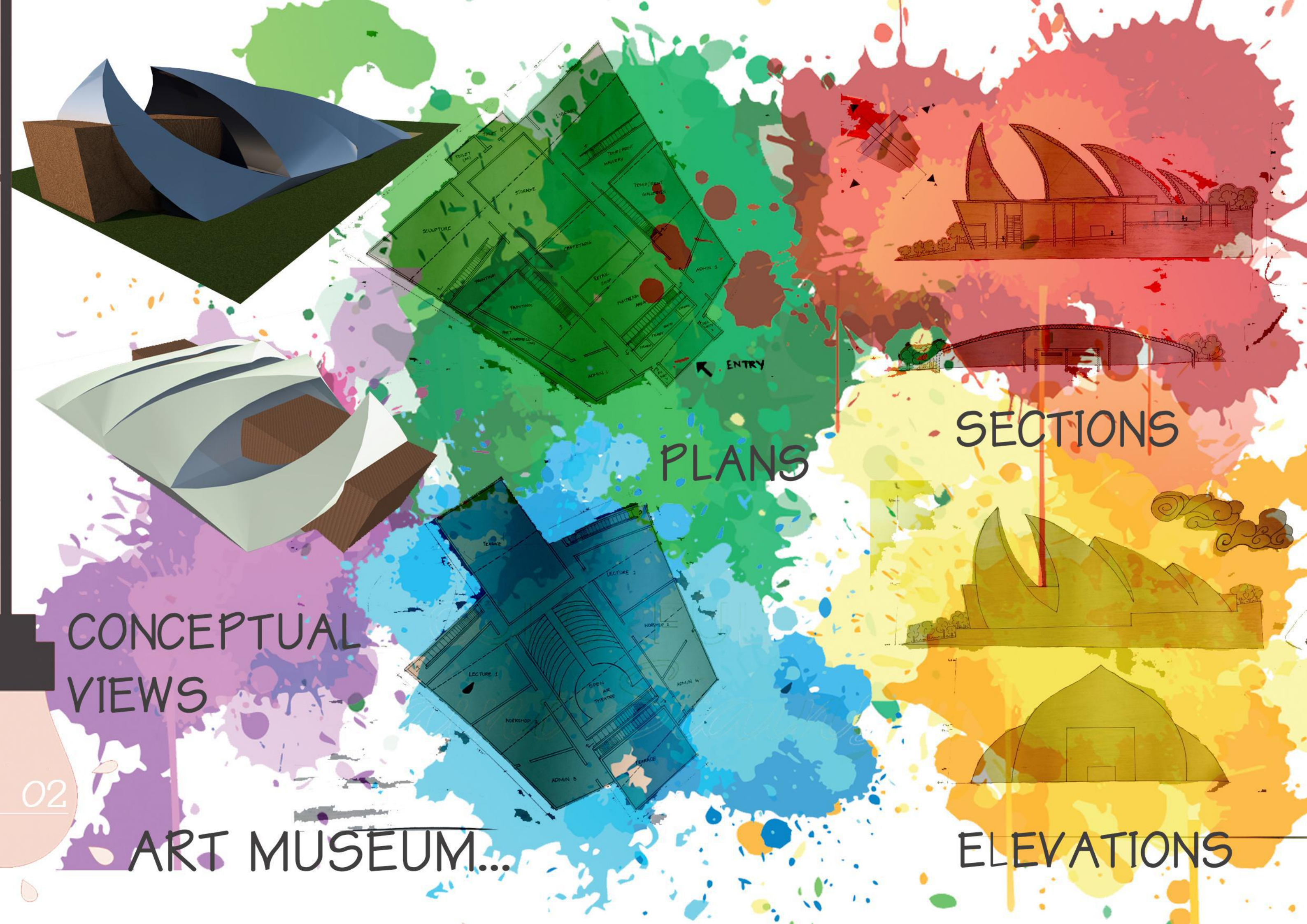
ELEVATION - C

MANUAL WORKS...

The concept of my bedroom design is the shrunk and blow concept, so that I took the movie, Money I Shrunk the kids as my theme and derived my interiors from the theme suiting to my concept.....

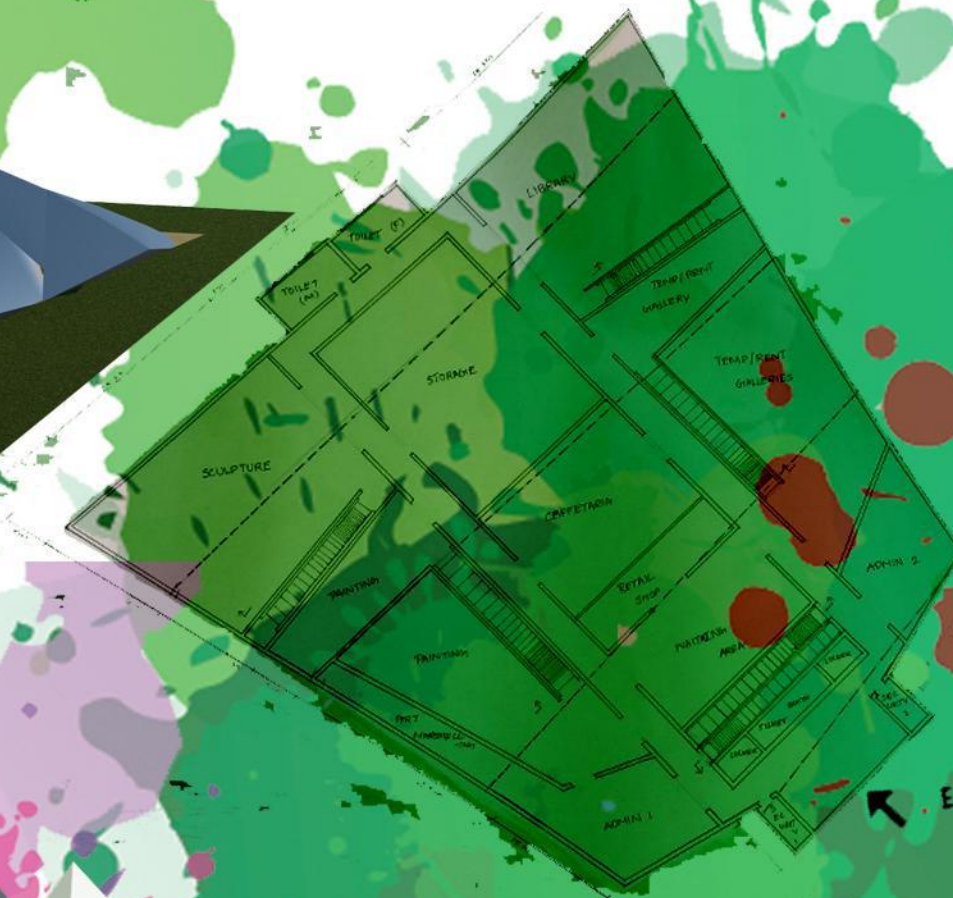


HONEY, I SHRUNK THE KIDS



CONCEPTUAL VIEWS

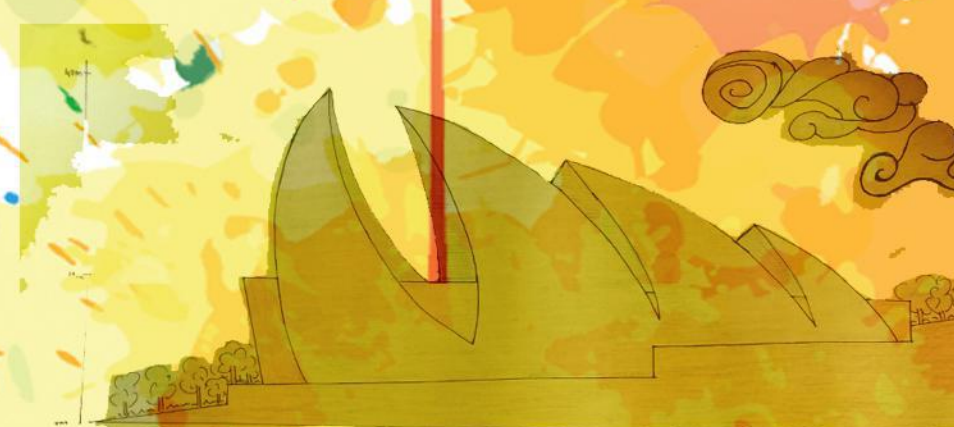
ART MUSEUM...



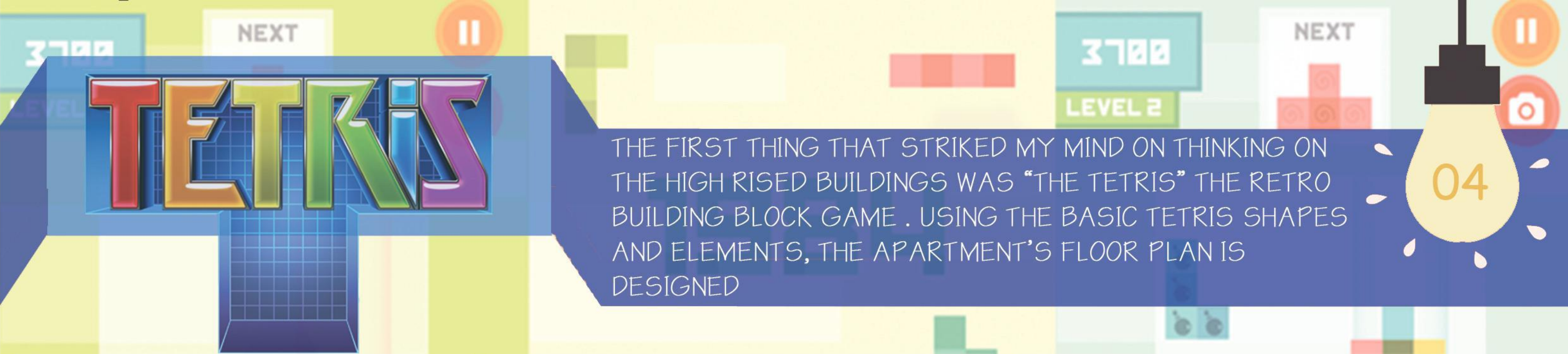
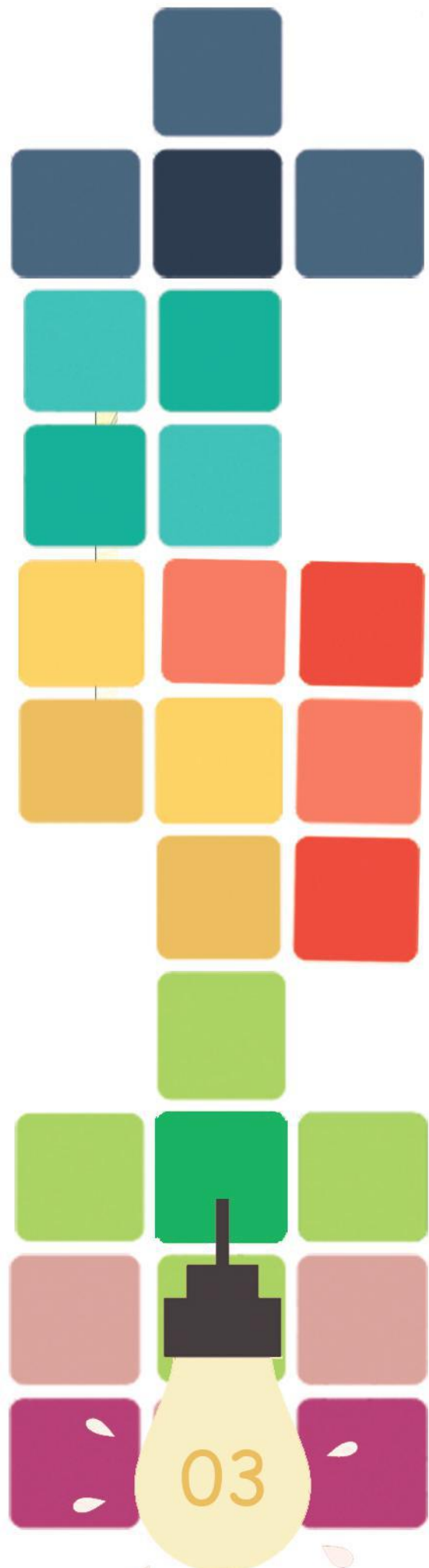
PLANS



SECTIONS



ELEVATIONS

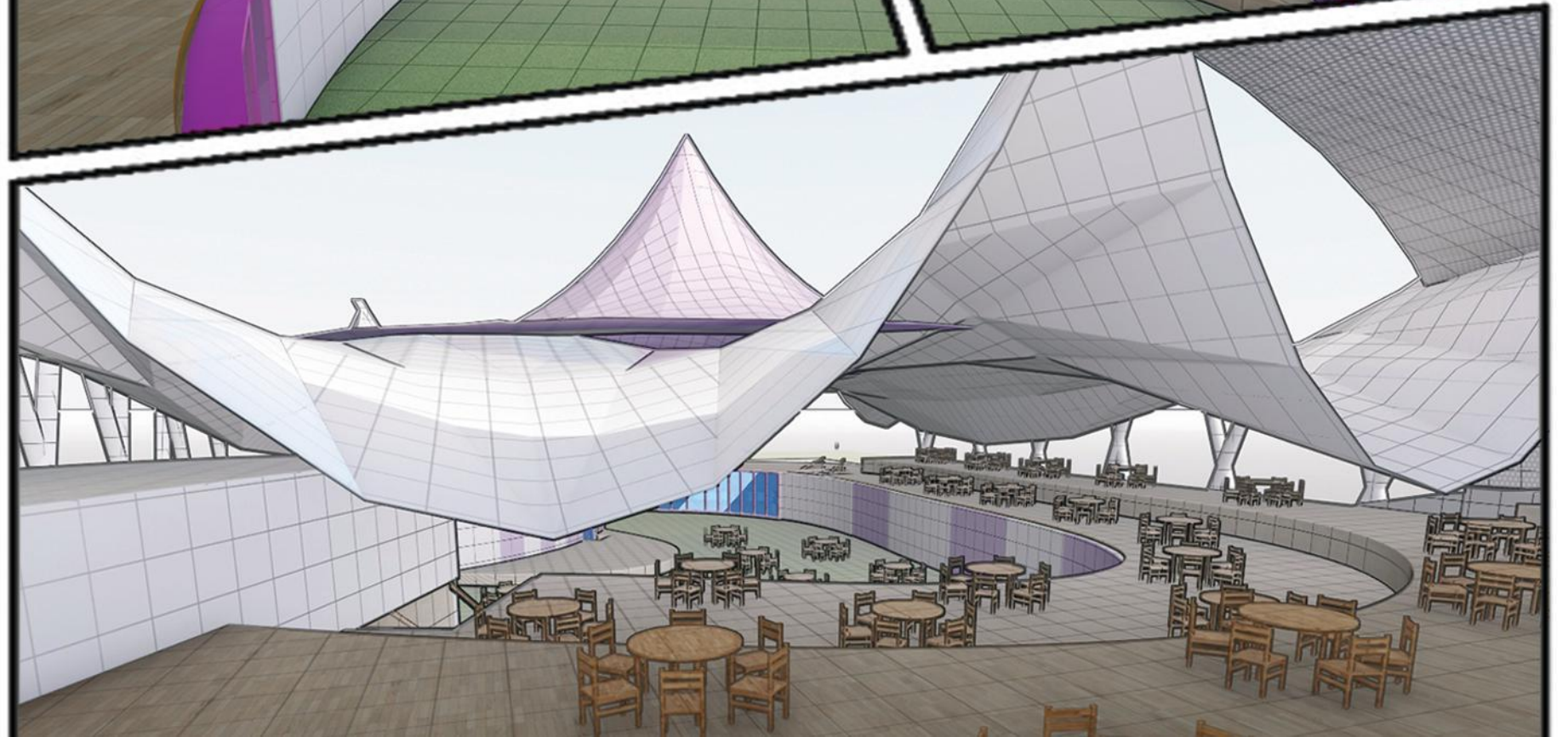
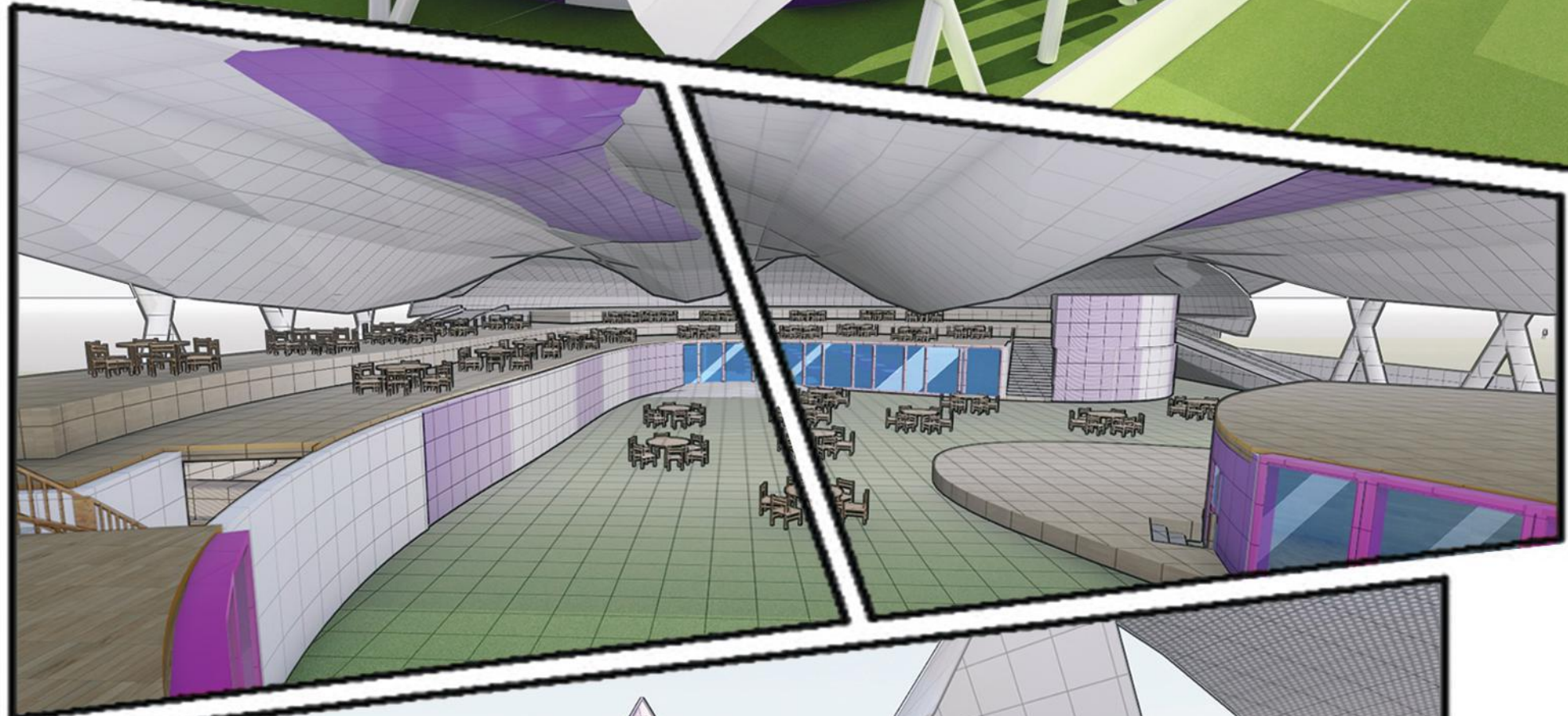


THE FIRST THING THAT STRIKED MY MIND ON THINKING ON THE HIGH RISED BUILDINGS WAS "THE TETRIS" THE RETRO BUILDING BLOCK GAME . USING THE BASIC TETRIS SHAPES AND ELEMENTS, THE APARTMENT'S FLOOR PLAN IS DESIGNED



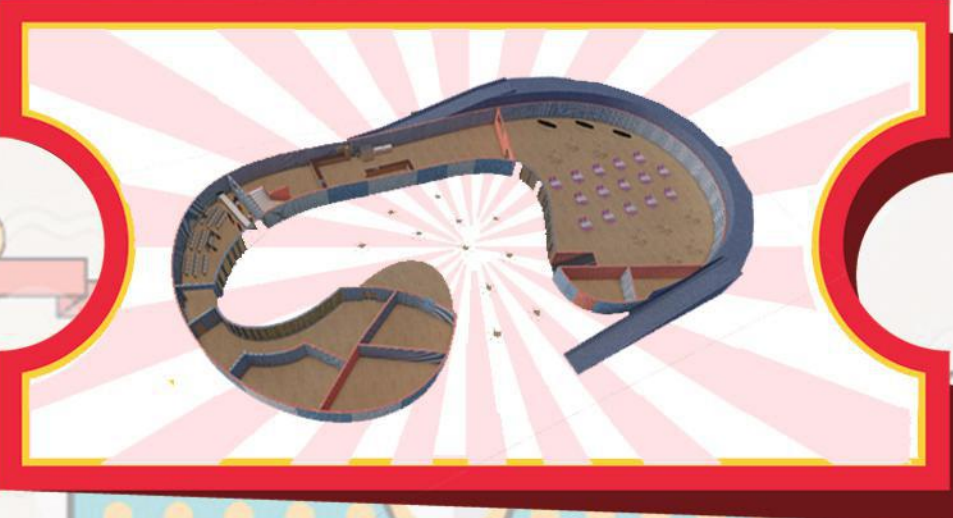


05

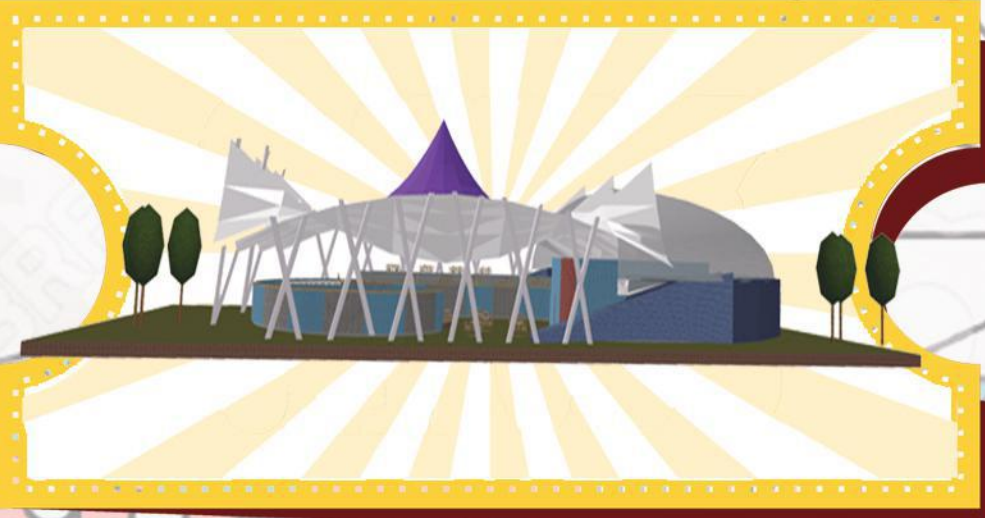


THE "CIRCUISIN" - A CIRCUS THEMED FUSION HIGHWAY RESTAURANT ENTERTAINS ALL SORT OF CUSTOMERS WITH ITS MESMERISING COLORFUL EXTERIORS AND DELIGHTFUL CRAZY FUSION FOODS...

06



PLANS



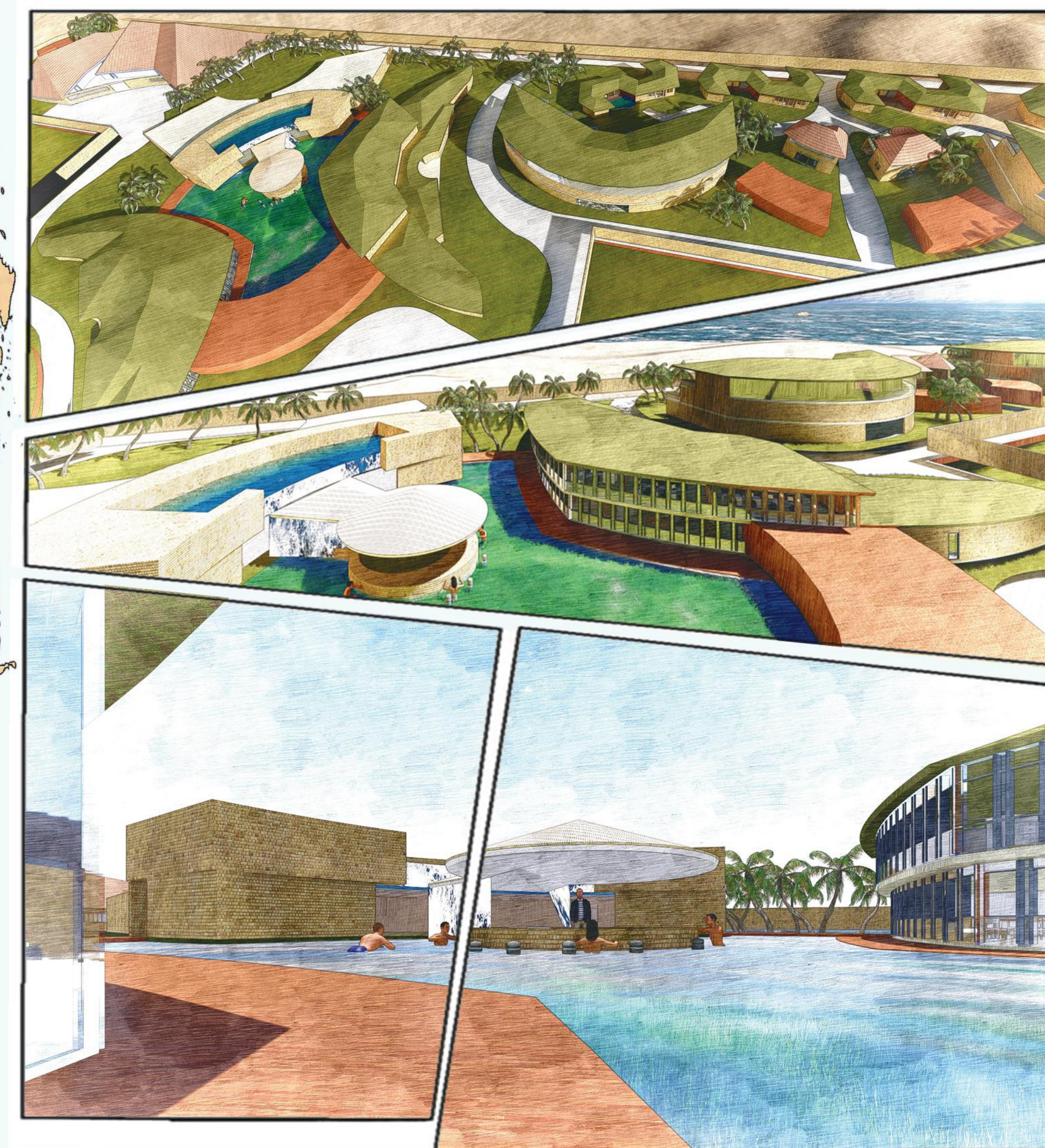
ELEVATIONS



SECTIONS



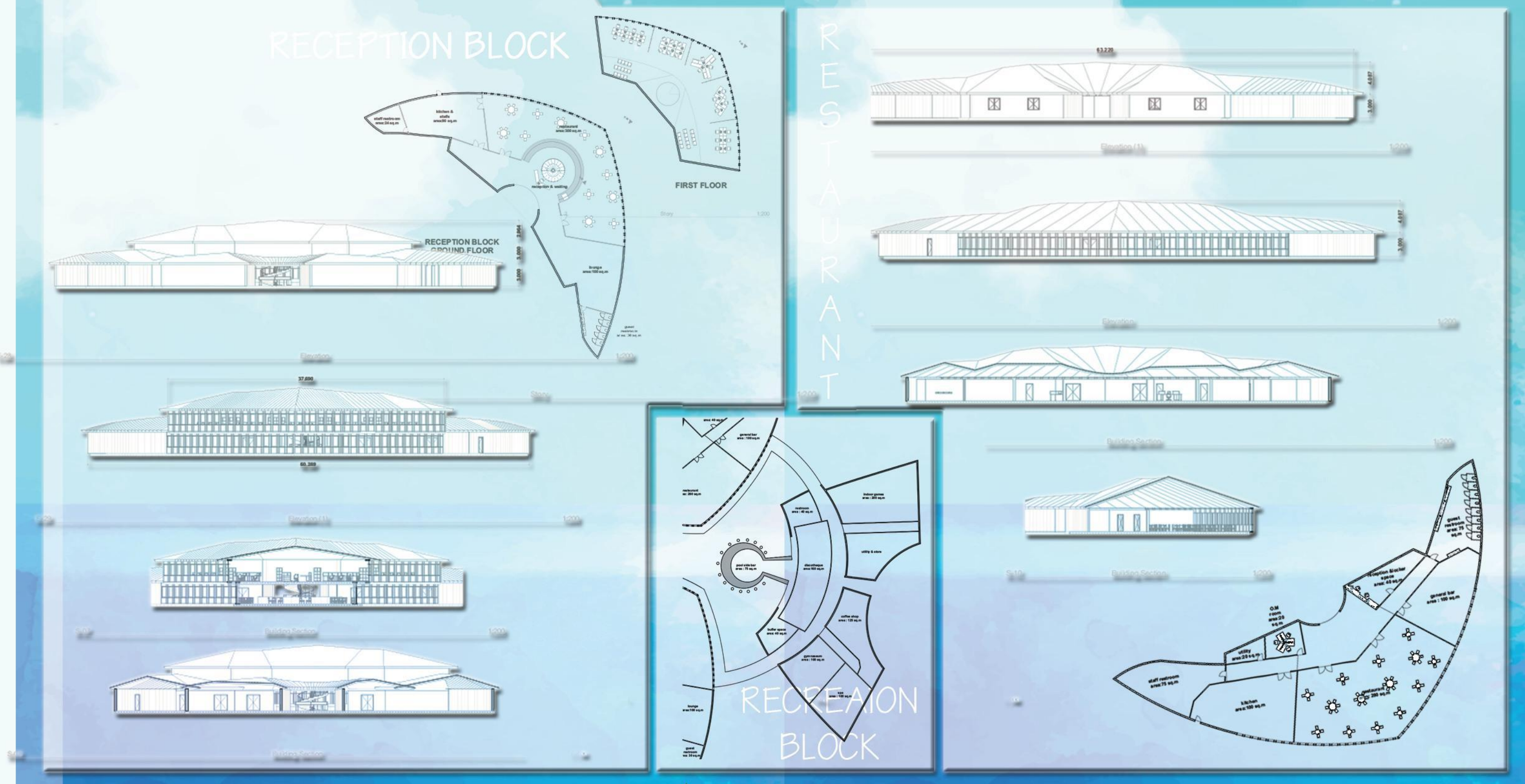
CIRCUIS



THE PARTY RESORT

THE BEACH RESORT FOR PARTY FREAKS WELL PLANNED FOCUCED ON ITS EVERY DAY ACTIVITIES , FUN ELEMENTS AND ALSO SATISFIES THE TOURISTS , RECREATE THIER LEISURE TIME WITH DELICIOUS FOOD AND LUXURIOUS HOTELS...

08





ANJARAM · B

DOOR NO:
New no :10
Old no: 34

LOCATION:
Naatumuthu
Kumarappa Street,
Mylapore,
Chennai - 600004

4.1 பதவி பெருமன்தான்



1.1 SPACES OR REALMS

WHAT IS A SPACE OR REALM?

- SPACE IS THE MAPPING OF THE SPATIAL ELEMENTS THAT DEFINE A LOCALITY AND HOW IT RELATES TO THE SURROUNDING ENVIRONMENT.
- A SPACE IS A MENTAL CONSTRUCTION OF THE REALITY OF A PLACE.
- A SPACE IS A SOCIAL CONSTRUCTION OF THE REALITY OF A PLACE.

WHY IS A SPACE OR REALM?

- TO DEFINE THE MAPPING OF THE SPATIAL ELEMENTS THAT DEFINE A LOCALITY AND HOW IT RELATES TO THE SURROUNDING ENVIRONMENT.
- TO DEFINE THE MAPPING OF THE SPATIAL ELEMENTS THAT DEFINE A LOCALITY AND HOW IT RELATES TO THE SURROUNDING ENVIRONMENT.
- TO DEFINE THE MAPPING OF THE SPATIAL ELEMENTS THAT DEFINE A LOCALITY AND HOW IT RELATES TO THE SURROUNDING ENVIRONMENT.

URBAN DESIGN STUDIO 2016
DR. MQR UNIVERSITY

URBAN DESIGN 2016

URBAN DESIGN 2K16 - WERE MY PART COVERS THE OPEN SPACES AND WATER BODIES OF MYLAPORE. INCLUDES CASE STUDIES AND DOCUMENTATIONS OF VARIOUS TEMPLE TANKS, OPEN SPACES AND HOUSES...



URBAN DESIGN STUDIO - 7

OPEN SPACES

TO DEFINE THE MAPPING OF THE SPATIAL ELEMENTS THAT DEFINE A LOCALITY AND HOW IT RELATES TO THE SURROUNDING ENVIRONMENT.

TEMPLE TANKS

TO DEFINE THE MAPPING OF THE SPATIAL ELEMENTS THAT DEFINE A LOCALITY AND HOW IT RELATES TO THE SURROUNDING ENVIRONMENT.

KABALI THEERTHAM

TO DEFINE THE MAPPING OF THE SPATIAL ELEMENTS THAT DEFINE A LOCALITY AND HOW IT RELATES TO THE SURROUNDING ENVIRONMENT.

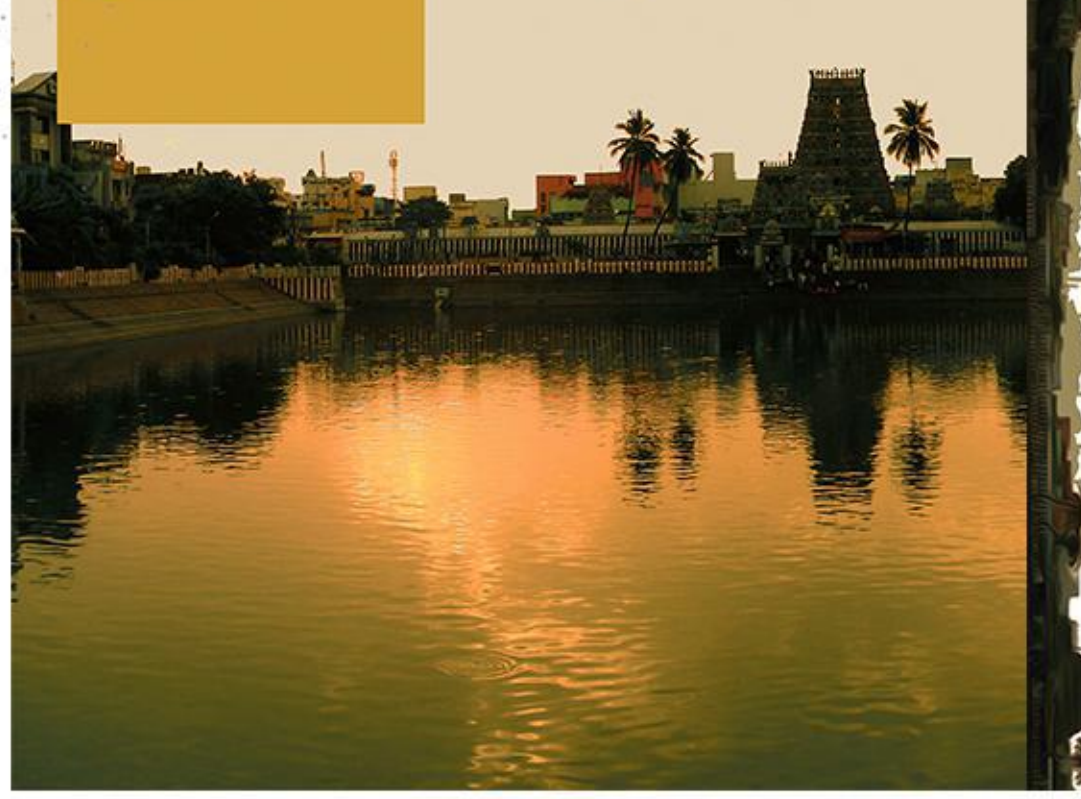
CHITHIRAKULAM

TO DEFINE THE MAPPING OF THE SPATIAL ELEMENTS THAT DEFINE A LOCALITY AND HOW IT RELATES TO THE SURROUNDING ENVIRONMENT.

SANTHANA PUSHPAKARANI

TO DEFINE THE MAPPING OF THE SPATIAL ELEMENTS THAT DEFINE A LOCALITY AND HOW IT RELATES TO THE SURROUNDING ENVIRONMENT.

URBAN DESIGN STUDIO - 7



URBAN DESIGN STUDIO - 7

LEGEND

TO DEFINE THE MAPPING OF THE SPATIAL ELEMENTS THAT DEFINE A LOCALITY AND HOW IT RELATES TO THE SURROUNDING ENVIRONMENT.

ACTIVITIES AROUND TEMPLE TANK

TO DEFINE THE MAPPING OF THE SPATIAL ELEMENTS THAT DEFINE A LOCALITY AND HOW IT RELATES TO THE SURROUNDING ENVIRONMENT.

VEHICLE PARKING

TO DEFINE THE MAPPING OF THE SPATIAL ELEMENTS THAT DEFINE A LOCALITY AND HOW IT RELATES TO THE SURROUNDING ENVIRONMENT.

URBAN DESIGN STUDIO - 7

URBAN DESIGN STUDIO - 7

TEMPLE

TO DEFINE THE MAPPING OF THE SPATIAL ELEMENTS THAT DEFINE A LOCALITY AND HOW IT RELATES TO THE SURROUNDING ENVIRONMENT.

LEGEND

TO DEFINE THE MAPPING OF THE SPATIAL ELEMENTS THAT DEFINE A LOCALITY AND HOW IT RELATES TO THE SURROUNDING ENVIRONMENT.

ADIKEENA PERUMAL TEMPLE

TO DEFINE THE MAPPING OF THE SPATIAL ELEMENTS THAT DEFINE A LOCALITY AND HOW IT RELATES TO THE SURROUNDING ENVIRONMENT.

URBAN DESIGN STUDIO - 7

URBAN DESIGN STUDIO - 7

CONSTRUCTION DETAILS

TO DEFINE THE MAPPING OF THE SPATIAL ELEMENTS THAT DEFINE A LOCALITY AND HOW IT RELATES TO THE SURROUNDING ENVIRONMENT.

SPACES OR REALMS

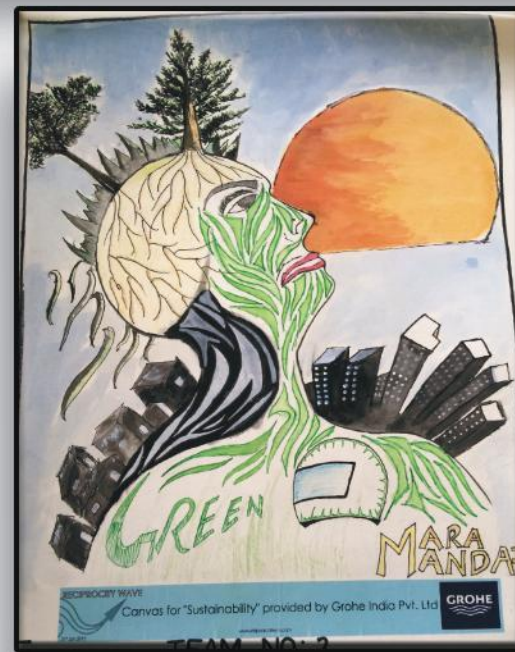
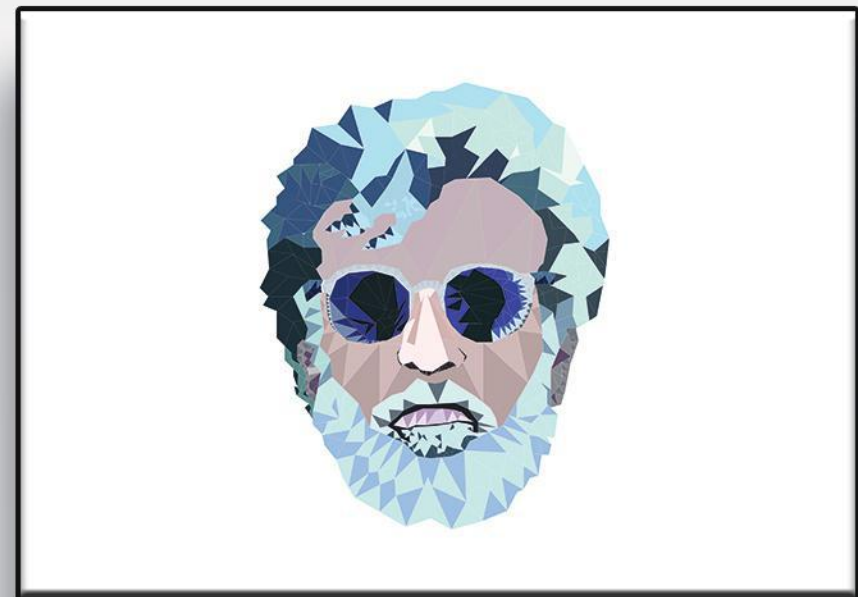
TO DEFINE THE MAPPING OF THE SPATIAL ELEMENTS THAT DEFINE A LOCALITY AND HOW IT RELATES TO THE SURROUNDING ENVIRONMENT.

MATERIALS USED

TO DEFINE THE MAPPING OF THE SPATIAL ELEMENTS THAT DEFINE A LOCALITY AND HOW IT RELATES TO THE SURROUNDING ENVIRONMENT.

URBAN DESIGN STUDIO - 7





Shiva Ram`s Curriculum vittae

Shiva Home

Skills [Mark all as read](#) · [Mute](#) · [Settings](#)

- ARCHICAD Upgraded to level : Pro
6 MONTHS AGO
- LUMION Level : Intermediate
3 MONTHS AGO
- ADOBE PHOTOSHOP Level : Pro
1 YEAR AGO
- AUTODESK SKETCHBOOK Level : Intermediate
6 MONTHS AGO
- GRAPHISOFT ARCHICAD Level : Pro
1 YEAR AGO
- SKETCH UP Level : Intermediate
2 YEARS AGO
- AUTODESK AUTOCAD Level : Intermediate
2 YEARS AGO

[Recruit Me](#)
To See All

Former Student at Sri Jayendra Saraswati Swamigal Golden Jubilee Matriculation School
1 June 2007 to 20 March 2013

Studies Bachelor of Architecture (B.Arch) at Dr. MGR Educational and Research Institute
Attending from 2013 to 2018

Lives in Chennai, India

From Tirunelveli

Born on 12 December 1995
ramshiva63@gmail.com
+91 9659463162

English (UK) · English (US) · தமிழ் · हिन्दी · Français (France)

Status Photo/Video Life Event

MYSELF :
#self_confidence #LAZY
#quick_learner #Geek #DREAMER #jovial #creative
#the1wierdo_inclass #explorer

ARCHITECTURE TO ME :
#architecture_is_avisual_art_where_building_speak_for_themselves
#whatever_we_build_endup_building_us
#simplicity_is_the_ultimate_sophistication
#creativity_is_intelligence_having_fun

— 😄 feeling excited.

Public Post

ARTWORKS...

RESUME...