

CENTRAL DAVAO STATION

AN INTRODUCTION OF INTEGRATED RAILWAY TRANSIT TERMINAL THROUGH SMART ARCHITECTURE



DAVAO CITY CONTINUES TO DEVELOP ECONOMICALLY AND WITH ITS INFRASTRUCTURES THAT RESULT IN AN INCREASING DEMAND FOR TRANSPORTATION, VEHICULAR TRAFFIC, AIR POLLUTION, WHICH SACRIFICES PASSENGER'S COMFORT AND STYLE.

DESIGN PHILISOPHY

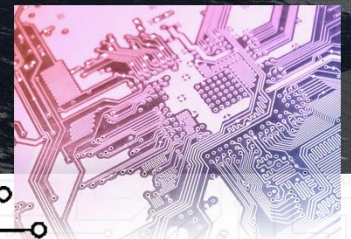
DESIGN CONCEPT

"Smart station"

- CLÉMENT GAUTIER



"INTELLIGENT OPERATION WILL CREATE STATIONS FOR PASSENGER AND CONSUMER MORE APPEALING, PLEASANT, AND EFFECTIVE."



DESIGN OBJECTIVES

DESIGN OBJECTIVES

THERE ARE VARIOUS FEATURES IN STATIONS AND THEIR ENVIRONMENTS. THEY PROVIDE GOVERNMENT TRANSPORTATION SERVICES THAT ARRIVE AND DEPART FROM DISTRICT PLACES, TICKETING CENTERS, WAITING REGIONS, CATERING AND RETAIL (OR OTHER BUSINESS) POSSIBILITIES, AND ON-WARD BUS, BIKE, CAB OR WALKING.



USABILITY

IN THE FUNCTIONAL, PLEASANT, AND SECURE SETTING THE LAYOUT OF STATION EQUIPMENT AND THEIR INSTANT ATMOSPHERE SHOULD ENCOURAGE EFFECTIVE ACTIVITIES AND SERVICE. AN EFFECTIVE PLANT LAYOUT HELPS PRODUCE A FAVORABLE CUSTOMER EXPERIENCE, MINIMIZES DELAYS AND INTERRUPTIONS.

OPERABILITY



HIGH QUALITY STATION SETTINGS WILL ENHANCE ALL ELEMENTS OF A USER'S EXPERIENCE. HIGH-QUALITY EQUIPMENT DESIGN IS FOCUSED ON A MIXTURE OF EFFICIENCY, AVAILABILITY, AND OPERABILITY, WHICH IS A KEY COMPONENT OF THE EXPERIENCE OF THE USER.



QUALITY

VALUE



THE CREATION OF CULTURAL, FINANCIAL, AND ENVIRONMENTAL SIGNIFICANCE IS ESSENTIAL, AND IT GIVES PEOPLE WHO USE THE TRAIN NETWORK AND THOSE WHO MEET IT A FEELING OF NATIONAL PRIDE AND POSSESSION. SUSTAINABLE LANDSCAPE DESIGN, INFRASTRUCTURE EQUIPMENT, AND NAMES FOR PROPERLY USE ALSO ALLOW FOR EFFECTIVE USE OF ROOM AND ASSETS.



PASSENGERS CONVENIENCE AND COMFORT



SAFETY AND SECURITY



SUSTAINABLE DESIGN



DISASTER RESILIENT



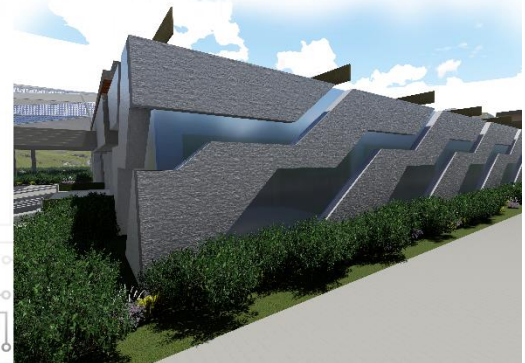
ACCESSIBILITY LAW (BP 344)



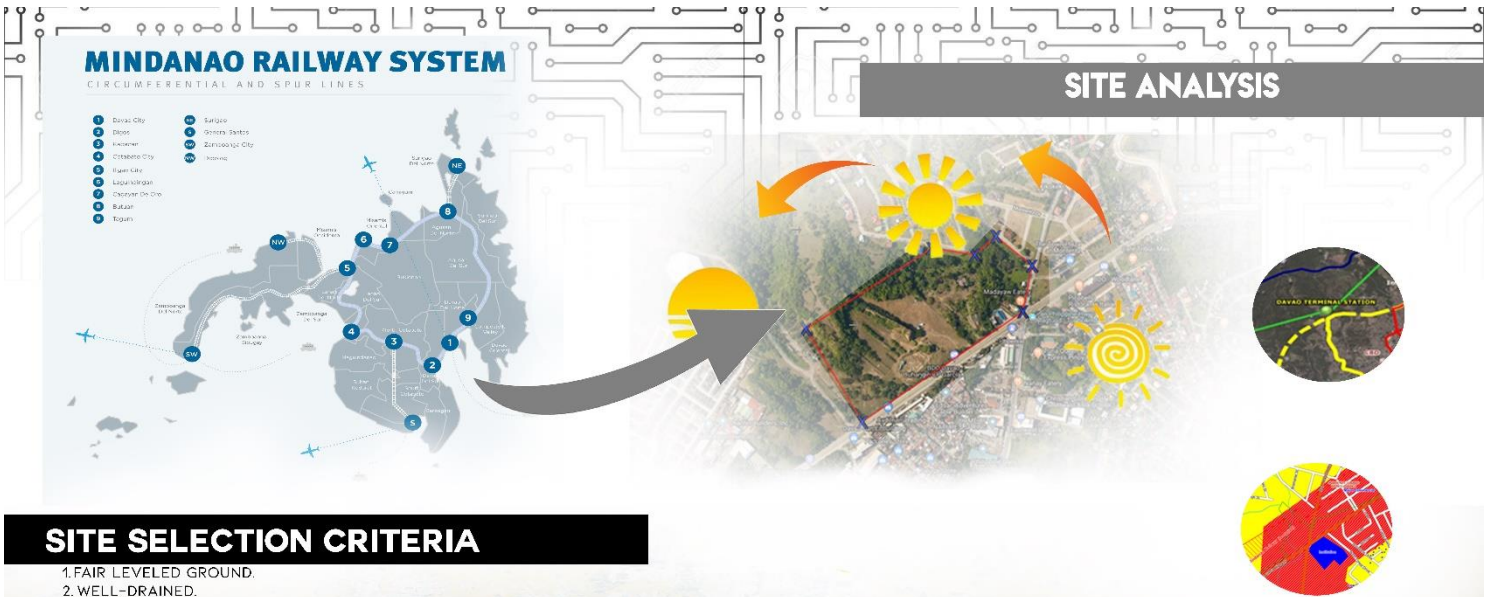
WASTE MANAGEMENT

PRINTED CIRCUIT BOARD

IT IS A PANEL WITH ROWS AND BUTTONS CONNECTING DIFFERENT POINTS. IN THE IMAGE ABOVE, TRACES ATTACH THE DIFFERENT CONNECTORS AND PARTS WITH EACH OTHER ELECTRICALLY.



Thesis Proposal Board 1



SITE SELECTION CRITERIA

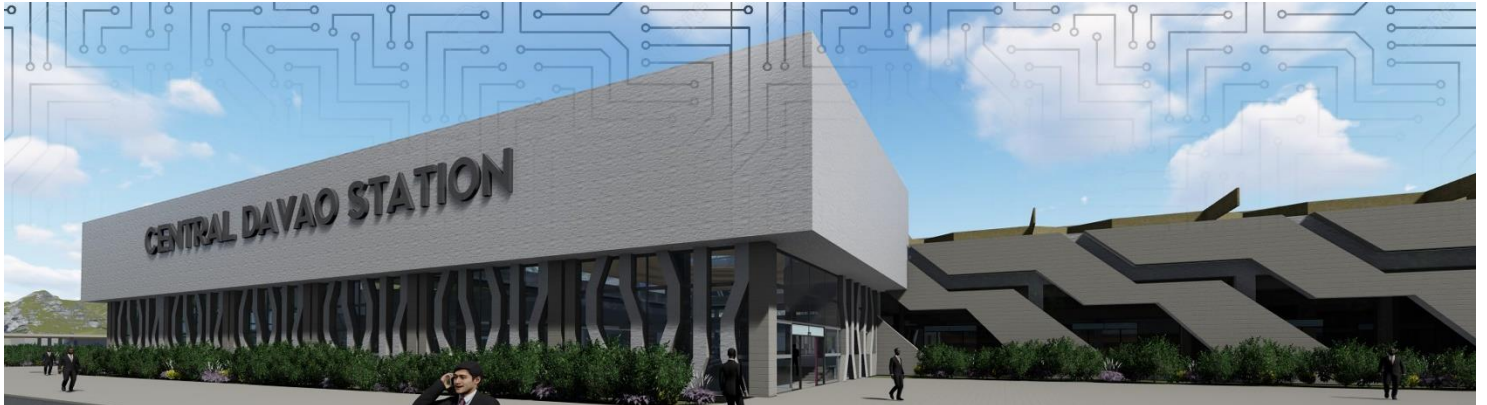
1. FAIR LEVELED GROUND.
2. WELL-DRAINED.
3. PROPER SUPPLY OF WATER.
4. PLENTY OF OPEN SPACE FOR FUTURE EXPANSION
5. IT SHOULD BE NEARER TO THE TOWN.
6. EASY ACCESS.
7. WIDE APPROACH ROAD IN FRONT AND ON THE WAY
8. ECONOMICAL.
9. FULFILL HUMAN NEEDS.
10. EASILY APPROACHABLE FOR PEDESTRIANS.
11. SAFE FOR ALL.
12. LESS CONGESTED
13. CLEAN.

MAGTUOD, MAA, DAVAO CITY,
WHICH IS THE CENTRAL STATION OF
THE CITY.



AERIAL PERSPECTIVE

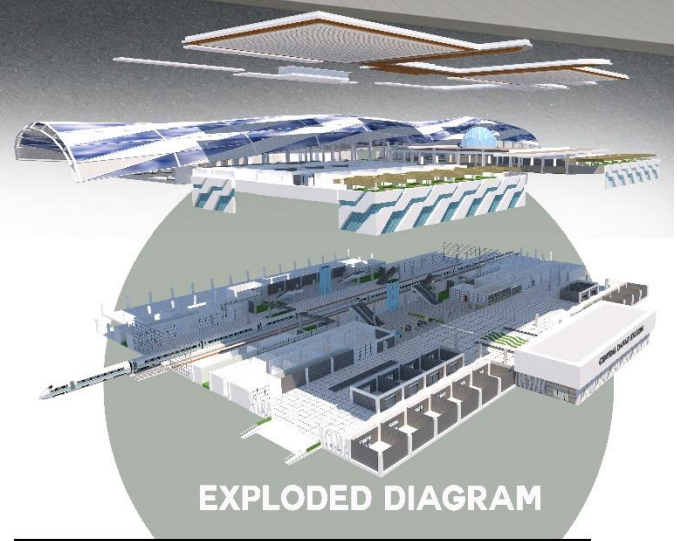
Thesis Proposal Board 2



MAN'S EYE PERSPECTIVE

MATERIALS

- 
 LAMINATED
GLASS
- 
 GRANITE TILES
- 
 MAHOGANY
WOOD
- 
 MARBLE
TILE
- 
 STEEL FRAMING
STRUCTURE
- 
 POST-TENSIONING
CONCRETE



EXPLODED DIAGRAM

INTERIOR PERSPECTIVE



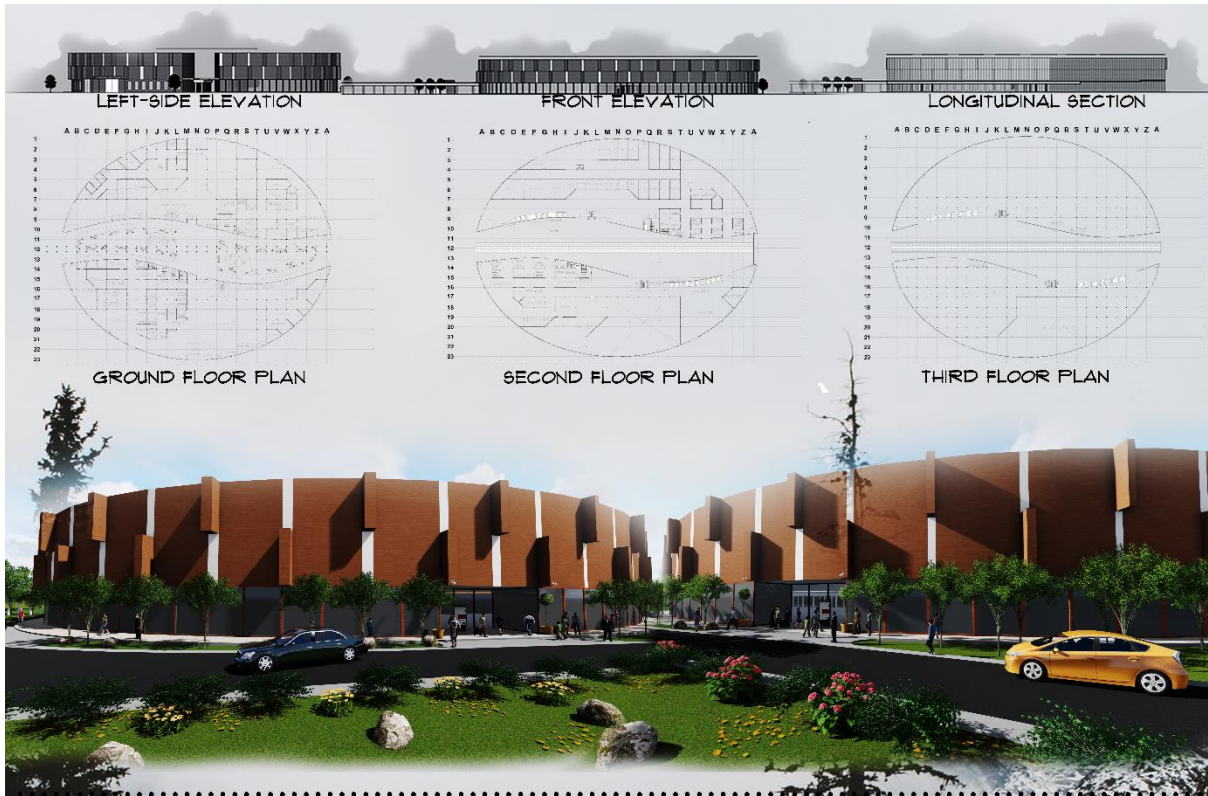
EXTERIOR PERSPECTIVE



Thesis Proposal Board 3



Thesis Proposal Board 4



GATE CITY OF THE SOUTH STATION



Design concept

CIVET COFFEE BEAN



THE WORLD'S MOST EXPENSIVE COFFEE. THEIR DISTINCT FLAVOUR COMES FROM THE ENZYMES THE BEANS ABSORB WHILE INSIDE THE CIVET'S STOMACH. AT THE CIVET COFFEE FARM, THE CIVETS ARE KEPT IN CAPTIVITY AND FED WITH COFFEE BEANS. WHILE YOU ARE HERE, ENJOY THE CUP IF YOU DARE. CIVET COFFEE REPRESENTS NOT ONLY LUXURY BUT ALSO THE QUALITY OF EXPERIENCE IT MAY OFFER. THE SAME AS IT APPLIED IN THE STRUCTURE ITSELF. THE SHAPE OF THE BUILDING BASICALLY BASED ON THE FORM OF THE BEAN PRODUCED BALANCE, AESTHETIC, AND JOY.

ALLAGA, JEFFERSON H.
 ARO 8 : 5:20-9:30
 FINAL MAJOR PLATE:
 RAILWAY STATION
 LOCATION: DIBOOR CITY



Design 8 Major Plate