



INTRODUCTION



Hey Imaginators!

This is Rujuta Katti, Designer + Dreamer.

I am an Interior Designer by Profession and 3D Visualizer by Passion. I am trendsetter with super-eminent color ideologies. Offering Creative visualization in upbringing resourceful ideas in creating a design.

I use SketchUp for 3D Modelling and V-Ray from Chaos Group for photorealistic rendering. I have put out some of my works in this portfolio to show that Photorealistic Renders can also be achieved in SketchUp Modelling and V-Ray Rendering.

Hope You Like It!



MY EXPERIENCE

Hey!

This is Rujuta Katti,
Founder and Director of **OCULAR DESIGNS**



Well actually speaking, I am a newbie.
But I do have some experience in my hand.
Let's Check It Out!

- Interior Design Faculty
At : Walk_In Institute, Thane.
- 3D Visualizer for Marathi Theatre Plays
At : NDzines, Tilaknagar.
- Founder & Director of Ocular Desings
At : Ocular Designs, Navi Mumbai.



CONTENTS :

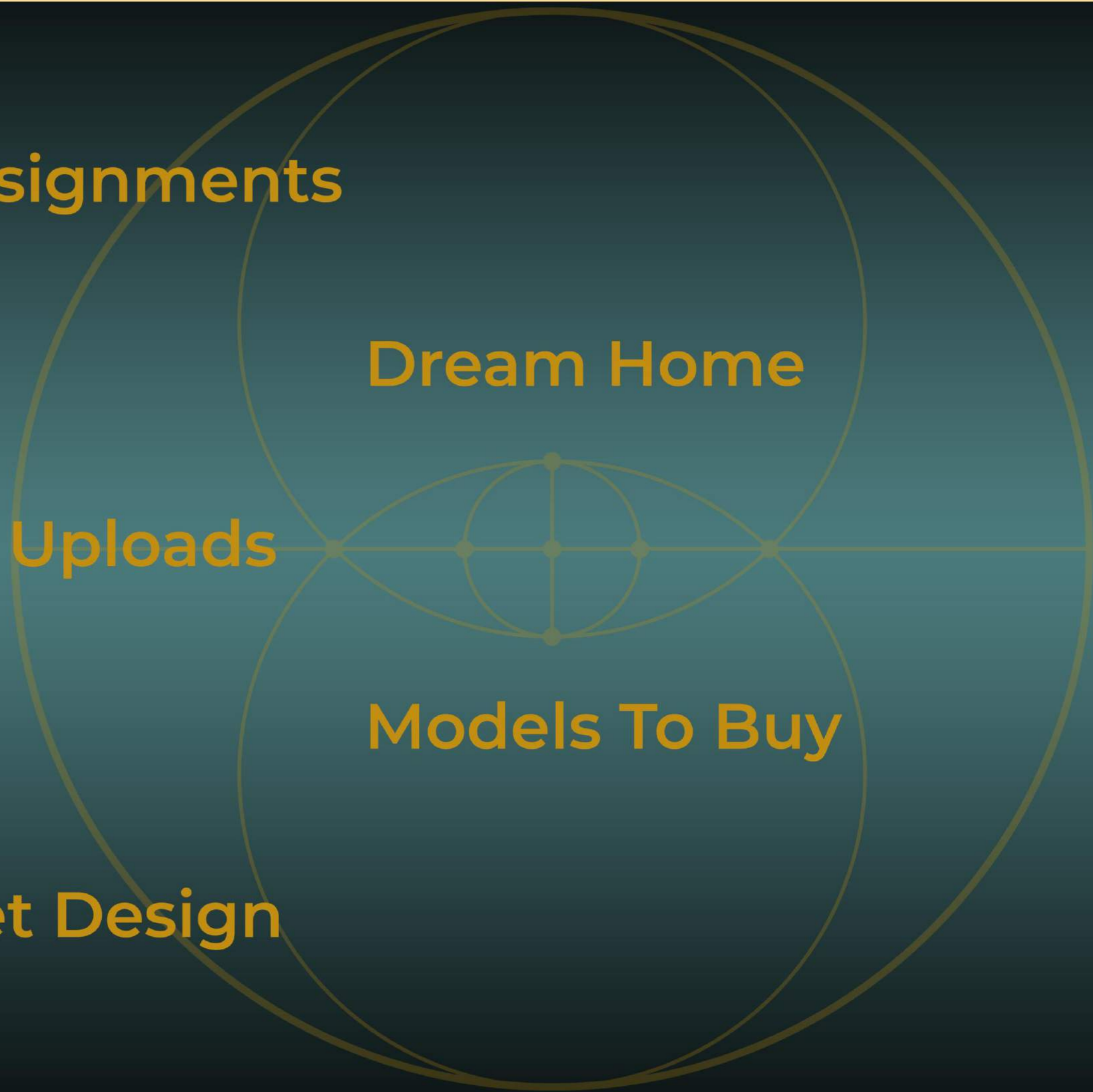
College Assignments

Dream Home

Instagram Uploads

Models To Buy

Theatre Set Design



The image features a teal background with a complex geometric pattern of overlapping circles and lines in a golden-yellow color. The pattern is centered on the right side of the frame. The word "COLLEGE" is written in a golden-yellow, sans-serif, all-caps font, positioned horizontally across the middle of the image. The letters are spaced out and partially overlaid by the geometric lines and circles.

COLLEGE



ASSIGNMENTS



01. RETAIL

DESIGN



01(a). Plan - Top View



01(b). View from Entrance



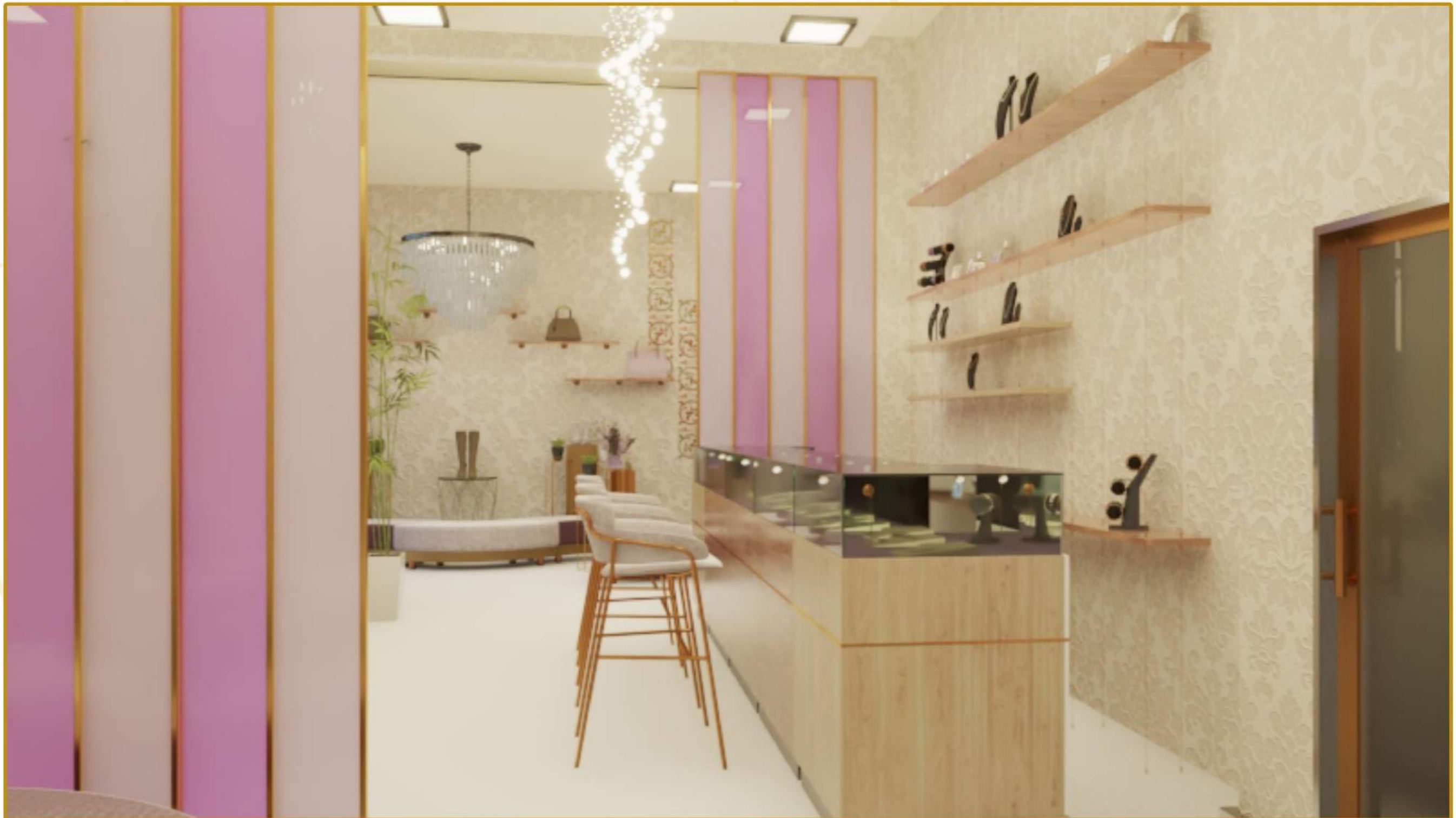
01(c). Entrance Seating



01(d). Display at Entrance



01(e). Jewelry Display Area



01(f). Purple Water Area



01(g). Cash Counter Area



01(h). Front Facade





02.PHOTOSHOP

OFFICE



02(a). Plan - Top View



02(b). Entrance Door



02(c). Reception Area 360 Panorama



02(d). Workstation Area





03.TURKISH

BATHROOM



03(a). Day View



03(b).Night-View



The image features a teal background with a complex geometric pattern of overlapping circles and lines in a golden-yellow color. The pattern is most prominent on the right side, where several large circles intersect, creating a series of smaller, nested shapes. A horizontal line passes through the center of the composition, with small dots marking the points where it intersects the circles. The word "DREAM" is written in a golden-yellow, sans-serif font across the middle of the image, centered horizontally and partially overlaid by the geometric lines.

D R E A M



HOME









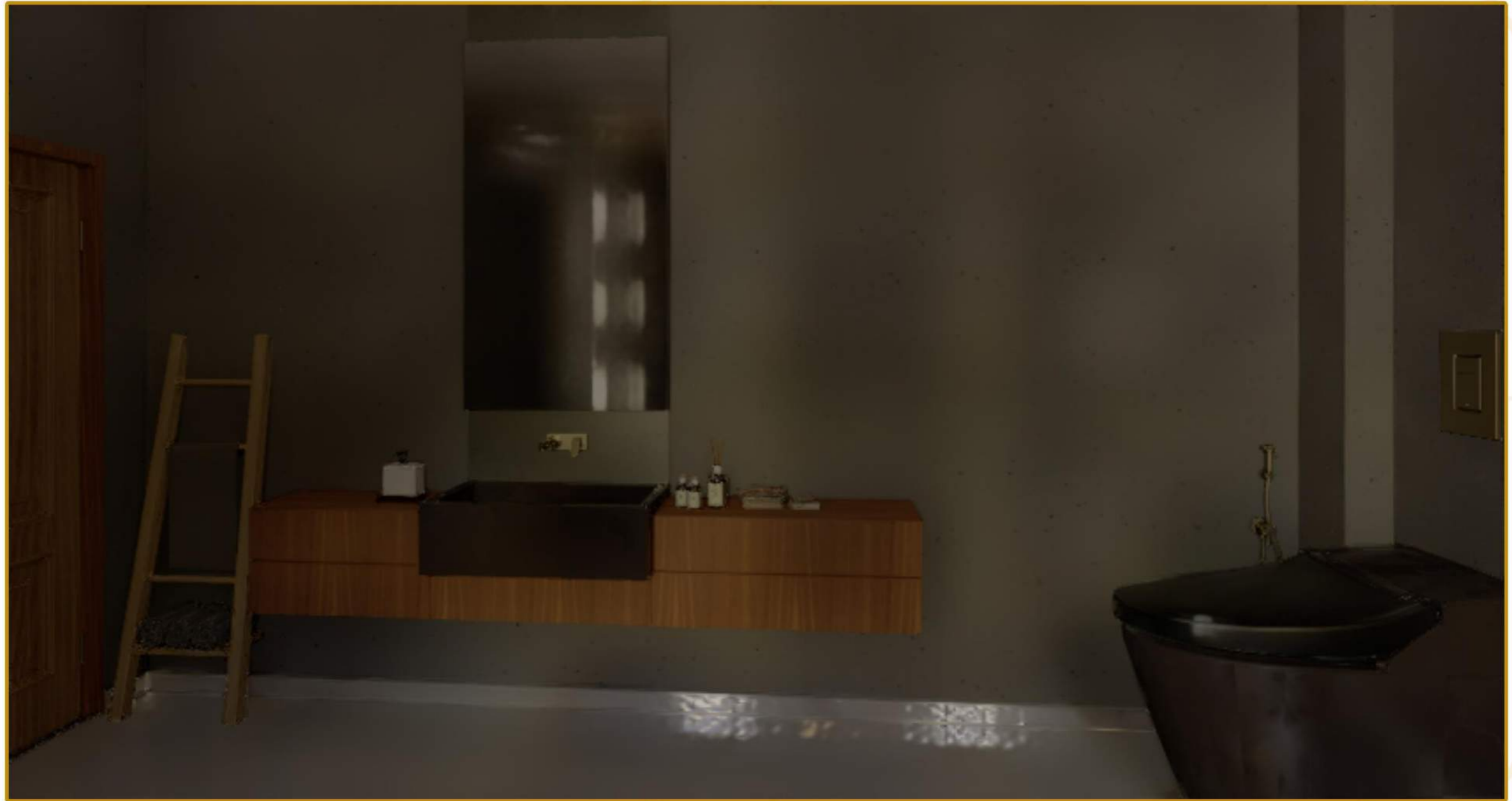














INSTAGRAM

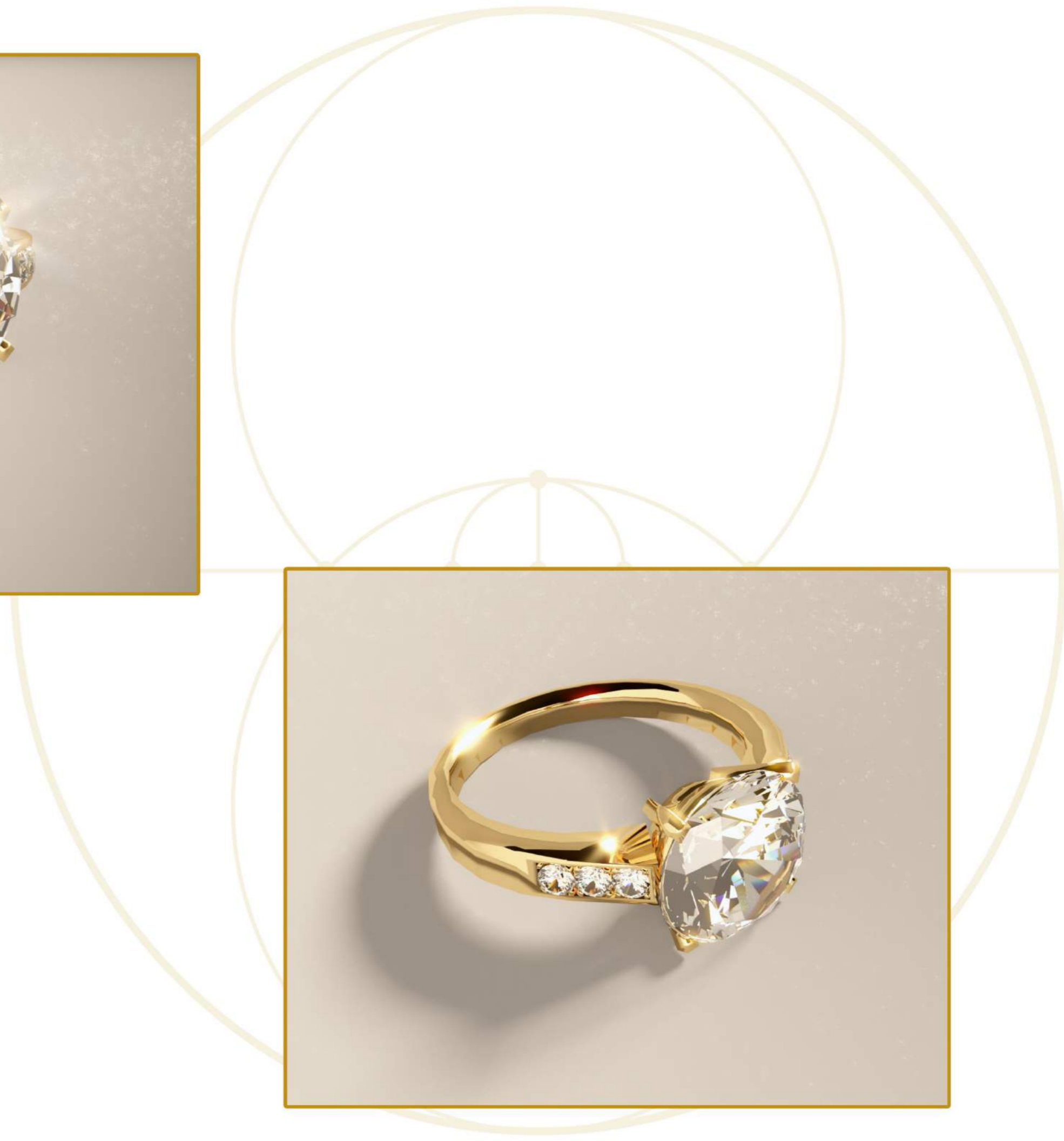



UPLOADS











MODELS T



OBUY

Butterflies in Mason Jar



Engagement & Wedding Rings



The Wine Set



The Gerrard Engagement Set





THEATRE



SET DESIGN

Gandhi Hatya Aani Mi Play



गांधी हत्या
आणि मी

GOPAL MARATHE PRODUCTIONS / SUYOG
PRESENTED BY : SANDESH SUDHIR BHAT
WRITER & DIRECTOR : MAHESH DOKPHODE
SET DESIGN : SANDESH BENDRE

Happily Un-Married Play



A geometric diagram on a white background. It features a large circle on the left. Inside it, there are two smaller circles that overlap each other and the large circle. A horizontal line passes through the centers of these circles. A smaller circle is positioned between the two overlapping circles, touching them at their inner points. A horizontal line also passes through the center of this smaller circle. A rounded rectangular box is drawn around the word 'CONTACT', which is centered on the horizontal line between the two overlapping circles.

CONTACT

E-Mail:
3d.oculardesigns@gmail.com



LinkedIn:

<https://www.linkedin.com/in/rujuta-katti-ocular/>



Facebook:

<https://www.facebook.com/3docular>



Twitter:

<https://twitter.com/OcularDesigns>



Pinterest:

<https://in.pinterest.com/oculardesigns/>



Instagram:

https://www.instagram.com/ocular_designs/