

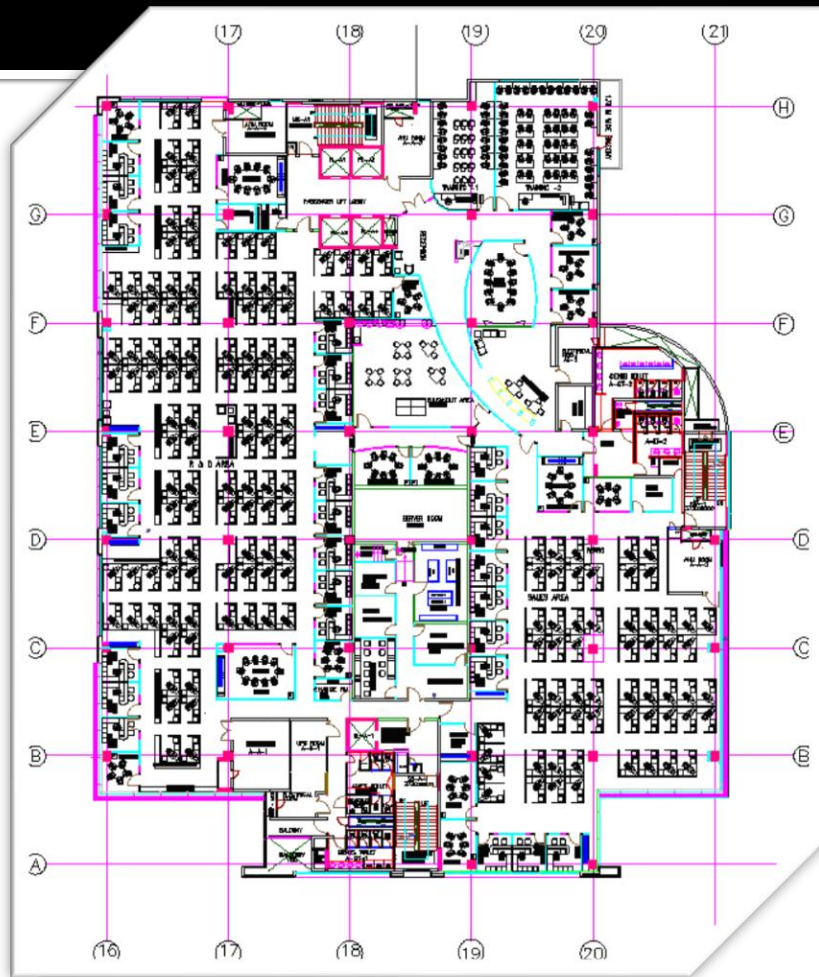
Architecture and Interior Design Portfolio

ADITI KANE

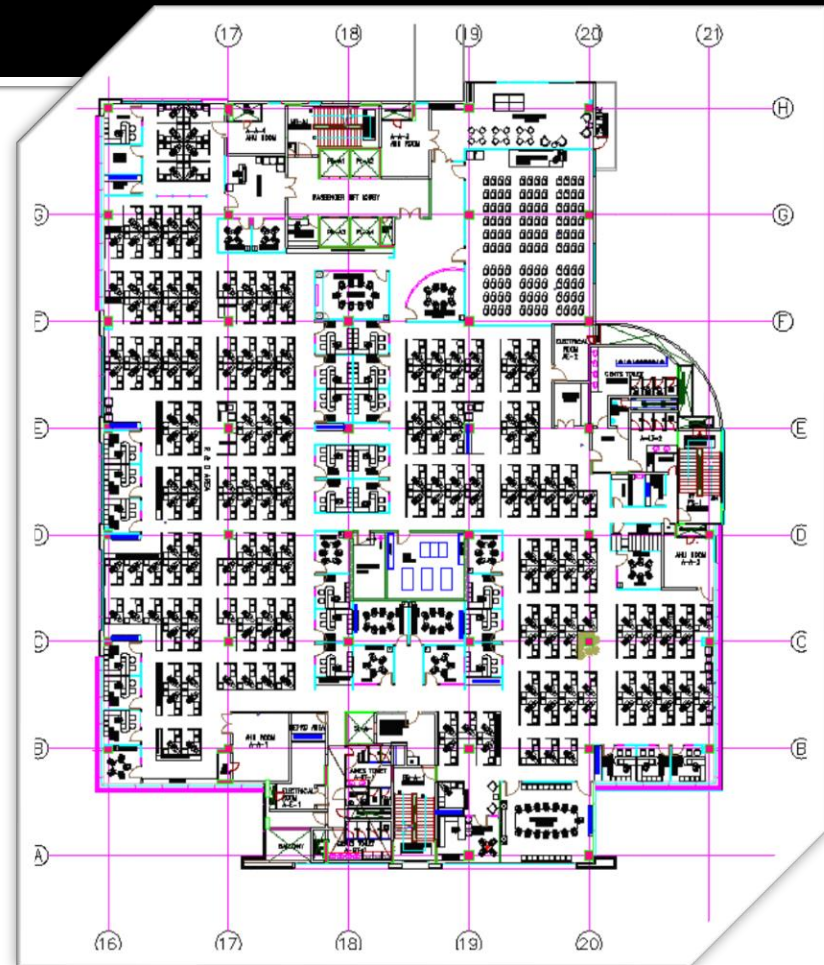


Office Space Design

The Interior Design



Floor Plan

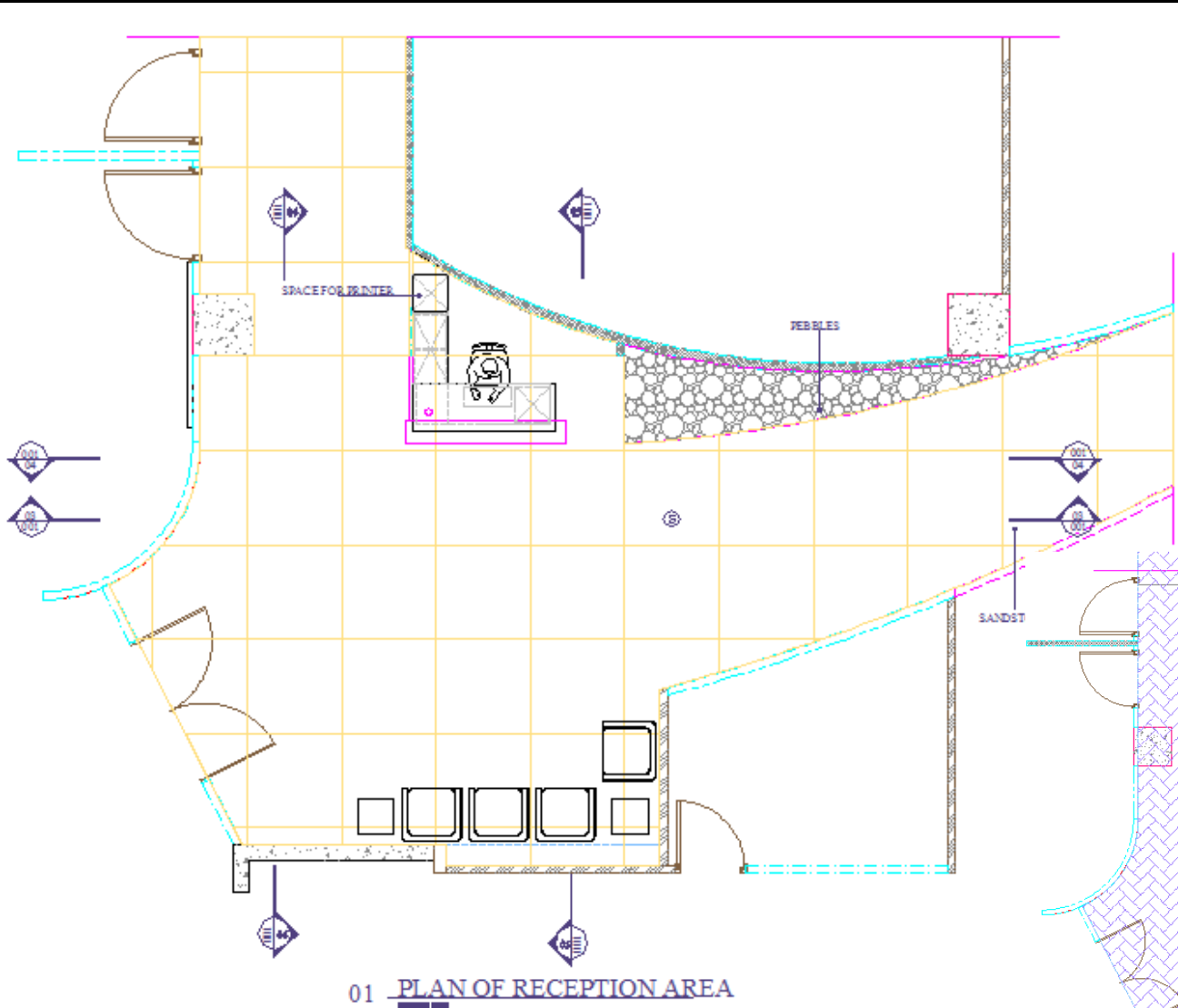


Floor Plan

This facility was designed as an offshore R&D centre in 2004. It's approximate floor plate area was about 40,000sqft on each floor and it was designed to have R&D and Sales area, training rooms, Demo room, meeting rooms, breakout spaces, open office area and server unit.

Office Space Design

The Interior Design

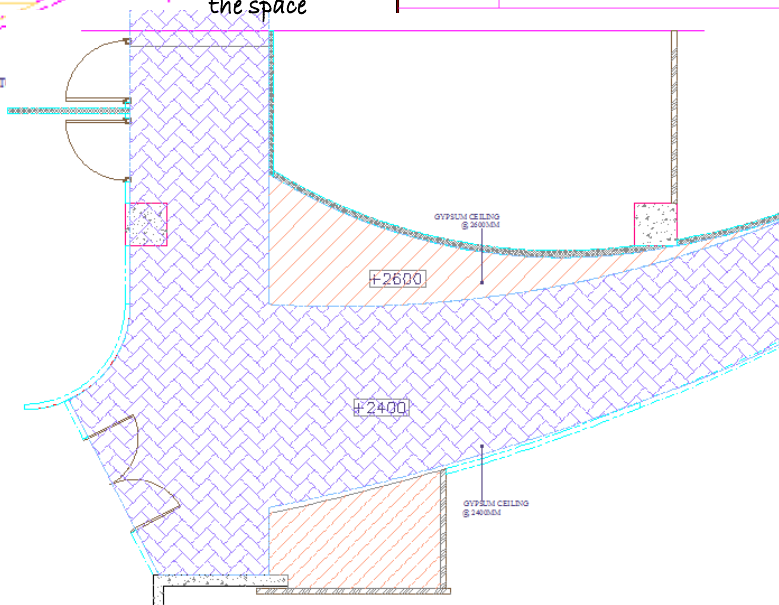


01 PLAN OF RECEPTION AREA

Reception Area: Plan

The curved passage gave a sense of flow to the space with the Demo room over-looking the passage. The sandstone flooring and the Siphorex Mural on the wall were the focal points of the space

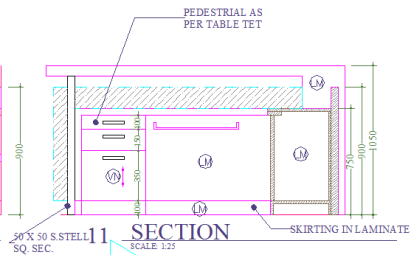
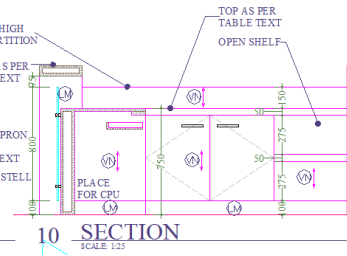
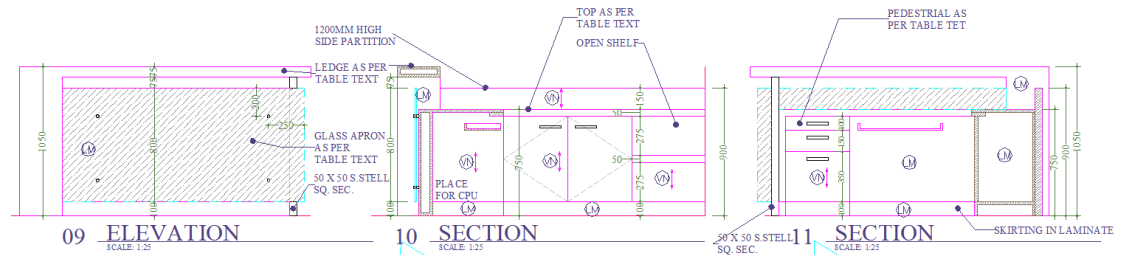
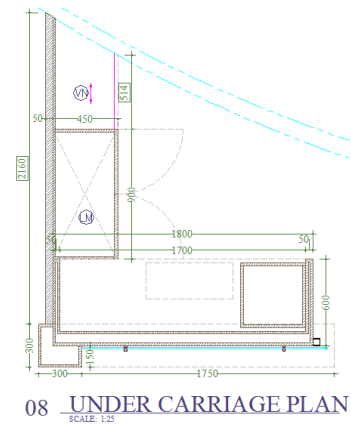
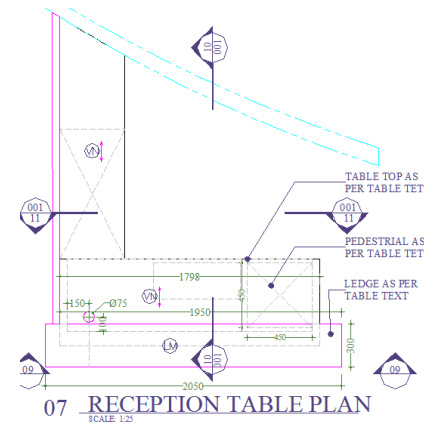
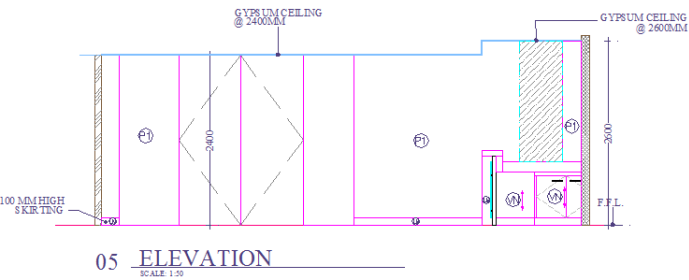
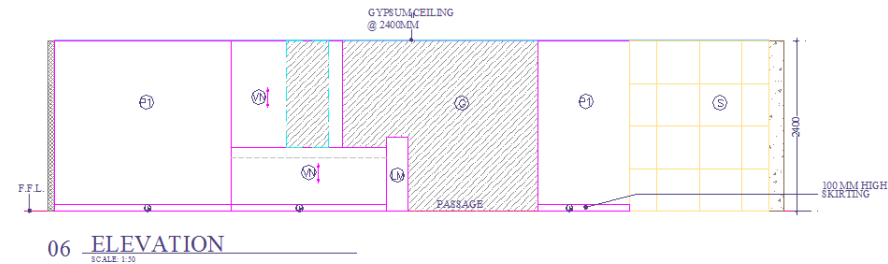
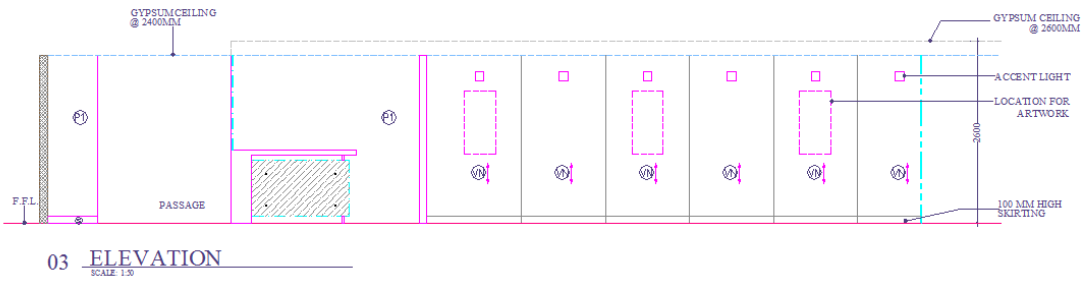
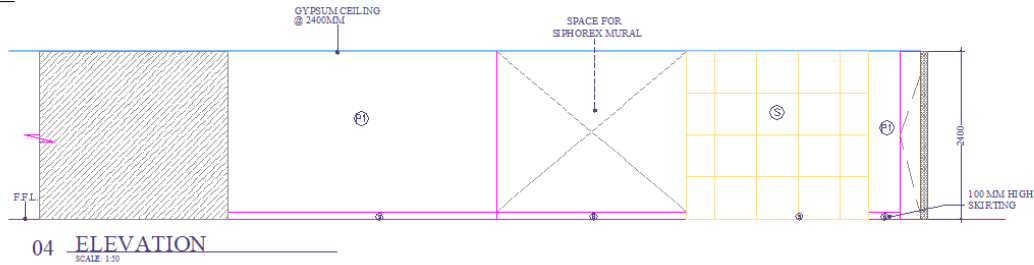
LEGENDS	
	GYPSUM PARTITION
	TEXTURE PAINT FINISH
	VENEER WITH GRAIN DIRECTION
	GLAZING
	SANDSTONE
	GYPSUM CEILING AT 2600 FROM F.F.L.
	GYPSUM CEILING AT 2400 FROM F.F.L.
	GYPSUM BOARD PARTITION
	SIPHOREX WALL
	LAMINATE



02 FALSE CEILING PLAN

Office Space Design

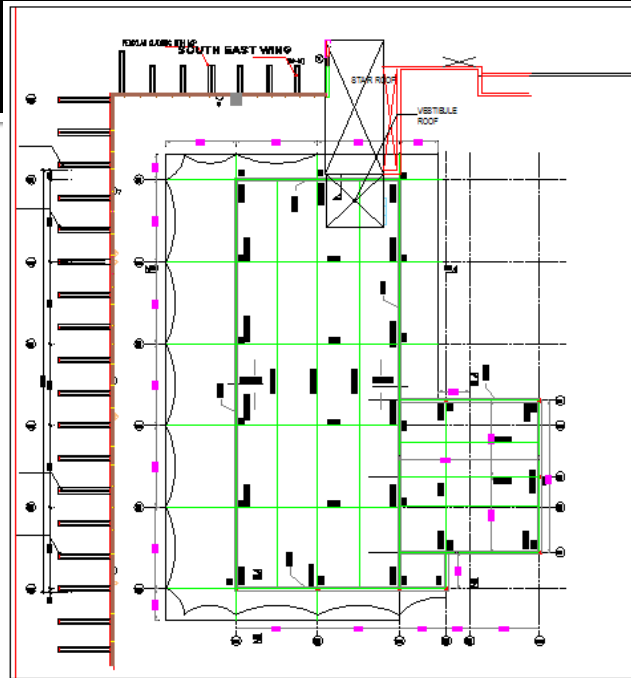
The Interior Design



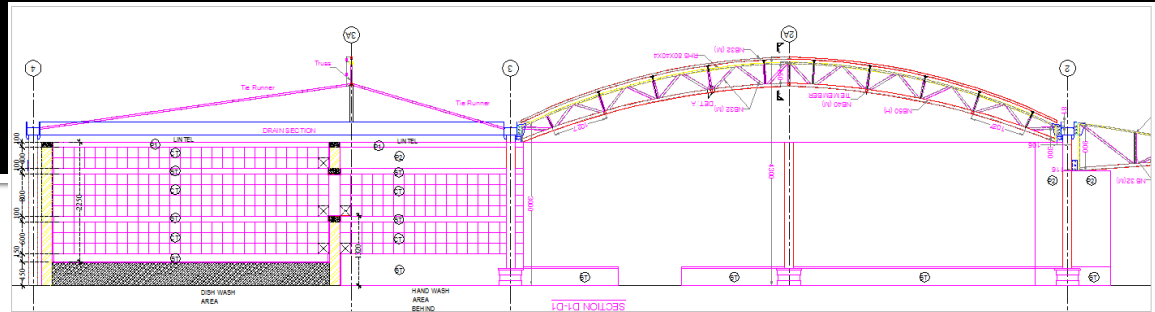
Reception Area: Elevations

Cafeteria Design

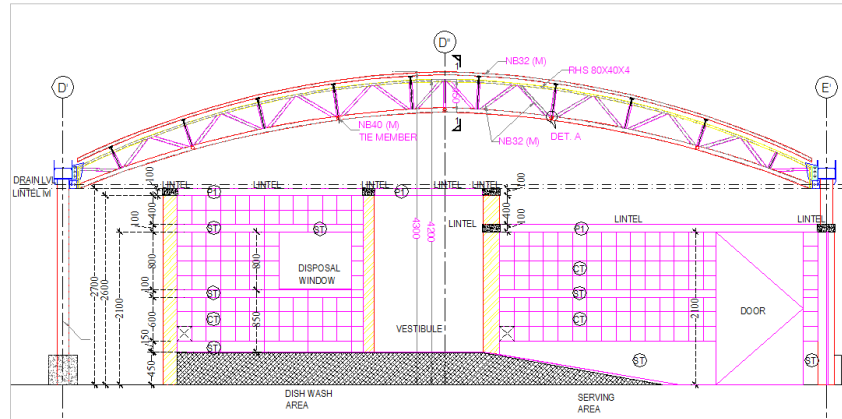
The Interior Design



Roof Plan



04. SECTIONAL ELEVATION
SCALE 1:50

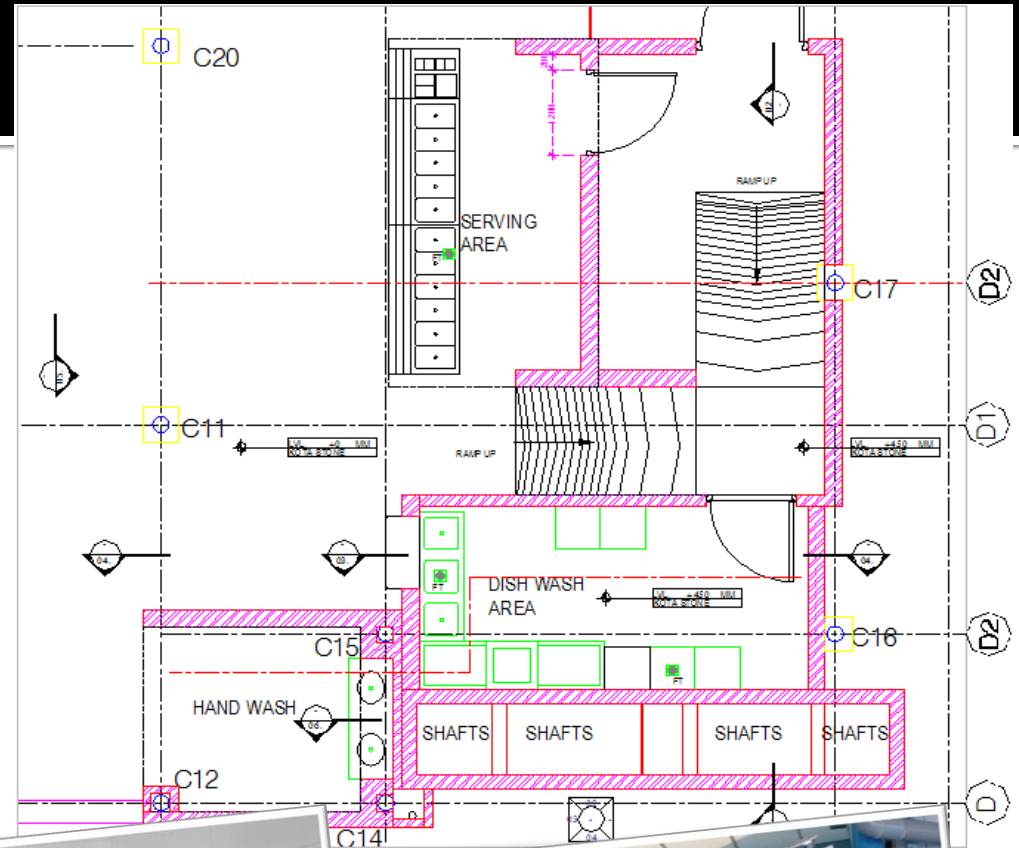
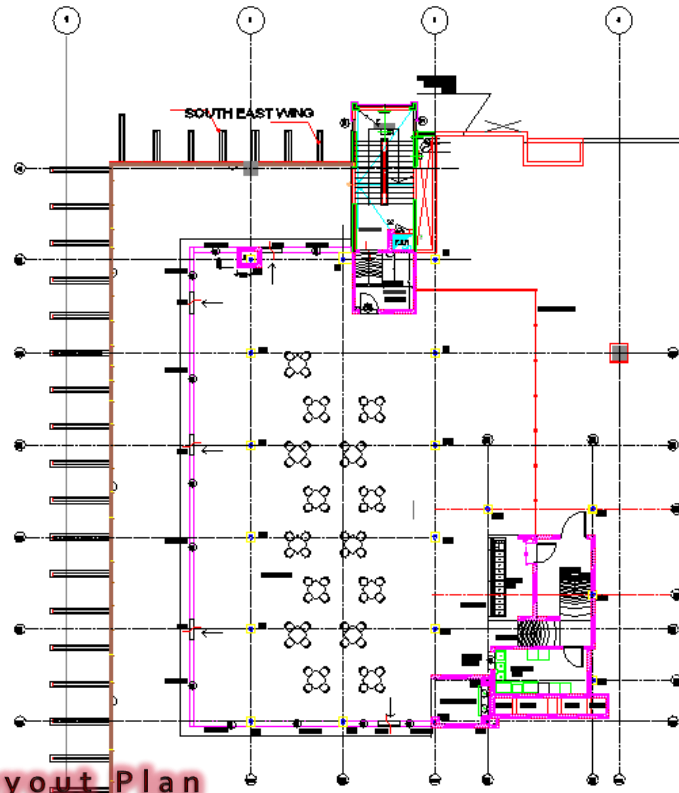


02. SECTIONAL ELEVATION
SCALE 1:50



Cafeteria Design

The Interior Design



Luxury Residence cum Office Design

The Interior Design



Ground Floor Plan

This was a very high end residence cum office design project.. It was designed to cater to both house and office requirements.

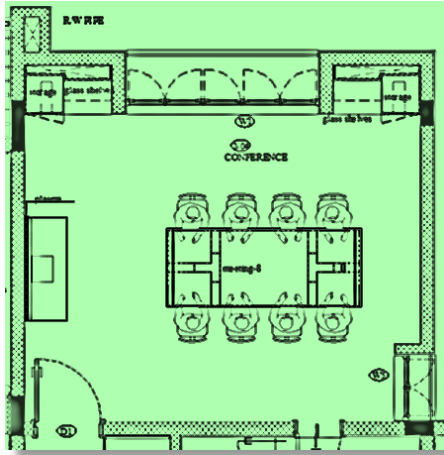


First Floor Plan

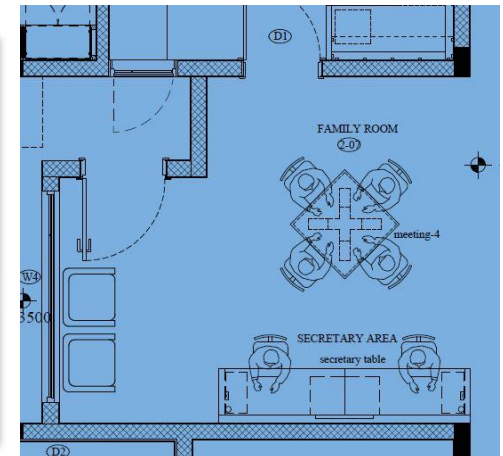


Luxury Residence cum Office Design

The Interior Design



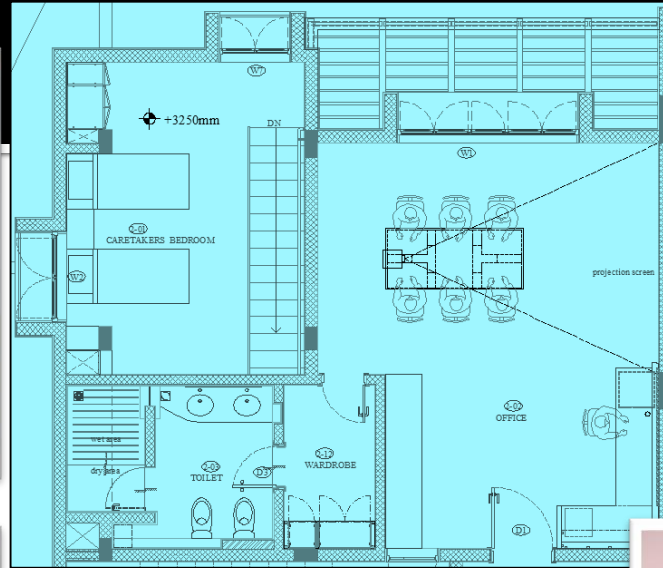
First Floor – Office Rooms



A very high end residence cum office design project. It was provided with best of video conferencing and audio-visuals facilities. Corian was used as a finishing material in most places. It gave the design a very elegant and versatile look.

Luxury Residence cum Office Design

The Interior Design

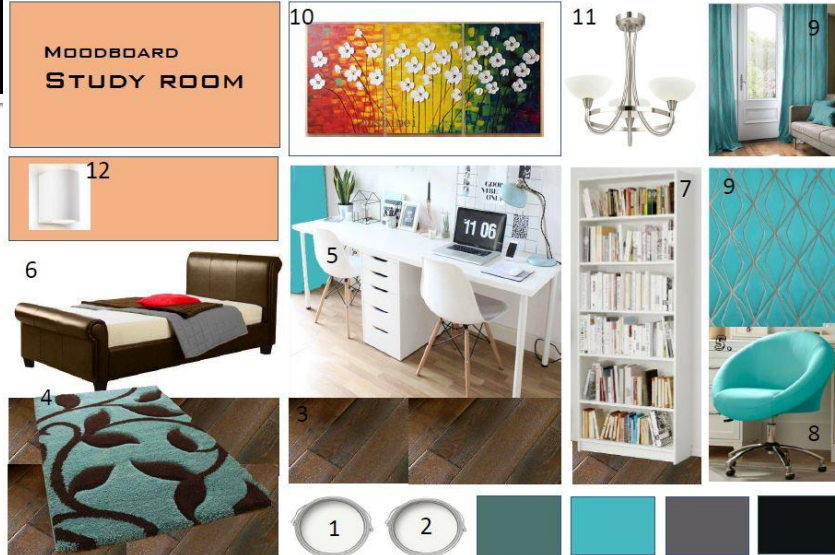


First Floor-Office Room

HOUSE DESIGN

The Interior Design

MOODBOARD STUDY ROOM



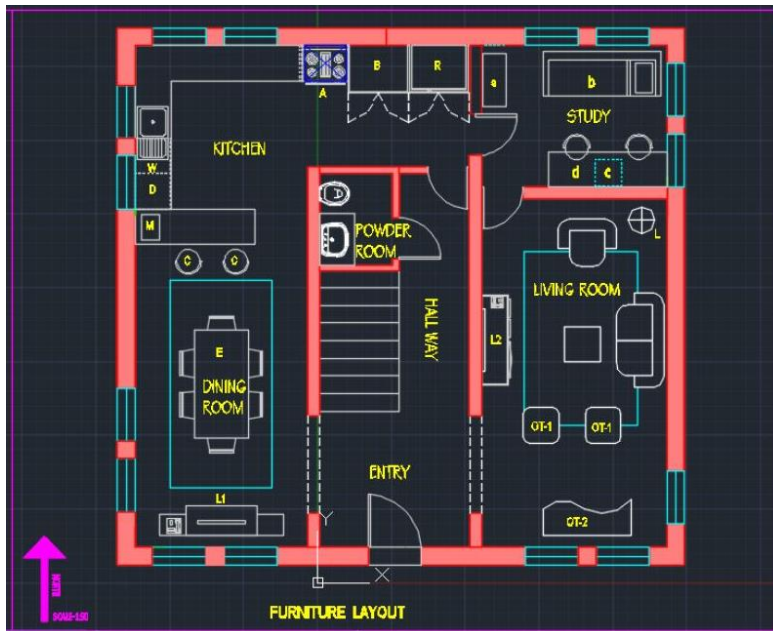
Moodboard for Livingroom & Study

The main color which dominates the Living room is Teal. Teal is a mixture of blue and green. At its brightest it has a yellow undertone and is very close to turquoise.

This color has some cool and calming attributes and hence looks refreshing, calming, sophisticated and that is why I think is the right color for living room.

It's a classic that works with nearly any style, from eclectic to traditional, maybe because it can be both punchy and loud and muted and staid, depending on what is required of it.

It works with super modern design and looks great with reds and gold and pops with bright white.



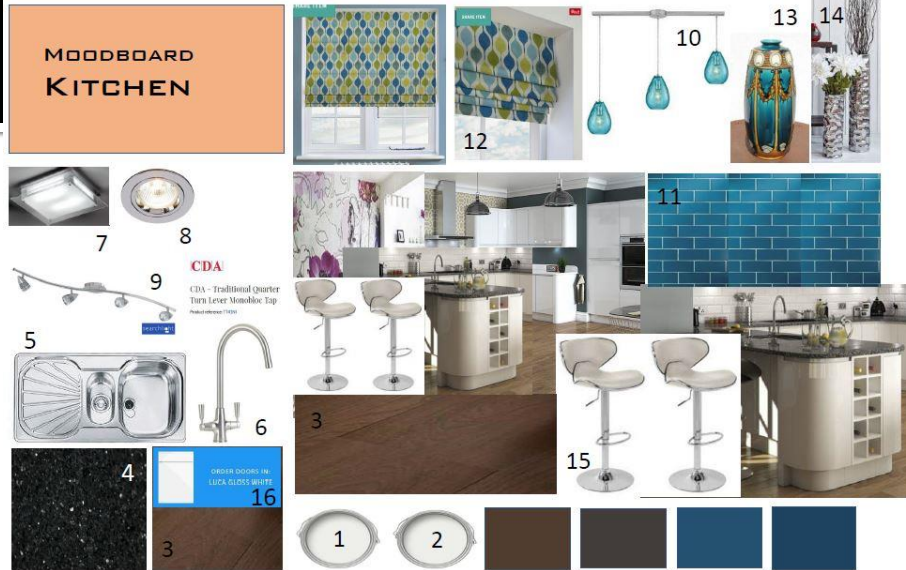
MOODBOARD LIVINGROOM



HOUSE DESIGN

The Interior Design

MOODBOARD KITCHEN

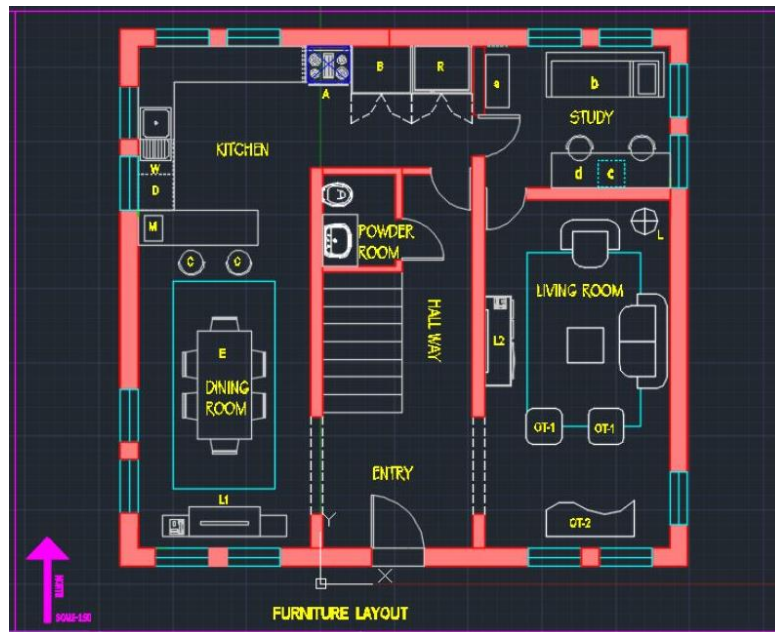


Moodboard for Kitchen & Dining

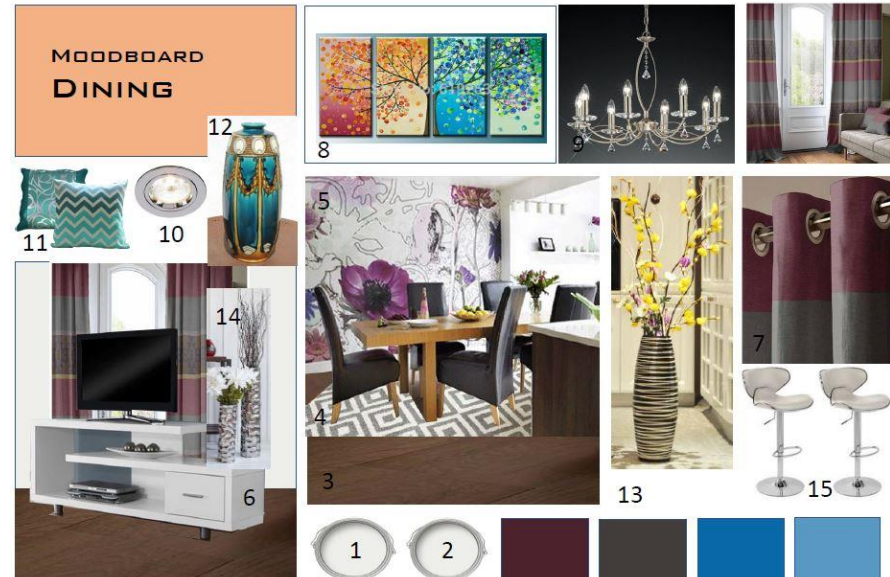
In this design, Kitchen is sandwiched between the Dining and Study room, hence it should have features common to both the rooms. It has the neutral color white which is common to both the study and dining. This white color makes it feel spacious and airy.

The elegance is added not only by the teal gloss oblong tiles but also by Lagoon satin nickel lights and the white high chairs of the breakfast counter. The black granite bench top makes it look stunning.

The teal tiles of the splash back, the Lagoon lights and the Verve blue Roman blinds help to relate the kitchen to the rest of the house. Much of the kitchen design is straight forward and contemporary.



MOODBOARD DINING



Interior Bungalow Design In Sketchup



Livingroom



Bedroom

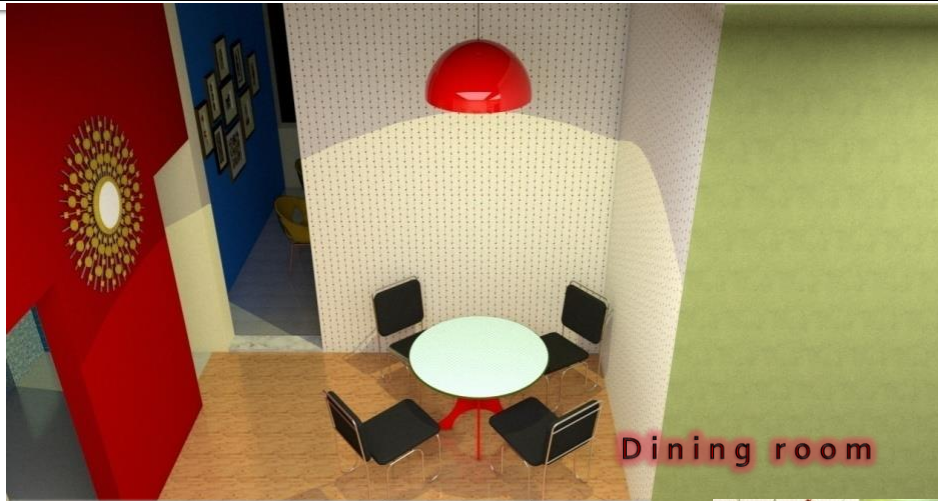


Plan



Bedroom

Interior Bungalow Design In Sketchup



Exterior Bungalow Design In Sketchup and Lumion



Top View



Side View



Front View



Front View



Rear View

SCHOOL DESIGN

The Architecture Design

Site Plan



Plan



Plan

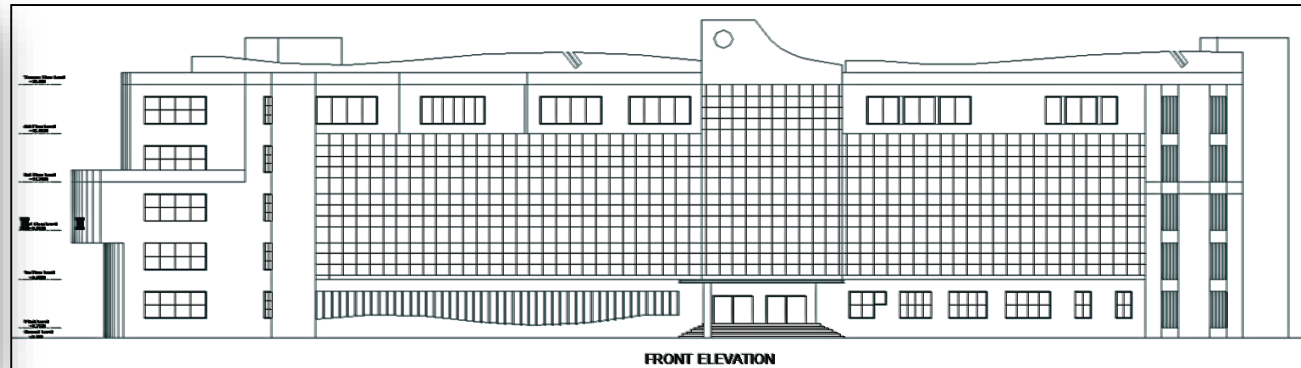


Front View

SCHOOL DESIGN

The Architecture Design

Facade Design



SCHOOL DESIGN

The Architecture Design

Facade Design

