



**PORTFOLIO**

ALI PEYROVI

# CURRICULUM VITAE

## LANGUAGES

English <small>EN</small>	●●●●●
Deutsch <small>DE</small>	●●●●●
Persian <small>Mother tongue</small>	●●●●●

## HANDS-ON

Photography	📷
Hand-Drawing	✍️

## EDUCATION

High school <small>Shahid Soltani</small>	📅 2013-2020
Bachelor Of Architecture <small>Science And Culture University</small>	📅 2017-2020

## SOFTWARE SKILLS

Auto Cad	●●●●●●
Revit	●●●●●●
Sketch Up	●●●●●●
3Ds Max	●●●●●●
V-ray	●●●●●●
Rhinoceros	●●●●●●
Photoshop	●●●●●●
Illustrator	●●●●●●
Microsoft Office	●●●●●●

## EXPERIENCE

<b>CG Artist</b> <small>Tarakan Shahr</small> Design new buildings or interior design I have good achievement for ex. Challenge in project at modeling or drawing 📅 2015-2017 - 📍 Karaj,Iran
<b>Design Team member</b> <small>Rahimian Architecture</small> Design, Drawing and Visualizing 📅 2017-2018 - 📍 Mashhad,Iran
<b>Teaching 3Ds Max + V-ray</b> <small>Science And Culture University</small> Improve my modeling and rendering skills 📅 2019-2020 - 📍 Tehran,Iran
<b>Architectural Portfolio design</b> <small>Private form</small> Enter the world of graphic design 📅 2017-2020 - 📍 Mashhad,Iran



## Ali Peyrovi

+98 9213591443  
[www.instagram.com/peyrovi\\_architecture](https://www.instagram.com/peyrovi_architecture)  
[Alipeyrovi5770@gmail.com](mailto:Alipeyrovi5770@gmail.com)  
Pakdel Ave, Mehrshahr, Karaj, Iran  
Date Of Birth : 13 March 1995  
Nationality : Iranian

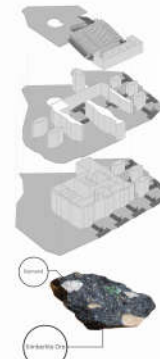
## ARCHITECTURAL PROJECTS

Modern Art Museum	Page 5
Residential Complex	Page 9
Recreational Complex	Page 13
Book city	Page 18

## OTHER ACTIVITIES

Graphic Design	Page 26
Portfolio Design	

# MODERN ART MUSEUM



### Modern Art Museum

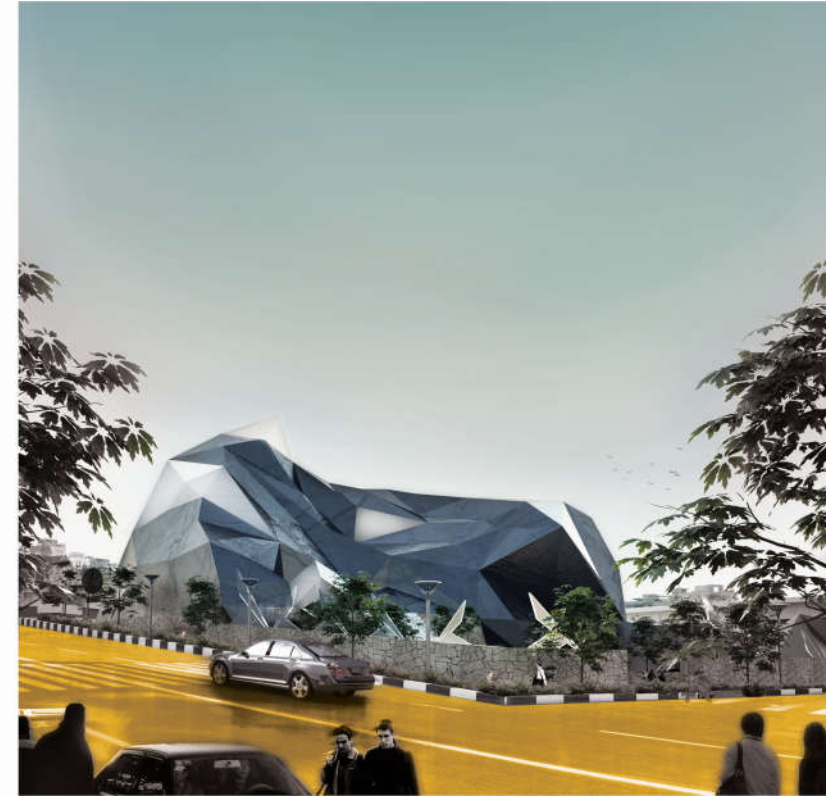
Site area: 1950 m<sup>2</sup>  
Location: Tehran, Iran  
Time: 2015 (Architecture Design 3)

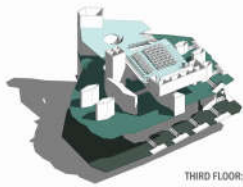
Building form should be something special and when someone sees that, should realize our topic and our form should be an equal value to artworks in galleries.

### FORM

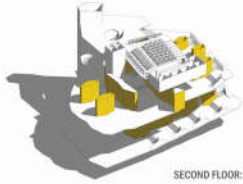
When we hear about museum we can imagine something special and valuable like diamonds. So I got my form from a kimberlite ore (special rock that we can extract diamonds from it).

Main material is fiber cement sheets but some parts are made of polycarbonate sheets. On the other hand we need no lights for our galleries because sun light can damage the artworks but we can use these translucent sheets to make our lobbies bright.

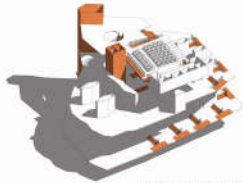




THIRD FLOOR: THEATER



SECOND FLOOR: GALLERY



FIRST FLOOR: GALLERY & OFFICE

## FLOORS

We made a long circulation for visitors. Floors are connected together with stairs and ramps. Also when you start with gallery in first floor and move upstairs to see others arts after a while you find your self in third floor. At the end you can choose to use a spiral stair to go back to main lobby in first floor or go to theater or you can use easily elevators.



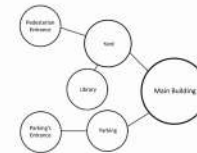
MAIN LOBBY



## LOCATION

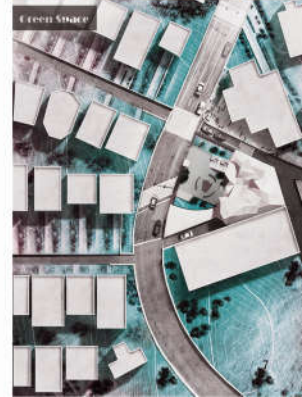
The Site is located on K1,5th alley , south girazan St, Hormozan St, Shahrake Ghods

## ENTRANCE DIAGRAM



## Modern Art Museum's site:

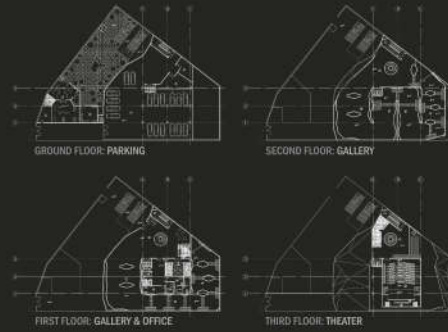
Site analysis always help us to begin our design process. in this project i analyze traffic and green spaces. I use traffic analysis to find the best entrance location for my project. We have an intersection in the street so we have to place entrance far from it. On the other hand placing pedestrian's entrance near the intersection help our museum to be seen.





### Modern Art Museum

Just like a modern art when you take a look at exterior Form you think it is a chaos but if you look carefully and go inside or take a look at project's plans you can realize that it isn't a chaos and everything has a reason.



## Residential Complex



## Residential Complex

Site area: 23000 m<sup>2</sup>  
 Location: Tehran, Iran  
 Time: 2017 (Architecture Design 5)

Residential projects can influence on people's lifestyle so in such cases we should be careful about communication and organization of buildings and landscape.

The most important thing in residential projects are people, so we decided to use a man modules (60cm\*60cm Square) to shape our spaces.

In this case we start from a kitchen in a single apartment because in a kitchen we cook, eat and we use it every single hour.

Second point is our relations between some apartment at the same floor. How can we make a private place for people who leave at the same floors but in different apartments?

On the other hands we need a useful spaces between our blocks to create a playground for children or some places for communication between neighbours we are going to lose our neighbourhoods these days.

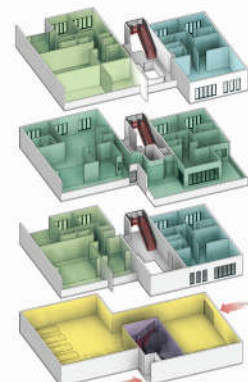
At the end we have to put these blocks in our site and we need some commercial and recreational spaces, also our landscape was formed.



### VERTICAL ACCESS

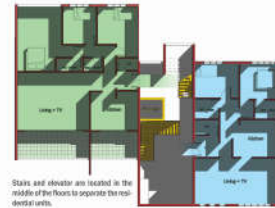
Blocks have two vertical access:  
 1. Elevators  
 2. Stairs

Stairs have not a special small boring box, there is a void to bring the light into our stairs and lobby also on other floors stairs have a view to our neighbourhood.

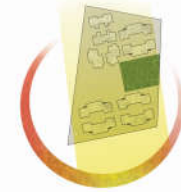


### FLOORS

Ground Floor: Parking & Lobby  
 First Floor: Plan Type A (100sq) + Plan Type B (150sq)  
 Second Floor: Plan Type C (220sq)  
 Third Floor: Plan Type A (100sq) + Plan Type B (150sq)

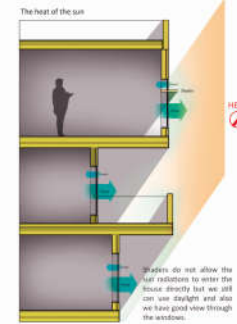


Stairs and elevator are located in the middle of the floors to separate the residential units.



### SUN RADIATION

The sun's radiation in Tehran (Iran) is almost from south-east and specially in summer strong radiation from south can bother people on the other hand we have a serious problem during the sunset because the sun shines directly into the apartments, so the blocks are oriented toward the east, also some kinds of shades for the southern windows are considered.

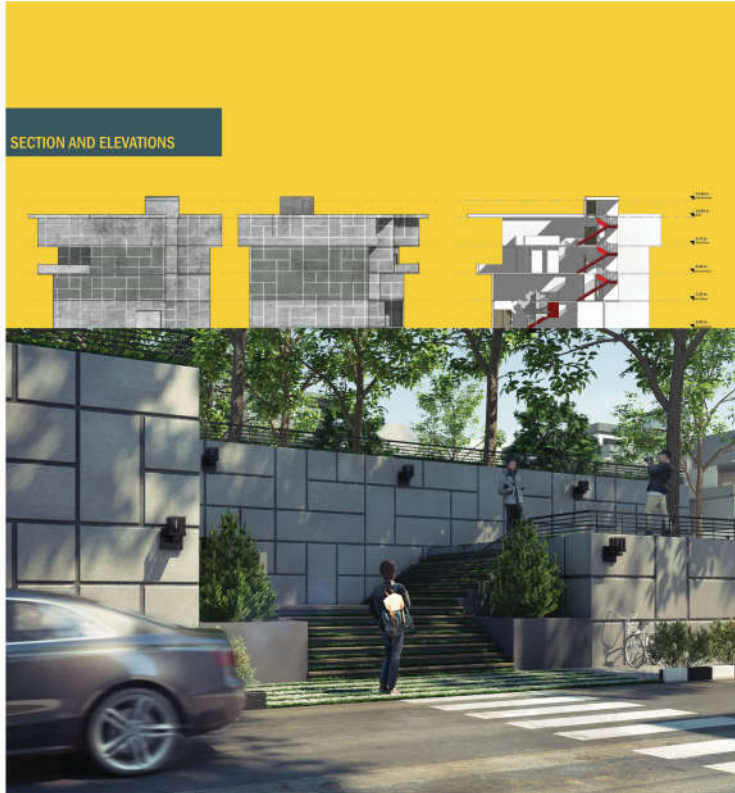


## Residential Complex

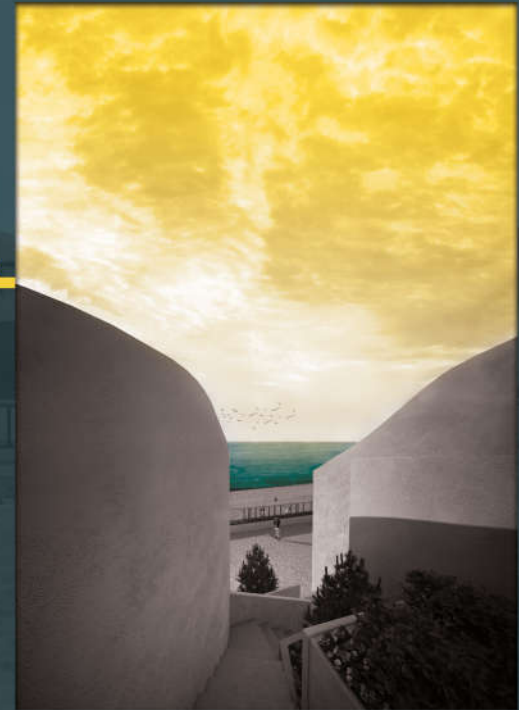
**Neighborhood Center**  
Last thing is creating a space for communication between people or for exercise, running and taking a seat and making themselves relaxed.



**SITE PLAN**  
6 blocks are designed in 4 different types. Every block has local privacy measures so strangers can be recognized.



## Recreational and Tourist Complex





### DESIGN PROCESS

- 1-Regarding the wet climate of the site creating slope on the roof can help us.
- 2-In order to fit the form with nature, instead of using a hard form with a steep roof, the curvature form is used.
- 3-Designing a variety of different spaces with different qualities and privacy for each unit are important points of design for this project.



### Recreational and Tourist Complex

Site area: 21500 m<sup>2</sup>  
 Location: Anzali harbor,Iran  
 Time: 2017 (Bachelor Thesis)

Every body need to relax and recreation after hard-working,a quiet place near a see can be a good choice but how can we design a building that matches its environment? Sustainable buildings are the best option for this context.Buidings using the technology of the day but the appearance is very simple.

### CLIMATIC DESIGN

For climate-based design, it has been tried to use case examples that are consistent with the climate. Several points have been made to design in a moderate and humid climate:

- 1-Elevation from the ground that prevents moisture from entering the building
- 2-Creating openings in different directions causes the loss of moisture in the building
- 3-Creating a steep roof in the face of rain

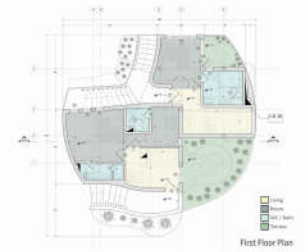
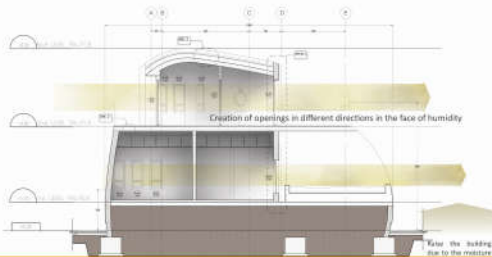
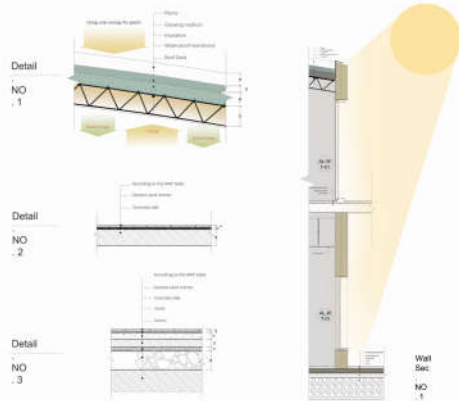
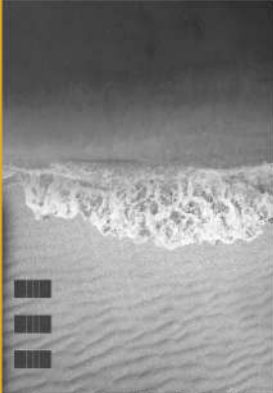






**SOLAR ENERGY**

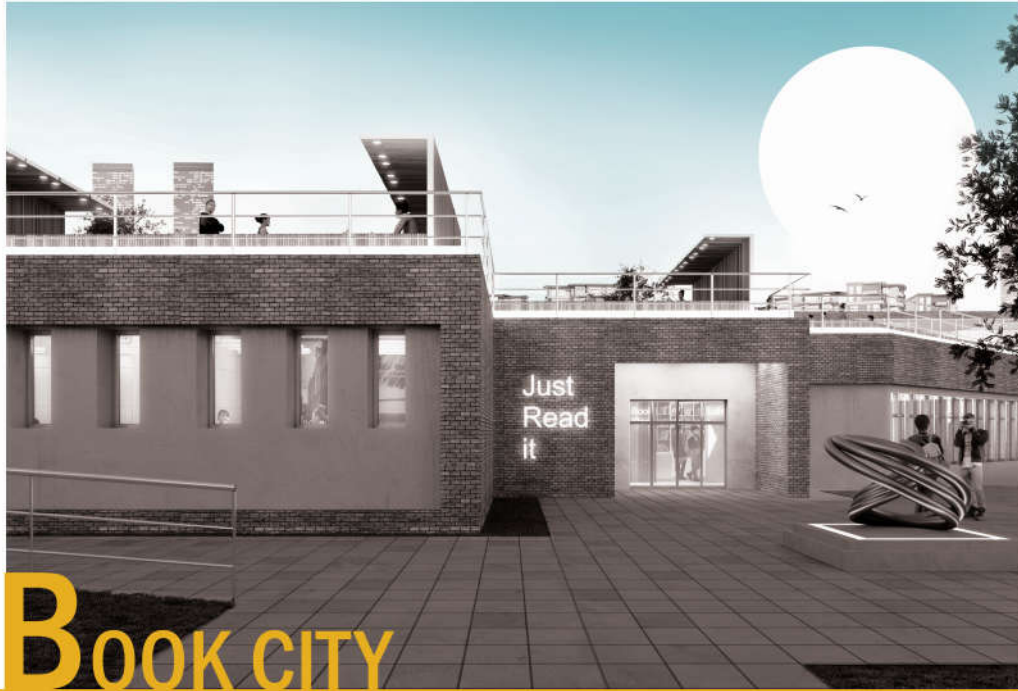
The entire building uses solar energy generated by solar cells.



**PLAN ANALYZE**

The most important point in the design of these buildings has been the creation of a variety of different qualities

- 1- Design of terraces with various qualities
- 2- Bathroom design with sea view



# BOOK CITY



## Book city

Site area: 13500 m<sup>2</sup>  
 Location: Tehran, Iran  
 Time: 2017

Reading Books affects people's lives. That's why libraries have to be attractive spaces. The space for study is not the same for everyone, so spaces of varying quality must be designed. Open, semi-open and closed spaces make people stay longer in the libraries.





**SITE**

The site is on Kangar St, near Lalit Park and next to the Museum of Contemporary.  
 Photovoltaic systems are the electricity supplier of whole complex.

The collection includes:

- An open gallery at the entrance
- Parking
- Main study space
- Kids' study area
- Book store
- Open and semi-open rooms
- Study space on the water

**Legend:**

- MAIN STUDY SPACE
- LOBBY
- BOOK STORE
- OFFICE
- KIDS' STUDY ROOM
- THEATER

**Ground Floor Plan:** Shows the main study area, parking, and entrance. Labels include 'Kids' study area' and 'Parking'.

**Basement Floor Plan:** Shows the theater and other underground spaces. Labels include 'Theater' and 'A1'.



**DIFFERENT SPACES ON SITE**

Areas designed for outdoor study in relation to natural elements such as plants and water. These spaces are associated with pathways that stimulate people's sense of movement.



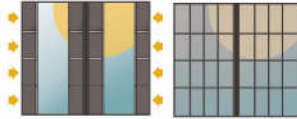
### MATERIAL

Library materials should be carefully selected because different colorful materials may distract people who are reading. On the other hand, the book is an element of authenticity, so the material used would better convey this sense of authenticity.



### LIGHTING

Daylight is one of the best lighting for reading, but if not properly controlled, it can quickly tire the eyes of those studying. As a result, the library windows are designed in two shells, and the second shell can move and prevent excessive light from entering in direct light.



### DIFFERENT STUDY HABITS DIFFERENT AGES

Architecture is designed according to human habits and behaviors, so their needs cannot be met without regard to differences.



GRAPHIC DESIGN  
Portfolio and CV Design



**THANK YOU**