



SPECTACLE SOCIETY

CONCEPT DESIGN

PROJECT INFORMATION

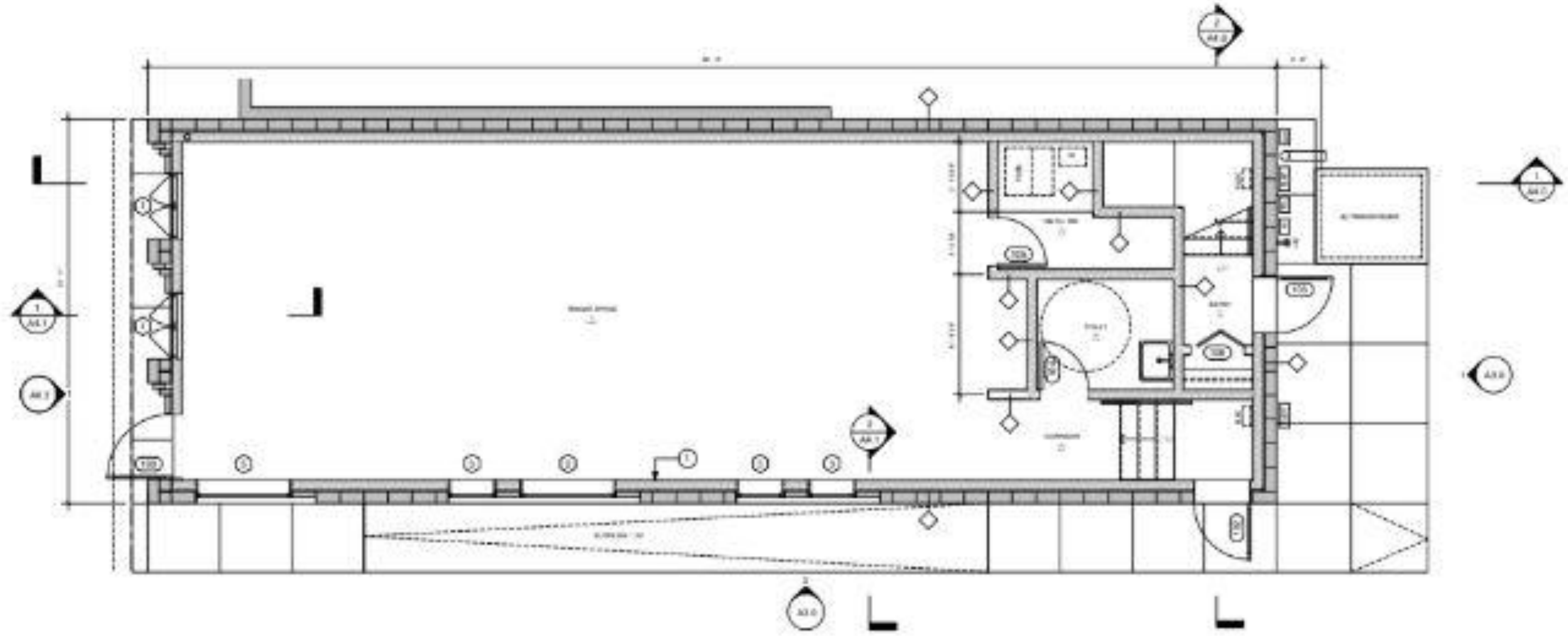
1512 BAGLEY AVE.
DETROIT, MI 48216

SCOPE

The subject space is a newly built 1,035 square foot white box mercantile tenant space. The Client is looking to build-out the space for an optical store that specializes in glasses for small and large clients. She is particularly interested in ADA accessibility so that people of all shapes, sizes and abilities can be comfortably serviced in the space. She needs a functional area to do adjustments, but also a concealed the working area, and appropriate shelving for beauty products.

SPECTACLE SOCIETY | CONTEXT & SCOPE

GROUND FLOOR RETAIL SPACE



EXISTING FLOOR PLAN

NOT TO SCALE





SPECTACLE SOCIETY

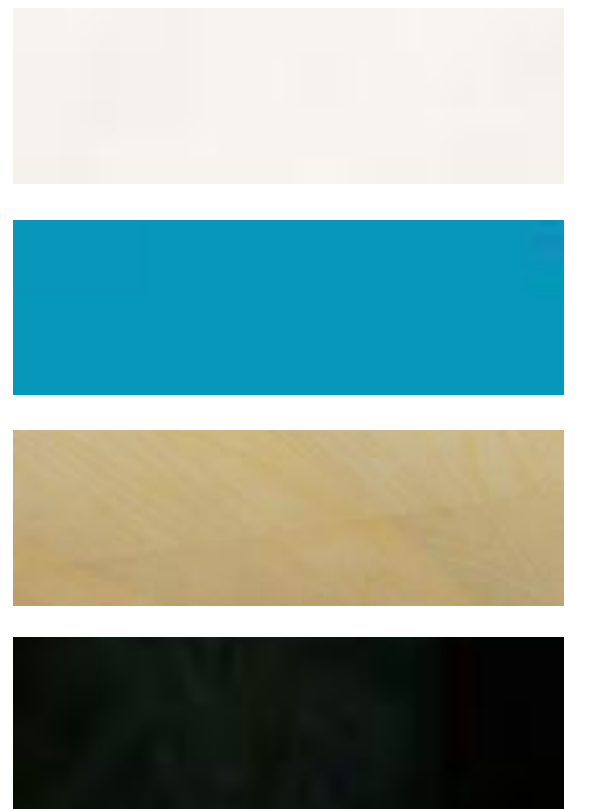
DESIGN INSPIRATION

DESIGN STATEMENT

Spectacle Society is a warm bright and welcoming place where everyone would like to spend an hour. Custom millwork display cases that reference the architectural stepped entry doors and the curvilinear shapes of eyeglasses. Handcrafted and unique display furniture enforces the bespoke brands and craftsmanship of the glasses Spectacle Society sells. Local artwork and approachable materiality anchor Spectacle Society to its neighborhood.

INTERIORS TEMPLATE | MOOD BOARD

SUBTITLE



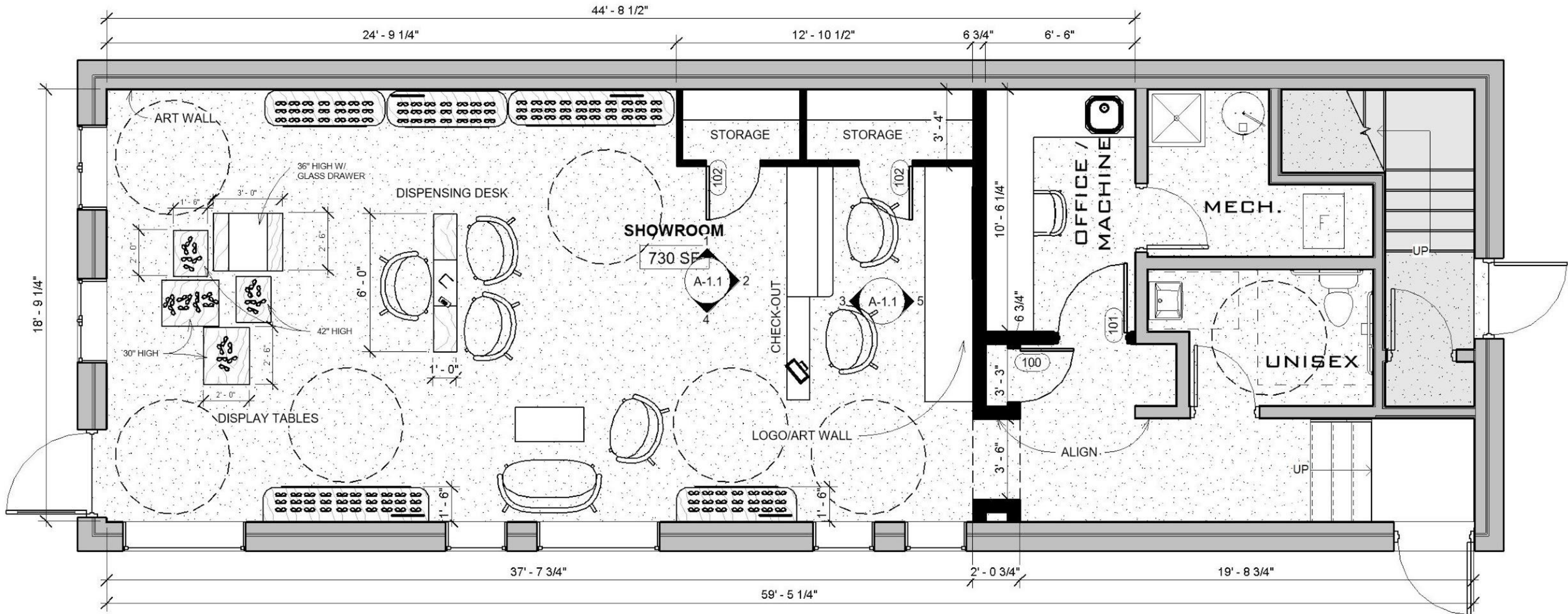


SPECTACLE SOCIETY

DESIGN IMPLEMENTATION

SPECTACLE SOCIETY | SHOWROOM PLAN

GROUND FLOOR RETAIL SPACE



FLOOR PLAN

NOT TO SCALE



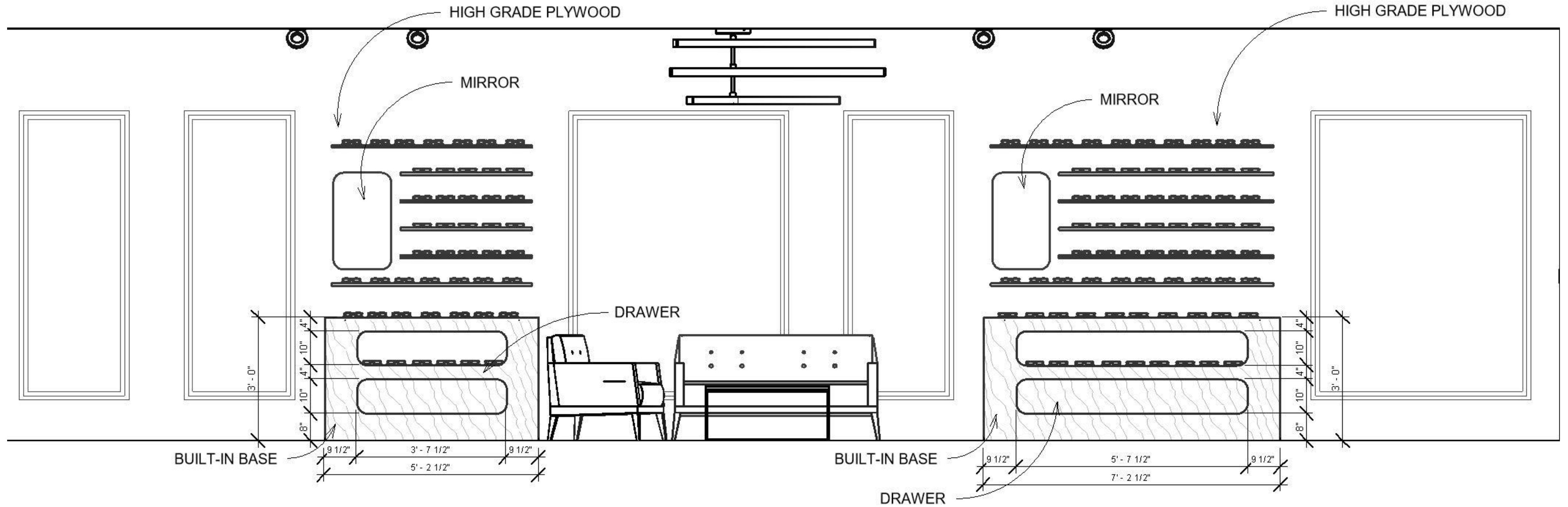




Spectacle Society

INTERIORS TEMPLATE | INTERIOR ELEVATIONS

MILLWORK BUILT-IN



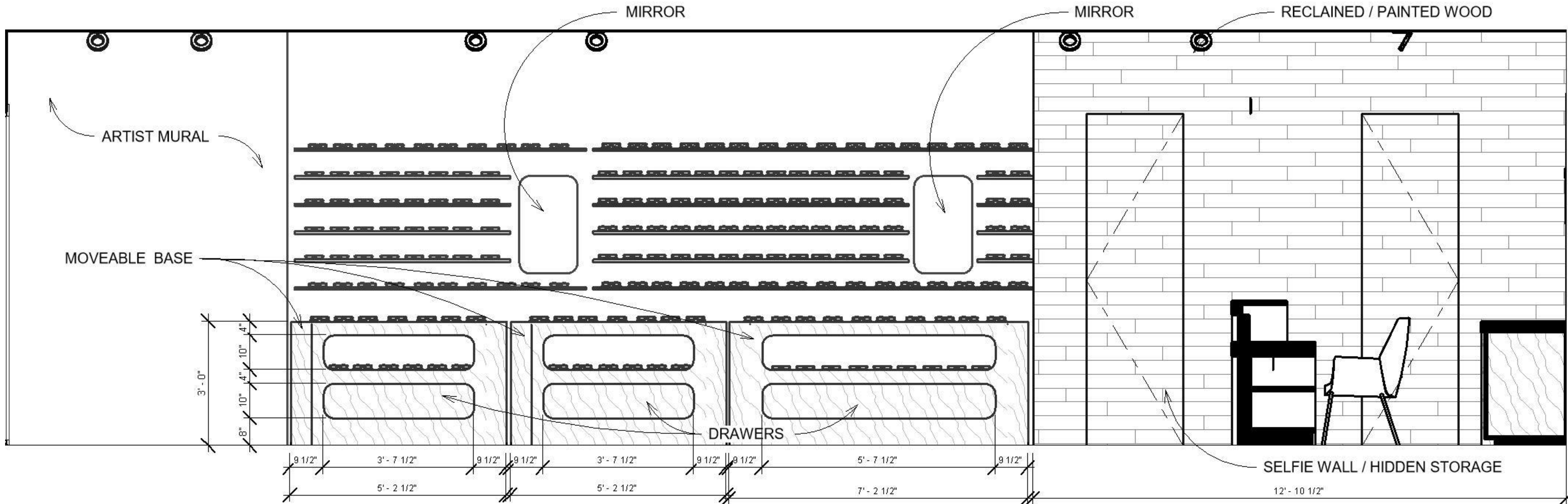
A

SHOWROOM - WEST ELEVATION

NOT TO SCALE

INTERIORS TEMPLATE | INTERIOR ELEVATIONS

MILLWORK BUILT-IN



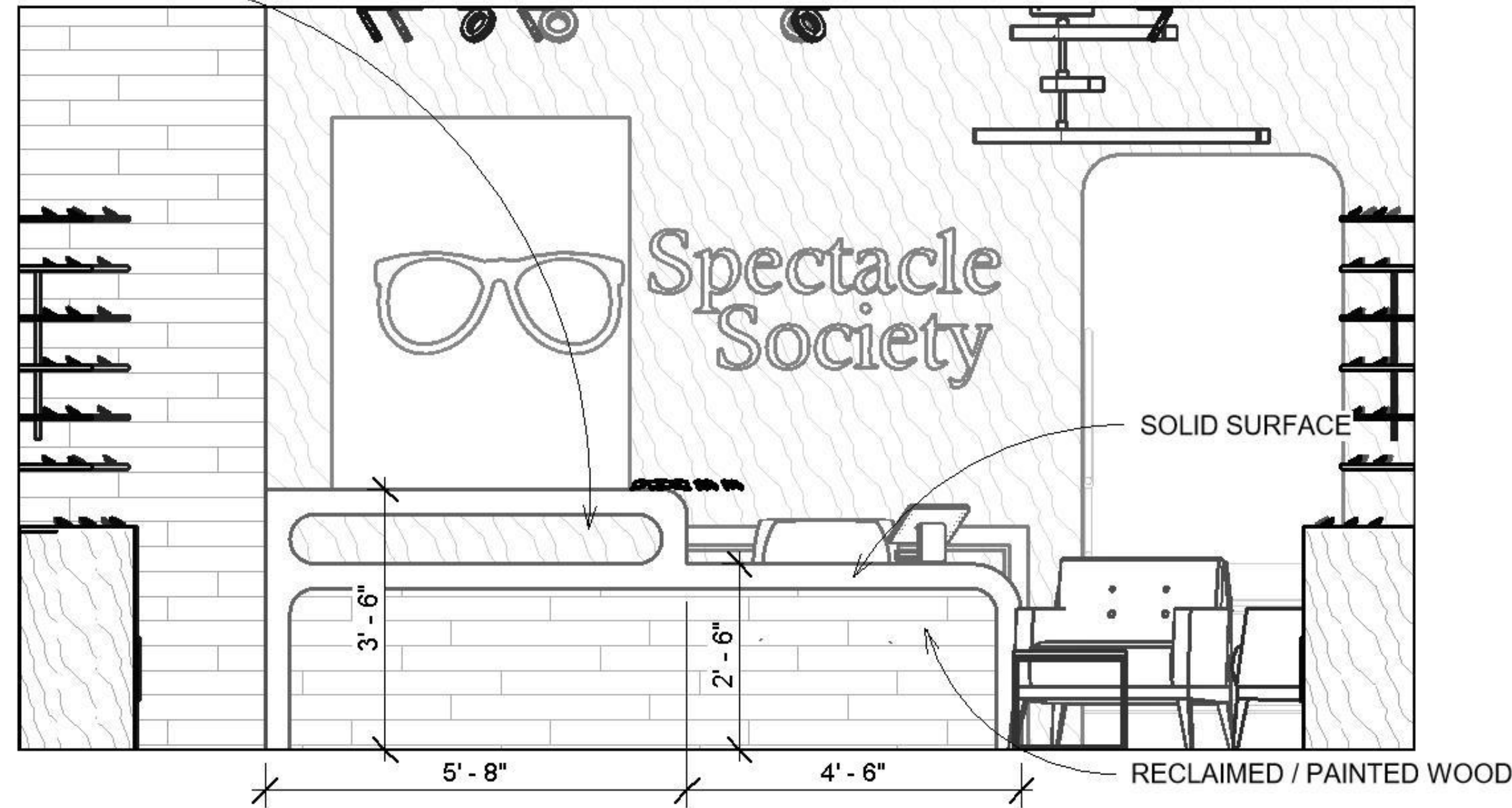
A SHOWROOM - EAST ELEVATION

NOT TO SCALE

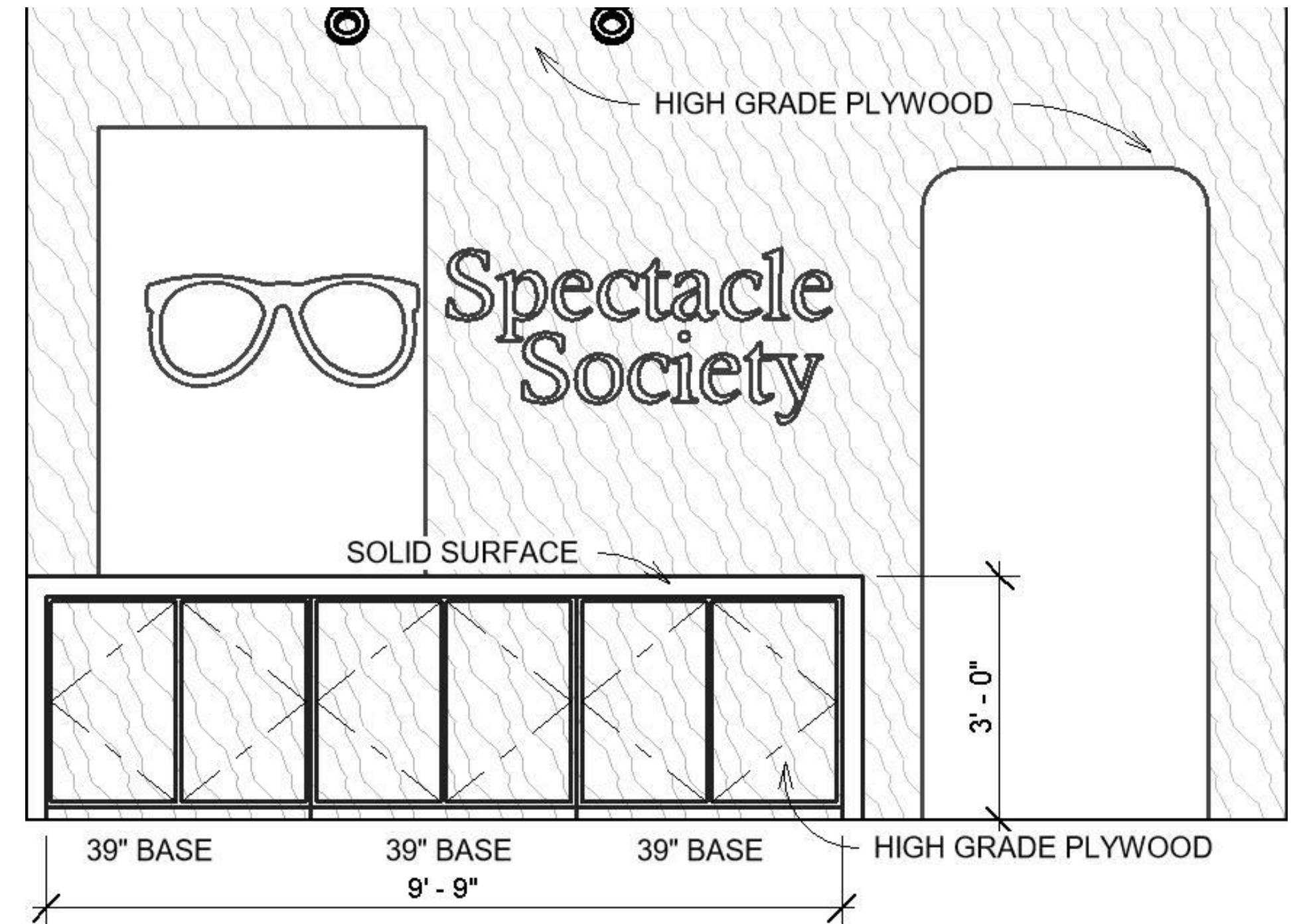
INTERIORS TEMPLATE | INTERIOR ELEVATIONS

MILLWORK BUILT-IN

HIGH GRADE PLYWOOD



A SHOWROOM - NORTH ELEVATION
NOT TO SCALE



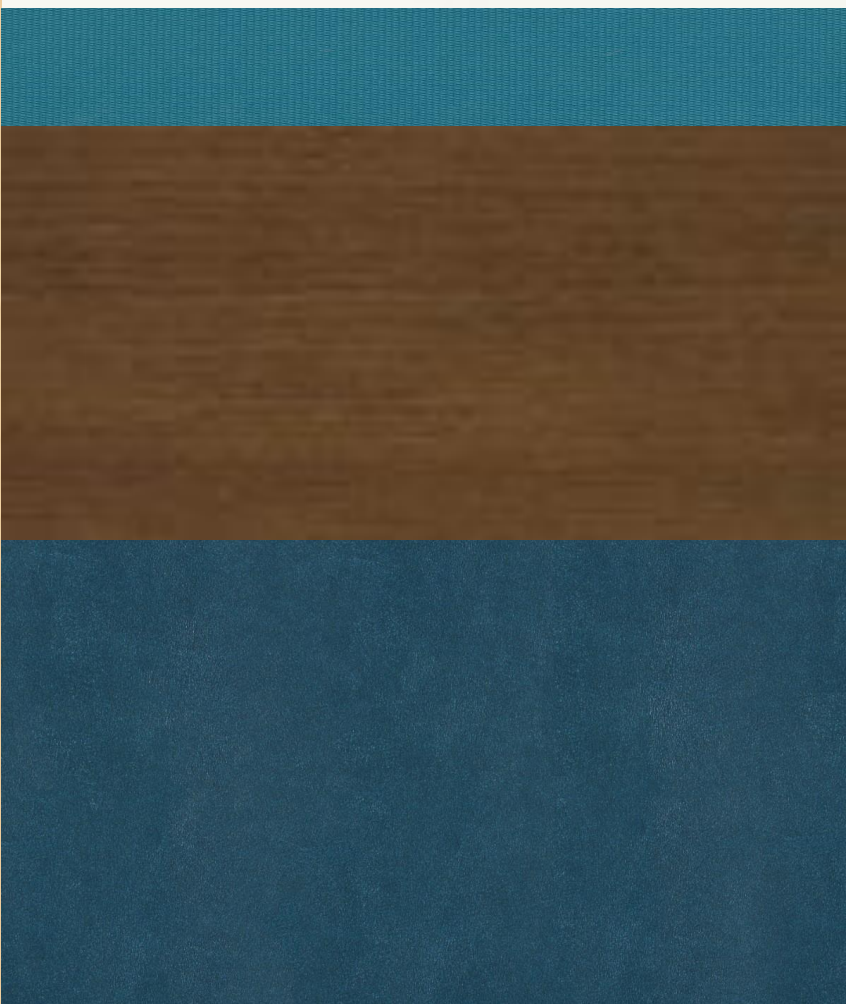
B LOGO WALL ELEVATION
NOT TO SCALE

SPECTACLE SOCIETY

FINSHES



SPECTACLE SOCIETY | MATERIAL BOARD



SPECTACLE SOCIETY | SHOWROOM SPECS

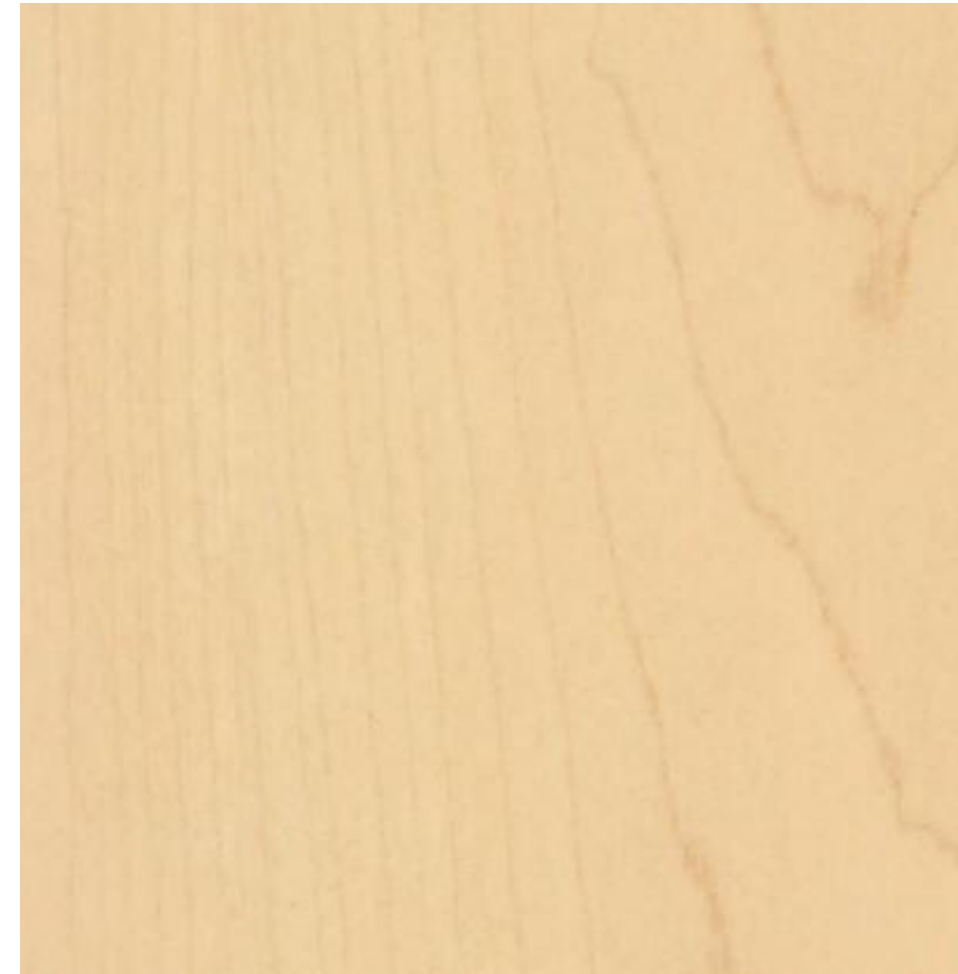
MATERIALS



LVT-01

NAME: POLISHED CONCRETE
MAKER: MILLIKEN
SIZE: 36" X 36"
PRODUCT #: POL55 TROWEL
FINISH/SHEEN: 60 MATTE FINISH

NOTES: MAIN FLOOR



WLAM-01

NAME: HARD ROCK MAPLE
MAKER: FORMICA
COLLECTION: HIGH PRESSURE LAM.
PRODUCT #: 86992-58
FINISH/SHEEN: MATTE

NOTES: WOOD LAMINATE



WD-01

NAME: LOST COST WEATHERED
MAKER: TERRA MAI
COLLECTION: NA
PRODUCT #: 583
FINISH/SHEEN: UNFINISHED

NOTES: WOOD ACCENT WALL



P-01

NAME: HIGH REFLECTANCE WHITE
MAKER: SHERWIN WILLIAMS
COLLECTION: NEUTRALS
PRODUCT #: SW 7757
FINISH/SHEEN: FLAT

NOTES: WALLS & CEILING

SPECTACLE SOCIETY | FURNITURE



LEAP PLUS

Leap Plus features an 18% larger seat and 12% larger back, thicker and wider seat cushion, high-pressure cylinder, wider diameter base to meet the needs of larger users.



SPECTACLE SOCIETY | FABRIC SPECS

FABRICS



FAB-01

NAME: ARISSA LOUNGE CHAIR
MAKER: KI
WEIGHT CAPACITY: 750 LBS
FINISH: FIN-01
FABRIC: FAB-01

NOTES: GUEST CHAIR



FAB-02

NAME: ARISSA LOVESEAT
MAKER: KI
WEIGHT CAPACITY: 750 LBS
FINISH: FIN-01
FABRIC: FAB-01

NOTES: LOVESEAT



FAB-03

NAME: LEAP PLUS
MAKER: STEELCASE
WEIGHT CAPACITY: 500 LBS
FINISH: FIN-02
FABRIC: FAB-02

NOTES: TASK CHAIR



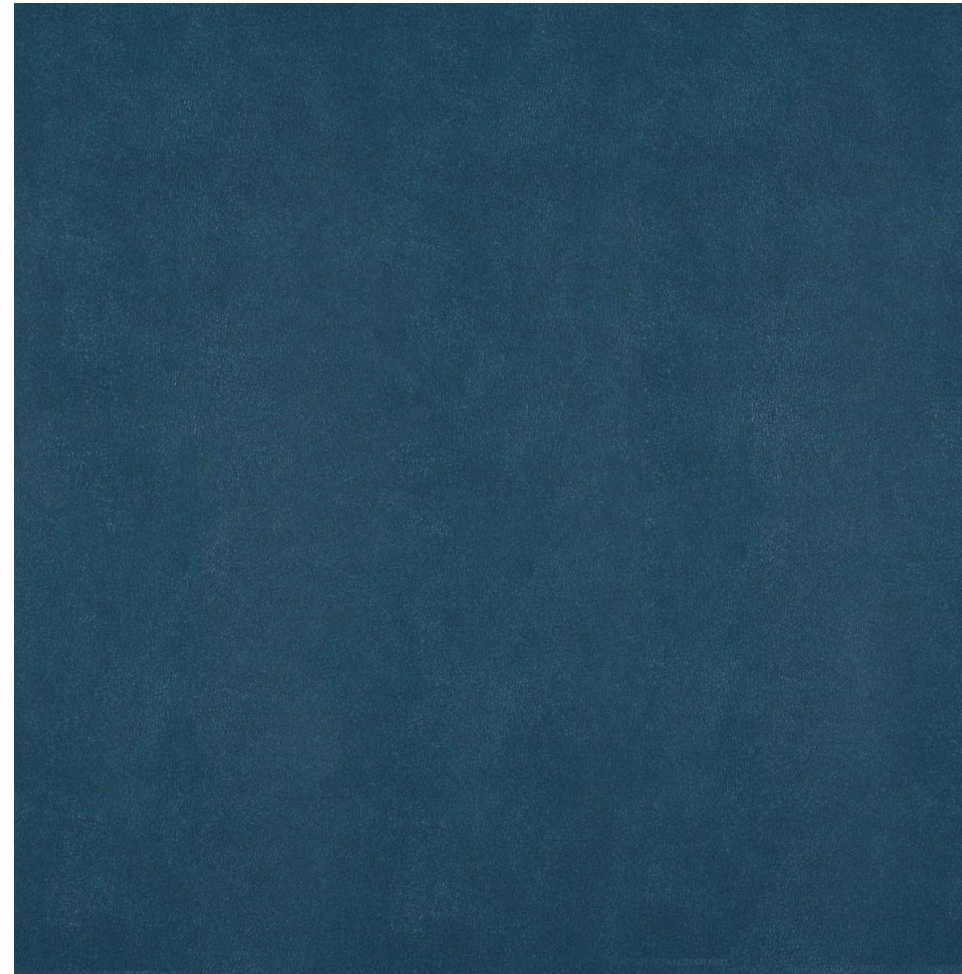
FAB-04

NAME: MOON FREESTANDING SQUARE
MAKER: AQUANOVA
WEBSITE: WWW.AGMHOMESTORE.COM
SKU: MOOMIR-09
COLOR: BLACK

NOTES: GUEST MIRROR

SPECTACLE SOCIETY | FABRIC SPECS

FABRICS



FAB-01

NAME: BURNISH

MAKER: KI

WIDTH: 54"

ABRASION: 250,000 DOUBLE RUBS

COLOR: NILE

NOTES: GUEST CHAIRS



FIN-01

NAME: WOOD FINISH

MAKER: KI

COLOR: RIVER CHERRY ON BEECH

NOTES: GUEST CHAIR WOOD



FAB-02

NAME: COGENT: CONNECT

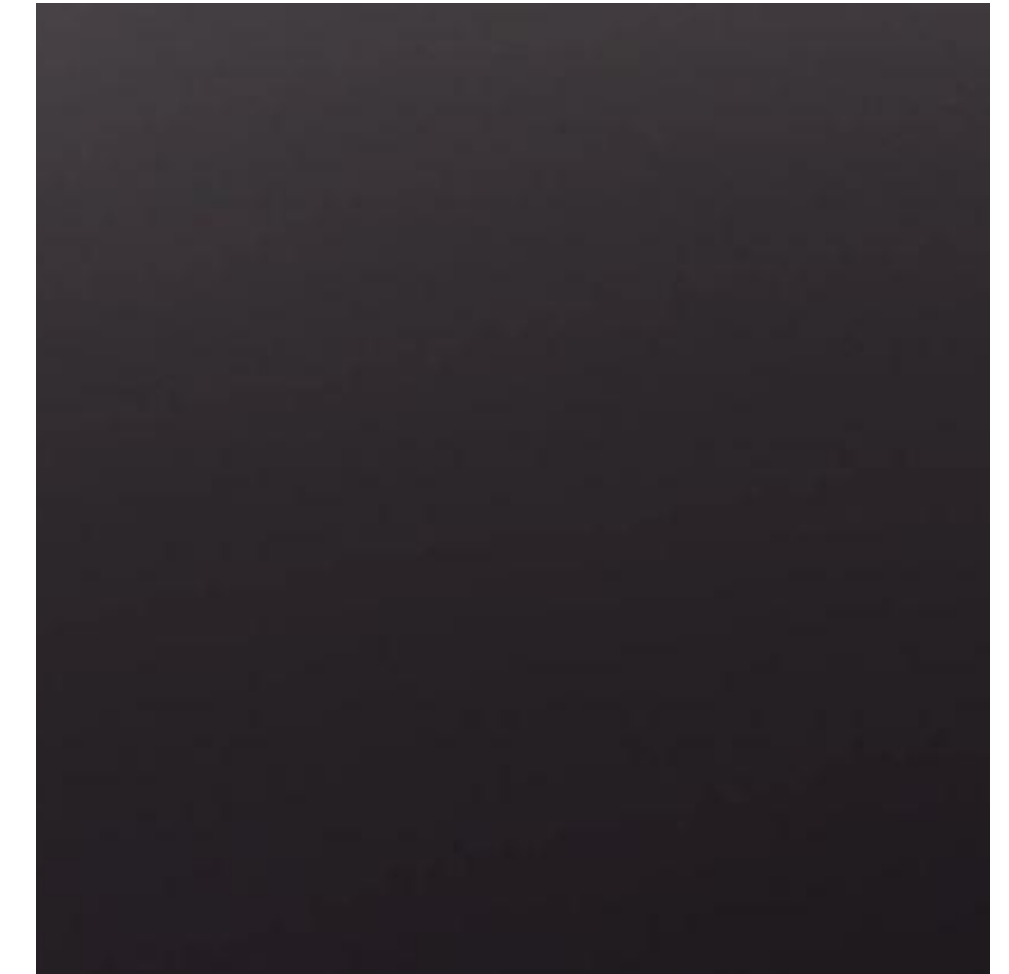
MAKER: STEELCASE FABRICS

WIDTH: 54"

ABRASION: 100,000 DOUBLE RUBS

COLOR: 5S21 BLUE JAY

NOTES: TASK CHAIR CUSHION



FIN-02

NAME: MIDNIGHT

MAKER: STEELCASE

COLOR: SOLAR BLACK

NOTES: FRAME FINISH

SPECTACLE SOCIETY | BATHROOM SPECS

MATERIALS



CT-01

NAME: FOREST
MAKER: PORCELANOSA
COLOR: FRESNO
PRODUCT #: 100226140
FINISH/SHEEN: MATTE

NOTES: RESTROOM FLOOR TILE



CT-02

NAME: 6" X 12"
MAKER: FIRECLAY
COLLECTION: CLACITE
PRODUCT #: CALCITE-6x12
FINISH/SHEEN: MATTE W/ ENGOBE

NOTES: RESTROOM WALL TILE



WC-01

NAME: CARNIVAL
MAKER: LBI BOYDE DESIGN RESOURCE
COLOR: LEMON MERINGUE
PRODUCT #: G1-06-02

NOTES: BREAK ROOM CABINETS



SPECTACLE SOCIETY | BATHROOM SPECS

MATERIALS



P-01

NAME: WIDESPREAD FAUCET
MAKER: KOHLER
COLLECTION: PURIST
PRODUCT #: K-14406-4-BL
FINISH/SHEEN: MATTE BLACK

NOTES: RESTROOM FAUCET



P-02

NAME: 20" X 18" WALL MOUNT
MAKER: KOHLER
COLLECTION: SOHO
PRODUCT #: K-2053-0
FINISH/SHEEN: WHITE

NOTES: RESTROOM SINK



P-03

NAME: GRAB BAR
MAKER: KOHLER
COLLECTION: COMPONENTS
PRODUCT #: K-78387-BL
FINISH/SHEEN: MATTE BLACK

NOTES: GRAB BARS



P-04

NAME: VANITY MIRROR
MAKER: UTTERMOST
COLLECTION: CROFTEN
PRODUCT #: 09573
FINISH/SHEEN: BLACK

NOTES: SHOWROOM & RESTROOM MIRRORS

SPECTACLE SOCIETY | LIGHT FIXTURE SPECS

SUBTITLE

FIXTURES



FIXT-01
NAME: Chandelier
MAKER: Eureka
COLLECTION: Swtich
PRODUCT #: 7470X
FINISH/SHEEN: Black

NOTES:



FIXT-02
NAME: Surface Mount
MAKER: Eureka
COLLECTION: Fleet
PRODUCT #: 4560
FINISH/SHEEN: Black - Black

NOTES:



FIXT-03
NAME: Pendant
MAKER: Eureka
COLLECTION: Dial
PRODUCT #: 2060
FINISH/SHEEN: Black - Black

NOTES:

THANK YOU