



architecture | **portfolio**

George onyango
Selected works 2017-2021

MIXED USE DEVELOPMENT

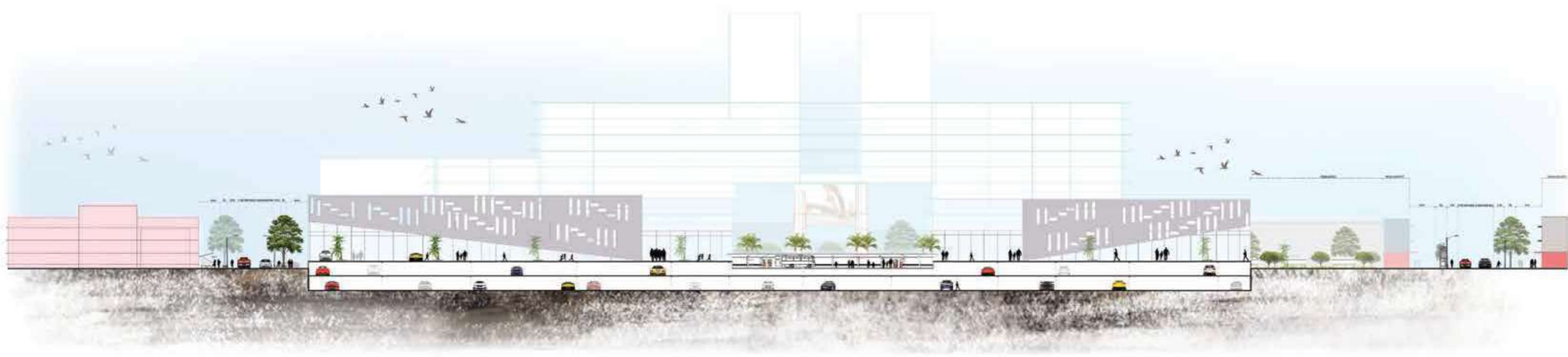


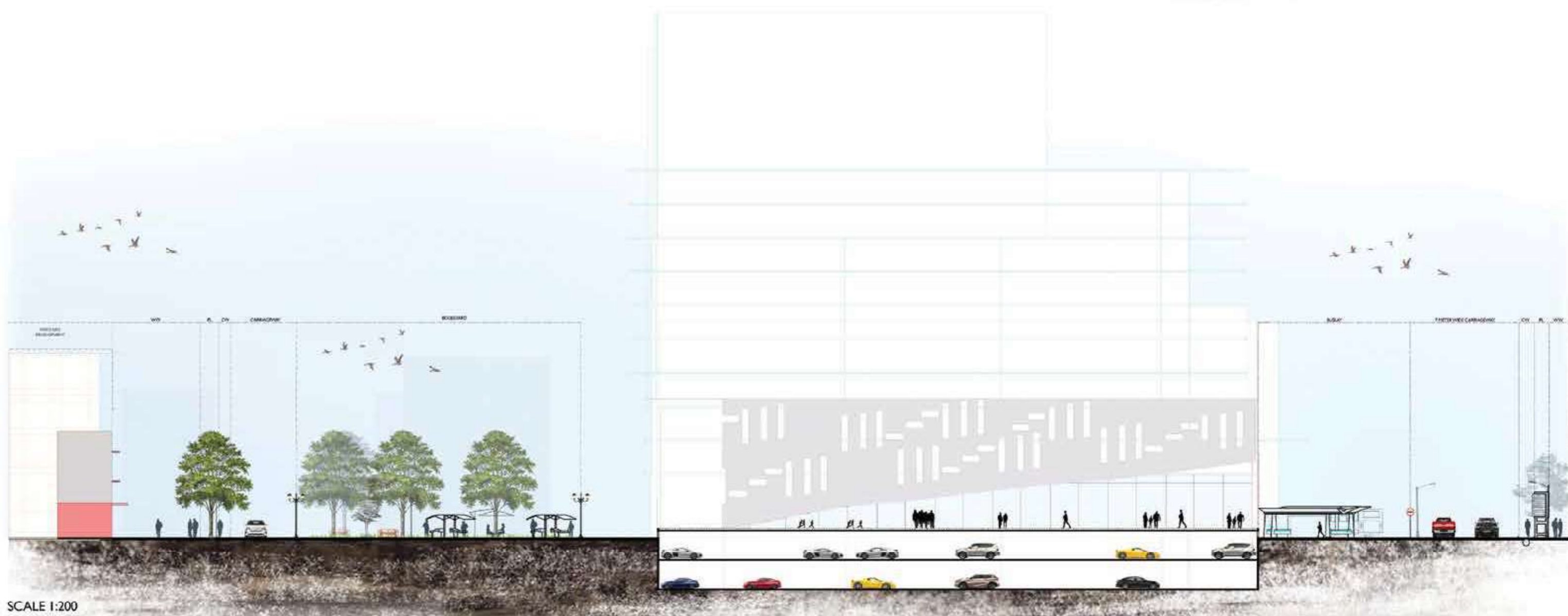
This proposed MUD, located at Nairobi West, introduces interventions to improve the urban context of the area, improve carriageway to promote social interaction and walkability and also incorporate pedestrian oriented public realm.





RIVERFRONT INTERVENTION
SCALE 1:50





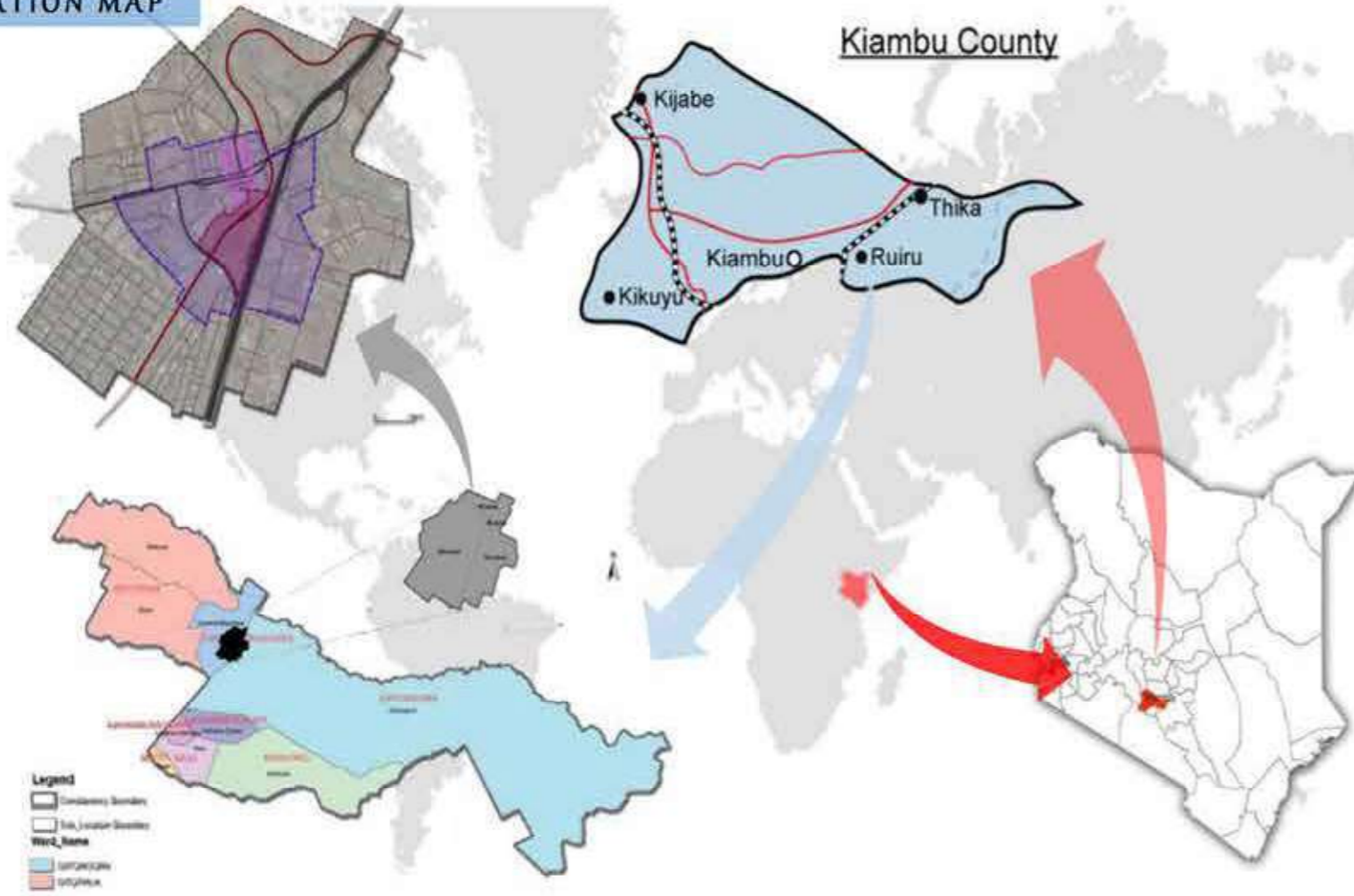
INTEGRATED STRATEGIC URBAN DEVELOPMENT PLAN (ISUDP)

NAIROBI -THIKA TRANSPORT CORRIDOR(N TTC)

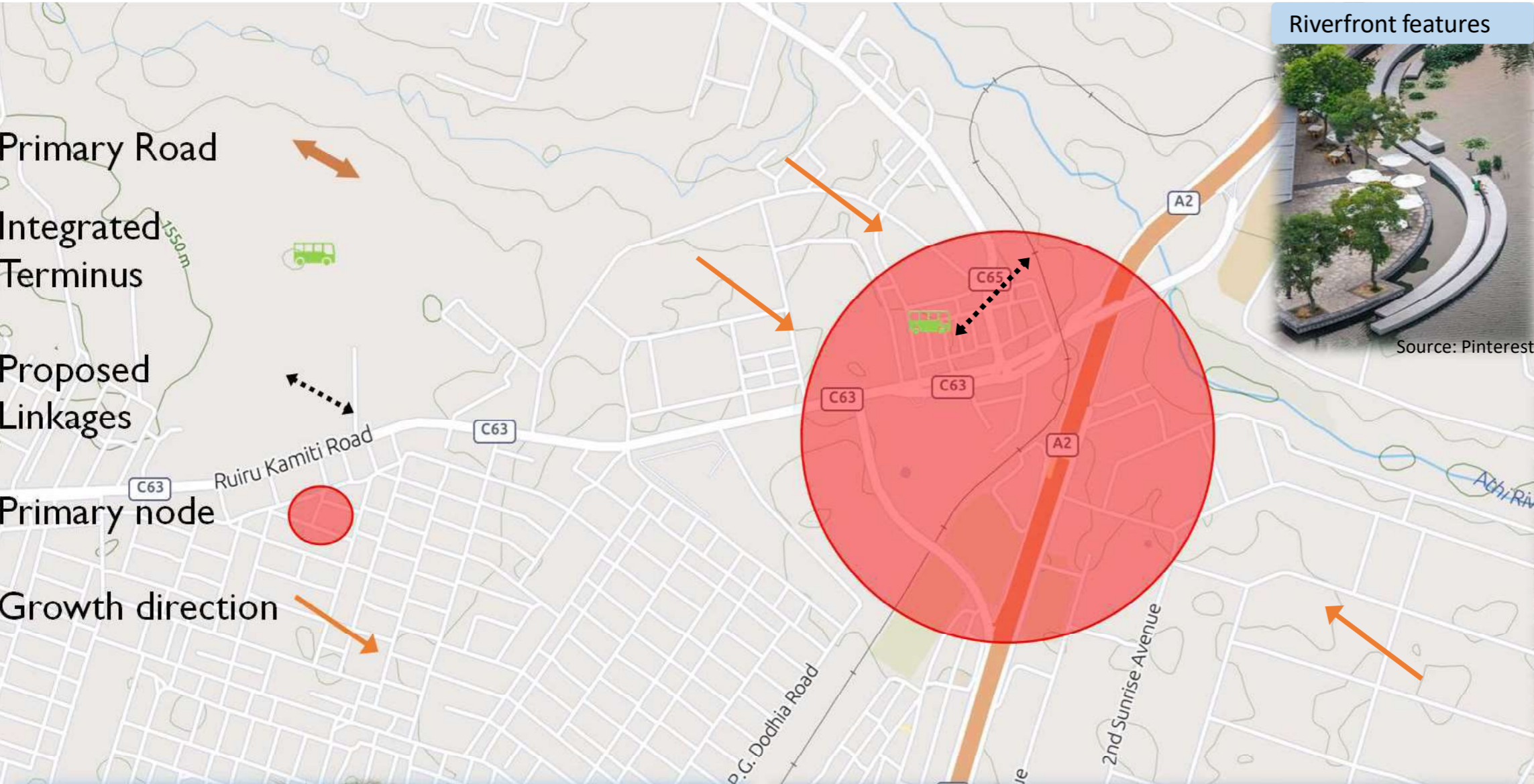
OVERVIEW

This project, funded by the Government of Kenya, in support by the World Bank organization, involves interventions on carriageways located in the Nairobi metropolitan region, its purpose being creating a pedestrian friendly transport development, while also incorporating the Bus Rapid Transit system (BRT), which is in accordance with vision 2030.

LOCATION MAP



TRANSIT ORIENTED DEVELOPMENT (TOD)



Riverfront features



RUIRU STATION

- .High density mixed use development.
- .Pedestrian friendly streets.
- .Sufficient on-site parking.
- .Pedestrian protection
- .Integrated transport terminus

Pedestrian protection



Integrated railway terminus



Integrated bus terminus



Pedestrian oriented public realm



Carriageway Section R-0



LAYOUT SITE-Intermodal Facilities



Source: chapelboro.com

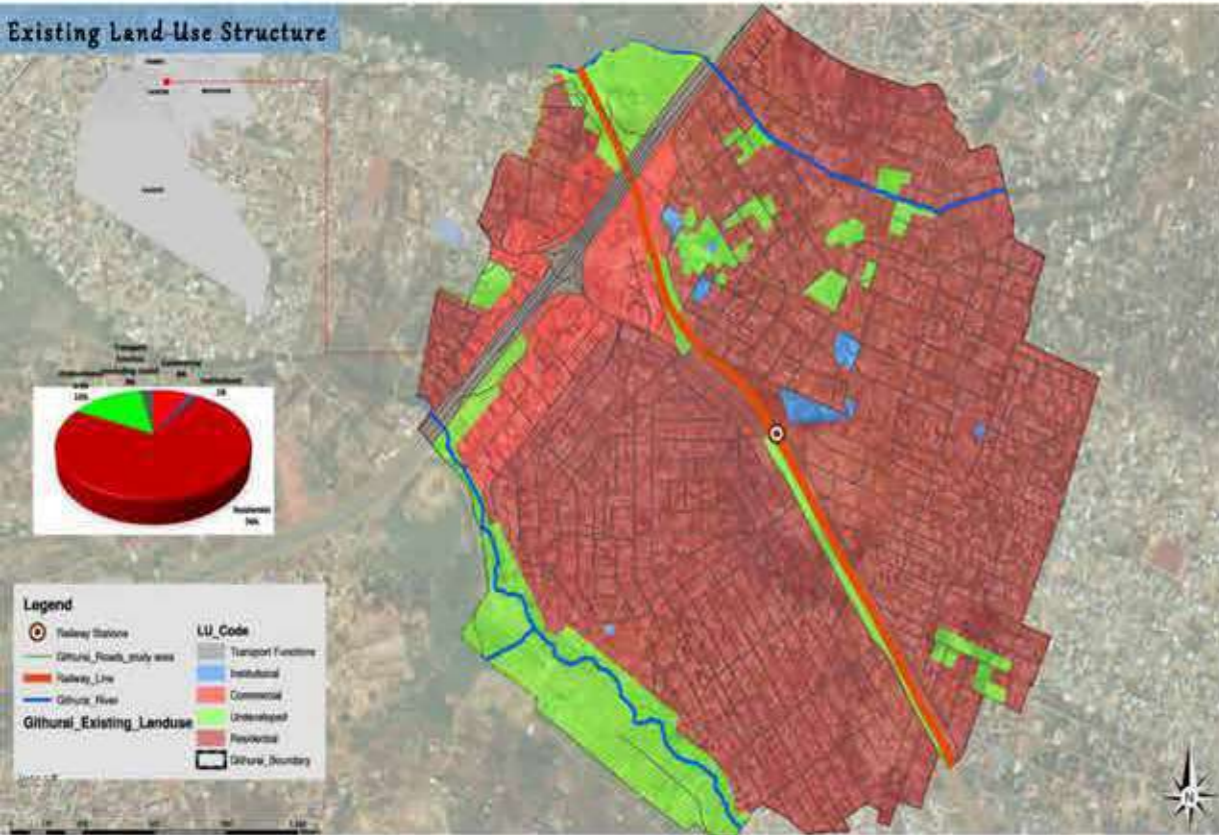


Source: ananas.com

	sq. Meters	acres
PROJECT AREA	137.717,94	34,03
BRT AREA	11.263,43	2,78
RAILWAY AREA	7.435,35	1,84
INTERMODAL AREA	5.326,20	1,32
TOTAL	161.742,92	39,97

NTTC- GITHURAI STATION

Existing Land Use Structure



Underground Park and Ride



Open Market



Proposed Situation



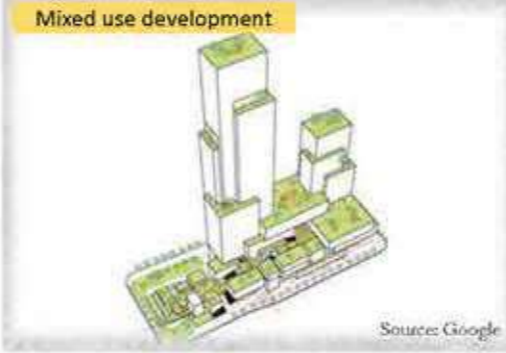
Integrated bus terminus



Pedestrian friendly street



Mixed use development



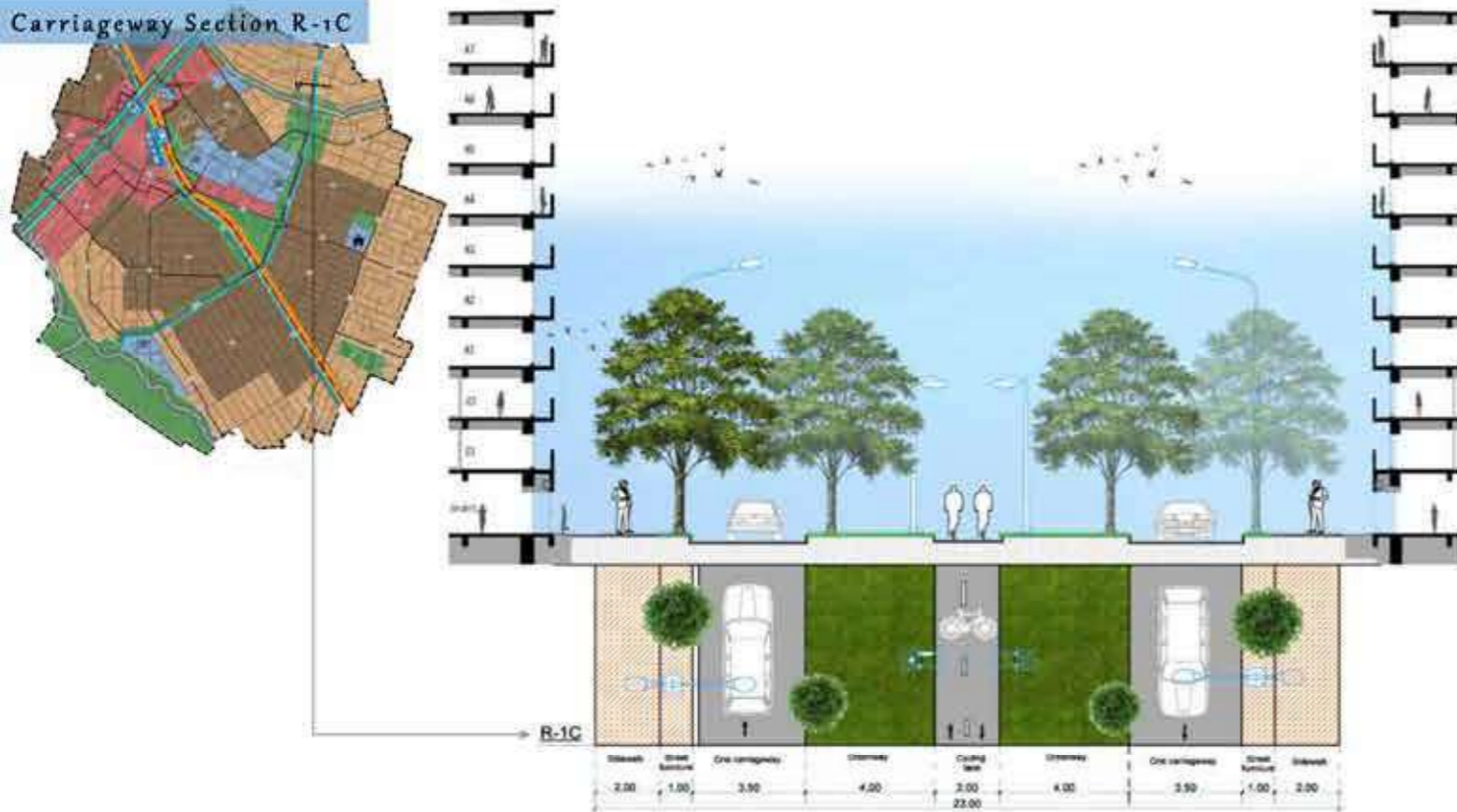
Defined bike parking rack



Integrated railway terminus



Carriageway Section R-1C



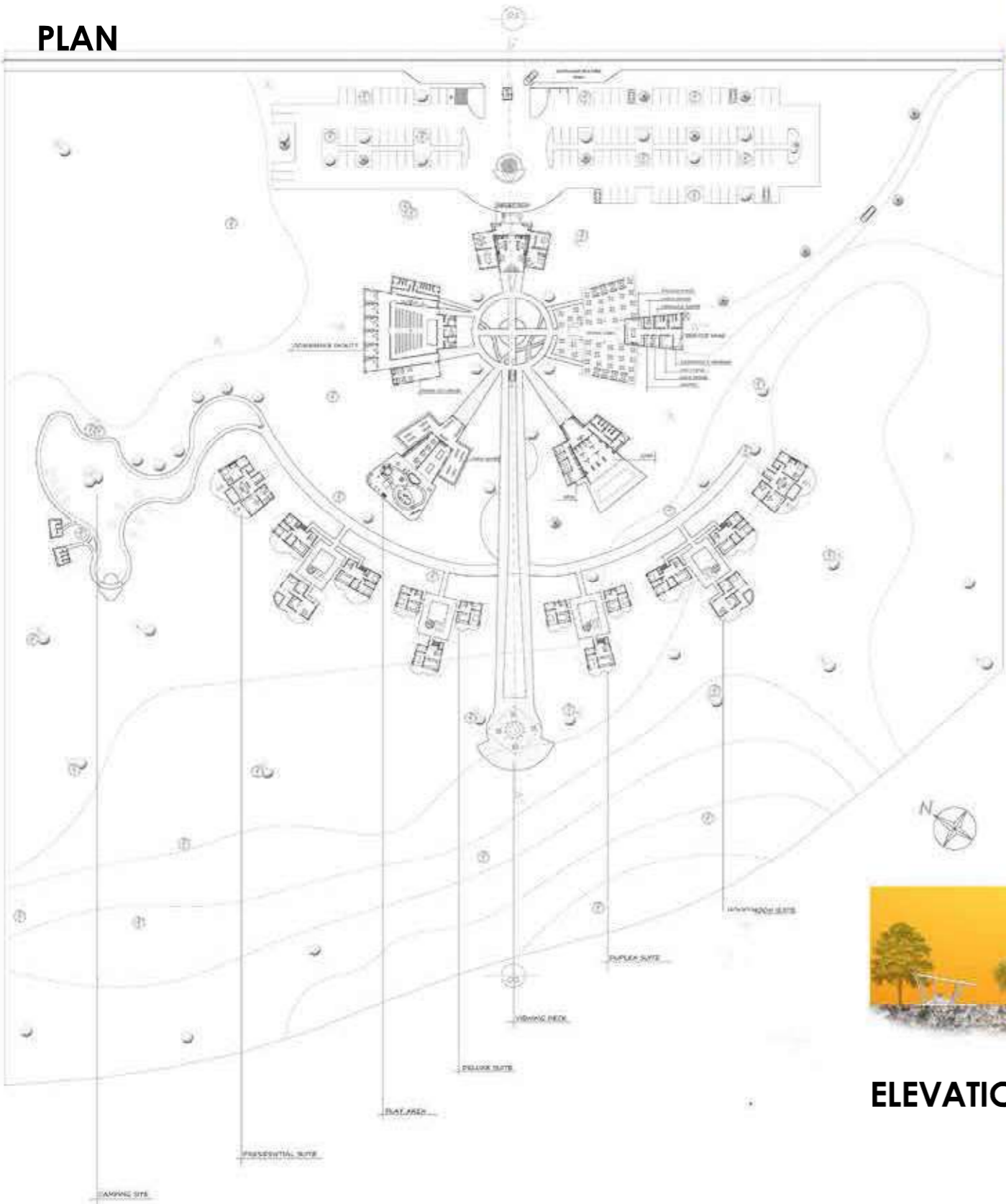
TRANSIT ORIENTED DEVELOPMENT MODEL(TOD)



KENYATTA ROAD RESORT

The resort is located along Kenyatta Road, and its design is purely based on timber as a construction material. Sustainability is achieved through various ways including ; Locally available materials, rain water collection, solar panels among others.

PLAN

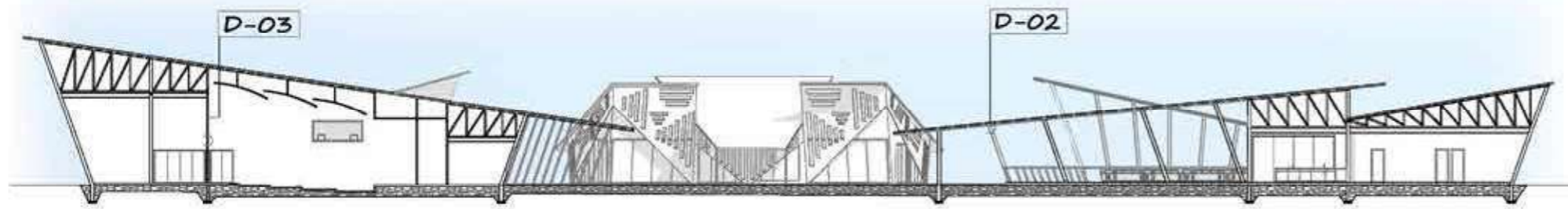


ELEVATION 01

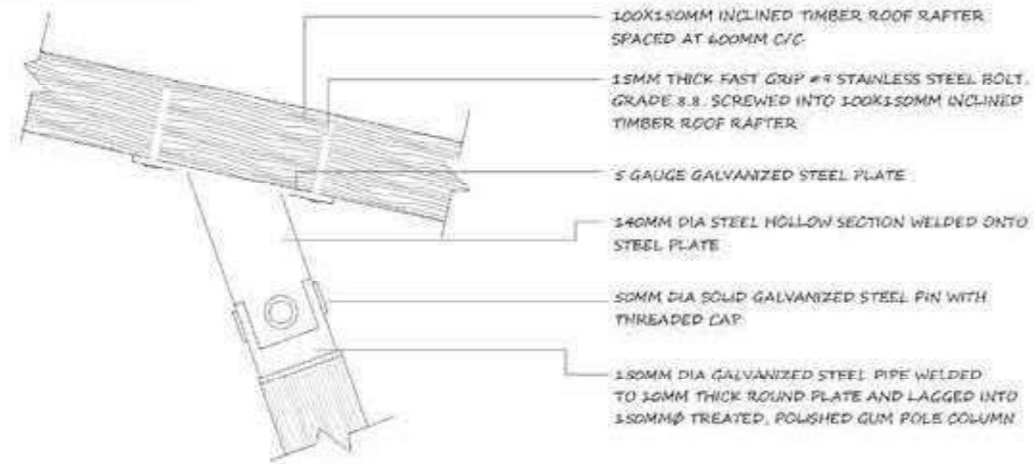


ELEVATION 02

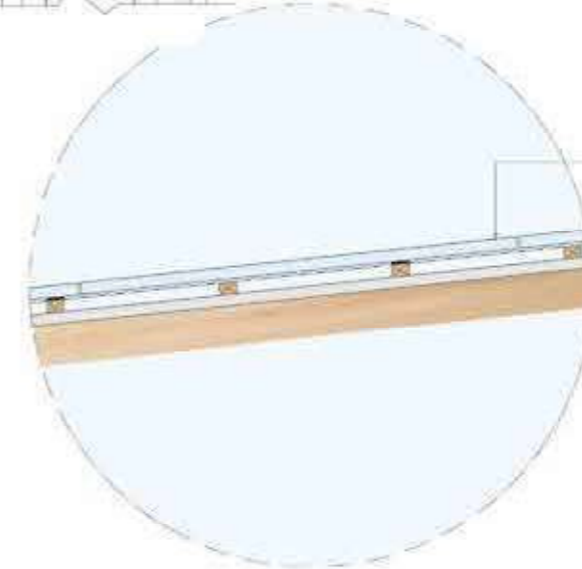
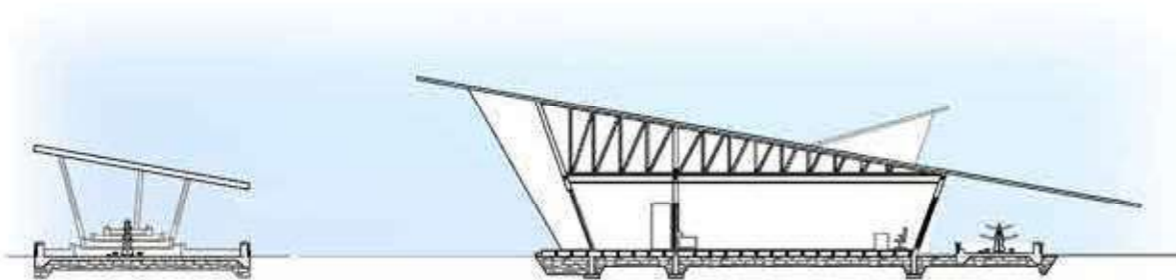
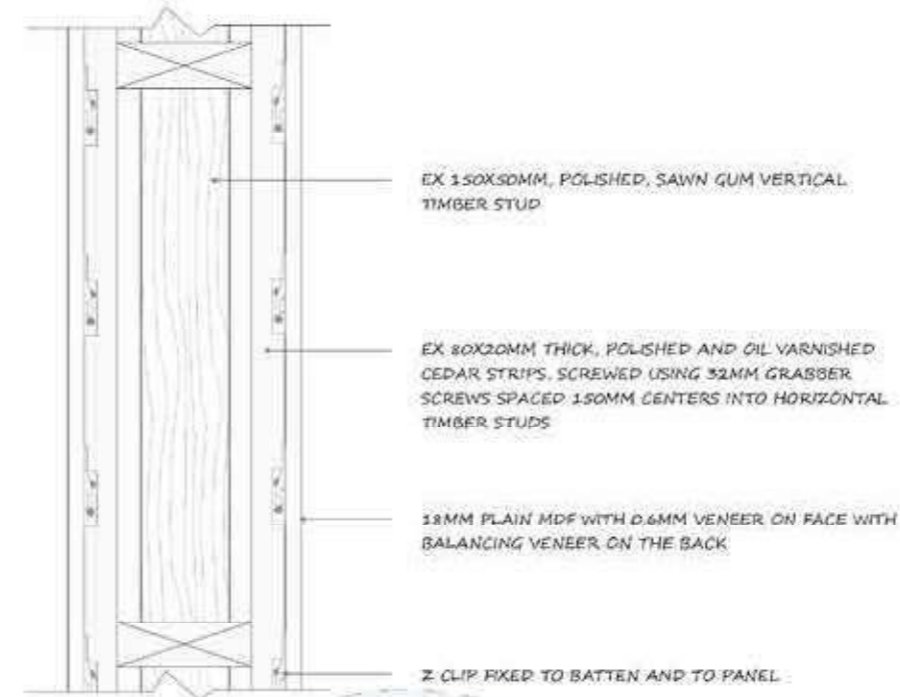
RESORT DESIGN | SECTIONS, DETAILS AND 3D PERSPECTIVES



DETAIL 02



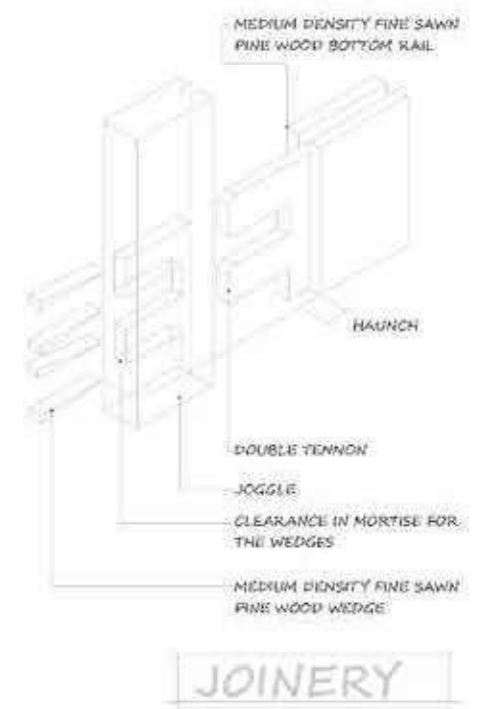
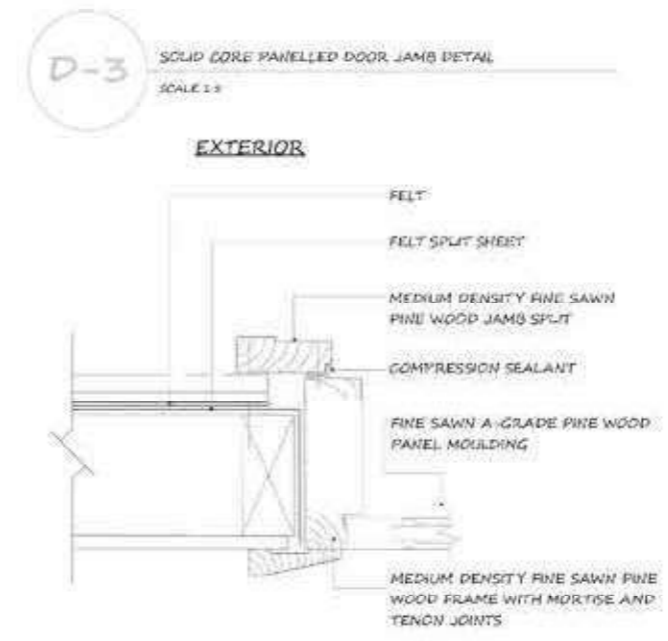
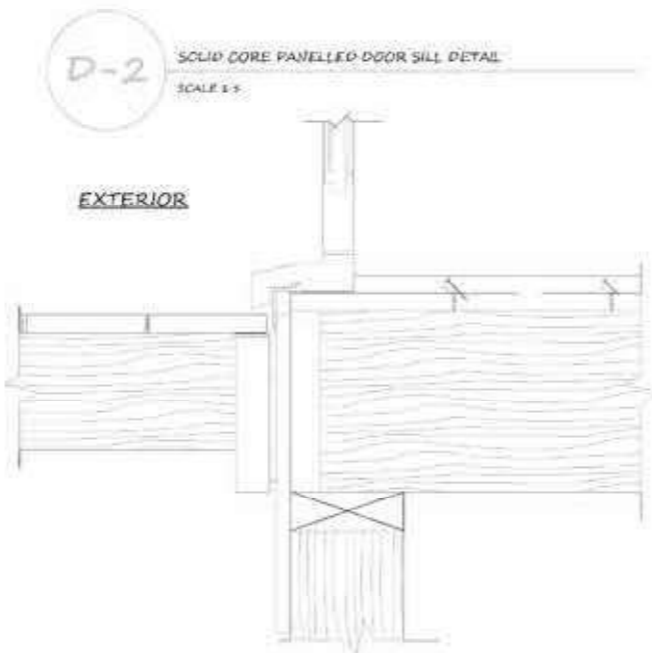
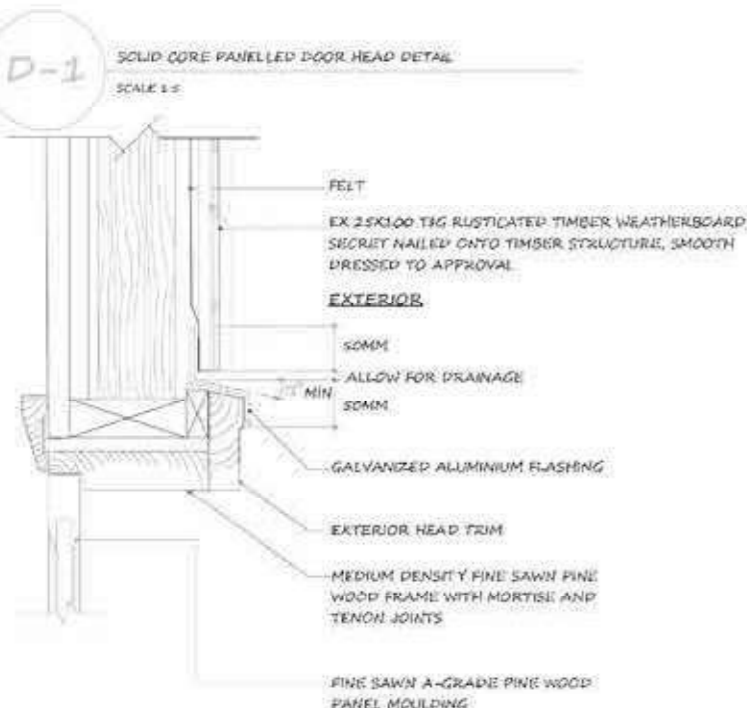
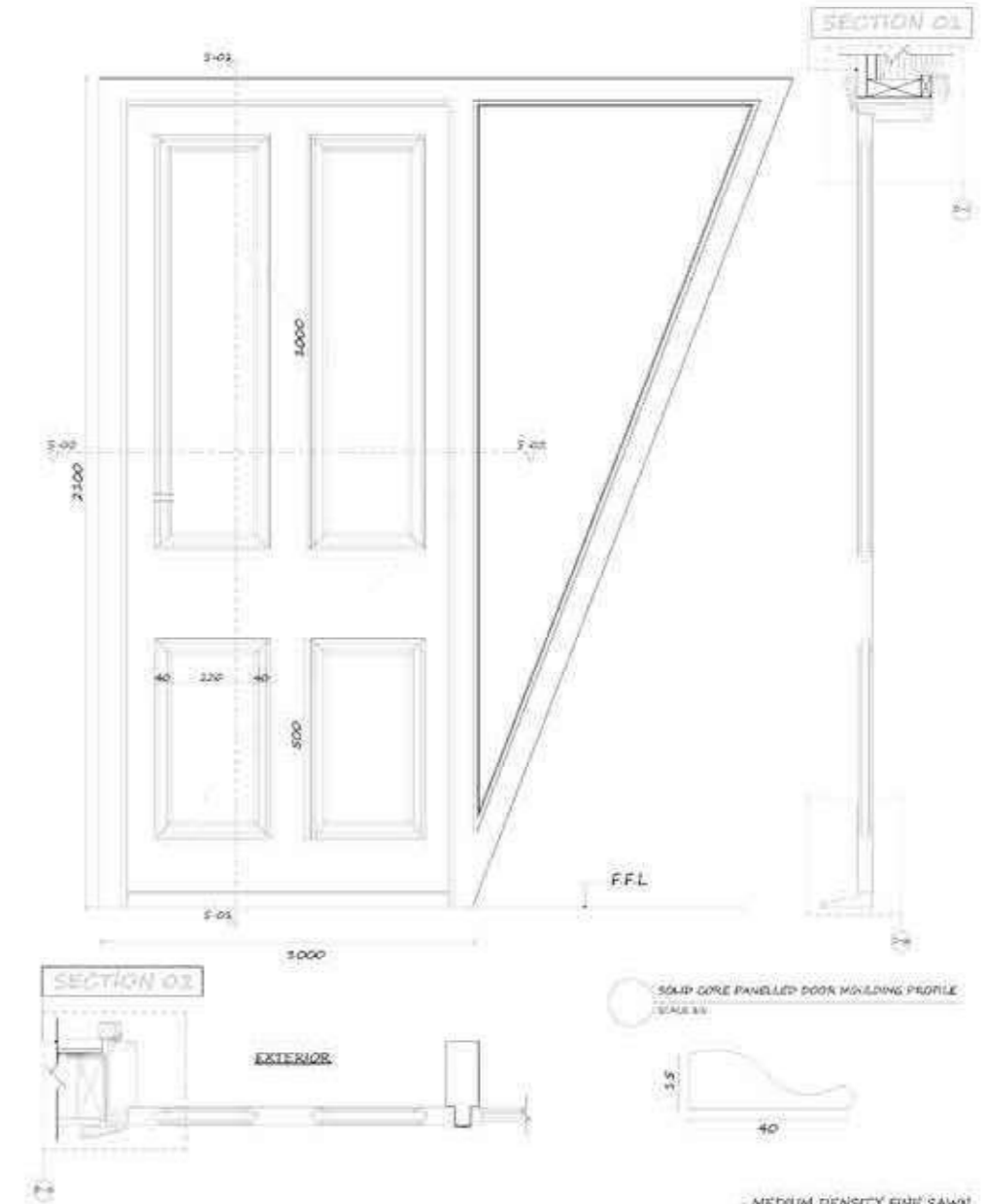
DETAIL 03



1865x1125x3MM PHOTOVOLTAIC PANEL ANCHORED TO RAIL ON INTERSOLE HIGH DENSITY POLYETHYLENE PLATE NAILED ON 36x48MM COUNTER BATTEN ON 36x48MM BATTEN NAILED TO STANDING SEAM STEEL SHEET NAILED TO EX 150x50MM INCLINED TIMBER RAFTER

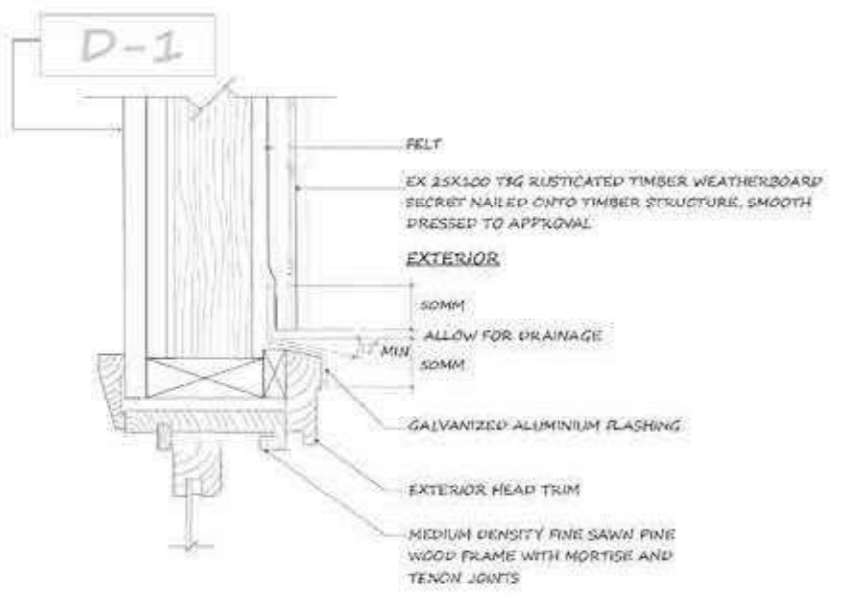
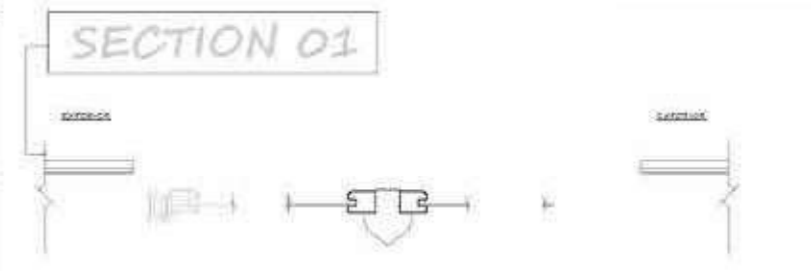
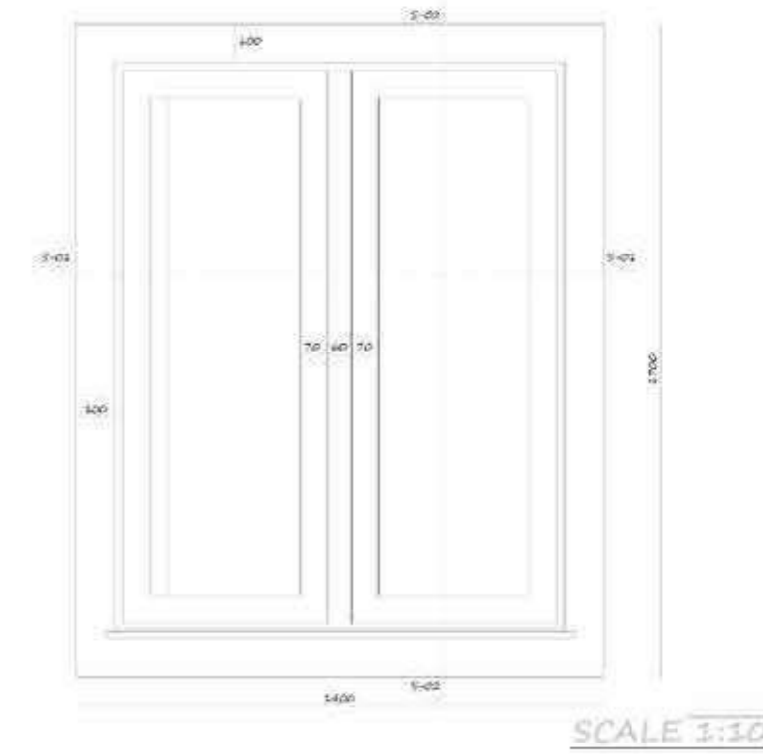
RESORT DETAILS | DOOR SCHEDULE

MARK	D1	D2	D3	D4
DESCRIPTION	SINGLE SWING, SINGLE LEAF SOLID CORE DOOR WITH SIDE LIGHT PAINTED TO ARCHITECTS APPROVAL	SINGLE SWING, SINGLE LEAF SEMI-SOLID CORE DOOR WITH 50X75MM RHS FRAME WITH PV, PAINTED TO ARCHITECTS APPROVAL	SINGLE SWING, SINGLE LEAF SEMI-SOLID CORE DOOR WITH 50X75MM RHS FRAME WITH PV, PAINTED TO ARCHITECTS APPROVAL	4 LEAF SLIDING DOOR WITH 50X75MM RHS FRAME AND 6MM THICK LAMINATED GLASS PANEL, WITH PV
SIZE	900X2300MM	800X2300MM	800X2400MM	3400X2300MM
QUANTITY	1	3	2	1
FRAME CONSTRUCTION	MEDIUM DENSITY FINE SAWN PINE WOOD FRAME WITH MORITSE AND TENON JOINTS WITH SINGLE REBATE. SUPPLY COMPLETE WITH A PAIR OF ALUMINIUM BUTT HINGES, WOOD PRIMERED, PAINTED 2 COATS ENAMEL COLOUR AS PER FINISHING SCHEDULE.	ANODIZED ALUMINIUM FRAME WITH SINGLE REBATE TO ACCEPT DOOR LEAF SIZE 800X 2500. SUPPLY COMPLETE WITH A PAIR OF ALUMINIUM BUTT HINGES, RED OXIDE PRIMERED AND PAINTED 2 COATS ENAMEL COLOUR AS PER FINISHING SCHEDULE.	ANODIZED ALUMINIUM FRAME WITH SINGLE REBATE TO ACCEPT DOOR LEAF SIZE 800X 2400. SUPPLY COMPLETE WITH A PAIR OF ALUMINIUM BUTT HINGES, RED OXIDE PRIMERED AND PAINTED 2 COATS ENAMEL COLOUR AS PER FINISHING SCHEDULE.	ALUMINIUM FRAME WITH SILVER BRUSH FINISH AS PER FINISHING SCHEDULE. GLAZING GASKETS SHALL BE EXTRUDED BLACK SANTOPRENE OF DUROMETER APPROPRIATE TO PERFORM THEIR FUNCTION.
DOOR CONSTRUCTION	SINGLE SWING OAK 4 PANELLED DOOR IN POWDER COATED FINISH WITH 6MM TEMPERED GLASS SIDELIGHT	40MM THICK SEMI SOLID CORE DOOR TYPE W/COVER IN 600X1200MM DOOR JAMBS	40MM THICK SEMI SOLID CORE DOOR TYPE W/COVER IN 600X1200MM DOOR JAMBS WITH 6MM GLASS PANEL AND 4MM TOP VENTLIGHT PANEL WITH PV	4 LEAF SLIDING DOOR WITH 6MM LAMINATED GLASS ON 36MM WIDE U-CHANNEL FLOOR GUIDE WITH DIE CAST ALLOY ROLLERS. SUPPLY WITH 30MM Ø FLUSH ROUND CUP DOOR HANDLE
IRONMONGERY	3 NO. BRASS HINGES 1 NO. 5 LEVER LOCK 1 NO. OVERHEAD DOOR CLOSURE	5 NO. BRASS HINGES 1 NO. 5 LEVER LOCK 1 NO. OVERHEAD DOOR CLOSURE	3 NO. BRASS HINGES 1 NO. 5 LEVER LOCK 1 NO. OVERHEAD DOOR CLOSURE	3 NO. BRASS CLICK STOPPER TOP HANGERS WITH WHEELS R5 BRASS SPACERS

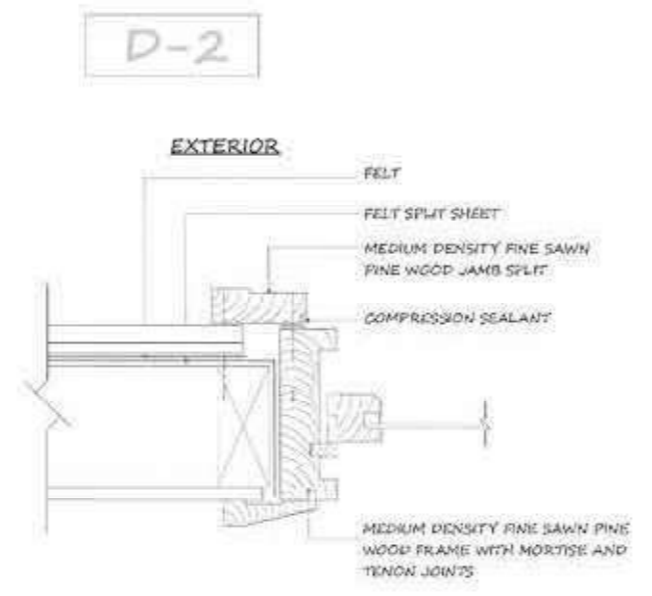


RESORT DETAILS | WINDOW SCHEDULE

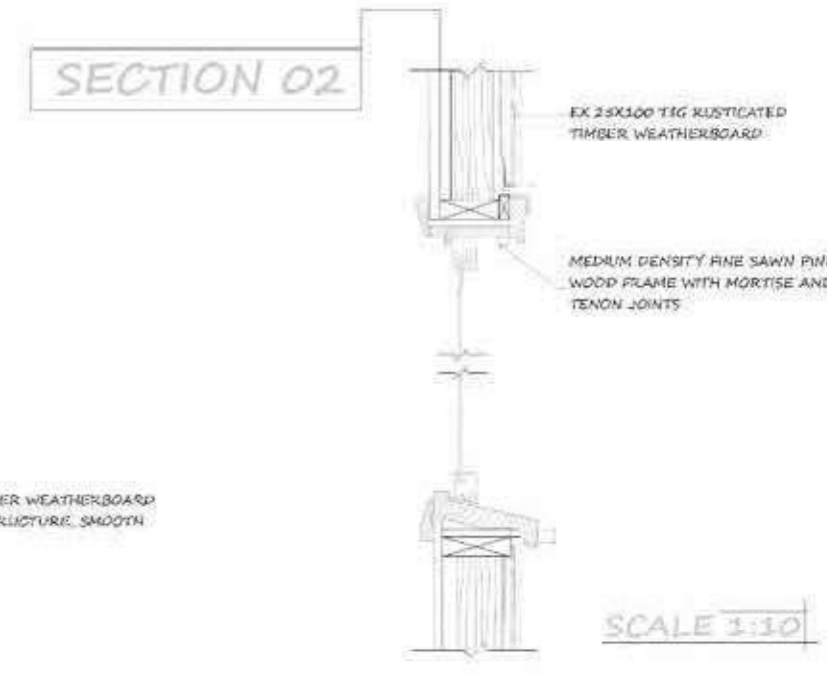
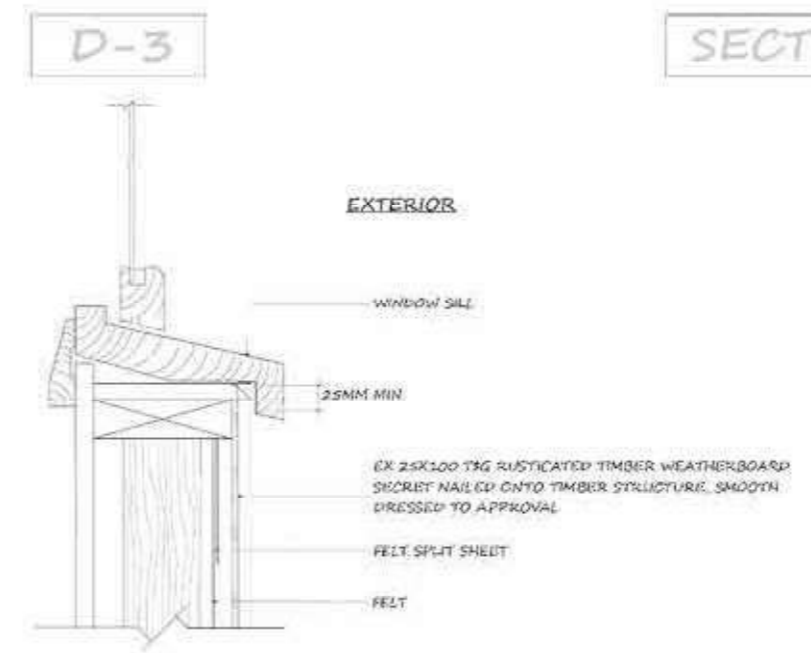
MARK	W1	W2	W3	W4	W5	W6
DESCRIPTION	DOUBLE SASH, SIDE HUNG WITH CASING OUTSIDE, OPENABLE WITH PV.	DOUBLE SASH, SIDE HUNG WITH CASING OUTSIDE, OPENABLE WITH PV.	HORIZONTAL MULTI-SASH, SIDE HUNG WITH CASING OUTSIDE, OPENABLE WITH PV.	DOUBLE SASH, FIXED, OBSCURED WINDOW WITH LOUVERS AND CASING OUTSIDE, OPENABLE WITH PV.	DOUBLE SASH, SIDE HUNG WITH CASING OUTSIDE, OPENABLE WITH PV.	HORIZONTAL MULTI-SASH, SIDE HUNG WITH CASING OUTSIDE, OPENABLE WITH PV.
SIZE	1200X1500MM	1500X1500MM	3600X1500MM	1000X1500MM	2000X1500MM	2800X1500MM
QUANTITY	1	2	1	2	1	1
FRAME CONSTRUCTION	MEDIUM DENSITY FINE SAWN PINE WOOD FRAME WITH MORTISE AND TENON JOINTS. SUPPLY COMPLETE WITH A PAIR OF SASH LOCKS. WOOD PRIMERED, PAINTED 2 COATS OIL-BASED ENAMEL COLOUR AS PER FINISHING SCHEDULE.	MEDIUM DENSITY FINE SAWN PINE WOOD FRAME WITH MORTISE AND TENON JOINTS. SUPPLY COMPLETE WITH A PAIR OF SASH LOCKS. WOOD PRIMERED, PAINTED 2 COATS OIL-BASED ENAMEL COLOUR AS PER FINISHING SCHEDULE.	MEDIUM DENSITY FINE SAWN PINE WOOD FRAME WITH MORTISE AND TENON JOINTS. SUPPLY COMPLETE WITH 3 PAIRS OF SASH LOCKS. WOOD PRIMERED, PAINTED 2 COATS OIL-BASED ENAMEL COLOUR AS PER FINISHING SCHEDULE.	MEDIUM DENSITY FINE SAWN PINE WOOD FRAME WITH MORTISE AND TENON JOINTS. APPLY GREY-BASED PRIMER, PAINT 2 COATS OIL-BASED ENAMEL COLOUR AS PER FINISHING SCHEDULE.	MEDIUM DENSITY FINE SAWN PINE WOOD FRAME WITH MORTISE AND TENON JOINTS. SUPPLY COMPLETE WITH A PAIR OF SASH LOCKS. WOOD PRIMERED, PAINTED 2 COATS OIL-BASED ENAMEL COLOUR AS PER FINISHING SCHEDULE.	MEDIUM DENSITY FINE SAWN PINE WOOD FRAME WITH MORTISE AND TENON JOINTS. SUPPLY COMPLETE WITH 3 PAIRS OF SASH LOCKS. WOOD PRIMERED, PAINTED 2 COATS OIL-BASED ENAMEL COLOUR AS PER FINISHING SCHEDULE.
WINDOW CONSTRUCTION	1200X1500MM CASEMENT WINDOW WITH 6MM LAMINATED GLASS FITTED WITH COMPRESSION SEALANT	1500X1500MM CASEMENT WINDOW WITH 6MM LAMINATED GLASS FITTED WITH COMPRESSION SEALANT	3600X1500MM MULTI-SASH WINDOW WITH 6MM LAMINATED GLASS FITTED WITH PUTTY GLAZING	1000X1500MM DOUBLE SASH FIXED WINDOW WITH 6MM OBSCURED GLASS FITTED WITH COMPRESSION SEALANT	2000X1500MM CASEMENT WINDOW WITH 6MM LAMINATED GLASS FITTED WITH COMPRESSION SEALANT	2800X1500MM MULTI-SASH WINDOW WITH 6MM LAMINATED GLASS FITTED WITH PUTTY GLAZING
IRONMONGERY	2 NO. WINDOW STAYS 2 NO. WINDOW CLOSURES	2 NO. WINDOW STAYS 2 NO. WINDOW CLOSURES	4 NO. WINDOW STAYS 4 NO. WINDOW CLOSURES	AS REQUIRED	2 NO. WINDOW STAYS 2 NO. WINDOW CLOSURES	4 NO. WINDOW STAYS 4 NO. WINDOW CLOSURES



SCALE 1:5



SCALE 1:5



GAZI BEACH RESORT

*Sanctuary for restorative calm
and luxury*

The project is a 5 star resort located at Gazi beach, Kwale county in Kenya. The client, Pinnacle Travel and Safaris Limited wanted to provide ultimate holiday experience to those seeking the pinnacle of tropical luxury while encouraging its members to provide quality service to keep abreast of changing needs of the travelling public and to promote good relationship between the resort and the public I was therefore tasked to design a resort entailing the following:

- >High grade materials in construction and decor
- >24 hour reception and room service
- >Valet parking
- >Extensive fitness and spa facilities
- >Atleast 1 permanent suite comprised of 3 separate rooms inclusive of a bedroom, lounge and bathroom each, and should always be available for booking.

- > The site is located around Gazi beach, 3km south from Gazi and east of Capra and Kituruni in Kwale County, Kenya
- > It is located at latitude 4°26'28.1" and longitude 39°30'21.3" with an elevation of 7 meters

LEGEND

- Sun path
- Monsoon wind



This is the map of Africa showing Kenya



The map of Kenya showing Kwale County

Figure 1.2.1



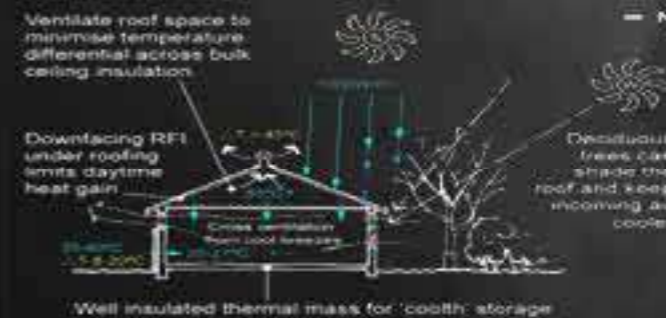
Gazi Beach

The map of Kwale showing location of the site

Figure 1.2.3

Mukurumudzi

Minimise solar gains with passive shading



RFI = reflective foil insulation



DESIGN CONCEPT(PALM TREE)
 Buildings account for more than 1/4 of all green house gas emissions. By going green we can reduce the impact our buildings have on climate change. I envisioned a concept out of the sumptuous palm trees on the site. The design would make guest senses to be eased to the rhythms of nature, the blossoming of abundant foliage and the gentle hum of life.



FLOOR PLAN



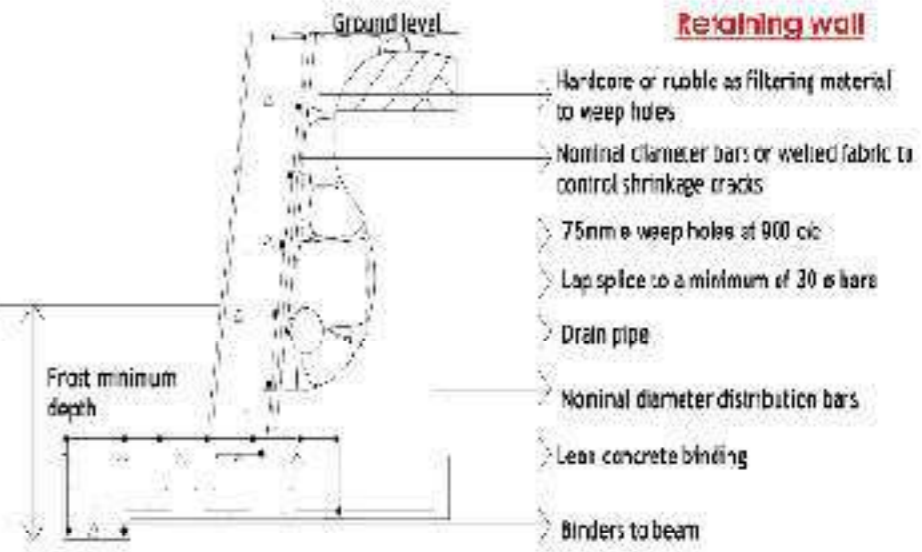
NOTES

- 1. ALL WORK TO BE DONE IN ACCORDANCE WITH THE CURRENT BUILDING REGULATIONS AND STANDARDS.
- 2. THE CONTRACTOR SHALL BE RESPONSIBLE FOR OBTAINING ALL NECESSARY PERMITS AND APPROVALS FROM THE RELEVANT AUTHORITIES.
- 3. THE CONTRACTOR SHALL MAINTAIN ACCESS TO ALL ADJACENT PROPERTIES AND SERVICES AT ALL TIMES.
- 4. ALL MATERIALS AND WORKMANSHIP SHALL BE SUBJECT TO INSPECTION AND APPROVAL BY THE RELEVANT AUTHORITIES.
- 5. THE CONTRACTOR SHALL BE RESPONSIBLE FOR PROTECTING ALL EXISTING SERVICES AND STRUCTURES.
- 6. ALL WORK SHALL BE COMPLETED WITHIN THE SPECIFIED TIME FRAME.
- 7. THE CONTRACTOR SHALL MAINTAIN A SAFE WORKING ENVIRONMENT AT ALL TIMES.
- 8. ALL WORK SHALL BE COMPLETED IN ACCORDANCE WITH THE CURRENT BUILDING REGULATIONS AND STANDARDS.
- 9. THE CONTRACTOR SHALL BE RESPONSIBLE FOR OBTAINING ALL NECESSARY PERMITS AND APPROVALS FROM THE RELEVANT AUTHORITIES.
- 10. THE CONTRACTOR SHALL MAINTAIN ACCESS TO ALL ADJACENT PROPERTIES AND SERVICES AT ALL TIMES.

LEGEND

1	WALL	100mm
2	DOOR	1000mm
3	WINDOW	1500mm
4	CEILING	2500mm
5	FLOOR	150mm
6	ROOF	100mm

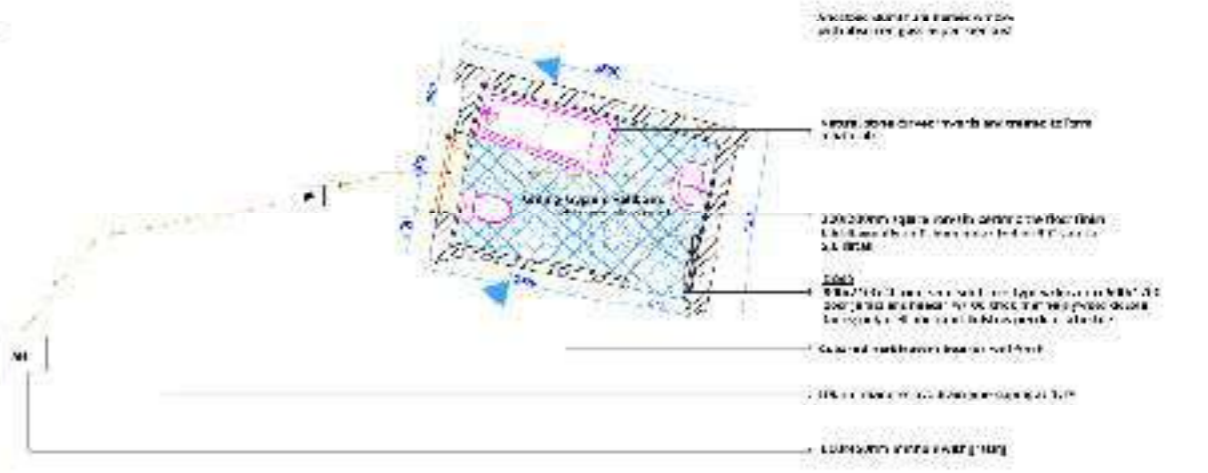
DETAILS



DOOR AND WINDOW SCHEDULE

NO.	DESCRIPTION	TYPE	SIZE	MARKING	LOCATION	REMARKS
1	UPPER DOOR	UPPER DOOR	1000mm	UD1	ROOM 101	UPPER DOOR TO ROOM 101
2	UPPER WINDOW	UPPER WINDOW	1500mm	UW1	ROOM 101	UPPER WINDOW TO ROOM 101
3	UPPER DOOR	UPPER DOOR	1000mm	UD2	ROOM 102	UPPER DOOR TO ROOM 102
4	UPPER WINDOW	UPPER WINDOW	1500mm	UW2	ROOM 102	UPPER WINDOW TO ROOM 102
5	UPPER DOOR	UPPER DOOR	1000mm	UD3	ROOM 103	UPPER DOOR TO ROOM 103
6	UPPER WINDOW	UPPER WINDOW	1500mm	UW3	ROOM 103	UPPER WINDOW TO ROOM 103
7	UPPER DOOR	UPPER DOOR	1000mm	UD4	ROOM 104	UPPER DOOR TO ROOM 104
8	UPPER WINDOW	UPPER WINDOW	1500mm	UW4	ROOM 104	UPPER WINDOW TO ROOM 104
9	UPPER DOOR	UPPER DOOR	1000mm	UD5	ROOM 105	UPPER DOOR TO ROOM 105
10	UPPER WINDOW	UPPER WINDOW	1500mm	UW5	ROOM 105	UPPER WINDOW TO ROOM 105

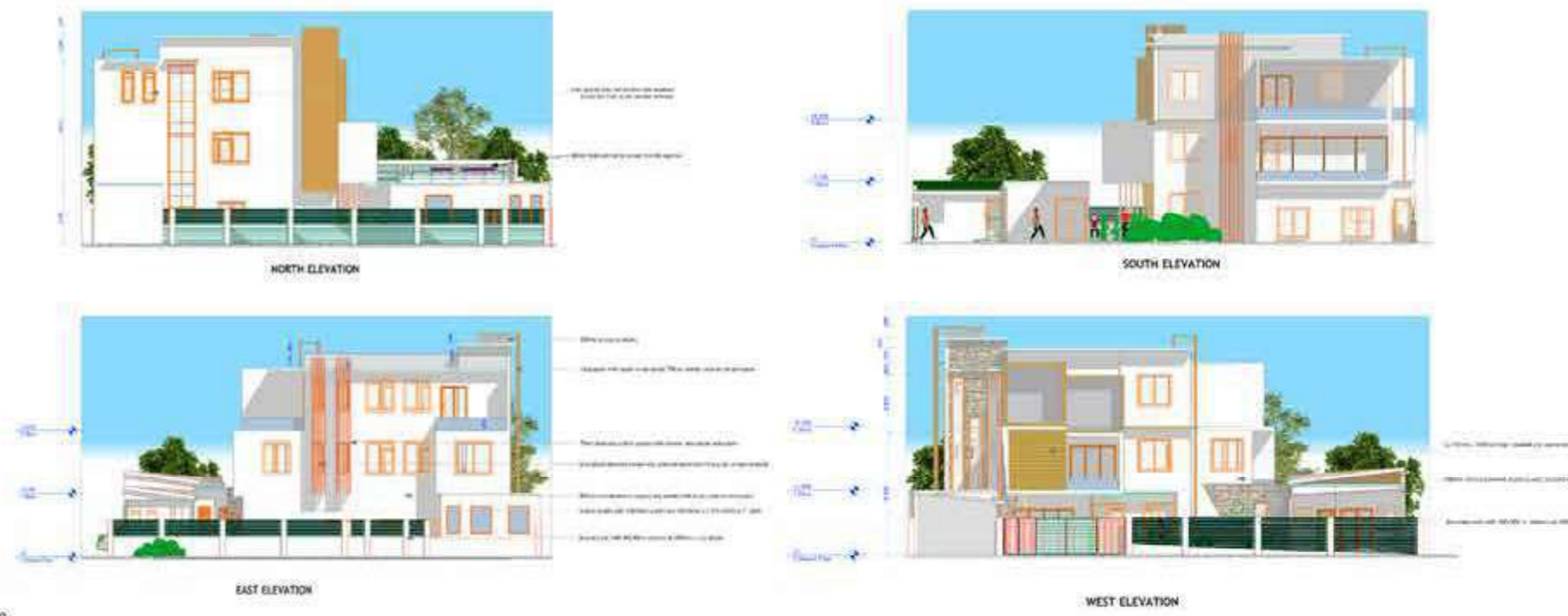
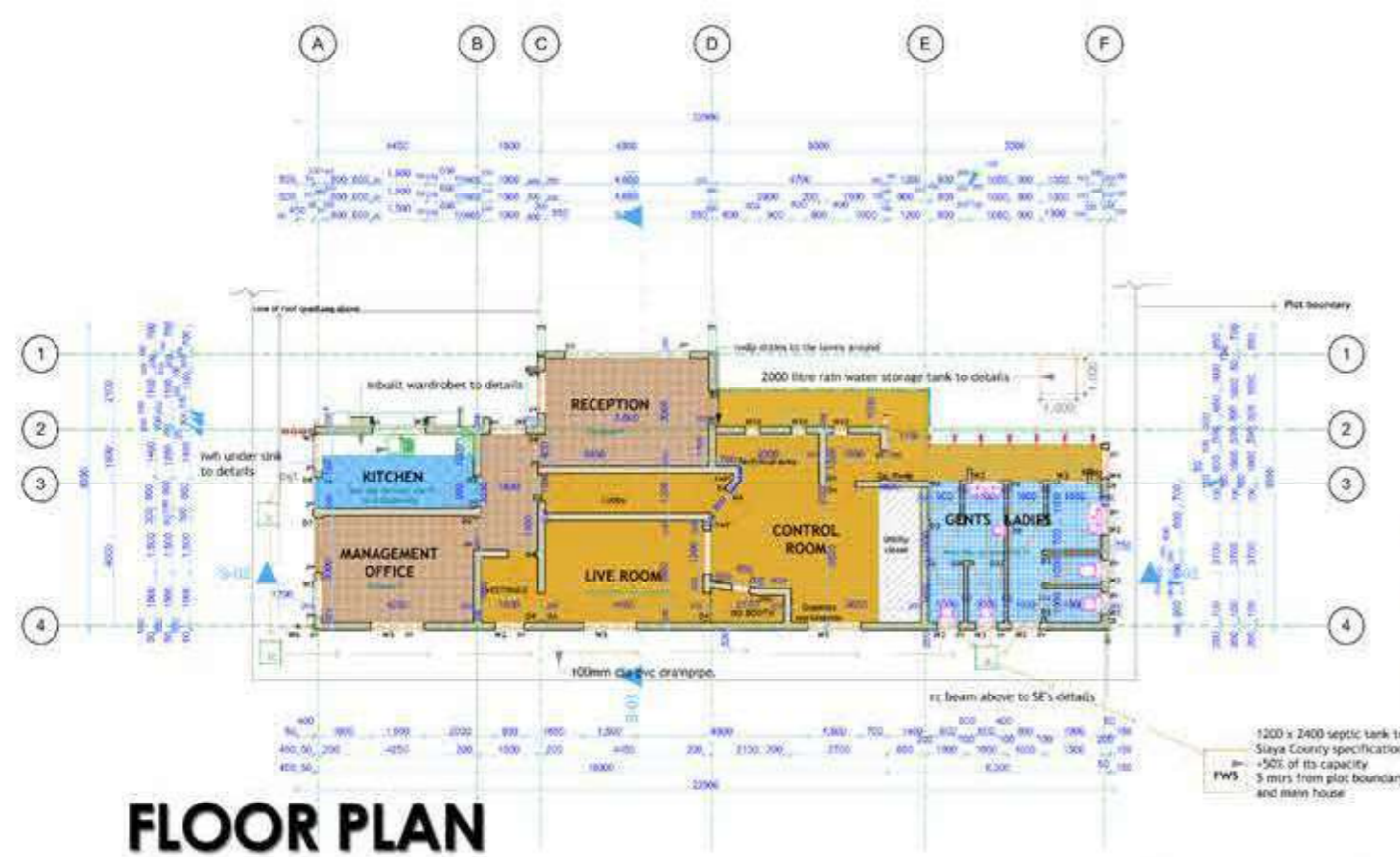
Bathroom Blow-up



MIKAYI BROADCASTING STATION

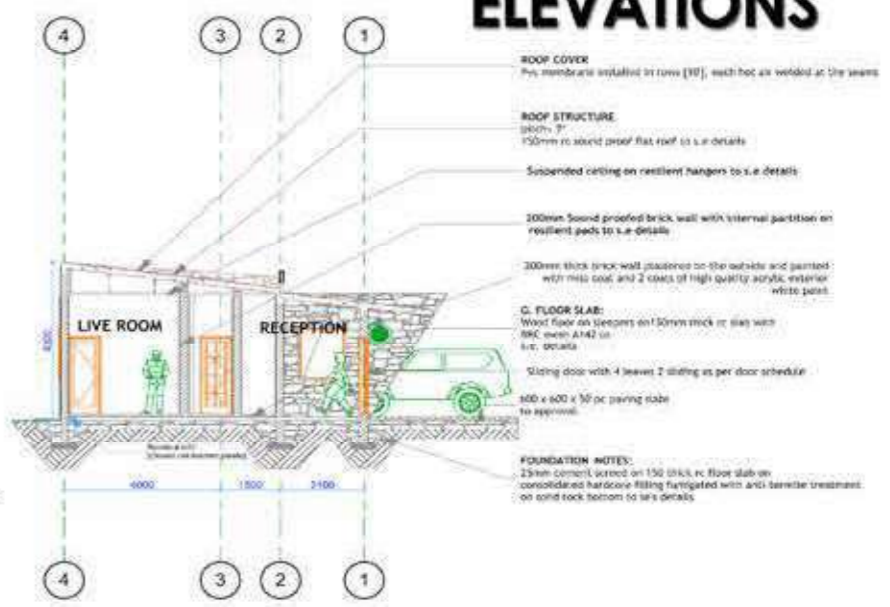
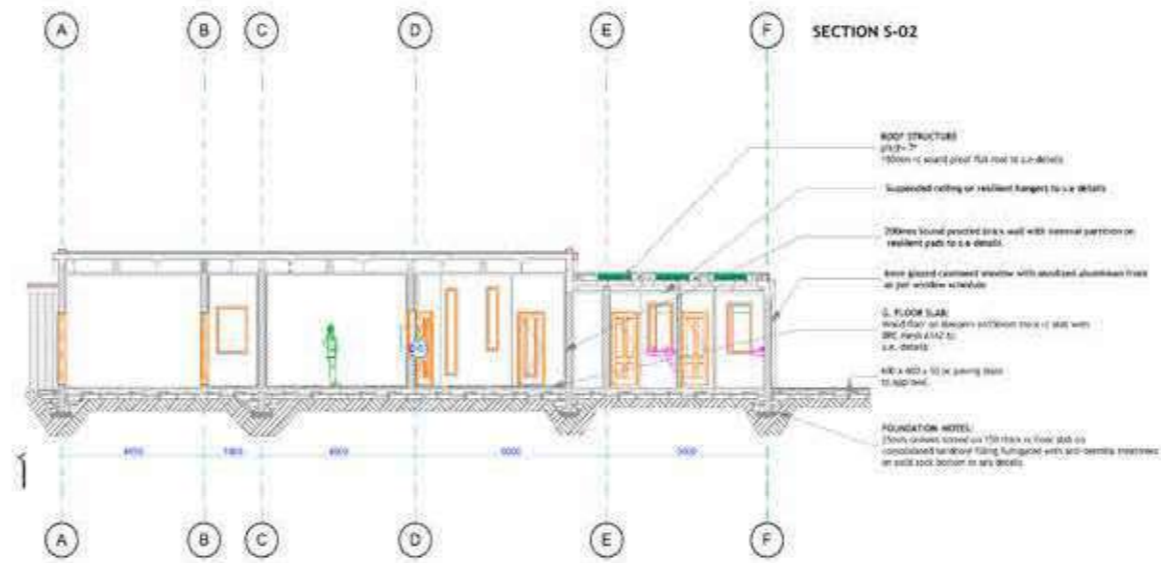
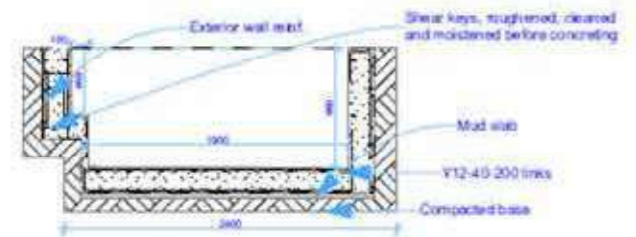


The Mikayi broadcasting station is located in Siaya County, Kenya and is currently under development. I am responsible for the design, technical drawings and the renderings. The clients wanted a station that would reach out not only in Siaya but the whole of Kenya. I therefore envisioned a unique contemporary design that would be the face of Siaya and the whole of Kenya.



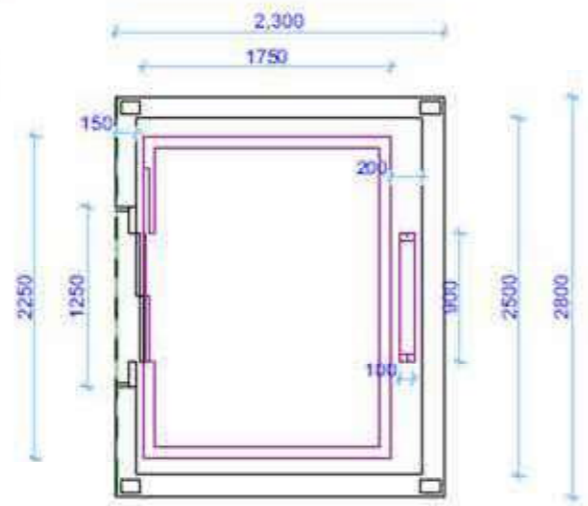
FLOOR PLAN

ELEVATIONS



DETAILS

SECTIONS



ELEVATOR PLAN SCALE 1:20



3D PERSPECTIVES



APIYO CREATIONS