



Cape Town Hotel

Ankit Arora



Cape Town





"I like comparing colour to music: only seven notes and yet innumerable melodies have been composed with those seven notes. ...How many tones or shades does each colour have? An infinite number, just as always endless are the hues and nuances composing a work of art."

Ottavio Missoni

HOTEL MOOD BOARD



FUN



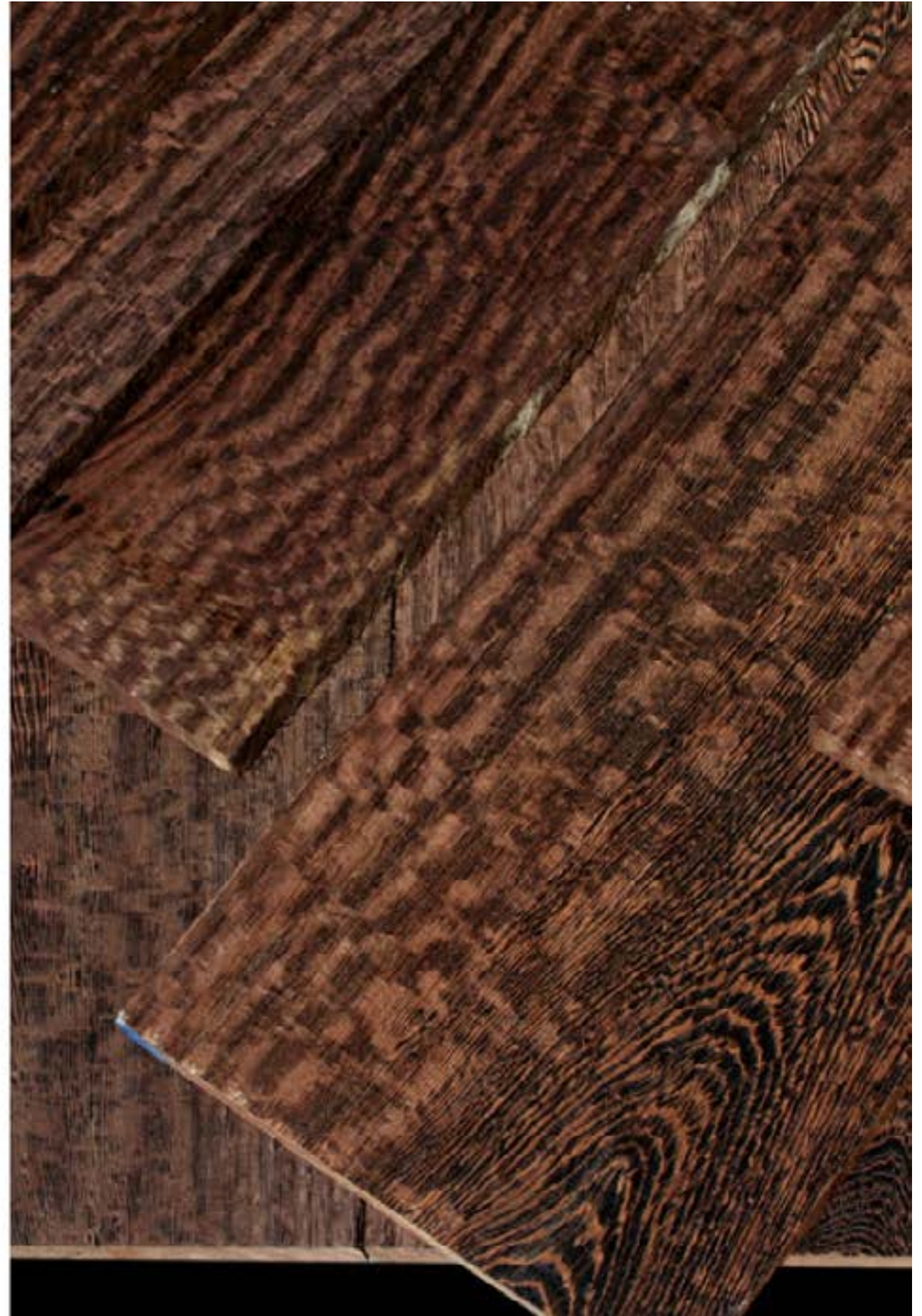
VIBRANT

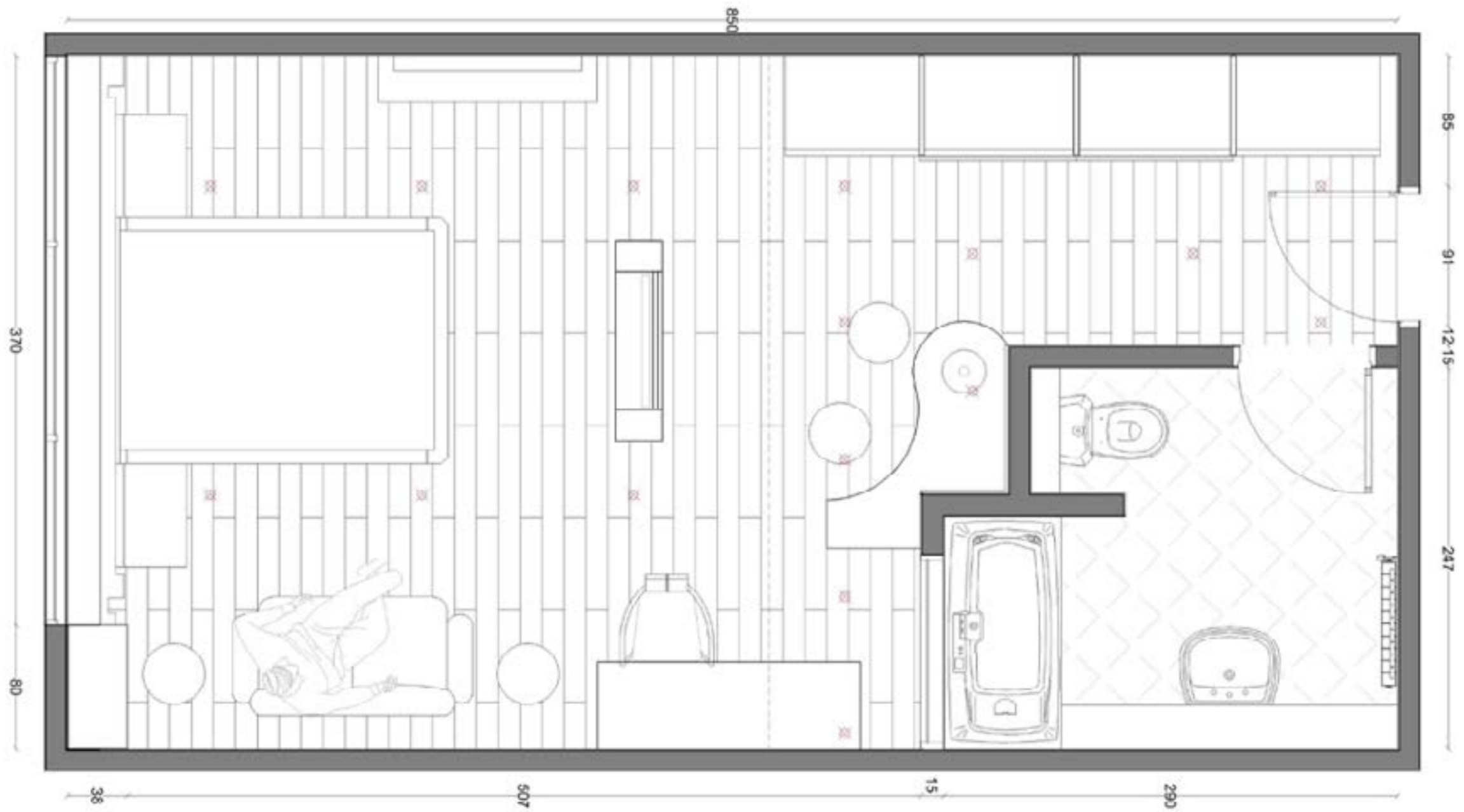


WENGE WOOD

- ◆ Wenge is an **exotic African wood**
- ◆ The heartwood is dark brown, almost black. On the quartersawn surface, fine pencil-thin, light tan lines interspersed with blackish brown stripes make the surface appear as if it has been stroked by the fine claws of some wild jungle animal. On the tangential surface, the light lines show up as undulating streaks, like waves on the water.

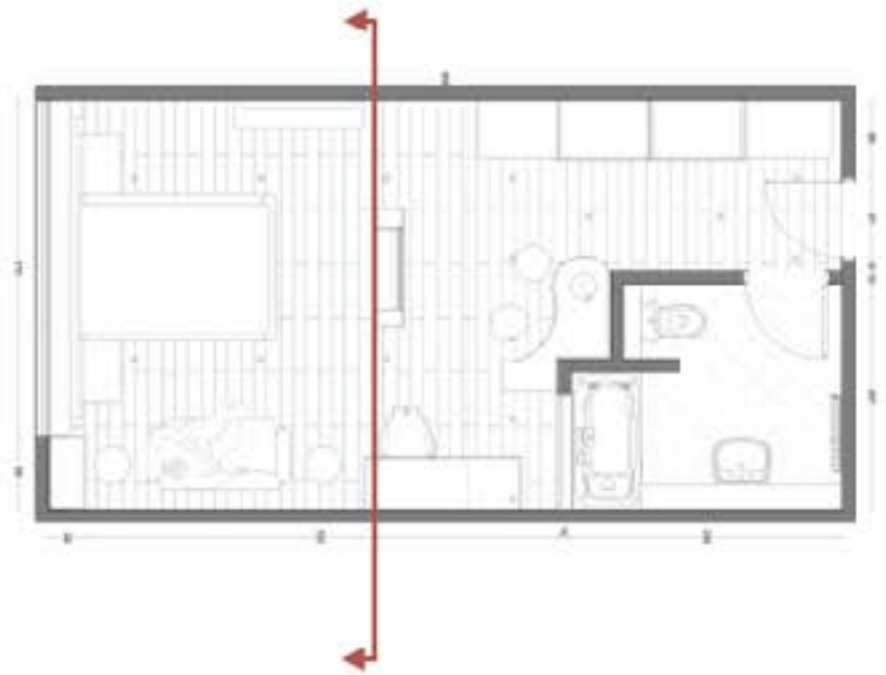
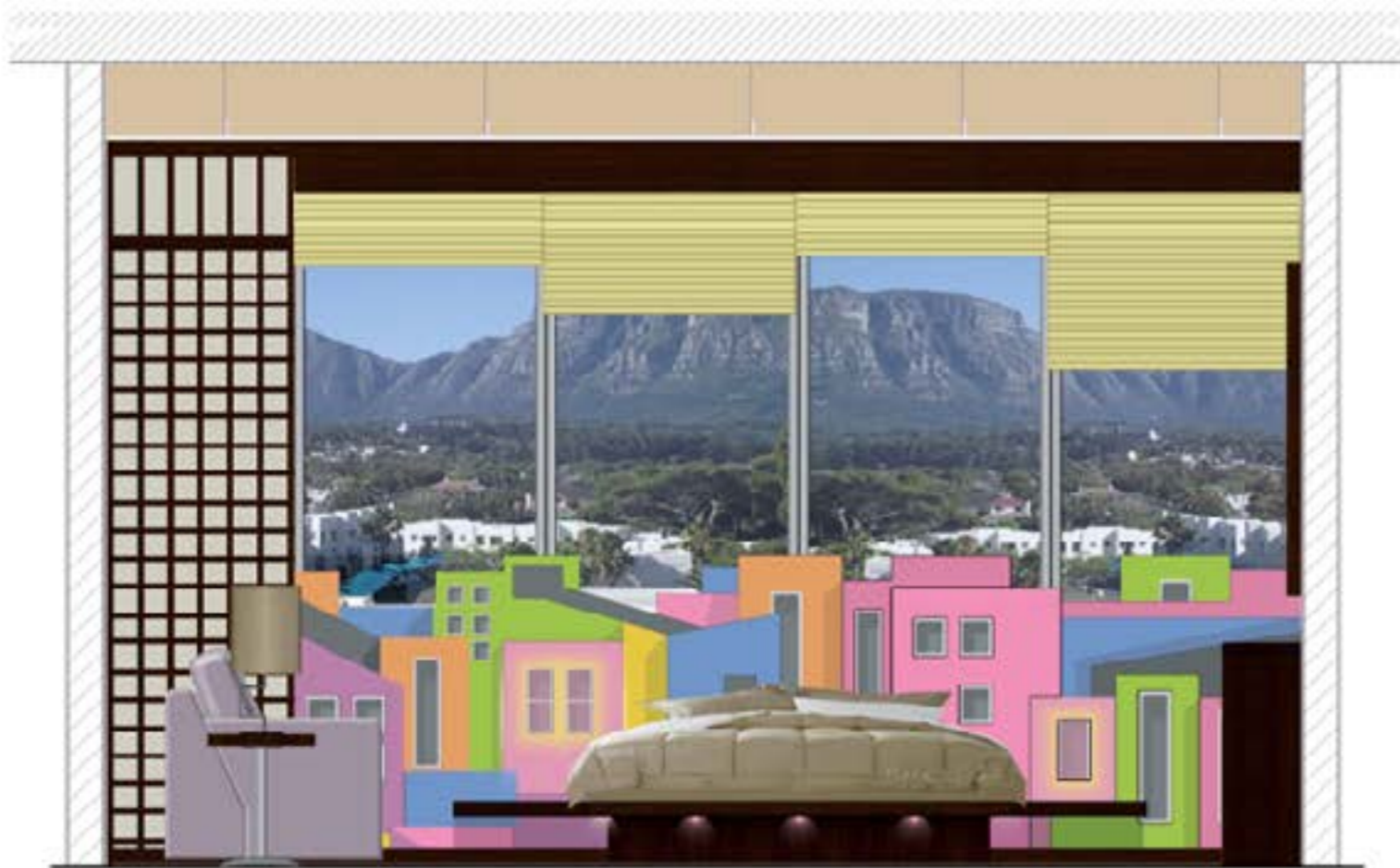
The Entire Hotel furniture will be made with Wenge wood.





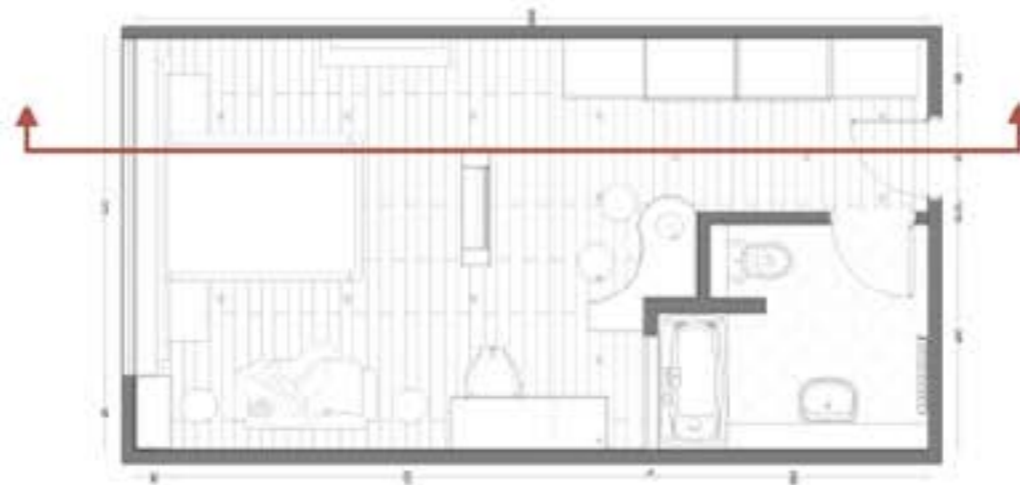
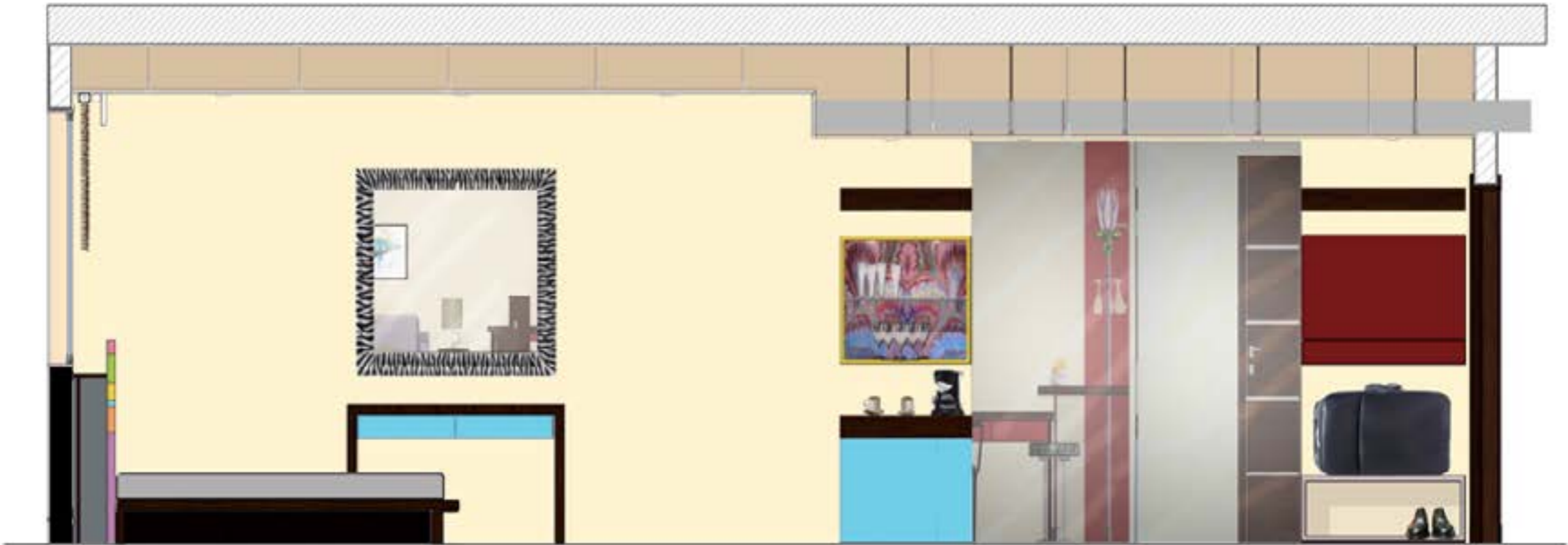
HOTEL ROOM

Floor Plan (scale: 1:100)



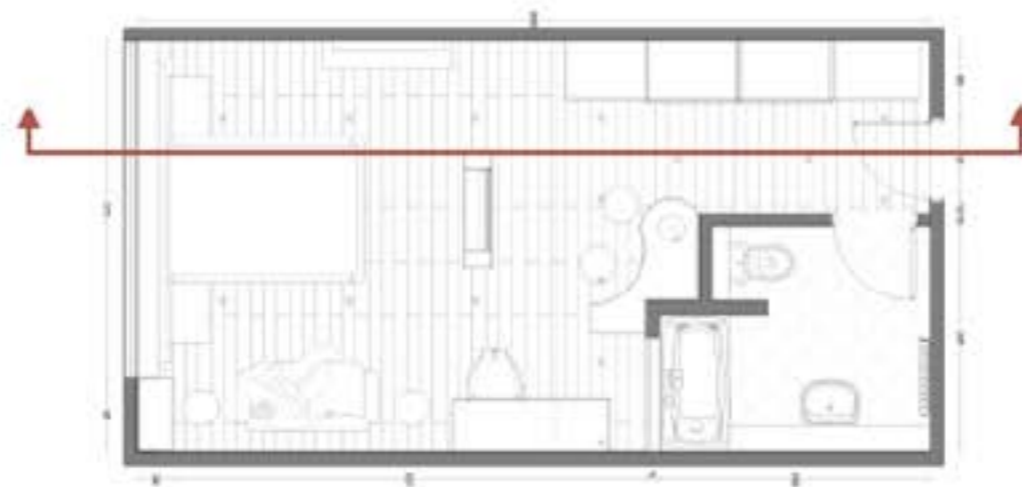
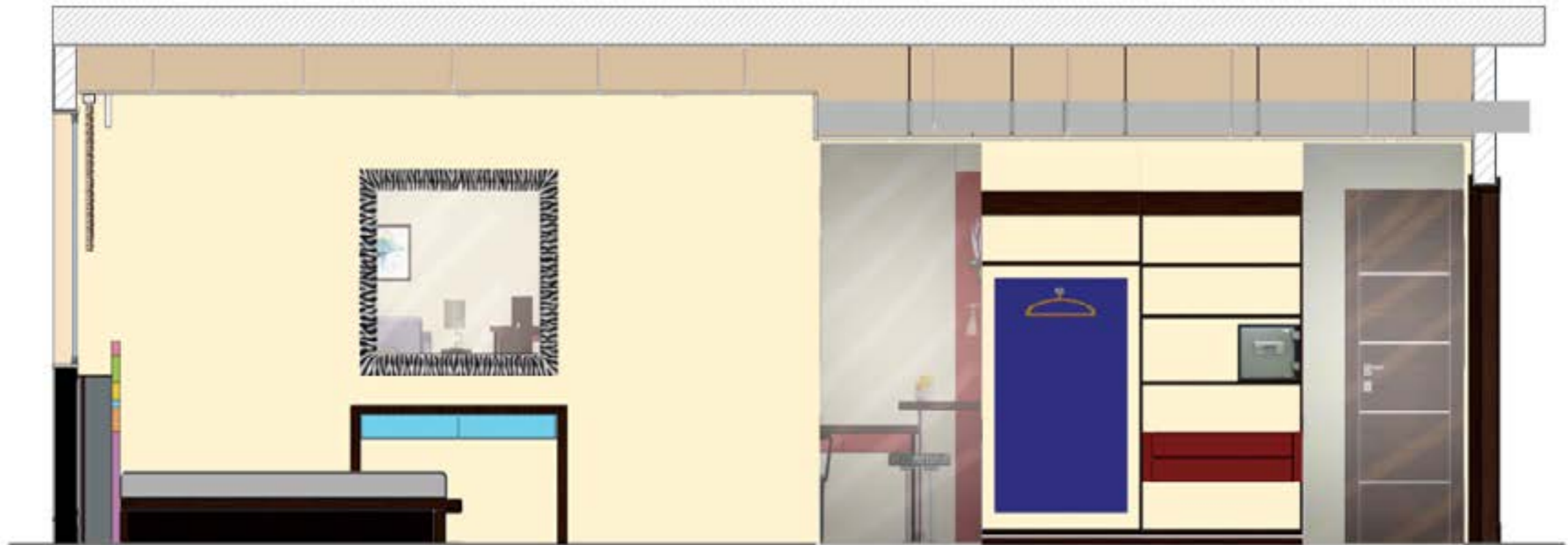
ROOM SECTION 1

Bed Design



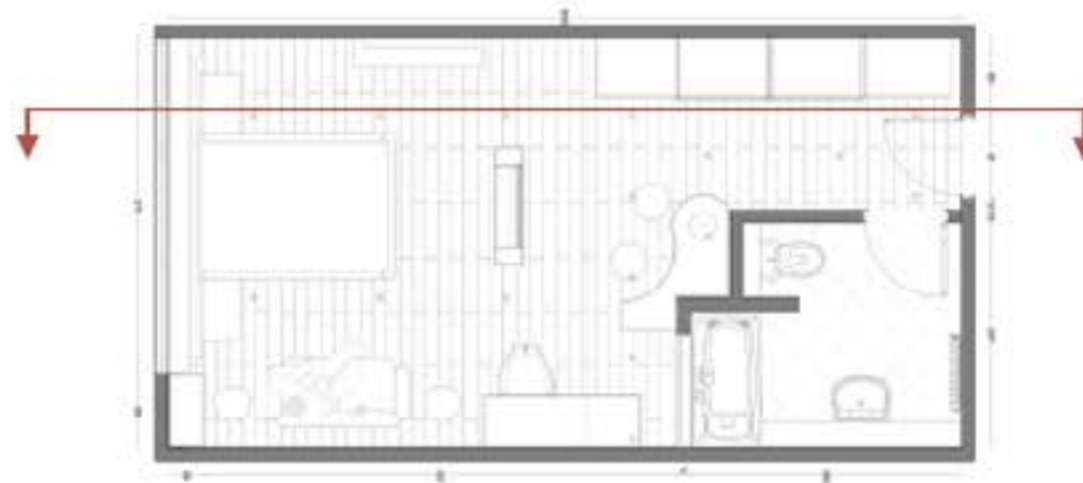
ROOM SECTION 2a

Wardrobe when closed
& Dressing Table



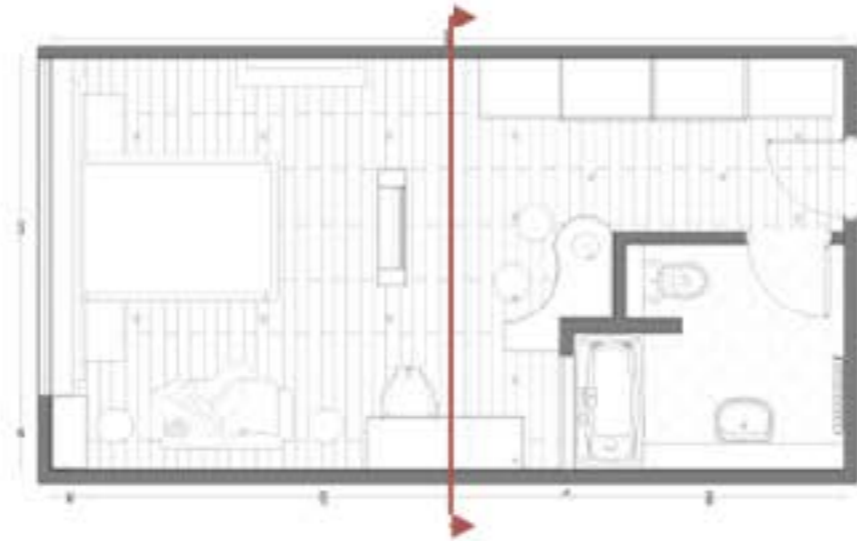
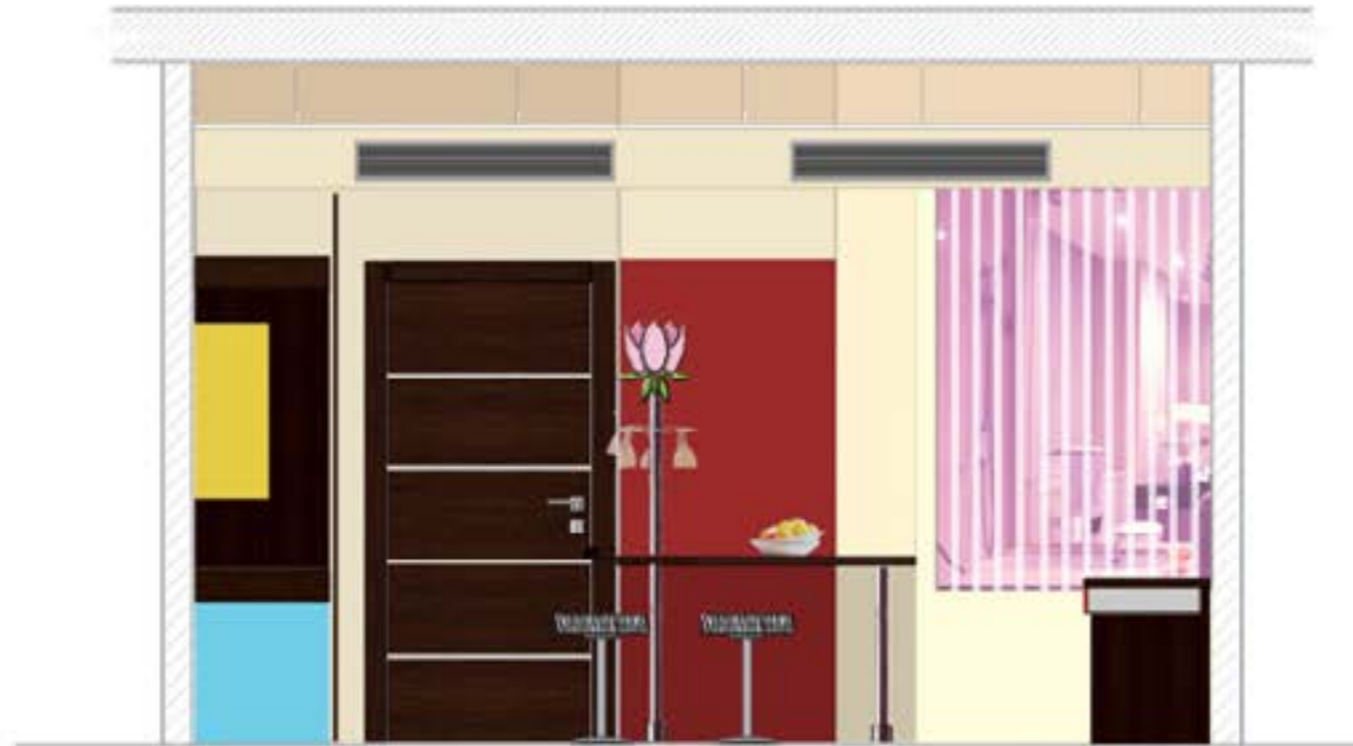
ROOM SECTION 2b

Wardrobe when opened
& Dressing Table



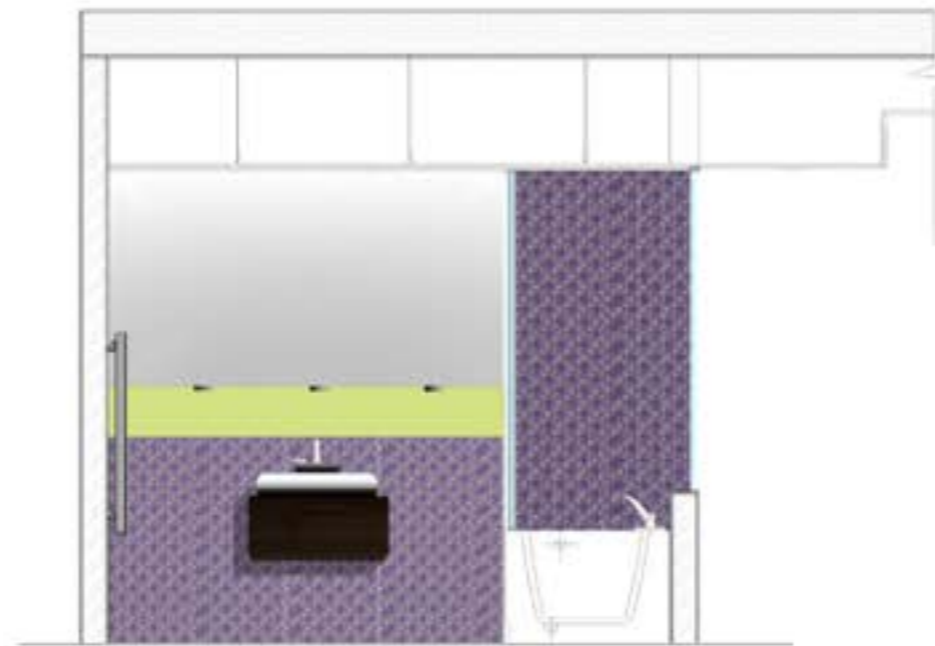
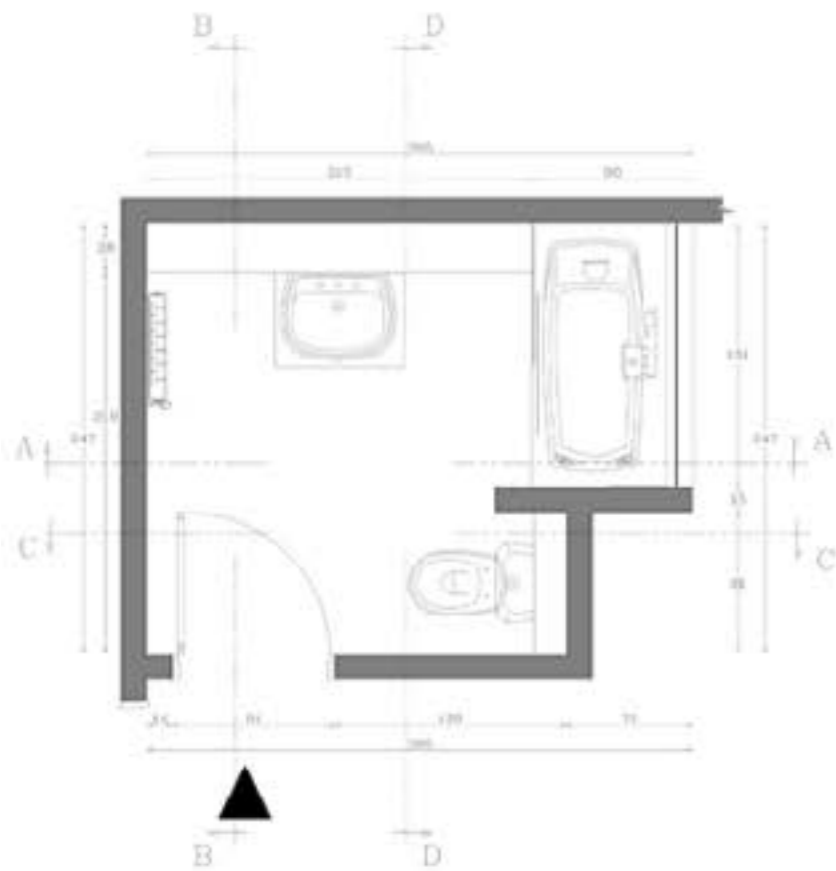
ROOM SECTION 3

High Table Design



ROOM SECTION 4

High Table Design with bathroom window



Section A



Section B



Section C



Section D

BATHROOM

SECTIONS A,B,C & D



FURNITURE BOARD

HOTEL ROOM

HIGH TABLE



High table designed by Cassina to compliment the mini bar, wenge counter top with steel legs and a cylinder stand in the middle holding Capetown's national flower like lamp.

Height from Floor 110 cm, stand length 2 meters



Dimensions: 380 cm X 65 cm



WARDROBE

Customised by Cassina
Sliding doors by Hawaa

Wenge wood beam holding the mechanism of the sliding door and lighting for the wardrobe.
Self-closing drawers & cabinets
Fabric behind glass shelf by Missoni

Room door by Modloft
(Width: 90cm)



BED & HEADBOARD

Customized Bed and commode as one piece and with a bed Head board made with MDF painted panels forming the building theme of Kaap via laser cut machine, designed by Cassina.

Dimensions: 160 cm X 200 cm Built-in lamps instead of side table lamps



ROOM FLOOR PLAN



DURAVIT BATHROOM



140 cm X 75 cm



30 X 130 X 75 cm



39 X 42 X 70 cm

ROOM OFFICE

Desk & Chairs made by Cassina



168 cm X 56 cm

DRESSING TABLE



Zebra Texture Frame



140 cm X 30 cm

Wenge wood

MODLOFT TV LIFT



30 X 130 X 75 cm

SEATING AREA



Fabric made by Missoni
Sofa made by Roche-Bobois
Dimensions: 160 cm X 200 cm
Side table by Modloft
Dimensions: D54 cm with 75 cm height

Happy Violet



HOTEL LOBBY

Floor Plan (scale: 1:100)



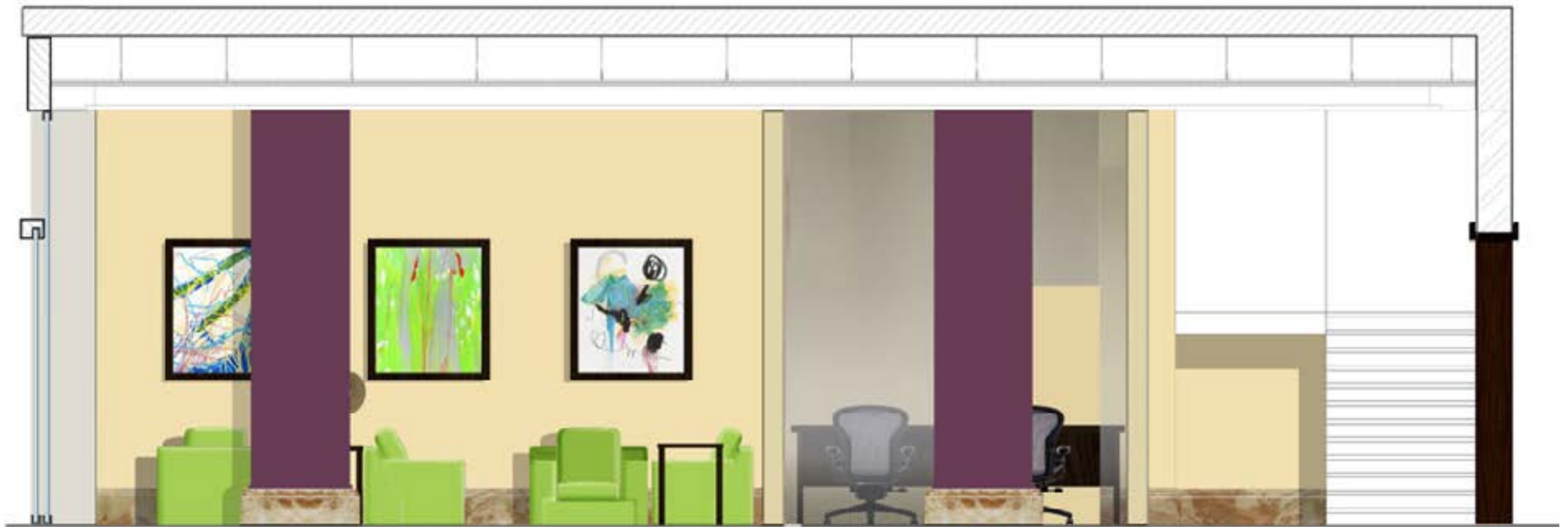
LOBBY SECTION 1

Reception Desk



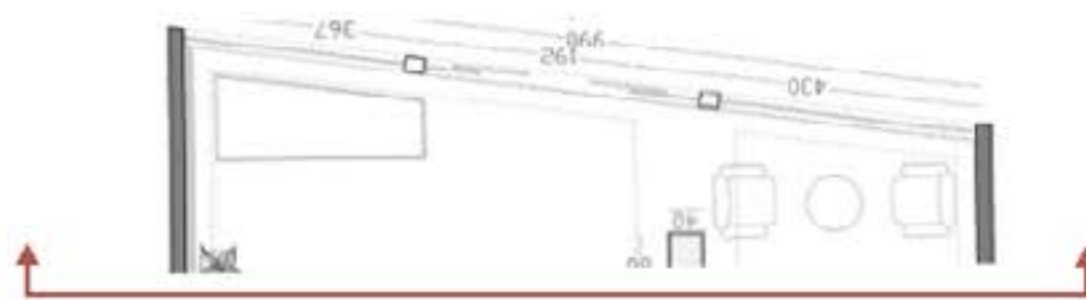
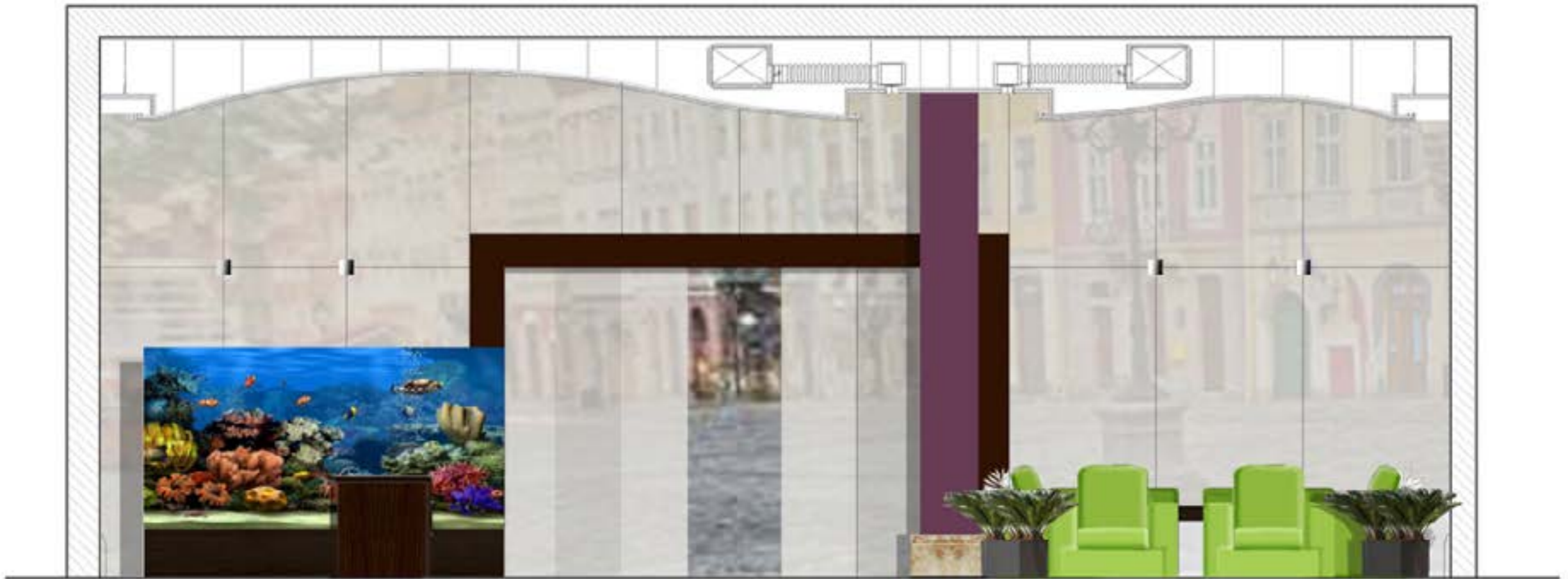
LOBBY SECTION 2

False Ceiling representation



LOBBY SECTION 3

Waiting Area & Wifi Area



LOBBY SECTION 4

Entrance View



FURNITURE BOARD

HOTEL ROOM

Marriott



RECEPTION DESK



Rough Granite wall

Wenge reception counter

AQUARIUM



Aquarium located in front of the entrance wall right beside the entrance door

Beeds display in Wenge wooden box as Cape Town symbolic tradition

LOBBY PAINTINGS



WAITING AREA



Fabric

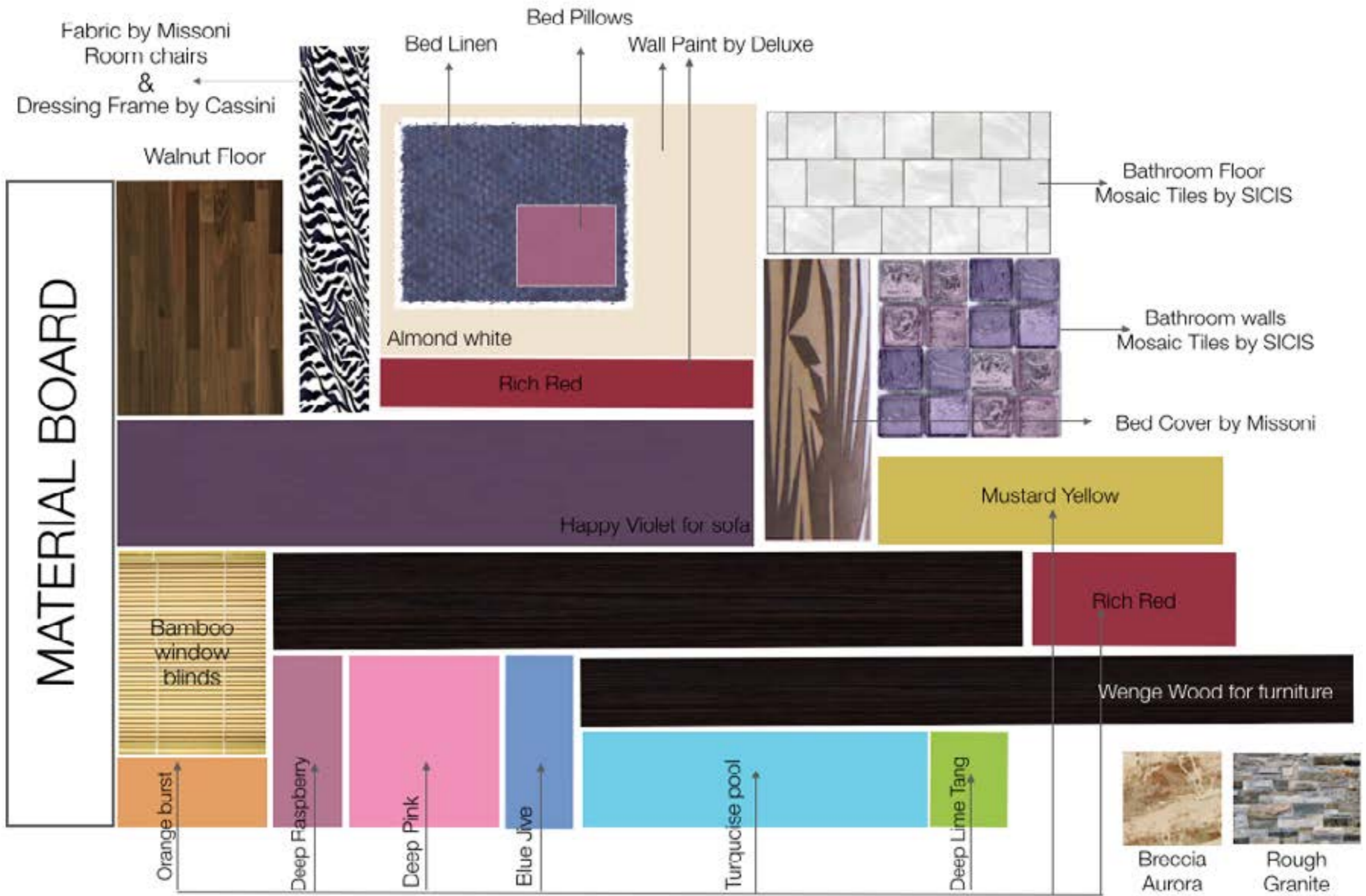
Deep Lime Tang

Fabric made by **Missoni**
Sofas & Armchairs made by **Roche-Bobois**
Dimensions: (160 cm X 200 cm) & (85 cm X 86.5 cm)
Tables made by **Modloft** (80cm X 80cm) & (80cm X 100 cm)

WIFI AREA



Dimensions: 100



Color palette for Hotel Room Wardrobe, Bed & Lobby



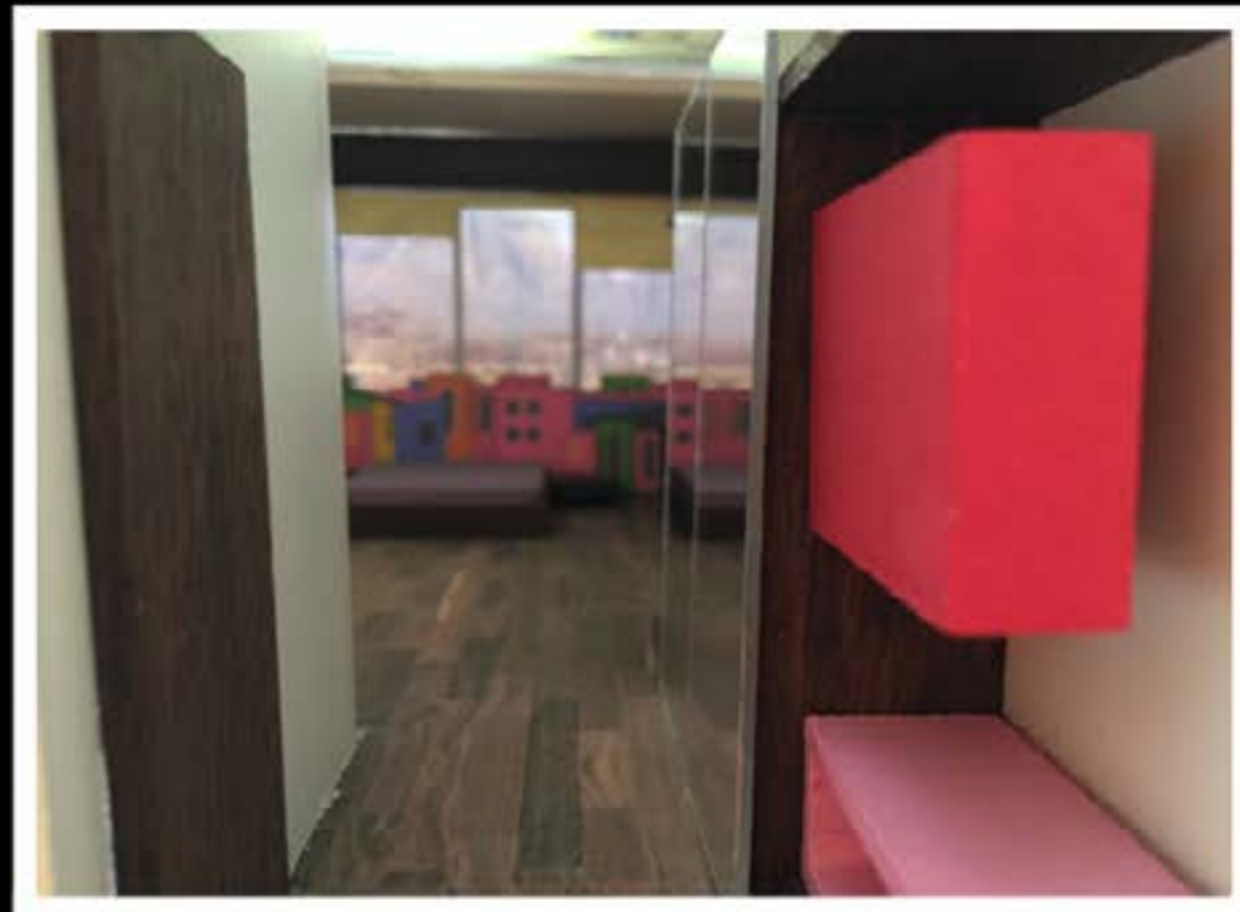
SCALE MODEL

Snap Shots



HOTEL ROOM

Top View



HOTEL ROOM

Perspective views



HOTEL ROOM

Day Light View



HOTEL ROOM

Perspective views



HOTEL ROOM

Perspective views



HOTEL ROOM

Perspective views



HOTEL ROOM

Bathroom



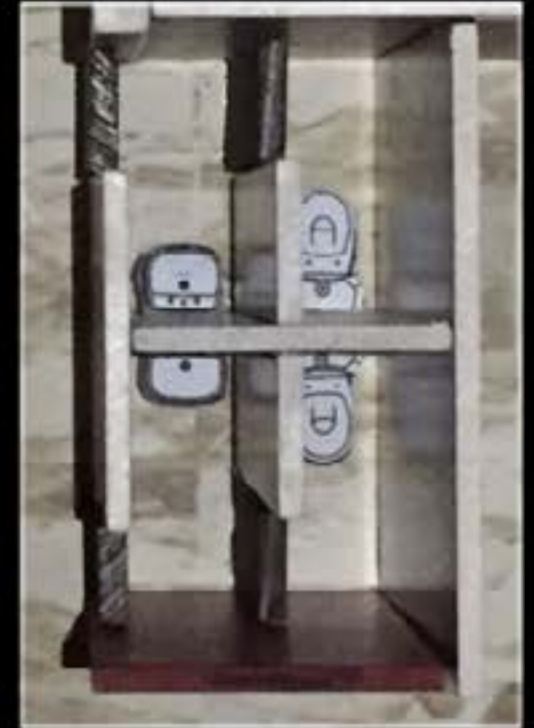
HOTEL LOBBY

TOP VIEW



HOTEL LOBBY

Entrance



HOTEL LOBBY

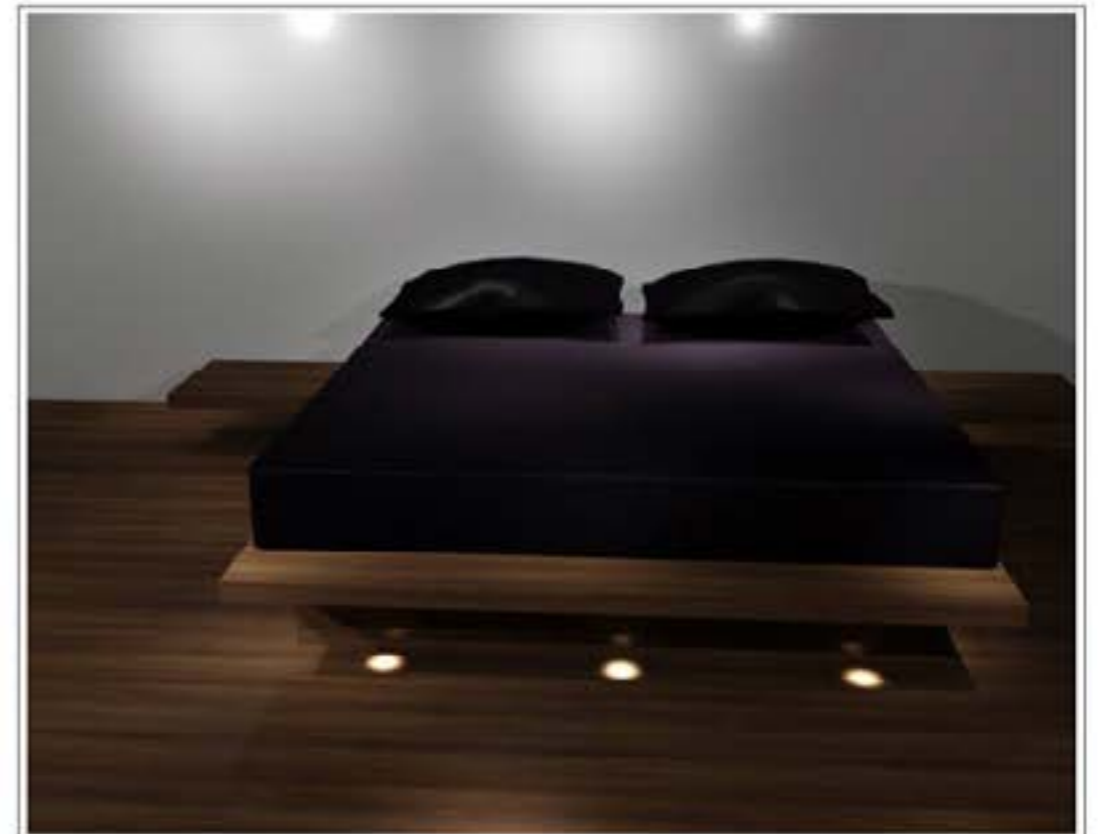
WIFI Area & Bathroom



3D RENDERING

Snap Shots







THANK YOU

