

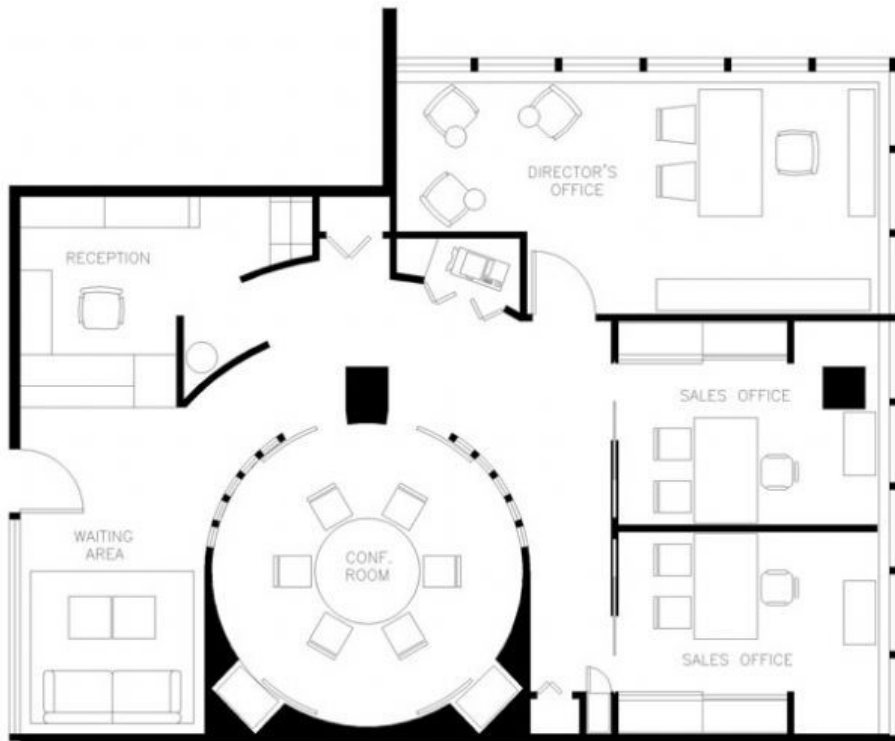


Charity Wachira

DESIGN PORTFOLIO

Wacira interiors office

FLOOR PLAN AND DESCRIPTION OF PROJECT



The project entailed creatively designing an office for an interior design company the key areas being the Directors office the reception and the waiting area thy office was approximatley 33ft by 42 ft the key thing for this project was to bring the office up in terms of design and also make the space functionable



Reception perspective render

Directors office perspective
render





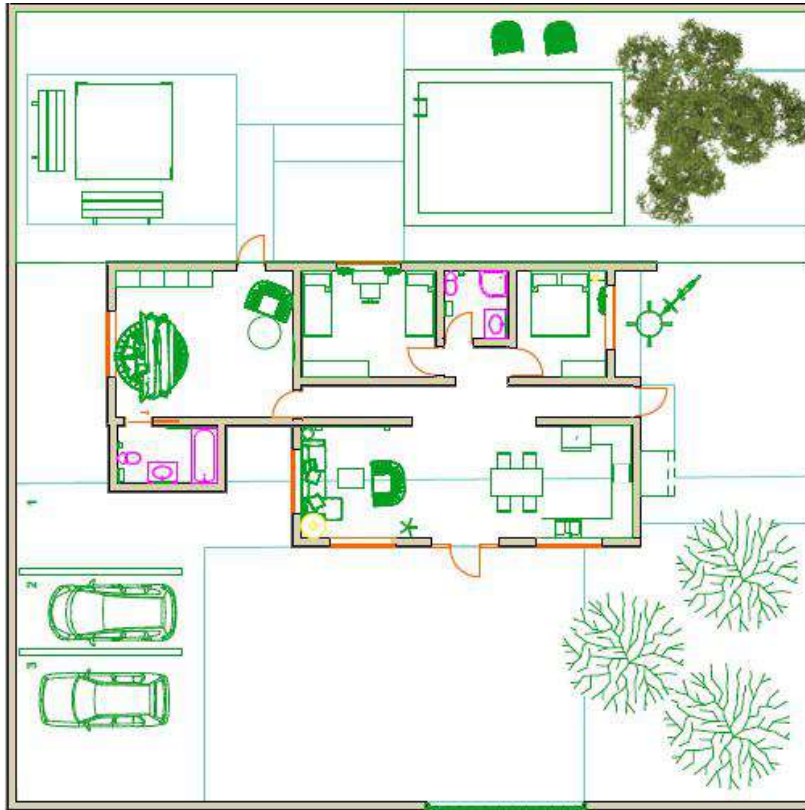
directors office perspective



Boardroomperspective render

3 bedroom Bungalow

FLOOR PLAN AND DESCRIPTION OF PROJECT



The project entailed creatively coming up with renovation ideas of a three bedroom bungalow measurement 47ft by 54ft the projects focused on the living room, kitchen, bedrooms and the back yard



living room perspective render

Open kitchen perspective
render





Master bedroom perspective
render

Master bedroom perspective
render





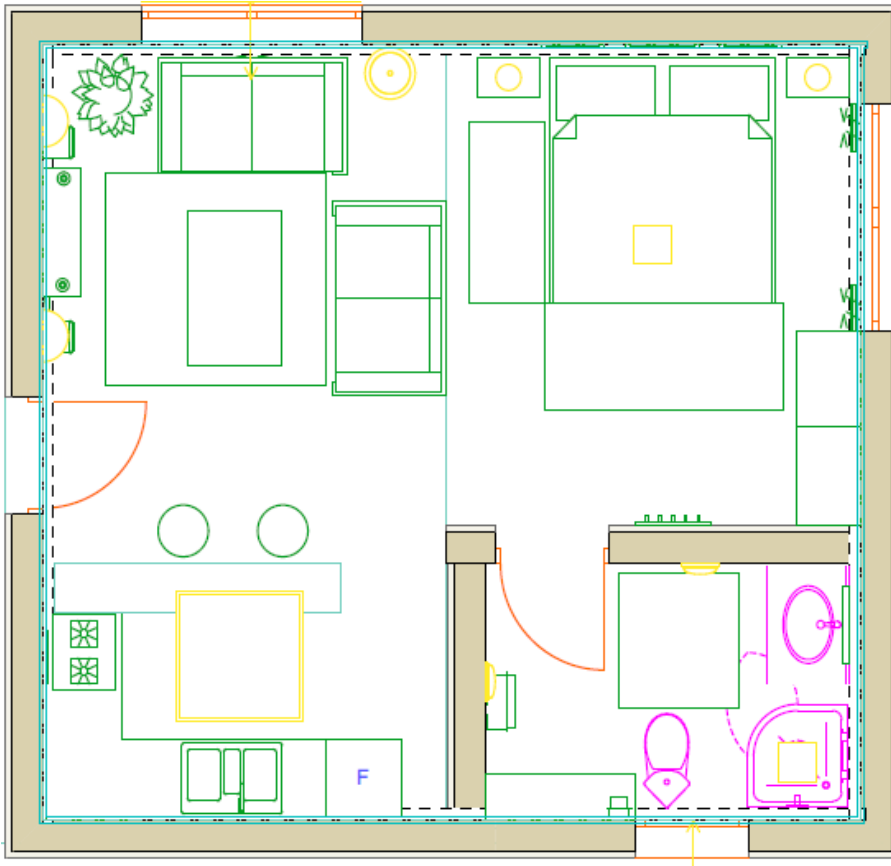
backyard perspective render

backyard perspective render



The Minimalist studio apartment

FLOOR PLAN AND DESCRIPTION OF PROJECT



The project entailed creatively designing a studio apartment that measured 8m x 7 m for a minimalist individual and the key aspects was to make the space simple and functional and at the same time elegant



living room perspective render



Kitchen perspective render



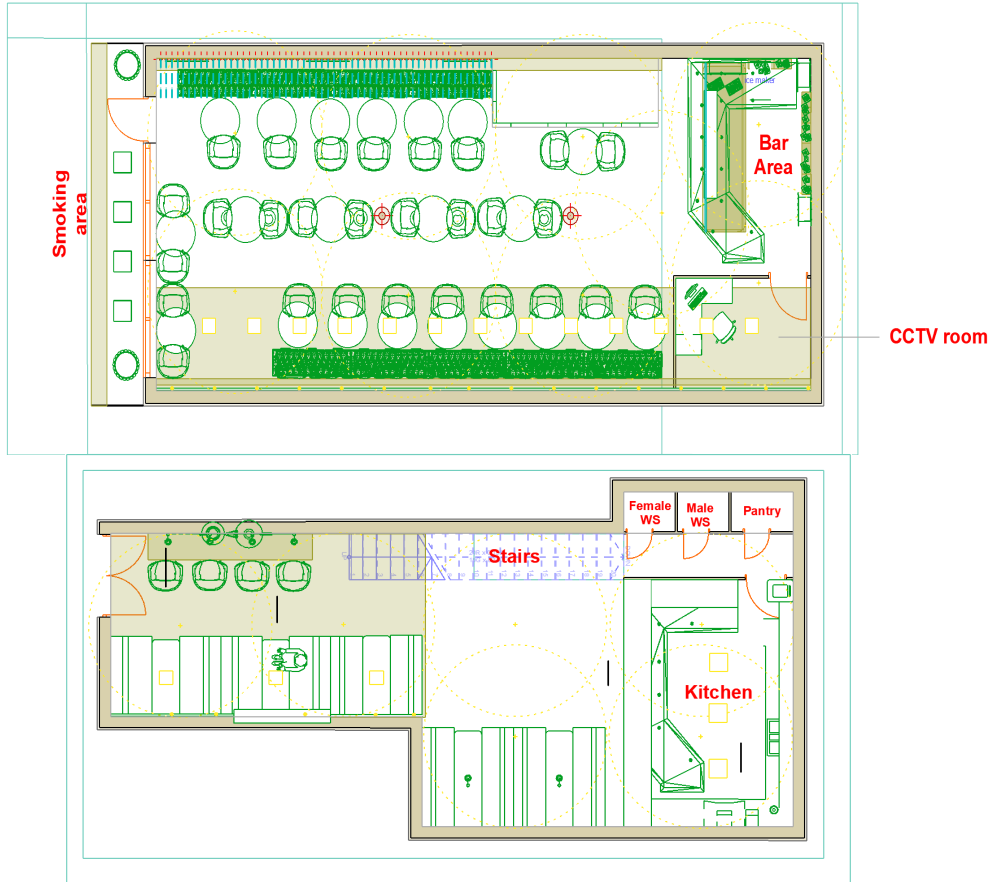
washroom perspective render

Bedroom perspective render



Dine-in Restaurant

FLOOR PLAN AND DESCRIPTION OF PROJECT



The project entailed creatively coming up with renovation ideas of small coffee shop that has two floor. the client wanted the ground floor to have an open kitchen plan that would blend with the seating area and a modern bar on the top floor



upstairs seating area perspective

Upstairs stitting area perspective
render





Open kitchen perspective
render

Bar perspective render

