



# SHINE

## 01 | Safety

- "This proposal is meant to be a design of Enko school, being THE SHINE for the children after the major humanitarian crisis affecting them from the Inter-ethnic conflicts happening in Mali. The school is embracing different beliefs and multiple cultures, all in one proposal follows the character of nature and using local materials integrating within the context and able to accept more students in the future."
- 1- Distances between each staircase is 18-20m
  - 2- Windows are sliding downward, creating handrails
  - 3- Louvers are attached in front of windows for more safety
  - 4- Each extending box is reinforced by steel base and carried by beams and columns

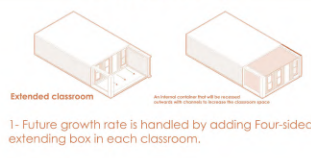
## 02 | Sustainability

- 1- Classrooms catch wind from Northern-east and Southern-west
- 2- Angled Façade to catch wind
- 3- Clerestory roofs in classroom to increase the natural ventilation

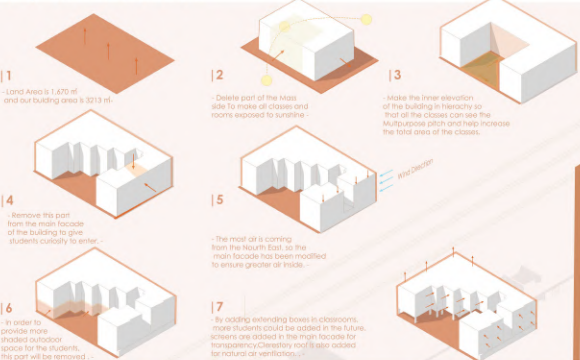
## 03 | Materials & construction

- 1- By using local materials like bricks, concrete, wood and corrugated sheets
- 2- Construction Technique of Flat-slab is a suitable, safe and local one to be used.

## 04 | Adaptability

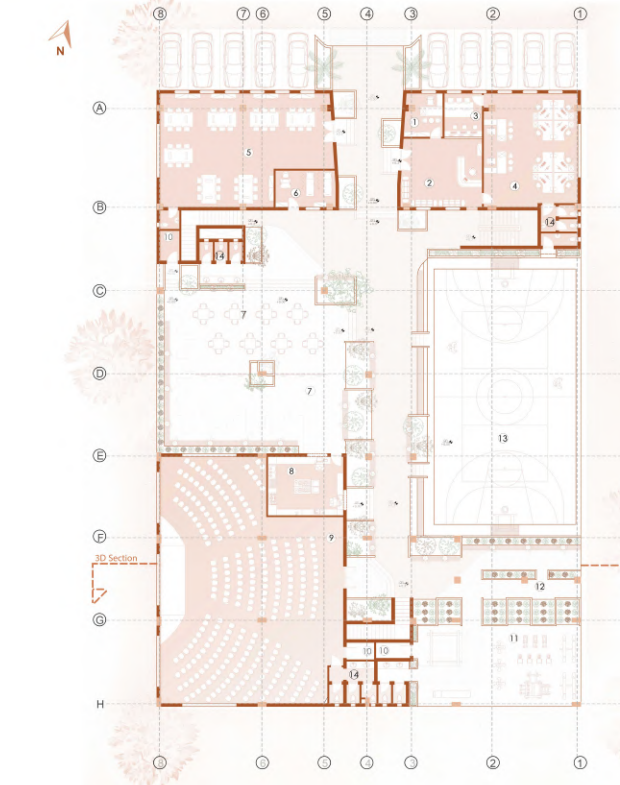


## 01 | Form Generation



## 02 | All Plans

### Master plan



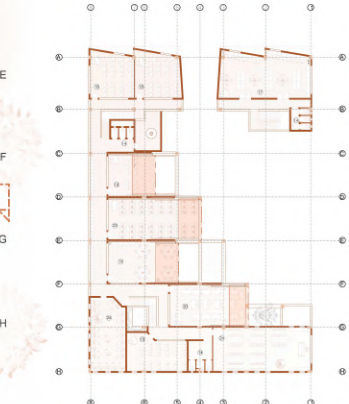
### 1ST Floor



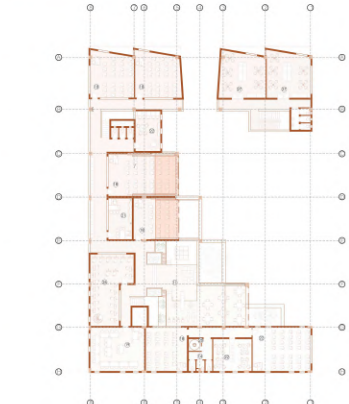
### 2ND Floor



### 3RD Floor



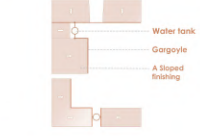
### 4TH Floor



### Key plan

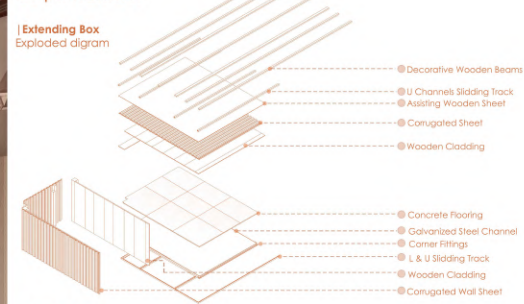
- 1- Security guard vestibule
- 2- Reception
- 3- Finance office
- 4- Admin office
- 5- Staff room
- 6- Infirmary
- 7- Outdoor double height secondary playground
- 8- Canteen
- 9- Multipurpose Hall
- 10- Storage
- 11- Outdoor primary playground
- 12- Multipurpose Pitch
- 13- Flooring Area
- 14- Toilet
- 15- Deputy principal office
- 16- Director office
- 17- Library
- 18- Secondary classroom
- 19- Nursery
- 20- Primary Classrooms
- 21- Coordinator Room
- 22- Group-work room
- 23- ICT
- 24- Science Laboratory
- 25- Science prep room
- 26- Art Room
- 27- Study room
- 28- Water tank room

### Roofing plan

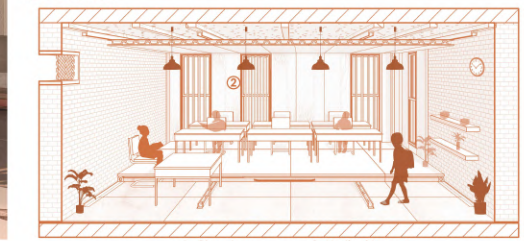




03 | INTERIOR



Extending Box Interior 3D Section



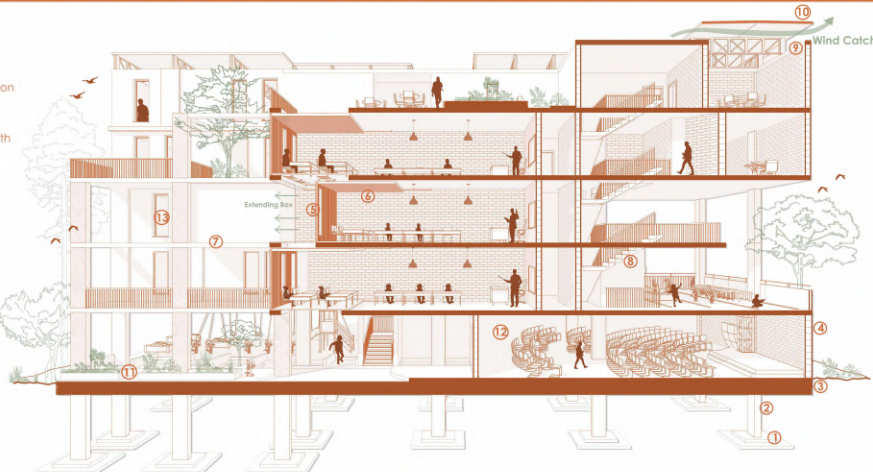
04 | SIDE ELEVATION

05 | MAIN ELEVATION



06 | 3D SECTION

- 1- Solid Concrete Foundation
- 2- Reinforced Concrete Column
- 3- Filing of compacted earth and concrete
- 4- Hollow bricks 24x12x10
- 5- Corrugated Sheets
- 6- Extending Box
- 7- Beams
- 8- Concrete Staircase
- 9- Clerestory roof system
- 10- Metal sloped sheet
- 11- Planting plots
- 12- Multi-purpose Hall
- 13- Wooden windows with glass and louvers



07 | EXPLODED DIAGRAM

We maximized the outdoor spaces by dividing the 1000m exterior space required into one double-height secondary playground next to the secondary classrooms and library, the other outdoor space is a primary playground having children games set and planting plots, both are in the ground floor next to the pitch. In addition to, two outdoor spaces at the first floor with double height, another small one in the third floor and in the last floor, a big one. All connecting students doing different activities.

