



LANDSCAPE PLANTBOOK

Presented to: Dr. Khaled Asfour

Eng. Clara Ashraf

Eng. Radwa Mahmoud

Eng. Sherry Eskarous

Eng. Souhaila El-boughary

Presented by: Rania Yasser Omran

2017/04256

TREES



1. Albizia Julibrissin
2. Araucariaceae excels
3. Cassia Alata
4. Cassia Glauca
5. Cassia Nodosa
6. Chorisia Crispiflora
7. Cupressus Macrocarpa
8. Durranta Erecta
9. Ficus Benamina
10. Ficus Hawaii
11. Ficus Nitida
12. Jacaranda
13. Jatropha Integerrima
14. Koelreuteria Elegans
15. Parkinsonia
16. Pinus Roxburghi
17. Poinciana Regia
18. Spathodea Campanulata
19. Taxodium Distichum
20. Tecoma Castanofolia
21. Tecoma Stans



SHRUBS

1. Acalypha
2. Amaranthus Tricolor
3. Bougainvillea
4. Callistemon Citrinus
5. Canna Indica
6. Clerodendrum Splendens
7. Euphorbia milli
8. Euyropus Acaurus
9. Gazania
10. Hibiscus
11. Lanta Camara
12. Nerium Oleander
13. Ocimum Basilicum
14. Pelargonium Zonal
15. Pennisitum
16. Petunia x Hybrida
17. Plumbago
18. Plumeria Alba
19. Strelitizia Reginae
20. Tecomaria
21. Thevetia Peruviana
22. Wedalia
23. Winca



PALMS

1. Bismarckia Nobilis
2. Chamaerops Humilis
3. Chrysalisocarpus Lutescens
4. Cycas
5. Phoenix Dactylifera
6. Ravenala Madagascariensis
7. Roystonea Regia
8. Syagrus Romanzoffianum
9. Wodyetia Bifurcata
10. Washingtonia Filifera
11. Washingtonia Robusta

Albizia Julibrissin

لبخ رفيع



Trees

Species	Price ⁽¹⁾	Height	Width	Water	Sun
Julibrissin	507 EGP	6-12m	4-8m	15-20Liter/day	Full sun
Genus		Roots	Flowers		Soil
Albizia		0.5-0.7m	Pink spherical flower heads		Well-drained
Blooming ⁽²⁾			Form ⁽²⁾		
April-May			Attractive, Deciduous small tree with rounded crown		
Fruit		Leaves			
Flattened pod, with 8 seeds		light to mid-green, long, many small leaflets sickle-shaped			



El-Azhar Park



Albizia Julibrissin El-Azhar Park



Bougainvillea El-Azhar Park



Duranta Erecta El-Azhar Park

Grouping: The whole group mood: (Attractive – Elegance)

Albizia Julibrissin is a weak, fast-growing and short-lived tree. It creates an umbrella shape flower that has a silk texture that appears transparent in the sun with pink degraded to white color giving a calm mood to any viewer. The Pleasing feather leaves fold up by night which makes the tree gives **dynamic** mood. The tree is very **adoptable** to all kind of condition. It's trunk is so beautiful and strong as it grows horizontally makes a perfect shadow in any garden. This tree is rare in Egypt. Used in public spaces for Meditation and romance. Albizia julibrissin is attractive to bees, butterflies and birds. This tree is making a great special element in any garden with a grouping of **Bougainvillea** as a climber shrub besides it making a great **skeleton** background by it's evergreen ovate shaped leaves and the bushy soft purple and pink flowers which have a tiny white flowers inside that make the grouping very **attractive** from afar. In the second layer comes the **Duranta Erecta** acts as a perennial **decorative** shrub that is creates the **elegance** the grouping needs due to its evergreen leaves color and the texture of the leaves fits the grouping the most by it's softness.

Garden Type:

Modern Gardens are having the Albizia Julibrissin in their fields the most because of it's no symmetry, high quality finish and executive look made by it's amazing flowers.

Keywords:

Dynamic
Adoptable



El-Azhar Park



El-Azhar Park

References: ⁽¹⁾ <https://www.mashtalegypt.com/product/floss-silk-tree/>

⁽²⁾ A PLANT GUIDEBOOK FOR AL-AZHAR PARK AND CITY OF CAIRO Page 73

Key Words

Mood

Layers Technique

Layers



Madinaty



Madinaty

Araucariaceae excelsa

شجرة عيد الميلاد



Trees

Species	Price ⁽¹⁾	Height	Width	Water	Sun
Excelsa	350EGP	20-30m	5-8m	40-50Liter/day	Full-Sun
Genus		Roots	Flowers		Soil
Araucaria		1-1.2m	Spherical and conical shapes		well-drained
Blooming ⁽²⁾			Form ⁽²⁾		
June-July			Evergreen, conical, symmetric, branches of fan-like foliage		
Fruit		Leaves			
bract scale Vertical shoot		Narrow, wodge-shaped, light green, overlapping			



Madinaty

Garden Type:

Formal gardens contain this tree so much due to its symmetric shape and symmetric planning and for also the power it gives by its fissured trunk and unique needle leaves.

Keywords:

Gloomy
Unique
Attractive



Cupressus Macrocarpa Madinaty



Cycas Madinaty



Durranta Erecta El-Azhar Park

Grouping: The whole group mood: (Unity – Formal – Elegance)

Araucaria excelsa is a large evergreen conifer with distinctive pyramidal shape. It's very representative to any symmetric tree and the most one known by it's very unique shape that is attracting to any viewer who stop immediately to stare at it's beauty made by it's needle leaves that have the leathery glossy texture none of the trees are known by except the amazing Araucaria excels. Also it's trunk are so Fissured which make it gloomy but still unique and attractive. It could be a special element in our grouping that contains the Cupressus Macrocarpus acting as a decorative element that makes a great combination with that tree by it's margin branched leather textured leaves also by it's bright green color that makes a great contrast with those of Araucaria excelsa that makes the grouping in more unity and comes in the second layer the beautiful cycas that acts like a decorative element in the ground and it fits so much that stripe grouping by it's dark green leaves that are grown upward and the symmetry in its shape fits those of the araucaria tree so much also it's small little thrones trunk which has a dark brown color that has made the formal shape this grouping would be in by also it's third layer of durranta erecta acts as a perennial decorative shrub that is creates the elegance the grouping needs due to its evergreen light leaves color and the texture of the leaves that make a softness in the grouping.

References:

- (1) <https://www.mashtalegypt.com/product/norfolk-island-pine/>
- (2) A PLANT GUIDEBOOK FOR AL-AZHAR PARK AND CITY OF CAIRO Page 77

Key Words

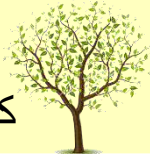
Mood

Layers Technique

Layers

Cassia Alata

كاسيا ألاتا



Trees

Species	Price ⁽¹⁾	Height	Width	Water	Sun
Alata	360EGP	1.5-2m	Up to 1m	40-50Liter/day	Full-Sun
Genus		Roots	Flowers		Soil
Cassia		0.3-0.5m	Bears numerous bright yellow		well-drained
Blooming ⁽²⁾			Form ⁽²⁾		
May-June-July			Deciduous small tree or shrub		
Fruit		Leaves			
long with seeds		Broadly oblong to obovate, pinnate leaves, bright green leaflets			



Madinaty



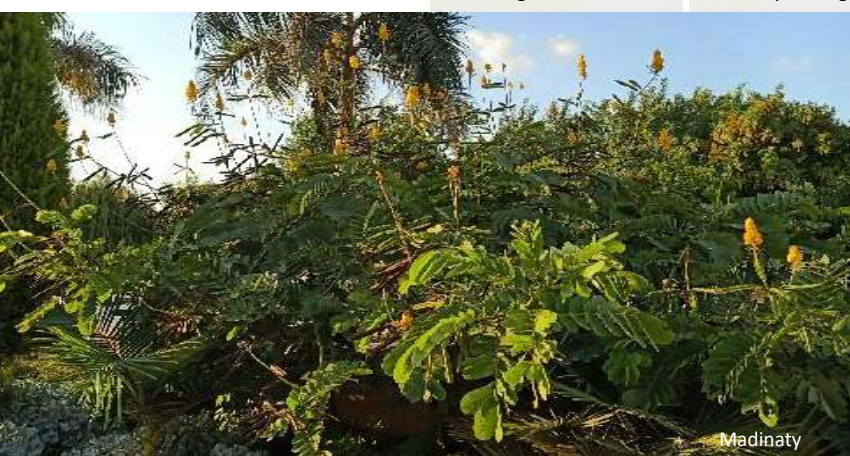
Cassia Alata Madinaty



Ocimum Basilicum Madinaty



Euyropus Acaurus Madinaty



Madinaty

Garden Type:

Mediterranean garden for its colorful, passionate, warm, cheerful flowers and the shade and shadow it makes on itself and Productive garden due to its medical usage of flowers.

Keywords:

Landmark
Defensive

Grouping: The whole group mood: (Vibrant – Warmness)

Cassia Alata is a large shrub that grows horizontally, so its acting as a **landmark** in any zone. It's yellow sword like or candles flowers attracts the eyes for it's shape uniqueness and also gives a warm **defensive** mood for any passerby. Any viewer would stop and stare to it as it has also a great green leaves that closes in the dark and contains two rows of oval evergreen leaves making one clustered big leave. The Cassia Alata could be used as a **Skeleton** backdrop to the grouping sense that emphasizes the vertically of **Ocimum Basilicum** as the first layer for this grouping. It acts as a **decorative** perennial shrub that has a white linear flowers that also grows vertically which will approve the defensive effect of cassia alata also it's evergreen colored leaves that makes a great contrast that improves the effect of **warmness** as well as those linear vertical leaves of **Euyroups Acaurus** that presents as a **decorative** element in the third layer, it has a great shape fits those of cassia alata and ocimum basilicum also it's yellow, oblong and smooth leaf textures. To sum up, the whole stripe group that has the **vibrant** and warm impression.

References:

- (1) <https://www.mashtalegypt.com/product/yellow-elder/>
 (2) A PLANT GUIDEBOOK FOR AL-AZHAR PARK AND CITY OF CAIRO page 209

Key Words

Mood

Layers Technique

Layers



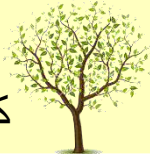
El-Azhar Park



El-Azhar Park

Cassia Glauca

كاسيا جلوكا, صفار



Trees

Species	Price ⁽¹⁾	Height	Width	Water	Sun
Cassia	345 EGP	3m-6m	2m-3m	60-80liter/day	Full-Partially
Genus		Roots	Flowers		Soil
Galuca		30-50 cm	Small Yellow makes bunch		Well-Drained
Blooming ⁽²⁾			Form ⁽²⁾		
May-June-July-August			Small Tree or Large Shrub has round shape		
Fruit		Leaves			
Narrow five-lobbed achene		Dark Green Leaves each having seven nice pairs of oval leaflets			



El-Azhar Park

Garden Type:

Mediterranean for its bright yellowish colored that gives the very vibrant effect in the atmosphere. Also Due to it's unique leaves that gives a bold noticeable texture.

Keywords:

Relaxing
Joy
Optimistic



Cassia Galuca El-Azhar Park



Yellow Lantana El-Azhar Park



Red Vinca MIU campus

Grouping: The whole group mood: (Relaxation – Vibrant – Energetic)

The Showy Cassia Galuca Tree has unique dark leaves of compound oval leaflets, they are so soft and gives the **relaxing** mood when wind blooms. The joyful and **optimistic** striking yellow flowers makes it clearly observed from far away and gives any passerby the feeling of optimism, joy and happiness. It is highly noticeable as it's small flowers fill the branches randomly which gives a free informal **joyful** mood. Cassia Galuca Creates a beautiful view standing alone and also in a group of yellowish or warm color flowers just like it's own. In any group cassia galuca presents the **skeleton** part of an optimistic grouping having the **Yellow Lantana Camara** as the first layer that acts like the **decorative** element in the grouping by it's little droplets of yellow petals that makes a bright loop layer and optimistic joy mood. And also it's leaves are great in wind blooming by giving the garden a sense of **relaxation**. The **decorative** groundcover **Red Vinca** could be added to give more warm **energetic** mood to the grouping as the second layer to be a ground cover and by it's horizontal plan flower that has the smooth texture needed to the comforting mood. The saturation effect of **Vibrant** feelings that spread upon such grouping could be best in parks and public gardens.

References:

- (1) <https://www.mashtalegypt.com/product/scrambled-egg-tree/>
- (2) A PLANT GUIDEBOOK FOR AL-AZHAR PARK AND CITY OF CAIRO page 87

Key Words

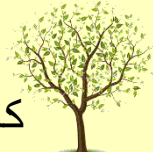
Mood

Layers Technique

Layers

Cassia Nodosa

كاسيا ندوزا، العشرق



Trees

Species	Price ⁽¹⁾	Height	Width	Water	Sun
Nodosa	1050 EGP	10-15m	6-8cm	60-80Liter/day	Full Sun
Genus		Roots	Flowers		Soil
Cassia		0.5-0.7m	So attractive, dense, pink to white		well-drained
Blooming ⁽²⁾			Form ⁽²⁾		
6-7-8-9-10			Spectacular, medium, fast growing, umbrella-shaped crown, horizontal large branches		
Fruit		Leaves			
brown pods cylindrical shaped		Feathery, Composed of 14-24 oblong leaves, pound leaflets			



Madinaty



Madinaty



Madinaty

Garden Type:

Mediterranean Gardens have cassia nodosa in thier fields due to the perfect scaling it has and the vibrant colors it contains in its flowers and the bold texture it has in trunk and leaves.

Keywords:

Relaxing
Calmness



Cassia Nodosa Madinaty



Lantana Madinaty



Vinca Madinaty

Grouping: The whole group mood: (Neutral – Hope)

Cassia Nodosa is a deciduous tree with linear compound leaves comprised of oval leaflets that has soft texture gives a dynamic mood to any passerby due to it's light weight that make it move during any wind coming. It is covered with variegated cluster of degraded pink to white colored flowers that tend to bloom in spring or summer, when it is warm and dry and giving the best feeling for **relaxation** and **calmness**. It's trunk is very ordinary and strong that carries the horizontally growing tree which creates a great shading to streets. It acts as a **special** element in a group having the **pink lantana** shrub in the first layer as a **decorative** element creating more of the **hope** feeling the color of the clustered flower gives. Also it's leaves are evergreen oval shaped having the perfect dense that matches the amazing tree.in the second layer as a ground cover there is the beautiful white **winca** that creates the best **decorative** element in this stripe grouping by having the planed white flower that gives the **neutral** calm effect to any viewer and a great contrast between the dark green color of its oval leaves that make attraction to the passers.

References:

- (1) <https://www.mashtalegypt.com/product/apple-blossom-cassia/>
 (2) A PLANT GUIDEBOOK FOR AL-AZHAR PARK AND CITY OF CAIRO page 88

Key Words

Mood

Layers Technique

Layers

Chorisia Crispiflora

كوريزيا



Trees

Species	Price(1)	Height	Width	Water	Sun
Speciosa	1000EGP	15-20m	till 10 m	60-80Liter/day	Full sun
Genus		Roots	Flowers		Soil
Chorisia Syn. Ceiba		50-70 cm	Clusters white-pink to the tips		humus-rich
Blooming(2)			Form(2)		
Feb.-March-April-May			Large deciduous, bottle shaped trunk, green turn dark gray		
Fruit		Leaves			
fibrous-like cotton or silk		Compound, palmate, 5 - 7 cm long leaflets			



El-Azhar Park



El-Azhar Park



El-Azhar Park

Garden Type:

Mediterranean Gardens, Due to it's Trunk that has spikes which gives bold texture, and the horizontal branches that make shade and shadow and the delicate pinkish-yellow flowers.

Keywords:

Attractive
Elegant
Contrast
Aggressive



Alycpha Madinaty



Wedalia El-Azhar Park



Duranta Erecta El-Azhar Park

Grouping: The whole group mood: (Protective – Delightful – Energetic)

Chorisia Crispiflora is a very **attractive** and **elegant** tree, but it has a very **aggressive** side as the trunk is full of spikes. It has a very attractive glossy bright green oval-shaped leaves and delicate pinkish white petals flowers which creates a great **contrast** between the flowers and the trunk. Chorisia Crispiflora tree acts as **special** in any group and for this Stripe form grouping of three layers. First Layer **Alycpha Pretties** shrub that has a rough tooth like coppery brown leaves that makes a buffer zone or a defensive fence between users and the aggressive strike trunk of the chorisia crispiflora tree. We would add, in the Second Layer, **Wedalia** as a **decorative** perennial that is going to provide a **delightful** atmosphere for its tiny yellow flower heads and elliptic dark green leaves. And also it's strike branches is so like the strike trunk of the tree that is making a harmony and hierarchy in the grouping. For the Third Layer **Duranta Erecta** that perennial **decorative** shrub could be added to sum up, the whole group by giving an **energetic** mood by it's bright green leaves that would also be a buffer zone between the users and the strike branches of the wedalia. The strike grouping is perfect for the Mediterranean and foliage gardens.

References:

<https://www.mashtalegypt.com/product/floss-silk-tree/>
(2) A PLANT GUIDEBOOK FOR AL-AZHAR PARK AND CITY OF CAIRO page 94

Key Words

Mood

Layers Technique

Layers

Cupressus Macrocarpa

السرو الليموني



Trees

Species	Price ⁽¹⁾	Height	Width	Water	Sun
Macrocarpa	300 EGP	10-12m	4-5m	40-50Liter/day	Full Sun
Genus		Roots	Flowers		Soil
Cupressus		0.5-0.7m	Cone shapes 2.5-3cm radius		Acidic-Alkaline
Blooming ⁽²⁾			Form ⁽²⁾		
May-June			Unique standing alone conical shape tree preading tree		
Fruit		Leaves			
No fruit		Aromatic grey leaves, Spiny, Pointing, Overlapping leaves			



Madinaty



Ficus Nitida Madinaty



Amaranthus Madinaty



solenostemon scutellarioides Madinaty

Grouping: The whole group mood: (Decent – Bold – Noticeable)

Cupressus Macrocarpa is a Cone-shape tree that has opposite branched over lapped evergreen leaves making it **remarkable** by it's unique teddy shape that is always in motion yet **steady** by it's dense. It's so pleasant by it's lemon scent and it's **formal** shape that could be cut into different shapes. This **Special** shrub or little tree could be standing alone and also be a added to many groupings to infill them, decorate or making itself the special part in it. In this grouping we will add **Ficus Nitida** in the first layer to be the **skeleton** tree and act as the evergreen background by it's dense form to give the cupressus macrocarpa the priority in showing it's beautiful **decent** shape in any formal garden. In addition to the annual **pretties** shrub **Amaranthus** that makes a great contrast during it's brownish purple leaves with the light green ones in cupressus and also the contrast is admitted more by the scale of the leaves as it's huge soft textured leaves in amaranthus that gives the grouping more **noticeable** appearance. **Solenostemon Scutellarioides** comes to make the grouping more defined and **Bold** by it's mixed color leaves as it mixes between the brownish purple color of amaranthus and the light green color of cupressus that sums up all the grouping in that formal shape. Also it's leaves texture and form is mixed between the texture of cupressus and the amaranthus form. This Stripe grouping is perfectly suitable for the formal and Mediterranean garden types.



Madinaty

Garden Type:

Formal gardens as its cone or oval symmetrical shape and its lemon noticeable smell, which can be used in classical buildings and give the control and power mood.

Keywords:

Remarkable
Steady
Formal



Madinaty

References: ⁽¹⁾ <https://www.mashtalegypt.com/product/italian-cypress/>

⁽²⁾ A PLANT GUIDEBOOK FOR AL-AZHAR PARK AND CITY OF CAIRO page 102

Key Words

Mood

Layers Technique

Layers

Durranta Erecta

دورنتا خضراء



Trees

Species	Price ⁽¹⁾	Height	Width	Water	Sun
Erecta	60EGP	2-3m	1-1.5m	15-20Liter/day	Full sun
Genus		Roots	Flowers		Soil
Duranta		40-60 cm	Simple pale blue clusters		Well-drained
Blooming ⁽²⁾			Form ⁽²⁾		
July-August-September			Spreading evergreen bearing spiny green stems and branchlets		
Fruit		Leaves			
Yellow weeping, small fruits		Simple-serrated, some are green-white and others golden leaves			



El-Azhar Park



El-Azhar Park



El-Azhar Park

Garden Type:

It's common shape that could fit any grouping make it flexibly fitting in more than garden type such as foliage, cottage, modern and Mediterranean gardens as it's dense could be shaped.

Keywords:

Attractive
Balance
Serenity



Cycas Madinaty



Durranta Erecta El-Azhar Park



Euyropus Acareus Madinaty

Grouping: The whole group mood: (Welcoming – Joy – Attractive)

Durranta Erecta a vigorous fast growing evergreen shrub. It's mostly used as Hedge, border plant, lawn specimen or train as small tree in warm climates and it is also used as a transitive shrub or as boundaries for any garden. It also could have a golden color that makes it **attractive**, refreshment and **serenity**. Also it's dense of oval glossy leaves make it give the **balance** effect in any garden due to it's symmetric and easily shaping form. It could be placed beside any type of plant, tree, shrub or palm or even standing alone giving the border shape mentioned before. It acts as a **decorative** annual shrub in any group and in our grouping we will also use it as a decorative element beside the **special** element of the mini palm **Cycas** which will make a great contrast by it's dark green palmy leaves and rough brownish trunk with the durranta erecta that will make it attracts more eyes. in the second layer will be a great interlacing between the **Cladenthus Arabicus** and the **Euroyps Acareous** they will match the colors and the leaves type as they both have the innocent bright yellow color that gives **joy** and cheerfull mood in any grouping and also the unique linear leaves they both have that are different from those of the durranta which will make also eye catching to the passer eyes and sum up this cluster interlacing grouping by **welcoming** mood.

References:

- (1) Mashtalal Yasmin, Ibrahim gardenman
- (2) A PLANT GUIDEBOOK FOR AL-AZHAR PARK AND CITY OF CAIRO page 94

Key Words

Mood

Layers Technique

Layers



MIU Campus



MIU Campus

Ficus Benjamina

فيكس بينجامانا



Trees

Species	Price ⁽¹⁾	Height	Width	Water	Sun
Benjamina	210 EGP	6-30m	Up to 15m	15-20 Liter/day	Full Sun
Genus		Roots	Flowers		Soil
Ficus		1-1.2m	enlarges to form the fig fruit		well-drained
Blooming ⁽²⁾			Form ⁽²⁾		
July-August			Evergreen tree, large shrub, slender, arching to pendent stems.		
Fruit		Leaves			
Spherical to oblong figs		Ovate-elliptic, leathery, dark green above, lighter beneath, slender			



MIU Campus

Garden Type:

Could be used in many garden types but mostly in Formal Gardens as its dense make it cut into geometrical balanced symmetrical shapes that gives power and control.

Keywords:

Delight
Neutral



Bougainvillea El-Azhar Park



Lantana Camara El-Azhar Park



Durranta Erecta El-Azhar Park

Grouping: The whole group mood: (Diversity – Energetic – Harmony)

Ficus benjamana is an evergreen tree that can also be grown as a shrub or houseplant. It has glossy, attractive ovate dark green leaves that makes a great **delight** effect to any plant beside it. Its trunk is very strong and regular in shape with no unique feature. It fits in any grouping giving it an amazing light and delightful mood due to its green leaves. It has no either flower or fruit to be shown so it is a **neutral** tree all the ways. It could be put as a **decorative** tree in a grouping of **Bougainvillea** as a climber shrub besides it making a great **skeleton** background by its evergreen ovate shaped leaves and the bushy soft purple and pink flowers which have a tiny white flowers inside that make the grouping very attractive from afar. Also the **yellow lantana camara nana** which has a cluster yellow flowers that gives the **energetic** mood to any viewer also by its evergreen ovate shaped leaves that make a great contrast between the light grouping and the strong shape it has which give **diversity**. In the third layer comes the **durranta erecta** ending all this cluster group with its light green oblong shaped leaves by a **harmonic** mood.

References:

- (1) <https://www.mashtalegypt.com/product/weeping-fig/>
 (2) A PLANT GUIDEBOOK FOR AL-AZHAR PARK AND CITY OF CAIRO page 117

Key Words

Mood

Layers Technique

Layers

Ficus Hawaii

فيكس هاواي



Trees

Species	Price(1)	Height	Width	Water	Sun
microcarpa	420EGP	3-6m	1-3m	15-20Liter/day	Full Sun
Genus		Roots	Flowers		Soil
Ficus		1-1.2m	no flower		Well-drained
Blooming(2)			Form(2)		
All the year			evergreen tree with grey-green degraded to white, elliptic leaves		
Fruit		Leaves			
no fruit		oblong, elliptic, glabrous, margins entire			



Madinaty



Google



Madinaty

Garden Type:

Could be used in both formal and Mediterranean garden for its bright color and its symmetrical planning and the dense leaves it has that make it could be shaped in geometrical shapes.

Keywords:

Neutral
Adaptable



Ficus Benjamana MIU Campuss



Dafla Madinaty



Durranta Erecta El-Azhar Park

Grouping: The whole group mood: (Calm – Uniform – Harmony)

Ficus Hawaii is an evergreen tree that can also be grown as a shrub or houseplant. It has glossy, attractive elliptical degradative bright green leaves that makes a great delight effect to any plant beside it. It's trunk is very strong and regular in shape with no unique feature. It fits in any grouping giving it an amazing light and delightful mood due to it's light green to yellow leaves. It has no either flower or fruit to be shown so it is a **neutral** tree all the ways. It could be shaped due to its dense to any geometric shapes which make it a flexible or **adaptable** plant. It could be put as a **decorative** tree in a grouping of **Ficus benjamana** in the first layer acting as a **skeleton** background tree due to its dense evergreen shape and it's glossy smooth textured leaves that fits those of the ficus Hawaii the most giving a formal **uniform** shape by its contrast in color. **Dafla** in the second layer giving the romantic mood by it's soft delicate pink flower that creates **calmness** to the grouping and by also its great contrast between its evergreen dense leaves and the bright flower it has as a pretties attractive shrub with the beautiful ending the **durranta erecta** comes in the third layer ending all this cluster yet stripe group with it's light green oblong shaped leaves by a **harmonic** mood.

References:

(1) El-yasmina Masshtal

(2) [https://www.rhs.org.uk/Plants/93080/Ficus-microcarpa-Hawaii-\(v\)/Details](https://www.rhs.org.uk/Plants/93080/Ficus-microcarpa-Hawaii-(v)/Details)

Key Words

Mood

Layers Technique

Layers

Ficus Nitida

فيكس نيتيدا



Trees

Species	Price(1)	Height	Width	Water	Sun
Nitida	195 EGP	9-18m	9m	30-50Liter/day	Full Sun
Genus		Roots	Flowers		Soil
Ficus		1-1.2m	Monoecious, enclosed to be afruit		well-drained
Blooming(2)			Form(2)		
June-July			Large, evergreen, growing branches and dense spreading crown		
Fruit		Leaves			
Spherical small, green		Dark green, small, pointed oval, held in ascending branches			



Madinaty



Madinaty



Madinaty

Garden Type:

Could be used mostly in Formal Gardens as it's dense make it cut into geometrical balanced symmetrical shapes that gives power and control.

Keywords:

Uniform
Dense
Classic
Balance



Vinca Madinaty



Acalypha Madinaty



Euphorbia Milli Madinaty

Grouping: The whole group mood: (Formal – Neutral)

The Ficus Nitida is our daily routine scene, the ordinary tree that attracts no attention. It's simple dense branches can yet be trimmed into geometric shapes that may attract the eye by it's **uniform, classical** shape. It has Glossy, Medium oval-shaped leaves that is thick gives the tree it's strong **balanced** shape. It's showy neutral trunk blooms no flower all the year. The **Skeleton** tree is fitting in so many grouping. It could be added to several layers of different trees and shrubs and fit with them all. In this grouping we are going to add in the First Layer **Acalypha** which has a rough textured leaves of coppery brown color and tooth-like shape that makes a **pretties** shrub in the group giving the **formal** shape. In the Second Layer come the **decorative** shrub **Euphorbia milli** which has a spike branches that gives the protective and safe mood that are neutralized by acalypha and duranta erecta if added. And it's red color make a **balance** and **neutral** mood with the winca white color. Comes in the Third Layer the **vinca** perennial **infill** shrub that has a beautiful white color fan-like horizontal flowers with no depth that are also growing in pairs like the euphorbia milli. This stripe grouping could be added in formal and Mediterranean gardens.

References:

(1) <https://www.mashtalegypt.com/product/weeping-fig/>

(2) A PLANT GUIDEBOOK FOR AL-AZHAR PARK AND CITY OF CAIRO page 123

Key Words

Mood

Layers Technique

Layers

Jacaranda

جكراندا



Trees

Species	Price ⁽¹⁾	Height	Width	Water	Sun
ovalifolli	925 EGP	10-15m	7-10m	40-50Liter/day	Full Sun
Genus		Roots	Flowers		Soil
Jacaranda		0.5-0.7m	Broadly pyramidal panicles		Well-drained
Blooming ⁽²⁾			Form ⁽²⁾		
March-April-June			Large, spreading, deciduous tree		
Fruit		Leaves			
Woody		pinnate, small, narrowly elliptic, softly hairy, bright green leaflets.			



Madinaty



Madinaty



Madinaty

Garden Type:

Mediterranean Gardens, Due to it's unique leaves that gives a bold texture, and the horizontal branches that make shade and shadow and the delicate purple cluster flowers.

Keywords:

Charismatic
Elegant
Comfortable



Ocimum Basilicum Madinaty



Duranta Erecta El-Azhar Park



Ostiospermum Fruitcosum Madinaty

Grouping: The whole group mood: (Harmony – Elegance)

Jacaranda is a **charismatic** tree that is noticeable from afar due to it's unique flowers shape that are purple bell-shaped and in cluster that appear pointed shaped petals. These **elegant** flowers respond to the freely air movements as a contrast with the green pinnately compound leaves. It will be so special to be used as a focal point as it will make visitors easily stop and stare towards it for a long time, creating a strong **comfortable** environment for visitors. This amazing elegant tree gives the atmosphere a perfect stand-alone and it's also acts as a **special** in any grouping it is added to. In the first layer of this grouping we will add the **Ocimum Basilicum** annual shrub that presents a **decorative** perfectly in the stripe group. It's greyish purple bottle brush like spine flower matches the jacarandas flower look also the evergreen leaves of ocimum fits those of jacaranda the most. In the second layer comes the **Duranta Erecta** acts as a perennial **decorative** shrub that is creates the **elegance** the grouping needs due to its evergreen leaves color and the texture of the leaves fits the grouping the most. **Ostiospermum Fruiticosum** is in the third layer to make the best **pretties** in this grouping. It's color make a **harmony** with the jacarandas flowers color and also its leaves to collect up the stripe grouping any Mediterranean garden.

References:

- (1) <https://www.mashtalegypt.com/product/jacaranda/>
 (2) A PLANT GUIDEBOOK FOR AL-AZHAR PARK AND CITY OF CAIRO page 132

Key Words

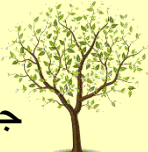
Mood

Layers Technique

Layers

Jatropha Integerrima

جatroفا حمراء



Trees

Species	Price ⁽¹⁾	Height	Width	Water	Sun
integerrima	220 EGP	Up to 6m	Up to 4m	40-50Liter/day	Full Sun
Genus		Roots	Flowers		Soil
Jatropha		0.4-0.6m	star-shaped, bright coral-red		well-drained
Blooming ⁽²⁾			Form ⁽²⁾		
May-June-July-August			Semi-evergreen, deciduous with an erect branching pattern		
Fruit		Leaves			
Incorispicuous		sharp-pointed, dark green, red when young and green when old			



Madinaty



Madinaty



Madinaty

Garden Type:

Mediterranean Gardens, Due to it's summer colors that makes it eye-catchy and energetic, apparently it's formal form make it decent for Mediterranean.

Keywords:

Focal Point
Attractive
Decent



Madinaty



Acalypha Madinaty



Asparagus Densiflorus Madinaty

Grouping: The whole group mood: (Attractive – Elegance – Welcoming)

With jatropha integerrima's short slim stem, dense obovate glossy, coarse green leaves and coral red flowers, this tree is very noticeable which make it a **focal point**. The color contrast of leaves and flowers gives it an **decent** setting. The coral red colored flower attracts the viewer eye which makes the grouping very important to make the **special** jatropha integerrima more attractive. So, in this grouping we are going to add in the First Layer **Ficus Nitida** the skeleton tree. Due to it's dense and evergreen leaves color it's made to be the perfect background to make the jatropha more **attracted** and to show it more we have added in the Second Layer **Acalypha** which has a rough textured leaves which has the same obovate shape as the jatropha's but acalypha has coppery brown leaves color. It is a **pretties** shrub in the group giving the **elegance** shape. For the Third Layer **Asparagus Densiflorus**, a Perennial **Decorative** shrub which has a semi-transparency look by it's evergreen bottle brush-like form which make a great contrast with the coppery brown color of the acalypha and the ever green color in the background that makes it more **attractive** to the passer's eyes and the moves happen when the air blows make it more **welcoming**. This grouping is stripe one.

References:

- (1) <https://www.mashtalegypt.com/product/jatropha/>
 (2) A PLANT GUIDEBOOK FOR AL-AZHAR PARK AND CITY OF CAIRO page 133

Key Words

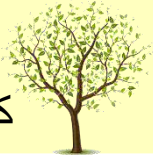
Mood

Layers Technique

Layers

Koelreuteria Elegans

كولرتاريا صفراء



Trees

Species	Price ⁽¹⁾	Height	Width	Water	Sun
paniculata	1200EGP	10-15m	Up to10m	40-50Liter/day	Full-Sun
Genus		Roots	Flowers		Soil
Koelreuteria			Panicles, small. yellow-orange		Well-drained
Blooming ⁽²⁾			Form ⁽²⁾		
5-6-7-8-9			Deciduous, spreading, round-headed tree		
Fruit		Leaves			
Thick, copper-brown		Pinnate leaves with irregular edge Composed of 18 ovate leaflets			



Madinaty



Madinaty



Madinaty

Garden Type:

Mediterranean garden for its colorful, passionate, warm, cheerful flowers and the shade and shadow it makes on itself and it makes a great landmark by its passionate colors that fits the most.

Keywords:

Landmark
Calmness
Elegant



Bougainvillea El-Azhar Park



Durranta Erecta El-Azhar Park



Koelreuteria Elegans Madinaty

Grouping: The whole group mood: (Impressive – Attractive)

The distinctive **landmark** tree of Koelreuteria Elegans makes a great effect in any zone it is in. Its appearance are all made by its petal flower that all make a big one group of pink spots that fill the whole tree giving it a great **calmness** effect by its pink flowers that are having haranksh shape which make it more unique. Its dark green leaves make a great contrast and it make the pink flowers more attractive and showy and helps the spreadness of them to appear more **elegant** when its used in landscaping any street. Its **skeleton** shape in any grouping make it appear more beautiful with **bougainvalie** in the first layer as a **decorative** shrub due to it fits so much the tree's flower in shape and the darker color to make a great contrast improves the **attractive** effect the grouping gives also by its smooth small but bushy evergreen leaves it has. also the second layer acts as a **decorative** element the perennial shrub **durranta erecta** that has a great bright yellowish green serrated leaves and shiny dazzling golden color it gives the **impressive** mood. Mediterranean and Foliage gardens are overwhelmed by this Stripe grouping.

References:

(1) Mashtal at el azhar park

(2) A PLANT GUIDEBOOK FOR AL-AZHAR PARK AND CITY OF CAIRO page 136

Key Words

Mood

Layers Technique

Layers



El-Azhar Park



El-Azhar Park

Parkinsonia

باركنسونيا



Trees

Species	Price ⁽¹⁾	Height	Width	Water	Sun
aculeata	1455 EGP	8-10m	5-8m	60-80Liter/day	Full sun
Genus		Roots	Flowers		Soil
Parkinsonia		40-60 cm	cup-shaped fragrant yellow		Well-drained
Blooming ⁽²⁾			Form ⁽²⁾		
April-May-June			Spreading evergreen bearing spiny green stems and branchlets		
Fruit		Leaves			
fibrous-like cotton or silk		Compound, palmate, 5 - 7 cm long leaflets			



El-Azhar Park

Garden Type:

Mediterranean Gardens, Due to it's different green shading which make it a transparent plant with thin tall leaves that makes it eye-catchy and energetic and also decent plant in Mediterranean

Keywords:

Informality
Delicate
Warm



Parkinsonia Madinaty



Asparagus Densiflorus Madinaty



Euyropus Acaurus Madinaty

Grouping: The whole group mood: (Welcoming – Motivational)

The amazing unique Parkinsonia that has special characteristics makes any garden so brilliant by it's very thin light long moving leaves creates a bushy transparent plant that gives the relaxing and **informality** mood to any passer. It could be very attractive in the desert nature due to its stems. It's very distinctive in or out of bloom with its bright green foliage. also it's bright green yellow flower add a sense of **warmth**. A neutral tree with a **delicacy** form making it the **special** part in a group of **Asparagus Densiflorus** in the first layer, a perennial **decorative** shrub which has a semi-transparency look that fits the parkinsonian look in the desert like space as it has an evergreen bottle brush-like leaves form which make it more attractive to the passer's eyes because of the moves happen when the air blows make the grouping more **welcoming** mood. By adding the **Euyrops Acaurus** in the second layer as a perennial shrub acting like a **decorative** element ending this cluster grouping by the amazing **motivational** mood by its yellow flowers and the evergreen unique leaves that has thin branched layers which matches those of parkinsonian and asparagus ones in this desert like grouping.

References:

- (1) <https://www.mashtalegypt.com/product/jerusalem-thorn/>
 (2) A PLANT GUIDEBOOK FOR AL-AZHAR PARK AND CITY OF CAIRO page 152

Key Words

Mood

Layers Technique

Layers



Madinaty



Madinaty

Pinus Roxburghii

الصنوبر الحلبي



Trees

Species	Price ⁽¹⁾	Height	Width	Water	Sun
Pinus	950EGP	15-20m	4-6m	15-20Liter/day	Full Sun
Genus		Roots	Flowers		Soil
Halpensis		0.5-0.7m	Insignificant small, yellow		Well-drained
Blooming ⁽²⁾			Form ⁽²⁾		
June-July			Small to medium-size, evergreen tree, pyramidal when young		
Fruit		Leaves			
Long, conical, red		Short needles. distinctly yellowish- green and produced in pairs			



Madinaty

Garden Type:

Mediterranean Gardens have the gloomy tree of pinus roxburghi due to it's bold texture it's leaves and trunk have.

Keywords:

Dramatic
Charismatic
Gloomy
Sensation



Acalypha Madinaty



Pennisetum El-Azhar Park



Roxburghi Madinaty

Grouping: The whole group mood: (Wild – Harmony)

Pinus Roxburghii the **dramatic** gloomy tree that could be standing alone due to its **charismatic** conical shape it makes by it's branched rough strong trunk It has. It's unique easily to be distinguished Needle-like, Light Green, thin leaves that looks like hair just bloomed from the branches. this unique and catchy tree has no flowers that bloom but only fruits with the hard shell shapes. It also has a waxy layer that shines in the sun which makes it visible in the morning but when grows old it gets **gloomier** and dramatic. It's light weighted leaves make it moves when the wind blooms which make a **sensational** effect to the viewers. It could be added as a **special** to a grouping of the **decorative** perennial grass **Pennisetum Purpureum** has a vertical shape that gives **wild** atmosphere by it's movement during any wind, also its feathery flower that fits the tall and thin leaves of roxburghi to give the feeling of **harmony** and homogeneous. The interlacing **acalypha** in the first layer presenting a **pretties** shrub which has a rough textured leaves of coppery brown color and tooth-like shape that makes a great highlighting to this beautiful group and also giving the desert mood that matches in any African gardens or forests.

References:

- (1) El-yasmine Mashtal
- (2) A PLANT GUIDEBOOK FOR AL-AZHAR PARK AND CITY OF CAIRO page 154

Key Words

Mood

Layers Technique

Layers

Poinciana Regia

بوانسيانا



Trees

Species	Price ⁽¹⁾	Height	Width	Water	Sun
Regia	810 EGP	10-12m	6-8m	30-70Liter/day	Full Sun
Genus		Roots	Flowers		Soil
Delonix		0.5-0.7m	pale yellow striped with red		well-drained
Blooming ⁽²⁾			Form ⁽²⁾		
4-5-6-7-8			Fully deciduous, has a wide-spreading dome-shaped crown		
Fruit		Leaves			
green pods, brown to black		bright green leaves, 10 - 25 pairs of oblong leaflets			



Madinaty



Poinciana Regia Madinaty



Cupressus Macrocarpa Madinaty



Euyropus Acaurus Madinaty

Grouping: The whole group mood: (Vibrant – Motivational)

Poinciana Regia is one of the most beautiful flowering tree in the world. It's the most known and commonly used tree in Egyptian streets. The tree is growing horizontally which makes a typical T shape that will allow to be used as a street trees due to it's wide shadow made on the streets. The oblong evergreen leaves have a feathery look as they are double pinnate having smooth texture which gives **energetic** mood. It's flower is solitary shaped that are falling all over the streets making a warmly **attractive** view to the passers from the street. It's a regular rough trunk that is so strong to carry all this horizontal tree that makes a pretty effect on nay place it is in it. It could be acting as a **special** in any grouping specially this one of **Cupressus Macrocarpa** the **decorative** shrub that acts as skeleton by making the evergreen background by it's dense and overlapped leaves to the **vibrant** colors coming in the grouping which gives the bold feeling that matches that of Poinciana regia. Also the **Euyrops Acaurus** in the second layer as a perennial shrub acting like a **decorative** element ending this cluster grouping by the amazing **motivational** mood by its yellow flowers and the evergreen unique leaves that has thin branched layers which matches those of Poinciana regia and cupressus macrocarpa ones in this stripe street fitting group.

Garden Type:

Mediterranean Gardens, Due to it's Horizontal growth that makes a wide shadow in the streets, and also for its passionate red colored flowers with the bold texture it makes.

Keywords:

Energetic
Attractive



Madinaty



Madinaty

References:

- (1) <https://www.mashtalegypt.com/product/royal-poinciana/>
 (2) A PLANT GUIDEBOOK FOR AL-AZHAR PARK AND CITY OF CAIRO page 105

Key Words

Mood

Layers Technique

Layers



Madinaty

Spathodea Campanulata

اسباثوديا



Trees

Species	Price ⁽¹⁾	Height	Width	Water	Sun
campanulata	980 EGP	10-15m	5-10m	50-60Liter/day	Full Sun
Genus		Roots	Flowers		Soil
Spathodea		0.5-0.7m	asymmetrical, bell-shaped, yellow		Fertile, moist
Blooming ⁽¹⁾			Form ⁽²⁾		
6-7-8-9-10-11			Deciduous moderately-branched, open, leafy tree		
Fruit		Leaves			
Large, woody		Opposite pinnate leaves, leathery, deep green leaflets			



Tecoma Stans El-Shorouk



Spathodea Madinaty



Clerodendrum Splendens Madinaty

Grouping: The whole group mood: (Nobility – Vibrant – Passionate)

Spathodea Campanulata is an African tulip tree that is large, charismatic, fast growing evergreen tree, which is all over the Egyptian streets falling it's very beautiful red flower petals all over the streets making a very elegant and warm view. This special tree is having an oval to round, coarse canopy. It has red flowers that are **showy**, and attractive to anyone passing by. It also has an evergreen ovate rough leaves that gives a very **powerful** effect. It could be acting as a landmark and could be grouped with no other plant due to it's **charismatic** view. It also could be acting as a special in a group of **Tecoma stans** in the first layer beside it making a great cluster but it's acting as a **decorative** element tecoma stans's bell-shaped yellow flower which has soft or smoot textured petals always a good idea to be placed beside spathodea due to the **vibrant** it gives and the **passionate** view. As well as the **clerodendrum splendens** which acts as a **pretties** shrub under the two tree layers making a beautiful stripe grouping. The splendens flower is fitting those of the campanulata because of its cluster shape and the reddish purple color it has which gives **nobility** to the grouping. Also the leaves are wide evergreen rough ones that fits the grouping the most.



Madinaty



Madinaty

Garden Type:

Mediterranean for its red flowers colored that gives the very vibrant effect in the atmosphere. Also Due to it's unique leaves that gives a bold noticeable texture.

Keywords:

Showy
Power
Charismatic

References:

(10 <https://www.mashtalegypt.com/product/african-tulip-tree/>)

(2) A PLANT GUIDEBOOK FOR AL-AZHAR PARK AND CITY OF CAIRO page 170

Key Words

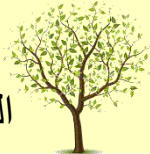
Mood

Layers Technique

Layers

Taxodium Distichum

الطقسود الأقرع



Trees

Species	Price ⁽¹⁾	Height	Width	Water	Sun
Distichum	1050EGP	20-30m	2-5m	60-80Liter/day	Full Sun
Genus		Roots	Flowers		Soil
Taxodium		0.7-0.9m	Monoecious, conical, yellow-red		Well-drained
Blooming ⁽²⁾			Form ⁽²⁾		
April			Deciduous, pyramidal to conical, spreading, irregular, flat-topped		
Fruit		Leaves			
Globe-shaped cones		Spirally-arranged deciduous stems hold needles in 2 ranks			



Madinaty



Taxodium Madinaty



Amaranthus Madinaty



Senecio Cineraria Madinaty

Grouping: The whole group mood: (Attractive – Glorious – Noticeable)

The Taxodium Distichum tree that has a pyramidal shape acting as a mature tree. The leaves are linear in shape turns yellowish brown in the fall, it has a sad effect made by it's weeping shape making the **gloomy** view it has. The cones are decorative green at the beginning than turn into brown. It can adopt to many conditions such as urban or dry sites which make it a flexible **adaptive** plant. Its dense form and massiveness makes it a dominantly attractive **landmark** tree. It acts as a **special** in a grouping of the annual **pretties** shrub **Amaranthus** that makes a great contrast during it's brownish purple leaves with the green ones in Taxodium and also the contrast is admitted more by the scale of the leaves as it's huge soft textured leaves in amaranthus that gives the grouping more **noticeable** appearance. While, The Second Layer would be **Senecio Cineraria**, Also a perennial shrub that will also act as **pretties** in this grouping and has a greyish color which admits the contrast form to make the grouping more **glorious**. Also, the hairy texture of it's leaves are making the **attraction** more existing. This Cluster grouping would be a very good choice for a Mediterranean garden.



Madinaty



Madinaty

Garden Type:

It fits in Modern Gardens due to its executive look and its need for low maintenance and for also the high quality finish in looks by it's weeping pyramidal shape.

Keywords:

Gloomy
Adaptive
Landmark

References: ⁽¹⁾ <https://www.mashtalegypt.com/product/italian-cypress/>

⁽²⁾ A PLANT GUIDEBOOK FOR AL-AZHAR PARK AND CITY OF CAIRO page 177

Key Words

Mood

Layers Technique

Layers



Tecoma Castanifolia

تيكومة واقفة



Trees

Species	Price(1)	Height	Width	Water	Sun
castanifolia	250EGP	6-9m	3-5m	40-50Liter/day	Full-Sun
Genus		Roots	Flowers		Soil
teca		0.4-0.6m	Golden yellow, trumpet shaped		Well-drained
Blooming(1)			Form(2)		
June-July-August			Dense ,evergreen tree has clustered flower at every branch-end.		
Fruit		Leaves			
dry pods		lance shaped , green ,opposite pinnately compound, smooth			



Bougainvillea El-Azhar Park



Ocimum Basilicum Madinaty



Tradescantia Madinaty

Grouping: The whole group mood: (Nobility – Dynamic – Harmony)

Tecoma Castanifolia may be seemed as it's family of tecoma stans and cassia galuca but the truth is it's the showiest one of them. They all have the same bell-shaped yellow vibrant flowers but the tecoma castanifolia are the most special one as it's known from the first sight due to it's flowers are blooming only at the end of every branch it has which make it so unique and **noticeable** from any other tree around having the same leaves and flower. It's shape and form gives the dynamic mood to those spectators as it makes the branches very **showy** and noticed. It's leaves are evergreen having the ovate shape. It makes a great **special** tree in a grouping of **Bougainvillea** as a climber shrub besides it making a great **skeleton** background by it's evergreen ovate shaped leaves and the bushy soft purple and pink flowers which have a tiny white flowers inside that make the grouping very **attractive** from afar. Also the **Ocimum Basilicum** in the second layer making an annual shrub that presents a **decorative** perfectly in the stripe group. It's greyish purple bottle brush like spine flower matches the branches of the tecoma castanifolia that has a cluster of flowers in every branch end. It also has evergreen ovate leaves that fits those of tecoma castanifolia the most giving the **nobility** mood. In the third layer the amazing **Tradescantia** the **decorative** shrub that has pointed linear vertical leaves which creates the **harmonic** mood to the group also by it's leaves color that combines between green and brown colors which gives also the power effect due to it's degradation and being as the ending layer the amazing climbing shrub, vibrant tree, and the annual shrub that their stripe group making an amazing **dynamic** mood.



Madinaty



Madinaty

Garden Type:

Mediterranean Gardens are filled with tecoma castanifolia due to the vibrant color it's cluster flowers have which any mediteranean gardens needs and also for the shadow it makes.

Keywords:

Noticeable
Showy

References: (1) <https://www.mashtalegypt.com/product/yellow-elder/>
(2) <http://www.rareflora.com/tecomacas.html>

Key Words

Mood

Layers Technique

Layers



El-Shorouk

Tecoma Stans

تيكوما صفرا



Trees

Species	Price ⁽¹⁾	Height	Width	Water	Sun
Stans	250 EGP	6-9m	3-5m	40-50Liter/day	Full Sun
Genus		Roots	Flowers		Soil
Ticoma		0.4-0.6m	Yellow Bell-Shaped Flower		Well-drained
Blooming ⁽²⁾			Form ⁽²⁾		
June-July-August			Branched Dense Green Small Tree or Large Shrub Form		
Fruit		Leaves			
Dry-pods		Green, Opposite, Clustered Sharply- Pointed oval Leaflets Leaves			



El-Shorouk



El-Shorouk

Garden Type:

Mediterranean Gardens, Due to it's green shading which make it a showy plant with bell shaped flowers that makes it eye-catching and energetic by it's red color needed in Mediterranean

Keywords:

Wild
Showy
Passionate



Tecoma Stans El-Shorouk



Durranta Erecta El-Azhar Park



Hibiscus Madiant

Grouping: The whole group mood: (Attractive – Romantic – Elegance)

Tecoma stans is an amazing semi-evergreen shrub or small tree. It creates the perfect **showy** shape by its bright green opposite ovate shaped leaves, which are pinnately compound and the leaflet has a sharply toothed edges that makes a great **wild** mood. The sunshine yellow flowers are trumpet shaped or bell-shaped that makes the **passionate** mood by it's yellowish color. They hang in showy clusters at the branch tips and are distributed among the tree making a very beautiful yellow spots in an evergreen background. It acts as a **special** tree in a grouping having a **romantic** mood brought by the red bell-shaped flower that fits that of tecoma stans with the great **hibiscus** shrub that is in the first layer acting as a **decorative** element. It also has the same sharply toothed edge ovate shaped evergreen leaves that has a rough texture fitting with those of the tree. for the **durranta erecta** that is in the second layer ending that stripe grouping by it's perennial **decorative** shrub that creates the **elegance** made by the grouping due to its evergreen leaves color and the texture of the leaves fits the grouping the most. The durranta erecta giving a great contrast admitting the **attractive** mode this stripe grouping gives.

References:

(1) <https://www.mashtalegypt.com/product/yellow-elder/>

(2) A PLANT GUIDEBOOK FOR AL-AZHAR PARK AND CITY OF CAIRO page 178

Key Words

Mood

Layers Technique

Layers

Acalypha

أكاليفا



Shrubs

Species	Price(1)	Height	Width	Water	Sun
wilkesiana	500 EGP	2-3m	1.5-2m	10-20Liter/day	Full sun
Genus(2)		Roots	Flowers(2)		Soil
Acalypha		0.3-0.5m	Dark green, red catkin-like		Well-drained
Blooming			Form(2)		
July-August			Evergreen, spreading shrub with multi- colored, variegated		
Fruit		Leaves			
Small brown seeds		Oval, rich coppery-brown, up to 25 cm. in length			



Madinaty



Madinaty



Madinaty

Garden Type:

Mediterranean Gardens, Due to it's Spontaneous sizes that make shade and shadow on itself, apparently Contrast color and bold huge scale of leaves which gives bold texture.

Keywords:

Strong
Contrast
Distinctive



Acalypha Madinaty



Asparagus Densiflorus Madinaty



Senecio Cineraria Madinaty

Grouping: The whole group mood: (Welcoming – Attractive – Glorious)

Acalypha is one of the blazing shrubs that attracts any eye from long distance apart due to it's coppery brown color that makes a **contrast** effect in any garden. It's oval, serrated and toothed form make it's **distinctive** and unique look in the garden. Also, It's rough texture plays a big role in making it **strong**. It is an ideal along walkways, fences, and borders. In the grouping, Acalypha is always going to act as the **Pretties** shrub that catches the eyes. **Decorative** for the First Layer **Asparagus Densiflorus**, a Perennial shrub which has a semi-transparency look by it's evergreen bottle brush-like form which make a great contrast with the coppery brown color of the acalypha that makes it more **attractive** to the passer's eyes and the moves happen when the air blows make it more **welcoming**. While, The Second Layer would be **Senecio Cineraria**, Also a perennial shrub that will also act as **pretties** in this grouping and has a greyish color which admits the contrast form to make the grouping more **glorious**. Also, the hairy texture of it's leaves are making the attraction more existing. This Cluster grouping would be a very good choice for a Mediterranean garden.

References:

- (1) Mashtal at el-azhar park
(2) A PLANT GUIDEBOOK FOR AL-AZHAR PARK AND CITY OF CAIRO page 188

Key Words

Mood

Layers Technique

Layers

Amaranthus Tricolor

أمرنثاس قطيفة



Shrubs

Species	Price ⁽¹⁾	Height	Width	Water	Sun
A.tricolor	120EGP	0.6-0.9m	1-2m	15-20Liter/day	Full Sun
Genus ⁽²⁾		Roots	Flowers ⁽²⁾		Soil
Amaranthus		0.3-0.5m	small scented white-purple		well-drained
Blooming			Form ⁽²⁾		
All the year			Evergreen flowering shrub, woody stemmed perennials.		
Fruit		Leaves			
Red berries		Simple rosette, leathery, entire linear, deep green, purple			



Madinaty



MIU Campus



MIU Campus

Garden Type:

Mediterranean Gardens, Due to it's Spontaneous sizes that make shade and shadow on itself, apparently Contrast color and bold huge scale of leaves which gives bold texture.

Keywords:

Adaptable
Contrast
Attractive



Arecia Madinaty



Amaranthus Madinaty



Tradescantia Madinaty

Grouping: The whole group mood: (Protective – Harmony – Power)

The so **adaptable** annual shrub, amarnthus tricolor that has so **attractive** dark brownish purple dense leaves that makes a great **contrast** in any grouping aiming for the royalty or even the attraction from any passerby to this beautiful combination it made by it's also oval shaped linear vertical growing leave. It's leaves are grown as thrones by it's smooth pointed oval shape so It could be added as **decorative** element after the **skeleton** one of **chrysalidocarpus lutescens** as the background to make a great privacy and **protective** effect due to it's dense this grouping make. The amarnthus tricolor shrub fits perfectly this annual shrub as they both have the pointed vertical leaves that gives sharpness to the grouping. Also it's bambboo like trunk that makes a great privacy due to it's dense.in the second layer comes the amazing **Tradescantia** the **decorative** shrub that also has the same pointed linear vertical leaves which creates the **harmonic** mood to the group also by it's leaves color that combines between green and brown colors which gives also the **power** effect due to it's degradation and being in a cluster interlacing grouping.

References:

- (1) Mashtal at el-azhar park
- (2) A PLANT GUIDEBOOK FOR AL-AZHAR PARK AND CITY OF CAIRO page 188

Key Words

Mood

Layers Technique

Layers



El-Azhar Park



El-Azhar Park

Bougainvillea

الجهنمية



Shrubs

Species	Price ⁽¹⁾	Height	Width	Water	Sun
B. Glabra	400 EGP	4-5m	Infinite	25-30Liter/day	Full sun
Genus		Roots	Flowers		Soil
Bougainvillea		30-50 cm	Small tubular 3pink Cluster		Moist Loam, Sand
Blooming ⁽²⁾			Form ⁽²⁾		
May-June-July-August			Climber Shrub with spiny branches with strong cascading evergreen form		
Fruit		Leaves			
Narrow five-lobbed achene		Elliptic evergreen, Semi-Glossy Leaves of 13cm long			



Google

Garden Type:

Bougainvillea can be used in The Mediterranean Gardens, because of its strong floral expression and passionate colors variety that makes contrast and boldness in form and texture.

Keywords:

Passionate
Dazzling
Vivid
Tropical



Washingtonia Filifera Madinaty



Cupressus Macrocarpa Madinaty



Durranta Erecta El-Azhar Park

Grouping: The whole group mood: (Impressive – Welcoming – Active – Sophisticated)

Bougainvillea is a climber dominant shrub. Any passer is surely going to be highly attracted to the upwards cascading **passionate** shrub due to its tubular purple flowers with it's spread of the three white flowers in the center that makes him Impressive. The smooth texture of its leaves also making it **vivid** as it's so easy to be moved when wind blooms. Bougainvillea is usually used as a **decorative** shrub as it's coloring material lights up the grouping and it's cheap and eye-catching. **Special** would be the First Layer **Washingtonia Filifera** which has a dark green fan-like leaves which gives a great contrast in color that **welcomes** the users. The rough texture of it's trunk and leaves makes a contrast with the soft texture of bougainvillea which makes the grouping more tropical. In order to make the grouping more **Tropical**, Second Layer **Cupressus Macrocarpa**, The **special** shrub could be added to make the grouping more **sophisticated** by its teddy bear form of messy hairy light green leaves all around the shrub, giving the space an **active** mood. The Third Layer would be the **decorative** perennial **Durranta Erecta** through its bright yellowish green serrated leaves and shiny **dazzling** golden color it gives the **impressive** mood. Mediterranean and Foliage gardens are overwhelmed by this Stripe grouping.

References:

- (1) <https://www.mashtalegypt.com/product/bougainvillea/>
 (2) A PLANT GUIDEBOOK FOR AL-AZHAR PARK AND CITY OF CAIRO page 291

Key Words

Mood

Layers Technique

Layers

Callistemon Citrinus

فرشة الزجاج الليموني



Shrubs



Madinaty



Madinaty

Species	Price ⁽¹⁾	Height	Width	Water	Sun
Citrinus	320EGP	3-5m	1.5-3m	30-40Liter/day	Full sun
Genus		Roots	Flowers		Soil
Callistemon		0.5-0.7m	Crimson-red flowers in spikes		Well-drained
Blooming ⁽²⁾			Form ⁽²⁾		
April			Evergreen, large shrub		
Fruit		Leaves			
Small brown capsules		narrow, lance shaped, and leathery, with a distinctly citrus aroma			



Madinaty

Garden Type:

Mediterranean garden due to its passionate tender and vibrant colors of it's bottle brushed-shape flower. The contrast by the dark green an bright red flower color.

Keywords:

Attractive
Energetic



Callistemon Madinaty



Pennisetum El-Azhar Park



Russelia Google

Grouping: The whole group mood: (Elegant – Festivity – Refreshment)

Callistemon Citrinus is a very identified unique shrub that is an eye-catching shrub by it's deep red flower spikes, which look like bottle brushes. Those **attractive** flowers provide the garden with an **energetic** mood due to its bright vibrant red colored flowers that makes a great contrast with its lance shaped thin smooth dark green leaves. This bottle brushed warm colored flowers are not in any other shrub or tree and that's grabbing the passer's eyes. Therefore, it is grown at the base of the walls or in shrub borders. It is highly suitable for arid desert environments as it survives in high temperature and high humidity. It acts as a **special** in any grouping and for this **elegant** group planted in clusters in gardens and in courts with interlacing yet stripe group of Pennisetum Purpureum and russelia as the **decorative** perennial grass Pennisetum Purpureum has a vertical shape that gives **refreshment** atmosphere by it's movement during any wind, also its feathery flower that fits the tall bottle brush flowers and the dark green leaves of Callistemon Citrinus palm tree to give the feeling of harmony and homogeneous. The interlacing **russelia** the perennial vertical **pretties** shrub that owes bright shining and fluffy red color that attracts any eye by the contrast made to give a mellowness and **festivity** atmosphere to the interlace grouping.

References:

- (1) El Yasmin Mashtal
- (2) A PLANT GUIDEBOOK FOR AL-AZHAR PARK AND CITY OF CAIRO page 83

Key Words

Mood

Layers Technique

Layers

Canna Indica

الكنا الخضراء



Shrubs

Species	Price ⁽¹⁾	Height	Width	Water	Sun
indica	310EGP	1.5-2m	0.5-0.7m	20-25Liter/day	Full Sun
Genus		Roots	Flowers		Soil
Canna		0.3-0.5m	Terminal clusters red flowers		Well-drained
Blooming ⁽²⁾			Form ⁽²⁾		
5-6-7			Robust, rhizomatous, herbaceous, perennials, with many cultivars.		
Fruit		Leaves			
Seeds		Striking dark green, bronze-tinted, ovate, lance-shaped			



Madinaty



Madinaty



Madinaty

Garden Type:

Mediterranean garden due to its passionate tender and vibrant colors of it's bird-shaped flower. The contrast by the bright green leaves and red or orange flower color.

Keywords:

Impressive
Warm
Passionate



Canna Indica Madinaty



Ficus Hawaii Madinaty



Roystonea Regia El-Azhar Park

Grouping: The whole group mood: (Harmony – Homogenous)

The perennial evergreen, colorful herbaceous plant, The **impressive** Canna Indica by it's aquatic plant like and its own special showy shape. It has a very unique bird-shape flowers that have an amazing fiery colors of reddish orange that make a very **warm** and dangerous effect on any passerby. Also its wide big leaves that has diversity of green color but mainly the light ones make it so special and make the mood is returned back to the neutral to **passionate** mood due to the contrast between the light green colors of leaves and the warm colors of the flower. This **decorative** perennial plant would be perfectly matched with the **Ficus Hawaii** in the first layer as it has the same light green leaves but in different scale as it's small and dense with also a soft glossy leaf texture. This ficus hawaii would act like the **skeleton** background part in the grouping which gives the **harmony** in colors in the stripe grouping. Then comes the **Roystonea Regia** in the background as well acting like the **special** element to completes the **homogenous** feeling this grouping makes to any passerby by it's bright colored trunk of white and the shades of green from the top ending with a big wide evergreen leaves that would attract any viewer.

References:

- (1) <https://www.mashtalegypt.com/product/green-canna-lily/>
 (2) A PLANT GUIDEBOOK FOR AL-AZHAR PARK AND CITY OF CAIRO page 408

Key Words

Mood

Layers Technique

Layers



Madinaty



Madinaty

Clerodendrum Splendens

كلييرا طربوش الملك



Shrubs

Species	Price ⁽¹⁾	Height	Width	Water	Sun
Bowry	260EGP	Up to 3m	Indefinite	20-25Liter/day	Full sun
Genus		Roots	Flowers		Soil
Clerodendrum		0.2-0.4m	bright scarlet, dense		Well drained
Blooming ⁽²⁾			Form ⁽²⁾		
May june july			Twining evergreen climber or shrub, with very showy, red flowers		
Fruit		Leaves			
Red berries in cluster		Opposite, ovate to elliptic, rich green			



Madinaty

Garden Type:

It fits so much in cottage gardens due to the dense colors their flowers made by its reddish purple color and for the dark evergreen leaves it has with high maintenance it needs.

Keywords:

Nobility
Delight



Clerodendrum Madinaty



Amaranthus Madinaty



Plumera Alba 3-Azhar Park

Grouping: The whole group mood: (Harmony – Dramatic)

Clerodendrum splendens makes a unique and great effect in any garden it is included in due to it's flowers are having the solitary or the salver form which means it is tuba shaped that having a slender tube with a suddenly expanded corolla. They are purple having the reddish effect and sometimes white, and grown in dense terminal clusters which creates the **nobility** effect to any passerby. Flowers are very showy in large terminal or cluster arraying during the year. Clerodendrum is a vigorous twiner with wide, large, dark green, leather textured leaves that makes the **delight** effect to any viewer. It is presenting the perfect climber shrub which acts as a **decorative** element in our grouping that includes the great large shrub that considered to be the **skeleton** part, **Plumera Alba** that have the same large dark green leather textures leaves which creates the **dramatic** mood anyone would be into it once to view the stripe grouping. Also, the reddish with white fan-shaped flowers are acting so in **harmony** with that of clerodendrum. In addition to the third layer of **Ammaranthus** that have the brownish purple wide large leaves to completes the dramatic mood the grouping gives by it's great warm effect. This perennial shrub acts as the **pretties** element in the grouping.

References:

- (1) El-Yasmine Mashtal
- (2) A PLANT GUIDEBOOK FOR AL-AZHAR PARK AND CITY OF CAIRO page 293

Key Words

Mood

Layers Technique

Layers



El-Azhar Park

Euphorbia milli

شوكة المسيح



Shrubs

Species	Price ⁽¹⁾	Height	Width	Water	Sun
mili var. Splendens	60 EGP	0.8-0.9m	0.4-0.6m	8-10Liter/day	Full sun
Genus		Roots	Flowers		Soil
Euphorbia		30-40cm	Small radiant red bracts pairs		Well-drained
Blooming ⁽²⁾			Form ⁽²⁾		
All the year			Evergreen scrambling semi-succulent shrub with thorny stems		
Fruit		Leaves			
Small white buos		Bright green 4 cm-long. sharp spines 1 cm-long wider at the base			



El-Azhar Park



El-Azhar Park

Garden Type:

Mediterranean garden due to its red paired flowers and the contrast between its soft texture and the spines also could be in Modern garden due to its rough spines and bold texture.

Keywords:

Wild
Energetic



Darcena Madinaty



Cycas Madinaty



Wedalia El-Azhar Park

Grouping: The whole group mood: (Dramatic – Tropical – Gloomy)

Euphorbia milli is a groundcover shrub that has a unique flowers, leaves and branches. It's flowers are grown in pairs and has the horizontal planed shape with two red leaves that gives the **energetic** effect, connected by spine branches which makes the shrub more **wild**. It's smooth evergreen dense leaves makes the wildness a bit neutralized as it has an oval big shape that covers all the spines in the branches. This **decorative** shrub could be added to a tropical grouping that fits its wildness. In the first layer we would add the **Darcena** palm that has linear, glossy, leathery, messy leaves that make a **tropical** effect in the background. It's trunk is branched to many ones but all are clustered in one shape which make it as a **skeleton** palm. For the second layer **Cycas** comes acting like **special** in this grouping. It's trunk add the wildness to the group as it's also a hairy spine trunk that ends up with waxy dark green lanceolate leaves. This adds a **dramatic** mood to any passer by the group. By adding a little warmness, and bright colors of the **Wedalia** perennial floor covering in the third layer as a **decorative** element in the group. It's yellow color gives a bright, warm yet wild effect as it also has a spine branches that makes it more dangerous and **gloomy** for users to come closer to this stripe grouping.

References:

- (1) Mashtal at el-Azhar Park
- (2) A PLANT GUIDEBOOK FOR AL-AZHAR PARK AND CITY OF CAIRO page 372

Key Words

Mood

Layers Technique

Layers

Euyropus Acareus

اريوبيس اصفر



Shrubs

Species	Price ⁽¹⁾	Height	Width	Water	Sun
Pectinatus	120EGP	to1.5m	Up to 1m	2-3Liters/day	Full Sun
Genus ⁽²⁾		Roots	Flowers ⁽²⁾	Soil	
Euyropus		0.3-0.4m	Bright yellow daisy-like	Well drained	
Blooming			Form ⁽²⁾		
5-6-7-8-9			Large shrubby evergreen perennials		
Fruit		Leaves			
Seeds		distinct gray-green or green feathery leaves, long toothed			



Madinaty



Madinaty



Madinaty

Garden Type:

Mediterranean Gardens, Due to it's passionate color made by it's yellow flowers and for also the bold texture its leaves make by it's unique pinnately lobed shape.

Keywords:

Showy
Cheerful



Darcena Madinaty



Cupressus Macrocarpa Madinaty



Acalypha Madinaty

Grouping: The whole group mood: (Tropical – Active – Impressive)

Euyropus Acareus is very eye-catching and **cheerful** for any viewer because of its bright yellow flowers of African bush daisy which are produced in great number covering all the shrub. The loose, rounded form it has, makes a colorful tall ground cover, small shrub, or works well in mixed flower borders. The finely-divided pinnately lobed evergreen leaves have a lacy, fern-like appearance makes a great **showy** mood. and it's a perennial shrub acting like a **decorative** element in a group of first layer we would add the **Darcena** palm that has linear, glossy, leathery, messy leaves that make a **tropical** effect needed in the background. It's trunk is branched to many ones but all are clustered in one shape which make it as a **skeleton** palm. adding **Cupressus Macrocarpa** clustering In order to make the grouping more Tropical, Second Layer. The **special** shrub could be added to make the grouping more sophisticated by its teddy bear form of messy hairy light green pinnately lobed leaves all around the shrub, giving the space an **active** mood. The Third Layer would be the **decorative** shrub **Acalypha** through its coppery brown colored wide large rough textured leaves it gives the **impressive** mood made by the great contrast in shape and color. Mediterranean and Foliage gardens are overwhelmed by this cluster yet Stripe grouping.

References:

- <https://nabatdelivery.com/product/euyrops/>
- A PLANT GUIDEBOOK FOR AL-AZHAR PARK AND CITY OF CAIRO page 232

Key Words

Mood


Layers Technique

Layers



Madinaty

Gazania

جازانيا  Shrubs

Species	Price(1)	Height	Width	Water	Sun
specles	250EGP	0.3-0.4m	0.6-0.8m	8-10Liter/day	Full sun
Genus		Roots	Flowers		Soil
Gazania		0.2-0.3m	Large, white, yellow, orange		Well-drained
Blooming(2)			Form(2)		
1-2-3-4-12			Evergreen weeping ground cover		
Fruit		Leaves			
No Fruit		Simple, linear-lanceolate, dense, white, tomentose underneath			



Madinaty



Madinaty

Garden Type:

Mediterranean garden for its colorful, passionate, warm, cheerful flowers and the shade and shadow it makes on itself and Modern garden due to its low maintenance and low care.

Keywords:

Dominance
Energetic
Glorious



Rhipis Excelsa Google



Tradescantia Madinaty



Gazania Chansonette Madinaty

Grouping: The whole group mood: (Power – Wild – Harmony)

Brilliant, Energetic perennial shrub the Gazania Chansonette. The ground cover that's always opens towards the sun as its bright color will shine more and add more **glorious** effect. The degradations of color it has from the darker yellow in the center to the brighter one along the leaves gives it the **dominance** and **energetic** mood and grabs the attention. It has a simple oval green leaves making a great contrast with it's flower that grabs the passers attention. A great focal point in any grouping so that it's planted in gardens borders due to the **power** it gives by covering large ground areas. The **decorative** shrub is added to a grouping of **Rhipis excelsa** as a **special** palm in the background making it more **wild** and richness due to it's linear green leaves which looks the same as those of gazania that makes a marvelous environment with the second layer of **Tradescantia** the **decorative** shrub that also has the same pointed linear vertical leaves which creates the **harmonic** mood to the group also by it's leaves color that combines between green and brown colors which gives also the power effect due to it's degradation and being as the transition mood between the palm and the perennial shrub of gazania chansonette.

Hibiscus

هيبسكس أحمر



Shrubs

Species	Price ⁽¹⁾	Height	Width	Water	Sun
Rosasinensis	220 EGP	3-4m	1.5-2m	25-30Liter/day	Full sun
Genus		Roots		Flowers	
Hibiscus		30-50cm		Single, bright red-orange	
Blooming ⁽²⁾			Form ⁽²⁾		
May-June-July-August			Evergreen rounded bushy shrub or small tree has showy red flowers		
Fruit		Leaves			
inconspicuous fruit		Leathery, ovate to heart-shaped, toothed, dark green 15cm leaves			



El-Azhar Park



El-Azhar Park



El-Azhar Park

Garden Type:

Mediterranean garden due to its passionate tender and vibrant colors of its cluster bell-shape flower. The contrast by the dark green and bright red or orange flower color.

Keywords:

Romance
Charismatic



Chorisia Chripflora Madinaty



Tecomaria El-Azhar Park



Hibiscus Madinaty

Grouping: The whole group mood: (Harmony – Sparkling – Protective)

Hibiscus is a commonly used shrub in Egypt as it's **charismatic** shrub due to its attractive bell-shaped pointed bright red flower with thin small details of stamens that grabs any passer eyes which make it easily distinguished giving an immediate effect of love and **romance** because of its striking red color. It makes a great contrast between its showy bright flowers and heart-shaped dark green leaves. Hibiscus acts like a **decorative** shrub in the grouping of **Chorisia Chripflora** as a **skeleton** tree in the first layer to be as a background having the same bell-shaped pointed flower but with pinkish flower that gives the **sparkling** mood that attracts passers eyes. It's spick trunk creates a **protecting** mood as this grouping could be placed to be like boundaries for a certain space to give it the privacy it needs. In the second layers come the amazing warm colored **decorative** shrub **Tecomaria Capensis**, it will perfectly match with the hibiscus and the chorisia chripflora as they all have the same flower shape but the tecomaria has the closed one of it. Also the flower colors make a great **harmony** that gives romantic, unity moods. Also, the leaves texture that is smooth and the overall shape tecomaria has fits so much those of hibiscus giving a pleasant mood.

References:

- (1) <https://www.mashtalegypt.com/product/hibiscus/>
 (2) A PLANT GUIDEBOOK FOR AL-AZHAR PARK AND CITY OF CAIRO page 279

Key Words

Mood

Layers Technique

Layers



El-Azhar Park



El-Azhar Park

Lantana Camara

لانتانا كامارا



Shrubs

Species	Price ⁽¹⁾	Height	Width	Water	Sun
Camara	355 EGP	0.6-1 m	Up to 2 m	15-20Liter/day	Full sun
Genus		Roots	Flowers		Soil
Lantana		30-40 cm	Brightly-colored clusters		Well-Drained
Blooming ⁽²⁾			Form ⁽²⁾		
All The Year			Evergreen, bushy ground cover Shrub with showy bright flowers		
Fruit		Leaves			
Small blueberry-like fruits		Textured serrate Dark green leaves			



El-Azhar Park

Garden Type:

Mediterranean garden due to its passionate tender and vibrant colors of it's cluster flower. The bold rough texture of it's leaves and the contrast of the dark green and a bright flower color.

Keywords:

Joy
Dazzling
Vibrant



Cupressus Macrocarpa Madinaty



Ixora chinensis Google



Durranta Erecta El-Azhar Park

Grouping: The whole group mood: (Energetic – Bold – Enthusiastic)

The perennial Lantana Camara shrub is the most known and used shrub in Egypt due to its warm, vibrant colors that adds **joy** in any garden. It has a cluster flower that contains many small flowers of different colors pink, yellow and orange or totally yellow or purely orange it collects up a high range of **vibrant** any shrub could have. The ever green rough oval shaped tooth-like leaf makes an **dazzling** mood in any garden lantana camara stands by. It would be the **decorative** element in any grouping. This grouping is going to have **Cupressus Macrocarpa** as the first layer that acts like the **skeleton** by making the evergreen background by its dense and overlapped leaves to the vibrant colors coming in the grouping which gives the **bold** feeling. In the second layer is the **decorative** shrub **Ixora chinensis** that has the warm red color which gives the **energetic** mood. Also the cluster shape of its flowers fits those of the lantana the most. It makes the grouping more balanced **enthusiastic** by adding the **Durranta erecta**, perennial **decorative** shrub that will fit the most due to its soft little bright green leaves that will add more vibrant and energetic feelings to this stripe grouping.

References:

- (1) <https://www.mashtalegypt.com/product/lantana/>
 (2) A PLANT GUIDEBOOK FOR AL-AZHAR PARK AND CITY OF CAIRO page 245

Key Words

Mood

Layers Technique

Layers

Nerium Oleander

دفلة



Shrubs



Madinaty

Species	Price ⁽¹⁾	Height	Width	Water	Sun
Oleander	62 EGP	3-5 m	1-3 m	8-10Literr/day	Full sun
Genus		Roots	Flowers		Soil
Nerium		0.3-0.5m	Bear cymes pink, red, white		Well-drained
Blooming ⁽²⁾			Form ⁽²⁾		
4-5-6-7			Evergreen, tall, bushy shrub or small tree		
Fruit		Leaves			
Long dry hard		Lance-shaped, deep green to greyish green colored leaves			



Chorisia Chripflora Madinaty



Dafla Madinaty



Hibiscus Madinaty

Grouping: The whole group mood: (Attractive – Romantic – Calmness)

The Nerium Oleander or the dafla is a very shy yet elegant and **decent** shrub because of its roses which are a light to moderate pink to light red and known for their fine fragrance and very smooth delicate texture of flower petals, the flower petals are also sometimes used directly to flavor food or to make tea and are considered safe for human consumption which make it a **friendly** shrub. The contrast the flower gives with the evergreen leaves and also by the rough texture it has make it having a decent look that grabs any passerby to look at it so long time. This attractive shrub acts as a **pretties** in a group of **chorisia chripflora** tree acts as a **skeleton** giving a **calmness** mood by it's pinkish bell-shaped flower that alleviating feelings of anger also the exposure to large amounts of pink that the mix of dafla flower and chorisia chripflora flower have, can give the calming effect on the nerves and create physical weakness in people which is also a common feeling in the **romantic** mood brought by the red bell-shaped flower of **hibiscus** shrub that is in the third layer acting as a **decorative** element with the **dafla** in the second layer protecting the sensitive, delicate dafla shrub from the spicks that the chrosia chripflora trunk has. The durranta erecta giving a great contrast admitting the **attractive** mode this stripe grouping gives.



Madinaty



Madinaty

Garden Type:

Mediterranean garden for its colorful, passionate, warm, cheerful flowers and the shade and shadow it makes on itself and Modern garden due to its low maintenance and low care.

Keywords:

Friendly
Decent

References: ⁽¹⁾ <https://www.mashtalegypt.com/product/rose-bush/>

⁽²⁾ A PLANT GUIDEBOOK FOR AL-AZHAR PARK AND CITY OF CAIRO page 253

Key Words

Mood

Layers Technique

Layers

Ocimum Basilicum

ريحان



Shrubs



Madinaty

Species	Price ⁽¹⁾	Height	Width	Water	Sun
Basilicum	38for pot	0.7-0.9m	Up to 0.3m	20-25Liter/day	Full sun
Genus		Roots	Flowers		Soil
Ocimum		0.2-0.4m	Small white, tubular, 2-lipped		Well-drained
Blooming ⁽²⁾			Form ⁽²⁾		
April			Evergreen, large shrub		
Fruit		Leaves			
No fruit		Oval, toothed, slightly hairy, bright green, deep purple			



Ocimum Basilicum Madinaty



Lantana Madinaty



Tradescantia Madinaty

Grouping: The whole group mood: (Nobility – Harmonic – Power)

The attractive unique perennial Ocimum Basilicum is the most used shrub in houses and outdoor corners. It is a very gorgeous groundcover and that's all because of it's longitudinal tube of bundling flowers of white and pale purple which creates the perfect **dramatic**. However, it is formal **uniform** having a very much of green leaves that gives the **protective** foliage mood that leads to its final specialty which is it's smell that acts as spreading perfume while mingling through wind. It has a medicinal usage that make it perfect in productive garden. It acts as the best **decorative** shrub between the **purple lantana** shrub in the first layer as a **decorative** element creating more of the royal and **nobility** feeling the color of the clustered flower gives. Also it's leaves are evergreen oval shaped having the perfect dense that matches the amazing shrub. the second layer of **Tradescantia** the **decorative** shrub that also has the same pointed linear vertical leaves which creates the **harmonic** mood to the group also by it's leaves color that combines between green and brown colors which gives also the **power** effect due to it's degradation and being in a cluster interlacing grouping with both ocimum basilicum and lantana.



Madinaty



Madinaty

Garden Type:

foliage and country gardens for the different leaves and sizes and the moves made by its light weight.

Keywords:

Dramatic
Protective
Uniform

References:

- (1) <https://www.mashtalegypt.com/product/basil/>
 (2) A PLANT GUIDEBOOK FOR AL-AZHAR PARK AND CITY OF CAIRO page 254

Key Words

Mood

Layers Technique

Layers



Madinaty



Madinaty

Pelargonium Zonal

جارونيا



Shrubs

Species	Price ⁽¹⁾	Height	Width	Water	Sun
Zonal	250EGP	0.6-0.8m	0.2-0.6m	10-15Liter/day	Full sun
Genus		Roots	Flowers		Soil
Pelargonium		0.2-0.4m	clusters, scarlet, purple, pink		Well-drained
Blooming ⁽²⁾			Form ⁽²⁾		
3-4-5-6-7-8			Erect, bushy, evergreen perennials; erect branching stems.		
Fruit		Leaves			
No fruit		Alternate, rounded light to deep green, centered colored spot			



Madinaty

Garden Type:

Mediterranean garden for its colorful, passionate, warm, cheerful flowers and the shade and shadow it makes on itself and Modern garden due to its low maintenance and low care.

Keywords:

Noticeable
Various
Eye-catchy



Darcena Madinaty



Durranta Erecta El-Azhar Park



Euyropus Acareus Madinaty

Grouping: The whole group mood: (Contrast – Energetic – Warm)

Pelargonium Zonal is a showy, fuzzy, annual shrub that has uniquely simple alternate leaves. The leaves are rounded to sometimes be lobed which make them very unique and **noticeable** to immediately be known. Some of them are scented and some are not, they have medium texture not rough and not smooth one which make them **variant** shrub. It's flowers are scented with large leaves making a cluster of flowers in brilliant red or other **eye-catchy** colors. Pelargonium Zonal always presents as **decorative** element in this cluster grouping of **Darcena** as the background first layer as it is a very unique palm that has linear, glossy, leathery, messy leaves that make a **warm** effect in the background. It's trunk is branched to many ones but all are clustered in one shape which make it as a **skeleton** palm. And then comes the **Durranta Erecta** the perennial shrub in the second layer to take the **decorative** role in this amazing grouping. Durranta erecta is matched by it's **contrast** making with it's bright green colored leaves that attracts people and make the pelargonium showier. While in the third layer comes the **Euyrops Acareus** ending this cluster grouping by the amazing **energetic** mood by its yellow flowers and the green unique leaves and it's a perennial shrub acting like a **decorative** element.

Pennisetum

بنسيتم ديل الفار الاحمر



Shrubs

Species	Price ⁽¹⁾	Height	Width	Water	Sun
purpureum	50 EGP	1-1.2m	1m	60-80Liter/day	Full sun
Genus		Roots	Flowers		Soil
pennisetum		30-40cm	Small radiant red bracts pairs		Well-drained

Blooming ⁽²⁾		Form ⁽²⁾
All the year		round-forming densely perennial grass, often grown as an annual

Fruit	Leaves
Small white buos	Bright green 4 cm-long. sharp spines 1 cm-long wider at the base



El-Azhar Park



Phoenix Dactylifera Madinaty



Pennisetum El-Azhar Park



Russelia Google

Grouping: The whole group mood: (Sensational – Energetic – Country)

The feathery vertical flowers that has the brown color palette, the perennial shrub *Pennisetum purpureum* which is the meaning of the **elegance** view any person would admit by. This decent look is made perfectly by its rough textures brown leaves that creates a great contrast with its creamy spikelet vertical flowers. It adds a **dynamic** mood due to its lightness that make it moves easily making a nice symphony when wind blooms. Therefore, it is an ornamental grass, useful for both fresh and dried arrangements. It will fit perfectly as a **decorative** element with the *russelia* shrub as a **pretties** that makes a great interlacing yet cluster shape giving the **sensational** mood firstly the sound made by both of them and secondly by the vision as the *russelia*'s red sparkled flowers brings the **energetic** mood to any viewer by also adding the *phoenix dactylifera* as the **special** part in this very Egyptian and country mood as it will fit so much giving the **country** mood by the degradation of the brown made by this grouping and by also the dense of it as the *dactylifera* has linear evergreen dense leaves that also moves when wind blooms which make a sensational mood to this cluster yet stripe grouping.

Garden Type:

foliage and country gardens for the different leaves and sizes and the moves made by its light weight.

Keywords:

Elegance
Dynamic



El-Azhar Park



El-Azhar Park

References:

- (1) <https://www.mashtalegypt.com/product/annual-purple-fountain-grass/>
 (2) A PLANT GUIDEBOOK FOR AL-AZHAR PARK AND CITY OF CAIRO page 401

Key Words

Mood

Layers Technique

Layers



MIU Campus



MIU Campus

Petunia x hybrida

بيتونيا  Shrubs

Species	Price ⁽¹⁾	Height	Width	Water	Sun
Hybrida	25/14cm	0.2-0.3m	0.3-0.9m	20-25Liter/day	Full-sun
Genus ⁽²⁾		Roots	Flowers ⁽²⁾		Soil
Petunia		0.2-0.3m	multi-colored trumpet-shaped		Well-drained
Blooming			Form ⁽²⁾		
5-6-7-8-9			bushy ,always grown as annual bedding plant.		
Fruit		Leaves			
No fruit		Leaves various sizes depends on cultivars. Usually oval in shape.			



MIU Campus

Garden Type:

Mediterranean Gardens, Due to it's diverse in colors, apparently Contrast color and bold huge scale of flowers which gives bold texture to that of leaves and also the texture of leaves.

Keywords:

Dramatic
Gloominess



Chorisia Chrispflora Madinaty



Tecomaria El-Azhar Park



Petunia MIU Campus

Grouping: The whole group mood: (Dramatic – Energetic)

Perhaps no flowers have seen such dramatic improvement in their suitability as petunia x hybrida. This **gloominess** plant could be used mainly in borders ground covering because of their dense blooming and incredible range of colors which gives the diversity mood to any passerby. The flower has a funnel solitary shape that are not good proportioned in scale with it's low dense ever green leaves as the leaves are so small scaled to its flowers, the leaves are having a coarse texture with ovate shape forming a **dramatic** groundcover that could be acting as a **pretties** in a grouping of **Chorisia chrispflora** tree in the background as the **special** element which completes the **dramatic** mood by it's spikes in the trunk it has and it fits so much the petunia by it's funnel shaped flowers that has a great effect in attracting people by the falling flowers over the same flower of petunia x hybrida. In the second layers come the amazing warm colored **decorative** shrub **Tecomaria Capensis**, it will perfectly match with the chorisia chrispflora and petunia x hybrids as they all have the same flower shape but the tecomaria has the closed one of it. Also the flower colors make a great harmony that gives **energetic**, unity moods. Also, the leaves texture that is smooth and the overall shape tecomaria that makes a contrast with that of petunia giving a great diverse to the stripe grouping.

References: ⁽¹⁾ <https://www.mashtalegypt.com/product/petunia/>
⁽²⁾ <https://www.nparks.gov.sg/florafaunaweb/flora/2/3/2328>

Key Words

Mood

Layers Technique

Layers



Madinaty



Madinaty

Plumbago

بلومباجو



Shrubs

Species	Price ⁽¹⁾	Height	Width	Water	Sun
auriculata	15EGP	2.5-4m	1-1.5m	25-30Liter/day	Full sun
Genus		Roots	Flowers		Soil
Tecomaria Syn. Tecoma		30-50cm	tubular orange scarlet-red		Loam, Sand, Chalk
Blooming ⁽²⁾			Form ⁽²⁾		
June-July-August-Sep.			lower many branched small tree Aromatic, yellowish-white		
Fruit			Leaves		
Small brown seeds			Light green in All seasons		



Madinaty

Garden Type:

Mediterranean garden due to its baby blue clustered flowers and the contrast between its flowers color and its leaves color also could be in Modern garden due to its calm mood.

Keywords:

Soothing
Calmness



Plumbago Madinaty



Dafla Madinaty



Vinca Madinaty

Grouping: The whole group mood: (Relaxing – Protective – Romantic)

Plumbago Capensis is excellent as a foundation planting, or when used in planters. It will cascade down a retaining wall, showing off its unusual blue snow like flakes that appear as flowers. The group of flowers with pale blue color going from a cluster effect that gives a very contrasting mood with its dark green oval dense leaves. It gives very fascinating clusters of enchanting color, its one of the most **soothing** shrubs that has to be supported with same bright effect. So its acting as a **pretties** in a grouping of the amazing **vinca** as a perennial **infill** shrub with its beautiful white sparkling flowers that are covering all the ground giving a sky like shape full with stars through its green leaves as a background all this beautiful view giving the warm **protective** mood. It has a beautiful white color fan-like horizontal flowers with no depth that are also growing in pairs. **Dafla**, the **decorative** shrub in the second layer giving the **romantic** mood by its soft delicate pink flower that creates **calmness** to the grouping and by also its great contrast between its evergreen dense leaves and the bright flower it has as a **pretties** attractive shrub that have the same cluster shape of flower as that of plumbago.

References:

- (1) Mashtal at El-Azhar
(2) A PLANT GUIDEBOOK FOR AL-AZHAR PARK AND CITY OF CAIRO page 232

Key Words

Mood

Layers Technique

Layers



El-Azhar Park

Plumeria Alba

ياسمين هندي أبيض



Shrubs

Species	Price ⁽¹⁾	Height	Width	Water	Sun
Alba	440 EGP	2m-5m	2-3m	15-20Liter/day	Full sun
Genus		Roots	Flowers		Soil
Plumeria		0.4-0.6m	Aromatic, yellowish white		Well-drained
Blooming ⁽²⁾			Form ⁽²⁾		
May-June-July			Deciduous, many-branched small, canopy tree		
Fruit		Leaves			
Pods		Dark-green, alternate narrow, corrugated			



El-Azhar Park



El-Azhar Park

Garden Type:

formal gardens and foliage as it's leaves are different, and has a unique form with layers of green, while the forms are not bushy and fit to a uniform shape.

Keywords:

Sensational
Landmark
Stationary



Plumera Alba El-Azhar Park



Acalypha Madinaty



Plumbago Madinaty

Grouping: The whole group mood: (Relaxing – Tropical)

The very elegant small tree, Plumeria alba. It's tropical waxy smooth very special pointed leaves that have the dark green color that leads to highlight the white flower with yellow center that grabs the attention by it's pure petal that also make a great **sensational** mood by it's good smell that sums the perfect elegant form the shrub gives to any passerby which makes him stand beside this beautiful big shrub and take a deep look to it. This remarkable tree gives a great **landmark** by it's symmetrical geometry and strong **stationary** look due to it's thick branches. The **skeleton** acting large shrub plumeria alba is in the grouping of **Acalypha** as the first layer presenting a **pretties** shrub which has a rough textured leaves of coppery brown color and tooth-like shape that makes a great highlighting to this beautiful group and also giving the **tropical** mood that matches in any African or coastal zone gardens. also by adding the **Plumbago** annual shrub as a **decorative** element in the grouping it's going to give the calmness and **relaxing** mood the group needs by it's baby blue flower colors also the cluster its flower makes making the grouping more uniformed.

References: ⁽¹⁾ <https://www.mashtalegypt.com/product/frangipani/>

⁽²⁾ A PLANT GUIDEBOOK FOR AL-AZHAR PARK AND CITY OF CAIRO page 155

Key Words

Mood

Layers Technique

Layers

Strelitzia Reginae

عصفور الجنة

Shrubs

Species	Price ⁽¹⁾	Height	Width	Water	Sun
reginae	350EGP	Up to 2m	Up to 1m	15-20Liter/day	Full-Sun
Genus		Roots	Flowers		Soil
Strelitzia		0.3-0.5m	orange sepals 3 blue petals		Well drained
Blooming ⁽²⁾			Form ⁽²⁾		
5-6-7-8-9			Evergreen bold structural plant, which forms large clumps of stiff leaves		
Fruit		Leaves			
Capsules orange seeds		Grey-green, banana-like The flower stands long leaves tips.			



El-Azhar Park



Google



El-Azhar Park

Garden Type:

Mediterranean garden due to its passionate tender and vibrant colors of it's flower. The contrast by the dark green and the bright red or orange flower color.

Keywords:

Passionate
Charismatic



Darcena Madinaty



Strelitzia El-Azhar Park



Gazania Chansonette Madinaty

Grouping: The whole group mood: (Diversity – Power)

Strelitzia reginae is an evergreen climbing perennial shrub. It can reach a maximum height of 120 cm. It has vertical, large, bold dark gray-green, oblong shaped leaves with sharp vertex that makes a nice contrast with its unusual crested flowers which gives its **charismatic** character. The hard, beak-like sheath from which the flower emerges, is called the spathe, and has orange and blue petals which makes the **passionate** effect on any viewer that is passing by. The flowers are also used as cut flowers. This amazing perennial shrub acts like a **decorative** element in a grouping of **dracaena** at the background as a **skeleton** element due to its dense leaves that are having evergreen light green with the oblique linear shape of leaves that giving the effect of tropical mood which is giving the warm feeling to any viewer. Also by its cluster trunk it makes a great **diversity**. In the second layer the **Gazania Chansonette** as a **decorative** ground cover, it's flower color and pointed sharp flower leaves that also gives a **power** mood to the grouping and harmony due to it's evergreen leaves and orange firey color that completes the stripe grouping in a wild mood by its shape and warm colors.

References:

(1) Mashtal at El-Azhar Park

(2) A PLANT GUIDEBOOK FOR AL-AZHAR PARK AND CITY OF CAIRO page 279

Key Words

Mood

Layers Technique

Layers

Tecomaria

تكوماريا



Shrubs

Species	Price ⁽¹⁾	Height	Width	Water	Sun
capensis	70 EGP	1.5-2m	1.2-1.5m	10-15Liter/day	Full sun
Genus		Roots	Flowers		Soil
Tecomaria Syn. Tecoma		30-50cm	tubular orange scarlet-red		Well-drained
Blooming ⁽²⁾			Form ⁽²⁾		
June-July-August-Sep.			Erect evergreen with slender stems can be trained as climber		
Fruit		Leaves			
Small brown seeds		mid-green opposite diamond shape with serrated leaflets			



El-Azhar Park



El-Azhar Park



El-Azhar Park

Garden Type:

Mediterranean garden due to its passionate tender and vibrant colors of its cluster bell-shape flower. The contrast by the dark green and bright red or orange flower color.

Keywords:

Delicate
Cheerful
Attractive



Tecomaria Stans El-Shrouk



Durranta Erecta El-Azhar Park



Gazania Chansonette Madinat

Grouping: The whole group mood: (Vibrant – Welcoming – Power)

Tecomaria Capensis is an eye relieving shrub has contrast between its orange flowers and green leaves that make it very **attractive**. It is providing a **delicate** mood through its pointed non-uniform free standing red closed pointed bell-shaped flower with its serrated leaflets that makes tecomaria a reaching out **cheerful** plant that should be grouped with other plants that has the same effect to form an overall distinctive reaching out grouping of colorful layers with flowers that gives tecomaria's flower its right proportion to be seen and gives the vibrant effect that makes the garden shiny through the grouping. In this stripe grouping, beside the **decorative** shrub of tecomaria capensis, we will add **Tecoma Stans** in the first layer making a great **skeleton** background layer for the tecomaria with its yellow flowers color that gives the grouping the **vibrant** mood and gives the viewers the **welcoming** as the grouping will all move making a symphonic motion by the wind. Also the smooth texture of its oval leaves makes a great harmony with the tecomaria leaves and also those of the **Durranta Erecta** in the second layer acting like the perennial **decorative** shrub that collects the grouping together and giving a contrast by its geometric shape due to the dense evergreen leaves it has. Adding **Gazania Chansonette** in the third layer as a **decorative** ground cover, its flower color and pointed sharp flower leaves that also gives a **power** mood to the grouping and **harmony** due to its evergreen leaves.

References:

- (1) Mashtal El-Azhar park
- (2) A PLANT GUIDEBOOK FOR AL-AZHAR PARK AND CITY OF CAIRO page 237

Key Words

Mood

Layers Technique

Layers



Madinaty



Madinet Nasr

Thevetia Peruviana

التفلة الصفراء، تيفيتيا



Shrubs

Species	Price ⁽¹⁾	Height	Width	Water	Sun
Nerlifolia	415EGP	3-5m	1.5-3m	10-15Liter/day	Full sun
Genus		Roots	Flowers		Soil
Thevetia		0.4-0.6m	Yellow-orange, bell-shaped		All-Kinds
Blooming ⁽²⁾			Form ⁽²⁾		
June-July-August			Evergreen medium, erect, open shrub or small tree		
Fruit		Leaves			
Large green, fleshy		Bright green, arrow shaped, narrow, lanceolate, leathery			



Madinaty

Garden Type:

Because of its bushy leaves and the organic shape it has, Thevetia Peruviana can be considered as foliage or country plant due to its tropical atmosphere it gives.

Keywords:

- Attractive
- Elegant
- Relaxation
- Unique



Thevetia Madinet Nasr



Pennisetum El-Azhar Park



Grouping: The whole group mood: (Refreshment – Homogeneous – Festivity)

The easily distinguished, ornamental, delightful tree Thevetia Peruviana has a **unique** appearance by its star shaped bright green leaves which make it very attractive by giving the **relaxation** mood and calmness any passer need as well as its glossiness under the sunlight. Its bushy leaves and its interlocking form make it a canopy shading tree. Thevetia is famous by its bell-shape twisted flower that has a yellowish orange color that make it so harmonic with its leaves giving **elegant** bright look. All parts of the plant and especially the seeds are highly poisonous and Burning the wood or plant material can produce toxic smoke. This **special** shrub looks very elegant and bright when planted in clusters in gardens and in courts with interlacing group with Pennisetum Purpureum and russelia as the **decorative** perennial grass **Pennisetum Purpureum** has a vertical shape that gives **refreshment** atmosphere by its movement during any wind, also its feathery flower that fits the tall and thin leaves of thevetia to give the feeling of harmony and **homogeneous**. The interlacing **russelia** the perennial vertical **pretties** shrub that owes bright shining and fluffy red color that attracts any eye by the contrast made to give a mellowness and **festivity** atmosphere to the interlace grouping.

References:

- (1) <https://www.mashtalegypt.com/product/be-still-tree/>
- (2) A PLANT GUIDEBOOK FOR AL-AZHAR PARK AND CITY OF CAIRO page 181



Madinaty



Madinaty

Wedelia

ويداليا Shrubs

Species	Price ⁽¹⁾	Height	Width	Water	Sun
trilobata	230EGP	0.3-0.6m	0.6-0.8m	8-10Literr/day	Full sun
Genus		Roots	Flowers		Soil
wedelia		0.2-0.3m	daisy-like,yellow flowerheads		Well-drained
Blooming ⁽²⁾		Form ⁽²⁾			
all the year		evergreen, perennial, rooting at the leaf nodes spreading widely.			
Fruit		Leaves			
No Fruit		narrow, toothed, rough for "V. balady", mid to dark green			



Madinaty

Garden Type:

The foliage gardens for the totally different leaf types and sizes from the wedalia's small leaves to the cannas broad and glossy leaves.

Keywords:

Attractive
Defensive



Bismarckia Nobilis Madinaty



Acalypha Madinaty



Euphorbia milli Madinaty

Grouping: The whole group mood: (Inspirational – Vibrant – Warm)

The Wedelia is one of the most common groundcovers, amazingly golden bright yellow color of it's flower reflects the sunlight while its leaves are dark small leaves with spicks and very harmful thorns that act as a **defensive** bush that spreads highly in the horizontal direction that makes easy green **attractive** vision. It acts like a **decorative** perennial in a stripe grouping of **Bismarckia Nobilis** in the first layer acts as a **special** in this grouping and giving the stunning look by it's waxy, rough, large, silver blue fan-like leaves that also looks like a crown which makes it unique and fascinating as it gives **inspirational** mood to any passerby. **Acalypha** the perennial shrub comes in the second layer giving a brilliant **decorative** element that is unique with it's large brown leaves with rough texture that fits the wedelia spicks. Also it acts as a contrast fence to make the grouping more attractive and eye-catching. Also it makes a fence between the palm and the shrubs below. In the third layer we put **Euphorbia Milli**, the **decorative** groundcover shrub which has beautiful pairs of flowers having the red color that gives **warmness** to the grouping and also the spicks it has in its branch that fits those of the wedelia summing up this stripe grouping with the **vibrant** mood.

References:

- (1) Mashtal at El-Azhar
(2) A PLANT GUIDEBOOK FOR AL-AZHAR PARK AND CITY OF CAIRO page 350

Key Words

Mood

Layers Technique

Layers



Madinaty



Madinaty

Winca

وينكا



Shrubs

Species	Price ⁽¹⁾	Height	Width	Water	Sun
Roseus	65 EGP	0.7-1.0m	0.3-0.6 m	15-20Liter/day	Full sun
Genus		Roots	Flowers		Soil
Catharanthus		30-40 cm	White-pink, salver-form		Well-drained
Blooming ⁽²⁾			Form ⁽²⁾		
April-May-June-July			Perennial evergreen Fleshy Shrub has stiff and slightly untidy stems.		
Fruit		Leaves			
divergent follicles pairs		Mid-to dark green opposite oblong-ovate with paler midribs			



Madinaty

Garden Type:

Mediterranean garden due to its White paired flowers and the contrast between its flowers color and its leaves color also could be in Modern garden due to its tropical mood.

Keywords:

Tropical
Neutral
Dominant



Ficus Nitida Madinaty



Pelargonium Zona Madinaty



Amaranthus Madinaty

Grouping: The whole group mood: (Refreshing – Various)

Winca is a very pretty perennial shrub that grows in different colors pink, purple and white, it's flower usually covers the ground as it's flower is so **dominant** and grows in pairs having a 2D plan shape and fan-shape foliage. The white colored flowers are fitting in any grouping and give the **neutral** mood to any grouping which makes balance of any unpleasant grouping and it also increases the joyful groupings. Vinca usually gives **tropical** mood due to its huge contrast between the bright white flower color and the dark green smooth oval shaped leaves. It acts like **decorative** element when it's in a stripe grouping of **Ficus Nitida** as the **skeleton** background element because of its evergreen dense leaves and its geometrical neutral shape which gives a great contrast with the **decorative pelargonium zonal** in the second layer by its unique green leaves that gives the **various** mood to any passer. Also the cluster pinkish flower of geraniacea makes a great fit with vinca and the perennial shrub **amaranthus** in the third layer presenting the annual **pretties** part in this grouping and by its brownish purple big leaves, it completes the **refreshing** mood this grouping aims to.

References:

- (1) <https://www.mashtalegypt.com/product/vinca/>
 (2) A PLANT GUIDEBOOK FOR AL-AZHAR PARK AND CITY OF CAIRO page 327

Key Words

Mood

Layers Technique

Layers

Bismarckia Nobilis

بيسماركيا



Palms

Species	Price ⁽¹⁾	Height	Width	Water	Sun
Nobilis	740 EGP	12-15m	Up to 5m	70-80Liter/day	Full sun
Genus		Roots	Flowers		Soil
Bismarckia		1.2-1.5m	Unisexual, small, fragrant white		Well-drained
Blooming ⁽²⁾			Form ⁽²⁾		
June, July			Massive tropical palm with heavy green fan leaves		
Fruit		Leaves			
Round fleshy fruit		Bright light waxy and attached to the trunk have sharp teeth			



Madinaty



Madinaty



Madinaty

Garden Type:

Mediterranean garden due to its Symmetrical shape has in its leaves and the rough texture of its trunk and leaves also because of the sharp edges of the leaves.

Keywords:

Inspirational
Formal
Landmark
Eye-catchy



Syagrus MIU Campus



Ocimum Basilicum Madinaty



Lantana Camara El-Azhar Park

Grouping: The whole group mood: (Noticeable – Joy – Pleasant)

Bismarckia Nobilis a stunning palm of waxy, rough, large, silver blue fan-like leaves that also looks like a crown which makes it unique and fascinating in its own way as it gives **inspiration** when planted alone. It's for sure acts like a **landmark** due to its massiveness. Although it is too short for a palm to be but it's symmetric, pointed edges, make any space more important and **formal** and easily to **eye catch** to passers. Bismarckia Nobilis the amazing palm is usually acting like a **special** palm in groups and as well as our grouping would use it with the palm **Syagrus Romanzoffinum** that is also a **special** palm in the group which make this group more **noticed** due to the combination of palms in the first two layers and the connection made by the palms and shrubs in one group as **Ocimum Basilicum** is going to be in the second layer as annual shrub that presents a **decorative** perfectly in the stripe group. It's greyish purple bottle brush like spine flower matches the bismarckia silver color leaves also the evergreen leaves of ocimum makes a dense view or shape that is like a transition between a palm and the perennial shrub comes in the third layer which acts as also the **decorative** element, **Lantana camara** is perfectly added to the group giving it the **joy** mood by its little dense yellow flowers that are spread all over the ground making the grouping view more eye-catchy and such a **pleasant** landmark in any modern garden.

References:

- (1) Mashtal at El-Azhar park
- (2) A PLANT GUIDEBOOK FOR AL-AZHAR PARK AND CITY OF CAIRO page 34

Key Words

Mood

Layers Technique

Layers

Chamaerops Humilis

كاميرويس Palms



Madinaty

Species	Price(1)	Height	Width	Water	Sun
Humilis	600 EGP	2m-3m	2m-4m	30-40Liter/day	Full sun
Genus		Roots	Flowers		Soil
Chamaerops		0.9-1.0m	Yellow in dense, almost hidden		Well-drained
Blooming(2)			Form(2)		
June-July			Bushy and shrubby palm		
Fruit		Leaves			
Reddish-brown fruit		Grayish green leaves 0.6-0.9m long			



Madinaty



Madinaty

Garden Type:

Chamaerops Humilis is a very unique, gloomy colored and interesting clustered palm that makes a great shade and shadow which fits in Mediterranean gardens.

Keywords:

Gloomy
Scary
Creepy



Acalypha Madinaty



Euyropus Acaurus, Madinaty



Euphorbia milli Madinaty

Grouping: The whole group mood: (Fiery – Energetic – Defensive)

The messy palm of Chamaerops Humilis that gives a jungle shape from afar by it's very heavy head. It's head contains many of the fan-like evergreen leaves that are produced in many layers making a really heavy shape and dense one that's so **creepy** and **scary** to any eye. It's a cluster of many palms that makes a really **gloomy** shape by it's bad proportions it has and the so messy cluster shape it makes. It has a hairy trunk that have a brown color with some thrones. It presents the **special** element in this wild grouping of **acalypha** in the first layer giving a transition zone from the brown color to the green one coming in the next layer. Acalypha acts as a perennial shrub that is a **decorative** element in this grouping and by it's brown rough wide dense leaves matches the gloomy shape of the humilis. Comes in the next layer the **euphorbia milli**, a **decorative** ground cover shrub that gives the awful shape by it's spiked branches and the **energetic** feeling by its red paired flowers that gives the **fiery** mood as it's interlaced with the third layer of **eyroubs acareius** that matches this stripe grouping by It's branches leaves that give the cactus shape which act as a **defensive decorative** element and matches this wild gloomy grouping.

References:

- (1) Mashtal at El-Azhar park
- (2) A PLANT GUIDEBOOK FOR AL-AZHAR PARK AND CITY OF CAIRO page 37

Key Words

Mood

Layers Technique

Layers




Madinaty



Madinaty

Chrysalidocarpus Lutescens

أريكا صفرا



Palms

Species	Price ⁽¹⁾	Height	Width	Water	Sun
Lutescens	2340 EGP	5m-7m	Up to 4m	70-80Liter/day	Full sun
Genus		Roots	Flowers		Soil
Chrysalidocarpus		0.5-0.7m	Yellowish white 0.6m long		Well-drained
Blooming ⁽²⁾			Form ⁽²⁾		
April-May			Evergreen, upright, vase-shaped palm-like		
Fruit			Leaves		
Oval fleshy brown fruit			Spiral, linear shaped, evergreen leaves, 2m long		



Madinaty

Garden Type:

Cottage gardens are suitable for the amazing palm due to its dense color and shape and for also the variety it has in sizes of the leaves and its high need of maintenance.

Keywords:

Privacy
Power



Areca Madinaty



Amaranthus Madinaty



Vinca Madinaty

Grouping: The whole group mood: (Attractive – Protective)

The very bushy palm, Chrysalidocarpus Lutescens (Areca) is an ornamental palm that is a perfectly standing alone palm that gives the **power** mood due to the geometric symmetrical shapes it has made by its linear spiral evergreen smooth leaves and the clustered bamboo like trunk that both makes a great fence like palm that's used to give **privacy** to any garden it is added to for its dense cluster shape. Its impressive and elegant making its multiple stems look like a bouquet of palm trees. Finally, it could be used as a natural screen in courts and outdoor spaces. It acts like a **skeleton** palm in any grouping to be a background for the first layer of the perennial shrub of the great **Amaranthus** presenting the **pretties** part in this grouping and by its brownish purple big leaves, it is making a great contrast which leads to an **attractive** mood to this fence like group. Both of amaranthus and areca having a dense form which approves the privacy mood. In the second layer comes the amazing **vinca** ending this group by being a **decorative** element with its beautiful white sparkling flowers that are covering all the ground giving a sky like shape full with stars through its green leaves as a background all this beautiful view giving the warm **protective** mood.

Cycas

سيكاس ذيل الجمل



Palms



Madinaty



Madinaty

Species	Price ⁽¹⁾	Height	Width	Water	Sun
revoluta	900 EGP	2-3m	1-1.5m	70-80Liter/day	Full sun
Genus		Roots	Flowers		Soil
Cycas		0.5-0.7m	Cone like separate flowers		Well-drained
Blooming ⁽²⁾			Form ⁽²⁾		
June-July			Evergreen fern-like robust-stemmed cycad		
Fruit			Leaves		
Reddish-brown fruit			Leathery, linear lance-shaped, pinnate, stiff, evergreen		



Madinaty

Garden Type:

Formal garden for its luxurious and richness given by its symmetrical shape in planning presented by the leaves and the trunk shape. Also it gives a control by its adaptability.

Keywords:

Adaptability
Luxurious
Decent



Ficus Nitida Madinaty



Anthimus Punctata Google



Senecio Cineraria Madinaty

Grouping: The whole group mood: (Unity – Harmony – Formal – Elegance)

The Cycas mini palm is a very unique by its purity and **adaptability** with any plant giving all of them the elegant look by its dense dark green sharp wide feathery tidy leaves and its short dark brown trunk that has thrones which gives **luxurious** effect due to its symmetrical shape. The leaves have waxy texture and they are heavy to be moved by wind which make it the **decent** form. It's mostly used in entrances and courts and also make a great effect as a **special** in the cluster groups and stripe ones as this grouping of **Ficus Nitida** in the first layer giving a **skeleton** background layer by its dark dense leaves that have oval shape and smooth texture which make a contrast with the cycas leaves texture but a matching through the dark colors that make a **unity** effect to the grouping. Adding **Anthimus Punctata** annual shrub that presents the **decorative** element in the group. Its flowers are white with yellow center that gives the grouping a **formal** effect by the contrast made in white and dark colors. The matching of the anthimus flowers leaves that make a symmetrical tidy shape as those of the cycas make a great **harmony** in the grouping. Also the third layer of the ground covering **decorative senecio cineraria** that makes the great contrast needed in any formal mood to show the cycas more by its silver unique dense leaves that has also a waxy texture as those of cycas and it sums up the grouping with the **elegance** mood.

References:

- <https://www.mashtalegypt.com/product/cycad-palm/>
- A PLANT GUIDEBOOK FOR AL-AZHAR PARK AND CITY OF CAIRO page 63

Key Words

Mood

Layers Technique

Layers



El-Azhar Park



El-Azhar Park

Phoenix Dactylifera

نخيل البلح



Palms

Species	Price ⁽¹⁾	Height	Width	Water	Sun
dactylifera	220EGP	15-20m	5-7m	70-80Liter/day	Full sun
Genus		Roots	Flowers		Soil
Roystonea		1.2-1.5m	Bowl-shaped creamy flowers		Well-drained
Blooming ⁽²⁾			Form ⁽²⁾		
June-July-August-Sep.			Single smooth white trunk columnar, thinner at the crown shaft		
Fruit		Leaves			
Dates		4-6mlong many linear grayish green leaflets gives 3D effect			



Madinaty

Garden Type:

Could be Productive garden due to its date product. Or Foliage Gardens due to it's long wide leaves and the movement it gives by it's semi organic shape.

Keywords:

Strong
Welcoming
Power



Pennisetum El-Azhar Park



Acalypha Madinaty



Cycas Madinaty

Grouping: The whole group mood: (Uniform – Refreshment – Harmony)

Phoenix Dactylifera is a very common palm in Egypt that shows the Egyptian character, culture and sense of belonging. It is a **strong** beautiful palm that presents the strength mood due to it's sharped brown trunk structure and its long wide leaves that grow linear having thrones, it also gives the feeling of **power** and independence. Its delightful leaves make a great landmark in any garden that could be easily eye-grapping. It gives a friendly, **welcoming** effect with it's dates that makes it unique from a distance. it is used as an ornamental shade and street palm when planted at close intervals, popular in parks and gardens. It is always acting like a **special** palm in any grouping and in our grouping it will also act as a special palm beside a **decorative** perennial grass **Pennisetum Purpureum** that also has a vertical shape brown leaves that gives **refreshment** atmosphere by it's movement during any wind, also its feathery flower that fits the long wide leaves of the dactylifera to give the feeling of harmony and homogeneous.in the second layer **acalypha** would be added as a **decorative** shrub that completes the **harmony** mood due to it's wide rough textured leaves that matches with the previous layers and also move with the wind making a beautiful Egyptian symphony and mood.By ending with the **cycas** in the third layer as a **decorative** element in the stripe group it is defining it so well giving the group the unity shape which reflects the **uniform** mood.



Madinaty

Ravenala Madagascariensis

رافينالا



Palms

Species	Price ⁽¹⁾	Height	Width	Water	Sun
madagascariensis	1500EGP	6-9m	Up to 6m	60-70Liter/day	Full sun
Genus		Roots	Flowers		Soil
Ravenala		1.2-1.5m	small creamy white		Well-drained
Blooming ⁽²⁾			Form ⁽²⁾		
June-July-August-Sep.			Subterranean green trunk, elevating the symmetrical crown		
Fruit		Leaves			
Brown has blue seeds		Long, green leaves and yellow at the tips. fan- shaped leaves			



Cycas Madinaty



Ixora chinensis Google



Durranta Erecta El-Azhar Park

Grouping: The whole group mood: (Attractive – Vibrant – Energetic)

The unique **motivating** palm *Ravenala madagascariensis* is a noticeable landmark by its huge vertical glossy peacock-like leaves which are very **attractive** from any place. It can be used in fencing as its massiveness blocks the sight and the **safeness** and **privacy** are achieved perfectly. It's also give the **joyful**, cheerful by its movement effect its shape gives so it could be added in any patio. It's placed in no-wind direction to prevent any injuries or damages happens to the around due to its huge scale. This **special** palm is placed with *Cycas decorative* palm in the first layer which creates some formal form to the place by its dark green leaves and brown rough trunk. And by adding the red *Ixora Chinensis* in the second layer as **decorative** shrub that has the red warm color which gives the **energetic** mood that matches the movement mood *ravenala madgascariensis* gives and also the cluster shape of its flower make it more joyful and **attractive** for the passer eyes. It makes the grouping more balanced enthusiastic by adding the *Durranta errecta*, perennial **decorative** shrub that will fit the most due to its soft little bright green leaves that will add more **vibrant** and energetic feelings to this stripe grouping.



Madinaty



Madinaty

Garden Type:

Foliage Gardens due to its huge, glossy, vertical leaves and the movement it gives by its semi organic shape also the junglial mood it gives by its colors and massiveness.

Keywords:

Motivational
Attractive
Privacy
Joyful

References:

(1) <https://www.mashtalegypt.com/product/travellers-palm/>

(2) A PLANT GUIDEBOOK FOR AL-AZHAR PARK AND CITY OF CAIRO page 161

Key Words

Mood

Layers Technique

Layers



El-Azhar Park



El-Azhar Park

Roystonea Regia

نخيل ملوكي



Palms

Species	Price ⁽¹⁾	Height	Width	Water	Sun
regia	220EGP	15-20m	6-10m	70-80Liter/day	Full sun
Genus		Roots	Flowers		Soil
Roystonea		1.2-1.5m	Tiny cup-shaped 3-petaled		Well-drained
Blooming ⁽²⁾			Form ⁽²⁾		
June-July-August-Sep.			Single smooth white trunk columnar, thinner at the crownshaft		
Fruit		Leaves			
Rounded small fruits		Long dark green feather-shaped arranged in several levels			



El-Azhar Park

Garden Type:

Formal garden due to its luxurious design and royalty mood, which will define paths and make it symmetrical good design any formal gardens need to give power and control.

Keywords:

Luxurious
Dominant
Royalty



Ficus Nitida Maghazy



Durranta Erecta El-Azhar Park



Senecio Cineraria Madinat

Grouping: The whole group mood: (Attractive – Formal – Glorious)

“The Royal Palm” or by its scientific name *Roystonea Regia* the charismatic palm that gives any space its elegance and formal view due to its tall, smooth, cement grey trunk. The degrading in color and size of its trunk make it **luxurious**, as its starting thin from the top ending thicker at the bottom also its color is starting light at the top and stops to the dark bottom. Unlike other palms this palm is less intimidating. **Dominant** when alone or grouped with other plants. It brings **royalty** to the pathways or streets when it's used there by its dark green, pinnate-shaped leaves with glossy texture. It has a good proportion between leaves and trunk. Always a **special** in any grouping and this grouping we will make it more special and dominant as we are going to firstly add the **Ficus Nitida** tree in the **skeleton** background part to make a great contrast between its dark green dense leaves and the bright light trunk of the royal palm which make them so formal and royal. while the second layer would be crowned by the **Durranta Erecta** that will also be specialized by its dense green leaves that will make a great match with the cassia nitida as they both could be shape in symmetrical geometrical shapes that adds a great royalty **formal** mood in any formal garden acting like a perennial **decorative** shrub. **Senecio Cineraria** in the third layer as a perennial shrub that acts as **pretties** in this grouping and has a greyish color which admits the contrast form to make the grouping more **glorious**. Also, the hairy texture of its leaves are making the **attraction** more existing.

References: ⁽¹⁾ <https://www.mashtalegypt.com/product/royal-palm/>
⁽²⁾ A PLANT GUIDEBOOK FOR AL-AZHAR PARK AND CITY OF CAIRO page 52 **Key Words** **Mood** **Layers Technique** **Layers**




MIU campus



Madinaty

Syagrus Romanzoffianum

نخيل الكوكس  Palms

Species	Price ⁽¹⁾	Height	Width	Water	Sun
Syagrus	595 EGP	10-13m	6-7m	40-50Liter/day	Full sun
Genus		Roots	Flowers		Soil
Romanzoffianum		1.2-1.5m	Bush-like cluster white flower		Well-drained
Blooming ⁽²⁾			Form ⁽²⁾		
July-August			Small-trunked, tall palm		
Fruit			Leaves		
Olive-sized orange fruit			Feather type, tropical look, dense green cluster		



MIU Campus

Garden Type:

It fits in the modern gardens due to its rough texture of trunk and the symmetric it has and it's also could be in Mediterranean gardens.

Keywords:

Royal
Graceful



Ficus Nitida Madinaty



Cupressus Macrocarpa Madinaty



Amaranthus Madinaty

Grouping: The whole group mood: (Formal – Bold – Welcoming)

The great palm, *Syagrus Romanzoffianum* that grows the best in full sun, named as Queen. Contains single-trunked palm which is crowned by a beautiful head of glossy, bright green, soft, pinnate leaves forming a **graceful**, drooping canopy. The ornamental, bright orange dates are produced in hanging clusters and ripen during the winter months. The dead fronds are persistent and often require pruning to remove. The grey trunk is ringed with old leaf scars that creates a vintage **royal** effect. It could be placed as a **special** element in a grouping of *Ficus nitida* acting as a **skeleton** element by its dense evergreen leaves that have the oval shape with no flower and no fruit giving the contrast geometric shape it needs to create a **formal** mood to the grouping. Comes in the second layer, *Cupressus macrocarpa* as a **skeleton** by making the evergreen background by its dense and overlapped leaves to the vibrant colors coming in the grouping which gives the **bold** feeling. In the ending third layer, the perennial shrub of the great *Amaranthus* presenting the **pretties** part in this grouping and by its brownish purple big leaves, it is making a great contrast which leads to an attractive mood to this fence-like group. All the grouping has a dense form which approves the **welcoming** mood.

References:

- (1) Mashat! in Madinaty
- (2) A PLANT GUIDEBOOK FOR AL-AZHAR PARK AND CITY OF CAIRO page 54

Key Words

Mood

Layers Technique

Layers



MIU campus



MIU Campus

Wodyetia Bifurcata

فوكس تيل



Palms

Species	Price ⁽¹⁾	Height	Width	Water	Sun
Bifurcata	1150EGP	10-15m	4-6m	70-80Liter/day	Full sun
Genus		Roots	Flowers		Soil
Wodyetia		1.2-1.5m	Bright-deep green, fox-tail		Well-drained
Blooming ⁽²⁾			Form ⁽²⁾		
June-July			Erect palm with grey trunk, pale green long waxy scales		
Fruit		Leaves			
Orange-red olive like		Bright-deep green looks like fox tails			



MIU Campus

Garden Type:

It could be used in modern gardens due to its symmetrical shape and royalty yet tropical view it has.

Keywords:

Spectacular
Elegance



Wodyetia Bifurcata MIU campus



Pennisetum El-Azhar Park



Russelia Google

Grouping: The whole group mood: (Refreshment – Harmony – Festivity)

The Wodyetia Bifurcata is known as The foxtail palm. This amazing palm has one of the most **spectacular** foliage displays of all palms. Single trunk palm, delicately arched long leaves which gives the **elegance** it has in its look and usage of this palm tree in any entrance path. The leaves look like a foxtail or bottle brush which has a 3d effect and swing from the smallest wind which creates a beautiful dynamic form. The crowns haft is longer than most other palms which makes it the dense shape it has. It acts as a special in any grouping and for this elegant group planted in clusters in gardens and in courts with interlacing yet stripe group of Pennisetum Purpureum and russelia as the **decorative** perennial grass **Pennisetum Purpureum** has a vertical shape that gives **refreshment** atmosphere by it's movement during any wind, also its feathery flower that fits the tall fox tail leaves of Wodyetia Bifurcata palm tree to give the feeling of **harmony** and **homogeneous**. The interlacing **russelia** the perennial vertical **pretties** shrub that owes bright shining and fluffy red color that attracts any eye by the contrast made to give a mellowness and **festivity** atmosphere to the interlace grouping.

References:

- (1) El-Yasmine Mashtal
- (2) A PLANT GUIDEBOOK FOR AL-AZHAR PARK AND CITY OF CAIRO page

Key Words

Mood

Layers Technique

Layers



Madinaty



Madinaty

Washingtonia Filifera

واشنتونيا مجوز



Palms

Species	Price ⁽¹⁾	Height	Width	Water	Sun
filifera	1275EGP	12-15m	Up to 5m	70-80Liter/day	Full sun
Genus		Roots	Flowers		Soil
Washingtonia		1.2-1.5m	bisexual white-yellow		Well-drained
Blooming ⁽¹⁾			Form ⁽²⁾		
June-July-August-Sep.			Fan-shaped palm, with a loose and open crown		
Fruit		Leaves			
round red-black fruits		grayish-green pendulous white fibers between the segments			



Madinaty

Garden Type:

Could be Productive garden due to its date product. Or Foliage Gardens due to it's long wide leaves and the movement it gives by it's semi organic shape.

Keywords:

Strong
Landmark
Power



Acalypha Madinaty



Tecomaria El-Azhar Park



Durranta Erecta El-Azhar Park

Grouping: The whole group mood: (Welcoming – Vibrant)

Washingtonia Filifera is a desert palm that makes a great static character in any place it is replaced in. It is a straight, single-trunked having half and half look, the upper half with thrones and the lower one is pure brown with hairy rough texture. It has a fan-like leaves that are **strong**, dense and could be used in products such like making baskets or rugs. The lower leaves persist on the tree after they die, forming a dense, brown, shaggy covering below the living, grey/green, broad, fan-shaped leaf with hairy filament. These dead fronds are known to be a fire hazard. The stalk of the leaves is very spines. it also acts as a **landmark** throughout the streets or in a garden for its focal point attention and unique structure of leaves. It is acting like a **special** part in a grouping of **Tecomaria Capensis**, it will perfectly match with the Washingtonia Filifera it has a red closed bell-shaped flower. Also the flower color makes a great **welcoming**, attractive moods. Also, the leaves texture that is smooth and the overall shape tecomaria has fits so much giving a warm mood. In the following layer, the second one we will make a great interlacing layer between the perennial decorative **durranta erecta** and the **acalypha** because durranta erecta will fit the most due to it's soft little bright green leaves that will add more **vibrant** and energetic feelings to this stripe grouping and the acalypha, the **pretties** shrub which has a rough textured leaves of coppery brown color and tooth-like shape that makes a great highlighting to this beautiful group and also giving the Egyptian mood that matches in any African or cultural zone gardens that matches the trunk and head of Washingtonia Filifera which gives the grouping a great harmonic colors and cultural mood.

References:

- (1) Mashtal at El-Azhar park
- (2) A PLANT GUIDEBOOK FOR AL-AZHAR PARK AND CITY OF CAIRO page 55

Key Words

Mood

Layers Technique

Layers

Washingtonia Robusta

واشنطنيا رفيع الساق Palms



Species	Price ⁽¹⁾	Height	Width	Water	Sun
Robusta	1710 EGP	15-20m	Up to 5m		Full sun
Genus		Roots	Flowers		Soil
Washingtonia		1.2-1.5m	Small, pale orange-pink		Well-drained
Blooming ⁽²⁾			Form ⁽²⁾		
June-July			Tall fan palm, Skyscraper, dense and compact crown		
Fruit		Leaves			
round red-black fruits		Large, glossy green, brown leaf-stem, thorny, cottony threads			



MIU campus



MIU Campus

Garden Type:

IT could be used in country gardens due to it could be acting like a destination point or a vanishing and starting point due to its height.

Keywords:

Welcoming
Weak
Ugly



Ficus Nitida Madinet



Cupressus Macrocarpa Madinaty



Durranta Erecta El-Azhar Park

Grouping: The whole group mood: (Unifying – Showy – Power)

The sad Washingtonia Robusta is a straight, single-trunked street palm. Which is so bad proportioned between it's trunk and head as it's trunk is thin and much taller to the scale of it's weak head that contains less dense leaves which make it so **weak** in shape but also acts as a **welcoming** landmark due to it's height that makes a huge effect on entrances. The lower leaves persist on the tree after they die, forming a dense, brown, shaggy covering below the living, bright green, broad, fan-shaped leaf with hairy filament. These dead fronds are known to be a fire hazard and it makes the palm so **ugly**. We will use it as a **special** in our grouping as it will be added to the **Ficus Nitida** that **skeleton** tree that will be in the background making a great contrast by it's dense evergreen leaves with the bright trunk of the robusta also it will make it more **showy** and less in height. In the second layer the **Cupressus Macrocarpus** the decorative element that comes to make a great combination with the ficus nitida by it's bright light green leaves and for its geometric shape it could be added in any formal garden giving the **power** effect, in the last third layer we will add the of **Durranta Erecta** acts as a perennial **decorative** shrub that is creates the **unifying** feeling to the grouping needs due to its evergreen light leaves color and the texture of the leaves that make a softness in the grouping.

References: ⁽¹⁾
⁽²⁾ A PLANT GUIDEBOOK FOR AL-AZHAR PARK AND CITY OF CAIRO page

Key Words

Mood

Layers Technique

Layers