

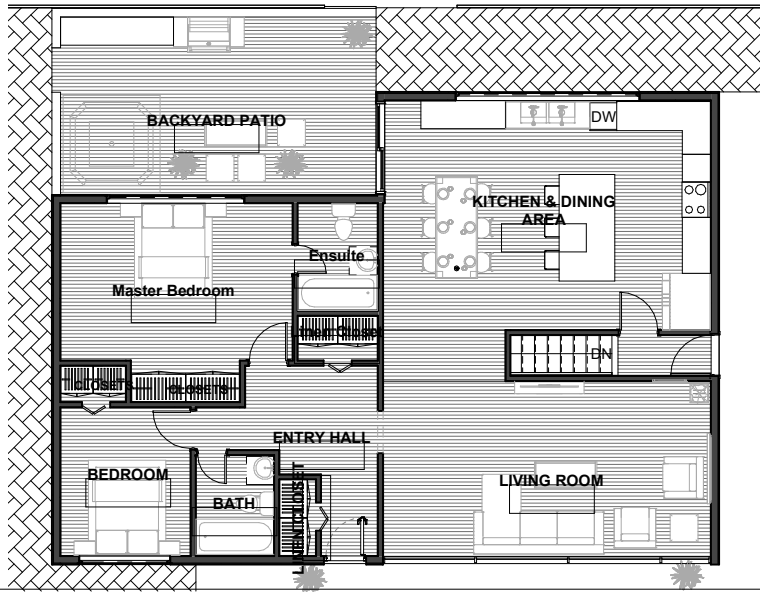
# Welcome To The Smiths Proposed Renovation

Sheets List	
Sheet Number	Sheet Name

A1	Basement Plan
A2	First Floor Plan
A3	Roof Plan
A4	North Elevation
A5	South Elevation
A6	East Elevation

Sheets List	
Sheet Number	Sheet Name

A7	West Elevation
A8	Building Section
A9	Interior 3D Kitchen
A10	Interior 3D Living Room 1
A12	3Ds
A13	Site Plan



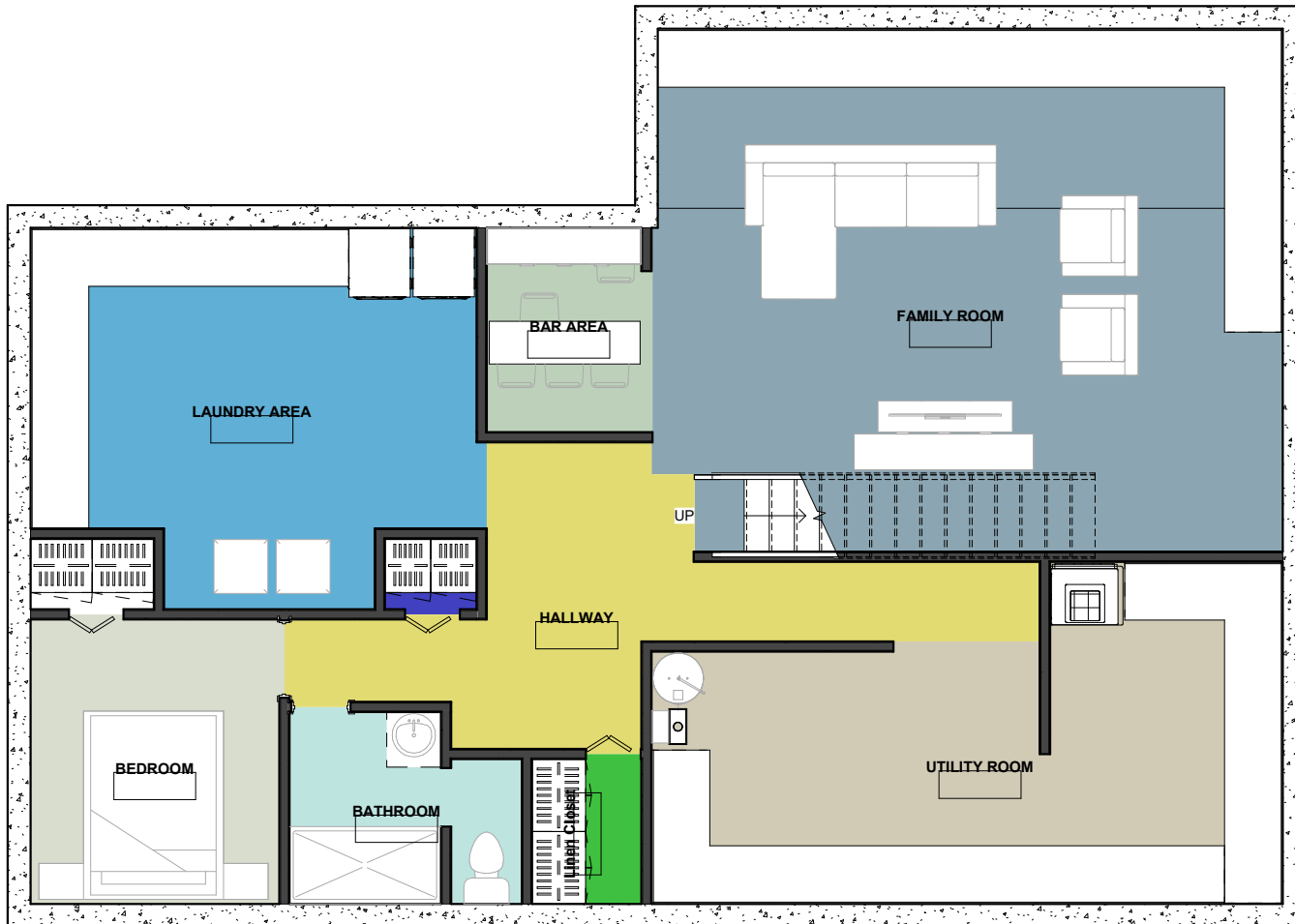
[www.autodesk.com/revit](http://www.autodesk.com/revit)

The Smiths  
Bungalow

No.	Description	Date

## Cover Sheet

Project number	P002	<b>A0</b>
Date	05/16/22	
Drawn by	Author	
Checked by	Checker	
		Scale 1/8" = 1'-0"



Total Living Area: 418 ft<sup>2</sup>



[www.autodesk.com/revit](http://www.autodesk.com/revit)

The Smiths  
Bungalow

No.	Description	Date

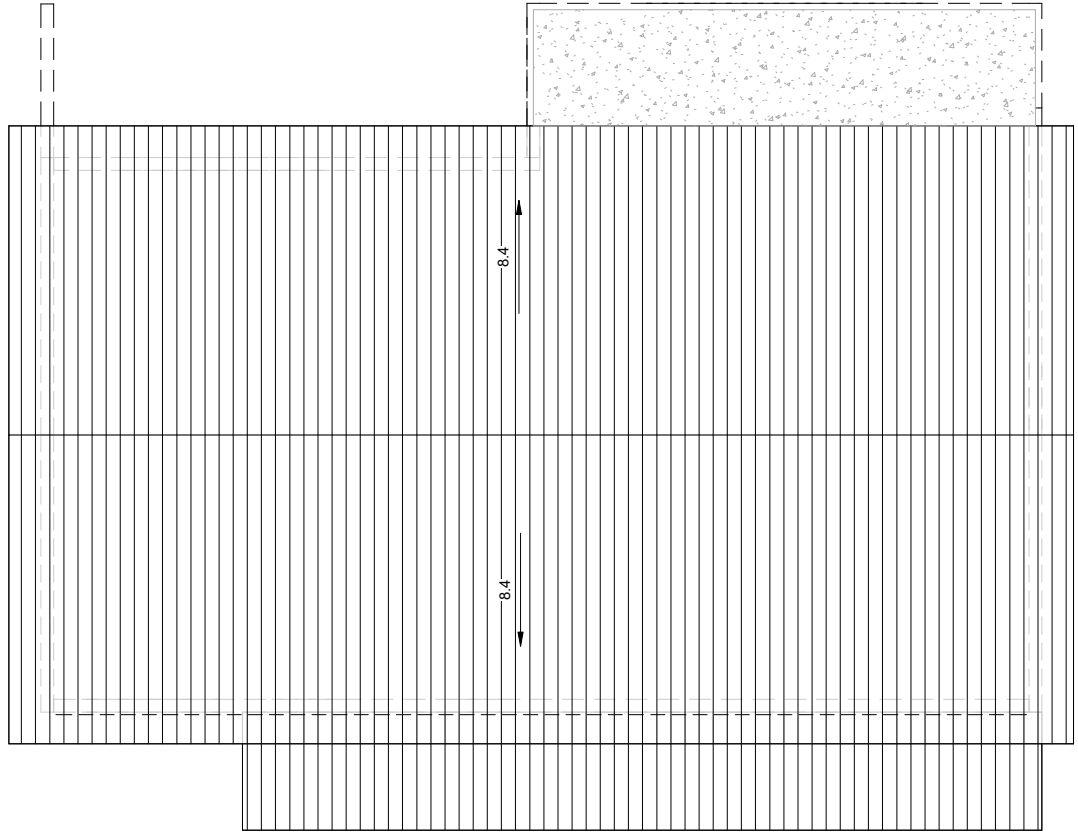
Basement Plan

Project number P002  
Date 05/16/22  
Drawn by Author  
Checked by Checker

A1

Scale 1/4" = 1'-0"





① Roof Plan  
3/16" = 1'-0"



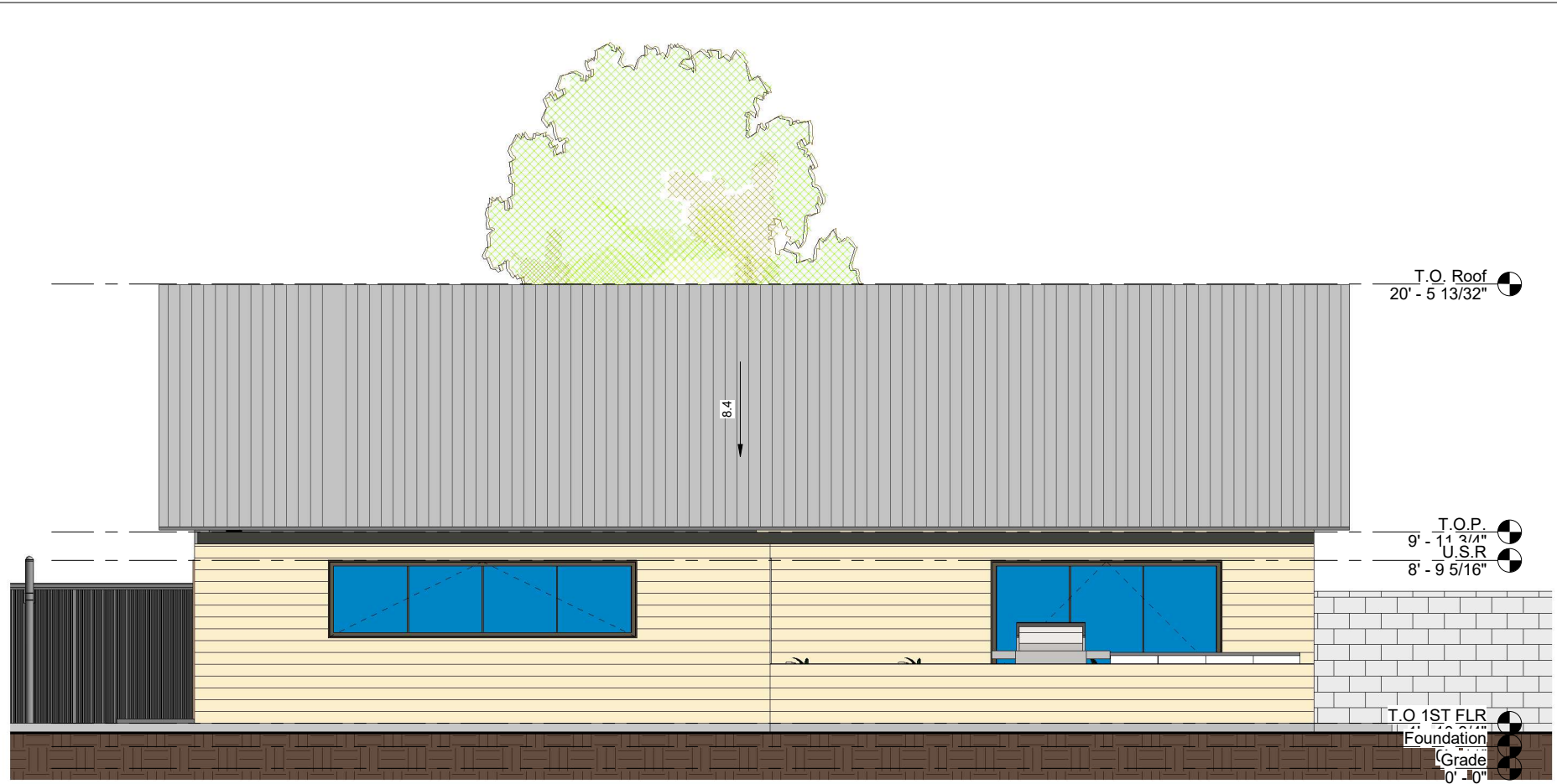
**AUTODESK**

[www.autodesk.com/revit](http://www.autodesk.com/revit)

The Smiths  
Bungalow

No.	Description	Date

Roof Plan		A3
Project number	P002	
Date	05/16/22	
Drawn by	Author	
Checked by	Checker	
Scale 3/16" = 1'-0"		



**AUTODESK**

[www.autodesk.com/revit](http://www.autodesk.com/revit)

The Smiths  
Bungalow

No.	Description	Date

**North Elevation**

Project number	P002	<b>A4</b>
Date	05/16/22	
Drawn by	Author	
Checked by	Checker	
		Scale 1/4" = 1'-0"

11/06/2022 00:42:47



**AUTODESK**

[www.autodesk.com/revit](http://www.autodesk.com/revit)

The Smiths  
Bungalow

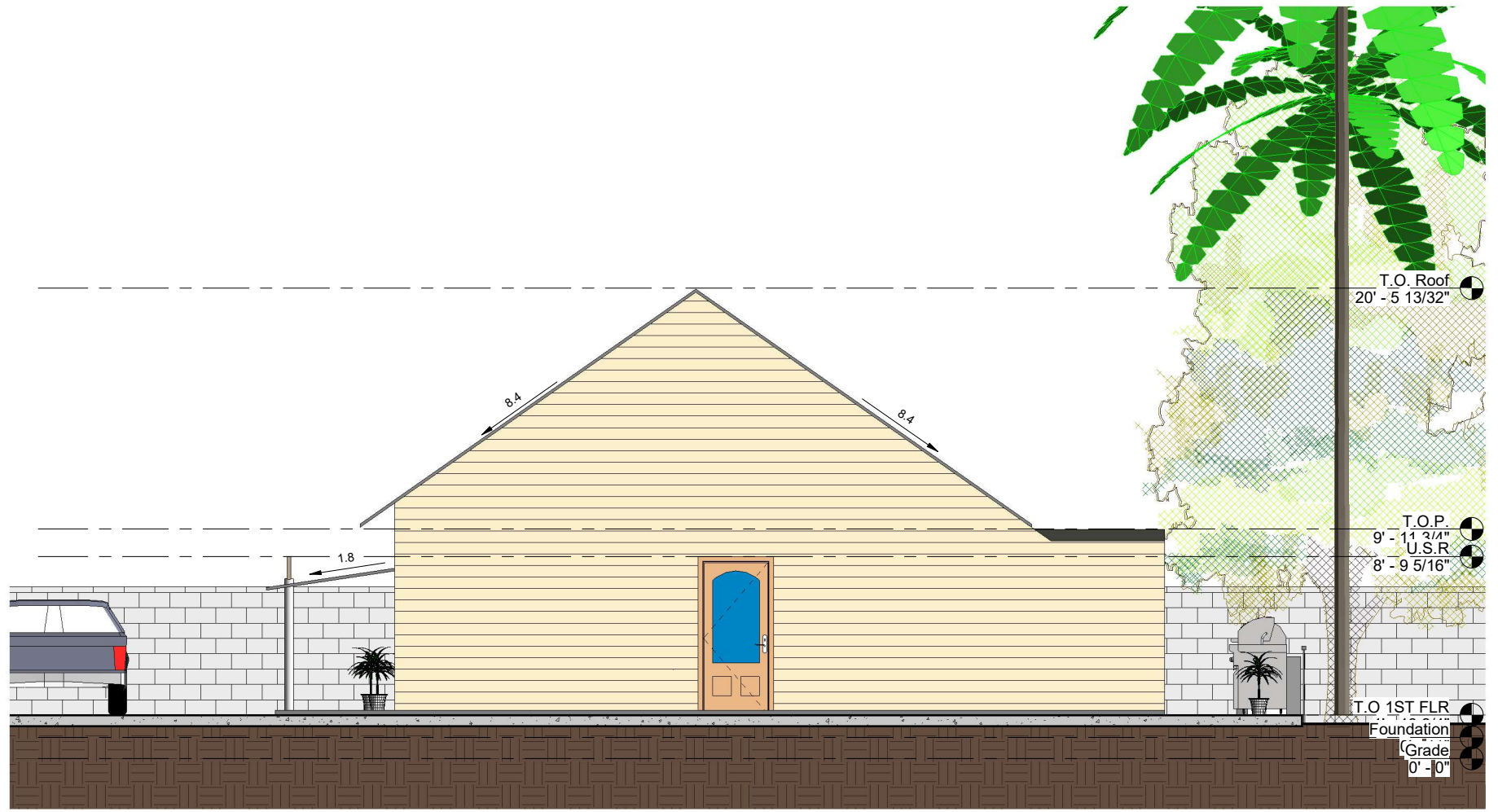
No.	Description	Date

**South Elevation**

Project number P002  
Date 05/16/22  
Drawn by Author  
Checked by Checker

**A5**

Scale 1/4" = 1'-0"



**AUTODESK**

www.autodesk.com/revit

The Smiths  
Bungalow

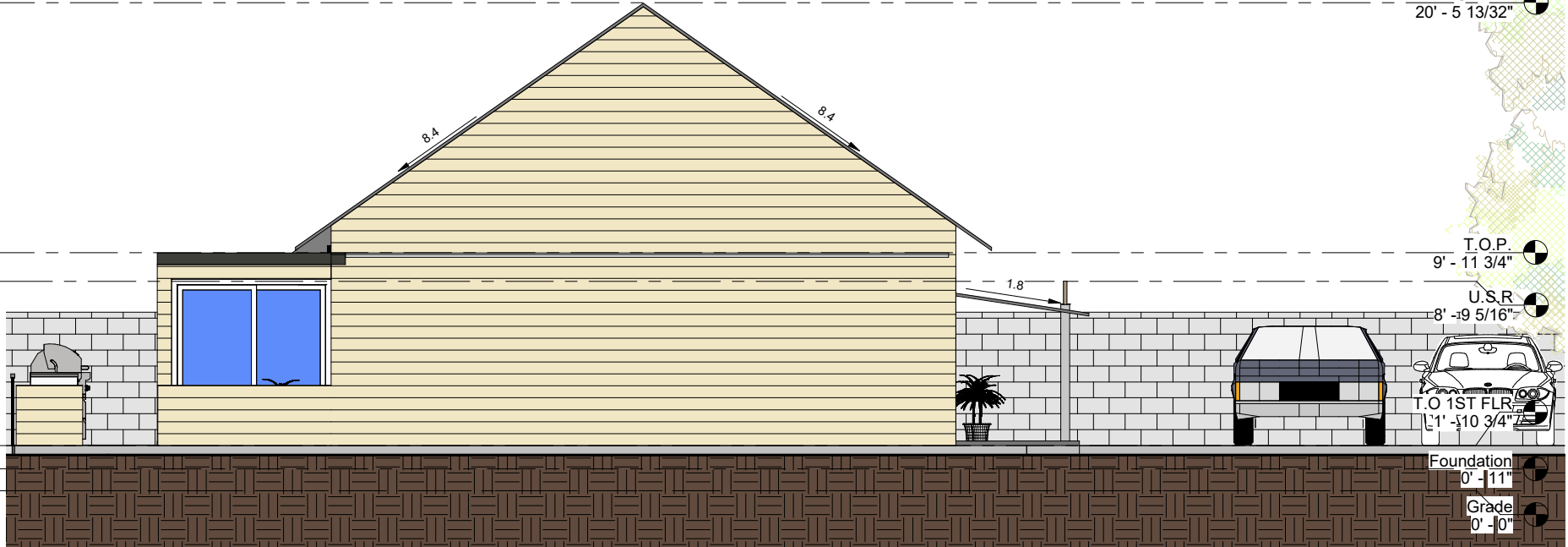
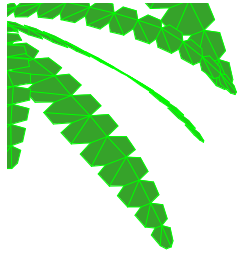
No.	Description	Date

**East Elevation**

Project number	P002
Date	05/16/22
Drawn by	Author
Checked by	Checker

**A6**

Scale 1/4" = 1'-0"



www.autodesk.com/revit

The Smiths  
Bungalow

No.	Description	Date

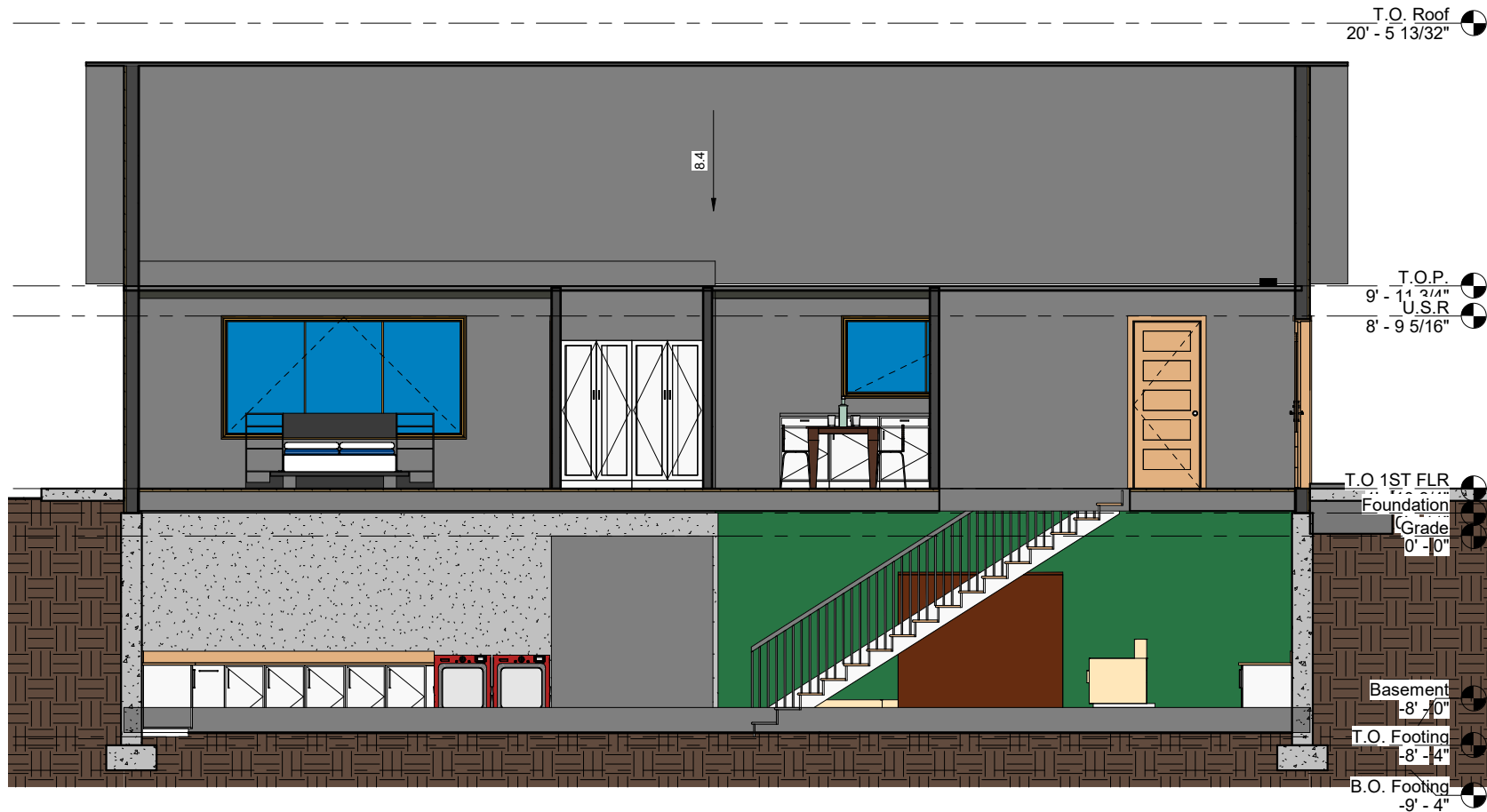
West Elevation

Project number P002  
Date 05/16/22  
Drawn by Author  
Checked by Checker

A7

Scale 1/4" = 1'-0"





www.autodesk.com/revit

The Smiths  
Bungalow

No.	Description	Date

**Building Section**

Project number P002  
Date 05/16/22  
Drawn by Author  
Checked by Checker

**A8**

Scale 1/4" = 1'-0"



**AUTODESK**

[www.autodesk.com/revit](http://www.autodesk.com/revit)

The Smiths  
Bungalow

No.	Description	Date

**Interior 3D Kitchen**

Project number P002  
Date 05/16/22  
Drawn by Author  
Checked by Checker

**A9**

Scale



**AUTODESK**

[www.autodesk.com/revit](http://www.autodesk.com/revit)

The Smiths  
Bungalow

No.	Description	Date

Interior 3D Living Room 1

Project number P002  
Date 05/16/22  
Drawn by Author  
Checked by Checker

**A10**

Scale



**AUTODESK**

[www.autodesk.com/revit](http://www.autodesk.com/revit)

The Smiths  
Bungalow

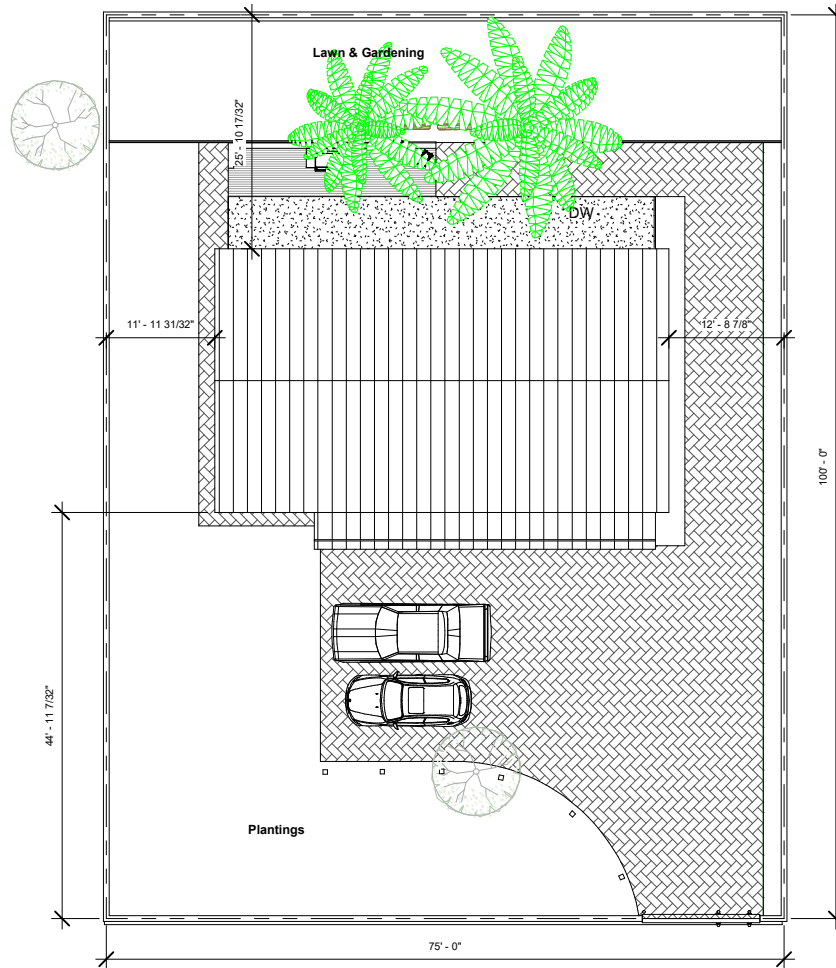
No.	Description	Date

3Ds

Project number	P002
Date	05/16/22
Drawn by	Author
Checked by	Checker

A12

Scale



**AUTODESK**

[www.autodesk.com/revit](http://www.autodesk.com/revit)

The Smiths  
Bungalow

No.	Description	Date

**Site Plan**

Project number P002  
Date 05/16/22  
Drawn by Author  
Checked by Checker

**A13**

Scale 1 : 150