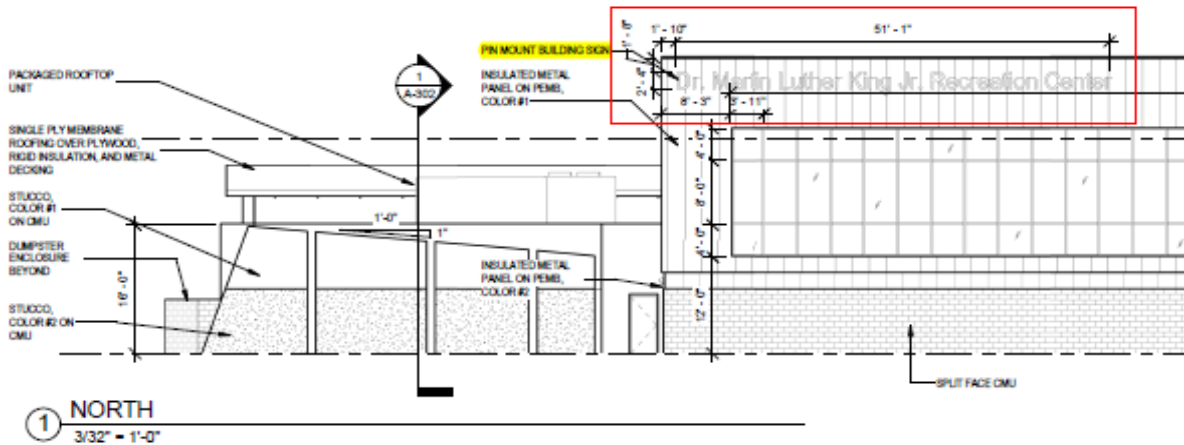


Sign Count

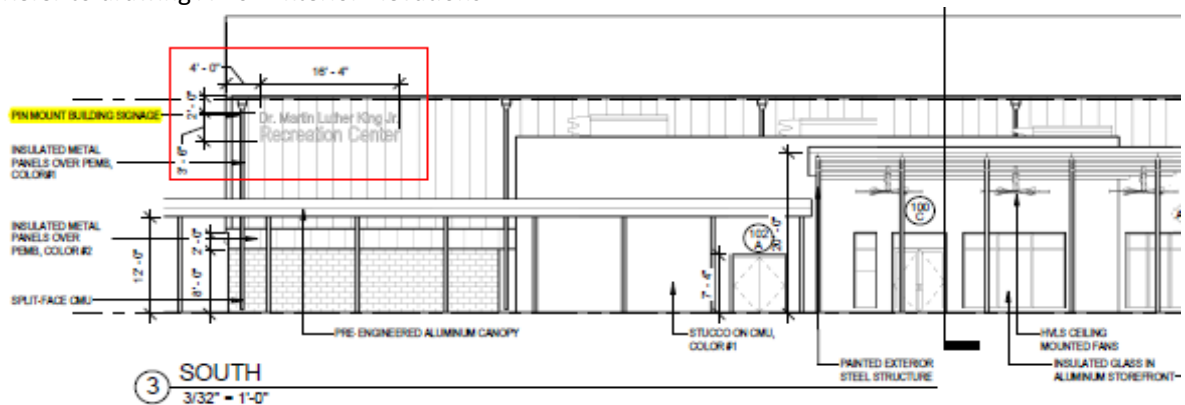
Dimensional Letters	Size	Qty
Dr. Martin Luther King Jr. Recreation Center (North)	2'-4"H x 51'-1"W	1
Dr. Martin Luther King Jr. (South)	1'-3"H x 16'-4"W	1
Recreation Center (South)	1'-9"H x 16'-4"W	1
		3

Design Details

Refer to drawing A-201 Exterior Elevations



Refer to drawing A-202 Exterior Elevations



Material Specification

- C. Fabrication of Letters: Fabricate letters to comply with requirements indicated below and as indicated on drawings.
1. Cast letters: Form letters by sand casting. Produce characters with smooth flat faces, sharp corners, precisely formed lines and profiles, free from pits, scale, sand holes and other defects. Cast anchoring devices into individual letters as required for anchorage.
- D. Characteristics:
1. Metal: Aluminum
 2. Mounting: PM-1
 3. 24 Inch Letters:
 - a. Letter Style: Architectural Prismatic 514
 - b. Finish: Medium Bronze 312 Duraodic
 - c. Text: Dr. Martin Luther King Community Center (Upper and lower case as shown).
- E. Template: Provide full size paper mounting template showing hole placement and location of mounting holes.

Message Schedule

Not provided.

Installation

3.1 INSTALLATION:

- A. General: locate sign units and accessories where indicated, using mounting methods of the type described and in compliance with the manufacturer's instructions.
 - 1. Install signs level, plumb, and at the height indicated with sign surfaces free from distortion or other defects in appearance.
- B. Cleaning and Protection: After installation, clean soiled sign surfaces according to the manufacturer's instructions. Protect units from damage until acceptance by the owner.

Install Notes

Not provided.

Location Plan

Refer to A-201 Exterior Elevations
A-202 Exterior Elevations