





Masterplan Adventure Park
Scale 1:250



Symbol	Scientific name	Common name
	<i>Fagus grandifolia</i>	Beech
	<i>Picea glauca</i>	Spruce
	<i>Quercus suber</i>	Cork Oak
	<i>Tilia grandifolia</i>	Linden Tree
	<i>Prunus serrulata</i>	Cherry Blossom
	<i>Malus pumila</i>	Paradise apple
	<i>Rubus fruticosus</i>	Blackberry
	<i>Pyrus pyrastrer</i>	Wild Pear

Legend

- 1) Entrance
- 2) Parking
- 3) BZM
- 4) Forecourt tourists
- 5) Waiting area
- 6) Delivery area
- 7) Playhouse
- 8) Sensory walls, spring riders, flags place, epdm surface
- 9) Forest School
- 10) BBQ/campfire area
- 11) Walkway (3meters wide), pebblewash material
- 12) Tree phone
- 13) Labyrinth
- 14) Biotope
- 15) Scent organ
- 16) Wooden sound (trees)
- 17) Touch sensory space
- 18) Seating area
- 19) Forest area
- 20) Habitat improvement
- 21) Forest area
- 22) Lookout point
- 23) Performance area
- 24) Video wall
- 25) Deer feeding stations
- 26) Picnic area
- 27) Pavilion outdoor class
- 28) Forestry house

- 29. BBQ/campfire area
- 30. Soil profile
- 31. Rhizomes
- 32. Insect hotel
- 33. Anthill
- 34. Ants world
- 35. Wild fruit trees
- 36. Nesting box wall
- 37. Stone wall
- 38. Hedges
- 39. Hedges
- 40. Barefoot trail
- 41. Lookout point
- 42. Beetle trail
- 43. Spider web, Dead wood
- 44. Hedges
- 45. Events pavilion
- 46. Snack and stay pavilion
- 47. Ilex rock
- 48. Herbs garden
- 49. Alpine garden
- 50. Tool shed storage

- 51. Free Adventure area (obstacle course)
- A. Stretching area
- B. Start/Finish area (epdm surface)
- C. Stepping stones
- D. Seating area
- E. Balancing beams
- F. Tyre hopping
- G. Crawl space
- H. Wall climb
- I. Wall climb

BBQ/campfire area	Drinking Fountain	Toilets







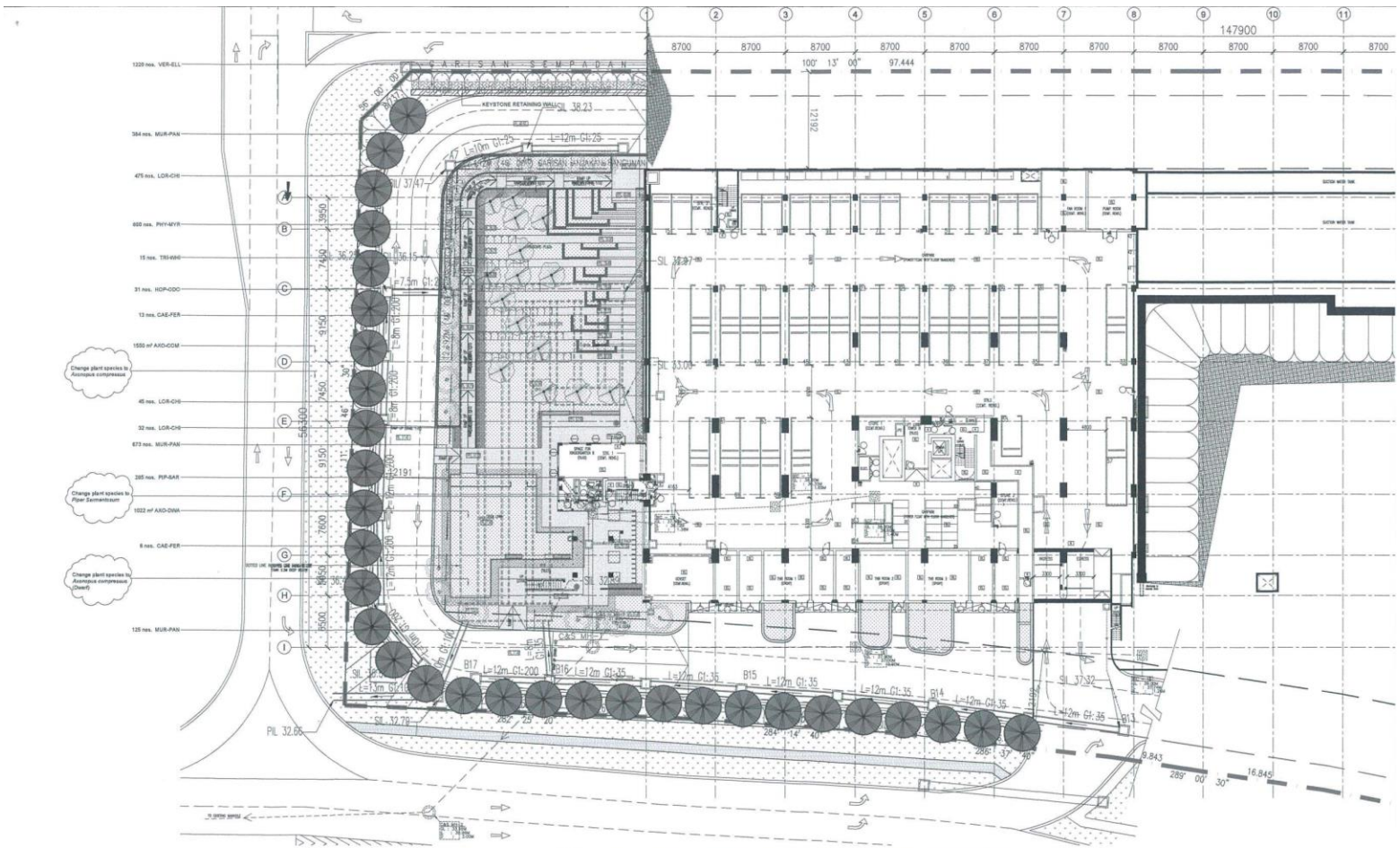


PERSPECTIVE VIEW (PACKAGE A-14)



PERSPECTIVE VIEW (PACKAGE B-13)





JADUAL PENANAMAN TINGKAT LG

DIBESOL	REKS	ESTIMASI UMUR	COMMON NAME	SIZE	PLANTING DISTANCE	QTY	REMARKS
TREES							
101	TRSH6	Tristania whiteana	INDEP TREE	33 x 3 T800	C15-96	15	
102	CALFER	Caesalpinia ferrea	LEOPARD TREE	33 x 3 T800	-	19	
103	HOPD00	Hopsea odorata	MIRAWAN (BUNT) JANTAN	33 x 3 T800	-	31	
SHRUBS							
104	MUR-PAN	Murraya paniculata	KEWANG	6.0 x 3.0	0.36	1102	
105	LOR-CH	Loropetalum chinensis var. rubrum	LOROPETALUM	3.0 x 1.5	0.36	251	
106	PH-GR	Phyllanthus myrsinoides	RED HOT PLANT	3.0 x 1.5	0.36	891	
107	VER-ELL	Vernonia elliptica	CURRY CATERPILLER	6.0 x 1.5	0.36	123	
108	PIP-GR	Piper samentosum	WILD PEPPER	6.0 x 1.5	0.36	251	
TURF							
109	ARO-DWA	Annonop compressus (Dwarf)	PEPAL GRASS	CLOSED TURF	-	1023 M ²	
110	ARO-COM	Annonop compressus	COM GRASS	CLOSED TURF	-	1551 M ²	

NOTA
 A) TOP SOIL 10CM (JERAM) 20CM (SIRIH) 20CM (SEKAM)
 B) MARIKOTAN SUPPLY KE DAERAH TUMBUH
 C) ANGGARAN HEDONALAN BERTUKAR BAWARCA BATA, KERTAS DAN BAHAN BAHAN
 D) GARIBATI 10
 E) TUMBUH TUMBUH - 1 (TOPSOIL) 2 (MARI) 1 (BAKUL) 1 (KORONG)

PERATAK
 T8 - 1000 tinggi
 T2 - 1000 diameter
 C15 - 1000 tinggi
 M2 - meter persegi

1
 PP-01
 SKALA 1: 250
 PELAN PENANAMAN POKOK & POKOK RENEK TINGKAT LG

POKOK



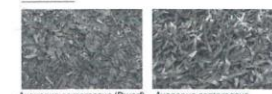
Caesalpinia ferrea Tristania whiteana Hopsea odorata

POKOK RENEK



Vernonia elliptica Loropetalum chinensis var. rubrum Phyllanthus myrsinoides Murraya paniculata Piper samentosum

RUMPUT



Annonop compressus (Dwarf) Annonop compressus

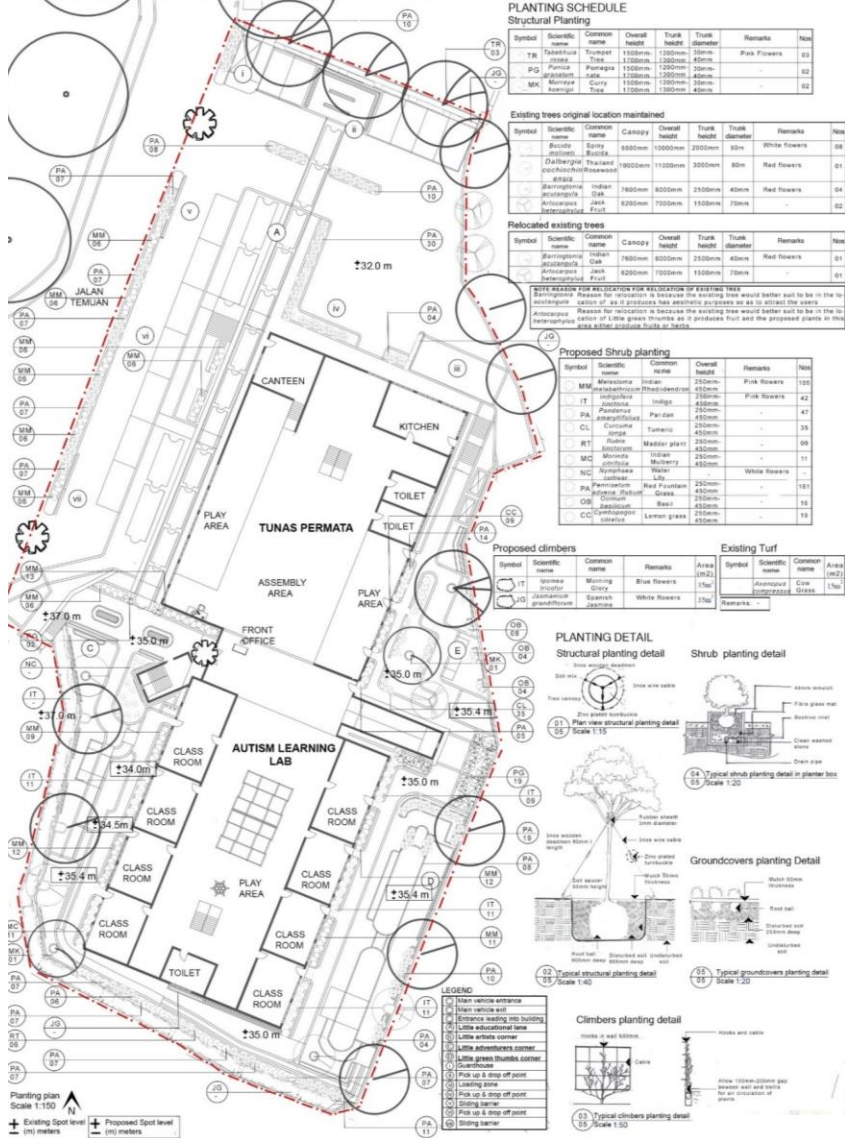
DETAILED AREA PLAN



PERSPECTIVES



PLANTING PLAN, PLANTING SCHEDULE, PLANTING DETAIL



MATERIAL PLAN
Little Artists Corner: Material schedule



IMAGES BOARD: SOFT LANDSCAPE

Existing trees



SN: *Burkea molinellii*
CN: Spiny Burkea
Canopy: 5500mm
Overall height: 10 600mm
Trunk height: 2000mm
Trunk Diameter: 40m
Characteristics: The tree form is round. Its leaves are light green and variegated. Flowers are yellow and insignificant. Its stem is grey in colour and has a spine.
Function: Sculptural
Note: Existing tree



SN: *Barringtonia acutangula*
CN: Indian Oak
Canopy: 7500mm
Overall height: 8 000mm
Trunk height: 2000mm
Trunk Diameter: 40m
Characteristics: The tree form is round. It has a grey bark. Flowers: Scarlet red. Thick, glossy green leaves.
Function: Sculptural
Note: Existing tree



SN: *Dalbergia eocochinchensis*
CN: Spiny Rosewood
Canopy: 8500mm
Overall height: 2000mm
Trunk height: 3000mm
Trunk Diameter: 80m
Characteristics: The tree form is round. Trunk: Bark brownish-grey with white flowers that are fragrant.
Function: Sculptural, shade
Note: Existing tree



SN: *Mussa acuminata*
CN: Dwarf Cavendish Banana
Canopy: 2000
Overall height: 2500mm
Trunk height: 800 mm
Trunk Diameter: 30m
Characteristics: The tree has leaves which are lanceolate in shape and produces fruit.
Function: Sculptural, consumption
Note: Existing tree



SN: *Artocarpus heterophyllus*
CN: Jack Tree
Canopy: 8000
Overall height: 6200mm
Trunk height: 1500 mm
Trunk Diameter: 40m
Characteristics: The tree has leaves which are lanceolate in shape and produces fruit.
Function: Sculptural, consumption
Note: Existing tree

Proposed trees



SN: *Tabehoia rosea*
CN: Trumpet Tree
Canopy: 10 000mm
Overall height: 10 000mm
Trunk height: 4000mm
Trunk Diameter: 80m
Characteristics: The tree has thick foliage with pink, ornamental flowers. The leaves are dark green in colour and are elliptic in shape.
Function: Sculptural, shade



SN: *Murraya koenigii*
CN: Curry Tree
Canopy: 2500
Overall height: 2600mm
Trunk height: 1300 mm
Trunk Diameter: 40m
Characteristics: It has shiny green lance-shaped leaves. The leaves are aromatic especially when rubbed on the hands. It also has white funnel-shaped flowers.
Function: Consumption, consumption
Note: Existing tree



SN: *Pisonia granatum*
CN: Fungus Plant
Canopy: 2000
Overall height: 2600mm
Trunk height: 800 mm
Trunk Diameter: 30m
Characteristics: The tree form is round. Its leaves are light green and it has red fruit.
Function: Sculptural, consumption
Note: Existing tree

Proposed shrubs



SN: *Indigofera tinctoria*
CN: Indigo
Diameter: 1200
Overall height: 1400mm
Characteristics: It has green leaves and has flowers which are pink in colour.
Function: Aesthetic, Natural plant dye, medicinal



SN: *Pandanus amaryllifolius*
CN: Pandan
Diameter: 1200
Overall height: 1400mm
Characteristics: It has green lance-shaped leaves. It develops from a small growth form into shrubs with slender stems.
Function: Consumption, medicinal
Natural plant dye, medicinal



SN: *Crotona longe*
CN: Turmeric
Diameter: 600mm
Overall height: 800mm
Characteristics: It has large green glossy textured leaves which can reach up to 300mm length.
Function: Consumption, Natural plant dye, medicinal
Note: Existing tree



SN: *Melastoma malabaricum*
CN: Indian Rhododendron
Diameter: 1200mm
Overall height: 1400mm
Characteristics: It has lance-shaped leaves which are mid green in colour and has flowers which are pink in colour.
Function: Natural plant dye



SN: *Morinda citrifolia*
CN: Indian Mulberry
Diameter: 1200
Overall height: 1300mm
Characteristics: It has mid green lance-shaped leaves and has fruit which are yellow in colour.
Function: Consumption, medicinal
Natural plant dye



SN: *Rubia tinctorum*
CN: Madia Plant
Diameter: 300
Overall height: 600mm
Characteristics: It has light green leaves which are linear in shape. It also has yellow flowers.
Function: Natural plant dye



SN: *Cymbopogon citratus*
CN: Lemon grass
Diameter: 600mm
Overall height: 800mm
Characteristics: It grows in dense clumps and has seven stiff stems, and slender blade-like leaves which start to droop at the tip.
Function: Consumption, medicinal
Note: Existing tree



SN: *Ocimum basilicum*
CN: Basil
Diameter: 300mm
Overall height: 300mm
Characteristics: It has lance-shaped leaves which are mid green in colour and has flowers which are pink in colour.
Function: Consumption, medicinal
Note: Existing tree



SN: *Pennisetum advena rubrum*
CN: Purple Fountain Grass
Diameter: 300mm
Overall height: 600mm
Characteristics: It has lance-shaped leaves which are mid green in colour and has flowers which are pink in colour.
Function: Consumption, medicinal
Note: Existing tree



SN: *Nymphaea cultivar*
CN: Water Lily
Diameter: 300
Overall height: 800mm
Characteristics: It has ornamental flowers that float above the water. The base of the green leaves which are green in colour and circular in shape. Flowers can be pink or white in colour.



SN: *Jomoea tinctoria*
CN: Morning glory
Characteristics: It has ornamental flowers which are heart-shaped leaves which are blue to violet in colour. The flowers are shaped in a funnel manner.
Function: Consumption

Existing Turf



SN: *Axonopus compressus*
CN: Cree Grass
Characteristics: It is a creeping stem which roots at the nodes. The leaf sheath is fine and along the outer margin it is hairy.
Function: To keep soil stable and to prevent soil erosion

IMAGES BOARD: HARD LANDSCAPE

Proposed Hard Landscape at Pick up/Drop off zone



Security guard house:
Comprises of steel and timber material



Sliding barrier:
Comprises of steel material



Grasscrete:
Comprises of concrete material



Perimeter wall:
Comprises of brick material



Ultrasonic animal repellent:
Comprises of steel and plastic material



Covered walkway:
Comprises of steel material



Pecs daily schedule:
Comprises of plastic material and steel frame



Pecs daily schedule:
Comprises of images put on outdoor trees



Composite wood decking:
Comprises of timber material



Composite planter box:
Comprises of timber material



Informational signpost:
Comprises steel material

Proposed Hard Landscape at Little Artists Corner



Man-made water curtain:
Comprises of steel material



Children's pool:
Comprises of concrete material that will have tiles as finishing



Pecs swimming schedule:
Comprises of plastic material and steel frame



Edm surfacing:
Comprises of rubber material



Shower area:
Comprises of concrete material



Composite wood decking:
Comprises of timber material



Pecs Art schedule:
Comprises of plastic material and steel frame



Gear panel with colours primary and secondary colours:
Comprises of plastic material



Track and trace sensory panel:
Comprises of plastic material



Retaining wall:
Comprises of stone material



Man-made water cascade:
Comprises of stone material



Composite wood planter box combined with bench:
Comprises of timber material
Note: These planterboxes which are combined with benches are situated in all the outdoor spaces

Proposed Hard Landscape at Little Adventurers Corner



Shaded structure:
Comprises of steel material but painted in such a way that it resembles timber



Edm surfacing:
Comprises of rubber material



Pecs showing how to play:
Comprises of plastic material and steel frame



Play equipment:
Comprises of plastic material. These play equipment allow for children to play in pairs or groups which encourages children to be communicative



Dimensional puzzle wall:
Comprises of plastic material
Note: These pieces can be attached to the wall by using as rope so as to prevent puzzle pieces from being misplaced

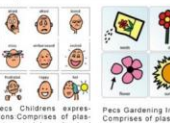


Tactile sensory panel:
Comprises of plastic material which will have various textures

Proposed Hard Landscape at Little Geen Thumbs



Perfolia:
Comprises of timber material



Pecs Children's expressive board:
Comprises of plastic material and steel frame



Pecs Gardening Instructions:
Comprises of plastic material and steel frame



Pecs fruits and vegetables:
Comprises of plastic material and steel frame



Composite wood planter box:
Comprises of timber material



Storage shed and nursery:
Comprises of composite wood material



Outdoor washing station:
Comprises of plastic material