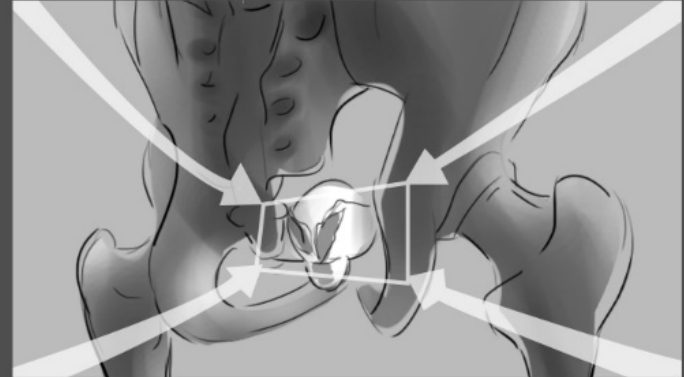


Start with model in full size

Zoom towards pelvis



Zoom in to the 3D model

Show skeletal structure of the pelvis

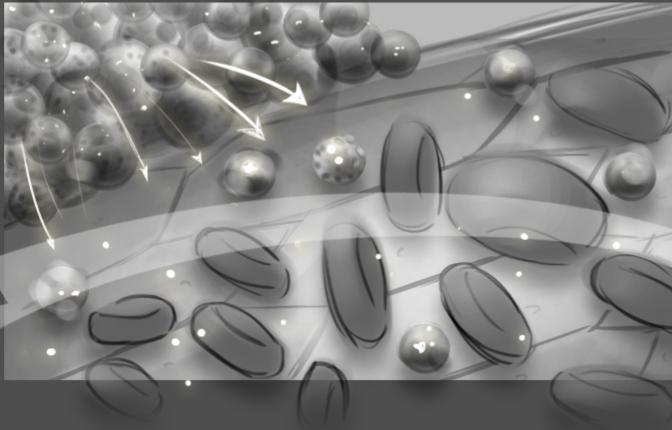
Zoom to show the prostate



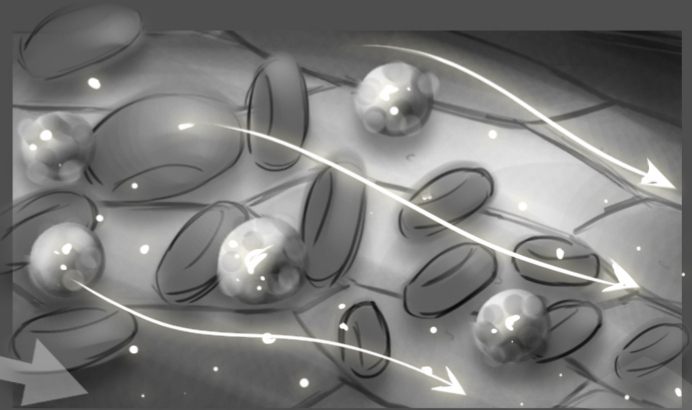
Zoom to show gross structure of the prostate



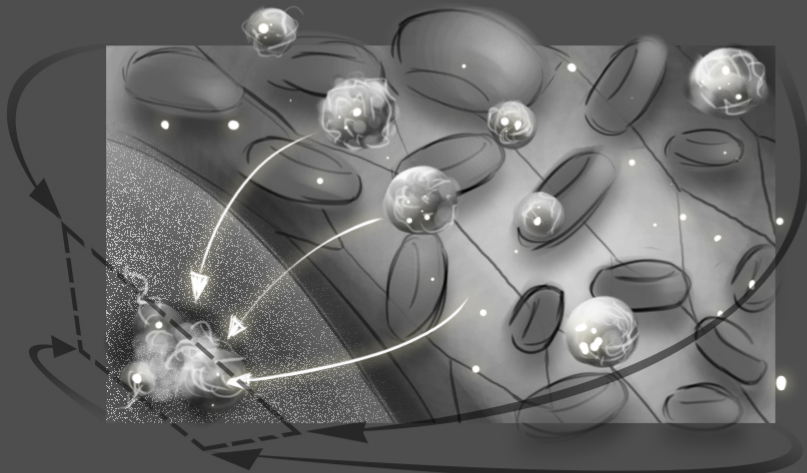
Zoom in further to show areas depicting prostate cancer
Show macro-cellular components



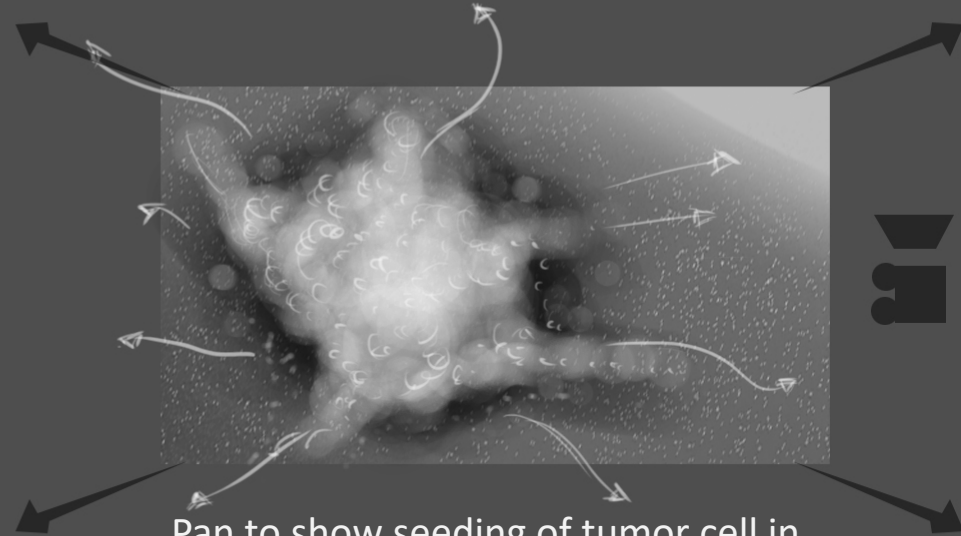
Zoom in further and show tumor cells infiltrate in to an adjacent artery



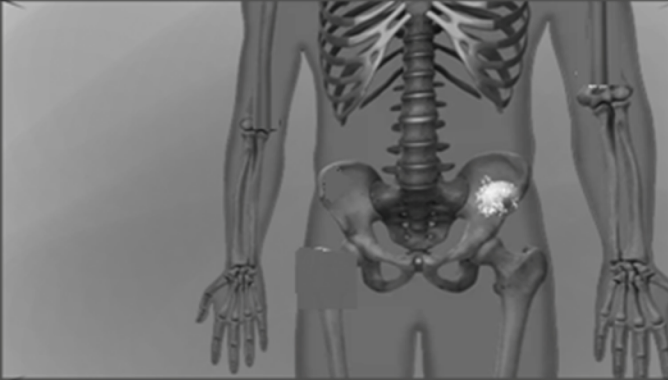
Pan to show the tumor cells travel in the blood stream



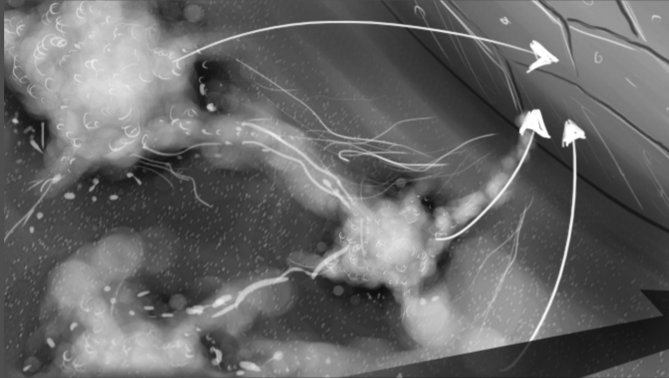
Pan along the edge of the blood vessel and show exfiltration of the tumor cells out of the vessel and in to tissue showing structure of the bone



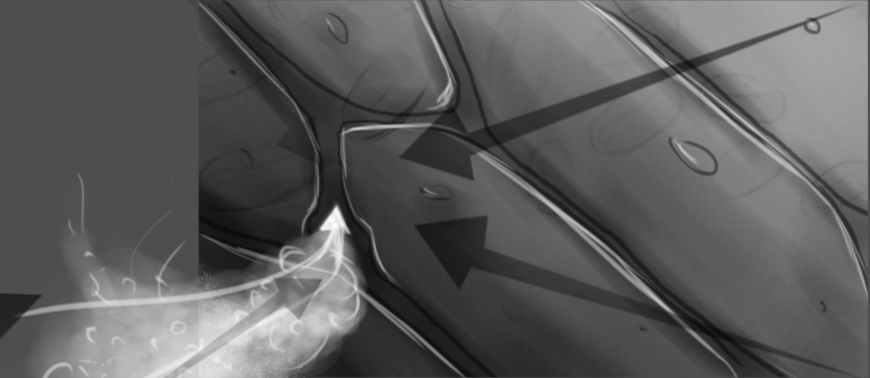
Pan to show seeding of tumor cell in to area of bone which is depicted to secrete chemoattractants



Zoom out to show the tumor in the
hip

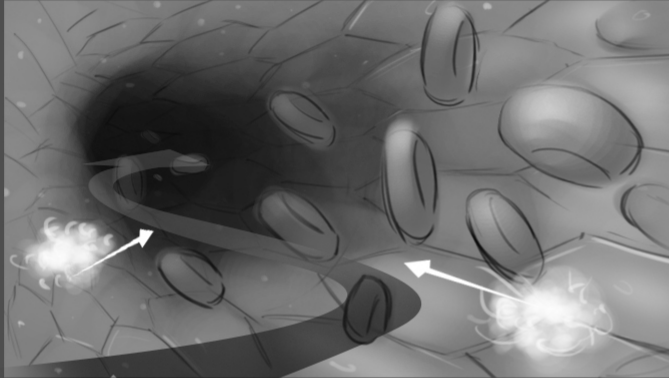


Zoom in to show the microscopic structure of the tumor in the hip and pan to show tumor cells enter a vessel

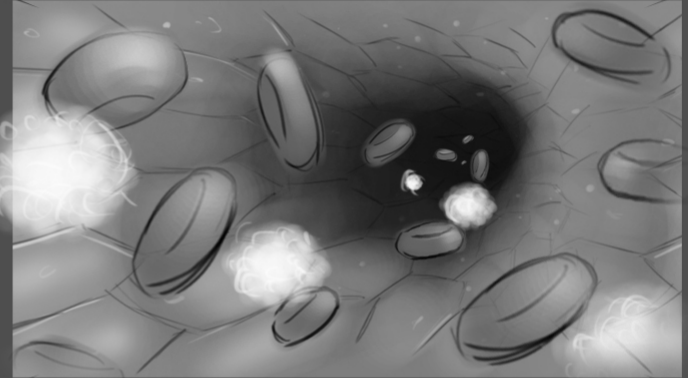


Zoom in to the vessel

Please make this animation very brief

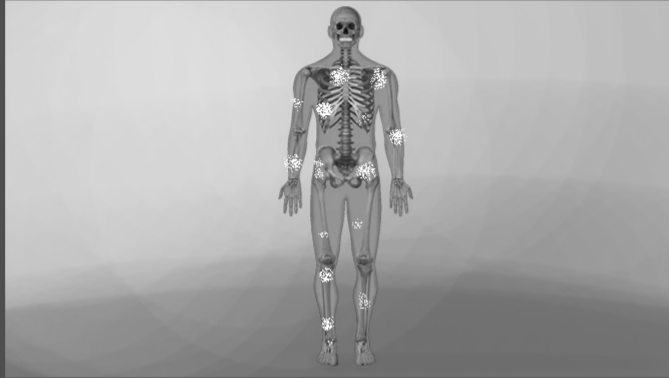


Depict the tumor cells inside the vessel



Zoom out to show the macroscopic structure of the man

Please make this animation very brief



Zoom out to show the entire 3D
model

Show tumor cells from the hip
seeding other areas

Please highlight cells from one bone in the skeleton moving to other bones